

MUSTANG CHALLENGE NORTH AMERICA

TEAM MANAGER BRIEFING: WATKINS GLEN



SERIES CONTACTS



Chris Ward Global Customer Racing Manager (248) 252-8524
Dave Born Motorsports Program Supervisor (313) 805-8868

Chelsey Vickery	Race Director	(812) 431-7716
Duane Sampson	Director, Single Make	(386) 285-7021
Austin Farr	Coordinator, Single Make	(386) 293-1702
Cory Posocco	Logistics & Event Ops	(386) 566-8313
Holly Langer	Paddock Set-Up	(386) 871-0241
Paul Walter	Sporting	(614) 598-6783
Steven Sewell	Technical	(860) 671-1401
Johnny Knotts	Pit Lane Supervisor	(813) 763-4669
Carol Mueller	Manager, Member Services	(386) 262-8932
David Pees	Timing & Scoring	(386) 308-8866
Ryan McLean	Medical Liaison	(386) 285-6913
Roy Spielmann	Track Services	(414) 702-0905
Robert Bosworth	Safety & Security	(704) 728-8087

IMSA RESOURCES

IMSA COMPETITOR LANDING PAGE:

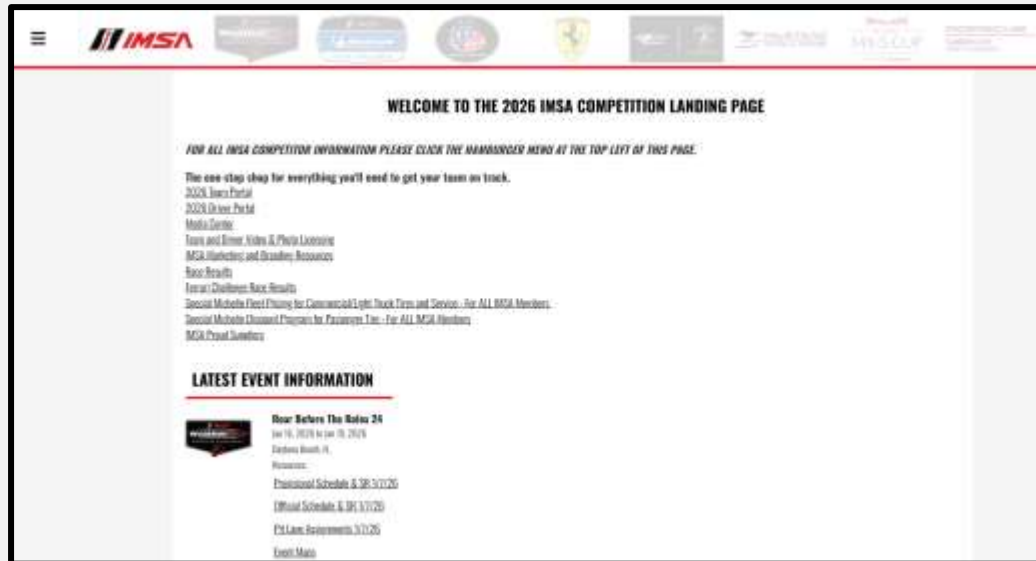
<https://www.imsa.com/competitors/>

- Team Portal
- Event Information
- Rules & Regulations
- Marketing & Branding Page
- All Event Schedules published

IMSA NOTICE BOARD:

<http://results.imsa.com/>

- Driver & TM Briefings
- Entry Lists
- Minute by Minute
- Timing Results
- Penalties



TO IMSA REGISTRATION

Directions

1. Take County Route 16 (Montour-Townsend Rd) to Bronson Hill Rd (Gate 4A)
2. Take first left to enter IMSA Registration Parking located in Lot 3. IMSA Registration is across Bronson Hill Rd in WGI Registration Building (see inset photo)

Notes

- Refer to Official Schedule / SR for Registration hours of operation
- Address: 1999 Bronson Hill Rd, Watkins Glen, NY 14891



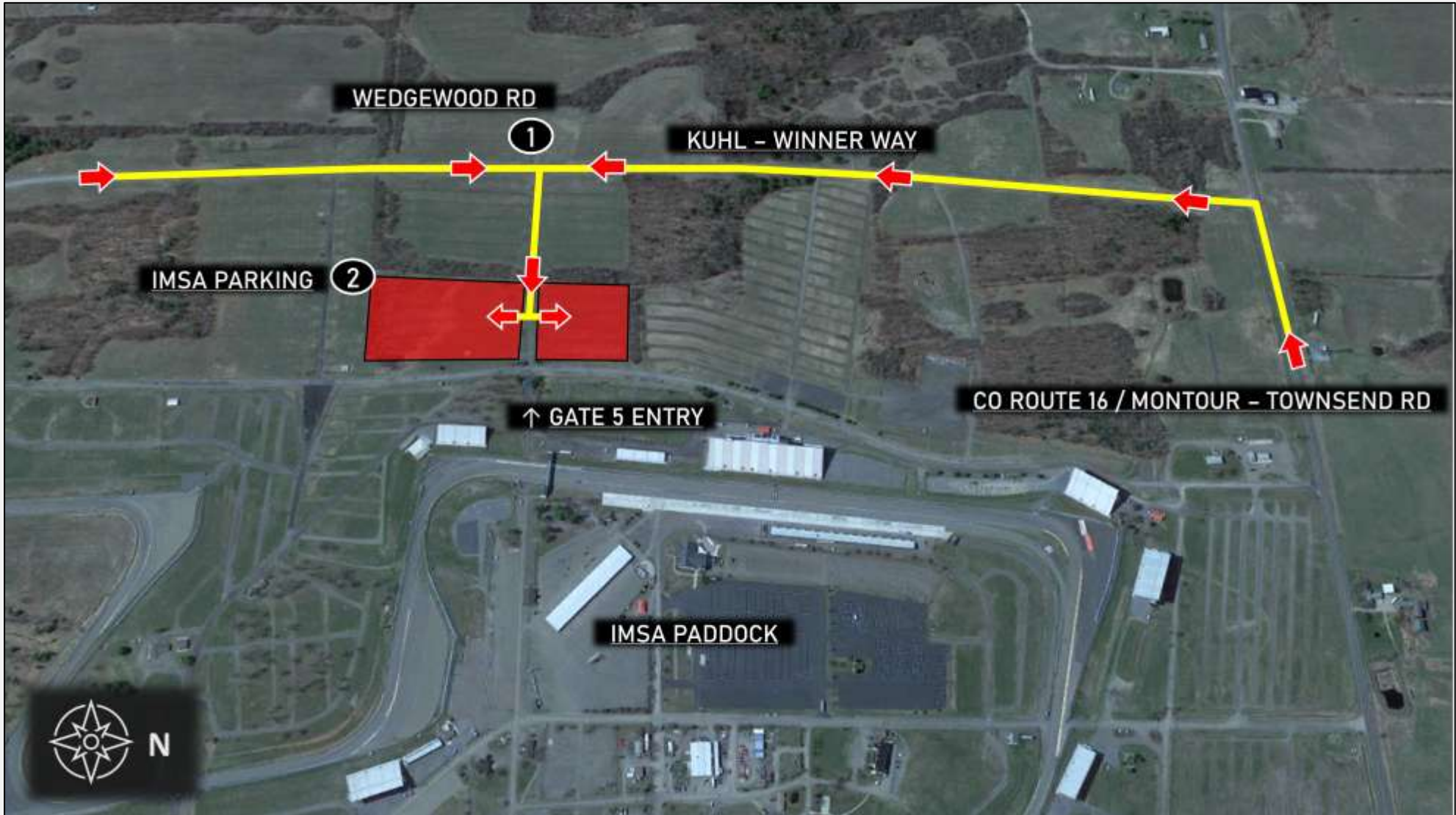
TO IMSA GATE 5 PARKING

Directions

1. Take Kuhl-Winner Way to Wedgewood Rd
2. Proceed to designated IMSA Gate 5 Parking area (red shaded areas)

Notes

- IMSA annual hangtag required for entry
- Use Gate 5 and Walkover Bridge to access IMSA paddock areas
- Gate 5 entry will be closed daily from 12:00 AM – 5:30 AM. Contact WGI Security for after-hours access



TO IMSA LOWER INFIELD PARKING

Directions

1. Take County Route 16 (Montour-Townsend Rd) to Watkins Glen Gate 2
2. Proceed through tunnel and take first left
3. Proceed to designated IMSA Lower Infield Parking area (pink shaded area)

Notes

- Proper track-issued parking pass (see inset photo) valid and required for entry on Thu., 6/25 – Sun., 6/28
- IMSA Annual Hangtags are not valid for lot



PADDOCK/GOLF CART PASSES - **IMSA**

Annual Paddock and Pit Lane Golf Cart / Tugger passes for 2026.

- **MCNA** Teams are allotted **one (1)** annual Paddock pass per entered Car.
- **MCNA** Teams are allotted **one (1)** annual Pit & Paddock pass for tugger pit lane access per entered Car.
- **A Team must return a previously issued Annual pass to obtain a replacement.**
 - Available in the Single Make Tech Trailer.
- IMSA ADA Golf Cart passes - permits access during restricted Track Walks.
 - Available from IMSA Registration as appropriate with proof of ADA.
- Improper use and/or falsification of any credential, parking pass and/or access pass is prohibited. Penalty: minimum \$5,000 fine and suspension or revocation of Membership and/or any other penalty available per Art. 57.

PADDOCK/GOLF CART PASSES - RACETRACK

- Motorized support vehicles operated outside of the garage, pit and Paddock areas and the D/O Lot must have a single-event or annual permit issued by NASCAR
 - For an annual NASCAR permit, contact golfcarts@nascar.com or 386-681-3850.
 - For a single event NASCAR permit. Contact Jessica Cramer, jcramer@theglen.com or 607-535-3311.



PADDOCK

**PROHIBITED
ANY ONE, TWO OR
THREE-WHEEL FORM OF
TRANSPORTATION**

**ONLY PROPERLY
PERMITTED VEHICLES ACCEPTED
EXCEPTIONS FOR VESTED MEDIA
AND ADA TRANSPORT**

Motorcycles, drones, bicycles, skateboards, rollerblades and other non-motorized transportation, as well as motor scooters of one, two or three-wheels and/or designed to transport one or two persons, are prohibited in the garage, pit and/or Paddock areas except authorized power-driven mobility devices (ADA requirements - Americans with Disabilities Act), and accredited and vested media personnel.

Pit vehicles must only be operated by an IMSA credential holder. Motorized carts and similar 3- or 4-wheeled conveyances must not be driven into pit lane except pit equipment approved for a Series or as specified in the SR.

Such use in the Paddock must be for legitimate purposes only.

Excessive speed and/or unsafe operation is prohibited. Participants must abide by state laws and Promoter restrictions regarding licensing, maximum speed, helmet requirement and use.

Such conveyances may be prohibited at certain Events or in certain areas of each facility by local ordinance or Promoter limitation.

IMSA SEVERE WEATHER PLAN

- IMSA uses the DTN Weather Service with Lightning Detection.
- Notifications are sent (as in past years):
 - Within 30 miles of the track – Advisory message sent for informational purposes.
 - Within 20 miles of the track – Cautionary message sent to increase awareness and trigger protective actions for personnel and equipment.
 - Within 8 miles of the track – Full-Stop message sent for personnel to stop all activities and seek shelter due to potentially dangerous conditions.
 - IMSA continues to send periodic updates through the messaging service while on-track activities are under a “full-stop”.
 - When severe weather has moved out of the area, an “all-clear” message is transmitted.

IMSA uses an internal messaging service. Text messages are sent to all credentialed attendees for an Event. There is no need to provide a recipient list.

ACCESSING EMERGENCY SERVICES

EMS/MEDICAL

- For emergency assistance (24 hours per day), dial 911. The call is captured by Schuyler County 911 Center and directed to WGI 911 Communications for dispatch.
- For non-emergency assistance during hours of operation, go to Infield Care Center. If Infield Care Center is closed, call 911.

LAW ENFORCEMENT AND FIRE DEPARTMENT

- For a fire assistance (24 hours per day), dial 911. The call is captured by Schuyler County 911 Center and directed to WGI 911 Communications for dispatch.

PADDOCK OPERATIONS

- **20.3.2.** Driving of and/or riding on any vehicles (including Cars, golf carts, and pit vehicles) in the Paddock or facility deemed dangerous, erratic, of inappropriately excessive speed for the circumstances or established limits and/or in violation of the RULES is prohibited and subject to penalty.
 - A. Cars must only be driven/operated by an IMSA credentialed Driver or Crew Member. Passengers and/or unsecured exterior materials prohibited.

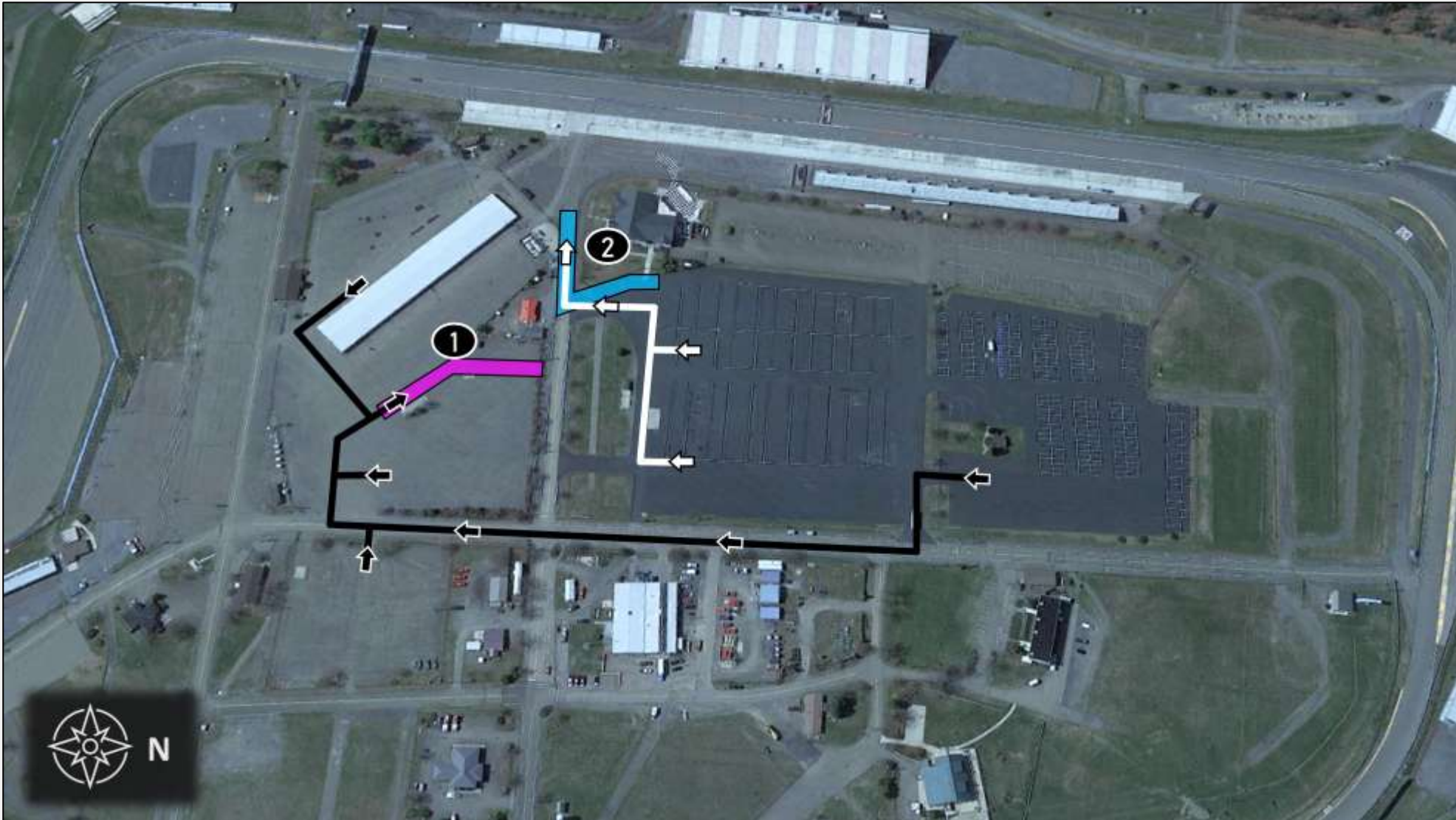




FALSE GRID LOCATIONS

Locations

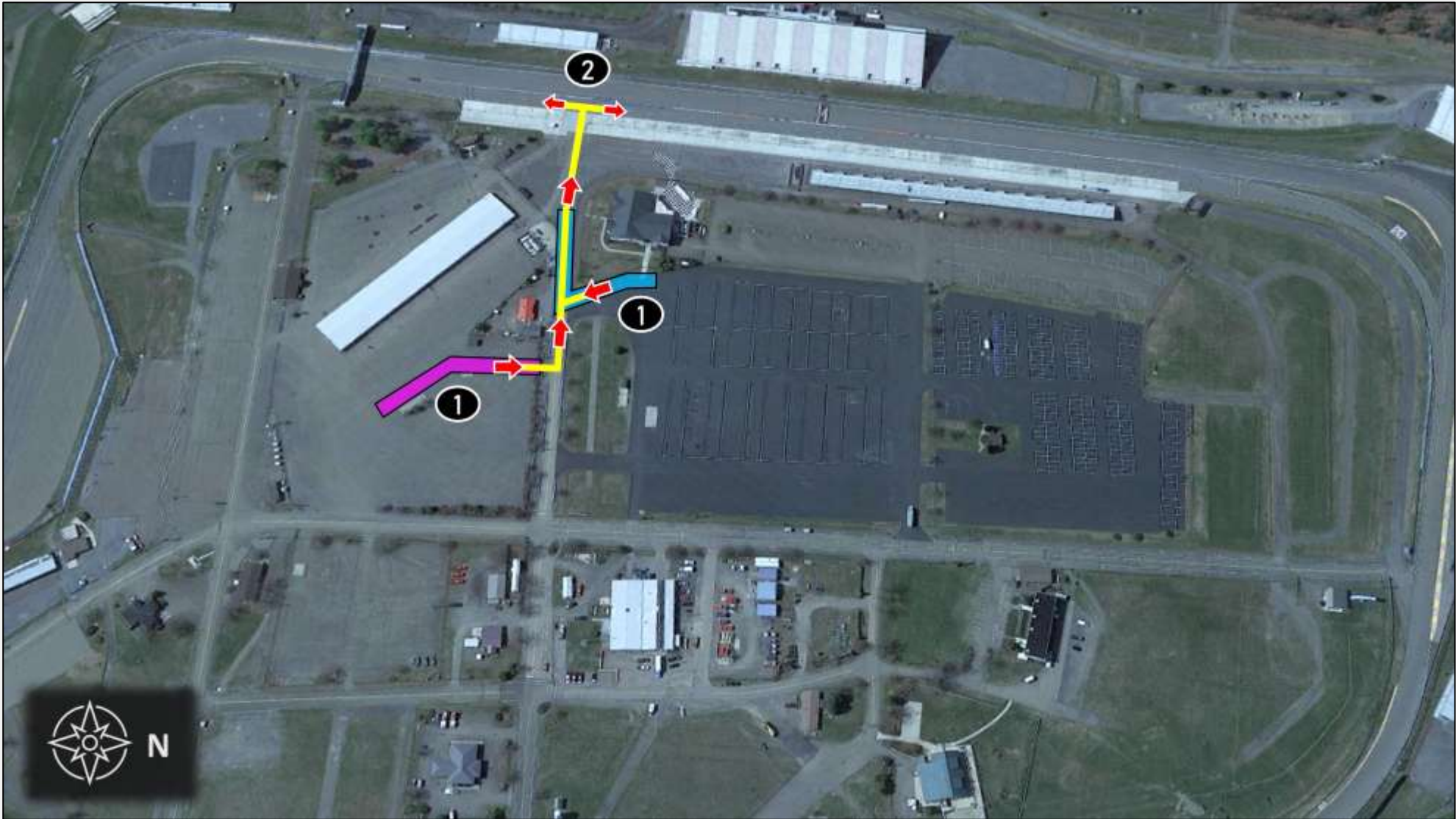
- 1. False Grid for Single-Make (PCCNA, LSTNA, MCNA) and IMSA Michelin Pilot Challenge
- 2. False Grid for IMSA WeatherTech SportsCar Championship



TO PIT LANE

Directions

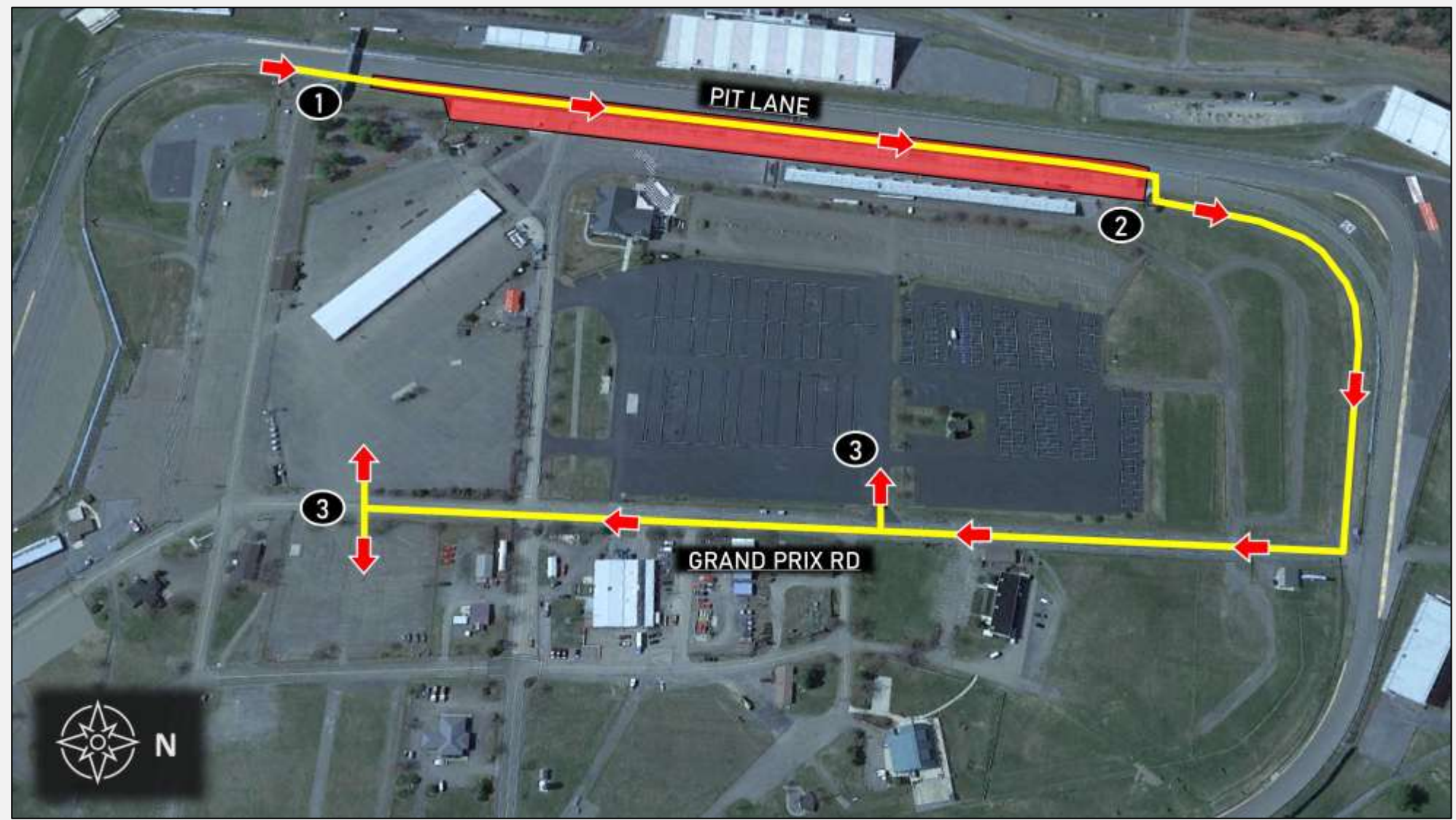
1. Exit respective False Grid and proceed on Pit Lane Access Road
2. Enter Pit Lane and proceed to assigned Pit Box. Traffic may proceed on either direction on Pit Lane



TO PADDOCK

Directions

1. Exit track onto Pit Lane and proceed down Pit Lane
2. Proceed to Paddock Access Road, continuing to Grand Prix Rd
3. Enter Series Paddock



PIT IN

Be clear with Car placement exiting T10.
Stay Driver's RT.

Maintain Speed through T11, be aware
of Cars behind.



PIT LANE SPEED LIMIT

Pit Lane speed limit begins at Red pylons.



PIT LANE PROTOCOL



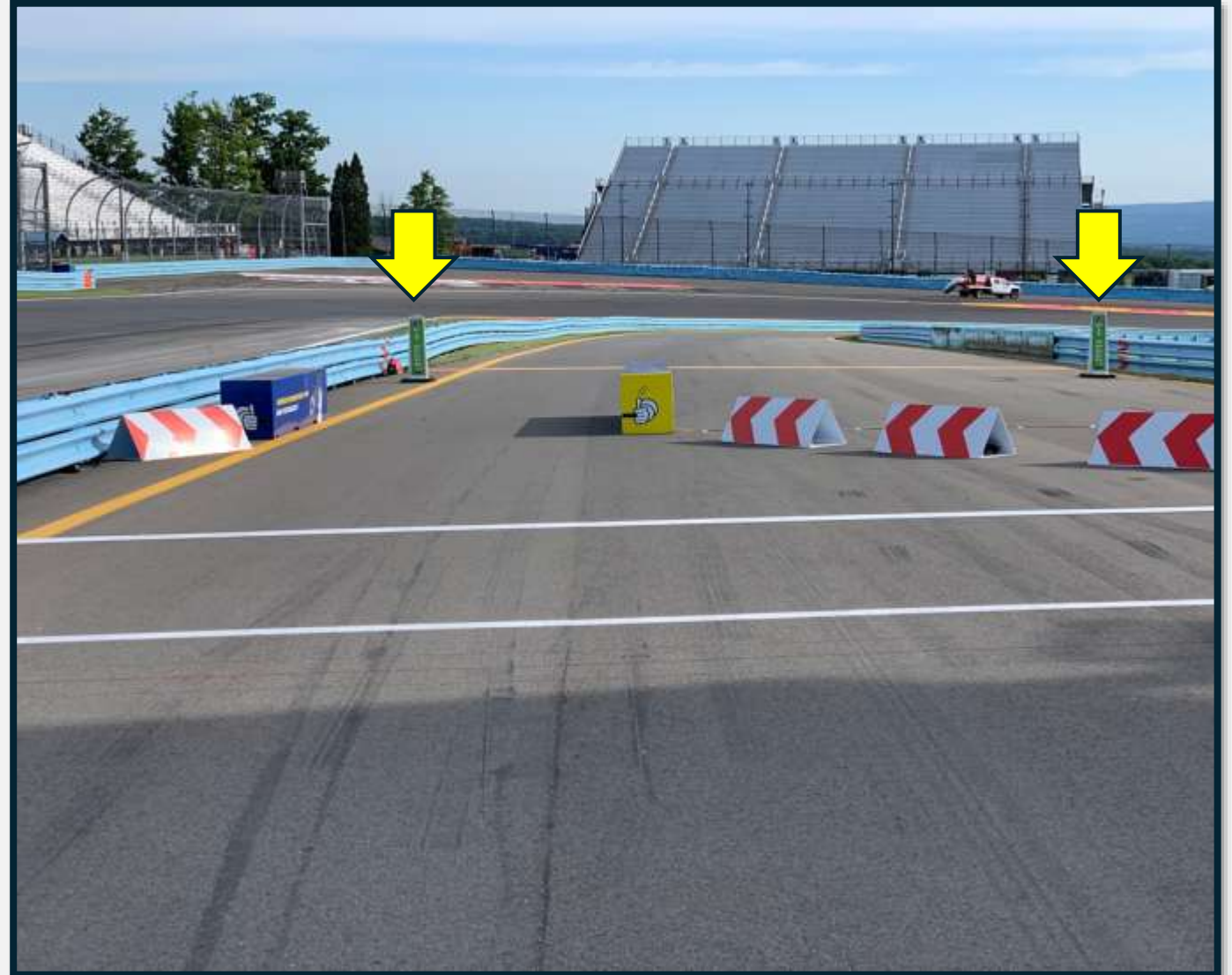
PENALTY BOX

Located Driver's right at Pit Exit.



PIT EXIT / PIT LANE SPEED ENDS

Pit Lane speed limit ends at Green pylons.



PIT EXIT MERGE

Cars exiting the Pit Lane must remain two wheels to the right of the Yellow merge line until it ends.

Be aware of the speed difference of on-track Cars, merge safely.



TRACK LIMITS TURN 1

A Car with all four tires outside (to the left) of painted curb has exceeded track limits.

Cars exceeding track limits must merge/rejoin safely.



SHORT CUT TURN 5 (BUS-STOP)

Rejoin safely at the exit.

Cars on-track have right of way.



TRACK LIMITS TURN 8

A Car with all four tires outside (to the left) of painted curb has exceeded track limits.

Cars exceeding track limits must merge/rejoin safely.



TRACK LIMITS TURN 10

A Car with all four tires outside (to the right) of painted curb has exceeded track limits.

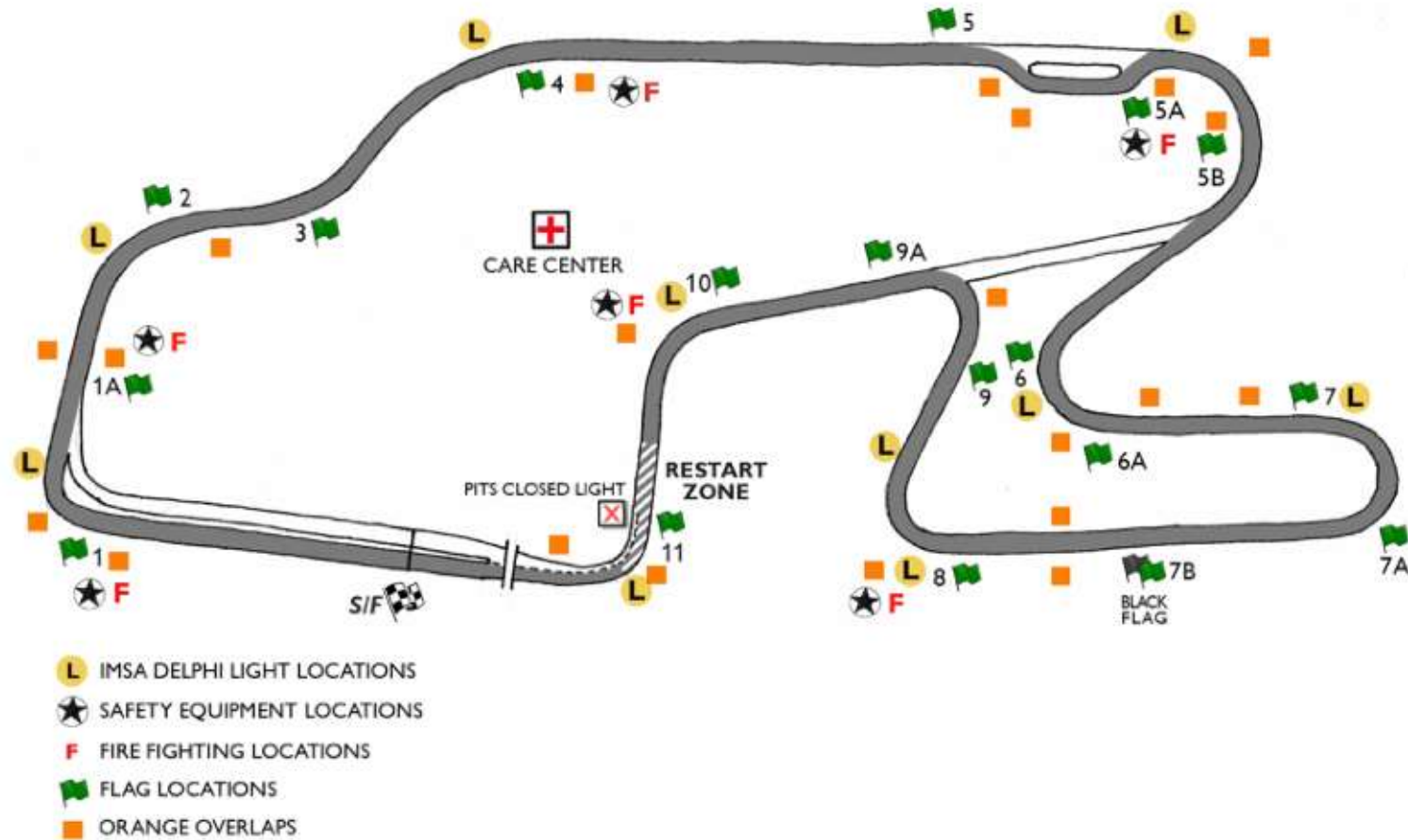
Cars exceeding track limits must merge/rejoin safely.



OFFICIAL TRACK MAP



2026 SAHLEN'S SIX HOURS OF THE GLEN



IMSA TRACK SERVICES

IMSA CHASE VEHICLES

- Chase 1 | Porsche Cayenne GTS
- Chase 2 | Porsche Cayenne GTS
- Chase 3 | Ford F-150
- Chase 4 | Ford F-150

ON-TRACK ASSISTANCE

- Communication with Track Services Medic
- Neutral and power shut off
- Follow direction of on-scene Track Services personnel
- Maintain a safe speed and distance when passing on-track incidents with Track Services team members present

Contact: Roy Spielmann 414.702.0905



IMSA AMR Porsche Rapid Response Vehicles PORSCHE CAYENNE GTS



IMSA AMR Ford Raptor Recovery Trucks

FORD F-150 RAPTOR

CARE CENTER LOCATION

Notes

- Care Center is located East of IMSA Paddock (red shaded area)
- Refer to Official Schedule / SR for Care Center hours of operation



POST-QUALIFYING TECHNICAL INSPECTION

50.1. (SSR) When the Checkered Flag is displayed, all Cars, as directed by the IMSA Officials, must proceed to Impound directly, with a Team representative if so directed, and under the supervision of the IMSA Officials. **A Car not driven directly and immediately to Impound is subject to penalty.**

- Particularly following Qualifying, Drivers must deliver any Cars selected for Impound directly to the Technical Inspection area without delay. Failure to comply may result in penalty. As Technical Inspection resources will be concentrated on processing efficiency, Paddock guidance to the technical inspection area will be limited. Competitors are responsible for knowing and fulfilling their Impound obligations under the regulations.

ORANGE OVERLAPS



ORANGE OVERLAPS



WATKINS GLEN TIRE USAGE REQUIREMENTS

[Link to Michelin Bulletin](#)

30/65-18 MICHELIN PILOT SPORT CUP H2

FRONT & REAR

MICHELIN Pilot Sport Cup^{GT} H2

Usage	Le Mans, Watkins Glen, Charlotte
Max load (static + dynamic)	600 daN
Max speed	320 km/h / 186 mph
Nominal rim width	12 (-1/+0.5) J 18
Minimum cold pressure	1.8 bar / 26.1 psi
Maximum stint length	190 km / 118 mi

Number of stints	Minimum hot pressure (bar / psi)					
	2.2 / 31.9	2.3 / 33.4	2.4 / 34.8	2.5 / 36.3	2.6 / 37.7	2.7 / 39.2
Camber						
-3.11°	0	0	0	0	0	0
-2.81° to -3.1°	0	0	0	0	0	0
-2.51° to -2.8°	0	0	0	1	1	1
From -1.0° to -2.5°	0	0	0	1	1	1

P2L WET - Front & Rear

MICHELIN Pilot Sport GT P2L

Usage	Le Mans, Watkins Glen, Charlotte
Max load (static + dynamic)	600 daN
Max speed	320km/h / 198 mph
Nominal rim width	12(-1/+0.5) J 18
Minimum cold pressure	1.8 bar / 26.1 psi
Maximum stint length	190 km / 118 mi

Number of stints	Minimum hot pressure (bar / psi)					
	2.2 / 31.9	2.3 / 33.4	2.4 / 34.8	2.5 / 36.3	2.6 / 37.7	2.7 / 39.2
Camber						
-3.11°	0	0	0	0	0	0
-2.81° to -3.1°	0	0	0	0	0	0
-2.51° to -2.8°	0	0	0	1	1	1
From -1.0° to -2.5°	0	0	0	1	1	1

AUTOGRAPH SESSION

- Friday, June 26 - 11:15 am – 11:45 am
- Located at Mustang Challenge Series Transporter

COTA HOSPITALITY OPPORTUNITY

COTA VIP HOSPITALITY

**Saturday, September 5th -
Sunday, September 6th 2026**

Experience premium hospitality at the FIA World Endurance Championship at Circuit of the Americas. With unrivalled views over the pit lane, gourmet cuisine, open bar service and lounge access with VIP comfort throughout the weekend.

Your Package Includes:

- **Exclusive Hot Lap with the Ford Racing team**
- Hospitality within the Le Mans Spirit Club on qualifying and race day
- Circuit and paddock access from practice through to race day
- Pit Walk and Grid Walk admission
- Behind-the-scenes garage tour with the Ford Racing team
- Live driver Q&A sessions
- Access to the Hot Spot trackside viewing area with shuttle service during the race
- VIP parking (1 pass per 3 guests)
- Exclusive gift bag
- Premium catering and open bar service

Package Price: \$2,000 per person.

To make a booking or enquire further, please contact Max at maitken7@ford.com



PROMOTIONAL FAN ENGAGEMENT OPPORTUNITIES

Watkins Glen International

Thursday, June 25 | IMSA Preview Party at Seneca Lodge



TO LEARN MORE CONTACT

Emily Nash | enash@imsa.com , Hailey Harbrecht | hharbrecht@imsa.com

MUSTANG DARK HORSE APP

OFFICIAL APP FOR FORD ONE-MAKE RACING

- Download the app on Apple or Android app store, search under "Dark Horse R"
 - Once downloaded, follow the in-app instructions to be granted access
 - After registering, a pin will be sent to your registered email for verification
- Once granted access, you can alternate through championships using the Settings Gear ⚙ after clicking on your profile picture on the bottom right of the app
- Also available on the web: <https://mustangdarkhorse.app/>
- The app is used to keep competitors up to date with schedule changes, at-track announcements, and other important updates from the FPRS and IMSA Management Teams
- App requires a WiFi/Internet connection



THANK YOU

DRIVER BRIEFING THURSDAY 2PM



MUSTANG CHALLENGE NORTH AMERICA

DRIVER BRIEFING: WATKINS GLEN



PRE-RACE MXM

RACE

One (1) FORMATION lap

Stay with Safety Car until Safety Car enters pits

Pack up after T8

Pair up after T9 (No more tire scrubbing)

Acceleration Point (Polesitter)

Jump/False start Reviews

- Gaps
- Timed/Early Acceleration
- Out of Line
- Lane Change – Changing lanes (left - right) is prohibited until across the S/F line
- Column Passing – Passing Cars in your column is prohibited until across the S/F line

Official Race start is FIRST time by

IMPROPER START



START EXPECTATION



FULL COURSE YELLOW

Race Control radio, in-car lights, double yellow flags displayed

Leader to Safety Car speed, all Cars pack up - respect the area of incident/Track Services personnel

- RC instructions regarding track condition over radio
- SC dispatched from Baker Gate (between T1 and T2)

Response vehicles may begin to move as soon as FCY is announced

RESTART

- Maintain SC speed, let SC get away, *no more tire scrubbing after T9*

RESTART ACCELERATION ZONE - Entry of T11

- Passing on display of green flag

Failure to maintain proper Safety Car speed and correct gaps between Cars, or otherwise initiate manipulative action to gap Cars, is prohibited and subject to penalty.

RESTART ACCELERATION ZONE

Restart acceleration zone is the entry to Turn 11.

Passing is permitted when the Green Flag is displayed.



ON-TRACK CONDUCT

LOCAL YELLOW FLAGS (SEE ARTICLE 27)

No passing from point perpendicular to yellow flag to the point perpendicular to the following green flag

BLOCKING (SEE ARTICLE 30) - MID-OHIO

Movement in reaction to the trailing Car

Altering line based on the actions of pursuing Competitors, warning or penalty.

Defending increases responsibility

CONTACT/INCIDENT RESPONSIBILITY (SEE ARTICLE 30)

Review with Driver Advisor in RC

Incidents under review announced by Race Control

COEXISTENCE

Passing- Responsibility of both overtaking Driver and the Driver being overtaken to assure safe overtaking.

Side by Side- Responsibility of both Drivers to permit racing room.

Restarts, slower Cars, be heads up.

COMMUNICATE REVIEW REQUESTS TO PIT OFFICIALS

Provide as much information as possible.

Time of day, location, and description of action to be reviewed

MID-OHIO / WGI SPECIFICS

MID OHIO

- Improvement from Laguna
- Late inside defensive maneuvers (continued)
- Late braking
- Blocking

WATKINS GLEN SPECIFICS

- T1- Race Start
- Track limits T1, T8, T10 (Races: Warning, Final Warning, 10 Second Post Race, Drive-Through)
- Turn 5 Bus Stop - Cars on track have right away, rejoin safely.
- Multi-class racing / Close-quarters racing
- Low Armco forgiveness.

THANK YOU

