

# PORSCHE CARRERA CUP NORTH AMERICA

## TEAM MANAGER BRIEFING: WATKINS GLEN



# SERIES CONTACTS



Christoph Von Liel	One Make Manager	(424) 482-6197
Ryan Anselmo	Series Manager	(424) 339-9432
Mario Brown	Technical Support	(470) 952-9509
Kyle Thibaudeau	Technical Support	(470) 952-9521
Michael Yanase	Parts Support	(678) 938 1310
Jeremy Sundt	Series Operations Support	(470) 419-9489
Justin Cornelison	Mar/Comms Specialist	(404) 716-2961

Casey Carden	Race Director	(770) 519-7190
Duane Sampson	Director, Single Make	(386) 285-7021
Austin Farr	Coordinator, Single Make	(386) 293-1702
Cory Posocco	Logistics & Event Ops	(386) 566-8313
Holly Langer	Paddock Set-Up	(386) 871-0241
Todd Godek	Technical	(303) 349-4501
Johnny Knotts	Pit Lane Supervisor	(813) 763-4669
Gayle Burnham	Administration	(386) 235-7800
David Pees	Timing & Scoring	(386) 308-8866
Ryan McLean	Medical Liaison	(386) 285-6913
Roy Spielmann	Track Services	(414) 702-0905
Robert Bosworth	Safety & Security	(704) 728-8087

[2026 IMSA Operational Contact List](#)

# IMSA RESOURCES

IMSA COMPETITOR LANDING PAGE:

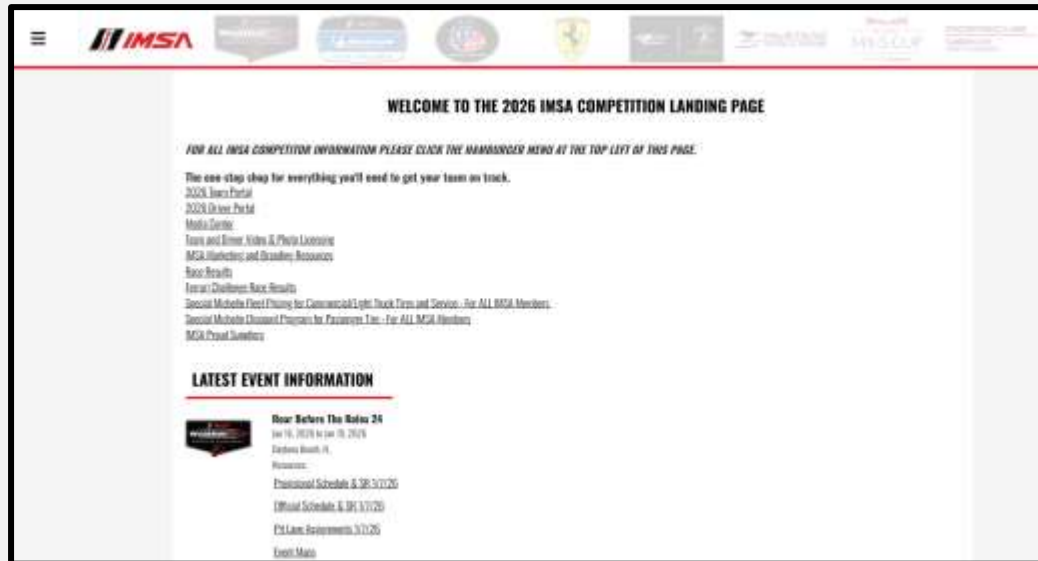
<https://www.imsa.com/competitors/>

- Team Portal
- Event Information
- Rules & Regulations
- Marketing & Branding Page
- All Event Schedules published

IMSA NOTICE BOARD:

<http://results.imsa.com/>

- Driver & TM Briefings
- Entry Lists
- Minute by Minute
- Timing Results
- Penalties



# PCCNA EVENT INFORMATION

The screenshot shows the IMSA website's navigation menu on the left, including links for HOME, EVENT INFORMATION, TEST EVENT INFORMATION, RULES & REGULATIONS, MARKETING & BRANDING, IMSA, and PROUD SUPPLIERS. The main content area features a list of events: IMSA WEATHERTECH SPORTSCAR CHAMPIONSHIP, IMSA MICHELIN PILOT CHALLENGE, IMSA VP RACING SPORTSCAR CHALLENGE, FERRARI CHALLENGE, LAMBORGHINI SUPER TROFEO, MUSTANG CHALLENGE, MAZDA MX-5 CUP, and PORSCHE CARRERA CUP. The Porsche Carrera Cup section is highlighted with a red underline and includes links for General Information, Front Tire Data Booklet, and Rear Tire Data Booklet. A large red arrow points from this section to the right-hand side of the slide.

## 2026 COMPETITOR RESOURCES

- [2026 PCCNA Electronics Ordering](#)
- [2026 PCCNA Sticker Regulations Guidelines](#)
- [2026 Series Overview](#)

## 2026 PIRELLI TIRE RESOURCES

- [Pirelli Tire General Information](#)
- [Pirelli Tire Order Form](#)
- [Pirelli Tire Technical Booklet](#)
- [Pirelli Front Tire Data Booklet](#)
- [Pirelli Rear Tire Data Booklet](#)

## 2026 EVENTS



### Watkins Glen International

Jun 25 to Jun 27

Watkins Glen, NY

Download:

[Provisional Schedule & SR 5/20/26](#)

[Post Event Stayover Release Form](#)

# TO IMSA REGISTRATION

## Directions

1. Take County Route 16 (Montour-Townsend Rd) to Bronson Hill Rd (Gate 4A)
2. Take first left to enter IMSA Registration Parking located in Lot 3. IMSA Registration is across Bronson Hill Rd in WGI Registration Building (see inset photo)

## Notes

- Refer to Official Schedule / SR for Registration hours of operation
- Address: 1999 Bronson Hill Rd, Watkins Glen, NY 14891



# EVENT INFORMATION

## PARKING

- Through Saturday, June 27, IMSA annual parking passes **are only permitted at Gate 5 and are not valid for parking inside the facility.**
- Only on Sunday, June 28, IMSA annual parking passes **are permitted** for parking inside the Paddock based on availability.

## INFIELD PARKING PASSES

- One (1) each per entered PCCNA Car.
- Only credentialed personnel with proper parking passes are permitted to enter Gate 2 and park in the designated competitor parking areas.
- Infield parking in track-designated lots may be available for purchase from the WGI main ticket office or at Gate 2.

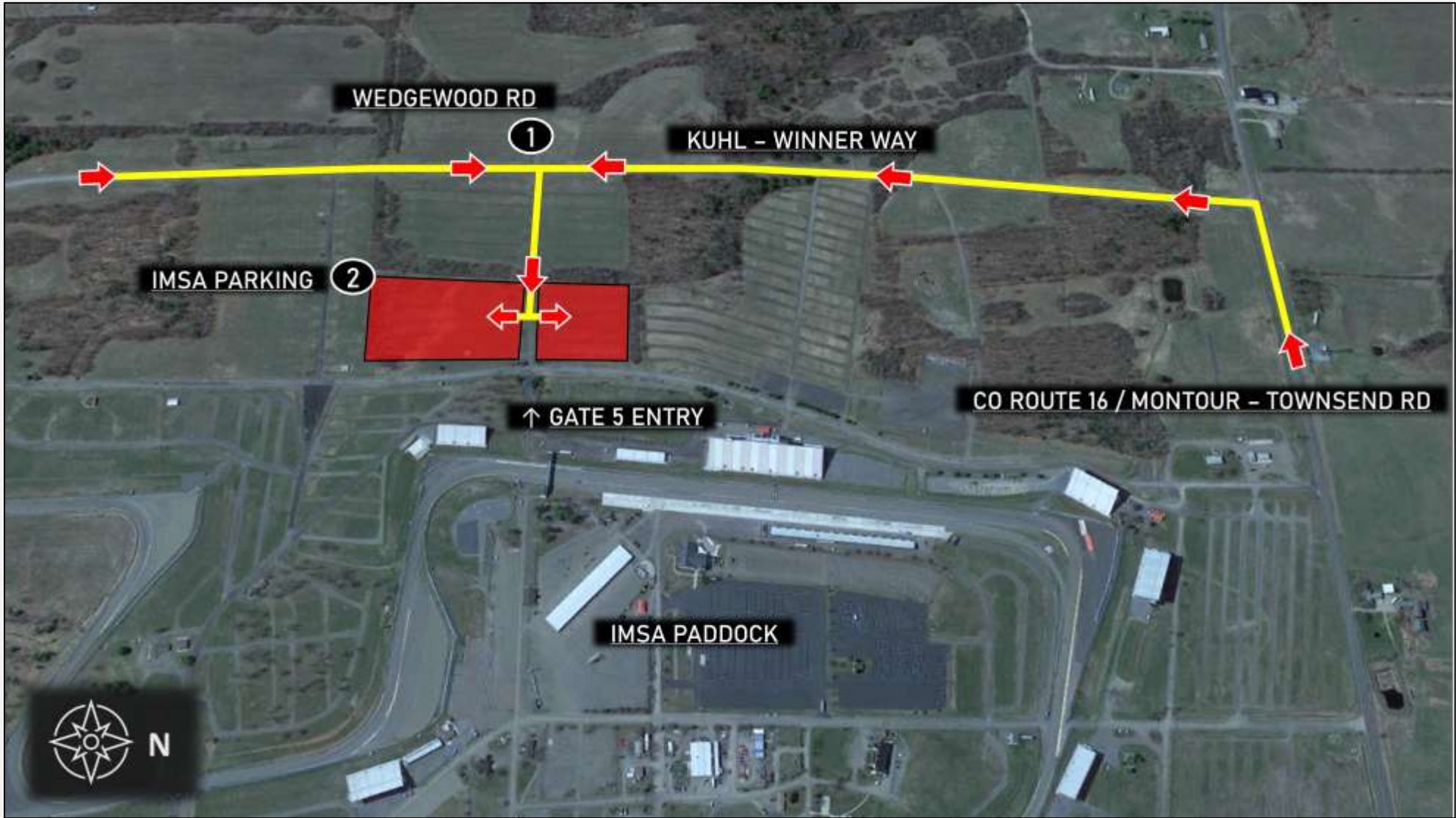
# TO IMSA GATE 5 PARKING

## Directions

1. Take Kuhl-Winner Way to Wedgewood Rd
2. Proceed to designated IMSA Gate 5 Parking area (red shaded areas)

## Notes

- IMSA annual hangtag required for entry
- Use Gate 5 and Walkover Bridge to access IMSA paddock areas
- Gate 5 entry will be closed daily from 12:00 AM – 5:30 AM. Contact WGI Security for after-hours access



# TO IMSA INFIELD PARKING

## Directions

1. Take County Route 16 (Montour-Townsend Rd) to Watkins Glen Gate 2
2. Proceed through tunnel and take first left
3. Proceed to designated IMSA Infield Parking area (blue shaded area)

## Notes

- Proper track-issued parking pass (see inset photo) valid for entry on Thu., 6/25 – Sun., 6/28
- IMSA Annual Hangtags may be used for infield parking on Sun., 6/28 only



# TO IMSA LOWER INFIELD PARKING

## Directions

1. Take County Route 16 (Montour-Townsend Rd) to Watkins Glen Gate 2
2. Proceed through tunnel and take first left
3. Proceed to designated IMSA Lower Infield Parking area (pink shaded area)

## Notes

- Proper track-issued parking pass (see inset photo) valid and required for entry on Thu., 6/25 – Sun., 6/28
- IMSA Annual Hangtags are not valid for lot



# PADDOCK/GOLF CART PASSES - IMSA

Annual Paddock and Pit Lane Golf Cart / Tugger passes for 2026.

- **PCCNA** Teams are allotted **one (1)** annual Paddock pass per entered Car.
- **PCCNA** Teams are allotted **one (1)** annual Pit & Paddock pass for tugger pit lane access per entered Car.
- **A Team must return a previously issued Annual pass to obtain a replacement.**
  - Available in the Single Make Tech Trailer.
- IMSA ADA Golf Cart passes - permits access during restricted Track Walks.
  - Available from IMSA Registration as appropriate with proof of ADA.
- Improper use and/or falsification of any credential, parking pass and/or access pass is prohibited. Penalty: minimum \$5,000 fine and suspension or revocation of Membership and/or any other penalty available per Art. 57.

# PADDOCK/GOLF CART PASSES - RACETRACK

- Motorized support vehicles operated outside of the garage, pit and Paddock areas and the D/O Lot must have a single-event or annual permit issued by NASCAR.
  - For an annual NASCAR permit, contact [golfcarts@nascar.com](mailto:golfcarts@nascar.com) or 386-681-3850.
  - For a single event NASCAR permit. Contact Jessica Cramer, [jcramer@theglen.com](mailto:jcramer@theglen.com) or 607-535-3311.



# PADDOCK

**PROHIBITED  
ANY ONE, TWO OR  
THREE-WHEEL FORM OF  
TRANSPORTATION**

**ONLY PROPERLY  
PERMITTED VEHICLES ACCEPTED  
EXCEPTIONS FOR VESTED MEDIA  
AND ADA TRANSPORT**

Motorcycles, drones, bicycles, skateboards, rollerblades and other non-motorized transportation, as well as motor scooters of one, two or three-wheels and/or designed to transport one or two persons, are prohibited in the garage, pit and/or Paddock areas except authorized power-driven mobility devices (ADA requirements - Americans with Disabilities Act), and accredited and vested media personnel.

Pit vehicles must only be operated by an IMSA credential holder. Motorized carts and similar 3- or 4-wheeled conveyances must not be driven into pit lane except pit equipment approved for a Series or as specified in the SR.

Such use in the Paddock must be for legitimate purposes only.

Excessive speed and/or unsafe operation is prohibited. Participants must abide by state laws and Promoter restrictions regarding licensing, maximum speed, helmet requirement and use.

Such conveyances may be prohibited at certain Events or in certain areas of each facility by local ordinance or Promoter limitation.

# PADDOCK OPERATIONS

- **20.3.2.** Driving of and/or riding on any vehicles (including Cars, golf carts, and pit vehicles) in the Paddock or facility deemed dangerous, erratic, of inappropriately excessive speed for the circumstances or established limits and/or in violation of the RULES is prohibited and subject to penalty.
  - A. Cars must only be driven/operated by an IMSA credentialed Driver or Crew Member. **Passengers and/or unsecured exterior materials prohibited.**



# PIT LANE

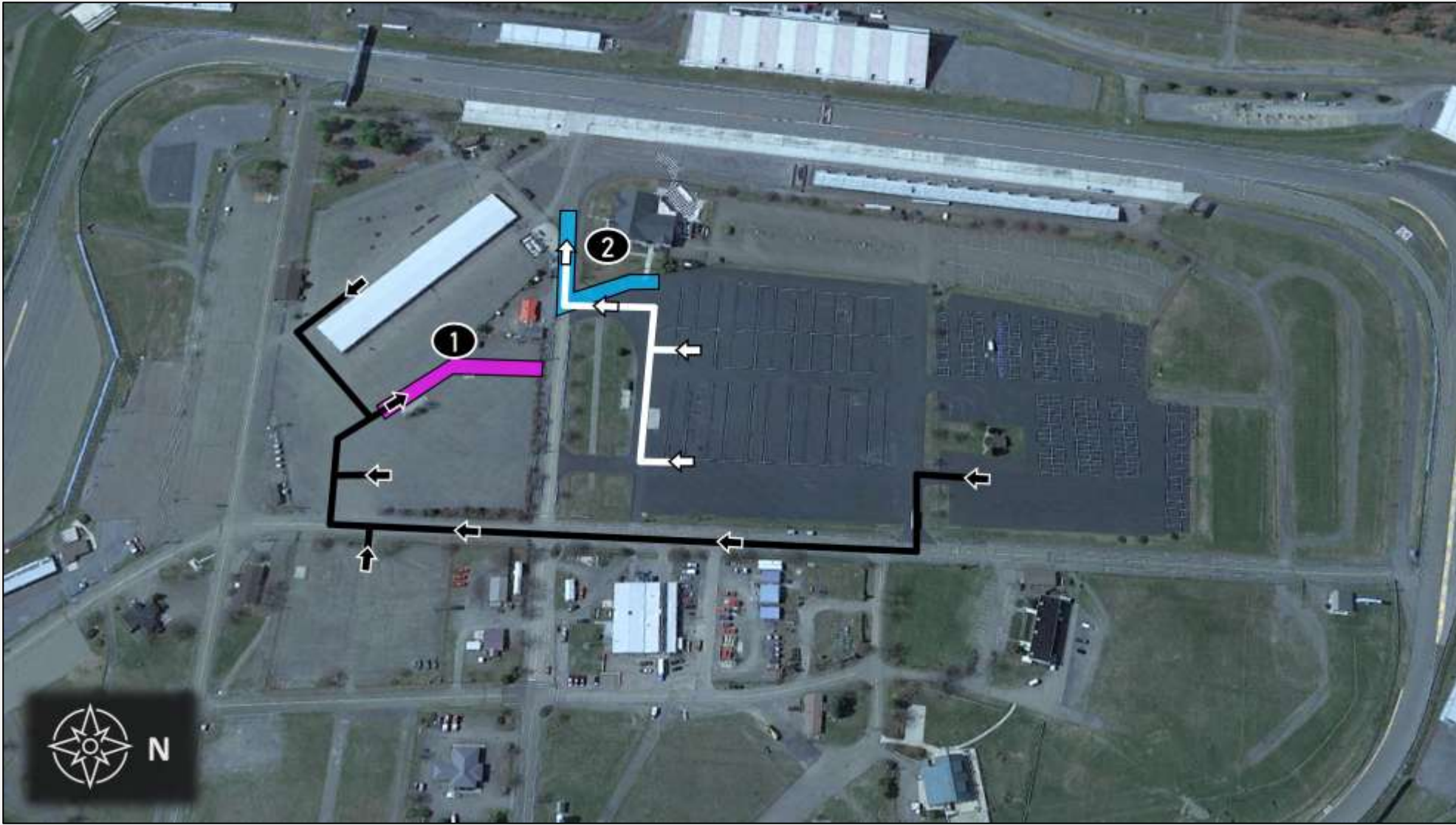
**Pit Lane Assignments** – are posted and can be found at [Competitors | IMSA](#).

- All pit boxes are 21 feet.

# FALSE GRID LOCATIONS

## Locations

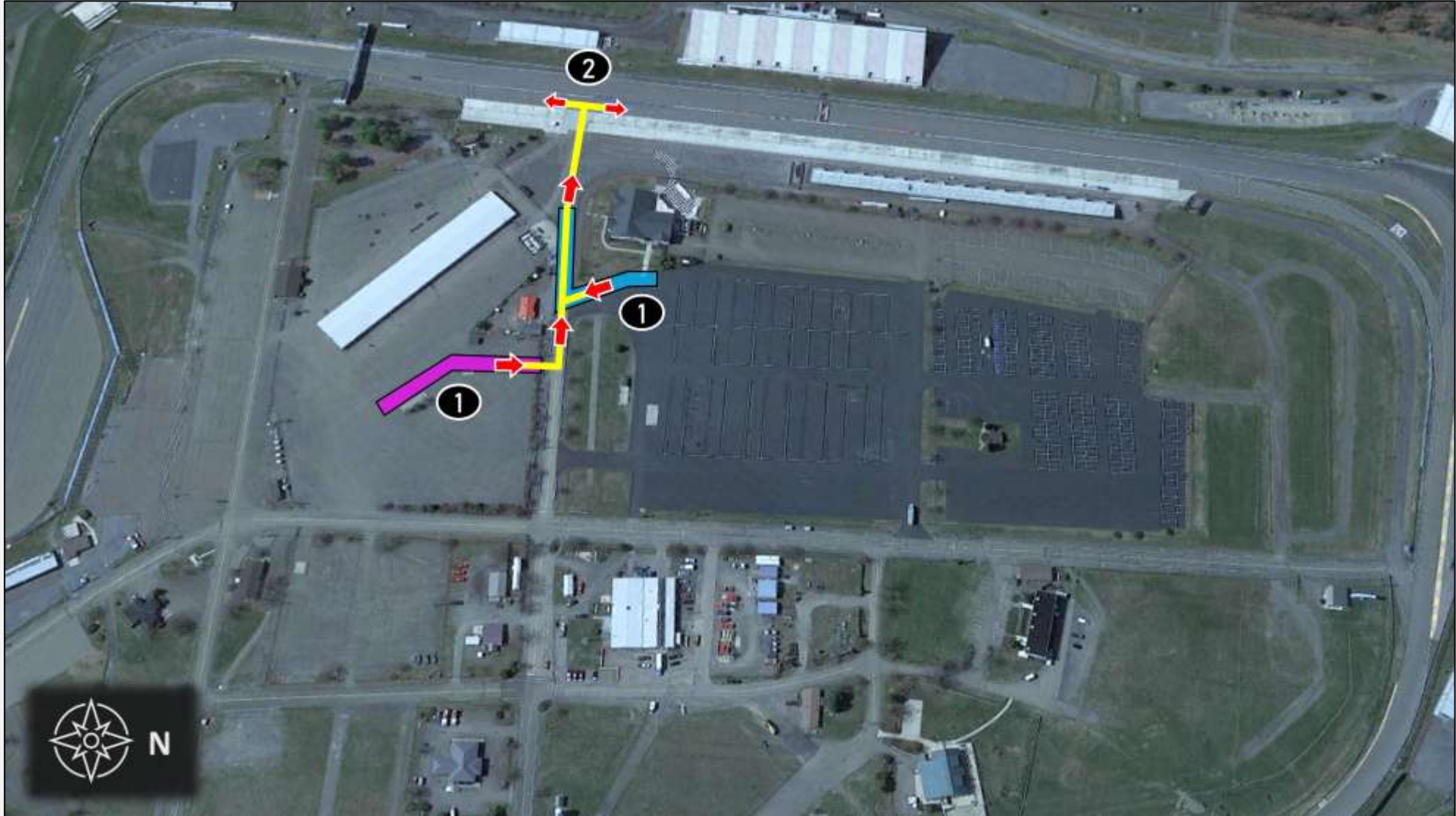
1. False Grid for Single-Make (PCCNA, LSTNA, MCNA) and IMSA Michelin Pilot Challenge
2. False Grid for IMSA WeatherTech SportsCar Championship



# TO PIT LANE

## Directions

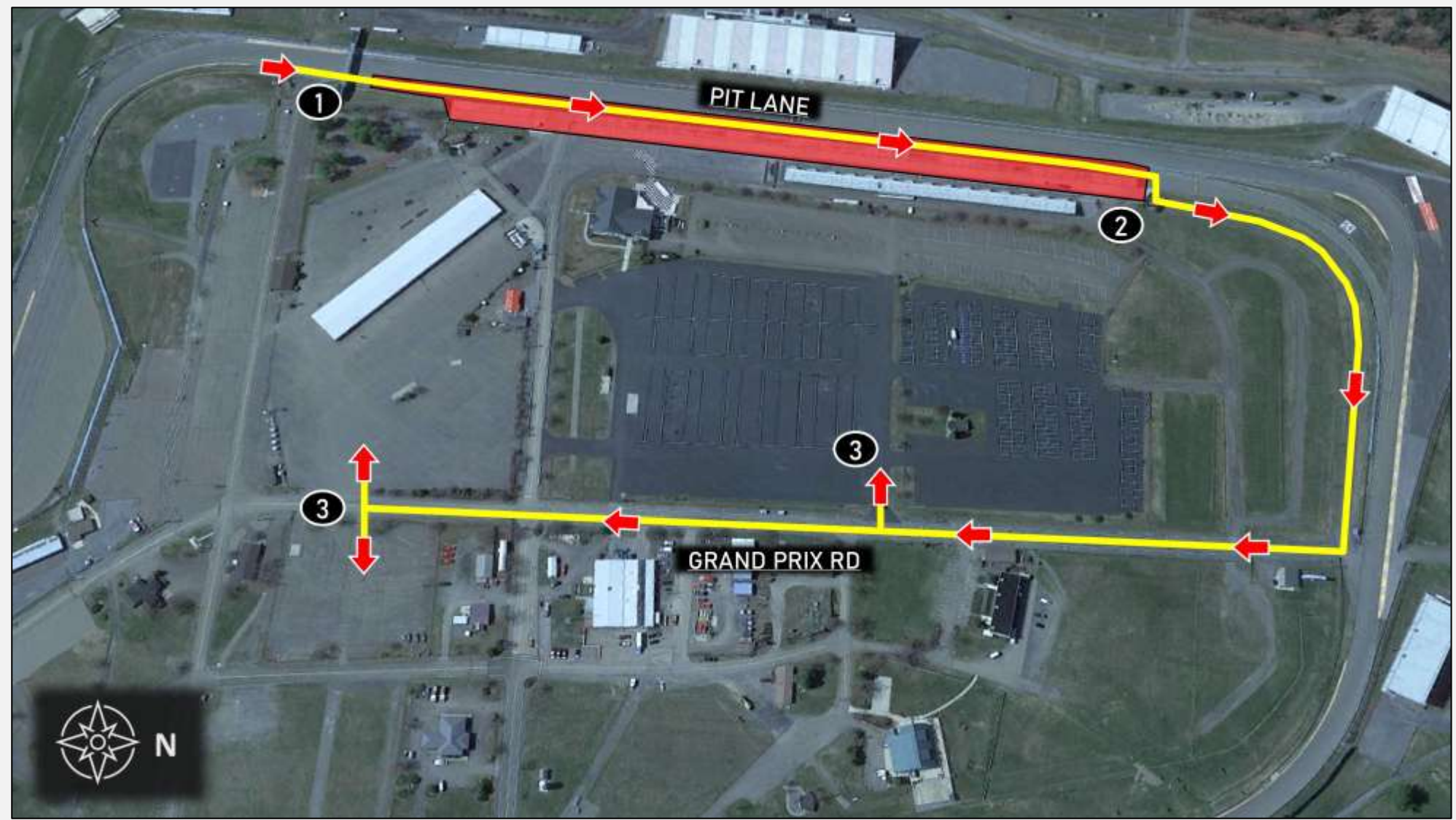
1. Exit respective False Grid and proceed on Pit Lane Access Road
2. Enter Pit Lane and proceed to assigned Pit Box. Traffic may proceed on either direction on Pit Lane



# TO PADDOCK

## Directions

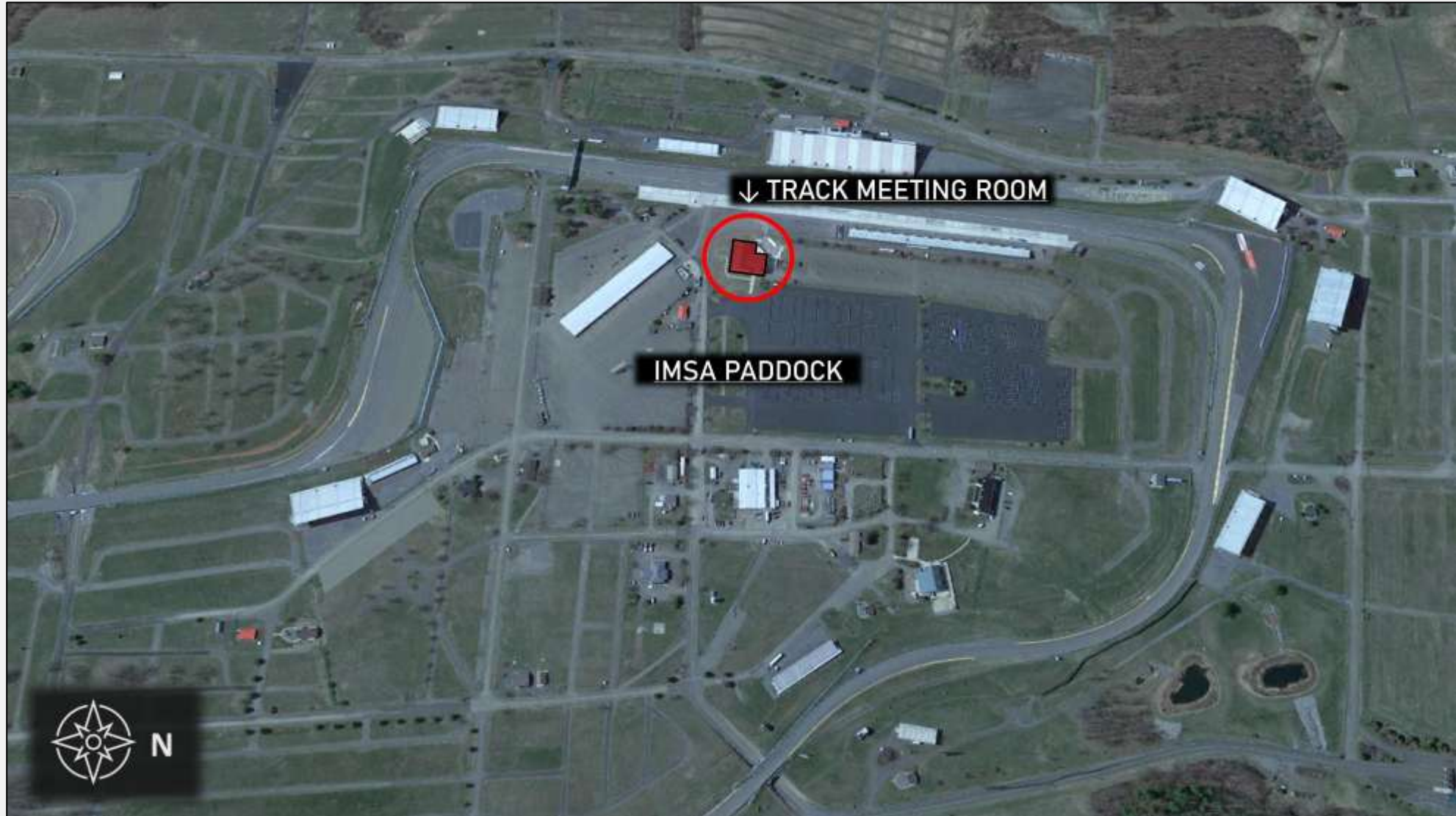
1. Exit track onto Pit Lane and proceed down Pit Lane
2. Proceed to Paddock Access Road, continuing to Grand Prix Rd
3. Enter Series Paddock



# TRACK MEETING ROOM LOCATION

## Notes

- Track Meeting Room is located in Watkins Glen Media Center, top floor
- Proper credentials required for paddock entry
- Refer to Official Schedule / SR for Series-Specific Briefing details





# CARE CENTER LOCATION

### Notes

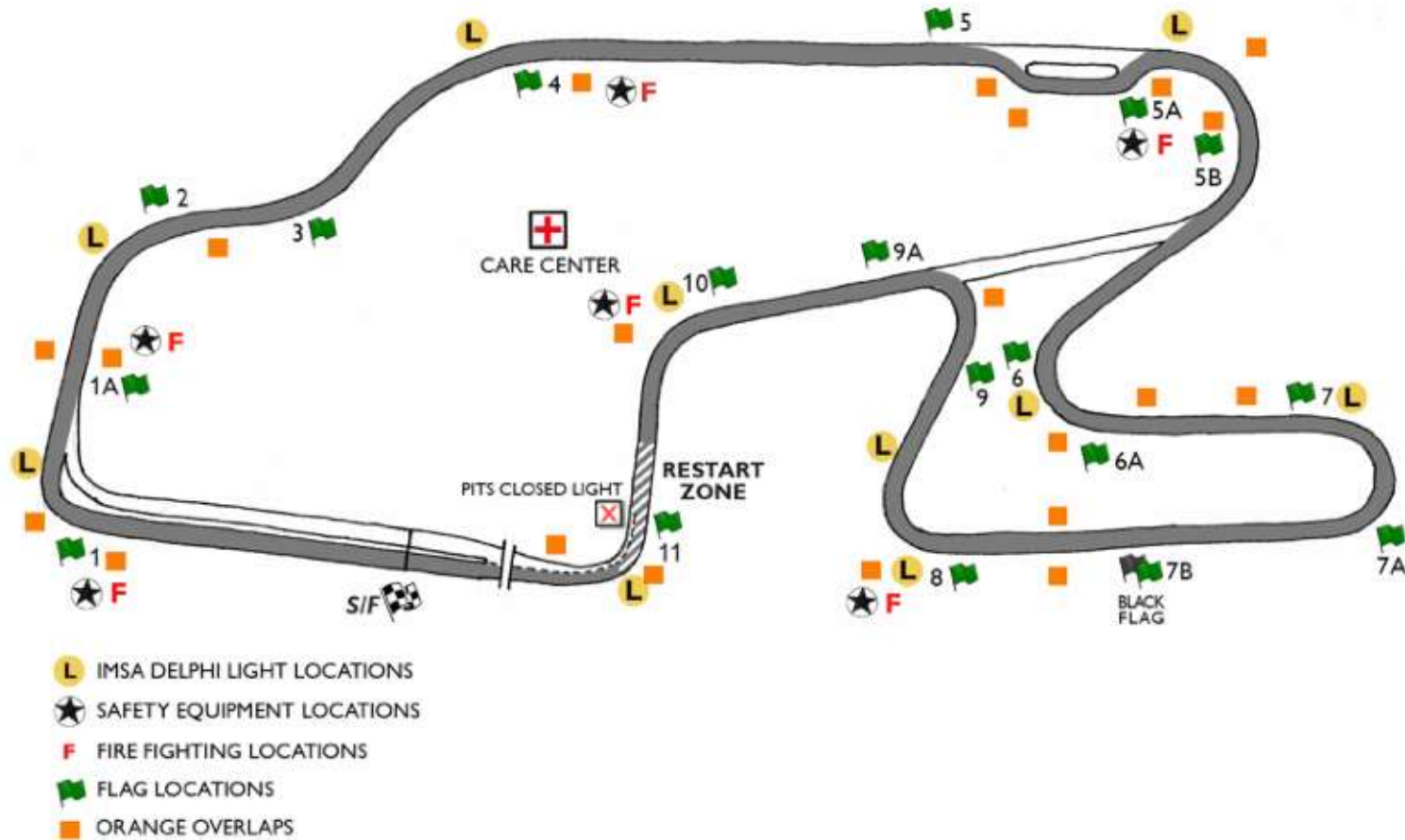
- Care Center is located East of IMSA Paddock (red shaded area)
- Refer to Official Schedule / SR for Care Center hours of operation



# OFFICIAL TRACK MAP



## 2026 SAHLEN'S SIX HOURS OF THE GLEN



# PIT IN

Be clear with Car placement exiting T10.  
Stay Driver's RT.

Be aware of Cars behind.



# PLSL BEGINS



# PIT LANE PROTOCOL



# PENALTY BOX

Located Driver's right at Pit Exit.



# PIT EXIT/PLSL ENDS



# PIT EXIT MERGE

CARS EXITING THE PIT LANE MUST REMAIN  
TWO WHEELS RIGHT OF THE YELLOW LINE

STAY RIGHT TO TURN 2

RESPECT THE SPEED DIFFERENCE OF THOSE  
ALREADY ON TRACK



# ORANGE OVERLAPS



# TRACK LIMITS – T1



# SHORT CUT – T5



# TRACK LIMITS – T8



# TRACK LIMITS – T10



# SHORT COURSE RE-ENTRY



# RED FLAG DURING PRACTICE

29.10.1. (SSR) Red Flag, Practice. Any Driver involved in an incident or a concurrent incident that initiates a red flag stoppage in a Practice Session may be penalized by deletion of their fastest timed lap from Qualifying and may be prohibited from further participation.

“Involved in an incident” includes single Car **Driver Error** incidents (stuck in gravel, crash, etc...)

# IMSA TRACK SERVICES

## IMSA CHASE VEHICLES

- Chase 1 | Porsche Cayenne GTS
- Chase 2 | Porsche Cayenne GTS
- Chase 3 | Ford F-150
- Chase 4 | Ford F-150

## ON-TRACK ASSISTANCE

- Communication with Track Services Medic
- Neutral and power shut off
- Follow direction of on-scene Track Services personnel
- Maintain a safe speed and distance when passing on-track incidents with Track Services team members present

Contact: Roy Spielmann 414.702.0905



IMSA AMR Porsche Rapid Response Vehicles PORSCHE CAYENNE GTS



IMSA AMR Ford Raptor Recovery Trucks FORD F-150 RAPTOR

# ACCESSING EMERGENCY SERVICES

## EMS/MEDICAL

- For emergency assistance (24 hours per day), dial 911. The call is captured by Schuyler County 911 Center and directed to WGI 911 Communications for dispatch.
- For non-emergency assistance during hours of operation, go to Infield Care Center. If Infield Care Center is closed, call 911.

## LAW ENFORCEMENT AND FIRE DEPARTMENT

- For a fire assistance (24 hours per day), dial 911. The call is captured by Schuyler County 911 Center and will be directed to WGI 911 Communications for dispatch.

# IMSA SEVERE WEATHER PLAN

- IMSA uses the DTN Weather Service with Lightning Detection.
- Notifications are sent (as in past years):
  - Within 30 miles of the track – Advisory message sent for informational purposes.
  - Within 20 miles of the track – Cautionary message sent to increase awareness and trigger protective actions for personnel and equipment.
  - Within 8 miles of the track – Full-Stop message sent for personnel to stop all activities and seek shelter due to potentially dangerous conditions.
    - IMSA continues to send periodic updates through the messaging service while on-track activities are under a “full-stop”.
  - When severe weather has moved out of the area, an “all-clear” message is transmitted.

**IMSA uses an internal messaging service. Text messages are sent to all credentialed attendees for an Event. There is no need to provide a recipient list.**

# PORSCHE PENFED DRIVER'S LOUNGE

## PORSCHE PENFED DRIVER'S LOUNGE Sahlen's Six Hours of the Glen

**PORSCHE**  
CARRERA CUP  
NORTH AMERICA



**DATE:** 25 – 27 June, 2026

**25 JUN THURSDAY:** Breakfast 7:00 – 10:00am | Lunch 11:00am – 2:00pm

**26 JUN FRIDAY:** Breakfast 7:00 – 10:00am | Lunch 11:30am – 2:30pm  
Dinner 4:30 – 7:00pm

**27 JUN SATURDAY:** Breakfast 7:00 – 10:00am | Lunch 11:00am – 2:00pm

**LOCATION:** Porsche PenFed Driver's Lounge

**RSVP:** Please register your guest count, including; drivers, team members, and VIP guests at the latest by Tuesday, 16 June, 2026.



**RACEBORN** |||| **75** YEARS OF PORSCHE  
MOTORSPORT



# PROMOTIONAL FAN ENGAGEMENT OPPORTUNITIES

## **Watkins Glen International**

Thursday, June 25 | IMSA Preview Party at Seneca Lodge

## **Road America**

Thursday, July 30 | IMSA Elkhart Lake Welcome Party

## **Indianapolis Motor Speedway**

Thursday, September 17 | Battle On The Bricks Street Festival

## **Motul Petit Le Mans**

Tuesday, September 29 | Kickoff Party Suwanee Town Center



**TO LEARN MORE CONTACT**

Emily Nash | [enash@imsa.com](mailto:enash@imsa.com) , Hailey Harbrecht | [hharbrecht@imsa.com](mailto:hharbrecht@imsa.com)

# PORSCHE CARRERA CUP NORTH AMERICA

## DRIVER AND TEAM MANAGER BRIEFING: WATKINS GLEN



# PCCNA AUTOGRAPH SESSION

## PCCNA DRIVER AUTOGRAPH SESSION

- Friday, June 26 1:00 pm – 1:30 pm
- Fan Zone at IMSA Merchandise

# POST-QUALIFYING TECHNICAL INSPECTION

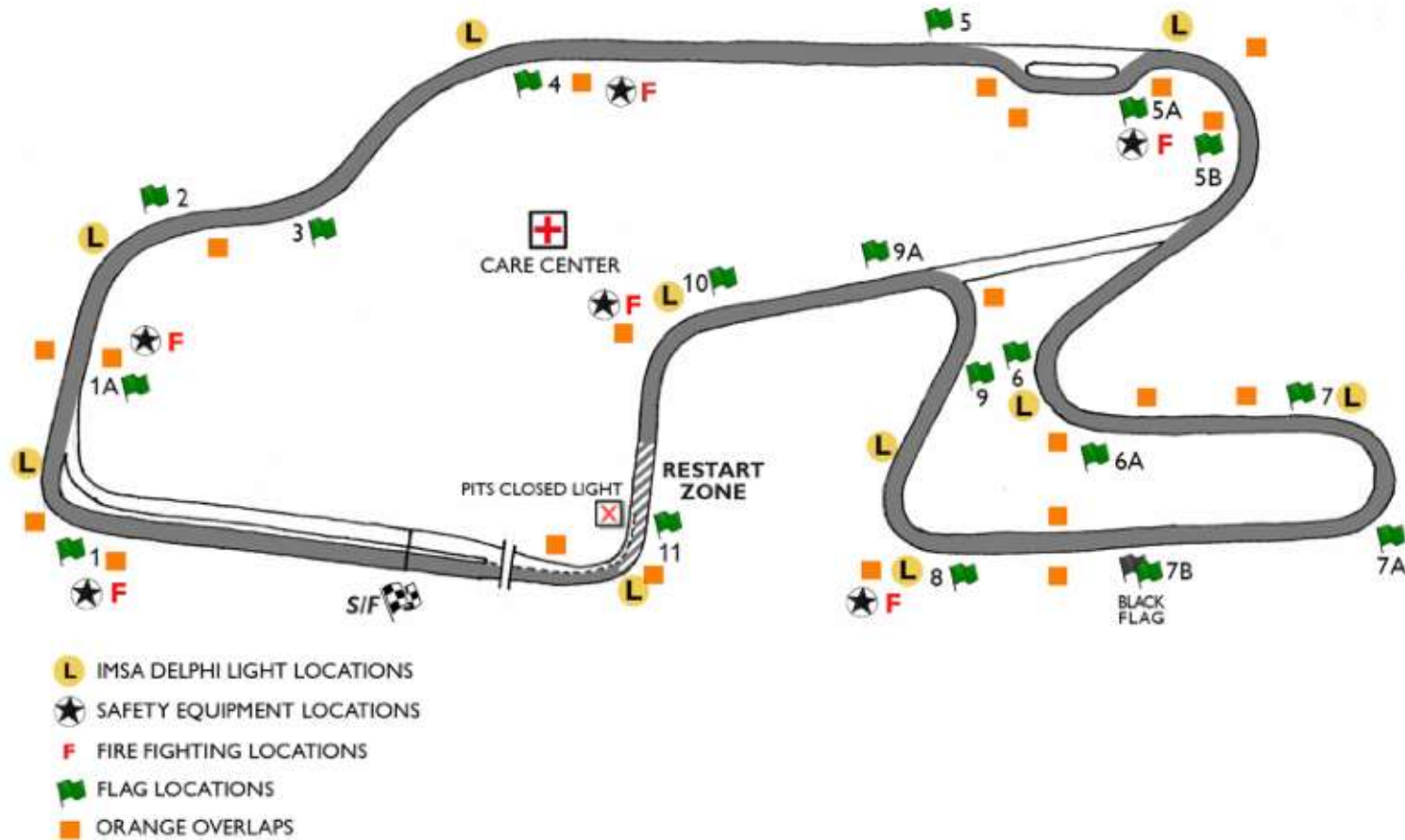
50.1. (SSR) When the Checkered Flag is displayed, all Cars, as directed by the IMSA Officials, must proceed to Impound directly, with a Team representative if so directed, and under the supervision of the IMSA Officials. **A Car not driven directly and immediately to Impound is subject to penalty.**

- Particularly following Qualifying, Drivers must deliver any Cars selected for Impound directly to the Technical Inspection area without delay. Failure to comply may result in penalty. As Technical Inspection resources will be concentrated on processing efficiency, Paddock guidance to the technical inspection area will be limited. Competitors are responsible for knowing and fulfilling their Impound obligations under the regulations.

# OFFICIAL TRACK MAP



## 2026 SAHLEN'S SIX HOURS OF THE GLEN



# PRE-RACE PROCEDURES

REFER TO THE MxM

# RACE

One (1) FORMATION lap

Stay with Safety Car until Safety Car enters pits

Pack up after T8

Pair up after T9 (No more tire scrubbing)

Acceleration Point (Polesitter)

Jump/False start Reviews

- Gaps
- Timed/Early Acceleration
- Out of Line
- Column Passing – Passing cars in your column is NOT allowed until across the S/F line

Official Race start is FIRST time by

# FULL COURSE YELLOW

Failure to maintain proper Safety Car speed and correct gaps between Cars, or otherwise initiate manipulative action to gap Cars, is prohibited and subject to penalty.

Race Control radio, double yellow flags displayed

Response vehicles may begin to move as soon as FCY is announced

Leader to Safety Car speed, all Cars pack up – respect the area of incident/Track Services personnel

- RC instructions regarding track condition over radio
- SC dispatched from Baker Gate (T1/2, DR)

RESTART

- Maintain SC speed, let SC get away, *no more tire scrubbing after Turn 9*

RESTART ACCELERATION ZONE – Entry to T11

- Passing on display of green flag

# RESTART ACCELERATION ZONE

Restart acceleration zone is the entry to Turn 11.

Passing is permitted when the Green Flag is displayed.



# WET TIRE CHANGE PROCESS

If Race is not started as declared 'Wet', the following process is used:

- Race Control announces FCY and deploys Safety Car to collect the field.
- The running order of the Cars is taken at S/F for all Cars.
- After all Cars have crossed S/F but before arriving at the pit entry, Race Control declares Red Flag.
- The Race Director declares the Race 'Wet'.
- The Safety Car leads the field into the pit lane.
- Cars are directed to their pit boxes for the exclusive purpose of changing to wet tires, no other work.
- Teams are given Five (5) minutes to change tires.
- Cars unable to continue must inform their Pit Official.
- The Pit Officials will call the order of the Cars as taken at S/F to release from their pit box one at a time and proceed on track behind the Safety Car.
- Changes to the running order in case of any misfortune after crossing S/F are restored for the restart.
- A 'confirmation lap' is performed to check the order of the Cars and to direct any necessary changes.
- The Race is resumed from FCY as normal.

# WGI SPECIFICS

## Miami

- High Level of Aggression
- High Level of Optimism

## WATKINS GLEN SPECIFICS

- Qualifying- Do Not Impede Others
- T1- Race Start - Survive Turn 1
- Track Limits T1, T8, T10 (Races: Warning, Final Warning, 10 Second Post Race, Drive-Through)
- Turn 5 Bus Stop - Cars on track have right away, rejoin safely.
- High Consequence Race Track
- Respect on Track/Driving Standards

# PORSCHE PENFED DRIVER'S LOUNGE

## PORSCHE PENFED DRIVER'S LOUNGE Sahlen's Six Hours of the Glen

**PORSCHE**  
CARRERA CUP  
NORTH AMERICA



**DATE:** 25 – 27 June, 2026

**25 JUN THURSDAY:** Breakfast 7:00 – 10:00am | Lunch 11:00am – 2:00pm

**26 JUN FRIDAY:** Breakfast 7:00 – 10:00am | Lunch 11:30am – 2:30pm  
Dinner 4:30 – 7:00pm

**27 JUN SATURDAY:** Breakfast 7:00 – 10:00am | Lunch 11:00am – 2:00pm

**LOCATION:** Porsche PenFed Driver's Lounge

**RSVP:** Please register your guest count, including; drivers, team members, and VIP guests at the latest by Tuesday, 16 June, 2026.



**RACEBORN** |||| **75** YEARS OF PORSCHE MOTORSPORT



# THANK YOU

**PORSCHE**  
**CARRERA CUP**  
**NORTH AMERICA**

