

LAMBORGHINI SUPER TROFEO

TEAM MANAGER BRIEFING: WATKINS GLEN



SERIES CONTACTS



SQUADRA CORSE



Erik Skirmants	Senior Motorsport Manager	(571) 240-8193
Jason Young	Senior Specialist Super Trofeo	(404) 285-1296
Craig Jamison	Parts Support	(248) 943-7343
Andrew Bosscher	Engineering Support	(586) 709-8812
Rachel Crawford	Hospitality Coordinator	(248) 935-9609
Danny Van Dongen	Hankook Motorsports USA	(305) 809-0356

Todd Snyder	Race Director	(860) 248-9115
Duane Sampson	Director, Single Make	(386) 285-7021
Austin Farr	Coordinator, Single Make	(386) 293-1702
Cory Posocco	Logistics & Event Ops	(386) 566 8313
Holly Langer	Paddock Set-Up	(386) 871-0241
Scott Ellison	Technical	(734) 621-9130
Johnny Knotts	Pit Lane Supervisor	(813) 763-4669
Carol Mueller	Administration	(386) 262-8932
David Pees	Timing & Scoring	(386) 308-8866
Ryan McLean	Medical Liaison	(386) 285-6913
Roy Spielmann	Track Services	(414) 702-0905
Robert Bosworth	Safety & Security	(704) 728-8087

IMSA RESOURCES

IMSA COMPETITOR LANDING PAGE:

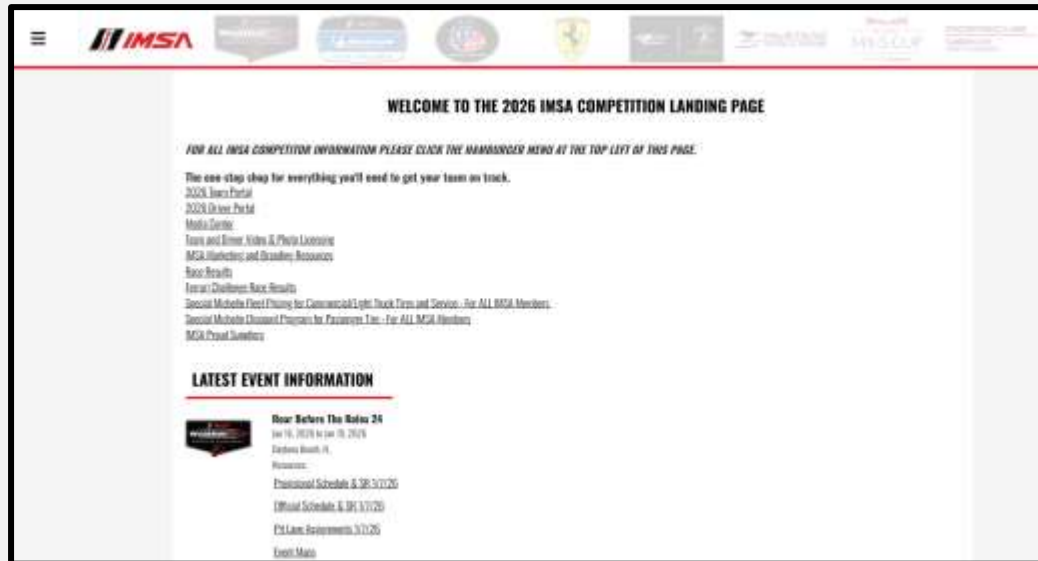
<https://www.imsa.com/competitors/>

- Team Portal
- Event Information
- Rules & Regulations
- Marketing & Branding Page
- All Event Schedules published

IMSA NOTICE BOARD:

<http://results.imsa.com/>

- Driver & TM Briefings
- Entry Lists
- Minute by Minute
- Timing Results
- Penalties



LST EVENT INFORMATION

The screenshot shows the IMSA website's navigation menu on the left, including links for HOME, EVENT INFORMATION, TEST EVENT INFORMATION, RULES & REGULATIONS, MARKETING & BRANDING, IMSA, and PROUD SUPPLIERS. The main content area features a banner for the 2026 Lamborghini Super Trofeo with the text "FROM THE FIRST TO THE LAST TURN: STRAIGHT PERFORMANCE." and a "Find out more" button. Below the banner, the heading "2026 LAMBORGHINI SUPER TROFEO EVENT INFORMATION" is displayed. A red arrow points from this heading towards the right-hand side of the slide.

2026 COMPETITOR RESOURCES:

[2026 LST Series Brochure](#)

[2026 LST Brand Guide](#)

[2026 LST Electronics Ordering](#)

2026 EVENTS



Watkins Glen International

Jun 25 to Jun 27

Watkins Glen, NY

Download:

[Provisional Schedule & SR 5/20/26](#)

[Post Event Stayover Release Form](#)

TO IMSA REGISTRATION

Directions

1. Take County Route 16 (Montour-Townsend Rd) to Bronson Hill Rd (Gate 4A)
2. Take first left to enter IMSA Registration Parking located in Lot 3. IMSA Registration is across Bronson Hill Rd in WGI Registration Building (see inset photo)

Notes

- Refer to Official Schedule / SR for Registration hours of operation
- Address: 1999 Bronson Hill Rd, Watkins Glen, NY 14891



EVENT INFORMATION

PARKING

- Through Saturday, June 27, IMSA annual parking passes **are only permitted at Gate 5 and are not valid for parking inside the facility.**
- Only on Sunday, June 28, IMSA annual parking passes **are permitted** for parking inside the Paddock based on availability.

INFIELD PARKING PASSES

- One (1) each per entered LST Car.
- Only credentialed personnel with proper parking passes are permitted to enter Gate 2 and park in the designated competitor parking areas.
- Infield parking in track-designated lots may be available for purchase from the WGI main ticket office or at Gate 2.

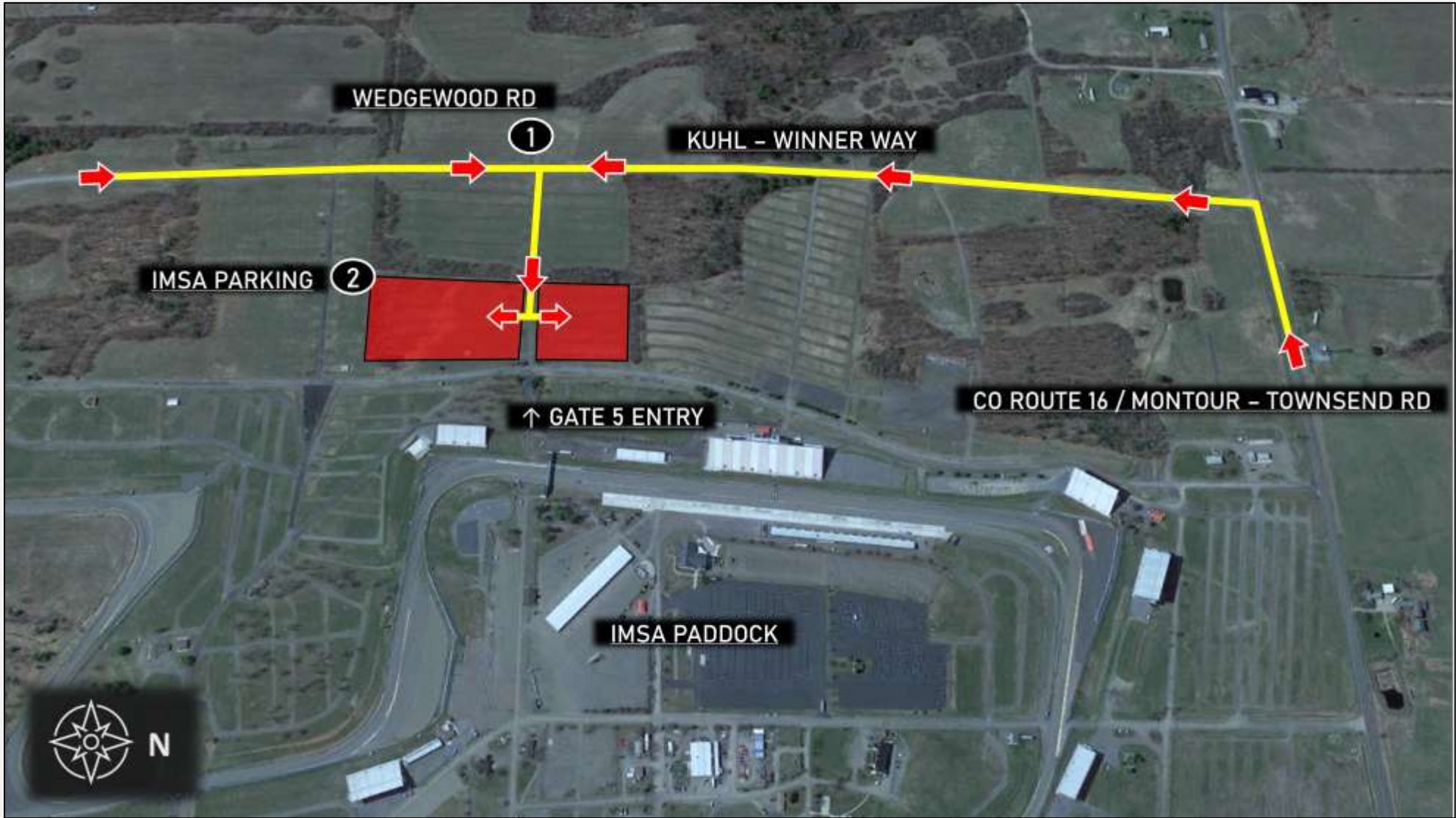
TO IMSA GATE 5 PARKING

Directions

1. Take Kuhl-Winner Way to Wedgewood Rd
2. Proceed to designated IMSA Gate 5 Parking area (red shaded areas)

Notes

- IMSA annual hangtag required for entry
- Use Gate 5 and Walkover Bridge to access IMSA paddock areas
- Gate 5 entry will be closed daily from 12:00 AM – 5:30 AM. Contact WGI Security for after-hours access



PADDOCK/GOLF CART PASSES - **IMSA**

Annual Paddock and Pit Lane Golf Cart / Tugger passes for 2026.

- **LST** Teams are allotted **one (1)** annual Paddock pass per entered Car.
- **LST** Teams are allotted **one (1)** annual Pit & Paddock pass for tugger pit lane access per entered Car.
- **A Team must return a previously issued Annual pass to obtain a replacement.**
 - Available in the WeatherTech Tech Trailer.
- IMSA ADA Golf Cart passes - permits access during restricted Track Walks.
 - Available from IMSA Registration as appropriate with proof of ADA.
- **Improper use and/or falsification of any credential, parking pass and/or access pass is prohibited. Penalty: minimum \$5,000 fine and suspension or revocation of Membership and/or any other penalty available per Art. 57.**



PADDOCK

**PROHIBITED
ANY ONE, TWO OR
THREE-WHEEL FORM OF
TRANSPORTATION**

**ONLY PROPERLY
PERMITTED VEHICLES ACCEPTED
EXCEPTIONS FOR VESTED MEDIA
AND ADA TRANSPORT**

Motorcycles, drones, bicycles, skateboards, rollerblades and other non-motorized transportation, as well as motor scooters of one, two or three-wheels and/or designed to transport one or two persons, are prohibited in the garage, pit and/or Paddock areas except authorized power-driven mobility devices (ADA requirements - Americans with Disabilities Act), and accredited and vested media personnel.

Pit vehicles must only be operated by an IMSA credential holder. Motorized carts and similar 3- or 4-wheeled conveyances must not be driven into pit lane except pit equipment approved for a Series or as specified in the SR.

Such use in the Paddock must be for legitimate purposes only.

Excessive speed and/or unsafe operation is prohibited. Participants must abide by state laws and Promoter restrictions regarding licensing, maximum speed, helmet requirement and use.

Such conveyances may be prohibited at certain Events or in certain areas of each facility by local ordinance or Promoter limitation.

IMSA SEVERE WEATHER PLAN

- IMSA uses the DTN Weather Service with Lightning Detection.
- Notifications are sent (as in past years):
 - Within 30 miles of the track – Advisory message sent for informational purposes.
 - Within 20 miles of the track – Cautionary message sent to increase awareness and trigger protective actions for personnel and equipment.
 - Within 8 miles of the track – Full-Stop message sent for personnel to stop all activities and seek shelter due to potentially dangerous conditions.
 - IMSA continues to send periodic updates through the messaging service while on-track activities are under a “full-stop”.
 - When severe weather has moved out of the area, an “all-clear” message is transmitted.

IMSA uses an internal messaging service. Text messages are sent to all credentialed attendees for an Event. There is no need to provide a recipient list.

ACCESSING EMERGENCY SERVICES

EMS/MEDICAL

- For emergency assistance (24 hours per day), dial 911. The call is captured by Schuyler County 911 Center and directed to WGI 911 Communications for dispatch.
- For non-emergency assistance during hours of operation, go to Infield Care Center. If Infield Care Center is closed, call 911.

LAW ENFORCEMENT AND FIRE DEPARTMENT

- For a fire assistance (24 hours per day), dial 911. The call is captured by Schuyler County 911 Center and directed to WGI 911 Communications for dispatch.

PADDOCK OPERATIONS

- **20.3.2.** Driving of and/or riding on any vehicles (including Cars, golf carts, and pit vehicles) in the Paddock or facility deemed dangerous, erratic, of inappropriately excessive speed for the circumstances or established limits and/or in violation of the RULES is prohibited and subject to penalty.
 - A. Cars must only be driven/operated by an IMSA credentialed Driver or Crew Member. Passengers and/or unsecured exterior materials prohibited.



PIT LANE

Pit Lane Assignments – can be found at [Competitors | IMSA](#).

- All pit boxes are 21 feet.
- Pit Lane Distance: 19,533 inches

OBLIGATORY PIT STOP TIME:

- 90 seconds – Two, (2) Drivers
- 93 seconds – Solo, (1) Driver

PIT LANE SUPPORT:

- Located at IMSA Timing Stand on Start/Finish or IMSATIMING@IMSA.COM

PIT LANE

PIT LANE PROCEDURES

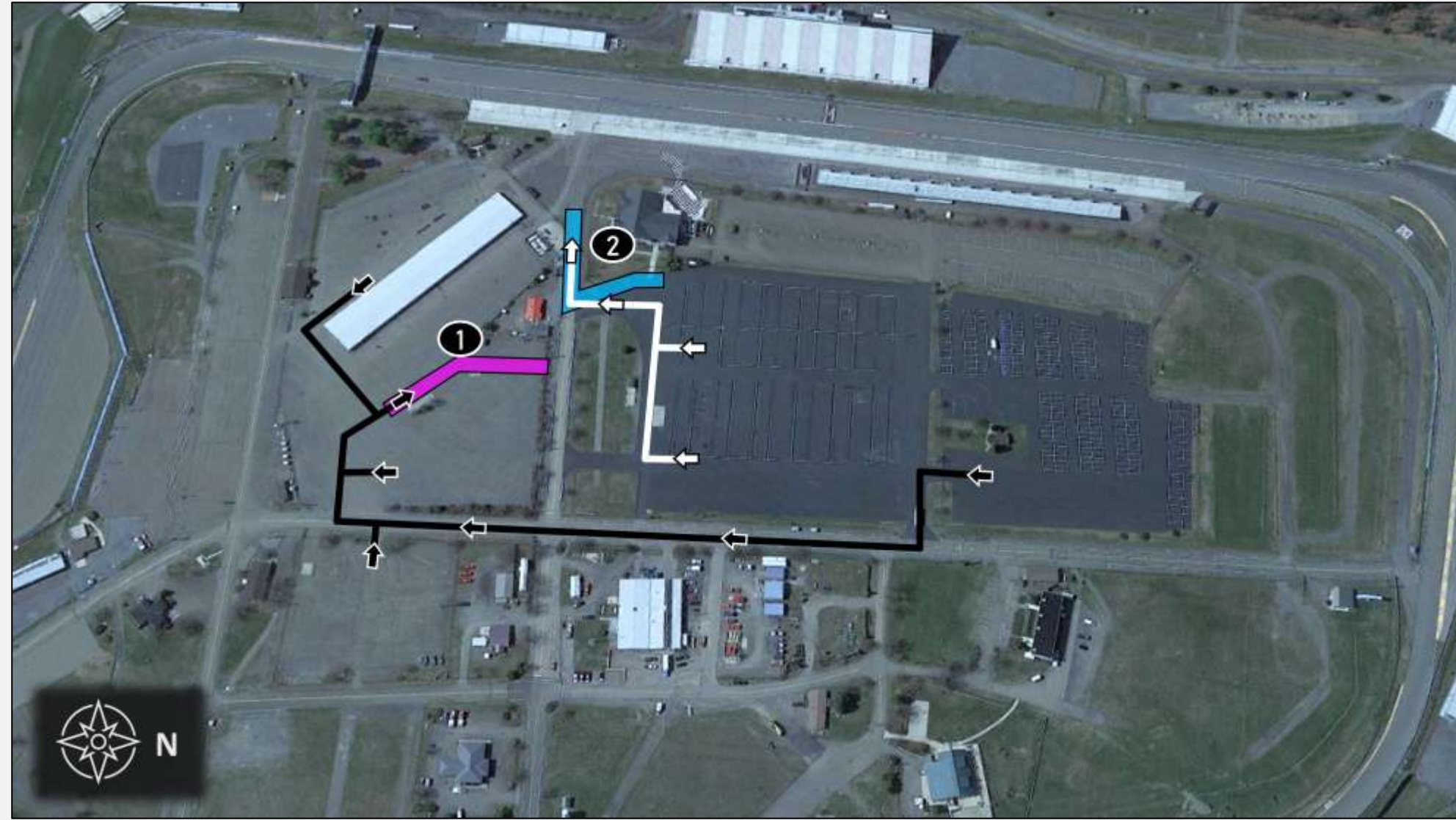
- Tuggers should be against the Pit Wall
- Cars should be parallel with the Pit Wall
- Cars should be properly positioned within the limits of their own pit box
- IMSA will define Pit Box size at TM meetings.
 - This may include dimensions, lines, tape and/or seams on pavement
- IMSA Pit Officials are the only persons who determine violations using only official resources available to them and to Race Control



FALSE GRID LOCATIONS

Locations

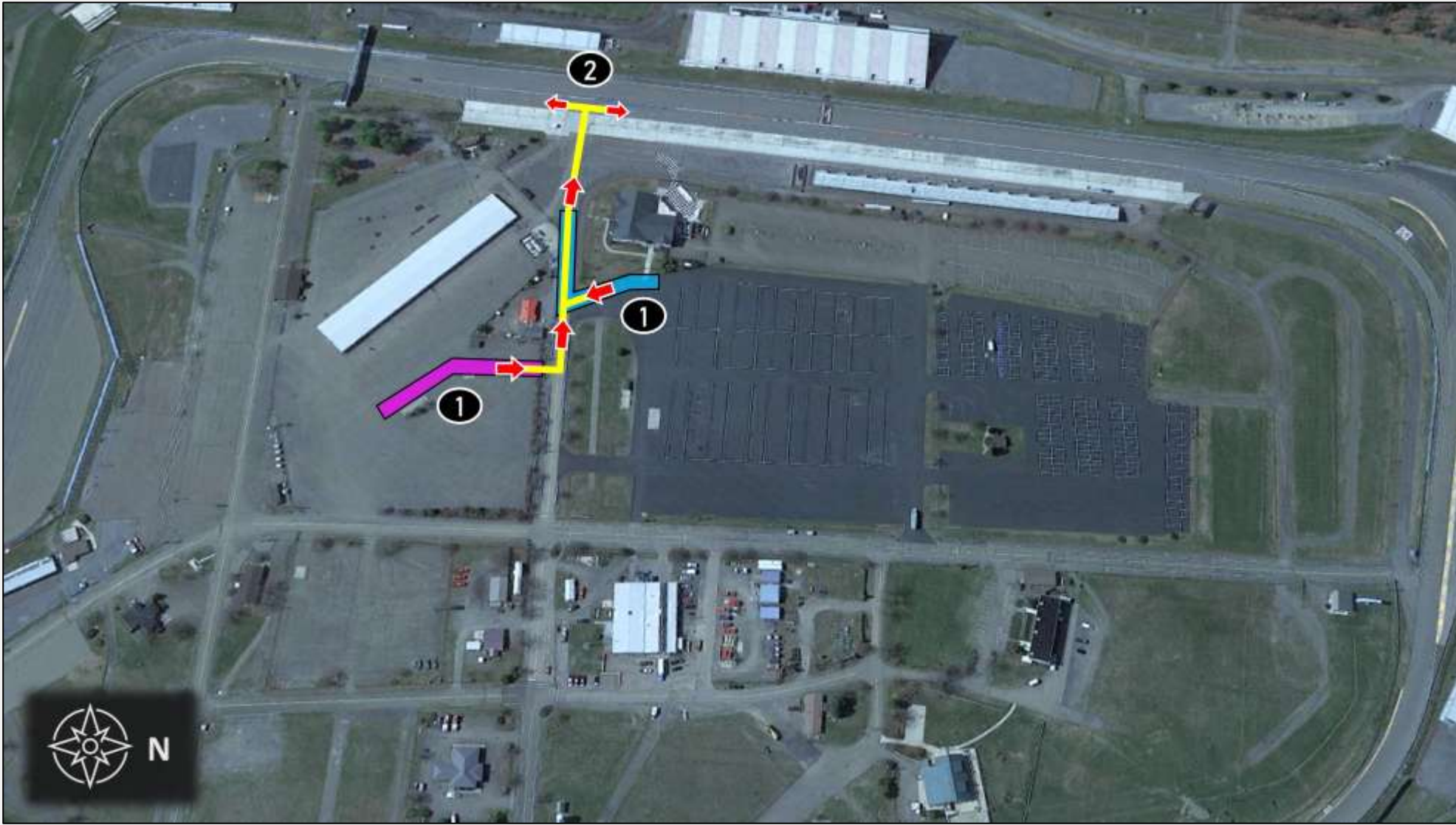
1. False Grid for Single-Make (PCCNA, LSTNA, MCNA) and IMSA Michelin Pilot Challenge
2. False Grid for IMSA WeatherTech SportsCar Championship



TO PIT LANE

Directions

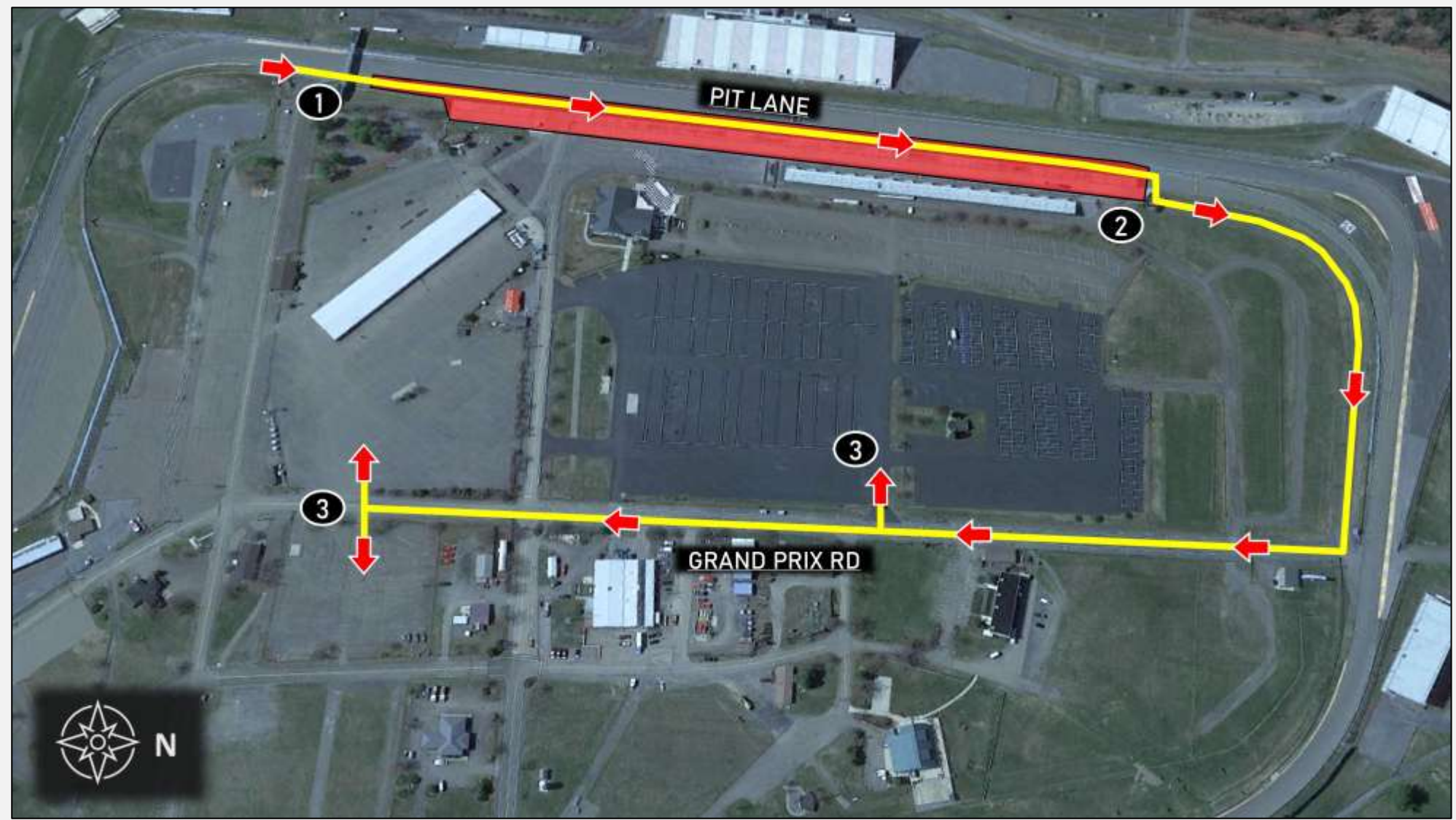
1. Exit respective False Grid and proceed on Pit Lane Access Road
2. Enter Pit Lane and proceed to assigned Pit Box. Traffic may proceed on either direction on Pit Lane



TO PADDOCK

Directions

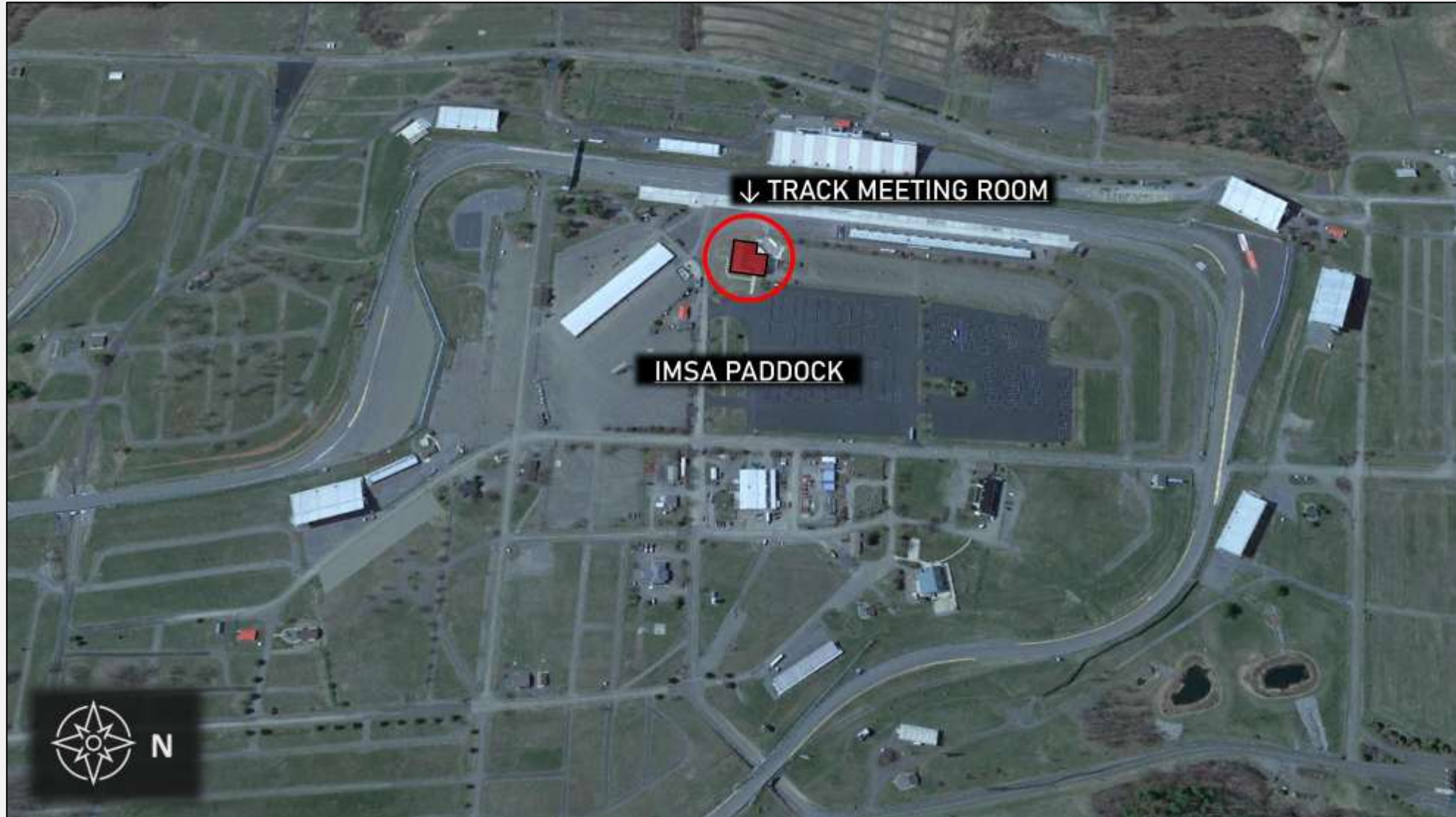
1. Exit track onto Pit Lane and proceed down Pit Lane
2. Proceed to Paddock Access Road, continuing to Grand Prix Rd
3. Enter Series Paddock



TRACK MEETING ROOM LOCATION

Notes

- Track Meeting Room is located in Watkins Glen Media Center, top floor
- Proper credentials required for paddock entry
- Refer to Official Schedule / SR for Series-Specific Briefing details



IMSA TRACK SERVICES

IMSA CHASE VEHICLES

- Chase 1 | Porsche Cayenne GTS
- Chase 2 | Porsche Cayenne GTS
- Chase 3 | Ford F-150
- Chase 4 | Ford F-150

ON-TRACK ASSISTANCE

- Communication with Track Services Medic
- Neutral and power shut off
- Follow direction of on-scene Track Services personnel
- Maintain a safe speed and distance when passing on-track incidents with Track Services team members present

Contact: Roy Spielmann 414.702.0905



IMSA AMR Porsche Rapid Response Vehicles PORSCHE CAYENNE GTS



IMSA AMR Ford Raptor Recovery Trucks

FORD F-150 RAPTOR

CARE CENTER LOCATION

Notes

- Care Center is located East of IMSA Paddock (red shaded area)
- Refer to Official Schedule / SR for Care Center hours of operation



POST-QUALIFYING TECHNICAL INSPECTION

50.1. (SSR) When the Checkered Flag is displayed, all Cars, as directed by the IMSA Officials, must proceed to Impound directly, with a Team representative if so directed, and under the supervision of the IMSA Officials. **A Car not driven directly and immediately to Impound is subject to penalty.**

- Particularly following Qualifying, Drivers must deliver any Cars selected for Impound directly to the Technical Inspection area without delay. Failure to comply may result in penalty. As Technical Inspection resources will be concentrated on processing efficiency, Paddock guidance to the technical inspection area will be limited. Competitors are responsible for knowing and fulfilling their Impound obligations under the regulations.

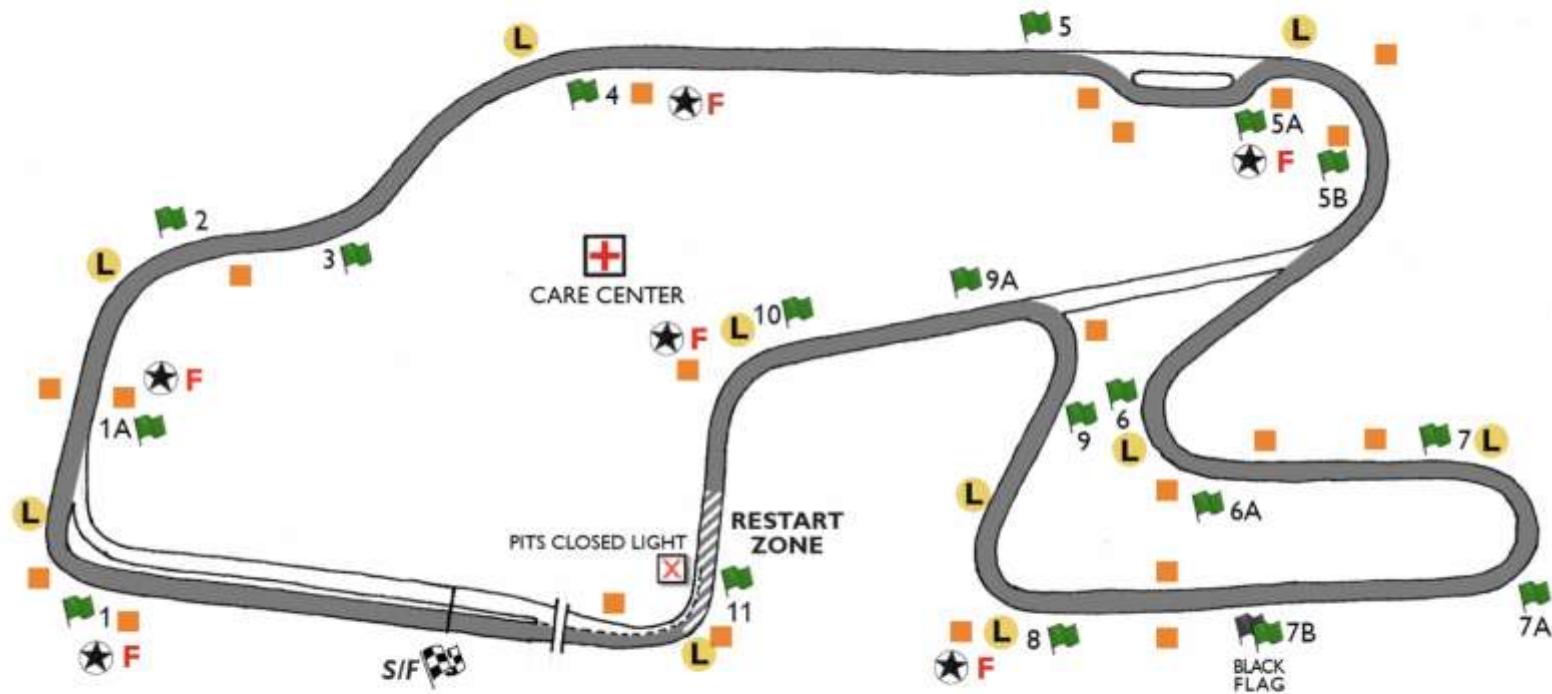
SERIES REQUIRED IN-CAR CAMERA

Revisions to the In-Car Camera requirements per 16.8.1 (SSR) will be published shortly via a Competition Bulletin and Regulations update – compliance to these requirements will be verified in Scrutineering.

OFFICIAL TRACK MAP



2026 SAHLEN'S SIX HOURS OF THE GLEN



- L** IMSA DELPHI LIGHT LOCATIONS
- ★** SAFETY EQUIPMENT LOCATIONS
- F** FIRE FIGHTING LOCATIONS
- 🚩** FLAG LOCATIONS
- ORANGE OVERLAPS

PIT LANE PROTOCOL



PIT EXIT / PLSL ENDS



PIT EXIT MERGE

CARS EXITING PIT LANE
MUST REMAIN TWO WHEELS
RIGHT OF THE YELLOW LINE

STAY RIGHT TO TURN 2

RESPECT THE SPEED
DIFFERENCE OF THOSE
ALREADY ON TRACK



ORANGE OVERLAPS



TRACK LIMITS T1



SHORT CUT T5



TRACK LIMITS T8



TRACK LIMITS T10



TRACK LIMIT PENALTIES (Per Car)

PRACTICE SESSIONS

FIRST – Warning

SECOND – Final Warning

THIRD OR MORE – D.T.

QUALIFYING

LAP(S) INVALIDATED

FIRST – Warning

SECOND – Final Warning

THIRD OR MORE – D.T.

SHORT COURSE RE-ENTRY



PIT IN MERGE



PLSL BEGINS



RED FLAG PROCEDURE

PRACTICE

- Upon release from false grid, Cars may line up at pit exit
- During red flags, Cars may line up at pit exit

QUALIFYING

- Upon release from false grid, Cars must NOT line up at pit exit and must go to their Pit Box and wait for the command from RC to release
- During red flags, Cars must NOT line up at pit exit and must go to their Pit Box and wait for the command from RC to release

QUALIFYING LINE UP PROCEDURE

- All Cars from False Grid to their Pit Box
- 1 minute before Green, RC announces Pro Cars may line up at Pit Exit
- At Display of Green Flag, all remaining Cars may leave their Pit Box
- Pro Cars encouraged to make it a slow out lap

38 PROMOTIONAL FAN ENGAGEMENT OPPORTUNITIES

Watkins Glen International

Thursday, June 25 | IMSA Preview Party at Seneca Lodge

Road America

Thursday, July 30 | IMSA Elkhart Lake Welcome Party

Indianapolis Motor Speedway

Thursday, September 17 | Battle On The Bricks Street Festival



TO LEARN MORE CONTACT

Emily Nash | enash@imsa.com , Hailey Harbrecht | hharbrecht@imsa.com

THANK YOU



SQUADRA CORSE



LAMBORGHINI SUPER TROFEO

DRIVER BRIEFING: WATKINS GLEN



PRE-RACE

- REFER TO MxM

RACE START

One (1) Formation Lap

Pack up from T7 to T8, Pair up T8 to T10, Stay with Safety Car

Safety Car enters Pit Lane

Acceleration point

Polesitter to maintain pace of the Safety Car to acceleration point

No abrupt changes of speed to Green Flag

Polesitter(s) please remain after meeting

Column Passing and Lane Changes are prohibited prior to the start line

Jump/False start Reviews

Gaps

Timed/Early Acceleration

Out of Line

Column Passing

FULL COURSE YELLOW

Race Control radio, in-car lights, trackside lights, double yellow flags displayed

FCY during mandatory pit stop - PITS are CLOSED to complete mandatory pit stop
Pits remain open for Emergency Service

Safety VEHICLES may begin to move as soon as FCY is ANNOUNCED

Leader to Safety Car speed, all Cars pack up – respect the area of incident/Track Services personnel

- Safety Car dispatches from Baker Gate (Between T1 and T2)
- RC instructions regarding track condition over radio

Lights out by Turn 9

- Maintain SC speed, let SC get away, *no more tire scrubbing*

Restart Acceleration Zone – Turn 11

- Passing can occur at the display of green flag
- Expect restarts to be faster than original start

PIT COMMIT / PIT CLOSED LIGHTS

- Must have part of Car touching and be to the right of the solid yellow line that divides the Racetrack from pit entry prior to the pit closed light illuminating in order to be considered committed to the pits



RESTART ACCELERATION ZONE

- Restart Acceleration Zone – T11
- Single file restarts
- Passing is permitted when the green flag is displayed



PIT STOP INFO

MINIMUM TIME PIT IN LOOP TO PIT OUT LOOP

- TWO DRIVERS = 90 SECONDS
- SOLO DRIVER = 93 SECONDS

PIT DISTANCE IS 19,533 INCHES



Driver must change Driver ID plug before leaving pit exit or it will not register.
Driver/Car may receive a Drive-Through to rectify late Driver ID plug changes.

Driving slower than 55kph in the fast lane may be penalized. Transition lane should be used if less than 60kph to not interfere with Cars in the fast lane.

ON TRACK

LOCAL YELLOWS

No passing

Slow to a safe speed

BLOCKING / DEFENDING INCREASES RESPONSIBILITY

Proactive vs. Reactive

Race how you would like to be raced

COEXISTENCE – MULTI CLASS RACING

Awareness

Coexist

Blue Flags / Car being passed be consistent!

ADDITIONAL PENALTIES

Race Control may impose larger than D.T. penalties for Incident Responsibility

Stop and Go

Stop and Hold

10 Second Penalty

The Race Director may apply a 10 second time penalty

Potential applications:

Jump start

PUY after the incident but before green flag

Incident responsibility that resulted in no change of position

10 second penalties are applied as the penalized Car crosses Start/Finish at the Checker

The 10 second penalty is intended to increase the range of penalty options in Sprint Races

RACE ENDS UNDER FCY

Article 49.1.6.B

(SSR) Should the Race end under Full Course Yellow (FCY), Cars must maintain the Safety Car speed and must remain in single file, maintaining a consistent gap of approximately two (2) Car lengths to the Car in front of them until crossing the Finish line after taking the checkered flag. Gamesmanship or manipulation of the pace or procedure is prohibited and may be penalized.

INCIDENT REVIEW PROCESS

Race Control will announce any incident to be reviewed DURING the Race

- If a Driver or Team feels an incident should be reviewed, it **MUST** be communicated to Race Control by the Checkered Flag
- Communicate to Pit Lane staff to relay to Race Control
 - Location
 - Time of Day and/or Lap
 - Car Number(s) involved
- RC will announce over radio that incident is under review

POST RACE

- REFER TO MxM
- ALL CARS TO PIT LANE AFTER CHECKER
 - IMSA PERSONNEL TO ASSIST IN SPLITTING PODIUM CARS IN PIT LANE
 - IMSA PERSONNEL TO ASSIST IN SPLITTING TECH CARS IN PIT LANE
 - CREW FOR PODIUM CARS MUST BE READY TO MOVE CARS OFF PIT LANE

WET TIRE CHANGE PROCESS

If Race is not started as declared 'Wet', the following process is used:

- Race Control announces FCY and deploys Safety Car to collect the field.
- The running order of the Cars is taken at S/F for all Cars.
- After all Cars have crossed S/F but before arriving at the pit entry, Race Control declares Red Flag.
- The Race Director declares the Race 'Wet'.
- The Safety Car leads the field into the pit lane.
- Cars are directed to their pit boxes for the exclusive purpose of changing to wet tires, no other work.
- Teams are given Five (5) minutes to change tires.
- Cars unable to continue must inform their Pit Official.
- The Pit Officials will call the order of the Cars as taken at S/F to release from their pit box one at a time and proceed on track behind the Safety Car.
- Changes to the running order in case of any misfortune after crossing S/F are restored for the restart.
- A 'confirmation lap' is performed to check the order of the Cars and to direct any necessary changes.
- The Race is resumed from FCY as normal.

THANK YOU



SQUADRA CORSE

