



# ***LP BUILDING SOLUTIONS 120 AT THE GLEN***

**SATURDAY, JUNE 27TH AT 1:00PM ET**

peacock   YouTube

# SERIES CONTACTS

Beaux Barfield	Race Director	(832) 260-1032
Brian Wilson	Series Manager	(386) 281-9494
Marisa Ross	Series Coordinator	(386) 293-1474
Gayle Burnham	Member Services	(386) 235-7800
Cory Posocco	Logistics & Event Ops	(386) 566-8313
Holly Langer	Paddock Layout	(386) 871-0241
David Pees	Timing & Scoring	(386) 308-8866
Eric Haverson	Technical	(386) 562-7214
Johnny Knotts	Pit Lane Supervisor	(813) 763-4669
Paul Walter	Sporting Regulations	(614) 598-6783
Robert Bosworth	Security & HV Safety	(704) 728-8087
Roy Spielmann	Track Services	(414) 702-0905
Ryan McLean	Medical Liaison	(386) 285-6913

[2026 IMSA Operational Contact List](#)

# IMSA RESOURCES

## IMSA COMPETITOR LANDING PAGE:

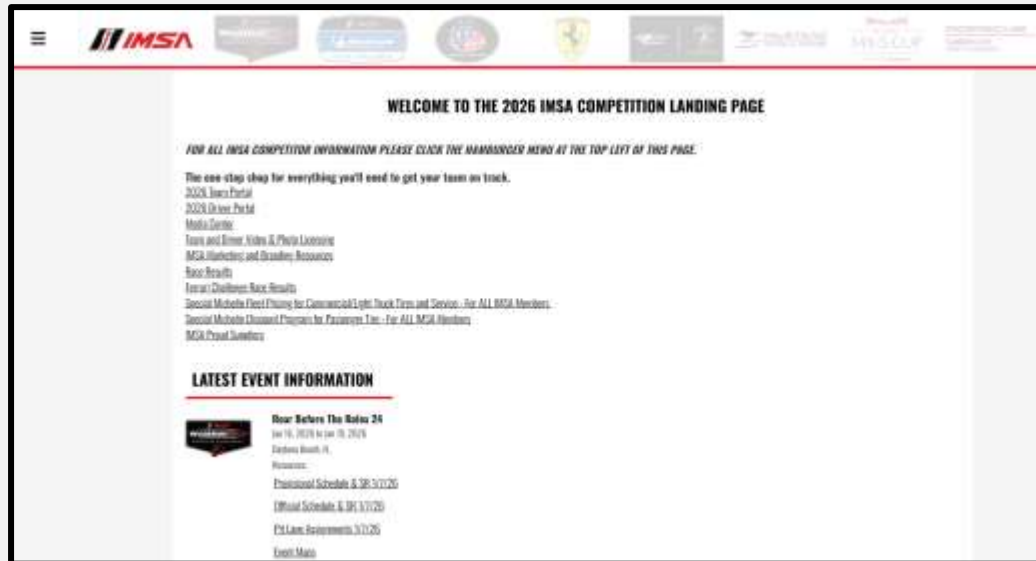
<https://www.imsa.com/competitors/>

- Team Portal
- Event Information
- Rules & Regulations
- Marketing & Branding Page
- All Event Schedules published

## IMSA NOTICE BOARD:

[IMSA - Noticeboard](#)

- Driver & TM Briefings
- Entry Lists
- Minute by Minute
- Timing Results
- Penalties



# POST-QUALIFYING TECHNICAL INSPECTION

## 50. IMPOUND

50.1. (SSR) When the Checkered Flag is displayed, all Cars, as directed by the IMSA Officials, must proceed to Impound directly, with a Team representative if so directed, and under the supervision of the IMSA Officials. **A Car not driven directly and immediately to Impound is subject to penalty.**

- Particularly following Qualifying, Drivers must deliver any Cars selected for Impound, directly to the Technical Inspection area without delay. Failure to comply may result in penalty. As Technical Inspection resources will be concentrated on processing efficiency, Paddock guidance to the technical inspection area will be limited. Competitors are responsible for knowing and fulfilling their Impound obligations under the regulations.

# IMSA TRACK SERVICES

## IMSA CHASE VEHICLES

- Chase 1 | Porsche Cayenne GTS
- Chase 2 | Porsche Cayenne GTS
- Chase 3 | Ford F-150
- Chase 4 | Ford F-150

## ON-TRACK ASSISTANCE

- Communication with Track Services Medic
- Neutral and power shut off
- Follow direction of on-scene Track Services personnel
- Maintain a safe speed and distance when passing on-track incidents with Track Services team members present

Contact: Roy Spielmann 414.702.0905

**01, 02**



IMSA AMR Porsche Rapid Response Vehicles PORSCHE CAYENNE GTS

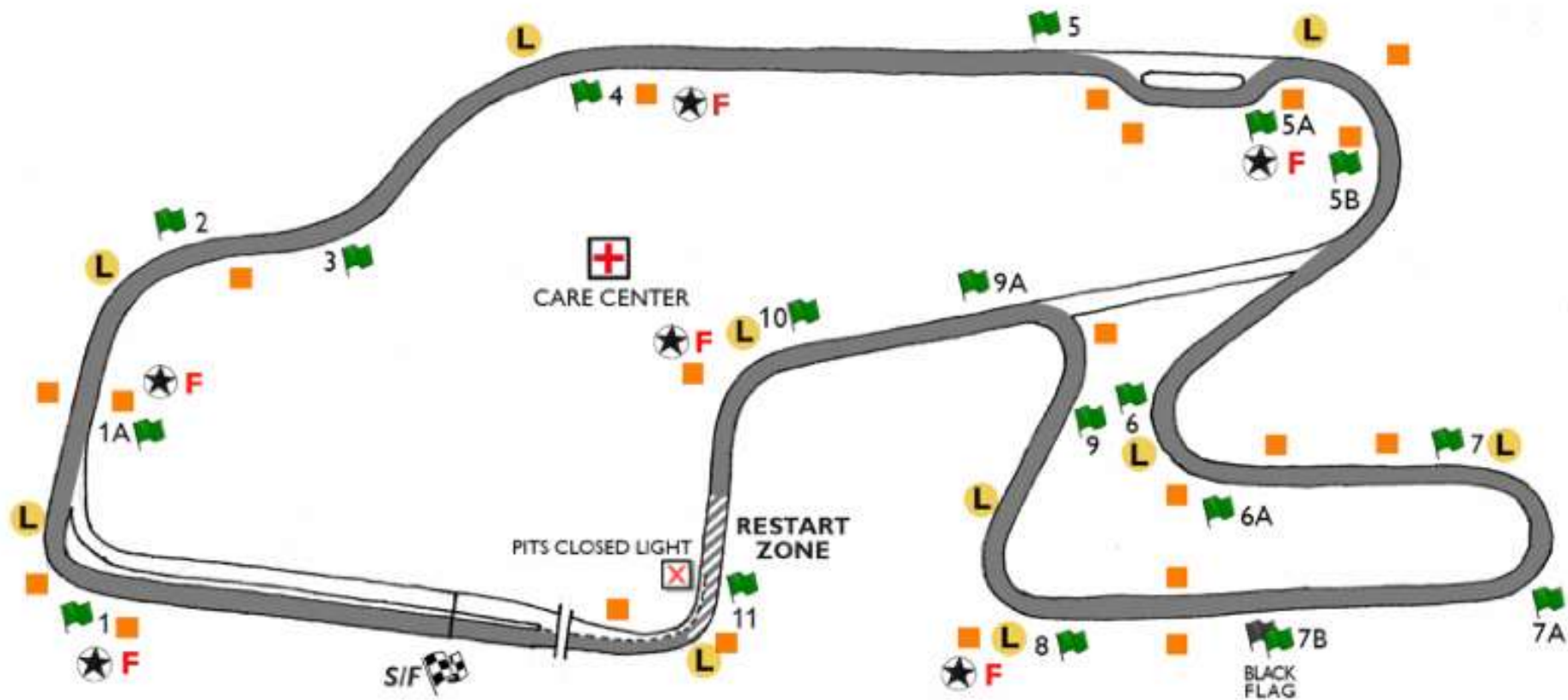
**03, 04**



IMSA AMR Ford Raptor Recovery Trucks FORD F-150 RAPTOR



# 2026 SAHLEN'S SIX HOURS OF THE GLEN

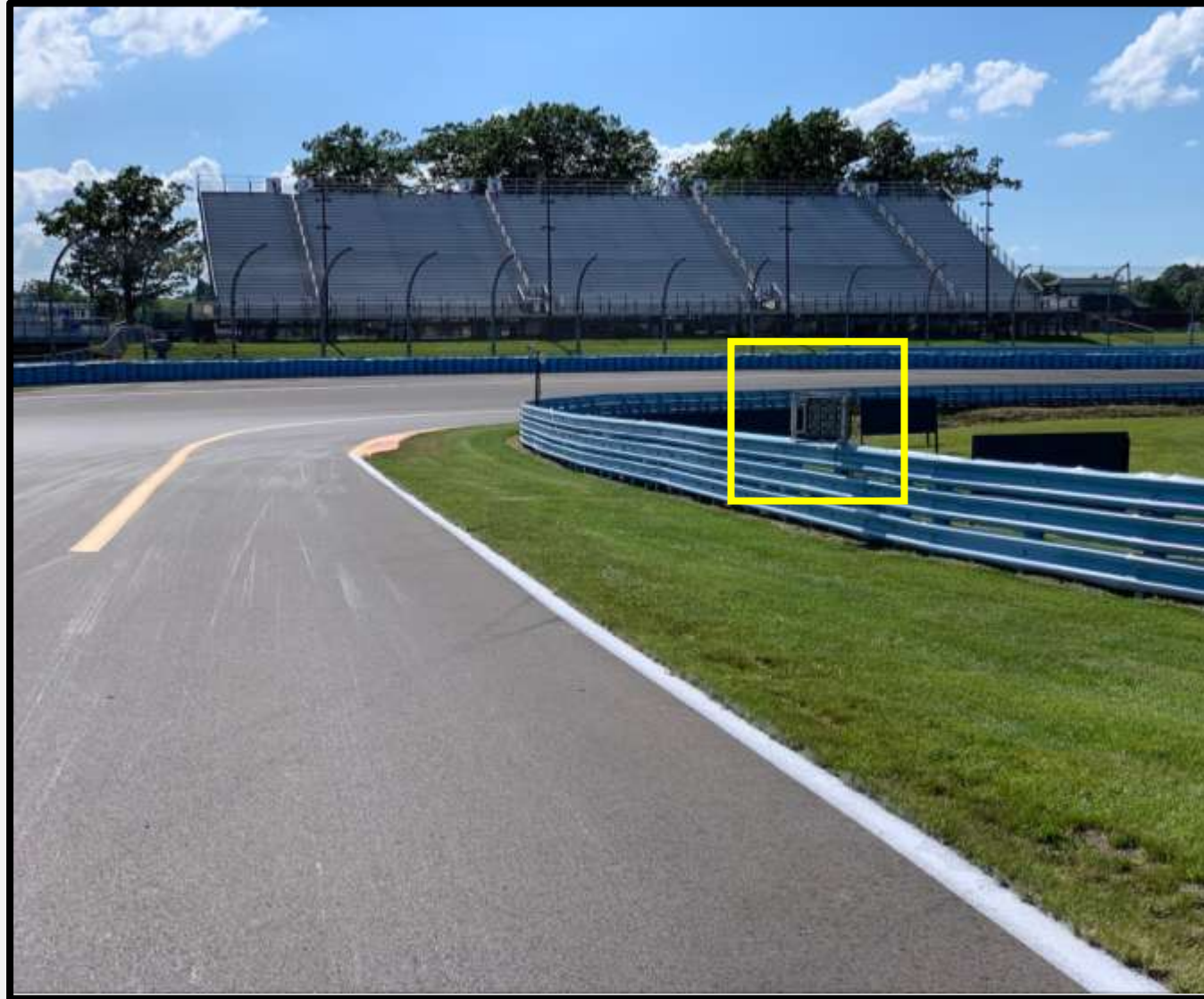


- L** IMSA DELPHI LIGHT LOCATIONS
- ★** SAFETY EQUIPMENT LOCATIONS
- F** FIRE FIGHTING LOCATIONS
- 🚩** FLAG LOCATIONS
- ORANGE OVERLAPS

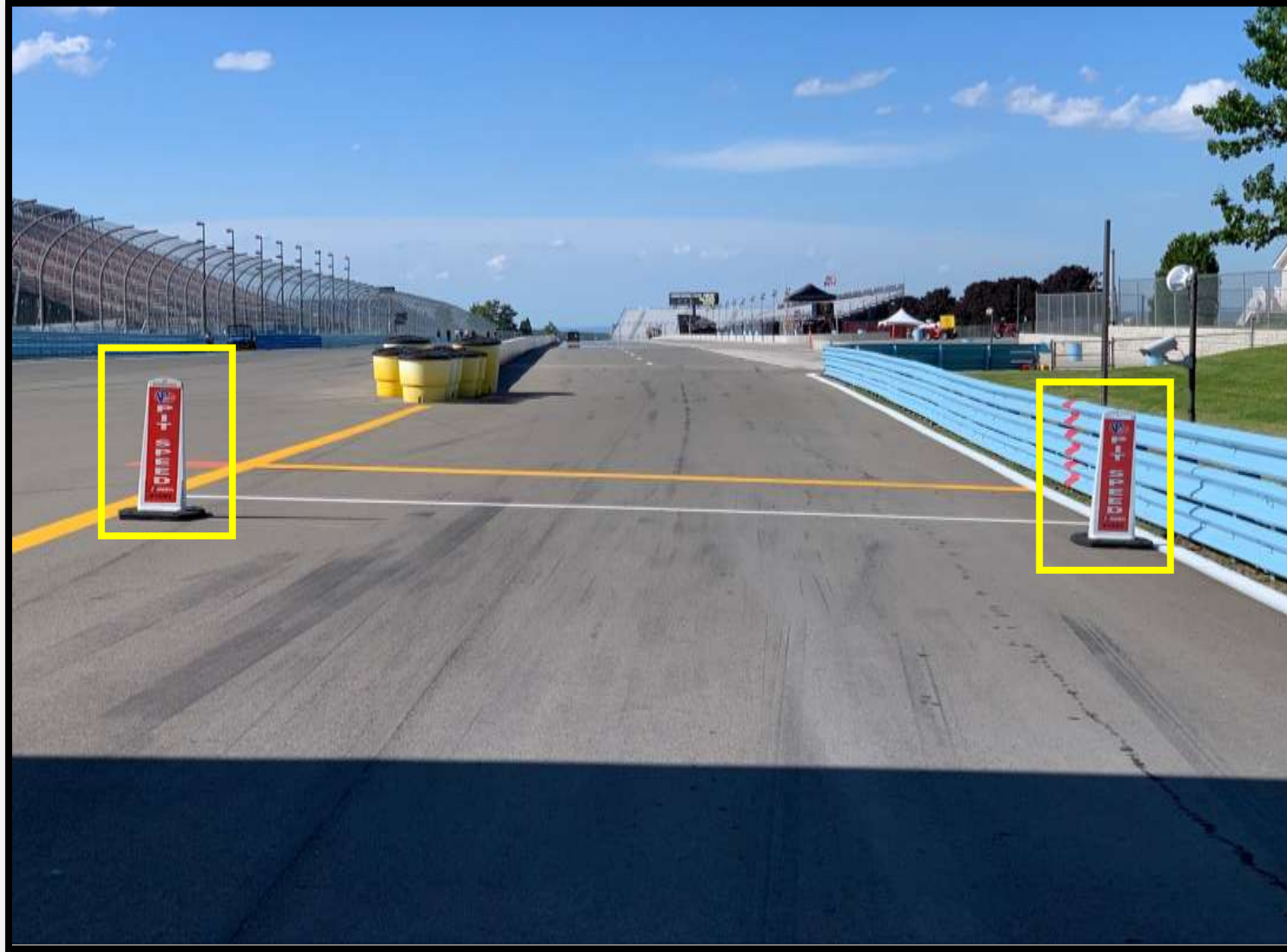
# PIT COMMIT



# PIT CLOSED LIGHT



# PIT LANE SPEED LIMIT



# PIT CLOSED REPEATER LIGHT



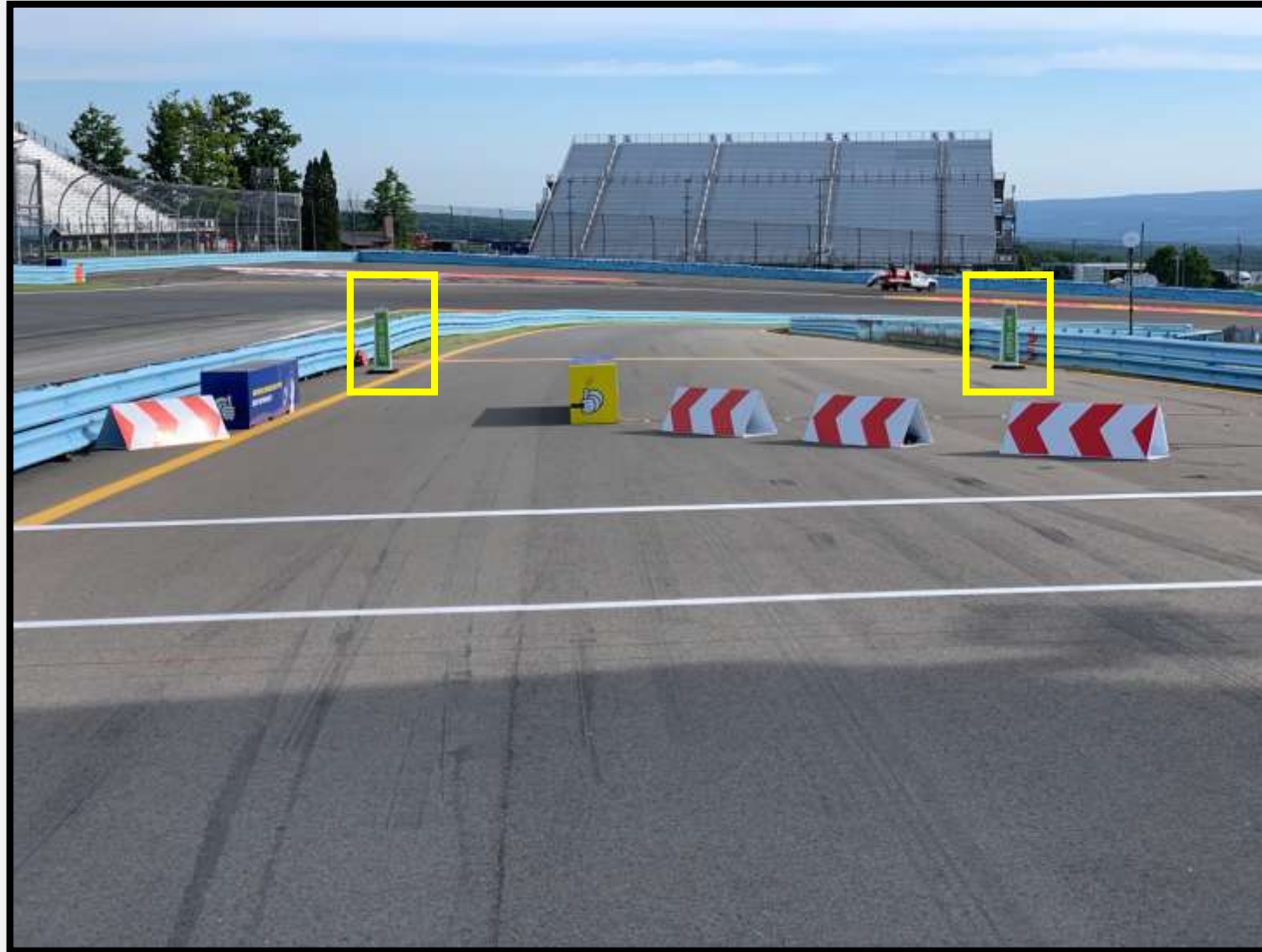
# PIT LANE PROTOCOL



# PENALTY BOX



# PIT LANE SPEED LIMIT



# PIT EXIT MERGE



# ORANGE OVERLAPS



# ORANGE OVERLAPS



# TURN 5 BYPASS



# TRACK LIMITS

- Two (2) wheels must remain on racing surface, including painted curbing
- Laps with violations are invalidated
- Multiple violations result in penalties
  - Violation accumulation pertains to car, not driver
  - Off/On, Drive-Off, Force Off
- Race Control has improved resources to aid in track limits enforcement
- Bus stop straight-through/tire chicane
  - No stop required
  - Safe re-entry responsibility

# TRACK LIMITS



# TRACK LIMITS



# RESTART ZONE



# RACE START

- **Two (2) Formation Laps**
- **Safety Car(s) enter track at Baker gate (T1/2 DR)**
- **Split Start – GS and TCR (Two Safety Cars)**
- **Pack up first time by / Pair up at Turn 8**
- **Stay with Safety Cars**
- **Safety Cars enter Pits**
- **Acceleration point**
  - Polesitters to maintain pace of the Safety Car to acceleration point
- **Column Passing and Lane Changes are prohibited prior to the start line**
- **Official Race Start is second time by the finish line**
- **Jump/False start Reviews**
  - Gaps
  - Timed/Early Acceleration
  - Out of Line
  - Column Passing

# FULL COURSE YELLOW (STANDARD)

- Pits Closed
- Full Course Yellow
- Overall Leader – Safety Car speed
- Safety Car dispatched from Baker Gate (T1/2 DR) to Overall Leader
- Pack Up
- Pass-Around
- Pits Open (GS)
- Pits Open (TCR)
- Final Wave-By
- Class Split (complete when Safety Car lights are extinguished and competitor arrives at Turn 9)
- Restart
- Emergency service Cars must D-T
- Standard FCY not in effect during the First and Last 30 minutes of a Race
- Emergency service fuel Cars must fuel at first opportunity
- Failure to perform emergency service drive-through: Stop plus 10 seconds
- More than emergency service taken: Stop plus 60 seconds

# FULL COURSE YELLOW (SHORT)

- Pits Closed
- Full Course Yellow
- Overall Leader – Safety Car speed
- Safety Car dispatched from Baker Gate (T1/2 DR) to Overall Leader
- Pack Up\*\*\*\*\*
- Pass-Around
- Pits remain closed
- Class Split (complete when competitor arrives at Turn 9)
- Pits Open (all classes) after all Cars pass Pit-In, coming to the restart
- No Final Wave-By
- Restart
  - Speed\*\*\*\*\*
  - Gaps\*\*\*\*\*
- Emergency service Cars must D-T
- Emergency service fuel Cars must fuel at first opportunity
- Failure to perform emergency service drive-through: Stop plus 10 seconds
- More than emergency service taken: Stop plus 60 seconds

# ON TRACK

- **RESTARTS**
- **LOCAL YELLOWS**
- **BLOCKING / DEFENDING INCREASE RESPONSIBILITY**
  - Proactive vs. Reactive
- **CONTACT**
  - Responsibility
  - Class Racing
  - Multi-class incidents
    - Brake Zones \*\*\*\*\*
- **COEXISTENCE**
  - Awareness
  - Coexist

# RACE CONTROL

- **COMMUNICATION**

- Radio Communications
- Race Control Notification System (RCNS)/Instant Messenger
  - Race Control
  - Timing & Scoring
  - Technical Department

- **REVIEW PROCESS**

- Data
- Video
- All incidents are reviewed for the purpose of apportioning individual responsibility that may result in penalties. Race how you expect to be raced and acknowledge that there may be new competitors. Best of luck and make it a great race!

# MISCELLANEOUS REMINDERS

- **Pass-Arounds, Final Wave-Bys and Category/Class Splits are two-phase procedures.**
  - PREPARE
  - COMMENCE
  - Competitors who fail to prepare and/or commence when the commands are communicated from Race Control and subsequently lose positions will not be given positions back.
- **Multi-Class Racing**
  - Performance Differences
    - Downforce
    - Straight-Line Speed
    - Surprises
    - Interactions
    - Remain Predictable
- **Driver “Bandwidth”**



Let Racing Force help you plan for your upcoming racing season with OMP, Bell and Racing Spirit Products!

Racing Force is one of IMSA's longest standing Partners, with more than 15 years as one of IMSA's Proud Partners.

For 2025 Racing Force is offering a **30% discount** on all Racing Force Products to IMSA competitors and teams. This discount can be applied by confirming your participation in an IMSA sanctioned series with the Racing Force Team.

To order Racing Force Products or for more information, please contact:

**Kenji Yrey**

Custom Products & Logistics Coordinator

[Kenji.yrey@racingforce.com](mailto:Kenji.yrey@racingforce.com)

786-479-4722





**RACING OPTICS®**

Looking for windshield tear-offs?

Racing Optics, a Proud Partner of IMSA, is the industry leader in multilayer, laminated tear-offs, and is proud to offer their product and installation services to IMSA teams and competitors.

For those looking to purchase product away from the track, Racing Optics is excited to offer IMSA teams and competitors a special **20% off promo code** for Racing Optics windshield tear-offs on Pro-Tint's [online shop](#).

Use code **"IMSA20"** at checkout to receive your discount.

To schedule an install or for more information, please contact:

**Chris Colton**

Applications Engineer / Sponsorships & Corporate Relations

[C.Colton@racingoptics.com](mailto:C.Colton@racingoptics.com)

980-439-6485





**Preventative Maintenance | Repairs | Evaluations | Upgrades**

**To schedule at-track support, please email:**

**[tracksupport@evolvetransporters.com](mailto:tracksupport@evolvetransporters.com)**



# STAY\*FROSTY<sup>®</sup> PERFORMANCE COOLANTS



Stay Frosty<sup>®</sup> Race Ready is a proprietary VP Racing Fuels coolant formulated for high-compression, high-heat racing engines. It contains a specialized blend of heat transfer agents that drastically improve coolant's ability to transfer heat away from high temperature cylinder heads. Temperatures of engines are reduced by up to 30°F compared to conventional glycol-based coolant.

*100% Water-Based Glycol-Free Formula*

*Reduces Engine Temps Up to 30°F*

*Blended with Chemically Stable Reverse Osmosis Water*

*Ready-To-Use – Just Pour In (Also Available in Clear)*



OFFICIAL PERFORMANCE COOLANT

**Lower Temps.  
More Power.**



# ***LP BUILDING SOLUTIONS 120 AT THE GLEN***

**SATURDAY, JUNE 27TH AT 1:00PM ET**

peacock   YouTube