

MUSTANG CHALLENGE NORTH AMERICA

TEAM MANAGER MEETING: MID-OHIO



SERIES CONTACTS



Chris Ward Global Customer Racing Manager (248) 252-8524
Dave Born Motorsports Program Supervisor (313) 805-8868

Chelsey Vickery	Race Director	(812) 431-7716
Duane Sampson	Director, Single Make	(386) 285-7021
Austin Farr	Coordinator, Single Make	(386) 293-1702
Cory Posocco	Logistics & Event Ops	(386) 566-8313
Holly Langer	Paddock Set-Up	(386) 871-0241
Paul Walter	Sporting	(614) 598-6783
Steven Sewell	Technical	(860) 671-1401
Johnny Knotts	Pit Lane Supervisor	(813) 763-4669
Carol Mueller	Manager, Member Services	(386) 262-8932
David Pees	Timing & Scoring	(386) 308-8866
Ryan McLean	Medical Liaison	(386) 285-6913
Roy Spielmann	Track Services	(414) 702-0905
Robert Bosworth	Safety & Security	(704) 728-8087

IMSA RESOURCES

IMSA COMPETITOR LANDING PAGE:

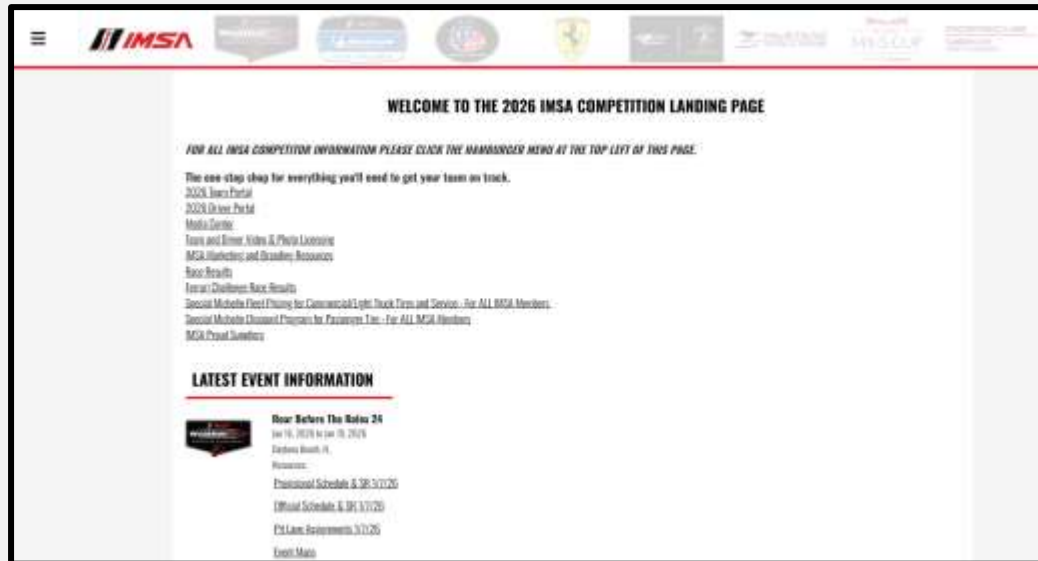
<https://www.imsa.com/competitors/>

- Team Portal
- Event Information
- Rules & Regulations
- Marketing & Branding Page
- All Event Schedules published

IMSA NOTICE BOARD:

<http://results.imsa.com/>

- Driver & TM Briefings
- Entry Lists
- Minute by Minute
- Timing Results
- Penalties



TO IMSA REGISTRATION

Directions

1. Take Steam Corners Rd to Mid-Ohio Gate 3
2. Proceed to IMSA Registration (red shaded area)

Notes

- Track Address: 7721 Steam Corners Rd, Lexington, OH 44904
- Refer to Official Schedule / SR for Registration hours of operation



EVENT INFORMATION

PARKING

- IMSA annual hangtags accepted for infield parking
- From Gates 1, 2, and 3, competitor parking is located on the right in the Official Crew Parking (see map)
- For hard card access, use Gate 3

TO HANGTAG PARKING

Directions

1. Take Steam Corners Rd to Mid-Ohio Gate 3
2. Proceed to IMSA Hangtag Parking (blue shaded area)

Notes

- Track Address: 7721 Steam Corners Rd, Lexington, OH 44904
- IMSA annual parking passes (hangtags) valid at this event



PADDOCK/GOLF CART PASSES - IMSA

Annual Paddock and Pit Lane Golf Cart / Tugger passes for 2026.

- **MCNA** Teams are allotted **one (1)** annual Paddock pass per entered Car.
- **MCNA** Teams are allotted **one (1)** annual Pit & Paddock pass for tugger pit lane access per entered Car.
- **A Team must return a previously issued Annual pass to obtain a replacement.**
 - Available in the WeatherTech Tech Trailer.
- IMSA ADA Golf Cart passes - permits access during restricted Track Walks.
 - Available from IMSA Registration as appropriate with proof of ADA.
- **Improper use and/or falsification of any credential, parking pass and/or access pass is prohibited. Penalty: minimum \$5,000 fine and suspension or revocation of Membership and/or any other penalty available per Art. 57.**

Paddock/Golf Cart Passes – **Racetrack**

- No track passes required



PADDOCK

**PROHIBITED
ANY ONE, TWO OR
THREE-WHEEL FORM OF
TRANSPORTATION**

**ONLY PROPERLY
PERMITTED VEHICLES ACCEPTED
EXCEPTIONS FOR VESTED MEDIA
AND ADA TRANSPORT**

Motorcycles, drones, bicycles, skateboards, rollerblades and other non-motorized transportation, as well as motor scooters of one, two or three-wheels and/or designed to transport one or two persons, are prohibited in the garage, pit and/or Paddock areas except authorized power-driven mobility devices (ADA requirements - Americans with Disabilities Act), and accredited and vested media personnel.

Pit vehicles must only be operated by an IMSA credential holder. Motorized carts and similar 3- or 4-wheeled conveyances must not be driven into pit lane except pit equipment approved for a Series or as specified in the SR.

Such use in the Paddock must be for legitimate purposes only.

Excessive speed and/or unsafe operation is prohibited. Participants must abide by state laws and Promoter restrictions regarding licensing, maximum speed, helmet requirement and use.

Such conveyances may be prohibited at certain Events or in certain areas of each facility by local ordinance or Promoter limitation.

IMSA SEVERE WEATHER PLAN

- IMSA uses the DTN Weather Service with Lightning Detection.
- Notifications are sent (as in past years):
 - Within 30 miles of the track – Advisory message sent for informational purposes.
 - Within 20 miles of the track – Cautionary message sent to increase awareness and trigger protective actions for personnel and equipment.
 - Within 8 miles of the track – Full-Stop message sent for personnel to stop all activities and seek shelter due to potentially dangerous conditions.
 - IMSA continues to send periodic updates through the messaging service while on-track activities are under a “full-stop”.
 - When severe weather has moved out of the area, an “all-clear” message is transmitted.

IMSA uses an internal messaging service. Text messages are sent to all credentialed attendees for an Event. There is no need to provide a recipient list.

ACCESSING EMERGENCY SERVICES

For all emergency services (EMS, Law Enforcement or Fire)

- Call 911. Give accurate location of incident to the dispatcher. Mid-Ohio Security has been given our paddock maps and is working with local 911 dispatch center to assist in responders coming to exact locations provided.
- As soon as possible after calling 911, please notify Paul Alterio (419) 566-8044. He will be able to send track assigned units to the incident to augment local 911 Response System.

For Non-Emergency Medical Needs:

- If during In-Field Care Center Hours – transport patient to location for treatment
- If after In-Field Care Center Hours – follow above procedure to request an emergency response unit.

PADDOCK OPERATIONS

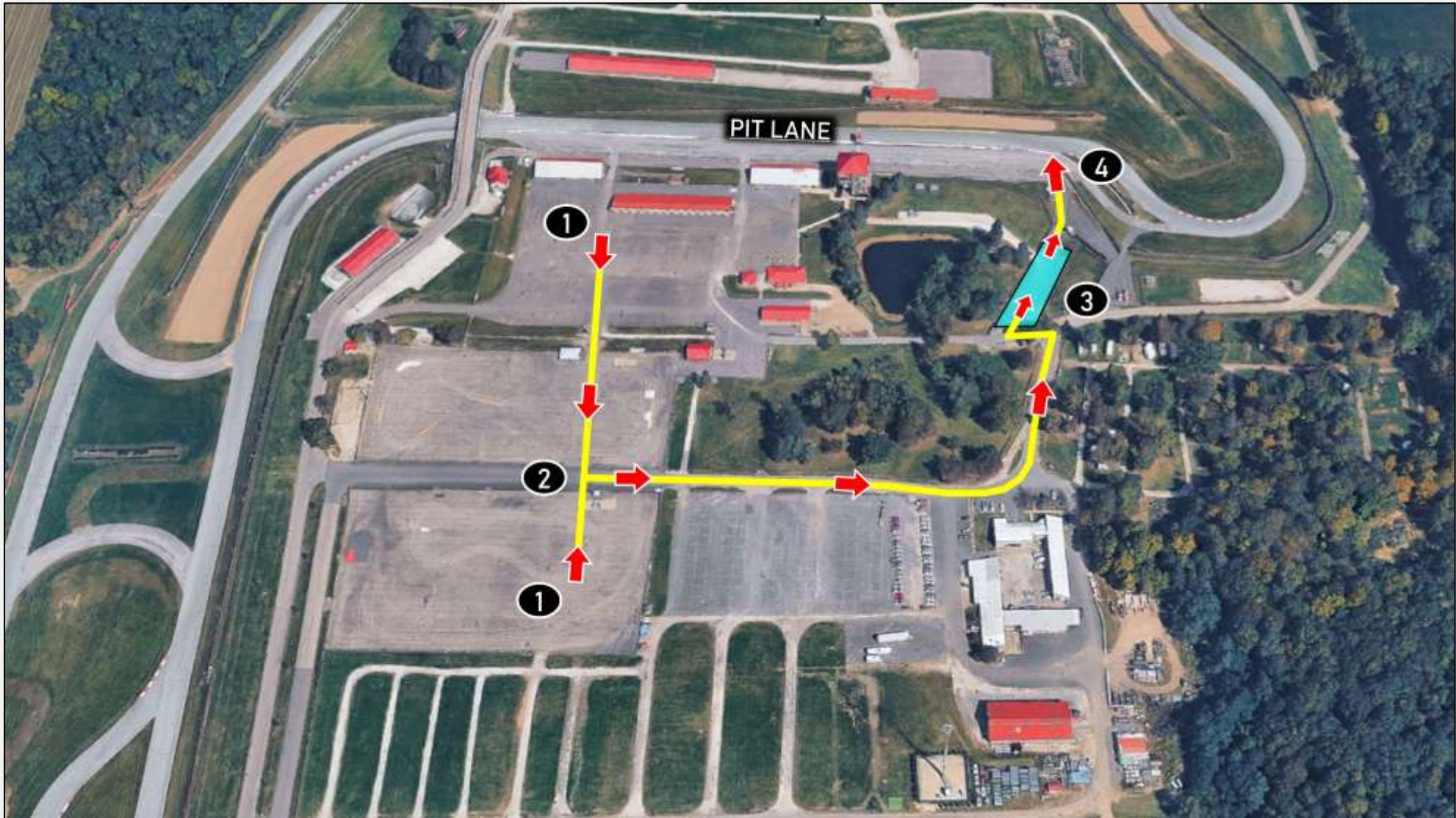
- **20.3.2.** Driving of and/or riding on any vehicles (including Cars, golf carts, and pit vehicles) in the Paddock or facility deemed dangerous, erratic, of inappropriately excessive speed for the circumstances or established limits and/or in violation of the RULES is prohibited and subject to penalty.
 - A. Cars must only be driven/operated by an IMSA credentialed Driver or Crew Member. Passengers and/or unsecured exterior materials prohibited.



TO FALSE GRID & PIT LANE

Directions

1. Exit respective Paddock to False Grid Access Road
2. Proceed along False Grid Access Road
3. Enter False Grid area (blue shaded area)
4. Exit False Grid to Pit Lane as directed by IMSA Officials



IMSA TRACK SERVICES

IMSA CHASE VEHICLES

- Chase 1 | Porsche Cayenne GTS
- Chase 2 | Porsche Cayenne GTS
- Chase 3 | Ford F-150
- Chase 4 | Ford F-150

ON-TRACK ASSISTANCE

- Communication with Track Services Medic
- Neutral and power shut off
- Follow direction of on-scene Track Services personnel
- Maintain a safe speed and distance when passing on-track incidents with Track Services team members present

Contact: Roy Spielmann 414.702.0905



IMSA AMR Porsche Rapid Response Vehicles PORSCHE CAYENNE GTS



IMSA AMR Ford Raptor Recovery Trucks FORD F-150 RAPTOR



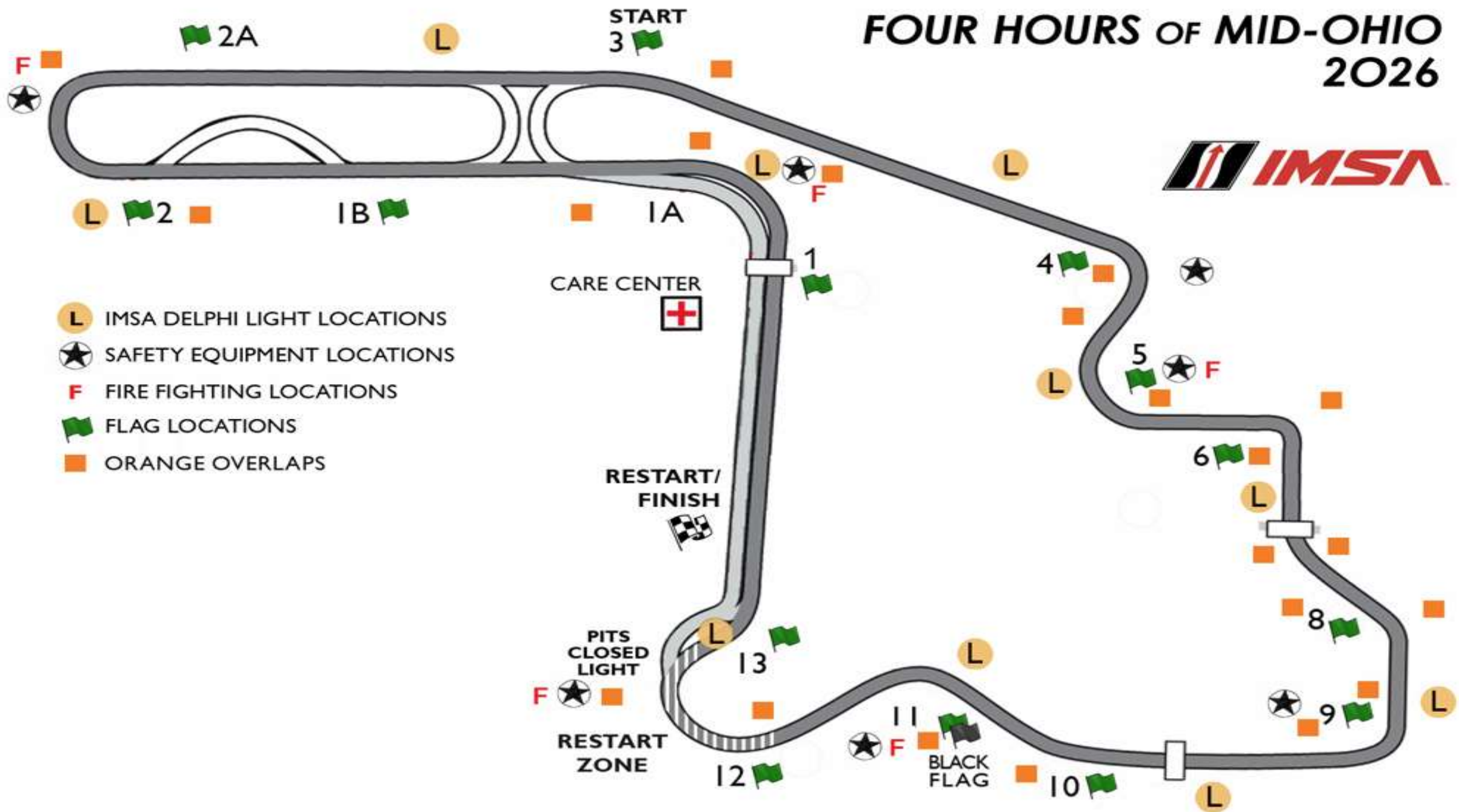
CARE CENTER LOCATION

Notes

- Care Center is located at Pit Out (yellow shaded area)
- Refer to Official Schedule / SR for Care Center hours of operation



O'REILLY AUTO PARTS FOUR HOURS OF MID-OHIO 2026

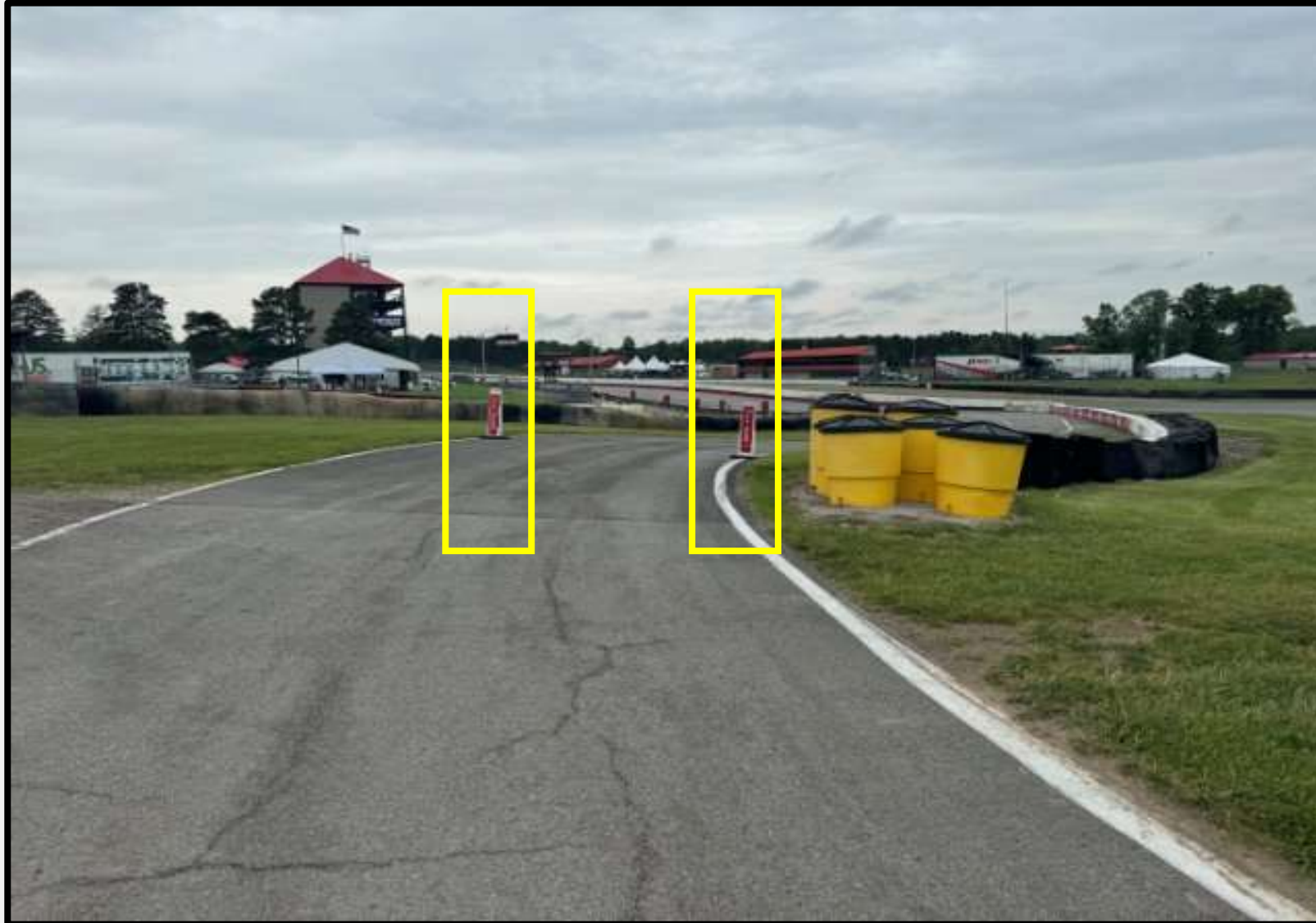


- IMSA DELPHI LIGHT LOCATIONS
- SAFETY EQUIPMENT LOCATIONS
- FIRE FIGHTING LOCATIONS
- FLAG LOCATIONS
- ORANGE OVERLAPS

PIT ENTRY



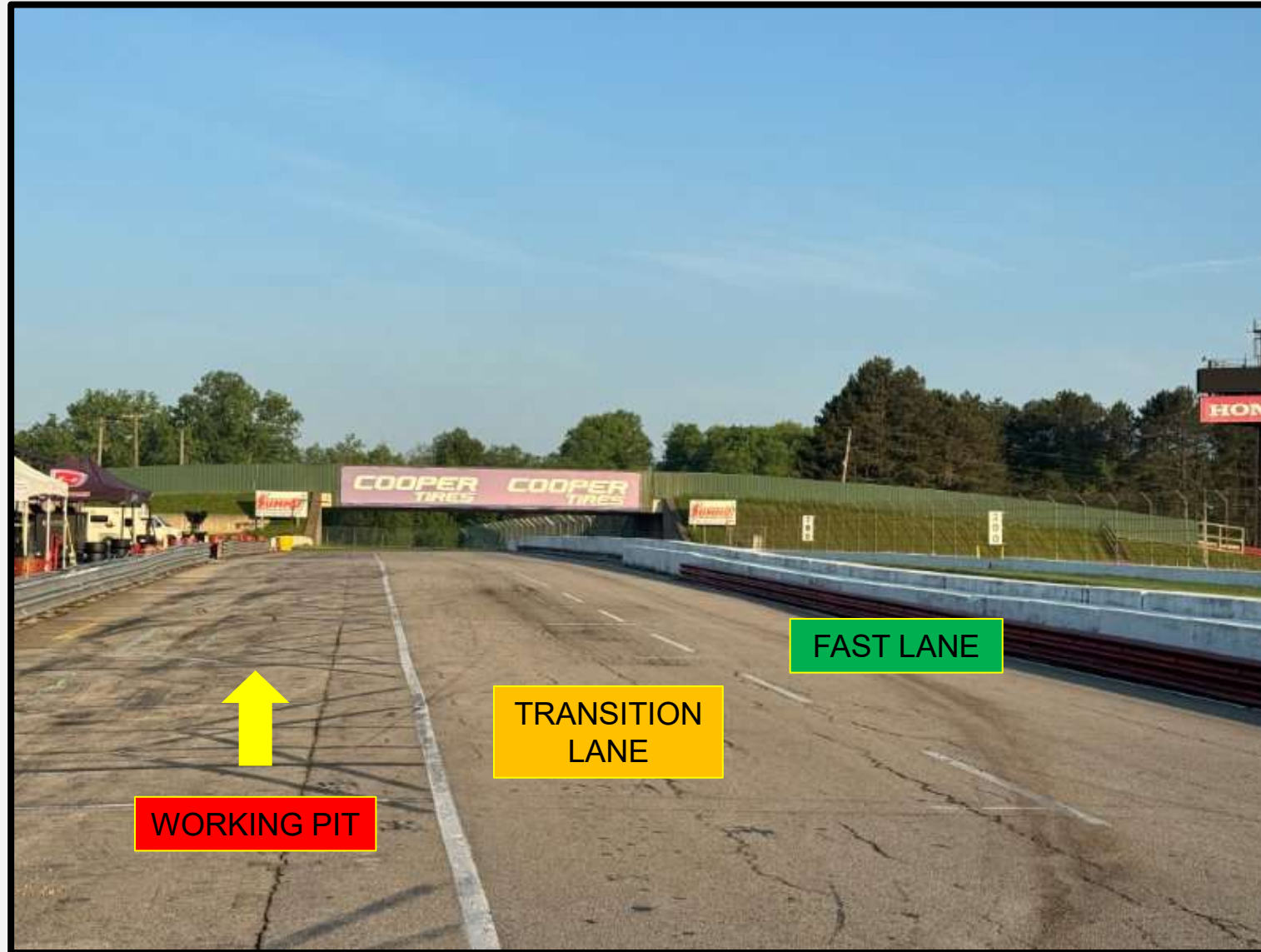
PIT LANE SPEED LIMIT BEGINS



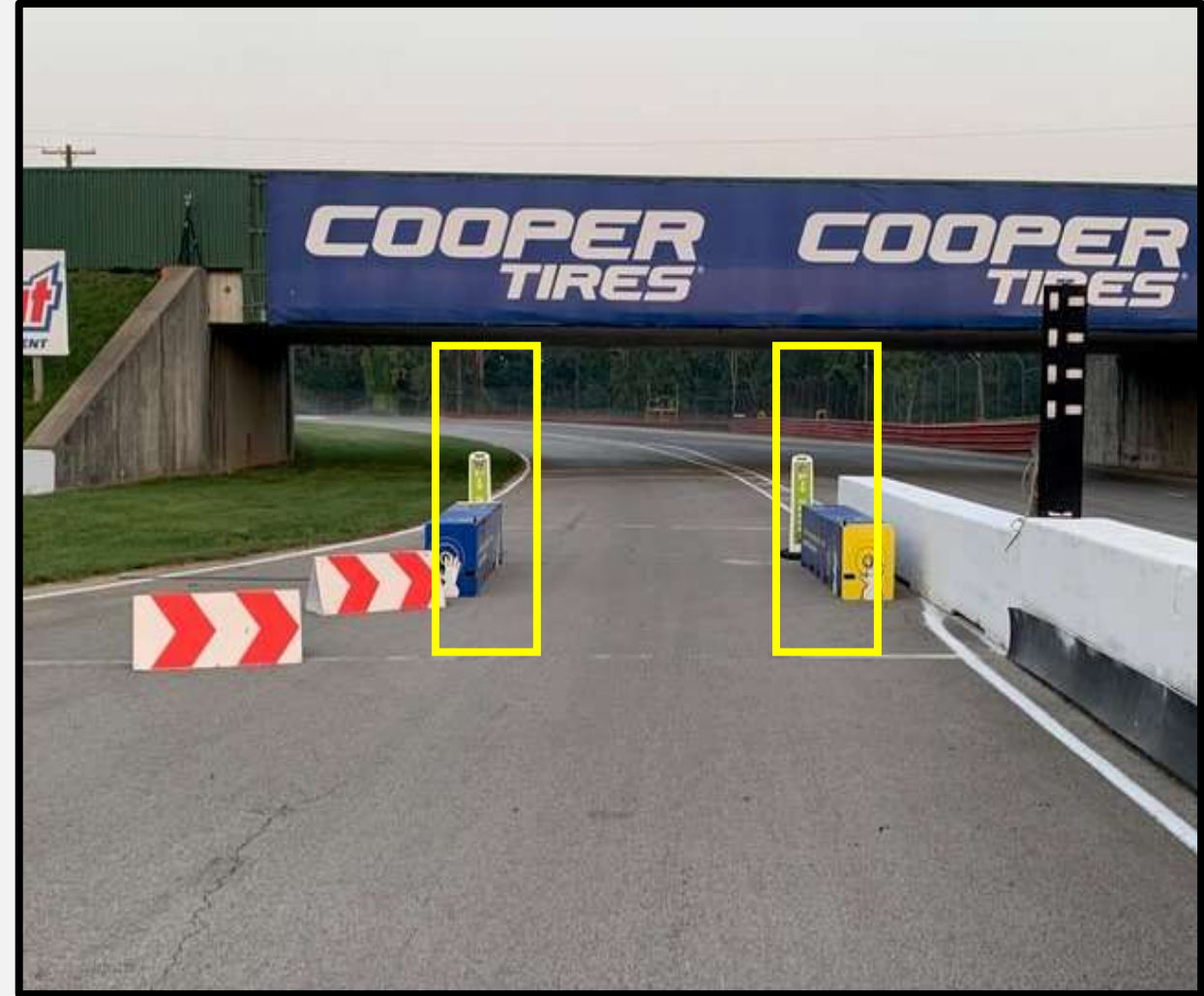
PIT LANE PROTOCOL



PIT LANE PROTOCOL



PIT EXIT / PENALTY BOX / PIT SPEED ENDS



PIT EXIT MERGE

Cars exiting the Pit Lane must remain FOUR wheels to the left of the merge line and Turn 1 apex curb.

Cars on track must respect the speed difference of those in the Pit Exit merge lane.

Track limits will be enforced.



ORANGE OVERLAPS T2

Overlaps are marked throughout the Circuit and are indicated on the Official Track Map.

Competitors with disabled Cars are requested to exit at these locations when unable to continue to the pits.



ORANGE OVERLAPS





ADDITIONAL IMSA ITEMS



PROMOTIONAL FAN ENGAGEMENT OPPORTUNITIES

Watkins Glen International

Thursday, June 25 | IMSA Preview Party at Seneca Lodge



TO LEARN MORE CONTACT

Emily Nash | enash@imsa.com , Hailey Harbrecht | hharbrecht@imsa.com

ADDITIONAL FORD ITEMS



AUTOGRAPH SESSION

AUTOGRAPH SESSION FOR MID-OHIO

- Saturday, June 6
- 11:30 am – 12:00 pm
- Located at Series Transporter

MUSTANG DARK HORSE APP

OFFICIAL APP FOR FORD ONE-MAKE RACING

- Download the app on Apple or Android app store, search under "Dark Horse R"
 - Once downloaded, follow the in-app instructions to be granted access
 - After registering, a pin will be sent to your registered email for verification
- Once granted access, you can alternate through championships using the Settings Gear ⚙ after clicking on your profile picture on the bottom right of the app
- Also available on the web: <https://mustangdarkhorse.app/>
- The app is used to keep competitors up to date with schedule changes, at-track announcements, and other important updates from the FPRS and IMSA Management Teams
- App requires a WiFi/Internet connection



THANK YOU

DRIVER MEETING SATURDAY 12:30pm



MUSTANG CHALLENGE NORTH AMERICA

DRIVER MEETING: MID-OHIO



PRE RACE/POST RACE

Refer to MXM

RACE

One+ (1+) FORMATION Lap

Stay with Safety Car until Safety Car enters pits.

Pack up after Start/Finish / Pair up after exiting T1.

Acceleration Point (Polesitter)

Jump/False start Reviews

- Gaps
- Timed/Early Acceleration
- Out of Line
- Column Passing – Passing cars in your column is NOT allowed until across the S/F line

Official Race Clock starts **FIRST** time by Finish. Initial start is on back straight, after completion of 1st Formation Lap.



Official Race Start Back Straight

START EXPECTATION



FULL COURSE YELLOW

Failure to maintain proper Safety Car speed and correct gaps between Cars, or otherwise initiate manipulative action to gap Cars, is prohibited and subject to penalty.

Race Control radio, in-car lights, double yellow flags displayed

Response vehicles may begin to move as soon as FCY is announced

Leader to Safety Car speed, all Cars pack up – respect the area of incident/Track Services personnel

- RC instructions regarding track condition over radio
- SC dispatched from Pit Exit

RESTART

- Maintain SC speed, let SC get away, *no more tire scrubbing after T10*

RESTART ACCELERATION ZONE – Entry of T12

- Passing on display of green flag

RESTART ACCELERATION ZONE

T12 Restart Zone

Passing is permitted when green Flag is displayed.

Dive bombing prohibited.



ON TRACK CONDUCT

LOCAL YELLOW FLAGS (SEE ARTICLE 27)

- No passing from point perpendicular to yellow flag to the point perpendicular to the following green flag

BLOCKING (SEE ARTICLE 30)

- Movement in reaction to the trailing Car
- Defending increases responsibility

CONTACT/INCIDENT RESPONSIBILITY (SEE ARTICLE 30)

- Review with Driver Advisor in RC
- Incidents under review announced by Race Control

COEXISTENCE

- Maintaining awareness lessens margin for error, regardless of responsibility

COMMUNICATE REVIEW REQUESTS TO PIT OFFICIALS

- Must provide time of day, location, and description of action to be reviewed

POST LAGUNA / MID-OHIO NOTES

Laguna- Expectations not met

- Multiple late inside maneuvers resulting in contact
- Lack of patience, awareness, respect for fellow competitors
- Plan, execute, complete passes
- Probation / Suspension

Mid-Ohio

- Turns 4-5 Close quarters racing
- Turn 12 Close quarters racing / Awareness on restarts

WET TIRE CHANGE PROCESS

If the Race is not started as declared “Wet,” and conditions later mandate wet tires, the following process is used:

- Race Control announces FCY and deploys Safety Car to collect the field.
- The running order of the Cars is taken at S/F for all Cars.
- After all Cars have crossed S/F but before arriving at the pit entry, Race Control declares Red Flag.
- The Race Director declares the Race ‘Wet’.
- The Safety Car leads the field into the pit lane.
- Cars are directed to their pit boxes for the exclusive purpose of changing to wet tires, no other work.
- Teams are given Five (5) minutes to change tires.
- Cars unable to continue must inform their Pit Official.
- The Pit Officials will call the order of the Cars as taken at S/F to release from their pit box one at a time and proceed on track behind the Safety Car.
- Changes to the running order in case of any misfortune after crossing S/F are restored for the restart.
- A ‘confirmation lap’ is performed to check the order of the Cars and to direct any necessary changes.
- The Race is resumed from FCY as normal.

THANK YOU

