



TEAM MANAGER BRIEFING



VP RACING SPORTSCAR CHALLENGE AT MID-OHIO

SAT. JUN. 6 AT 12:40PM ET | SUN. JUN. 7 AT 7:55AM ET

peacock  YouTube 

SERIES CONTACTS

Randy Buck	Race Director	(415) 298-7018
Brian Wilson	Series Manager	(386) 281-9494
Carol Mueller	Member Services	(386) 262-8932
Marisa Ross	Series Coordinator	(386) 293-1474
Cory Posocco	Logistics & Event Ops	(386) 566-8313
David Pees	Timing & Scoring	(386) 308-8866
Scott Ellison	Technical	(734) 621-9130
Holly Langer	Paddock Layout	(386) 871-0241
Johnny Knotts	Pit Lane Supervisor	(813) 763-4669
Paul Walter	Sporting Regulations	(614) 598-6783
Robert Bosworth	Security & HV Safety	(704) 728-8087
Roy Spielmann	Track Services	(414) 702-0905
Ryan McLean	Medical Liaison	(386) 285-6913

[2026 IMSA Operational Contact List](#)

ACCESSING EMERGENCY SERVICES

For all emergency services (EMS, Law Enforcement or Fire)

- Call 911. Give accurate location of incident to the dispatcher. Mid-Ohio Security has been given our paddock maps and is working with local 911 dispatch center to assist in responders coming to exact locations provided.
- As soon as possible after calling 911, please notify Paul Alterio (419) 566-8044. He will be able to send track assigned units to the incident to augment local 911 Response System.

For Non-Emergency Medical Needs:

- If during In-Field Care Center Hours – transport patient to location for treatment
- If after In-Field Care Center Hours – follow above procedure to request an emergency response unit.



PADDOCK

**PROHIBITED
ANY ONE, TWO OR
THREE-WHEEL FORM OF
TRANSPORTATION**

**ONLY PROPERLY
PERMITTED VEHICLES ACCEPTED
EXCEPTIONS FOR VESTED MEDIA
AND ADA TRANSPORT**

Motorcycles, drones, bicycles, skateboards, rollerblades and other non-motorized transportation, as well as motor scooters of one, two or three-wheels and/or designed to transport one or two persons, are prohibited in the garage, pit and/or Paddock areas except authorized power-driven mobility devices (ADA requirements - Americans with Disabilities Act), and accredited and vested media personnel.

Pit vehicles must only be operated by an IMSA credential holder. Motorized carts and similar 3- or 4-wheeled conveyances must not be driven into pit lane except pit equipment approved for a Series or as specified in the SR.

Such use in the Paddock must be for legitimate purposes only.

Excessive speed and/or unsafe operation is prohibited. Participants must abide by state laws and Promoter restrictions regarding licensing, maximum speed, helmet requirement and use.

Such conveyances may be prohibited at certain Events or in certain areas of each facility by local ordinance or Promoter limitation.

IMSA TRACK SERVICES

IMSA CHASE VEHICLES

- Chase 1 | Porsche Cayenne GTS
- Chase 2 | Porsche Cayenne GTS
- Chase 3 | Ford F-150
- Chase 4 | Ford F-150

ON-TRACK ASSISTANCE

- Communication with Track Services Medic
- Neutral and power shut off
- Follow direction of on-scene Track Services personnel
- Maintain a safe speed and distance when passing on-track incidents with Track Services team members present

Contact: Roy Spielmann 414.702.0905



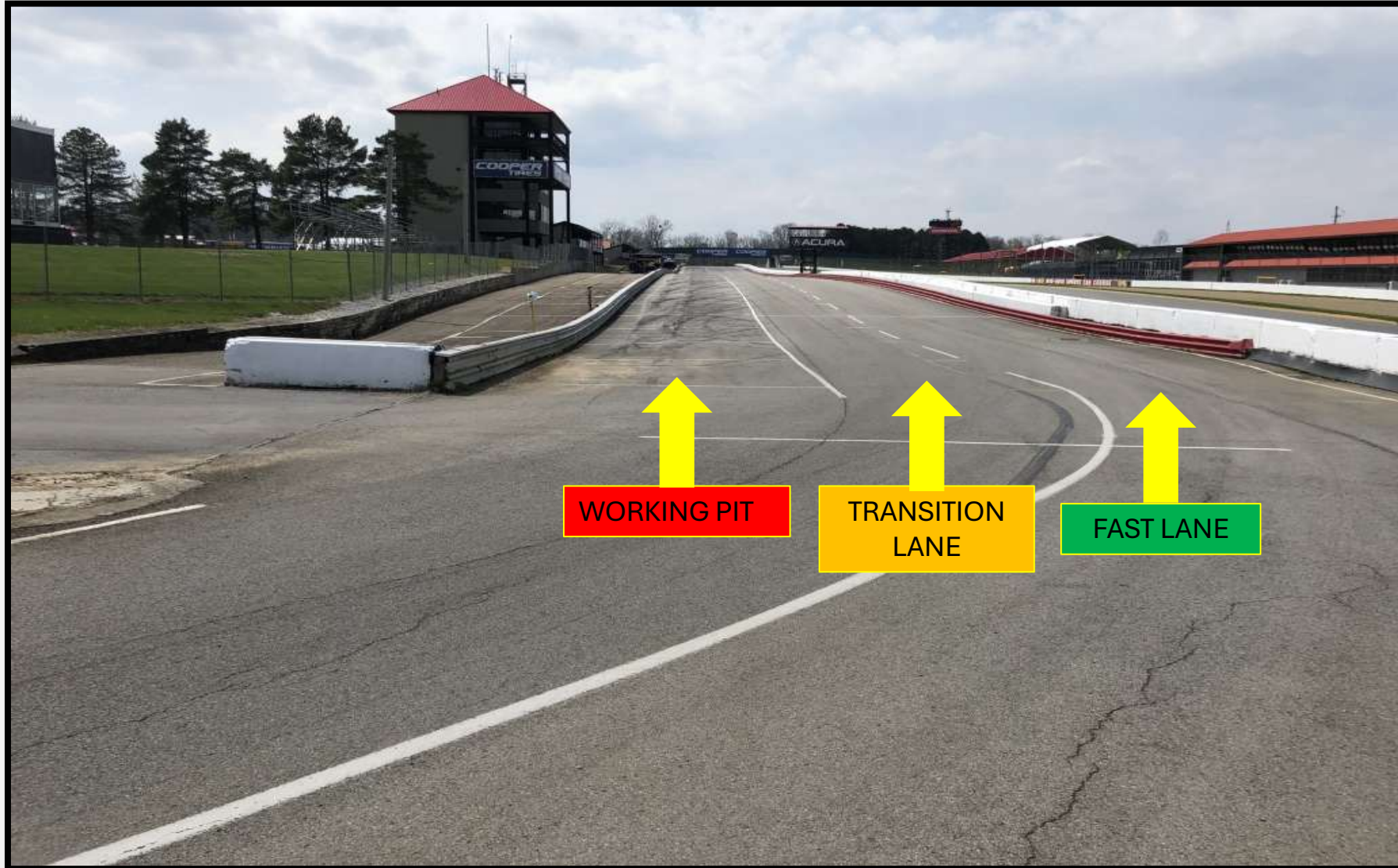
IMSA AMR Porsche Rapid Response Vehicles PORSCHE CAYENNE GTS



IMSA AMR Ford Raptor Recovery Trucks

FORD F-150 RAPTOR

PIT LANE PROTOCOL



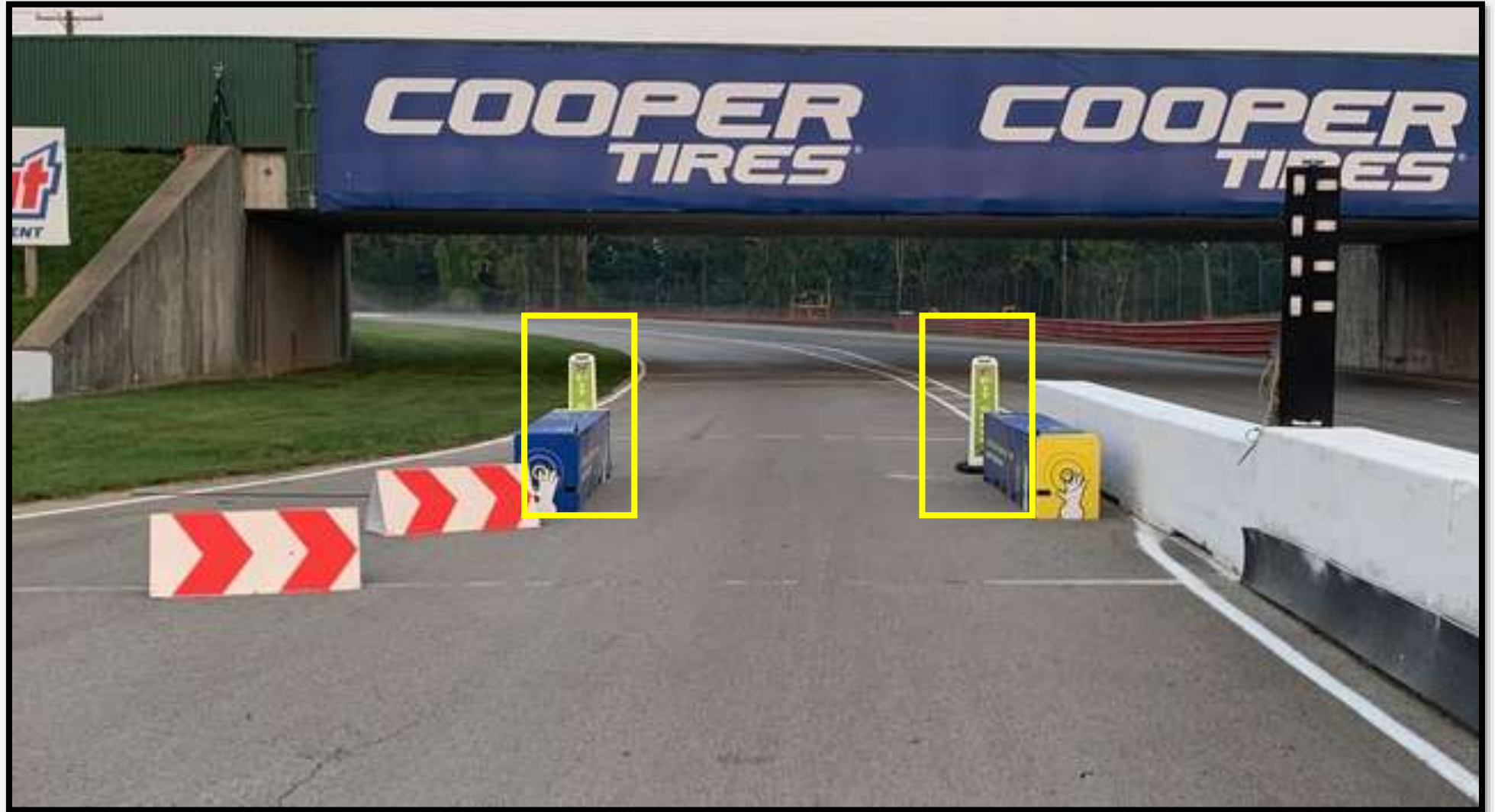
PIT EXIT / PENALTY BOX

- Penalty Box located Driver's left at Pit Exit.



PIT LANE SPEED ENDS

- Pit Lane Speed Limit ends at Green pylons.



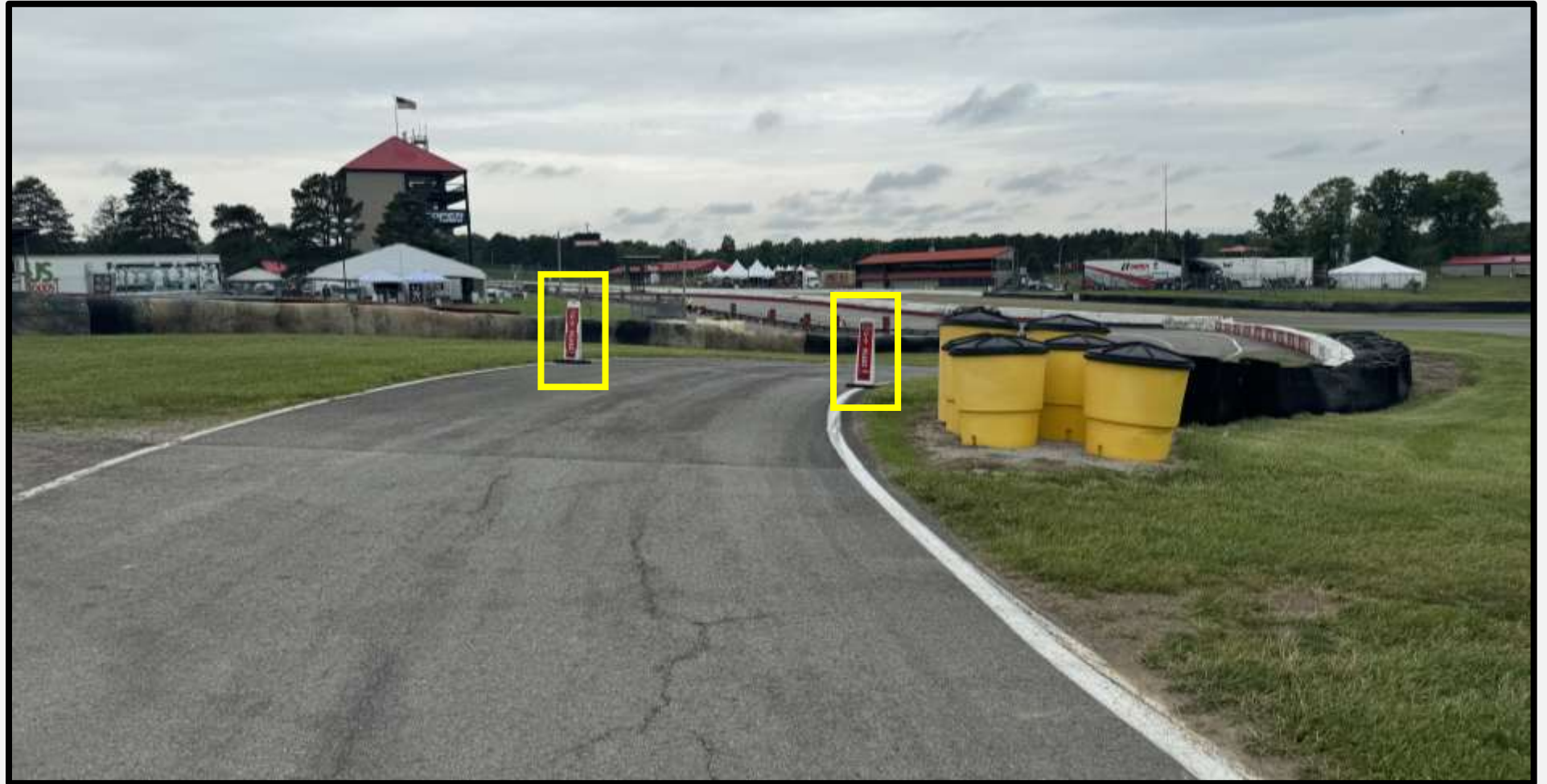
PIT EXIT

- Cars exiting the Pit Lane must remain FOUR wheels to the left of the merge line and Turn 1 apex curb.
- Cars on track must respect the speed difference of those in the Pit Exit merge lane.
- Track limits enforced



PIT LANE SPEED LIMIT

- Pit Lane Speed Limit begins at Red pylons.



ORANGE OVERLAPS

- Overlaps are marked throughout the circuit and are indicated on the Official Track Map.
- Competitors with disabled Cars are requested to exit at these locations when unable to continue to the pits.



ORANGE OVERLAPS

- Overlaps are marked throughout the circuit and are indicated on the Official Track Map.
- Competitors with disabled Cars are requested to exit at these locations when unable to continue to the pits.





Let Racing Force help you plan for your upcoming racing season with OMP, Bell and Racing Spirit Products!

Racing Force is one of IMSA's longest standing Partners, with more than 15 years as one of IMSA's Proud Partners.

For 2025 Racing Force is offering a **30% discount** on all Racing Force Products to IMSA competitors and teams. This discount can be applied by confirming your participation in an IMSA sanctioned series with the Racing Force Team.

To order Racing Force Products or for more information, please contact:

Kenji Yrey

Custom Products & Logistics Coordinator

Kenji.yrey@racingforce.com

786-479-4722





RACING OPTICS®

Looking for windshield tear-offs?

Racing Optics, a Proud Partner of IMSA, is the industry leader in multilayer, laminated tear-offs, and is proud to offer their product and installation services to IMSA teams and competitors.

For those looking to purchase product away from the track, Racing Optics is excited to offer IMSA teams and competitors a special **20% off promo code** for Racing Optics windshield tear-offs on Pro-Tint's [online shop](#).

Use code **"IMSA20"** at checkout to receive your discount.

To schedule an install or for more information, please contact:

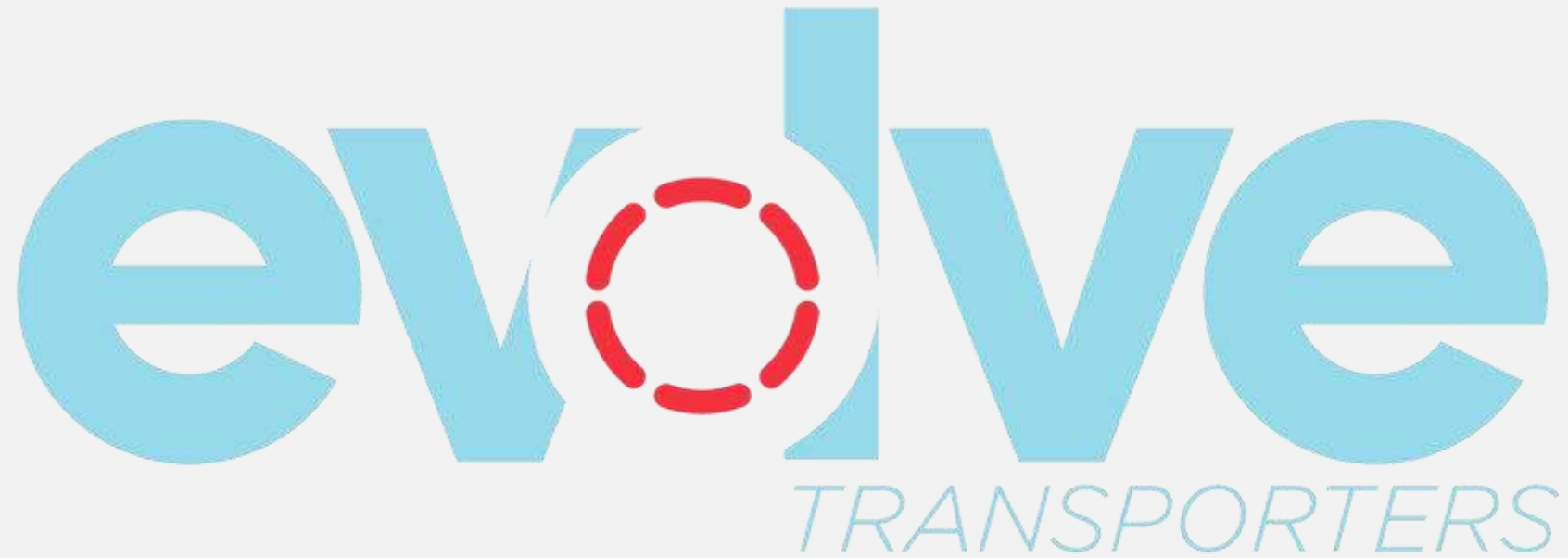
Chris Colton

Applications Engineer / Sponsorships & Corporate Relations

C.Colton@racingoptics.com

980-439-6485





Preventative Maintenance | Repairs | Evaluations | Upgrades

To schedule at-track support, please email:

tracksupport@evolvetransporters.com



STAY*FROSTY[®]

PERFORMANCE COOLANTS



Stay Frosty[®] Race Ready is a proprietary VP Racing Fuels coolant formulated for high-compression, high-heat racing engines. It contains a specialized blend of heat transfer agents that drastically improve coolant's ability to transfer heat away from high temperature cylinder heads. Temperatures of engines are reduced by up to 30°F compared to conventional glycol-based coolant.

100% Water-Based Glycol-Free Formula

Reduces Engine Temps Up to 30°F

Blended with Chemically Stable Reverse Osmosis Water

Ready-To-Use – Just Pour In (Also Available in Clear)



OFFICIAL PERFORMANCE COOLANT

***Lower Temps.
More Power.***

THANK YOU



VP RACING CHALLENGE

DRIVER & TEAM MANAGER BRIEFING



WET TIRE CHANGE PROCESS

If the Race is not started as declared “Wet,” and conditions later mandate wet tires, the following process is used:

- Race Control announces FCY and deploys Safety Car to collect the field.
- The running order of the Cars is taken at S/F for all Cars.
- After all Cars have crossed S/F but before arriving at the pit entry, Race Control declares Red Flag.
- The Race Director declares the Race ‘Wet’.
- The Safety Car leads the field into the pit lane.
- Cars are directed to their pit boxes for the exclusive purpose of changing to wet tires, no other work.
- Teams are given Five (5) minutes to change tires.
- Cars unable to continue must inform their Pit Official.
- The Pit Officials will call the order of the Cars as taken at S/F to release from their pit box one at a time and proceed on track behind the Safety Car.
- Changes to the running order in case of any misfortune after crossing S/F are restored for the restart.
- A ‘confirmation lap’ is performed to check the order of the Cars and to direct any necessary changes.
- The Race is resumed from FCY as normal.

PRE-RACE / POST-RACE

Refer to official schedule and MXM for final times and instructions

RACE

One “plus” (1+) FORMATION Lap

Stay with Safety Car until Safety Car enters pits.
Pole Sitter maintains Safety Car Speed.

Pack up after Start/Finish / Pair up after exiting T1.

Acceleration Point (Polesitter)

Jump/False start Reviews

- Gaps
- Timed/Early Acceleration
- Out of Line
- Column Passing – Passing Cars in your column is prohibited until across the start line

Official Race Clock starts **FIRST** time by Finish.
Initial start is on back straight, after completion of 1st Formation Lap.

Gap between P3 group and GT group remains the same as previous Events



FULL COURSE YELLOW

Failure to maintain proper Safety Car speed and correct gaps between Cars, or otherwise initiate manipulative action to gap Cars, is prohibited and subject to penalty.

Race Control radio, in-car lights, trackside lights, double yellow flags displayed

Response vehicles may begin to move as soon as FCY is announced

Leader to Safety Car speed, all Cars pack up – respect the area of incident/Track Services personnel

- RC instructions regarding track condition over radio
- SC dispatched from Pit Exit

RESTART

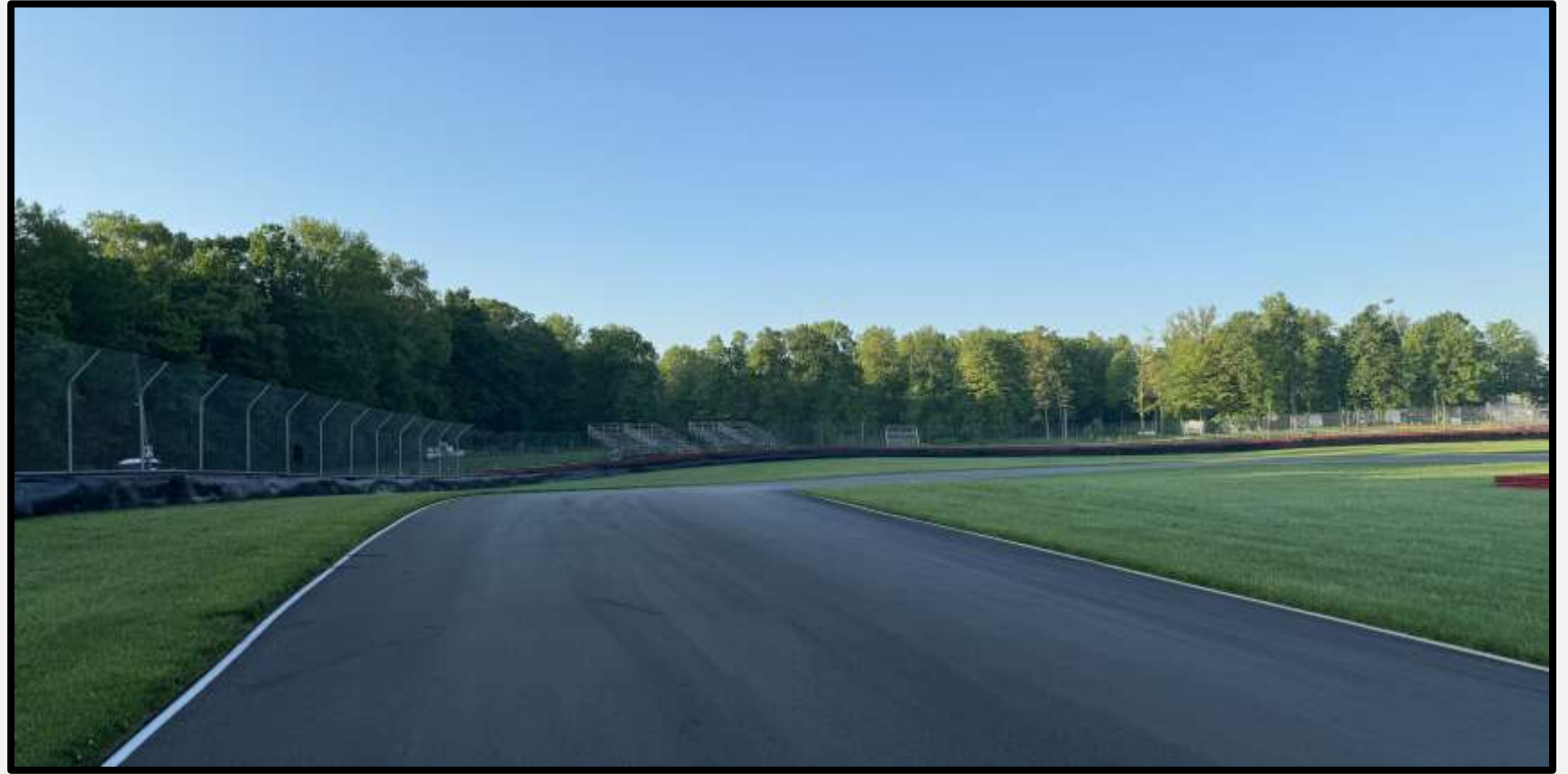
- Maintain SC speed, let SC get away, *no more tire scrubbing after T9*

RESTART ACCELERATION ZONE – Turn 12

- Passing on display of green flag

RESTART ACCELERATION ZONE

- Restart acceleration zone is the entry of Turn 12.
- Passing is permitted when the Green Flag is displayed.



ON-TRACK CONDUCT

LOCAL YELLOW FLAGS (SEE ARTICLE 27)

- No passing from point perpendicular to yellow flag to the point perpendicular to the following green flag

BLOCKING (SEE ARTICLE 30)

- Movement in reaction to the trailing Car
- Defending increases responsibility

CONTACT/INCIDENT RESPONSIBILITY (SEE ARTICLE 30)

- Review with Driver Advisor in RC
- Incidents under review announced by Race Control

COEXISTENCE

- Multi Class Racing
- Maintaining awareness lessens margin for error, regardless of responsibility

COMMUNICATE REVIEW REQUESTS TO PIT OFFICIALS

- Must provide TIME OF DAY, LOCATION, and description of action to be reviewed

ON-TRACK REVIEW / EXPECTATIONS

COTA Reviews

- Overall good racing

Mid-Ohio Specifics

- Not too many passing opportunities 2nd half of track – PATIENCE
- Turns 4-5 – Close quarters, can be side-by-side, AWARENESS

PROMOTIONAL FAN ENGAGEMENT OPPORTUNITIES

Canadian Tire Motorsport Park

Wednesday, July 8 | Clarington Race Fest

Motul Petit Le Mans

Tuesday, September 29 | Kickoff Party Suwanee Town Center



TO LEARN MORE CONTACT

Emily Nash | enash@imsa.com , Hailey Harbrecht | hharbrecht@imsa.com

CANADA BORDER CROSSING INFORMATION

[2026 Canada Border Crossing Information](#) has been published.

- IMSA Canada Border Crossing Overview
- CTMP Invitation Letter
- CBSA Letter
- Canada Event Radio License
- Customs Invoice



2026 CANADA BORDER CROSSING INFO

- Canada Border Crossing Summary
- Livingston International Race Team Packet
- Invitation Letter from Canadian Tire Motorsport Park
- Canada Border Services Agency (CBSA) Event Recognition Letter
- CBP Form 4455
- Customs Bond
- Customs Invoice
- ACE Manifest
- Event Radio Information
- Example: Form 4455
- Example: Race Equipment Manifest
- Example: Race Equipment Invoice
- Example: Inventory



Let Racing Force help you plan for your upcoming racing season with OMP, Bell and Racing Spirit Products!

Racing Force is one of IMSA's longest standing Partners, with more than 15 years as one of IMSA's Proud Partners.

For 2025 Racing Force is offering a **30% discount** on all Racing Force Products to IMSA competitors and teams. This discount can be applied by confirming your participation in an IMSA sanctioned series with the Racing Force Team.

To order Racing Force Products or for more information, please contact:

Kenji Yrey

Custom Products & Logistics Coordinator

Kenji.yrey@racingforce.com

786-479-4722





RACING OPTICS®

Looking for windshield tear-offs?

Racing Optics, a Proud Partner of IMSA, is the industry leader in multilayer, laminated tear-offs, and is proud to offer their product and installation services to IMSA teams and competitors.

For those looking to purchase product away from the track, Racing Optics is excited to offer IMSA teams and competitors a special **20% off promo code** for Racing Optics windshield tear-offs on Pro-Tint's [online shop](#).

Use code **"IMSA20"** at checkout to receive your discount.

To schedule an install or for more information, please contact:

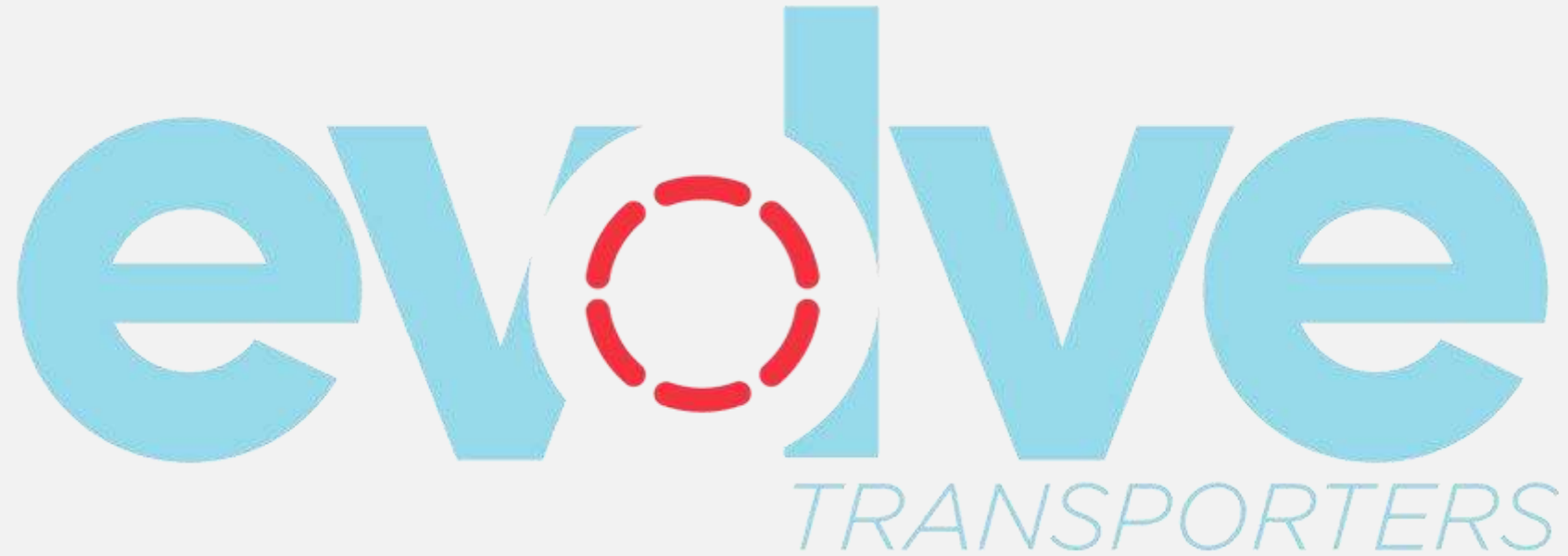
Chris Colton

Applications Engineer / Sponsorships & Corporate Relations

C.Colton@racingoptics.com

980-439-6485





Preventative Maintenance | Repairs | Evaluations | Upgrades

To schedule at-track support, please email:

tracksupport@evolvetransporters.com



STAY*FROSTY® PERFORMANCE COOLANTS



Stay Frosty® Race Ready is a proprietary VP Racing Fuels coolant formulated for high-compression, high-heat racing engines. It contains a specialized blend of heat transfer agents that drastically improve coolant's ability to transfer heat away from high temperature cylinder heads. Temperatures of engines are reduced by up to 30°F compared to conventional glycol-based coolant.

100% Water-Based Glycol-Free Formula

Reduces Engine Temps Up to 30°F

Blended with Chemically Stable Reverse Osmosis Water

Ready-To-Use – Just Pour In (Also Available in Clear)



OFFICIAL PERFORMANCE COOLANT

***Lower Temps.
More Power.***



THANK YOU



VP RACING SPORTSCAR CHALLENGE AT MID-OHIO

SAT. JUN. 6 AT 12:40PM ET | SUN. JUN. 7 AT 7:55AM ET

peacock  YouTube 