



O'REILLY AUTO PARTS 4 HOURS OF MID-OHIO

SUNDAY, JUNE 7 AT 12:10PM ET

peacock YouTube

SERIES CONTACTS

Beaux Barfield	Race Director	(832) 260-1032
Brian Wilson	Series Manager	(386) 281-9494
Marisa Ross	Series Coordinator	(386) 293-1474
Gayle Burnham	Member Services	(386) 235-7800
Cory Posocco	Logistics & Event Ops	(386) 566-8313
Holly Langer	Paddock Layout	(386) 871-0241
David Pees	Timing & Scoring	(386) 308-8866
Eric Haverson	Technical	(386) 562-7214
Johnny Knotts	Pit Lane Supervisor	(813) 763-4669
Paul Walter	Sporting Regulations	(614) 598-6783
Robert Bosworth	Security & HV Safety	(704) 728-8087
Roy Spielmann	Track Services	(414) 702-0905
Ryan McLean	Medical Liaison	(386) 285-6913

[2026 IMSA Operational Contact List](#)

IMSA RESOURCES

IMSA COMPETITOR LANDING PAGE:

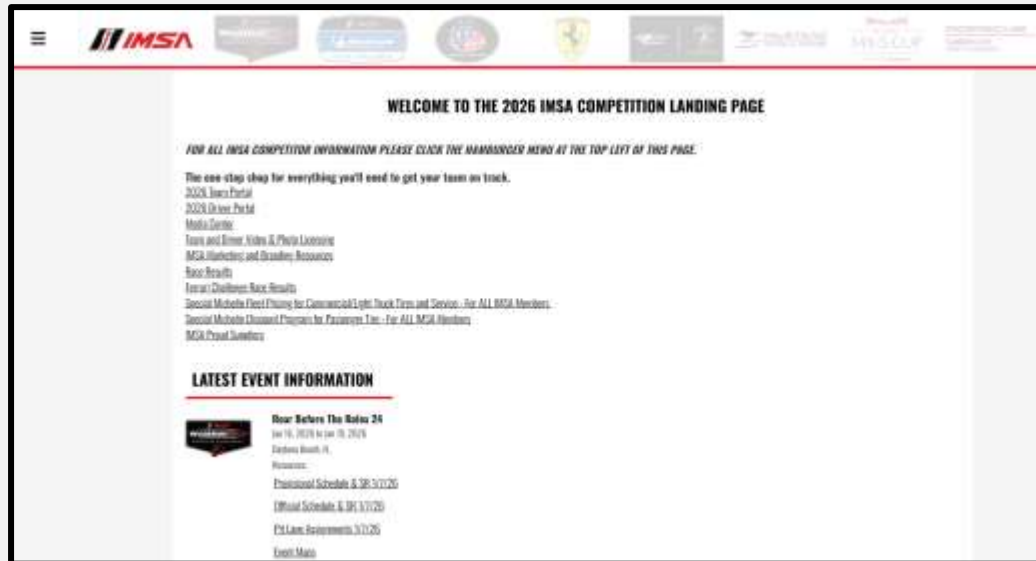
<https://www.imsa.com/competitors/>

- Team Portal
- Event Information
- Rules & Regulations
- Marketing & Branding Page
- All Event Schedules published

IMSA NOTICE BOARD:

<http://results.imsa.com/>

- Driver & TM Briefings
- Entry Lists
- Minute by Minute
- Timing Results
- Penalties



IMSA TRACK SERVICES

IMSA CHASE VEHICLES

- Chase 1 | Porsche Cayenne GTS
- Chase 2 | Porsche Cayenne GTS
- Chase 3 | Ford F-150
- Chase 4 | Ford F-150

ON-TRACK ASSISTANCE

- Communication with Track Services Medic
- Neutral and power shut off
- Follow direction of on-scene Track Services personnel
- Maintain a safe speed and distance when passing on-track incidents with Track Services team members present

Contact: Roy Spielmann 414.702.0905



IMSA AMR Porsche Rapid Response Vehicles PORSCHE CAYENNE GTS



IMSA AMR Ford Raptor Recovery Trucks FORD F-150 RAPTOR

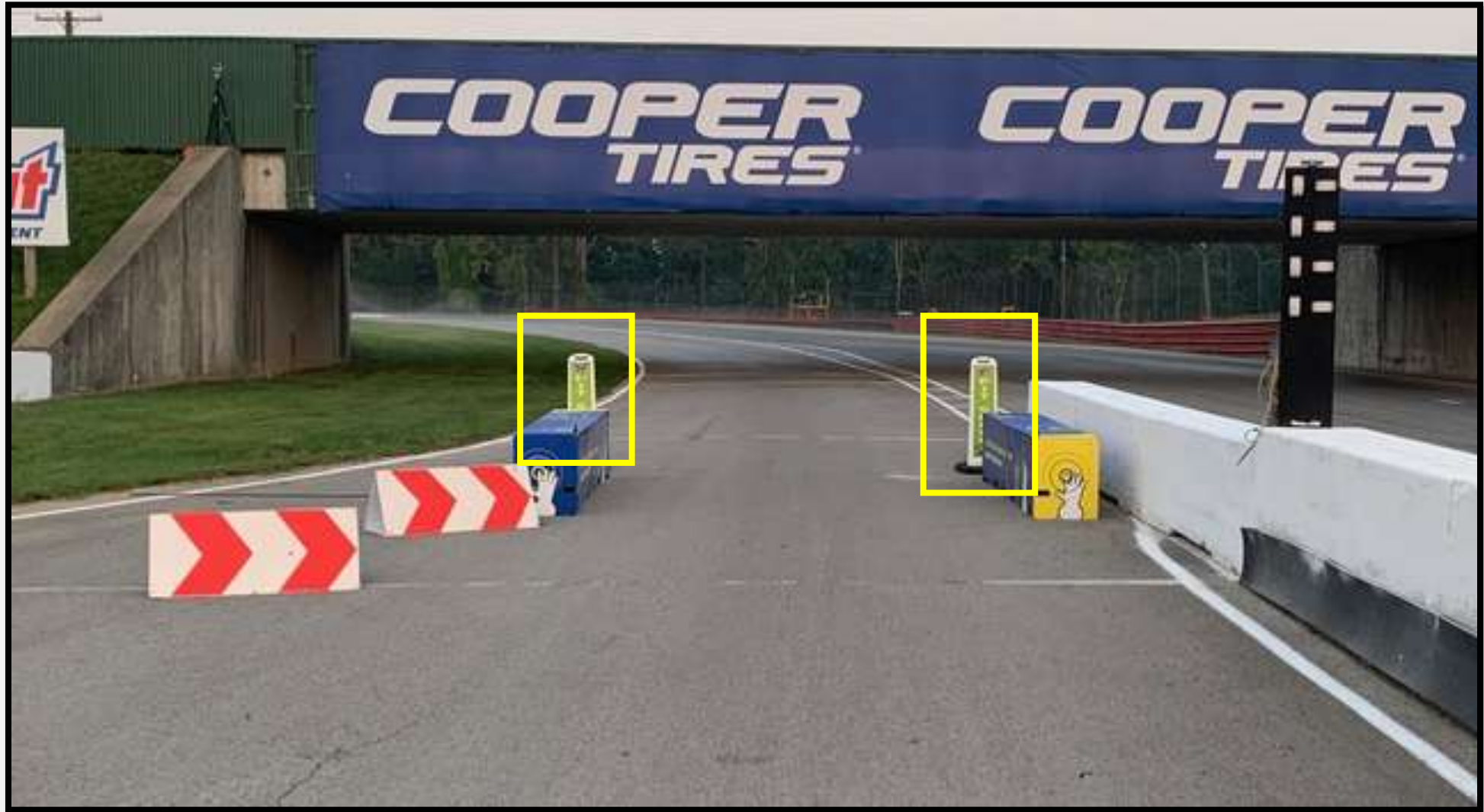
PIT LANE PROTOCOL



PIT EXIT / PENALTY BOX

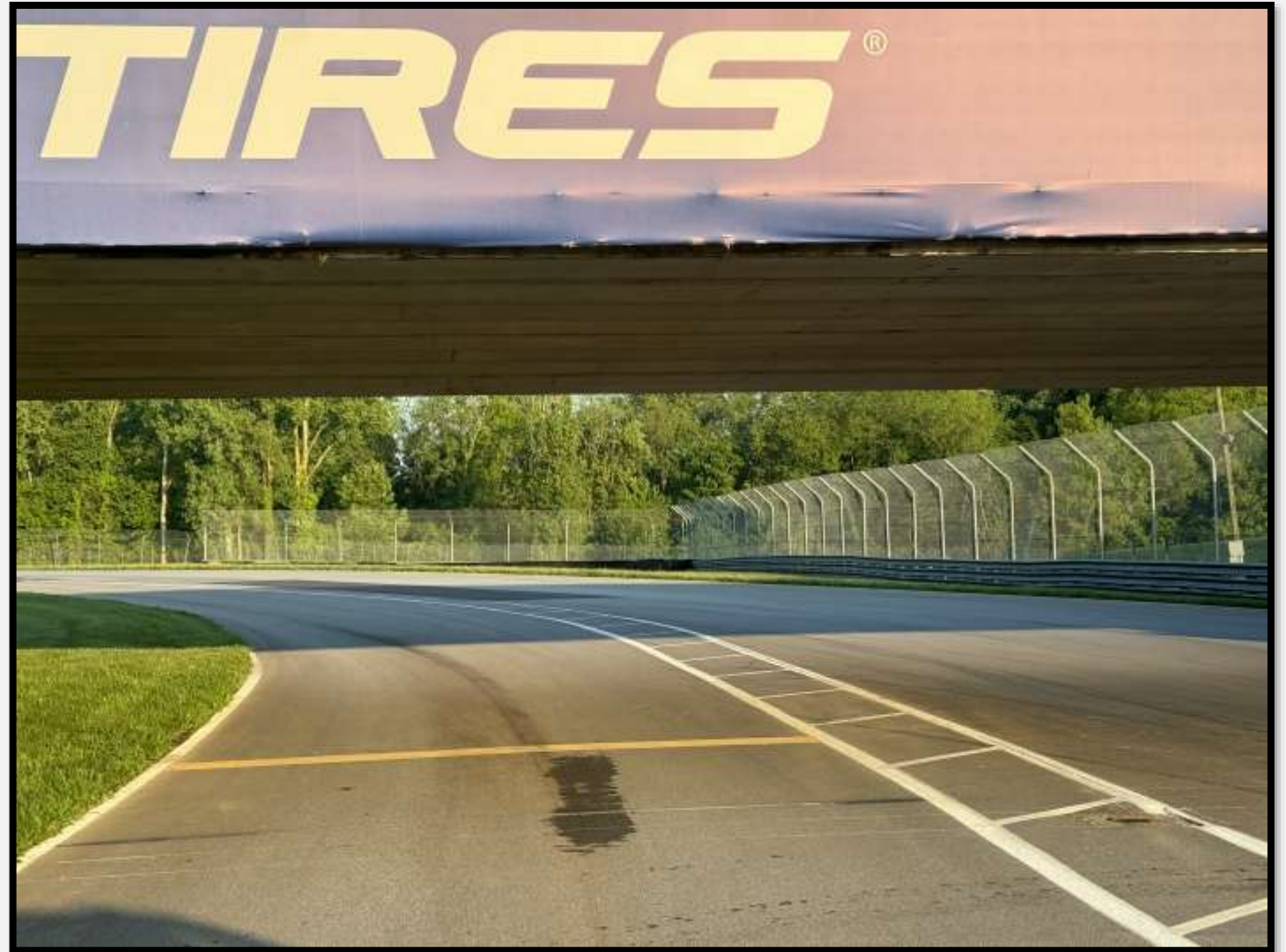


PIT LANE SPEED ENDS



PIT EXIT MERGE

- Cars exiting the Pit Lane must remain FOUR wheels to the left of the merge line and Turn 1 apex curb.
- Cars on track must respect the speed difference of those in the Pit Exit merge lane.
- Track limits enforced.



PIT EXIT MERGE

- Cars exiting the Pit Lane must remain FOUR wheels to the left of the merge line and Turn 1 apex curb.
- Cars on track must respect the speed difference of those in the Pit Exit merge lane.
- Track limits enforced.



ORANGE OVERLAPS – TURN 1

- Overlaps are marked throughout the Circuit and are indicated on the Official Track Map.
- Competitors with disabled Cars are requested to exit at these locations when unable to continue to the pits.



ORANGE OVERLAPS – TURN 2

- Overlaps are marked throughout the Circuit and are indicated on the Official Track Map.
- Competitors with disabled Cars are requested to exit at these locations when unable to continue to the pits.



START LINE



ORANGE OVERLAPS – TURN 3

- Overlaps are marked throughout the Circuit and are indicated on the Official Track Map.
- Competitors with disabled Cars are requested to exit at these locations when unable to continue to the pits.



ORANGE OVERLAPS – TURN 5 & 6

- Overlaps are marked throughout the Circuit and are indicated on the Official Track Map.
- Competitors with disabled Cars are requested to exit at these locations when unable to continue to the pits.



ORANGE OVERLAPS – TURN 11 & 12

- Overlaps are marked throughout the Circuit and are indicated on the Official Track Map.
- Competitors with disabled Cars are requested to exit at these locations when unable to continue to the pits.



RESTART ACCELERATION ZONE – TURN 12

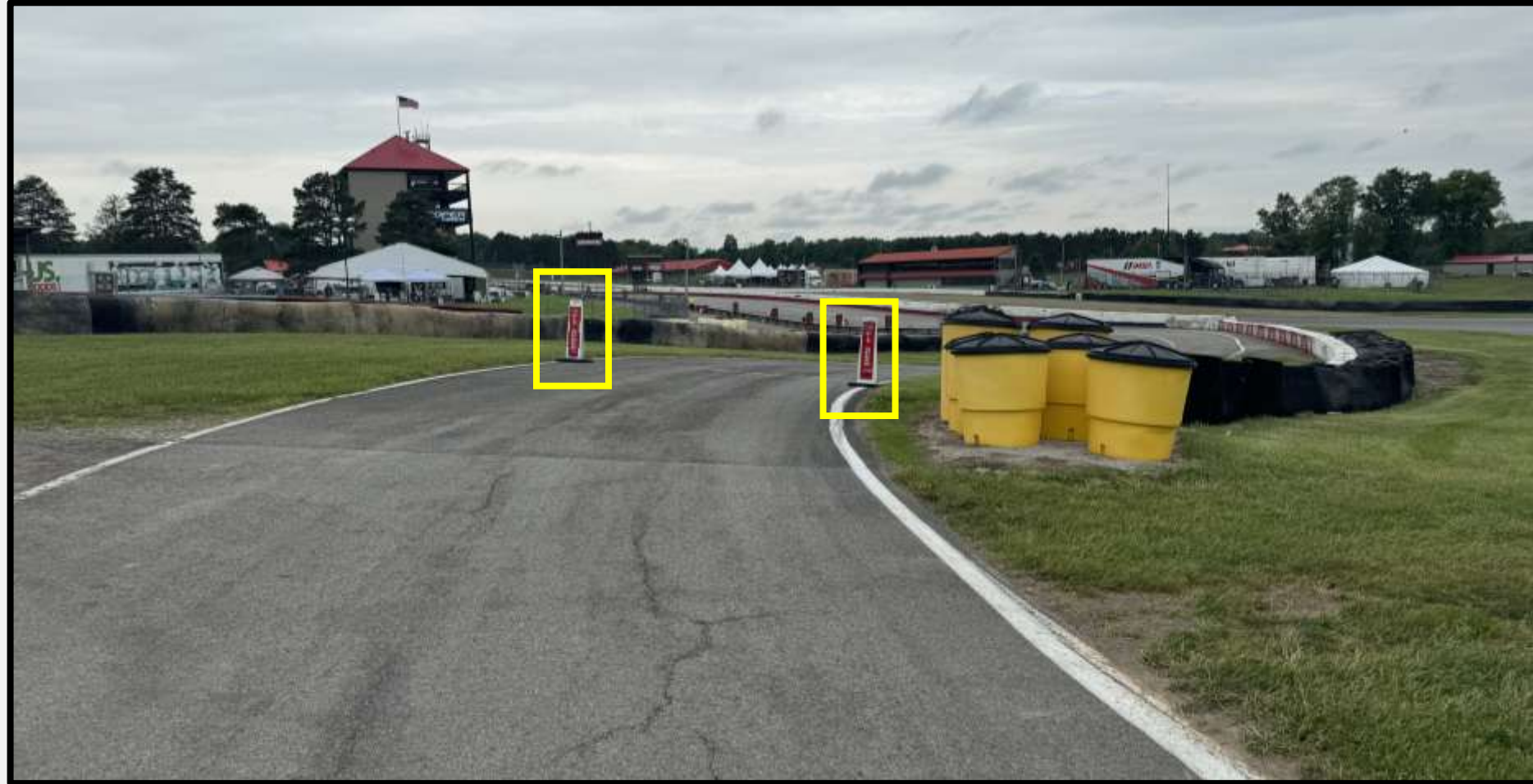


PIT ENTRY / PIT COMMIT



PIT LANE SPEED LIMIT BEGINS

- Pit Lane speed limit begins at Red Pylons
- Pit Lane speed - 60 kph



RACE

- **Two+ (2+) Formation Laps**
- **Pack up first time by/pair up out of T1**
- **Stay with Safety Cars**
- **Safety Cars enter pits**
- **This is a split start**
 - The GS and TCR polesitters are given instructions prior to the Race
- **Acceleration point (polesitters)**
- **Jump/false start reviews**
 - Gaps
 - Timed/early acceleration
 - Out of line
 - Column passing
 - Changing lanes
- **Official Race Start is second time by the Finish Line. Green Flag occurs moments later, at the Start Line.**

STANDARD FULL COURSE YELLOW

- **Pits Closed**
- **Full Course Yellow**
- **Leader – Safety Car speed**
 - Safety Car dispatched from pit exit to overall leader
- **Pits Open (GS)**
- **Pits Open (TCR)**
- **Emergency Service Cars must D-T (no guarantee of yellow)**
 - Emergency service fuel Cars must fuel at first opportunity
 - Failure to perform emergency service drive-through: Stop plus 10 seconds
 - More than emergency service taken: Stop plus 60 seconds
- **Final Wave-By (no tire scrubbing)**
- **Class Split (complete when Safety Car lights are extinguished)**
- **Restart**
- **Standard FCY not in effect during first 30 minutes and final 30 minutes of a Race**

SHORT FULL COURSE YELLOW

- **Any FCY within 30 minutes of start, OR first FCY within 15 minutes of a restart from a standard FCY and FCY within the final 30 minutes of a Race**
 - Pits Closed
 - Full Course Yellow
 - Leader – Safety Car speed
 - Safety Car dispatched from pit exit to overall leader
 - Pits remain closed
 - No Final Wave-By
 - Class Split (complete when Safety Car lights are extinguished)
 - Pits open after all Cars pass pit-in coming to the restart
 - Restart
 - Emergency Service Cars must D-T
- **Emergency service fuel Cars must fuel at first opportunity**
- **Failure to perform emergency service drive through: Stop plus 10 seconds**
- **More than emergency service taken: Stop plus 60 seconds**

ON TRACK

- **RESTARTS**
- **LOCAL YELLOWS**
- **BLOCKING / DEFENDING INCREASE RESPONSIBILITY**
 - Proactive vs. Reactive
- **CONTACT**
 - Responsibility
 - Class Racing
 - Multi-class incidents
 - No Surprises
- **COEXISTENCE**
 - Awareness
 - Coexist

RACE CONTROL

RACE CONTROL NOTIFICATION SYSTEM (INSTANT MESSAGE)

- Provide specific information for inquiry and must include time of day
- Race Control does not respond to blue flag/traffic requests
- Race Control does not respond to requests regarding other competitors

DRIVE TIME

- Inquiries should be sent to Scoring, NOT Race Control
- Please review Drive Time regulations to understand calculations

PACK UP GAPS

- Drivers leaving gaps under full course yellows may be penalized and/or other competitors may be permitted to overtake

RACE CONTROL

- **COMMUNICATION**

- Radio Communications
- Race Control Notification System (RCNS)/Instant Messenger
 - Race Control
 - Timing & Scoring
 - Technical Department

- **REVIEW PROCESS**

- Data
- Video
- All incidents are reviewed for the purpose of apportioning individual responsibility that may result in penalties. Race how you expect to be raced and be aware of new competitors. Best of luck and make it a great race!



Let Racing Force help you plan for your upcoming racing season with OMP, Bell and Racing Spirit Products!

Racing Force is one of IMSA's longest standing Partners, with more than 15 years as one of IMSA's Proud Partners.

For 2025 Racing Force is offering a **30% discount** on all Racing Force Products to IMSA competitors and teams. This discount can be applied by confirming your participation in an IMSA sanctioned series with the Racing Force Team.

To order Racing Force Products or for more information, please contact:

Kenji Yrey

Custom Products & Logistics Coordinator

Kenji.yrey@racingforce.com

786-479-4722





RACING OPTICS®

Looking for windshield tear-offs?

Racing Optics, a Proud Partner of IMSA, is the industry leader in multilayer, laminated tear-offs, and is proud to offer their product and installation services to IMSA teams and competitors.

For those looking to purchase product away from the track, Racing Optics is excited to offer IMSA teams and competitors a special **20% off promo code** for Racing Optics windshield tear-offs on Pro-Tint's [online shop](#).

Use code **"IMSA20"** at checkout to receive your discount.

To schedule an install or for more information, please contact:

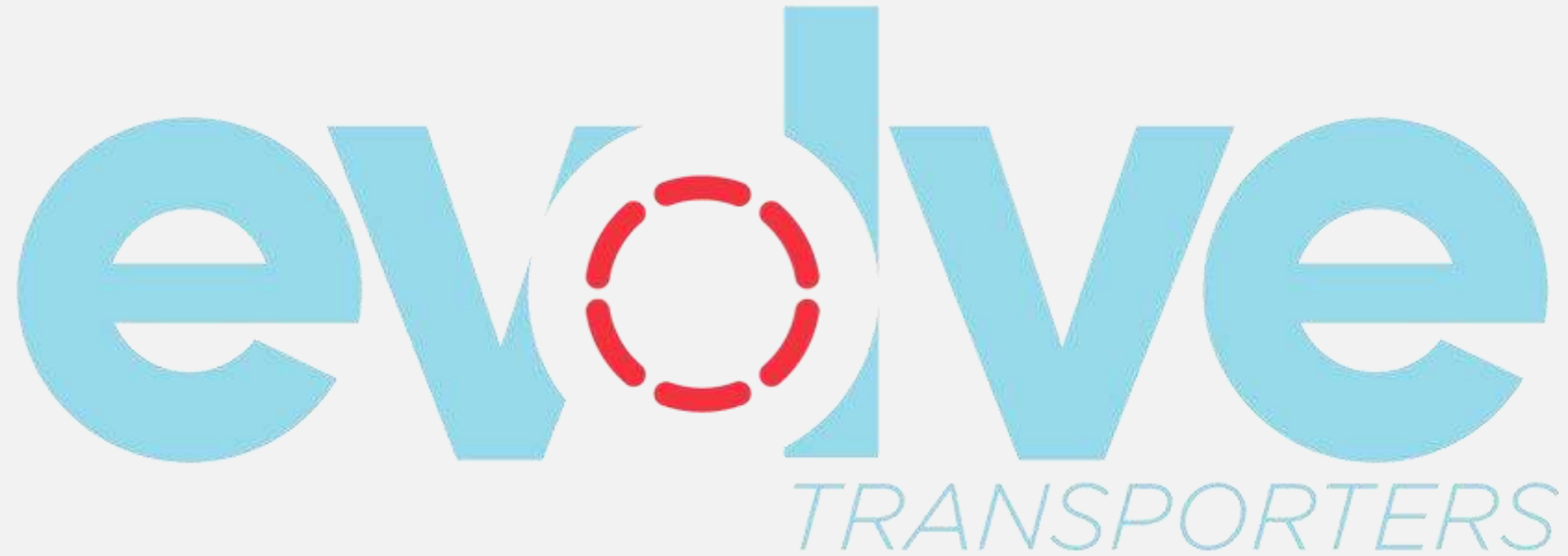
Chris Colton

Applications Engineer / Sponsorships & Corporate Relations

C.Colton@racingoptics.com

980-439-6485





Preventative Maintenance | Repairs | Evaluations | Upgrades

To schedule at-track support, please email:

tracksupport@evolvetransporters.com



STAY*FROSTY[®]

PERFORMANCE COOLANTS



Stay Frosty[®] Race Ready is a proprietary VP Racing Fuels coolant formulated for high-compression, high-heat racing engines. It contains a specialized blend of heat transfer agents that drastically improve coolant's ability to transfer heat away from high temperature cylinder heads. Temperatures of engines are reduced by up to 30°F compared to conventional glycol-based coolant.

100% Water-Based Glycol-Free Formula

Reduces Engine Temps Up to 30°F

Blended with Chemically Stable Reverse Osmosis Water

Ready-To-Use – Just Pour In (Also Available in Clear)



OFFICIAL PERFORMANCE COOLANT

***Lower Temps.
More Power.***



O'REILLY AUTO PARTS 4 HOURS OF MID-OHIO

SUNDAY, JUNE 7 AT 12:10PM ET

peacock YouTube