



TEAM MANAGER BRIEFING



IMSA AIRBNB ENDURANCE CHALLENGE

SERIES CONTACTS

USAC	John Maesky	Operations	(609) 774-7862
	Randy Hembrey	Operations/Logistics	(847) 809-3969
	Crystal Ayers	Logistics	(434) 710-8936
IMSA	Randy Buck	Race Director	(415) 298-7018
	Brian Wilson	Series Manager	(386) 281-9494
	Carol Mueller	Member Services	(386) 262-8932
	Marisa Ross	Series Coordinator	(386) 293-1474
	David Pees	Timing & Scoring	(386) 308-8866
	Scott Ellison	Technical	(734) 621-9130
	Paul Walter	Sporting Regulations	(614) 598-6783
	Dawn Zinsmaster	Communications/Media	(386) 589-9335
	Ryan McLean	Medical Liaison	(386) 285-6913

IMSA RESOURCES

IMSA COMPETITOR LANDING PAGE:

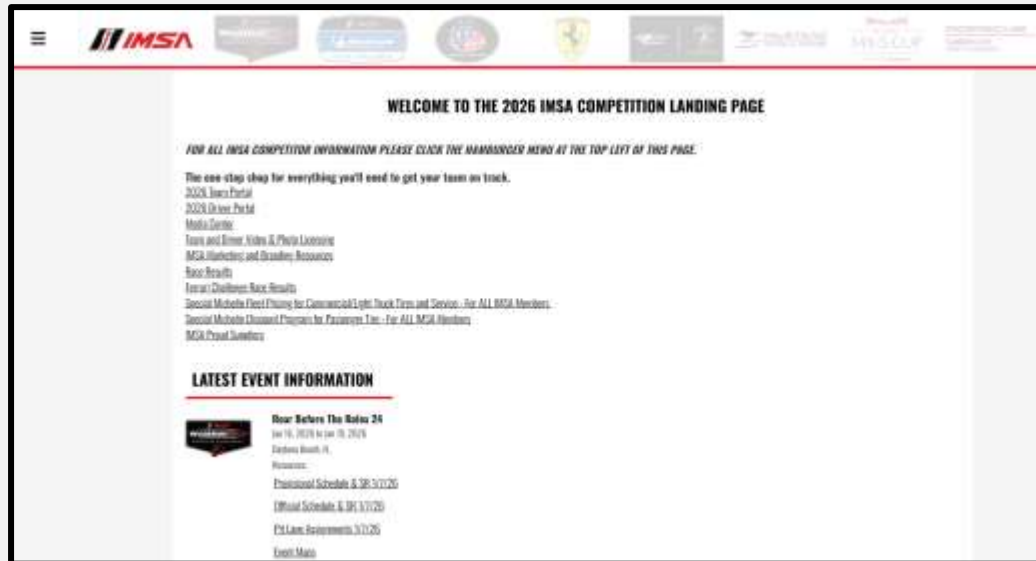
<https://www.imsa.com/competitors/>

- Team Portal
- Event Information
- Rules & Regulations
- Marketing & Branding Page
- All Event Schedules published

IMSA NOTICE BOARD:

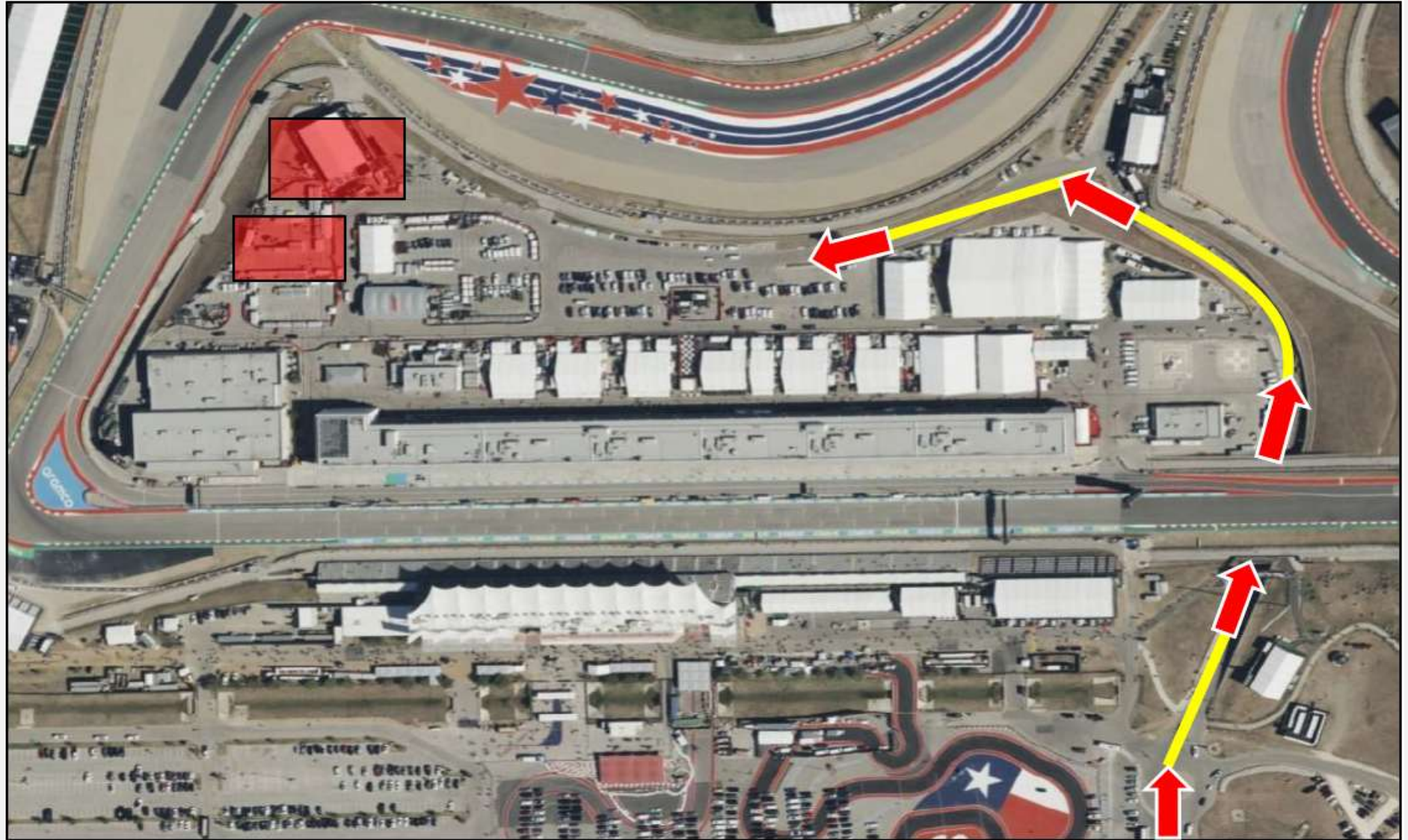
<http://results.imsa.com/>

- Driver & TM Briefings
- Entry Lists
- Minute by Minute
- Timing Results
- Penalties



TO TEAM PARKING

- Directions**
1. Enter through the Main Entrance using Circuit of the Americas Blvd
 2. Proceed through Lot A to access the front straight tunnel
 3. Stay left and enter the Paddock
 4. Park in the designated Team Parking area





PADDOCK

**PROHIBITED
ANY ONE, TWO OR
THREE-WHEEL FORM OF
TRANSPORTATION**

**ONLY PROPERLY
PERMITTED VEHICLES ACCEPTED
EXCEPTIONS FOR VESTED MEDIA
AND ADA TRANSPORT**

Motorcycles, drones, bicycles, skateboards, rollerblades and other non-motorized transportation, as well as motor scooters of one, two or three-wheels and/or designed to transport one or two persons, are prohibited in the garage, pit and/or Paddock areas except authorized power-driven mobility devices (ADA requirements - Americans with Disabilities Act), and accredited and vested media personnel.

Pit vehicles must only be operated by an IMSA credential holder. Motorized carts and similar 3- or 4-wheeled conveyances must not be driven into pit lane except pit equipment approved for a Series or as specified in the SR.

Such use in the Paddock must be for legitimate purposes only.

Excessive speed and/or unsafe operation is prohibited. Participants must abide by state laws and Promoter restrictions regarding licensing, maximum speed, helmet requirement and use.

Such conveyances may be prohibited at certain Events or in certain areas of each facility by local ordinance or Promoter limitation.

EMERGENCY SERVICES

For EMS (Emergency & Non-Emergency)

- During hours of operations (daytime), call Security Department at (512-655-6220).
- If no answer, call 911 and provide address: 9201 Circuit of the Americas Blvd. Austin, TX 78617
- Provide specifics of need

For Law Enforcement (Emergency & Non-Emergency)

- Call Security Department at (512-655-6220).
- If no answer, call 911 and provide address: 9201 Circuit of the Americas Blvd. Austin, TX 78617
- Provide specifics of need

For Fire (Emergency & non-emergency)

- Call Security Department at (512-655-6220).
- If no answer, call 911 and provide address: 9201 Circuit of the Americas Blvd. Austin, TX 78617
- Provide specifics of need

TRACK SERVICES

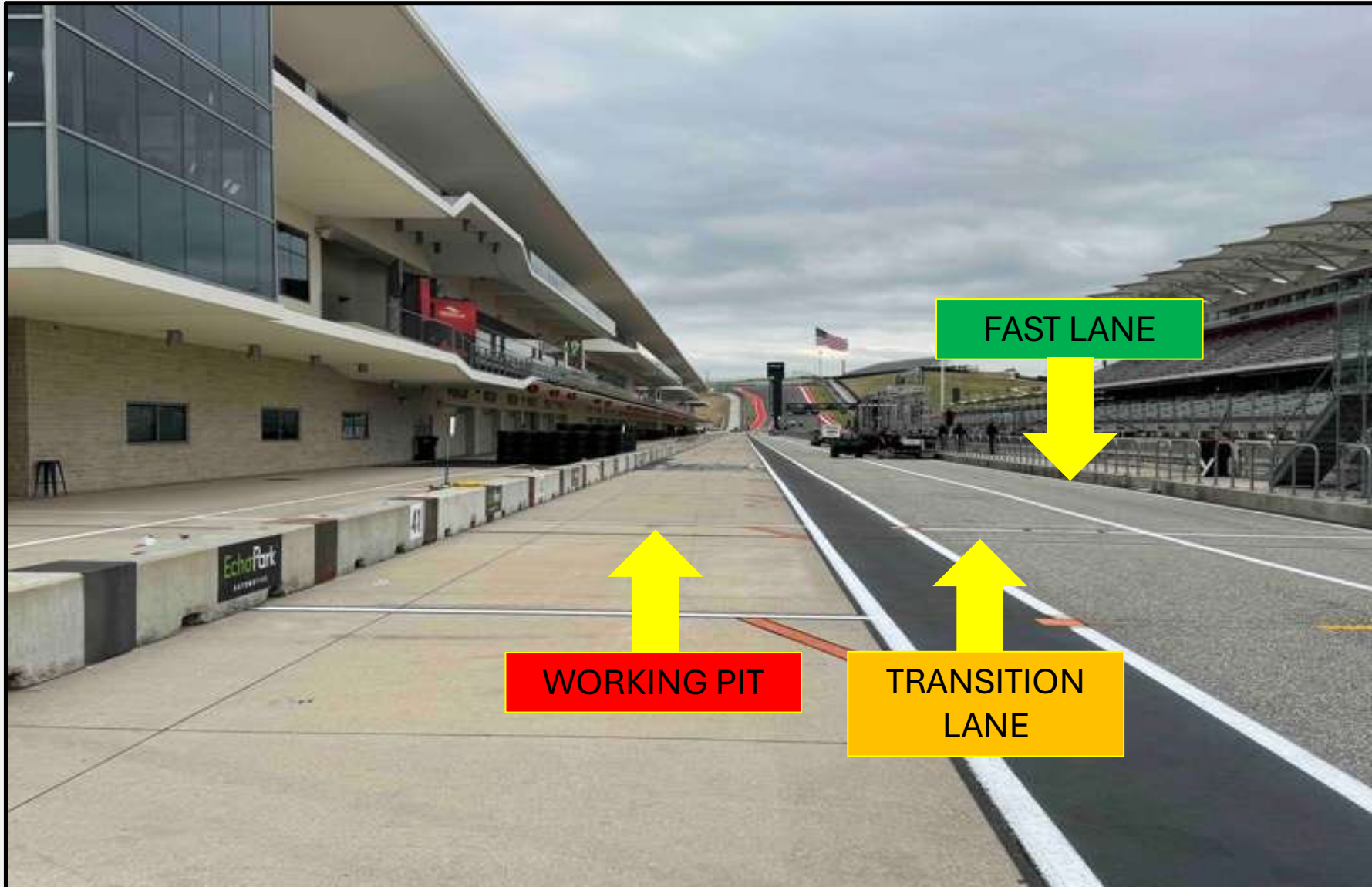
ON-TRACK ASSISTANCE

- USAC/Local Track Services personnel.
- For any Cars recovered from an on-track incident after contact with barriers/another car, the Driver must be evaluated and medically cleared by the designated onsite physician (Dr. Dimitrijevski “Dr. D”) prior to returning to competition.
- Chase vehicles are not on-site. Drivers are transported using track ambulances.
- Follow direction of on-scene Track Services personnel.
- Maintain safe speed and distance around on-track incidents where Track Services personnel are present.

EVENT UPDATES

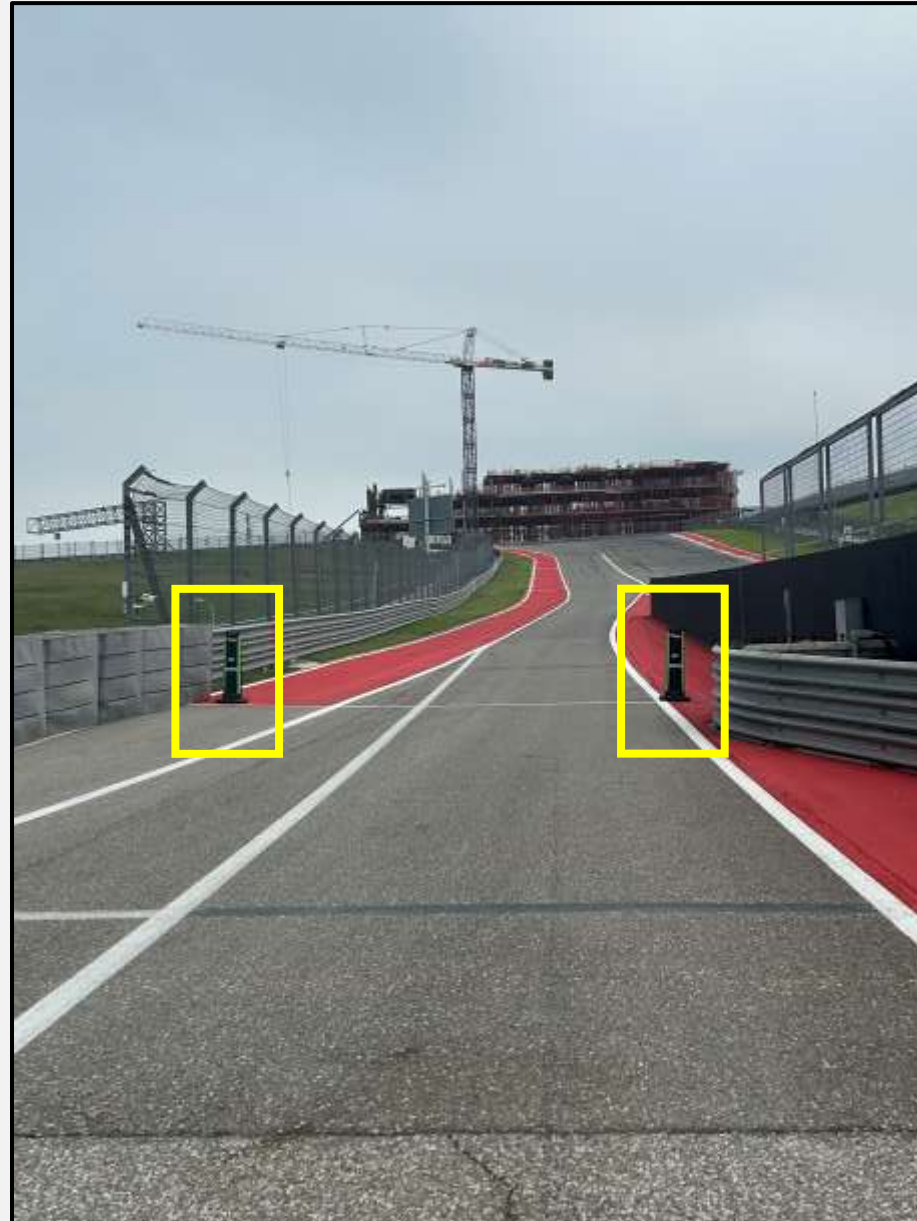
- Monitor IMSA Team Radio frequency in cases of severe weather and/or any at-track scheduling changes.

PIT LANE PROTOCOL



PIT EXIT / PIT LANE SPEED ENDS

- Pit Lane Speed Limit ends at Black pylons.



PENALTY BOX

- Penalty Box located Driver's left at Pit Exit.



PIT EXIT

- Cars exiting the Pit Lane must remain FOUR wheels to the left of the blend line until it ends in Turn 1.
- Cars on track must respect the speed difference of those in the Pit Exit merge lane.



SHORTCUT (CORNER APEXES)

- Violation: All four (4) tires inside the **RED and WHITE CURB** AT THE APEX OF CORNERS (NOT green and white paint) is outside track limits.



TRACK LIMITS (CORNER EXITS)

- Violation: All four (4) tires outside the GREEN and white painted surface AT THE EXIT OF CORNERS is outside track limits.



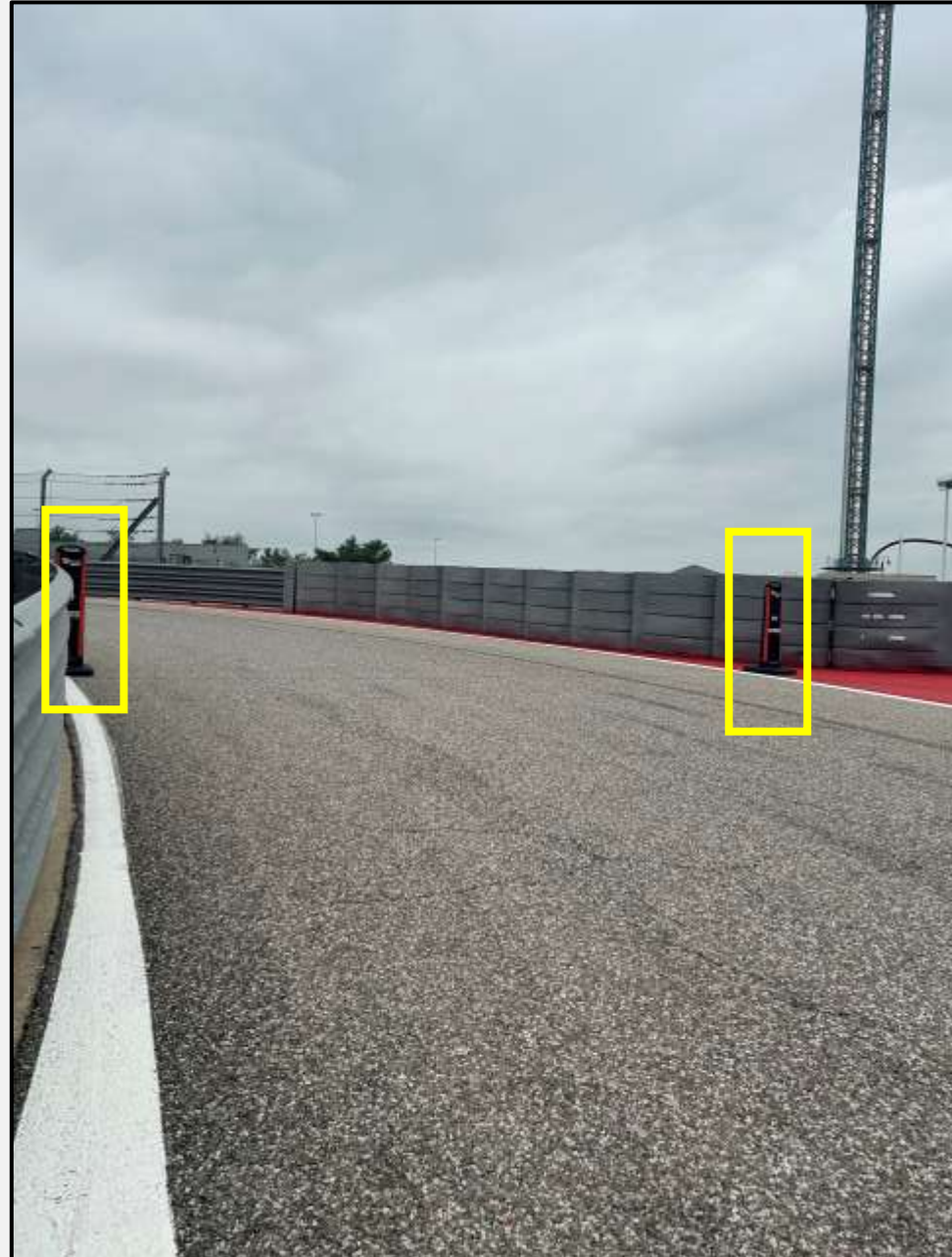
PIT COMMIT

- Must have one tire (or more) over white line prior to announcement of FCY.



PIT LANE SPEED LIMIT

- Pit Lane Speed Limit begins at Black pylons.



ORANGE OVERLAPS

- Overlaps are marked throughout the Circuit.
- Competitors with disabled Cars are requested to exit at these locations when unable to continue to the pits.



ORANGE OVERLAPS

- Overlaps are marked throughout the Circuit.
- Competitors with disabled Cars are requested to exit at these locations when unable to continue to the pits.



PIT STOPS

- **TWO 2' 30" Timed Pit Stops are required (Art 34.1.3.A)**
 - **Must not be initiated before 15 minutes have elapsed from the start of the Race**
 - **Must be completed prior to 15 minutes remaining in the Race**
- A 2' 30" Timed Pit Stop is required for any stop that includes a driver change, refueling (other than emergency service), or changing 4 tires (including changing to or from dry/wet tires).
- Changing tires while refueling is prohibited. **This includes any task associated with changing tires, for example torque wrenches.**
- **Unattended tires – Tires without crew**
- Any other pit stops are not timed (change a flat tire, damage repair, etc.).
- Driver must change Driver ID plug before leaving pit exit or it will not register.
- Driving slower than 60kph or stopping in the fast lane to meet Minimum Timed Stop time subject to penalty.

FUELING

Art. 37.5. (SSR) Endurance Events. Practice. During Sessions, refueling is also permitted by means of an approved un-pressurized container not exceeding 25 liters (6.5 gallons) capacity, vented to atmosphere and with a leak-proof coupling connecting it to the Car.

- During **Practice**, only crew over the wall while fueling need to be properly attired per Article 21. During the **Race**, all crew over the wall at any time, must be properly attired per Article 21.

RACE EQUIPMENT & FUEL TRANSFER

37.3. (SSR) **Fuel Transfer & Refueling**.....**For any transfer of fuel or refueling, Crew must be properly attired per Art. 21**, with goggles worn over the eyes or a visor on the helmet that is down, during the actual fuel transfer or refueling and as detailed throughout Art. 37. A Crew member manning a fire extinguisher must always be in attendance during the transfer of fuel.

37.3.1. (SSR) Refueling and/or fuel transfer in permanent garage structures is prohibited.....Crew must comply with Art. 21 and Art. 37.3.

5.3.4. **Member Responsibility**. All Members are obligated to inspect the facility, safety personnel and equipment and conditions of the racetrack on a continuing basis before, during, and after the Event.....**Members also are solely and directly responsible for the safety of their Race Equipment** and are obligated to perform their duties in a manner designed to minimize to the risk of injury to themselves and others

- ***Race Equipment** means a Car, Car part, engine, engine component, tires, fuel, support equipment and/or any other part or related equipment.*

TIMING & SCORING

PIT LANE TIMING:

- Live Timing available at imsa.com and results.imsa.com
- No Red Data boxes at this event.
- Timing support: timing@alkamelna.com

For the COTA AEC Event - **Non-Functioning Transponder.**

Practice / Qualifying - A non-functioning transponder requires immediate stop and repair and may include additional penalties.

Race – when a Car is not registering officially timed laps, IMSA may continue to score the Car (i.e. their physical position or lap count relative to other Cars during a Race shall continue to be recorded) and may display unofficial times; however, such manual scoring is not guaranteed and it remains the responsibility of the Competitor to respond appropriately to notification of transponder failure and to repair or replace the equipment as required to ensure official credit for laps and lap times. Competitor submitted data and/or video, or other materials are not considered unless specifically requested by IMSA.

PRACTICE 3 SESSION

NEW FOR COTA

- A third Practice Session has been added to the schedule for Friday, May 8.
- Teams are permitted to remain on pit lane in between Practice 3 and Qualifying.
- Tire changes, refueling, and Driver changes are permitted in pit lane prior to the car leaving the pit box to start Qualifying.

1:45 PM	2:00 PM	15	IMSA AEC	Practice 3
2:10 PM	2:25 PM	15	IMSA AEC (LMP3)	Qualifying

TIRE ALLOCATION

- 5 Tire sets available for use.

RFID READERS

- No RFID readers.
- Michelin hand-scanning each tire.

Casey Halbrook:

- Cell: (352) 316-4047
- Email: casey.halbrook@michelin.com



Let Racing Force help you plan for your upcoming racing season with OMP, Bell and Racing Spirit Products!

Racing Force is one of IMSA's longest standing Partners, with more than 15 years as one of IMSA's Proud Partners.

For 2025 Racing Force is offering a **30% discount** on all Racing Force Products to IMSA competitors and teams. This discount can be applied by confirming your participation in an IMSA sanctioned series with the Racing Force Team.

To order Racing Force Products or for more information, please contact:

Kenji Yrey

Custom Products & Logistics Coordinator

Kenji.yrey@racingforce.com

786-479-4722





RACING OPTICS®

Looking for windshield tear-offs?

Racing Optics, a Proud Partner of IMSA, is the industry leader in multilayer, laminated tear-offs, and is proud to offer their product and installation services to IMSA teams and competitors.

For those looking to purchase product away from the track, Racing Optics is excited to offer IMSA teams and competitors a special **20% off promo code** for Racing Optics windshield tear-offs on Pro-Tint's [online shop](#).

Use code **"IMSA20"** at checkout to receive your discount.

To schedule an install or for more information, please contact:

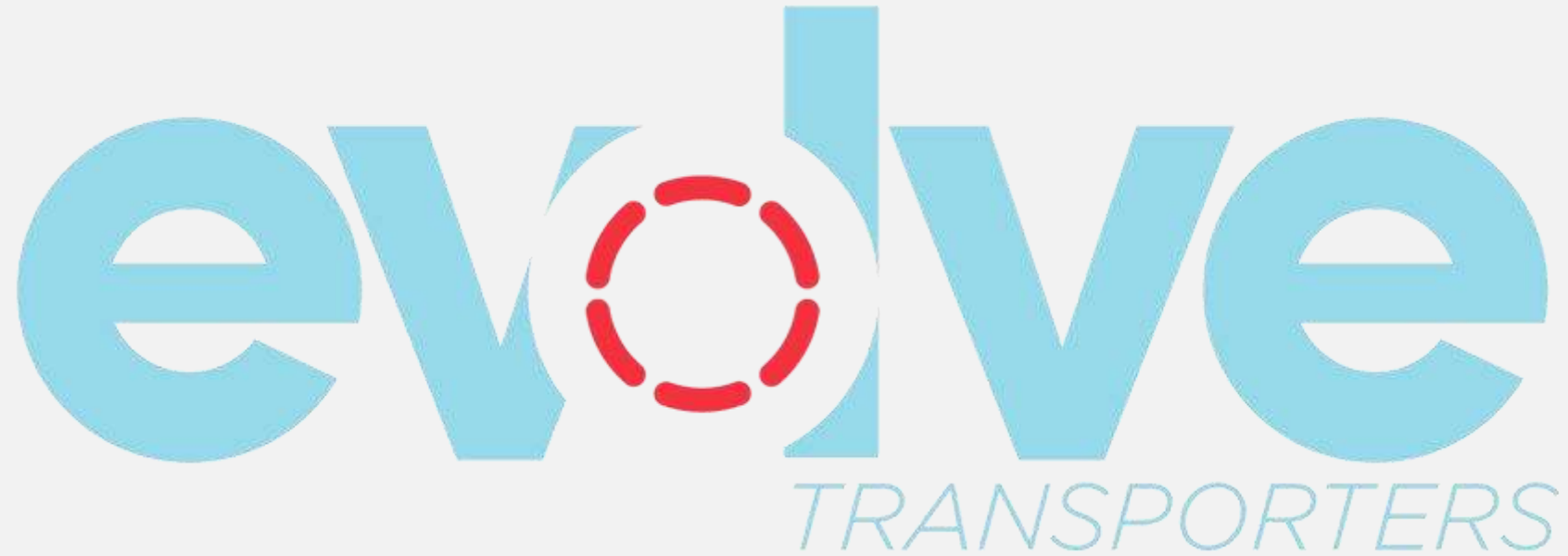
Chris Colton

Applications Engineer / Sponsorships & Corporate Relations

C.Colton@racingoptics.com

980-439-6485





Preventative Maintenance | Repairs | Evaluations | Upgrades

To schedule at-track support, please email:

tracksupport@evolvetransporters.com



STAY*FROSTY[®]

PERFORMANCE COOLANTS



Stay Frosty[®] Race Ready is a proprietary VP Racing Fuels coolant formulated for high-compression, high-heat racing engines. It contains a specialized blend of heat transfer agents that drastically improve coolant's ability to transfer heat away from high temperature cylinder heads. Temperatures of engines are reduced by up to 30°F compared to conventional glycol-based coolant.

100% Water-Based Glycol-Free Formula

Reduces Engine Temps Up to 30°F

Blended with Chemically Stable Reverse Osmosis Water

Ready-To-Use – Just Pour In (Also Available in Clear)



OFFICIAL PERFORMANCE COOLANT

***Lower Temps.
More Power.***

THANK YOU



IMSA AIRBNB ENDURANCE CHALLENGE

DRIVER & TEAM MANAGER MEETING



TIMED PIT STOP

Penalties for failure to meet Minimum Timed Pit Stop

- If the Car is in the pit lane for a time that is less than (or equal to) ten (10) seconds under the pit stop time required:
 - **Drive Through**
- If the Car is in the pit lane for a time that is more than ten (10) seconds under the pit stop time required:
 - **Stop plus 120 seconds**

RACE

One (1) FORMATION lap

Stay with Safety Car until Safety Car enters pits

Pack up on the way to T12 / Pair up in T16-18 (No more tire scrubbing after T16)

Acceleration Point (Polesitter)

Jump/False start Reviews

- Gaps
- Timed/Early Acceleration
- Out of Line
- Column Passing – Passing Cars in your column is PROHIBITED until across the S/F line

Official Race start is FIRST time by

FULL COURSE YELLOW

Failure to maintain proper Safety Car speed and correct gaps between Cars, or otherwise initiate manipulative action to gap Cars, is prohibited and subject to penalty.

Race Control radio, in-car lights, trackside lights, double yellow flags displayed

Response vehicles may begin to move as soon as FCY is announced

Leader to Safety Car speed, all Cars pack up – respect the area of incident/Track Services personnel

- RC instructions regarding track condition over radio
- SC dispatched from Pit Exit

RESTART

- Maintain SC speed, let SC get away, *no more tire scrubbing after T16*

RESTART ACCELERATION ZONE – EXIT OF Turn 19

- Passing on display of green flag

RESTART ACCELERATION ZONE

- Restart Acceleration Zone is after the exit of Turn 19.
- Passing is permitted when the Green Flag is displayed.



ON-TRACK CONDUCT

LOCAL YELLOW FLAGS (SEE ARTICLE 27)

- No passing from point perpendicular to yellow flag to the point perpendicular to the following green flag

BLOCKING (SEE ARTICLE 30)

- Movement in reaction to the trailing Car
- Defending increases responsibility

CONTACT/INCIDENT RESPONSIBILITY (SEE ARTICLE 30)

- Review with Driver Advisor in RC
- Incidents under review announced by Race Control

COEXISTENCE

- ~~Multi-Class Racing~~
- Maintaining awareness lessens margin for error, regardless of responsibility

COMMUNICATE REVIEW REQUESTS TO PIT OFFICIALS

- Must provide TIME OF DAY, LOCATION, and description of action to be reviewed

ON-TRACK REVIEW / EXPECTATIONS

Sebring Review

- Great first event!

COTA Specifics

- Turn 1 starts
- Turn 3 speed - potential for crashing
- Turns 12, 19, 20 Track Limits



Let Racing Force help you plan for your upcoming racing season with OMP, Bell and Racing Spirit Products!

Racing Force is one of IMSA's longest standing Partners, with more than 15 years as one of IMSA's Proud Partners.

For 2025 Racing Force is offering a **30% discount** on all Racing Force Products to IMSA competitors and teams. This discount can be applied by confirming your participation in an IMSA sanctioned series with the Racing Force Team.

To order Racing Force Products or for more information, please contact:

Kenji Yrey

Custom Products & Logistics Coordinator

Kenji.yrey@racingforce.com

786-479-4722





RACING OPTICS®

Looking for windshield tear-offs?

Racing Optics, a Proud Partner of IMSA, is the industry leader in multilayer, laminated tear-offs, and is proud to offer their product and installation services to IMSA teams and competitors.

For those looking to purchase product away from the track, Racing Optics is excited to offer IMSA teams and competitors a special **20% off promo code** for Racing Optics windshield tear-offs on Pro-Tint's [online shop](#).

Use code **"IMSA20"** at checkout to receive your discount.

To schedule an install or for more information, please contact:

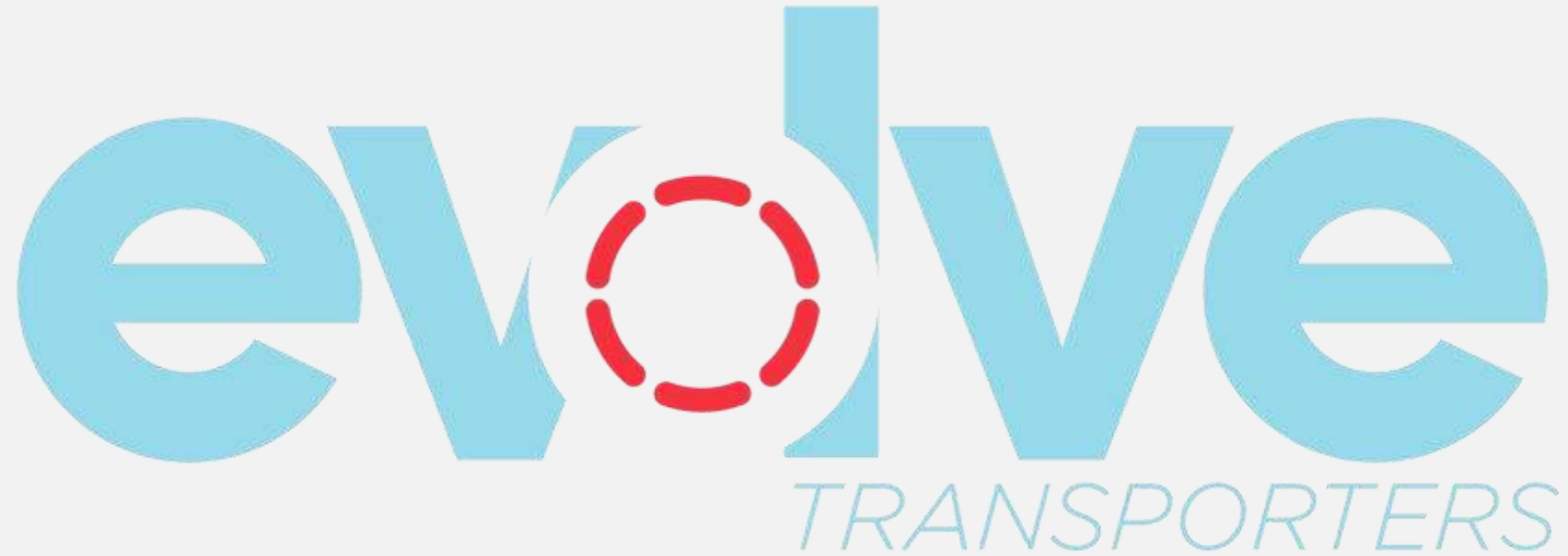
Chris Colton

Applications Engineer / Sponsorships & Corporate Relations

C.Colton@racingoptics.com

980-439-6485





Preventative Maintenance | Repairs | Evaluations | Upgrades

To schedule at-track support, please email:

tracksupport@evolvetransporters.com



STAY*FROSTY® PERFORMANCE COOLANTS



Stay Frosty® Race Ready is a proprietary VP Racing Fuels coolant formulated for high-compression, high-heat racing engines. It contains a specialized blend of heat transfer agents that drastically improve coolant's ability to transfer heat away from high temperature cylinder heads. Temperatures of engines are reduced by up to 30°F compared to conventional glycol-based coolant.

100% Water-Based Glycol-Free Formula

Reduces Engine Temps Up to 30°F

Blended with Chemically Stable Reverse Osmosis Water

Ready-To-Use – Just Pour In (Also Available in Clear)



OFFICIAL PERFORMANCE COOLANT

***Lower Temps.
More Power.***



THANK YOU



IMSA AIRBNB ENDURANCE CHALLENGE