

LAMBORGHINI SUPER TROFEO

INDIANAPOLIS

TEAM MANAGER MEETING



SQUADRA CORSE

SERIES CONTACTS



Erik Skirmants	Senior Manager Motorsport	(571) 240-8193
Angelo Dinkov	Motorsport Operations	(571) 352-5570
Jason Young	Senior Specialist Super Trofeo	(404) 285-1296
Craig Jamison	Parts Support	(248) 943-7343
Andrew Bosscher	Engineering Support	(586) 709-8812
Rachel Crawford	Hospitality Coordinator	(248) 935-9609
Danny Van Dongen	Hankook Motorsports USA	(305) 809-0356

Todd Snyder	Race Director	(860) 248-9115
Duane Sampson	Director, Single Make	(386) 285-7021
Austin Farr	Coordinator, Single Make	(386) 293-1702
Cory Posocco	Logistics & Event Ops	(386) 566-8313
Holly Langer	Paddock Layout	(386) 871-0241
Scott Ellison	Technical	(734) 621-9130
Johnny Knotts	Pit Lane Supervisor	(813) 763-4669
Carol Mueller	Administration	(386) 262-8932
David Pees	Timing & Scoring	(386) 308-8866
Ryan McLean	Medical Liaison	(386) 285-6913
Roy Spielmann	Track Services	(414) 702-0905
Robert Bosworth	Safety & Security	(704) 728-8087

IMSA RESOURCES

IMSA COMPETITOR LANDING PAGE:

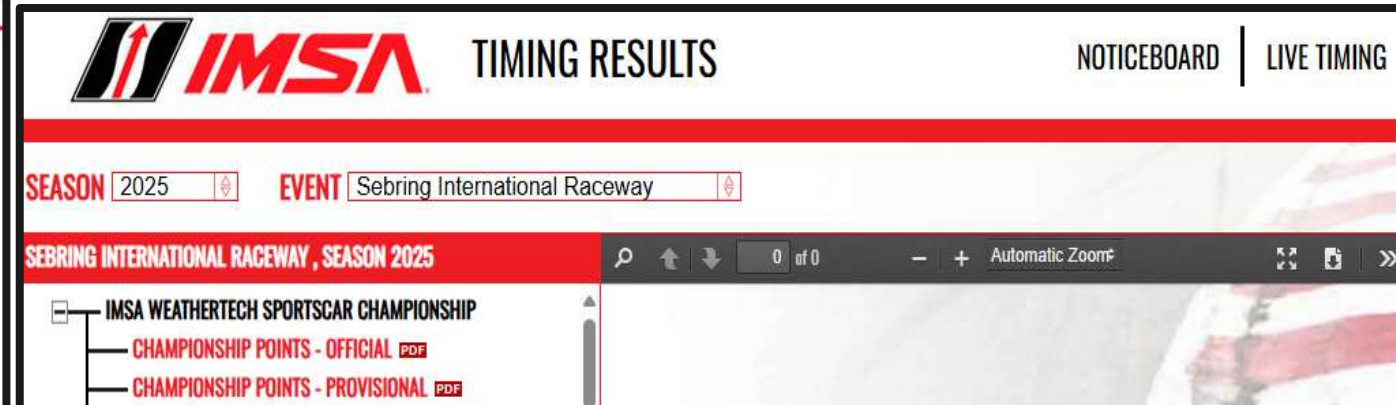
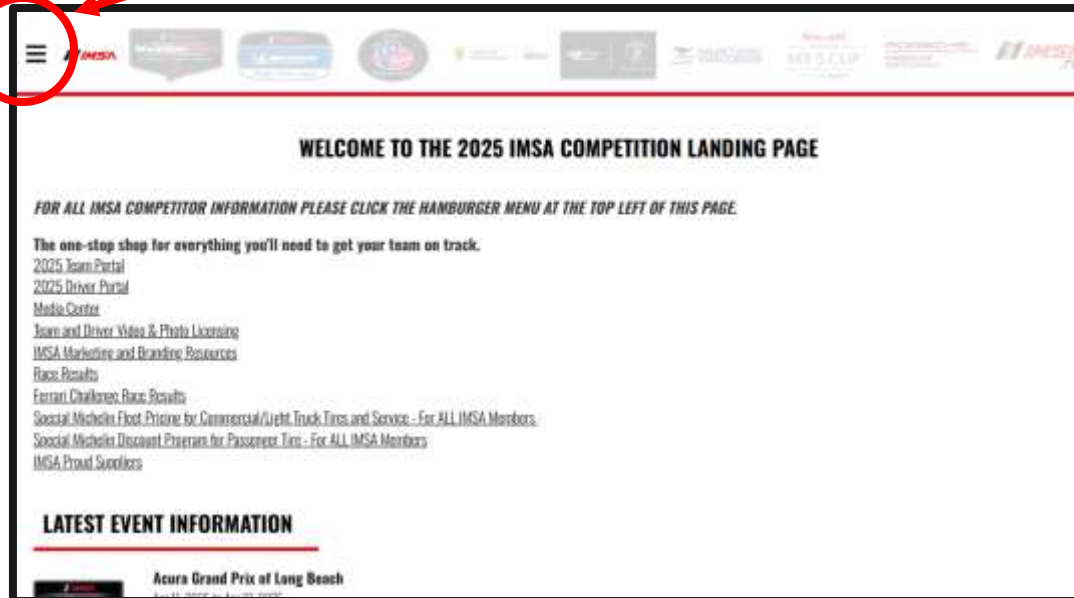
<https://www.imsa.com/competitors/>

- Team Portal
- Event Information
- Rules & Regulations
- Marketing & Branding Page
- All Event Schedules published

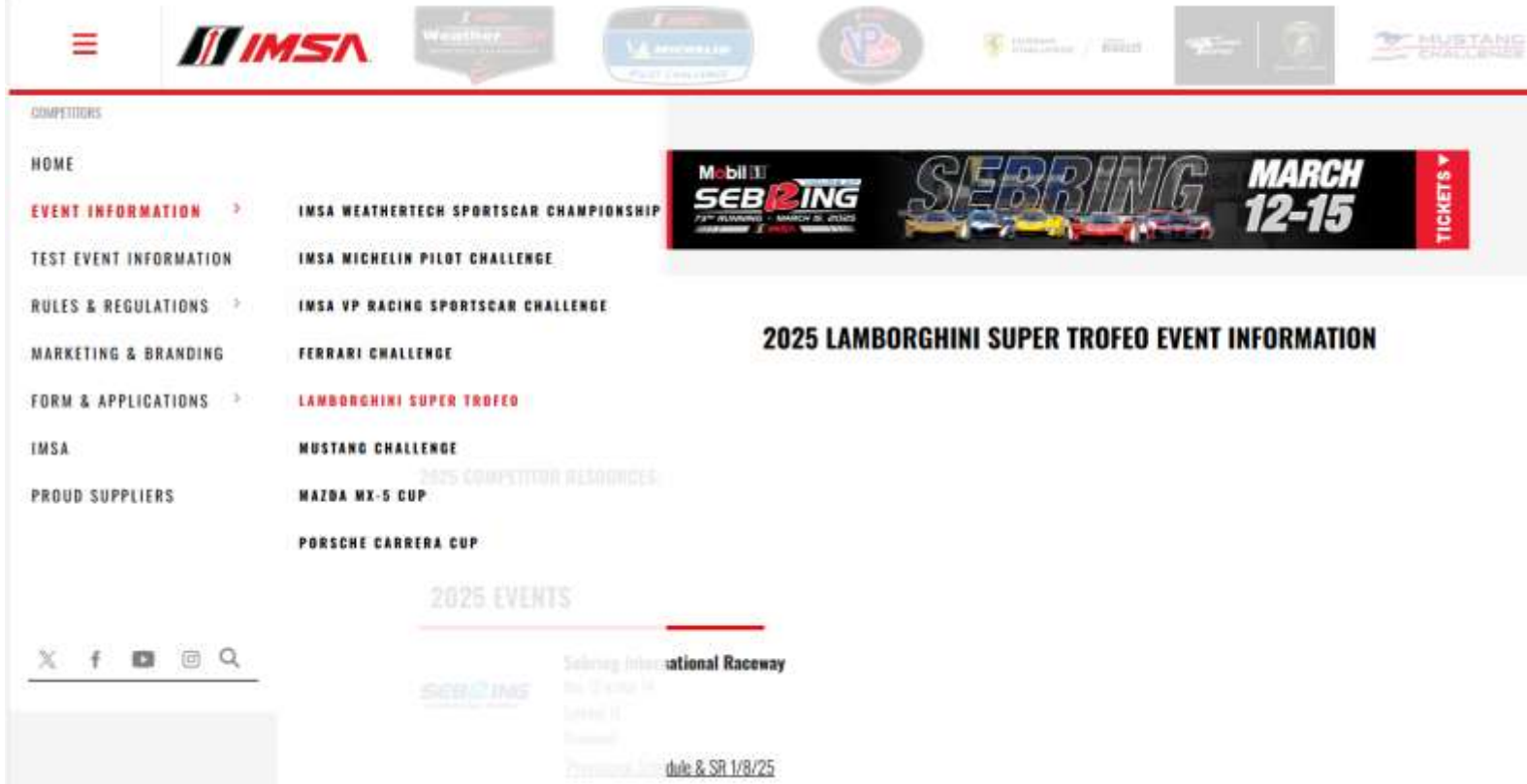
IMSA NOTICE BOARD:

<http://results.imsa.com/>

- Driver & TM Briefings
- Entry Lists
- Minute by Minute
- Timing Results
- Penalties



LST EVENT INFORMATION

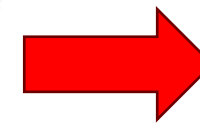


2025 COMPETITOR RESOURCES:

[2025 LST Electronics Ordering](#)

[2025 LST Brand Guidelines](#)

[2025 LST Brochure](#)



2025 EVENTS



Indianapolis Motor Speedway

Sep 18 to Sep 20

Indianapolis, IN

Download:

[Provisional Schedule & SR 8/27/25](#)

» TO IMSA REGISTRATION



Directions

1. Enter IMS Administration Building (red shaded area) lot off W 16th St
2. Follow signage to IMSA Registration on 1st Floor

Notes

- Address: 4790 W 16th St, Indianapolis, IN
- Refer to Official Schedule / SR for Registration hours of operation



» IMSA HANGTAG PARKING (LOT N)



Directions

1. Take W 16th Street to South Chute Tunnel (Gate 2)
2. Turn left at Museum (Guard Shack) and proceed down Hulman Blvd
3. Turn left onto 6th Street and slight right onto Foyt Drive
4. Proceed to IMSA Hangtag Parking (blue shaded area)

Notes

- IMSA Annual Hangtag and proper credentials required for facility entry
- Left turns into Gate 2 will **not** be allowed; plan to enter from East (right turn)



» IMSA HANGTAG OVERFLOW PARKING (LOT 3P)



Directions

1. Take W 16th Street to IMSA Hangtag Overflow Parking (green shaded area)

Notes

- IMSA Annual Hangtag and proper credentials required for facility entry



» TRACK MEETING ROOM LOCATION



Notes

- Track Meeting Room located in IMS Pavilion #1
 - Enter through IMS Plaza
- Proper credentials required for paddock entry
- See Official Schedule / SR for Series-Specific Briefing times



» CARE CENTER LOCATION



Notes

- Care Center located at corner of Hulman Blvd and 5th St
- See Official Schedule / SR for Care Center Hours of operation



PADDOCK/GOLF CART PASSES – IMSA

Annual Paddock and Pit Lane Golf Cart / Tugger passes for 2025.

- **LST** Teams are permitted **one (1)** support vehicle (golf carts) in the Paddock area per entered Car.
- **LST** Teams are permitted **one (1)** support vehicle (golf carts) in the Pit Lane area per entered Car.
- **A Team must return a previously issued Annual pass to obtain a replacement.**
 - See Carol Mueller in the WeatherTech Tech Trailer.
- IMSA ADA Golf Cart passes - permits access during restricted Track Walks.
 - Available from IMSA Registration as appropriate with proof of ADA.

Improper use and/or falsification of any credential, parking pass and/or access pass is prohibited. Penalty: minimum \$5,000 fine and suspension or revocation of Membership and/or any other penalty available per Art. 57.

Paddock/GOLF CART PASSES - TRACK

- All Paddock/Pit vehicles must be registered and receive a permit from Indianapolis Motor Speedway to operate on IMS property and must submit a compliant certificate of insurance.
 - Can be picked up from IMSA Registration.
 - Unregistered vehicles are subject to impound and towing.
 - Pit/Paddock Vehicle form available at [IndianapolisMotorSpeedway.com](https://www.indianapolis motorspeedway.com).
- For questions, Alex Smith at asmith@brickyard.com.



Paddock

**PROHIBITED:
ANY ONE, TWO OR
THREE-WHEEL FORM OF
TRANSPORTATION**

**ONLY PROPERLY
PERMITTED VEHICLES ACCEPTED
EXCEPTIONS FOR VESTED MEDIA
AND ADA TRANSPORT**

Motorcycles, drones, bicycles, skateboards, rollerblades and other non-motorized transportation, as well as motor scooters of one, two or three-wheels and/or designed to transport one or two persons, are prohibited in the garage, pit and/or Paddock areas except authorized power-driven mobility devices (ADA requirements - Americans with Disabilities Act), and accredited and vested media personnel.

Pit vehicles must only be operated by an IMSA credential holder. Motorized carts and similar 3- or 4-wheeled conveyances must not be driven into pit lane except pit equipment approved for a Series or as specified in the SR.

Such use in the Paddock must be for legitimate purposes only.

Excessive speed and/or unsafe operation is prohibited. Participants must abide by state laws and Promoter restrictions regarding licensing, maximum speed, helmet requirement and use.

Such conveyances may be prohibited at certain Events or in certain areas of each facility by local ordinance or Promoter limitation.

Paddock/Pit Lane Operations

- Driving in the Paddock deemed dangerous, erratic, of inappropriately excessive speed for the circumstances or established limits and/or in violation of the RULES is prohibited and subject to penalty.
 - Cars must only be driven/operated by an IMSA credentialed Driver or Crew Member. Passengers and/or loose exterior materials prohibited.



IMSA SEVERE WEATHER PLAN

- IMSA uses the DTN Weather Service with Lightning Detection.
- Notifications are sent (as in past years). All messages will start with "IMSA MESSAGE":
 - Within 30 miles of the track – Advisory message sent for informational purposes.
 - Within 20 miles of the track – Cautionary message sent to increase awareness and trigger protective actions for personnel and equipment.
 - Within 8 miles of the track – Full-Stop message sent for personnel to stop all activities and seek shelter due to potentially dangerous conditions.
 - IMSA continues to send periodic updates through the messaging service while on-track activities are under a “full-stop”.
 - When severe weather has moved out of the area, an “all-clear” message is transmitted.

IMSA uses an internal messaging service. Text messages are sent to all credentialed attendees for an Event. There is no need to provide a recipient list.

ACCESSING EMERGENCY SERVICES

For EMS (Emergency)

- During hours of operations (daytime), proceed to the Infield Care Center or call 911 if patient is not moveable.
- Report need for EMS to IMS Track Rescue (red trucks), IMS Safety Patrol (yellow shirts) or medical cart if on pit lane.

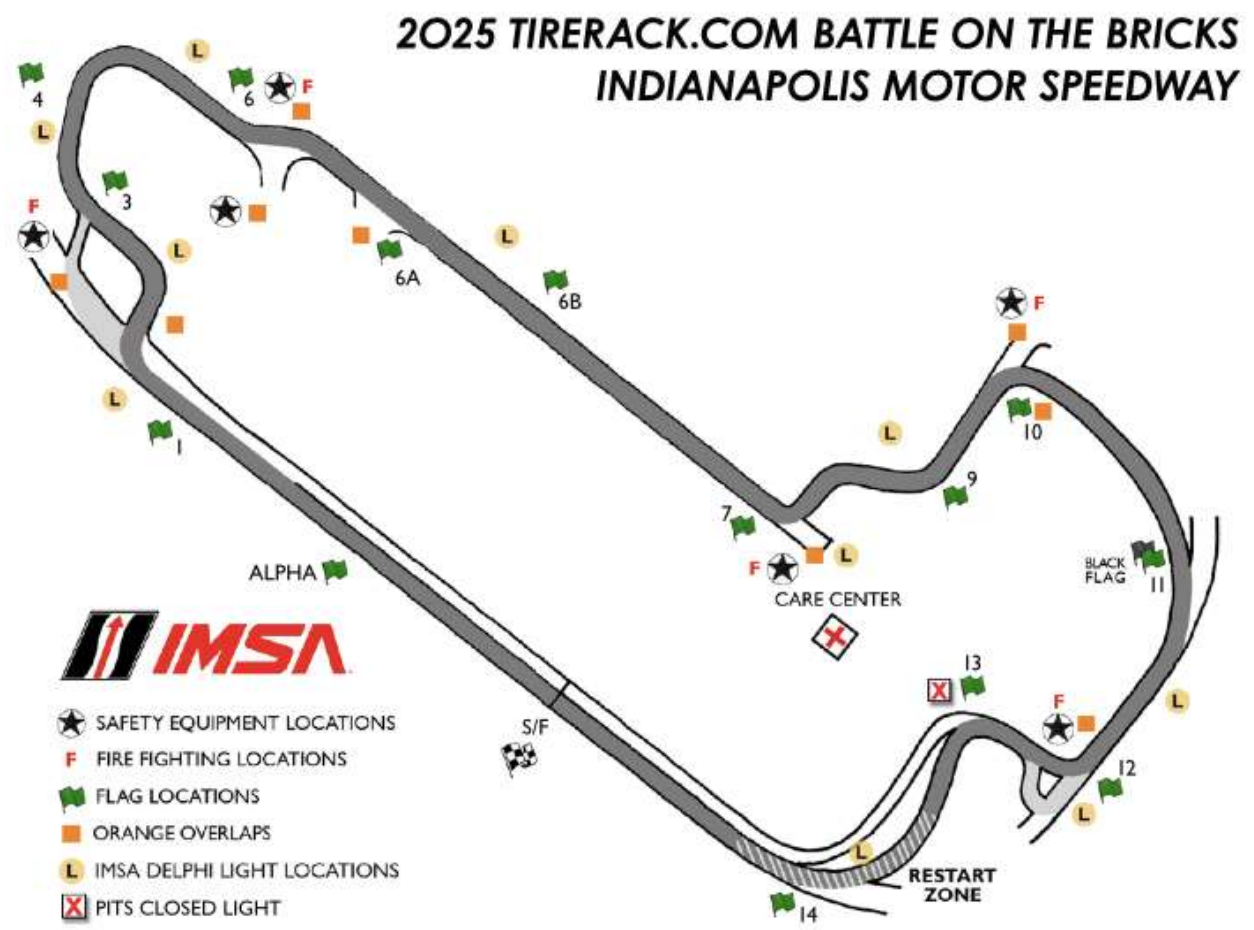
For EMS (Non-Emergency)

- Call Pagoda Command (24-hrs per day) at (317) 492-5500 or Jason Penix at (317) 306-9133

For Law Enforcement & Fire Department (Emergency & Non-Emergency)

- Call 911 and provide specific information regarding the need.
- Mike Bates (IMS Security) at (317) 903-6166 or Pagoda Command at (317) 492-5500.

TRACK MAP



» TO FALSE GRID, PIT LANE | LST PADDOCK



Directions

1. Exit LST Paddock onto Foyt Drive and proceed through IMSA Transporter Parking area – use caution
2. Enter Garage Area and proceed around garages to False Grid, located at South end of Trackside Garage building
3. Enter Racecourse via South Pit Gate
4. Proceed to Pit Lane
5. Proceed onto Racecourse



» TO LST PADDOCK

Directions

1. Exit Racecourse onto Pit Access Road. Proceed onto Pit Lane
2. Proceed through Pit Lane onto Racecourse
3. Turn Drivers' Right onto Unser Ln to exit Racecourse. Proceed to Meyer Dr
4. Proceed to assigned LST Paddock space



PIT LANE & SAFETY INSPECTIONS

- All pit boxes are 23.5 feet.
- Pit Lane Distance: 33,820 inches

OBLIGATORY PIT STOP TIME:

- 112 seconds - Two, (2) Drivers
- 115 seconds - Solo, (1) Driver

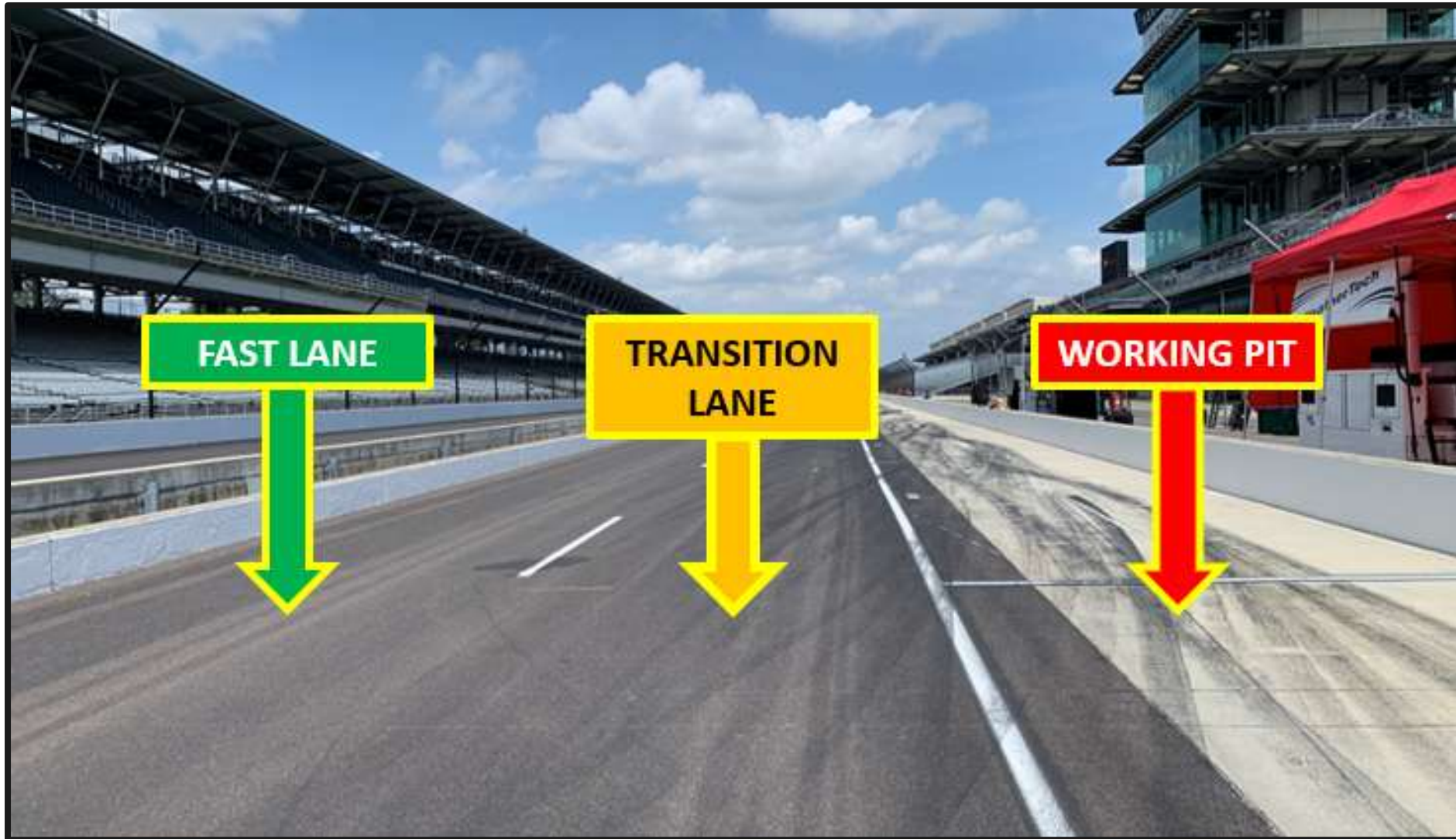
PIT LANE SUPPORT:

- Located at IMSA Timing Stand on Start/Finish or IMSATIMING@IMSA.COM

SAFETY INSPECTIONS:

- [Updated to Version 2](#)

PIT LANE PROTOCOL



PLSL ENDS / PENALTY BOX

PIT LANE SPEED LIMIT
ENDS AT GREEN PYLONS



PIT EXIT

STAY RIGHT OF SOLID
WHITE LINE



PIT EXIT MERGE

CARS EXITING THE PIT LANE MUST
REMAIN TWO WHEELS TO THE RIGHT OF
THE MERGE LINE PAST THE APEX OF
TURN 1

MERGE SAFELY AFTER TURN 1



TURN 1 RUNOFF & RE-ENTRY

CORRECT



INCORRECT



TRACK LIMITS – T6



TURN 7 - SHORTCUT



T12 RUNOFF

- DO NOT GO STRAIGHT AND CONTINUE THRU SPEEDWAY T1
- U-TURN AND MAKE SAFE RE-ENTRY IN TO T12
- ALTERNATIVELY USE THE MOTORCYCLE CHICANE TO MAKE A SAFE RE-ENTRY



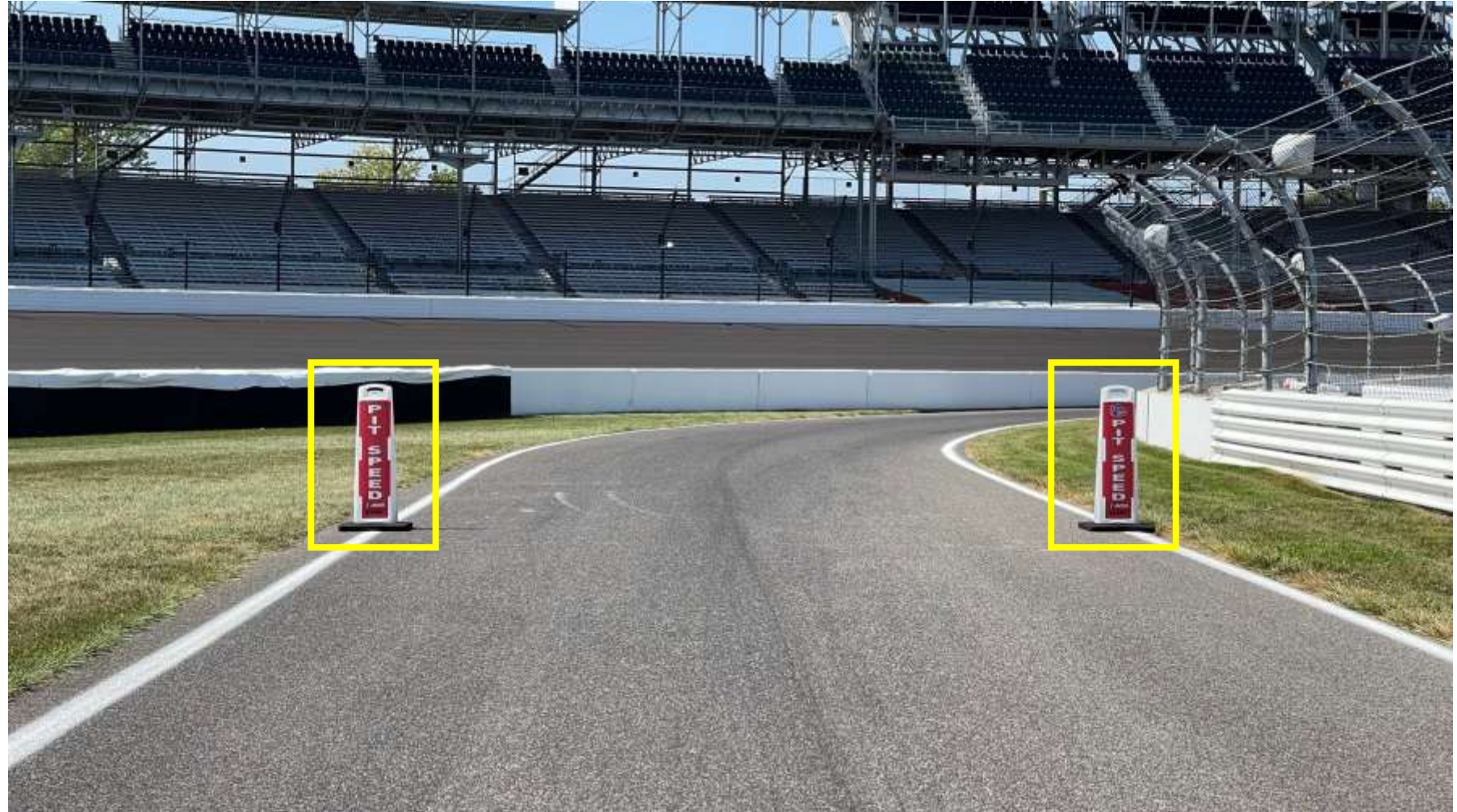
PIT IN / PIT COMMIT

- DECELERATE OFFLINE FROM TURN 13
- PIT COMMIT – PART OF CAR HAS TO BE OVER THE WHITE DASHED LINE



PIT LANE SPEED LIMIT

Pit Lane speed limit begins at Red pylons.



ORANGE OVERLAPS



ORANGE OVERLAPS



IMSA TRACK SERVICES

IMSA CHASE VEHICLES

- Chase 1
- Chase 2
- Chase 3
- Chase 4

ON-TRACK ASSISTANCE

- Communication with Track Services Medic
- Neutral and power shut off
- Follow direction of on-scene Track Services personnel
- Maintain a safe speed and distance when passing on-track incidents with Track Services team members on the scene

Contact: Roy Spielmann 414.702.0905



REVISED QUALIFYING PROCEDURE

GOAL IS TO RELEASE CARS BY CLASS

- PRO CARS WILL BE ANNOUNCED TO LINE UP IN FAST LANE, **PRIOR** TO ANNOUNCEMENT OF GREEN FLAG
- 2nd ANNOUNCEMENT – GREEN FLAG, PRO AM CARS MAY RELEASE
- 3rd ANNOUNCEMENT – AM CARS MAY RELEASE
- 4th ANNOUNCEMENT – LB CUP CARS MAY RELEASE
- LISTEN AND FOLLOW INSTRUCTIONS ON RC FREQUENCY

SUPER TROFEO NORTH AMERICA

RACE BRIEFING FRIDAY AT 8:30am



SQUADRA CORSE

LAMBORGHINI SUPER TROFEO

INDIANAPOLIS

RACE MEETING



SQUADRA CORSE

REVISED QUALIFYING PROCEDURE

GOAL IS TO RELEASE CARS BY CLASS

- PRO CARS WILL BE ANNOUNCED TO LINE UP IN FAST LANE, **PRIOR** TO ANNOUNCEMENT OF GREEN FLAG
- 2nd ANNOUNCEMENT – GREEN FLAG, PRO AM CARS MAY RELEASE
- 3rd ANNOUNCEMENT – AM CARS MAY RELEASE
- 4th ANNOUNCEMENT – LB CUP CARS MAY RELEASE
- LISTEN AND FOLLOW INSTRUCTIONS ON RC FREQUENCY

PRE-RACE PROCEDURES

- REFER TO MxM

RACE START

- TWO (2) FORMATION LAPS
- CLOCK WILL START AT THE END OF THE FIRST FORMATION LAP
- PACK UP FROM T7 to T10, PAIR UP T10 TO T13
- STAY WITH SAFETY CAR
- SAFETY CAR ENTERS PITS
- POLESITTER TO MAINTAIN CONSTANT SPEED UNTIL DISPLAY OF GREEN FLAG
- NO CROWDING – EACH COLUMN JUST OFF THE CENTER LINE
 - Pole sitter remain after meeting
- JUMP/FALSE START REVIEWS
 - GAPS
 - TIMED/EARLY ACCELERATION
 - OUT OF LINE
 - COLUMN PASSING

LST R2 INDY 2024 START



TURN 1 RUNOFF

CORRECT



INCORRECT



T1 SHORTCUT

- APPLIES TO T7 & T12



PIT STOP

MINIMUM TIME PIT IN LOOP TO PIT OUT LOOP

- TWO DRIVERS = 112 SECONDS
- SOLO DRIVER = 115 SECONDS

PIT DISTANCE IS 33,820 INCHES

- DRIVER MUST CHANGE DRIVER ID PLUG BEFORE LEAVING PIT EXIT OR IT WILL NOT REGISTER. INCORRECT DRIVER ID MAY RESULT IN A DRIVE THROUGH TO RECTIFY
- DRIVING SLOWER THAN 60kph IN THE FAST LANE MAY BE PENALIZED
- TRANSITION LANE SHOULD BE USED IF LESS THAN 60kph TO NOT INTERFERE WITH CARS IN THE FAST LANE

FULL COURSE YELLOW

Race control radio, in-car lights, trackside lights, double yellow flags displayed

Safety VEHICLES may begin to move as soon as FCY is ANNOUNCED

Leader to safety car speed, all cars pack up – respect the area of incident/Track Services personnel

- Safety Car dispatches from pit exit
- RC instructions regarding track condition over radio

Lights out by turn 11

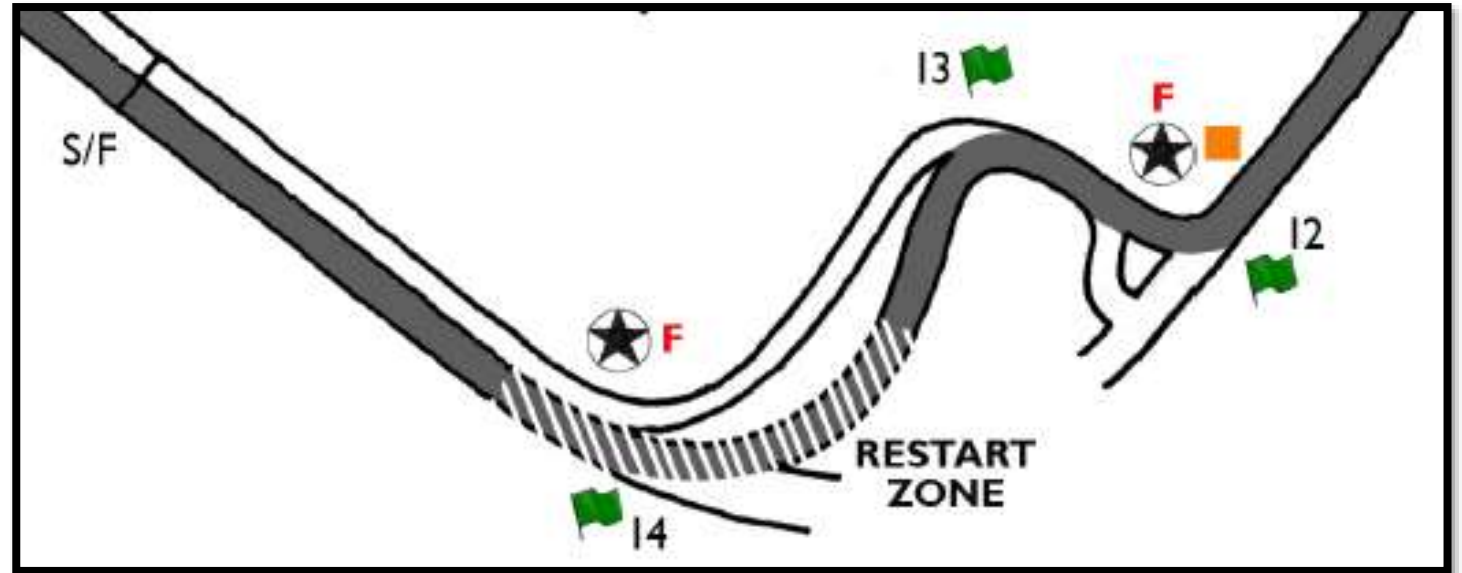
- Maintain SC speed, let SC get away, *no more tire scrubbing*

RESTART ACCELERATION ZONE

RESTART ACCELERATION ZONE IS
TURN 14

SINGLE FILE RESTART

PASSING MAY OCCUR WHEN THE
GREEN FLAG IS DISPLAYED



ON TRACK

- **LOCAL YELLOWS**
 - No passing
 - Slow to a safe speed
- **BLOCKING / DEFENDING INCREASE RESPONSIBILITY**
 - Proactive vs. Reactive
 - Race how you would like to be raced
- **COEXISTENCE – MULTI CLASS RACING**
 - Awareness
 - Coexist
 - Blue Flags / Car being passed be consistent!

IMSA MESSAGING TO DRIVERS

- **Road America Recap.**
- We saw far too many incidents across multiple classes & series.
- Many were not caused by racing hard, but by a lack of respect on track.
- This is not the standard IMSA expects. We are committed to fair, safe, and respectful racing and that requires every driver in this paddock to take responsibility.”
- **Driving standards have deteriorated to a level that will not be tolerated going forward.**

REGULATION REMINDERS FROM IMSA

30.2. DRIVER CONDUCT

30.2.1. **PASSING.** It is the responsibility of both the overtaking Driver and the Driver being overtaken to assure safe overtaking. Where two Cars are reasonably alongside each other, each must permit the other racing room. A Car traveling alone may use the full width of the racetrack. Overtaking may be either right or left depending on prevailing conditions.

30.2.2. **BLOCKING.** Any Driver who, in the sole opinion of the Race Director, moves in reaction, altering their line based on the actions of pursuing Competitors, may be warned or penalized pursuant to Art. 57 of the RULES, and such decision is Conclusive.

30.2.3. **INCIDENTS.** Any Driver who, in the sole opinion of the Race Director, is responsible for: an incident where a Car spins, or goes off-track, or suffers a flat tire or other mechanical difficulty resulting from the incident and requiring it to pit directly for repairs, or an incident of contact resulting in a change of position, may be warned or penalized pursuant to Art. 57 of the RULES, and such decision is Conclusive.

30.2.4. **UNJUSTIFIABLE RISK.** Any Competitor who, in the sole opinion of the Race Director, engages in any behavior deemed to represent an unjustifiable risk or reckless endangerment may be warned or penalized pursuant to Art. 57 of the RULES, and such decision is Conclusive.

BAD JUDGEMENT



BAD JUDGEMENT

IMSA
LAMBORGHINI SUPER TROFEO
45:58

ROAD AMERICA - RACE 1

PRO

1	1	FORMAL	
2	29	BAMBER	-0.894
3	22	HUFFAKER	-2.777
4	58	PORTO	-3.590

PRO-AM

1	69	HINDMAN	
2	67	HART	-0.695
3	11	TRINKA	-2.695
4	41	MILLER	-3.911

AM

1	48	STAAB	
2	2	HEPWORTH	-1.458
3	70	NEULS	-2.274
4	46	CARAZO	-2.631

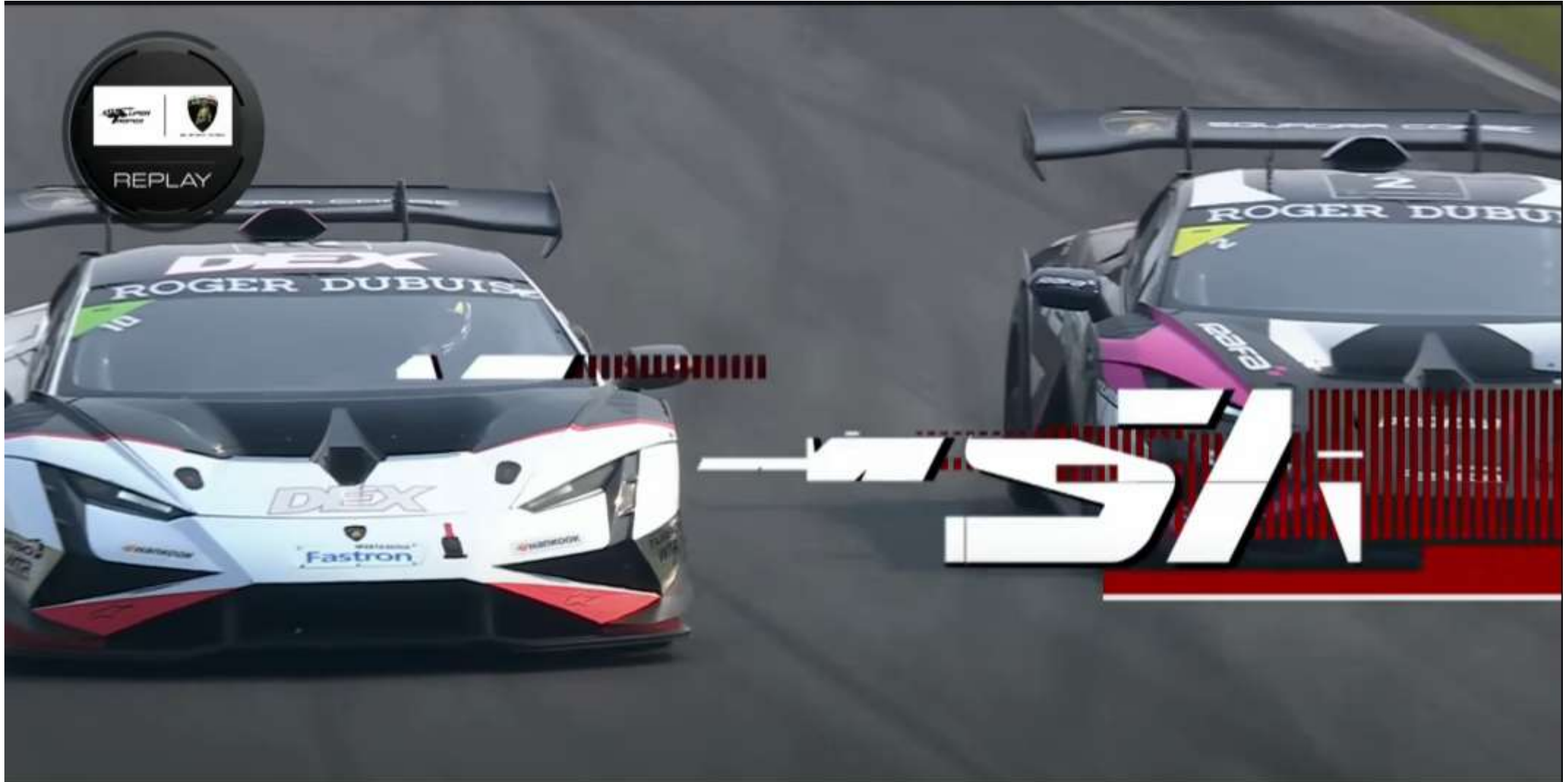
LB CUP

1	57	GROAT	
2	65	SHAH	-2.162
3	52	BRUMMOND	-2.312
4	86	HIRSHBERG	-3.332

Hankook
driving emotion

WeatherTech

RESPECTFUL / GOOD JUDGEMENT



INCIDENT REVIEW PROCESS

Race Control will announce any incident to be reviewed DURING the Race

- If a driver or team feels an incident needs to be reviewed, it **MUST** be communicated to Race Control before the Checker Flag
 - Last Lap Exception
- Communicate to Pit Lane staff to relay to Race Control
 - Location
 - Time and/or Lap
 - Car Number(s) involved

LAMBORGHINI SUPER TROFEO

INDIANAPOLIS

RACE MEETING



SQUADRA CORSE