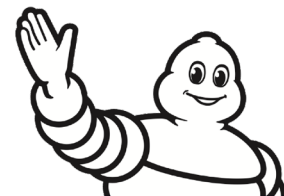




2025 EVENT MAPS



MICHELIN

GT CHALLENGE @



» TO IMSA TRANSPORTER STAGING

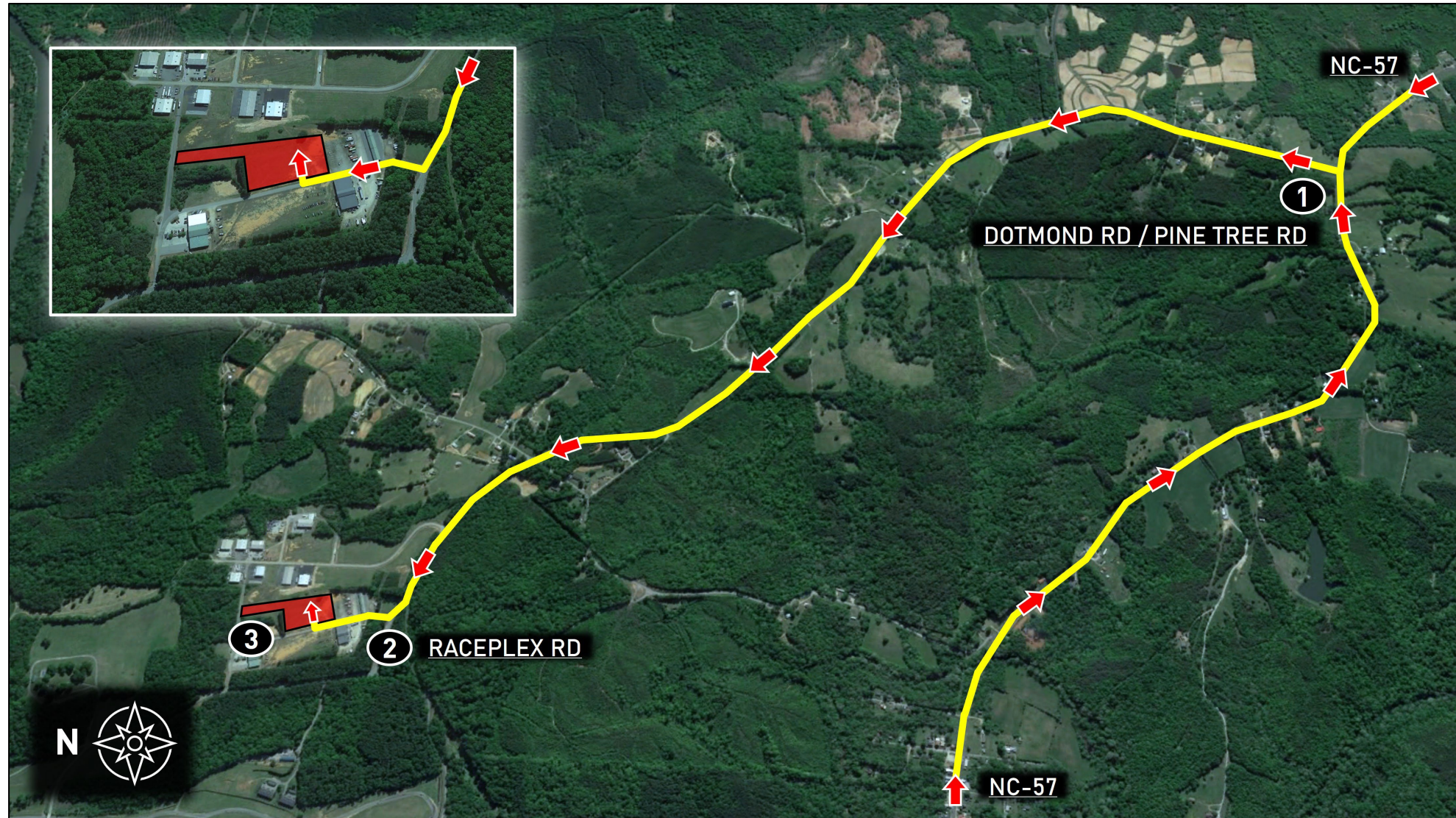


Directions

1. Take NC-57 to Dotmond Rd (Pine Tree Rd)
2. Continue on Dotmond Rd (Pine Tree Rd) into VIR facility. Turn right on Raceplex Rd
3. Proceed to IMSA Transporter Staging (red shaded area; see inset photo)

Notes

- Pre-Staging and Staging will be available at-track
- Refer to Official Schedule / SR for detailed Staging and Load-In times



» STAGING TO IMSA PADDOCK

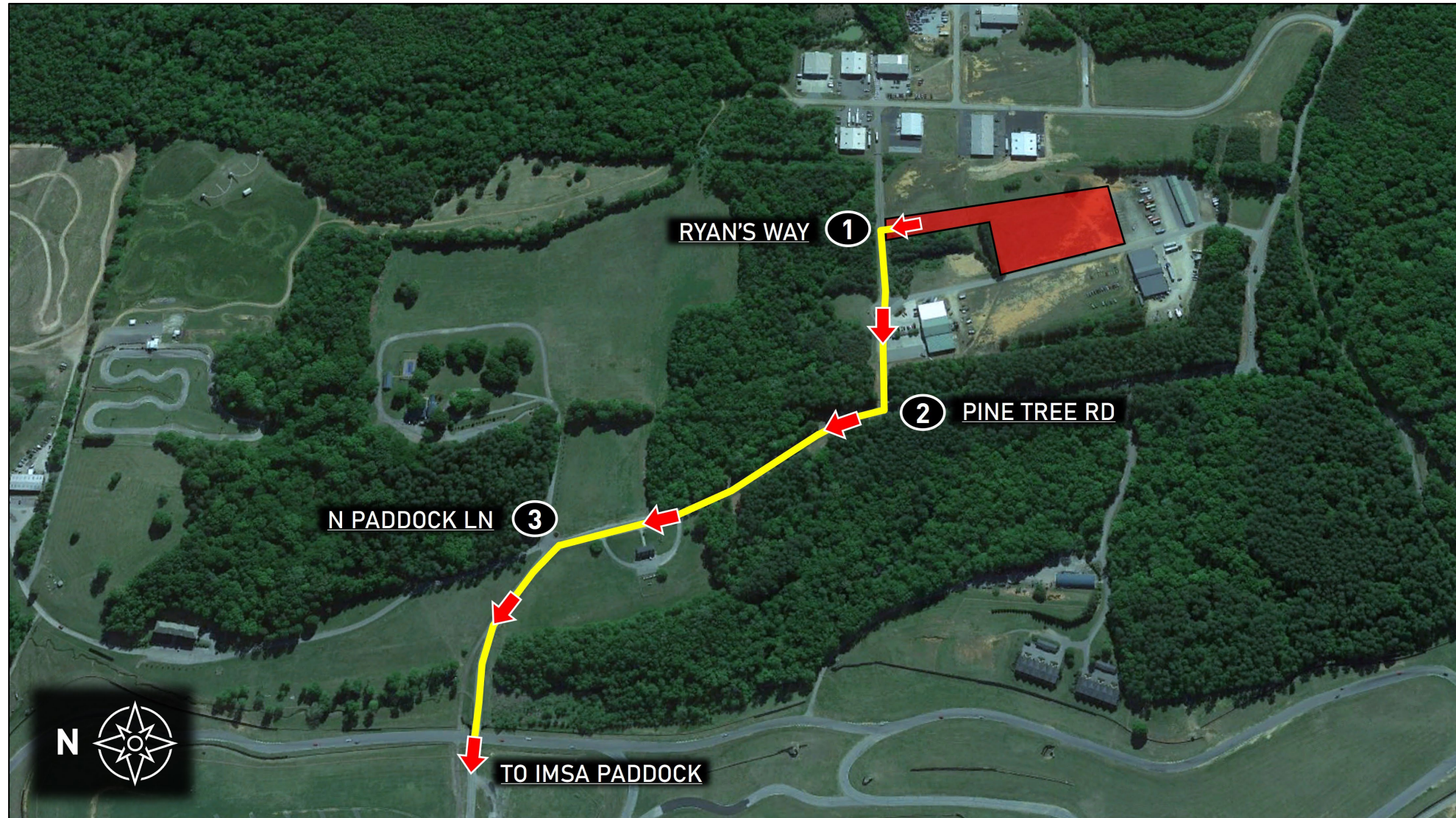


Directions

1. Exit IMSA Transporter Staging and turn left onto Ryan's Way
2. Turn right onto Pine Tree Rd
3. Turn left (downhill) on N Paddock Ln and proceed to IMSA Paddock

Notes

- Follow route at all times
- Refer to Official Schedule / SR for detailed Staging and Load-In times



» TO IMSA REGISTRATION

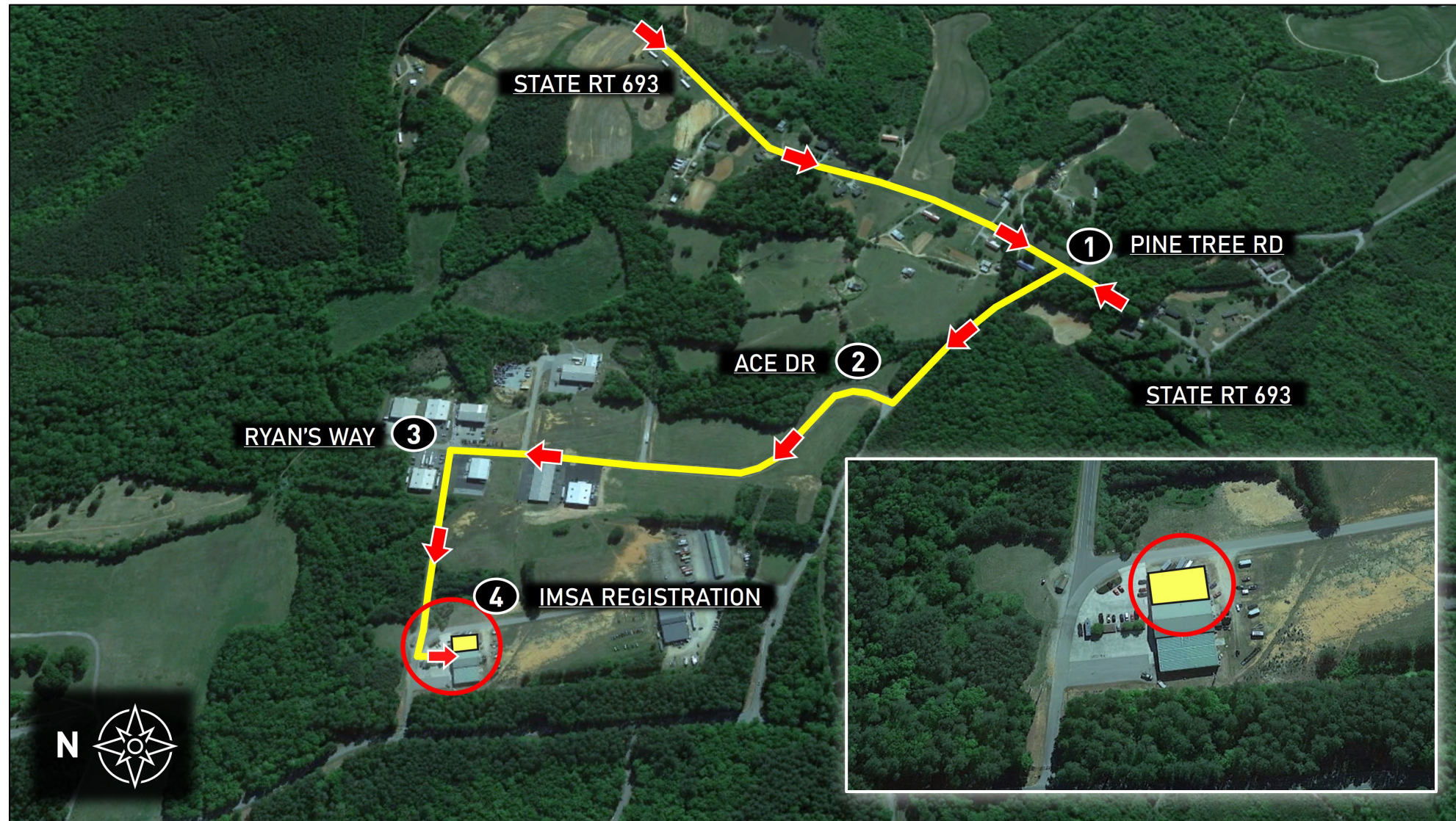


Directions

1. Take State Rt 693 to Pine Tree Rd
2. Turn right onto Ace Dr
3. Turn left onto Ryan's Way
4. Follow signage to IMSA Registration (yellow shaded area; see inset photo)

Notes

- Refer to Official Schedule / SR for Registration hours of operation



» TO IMSA PARKING

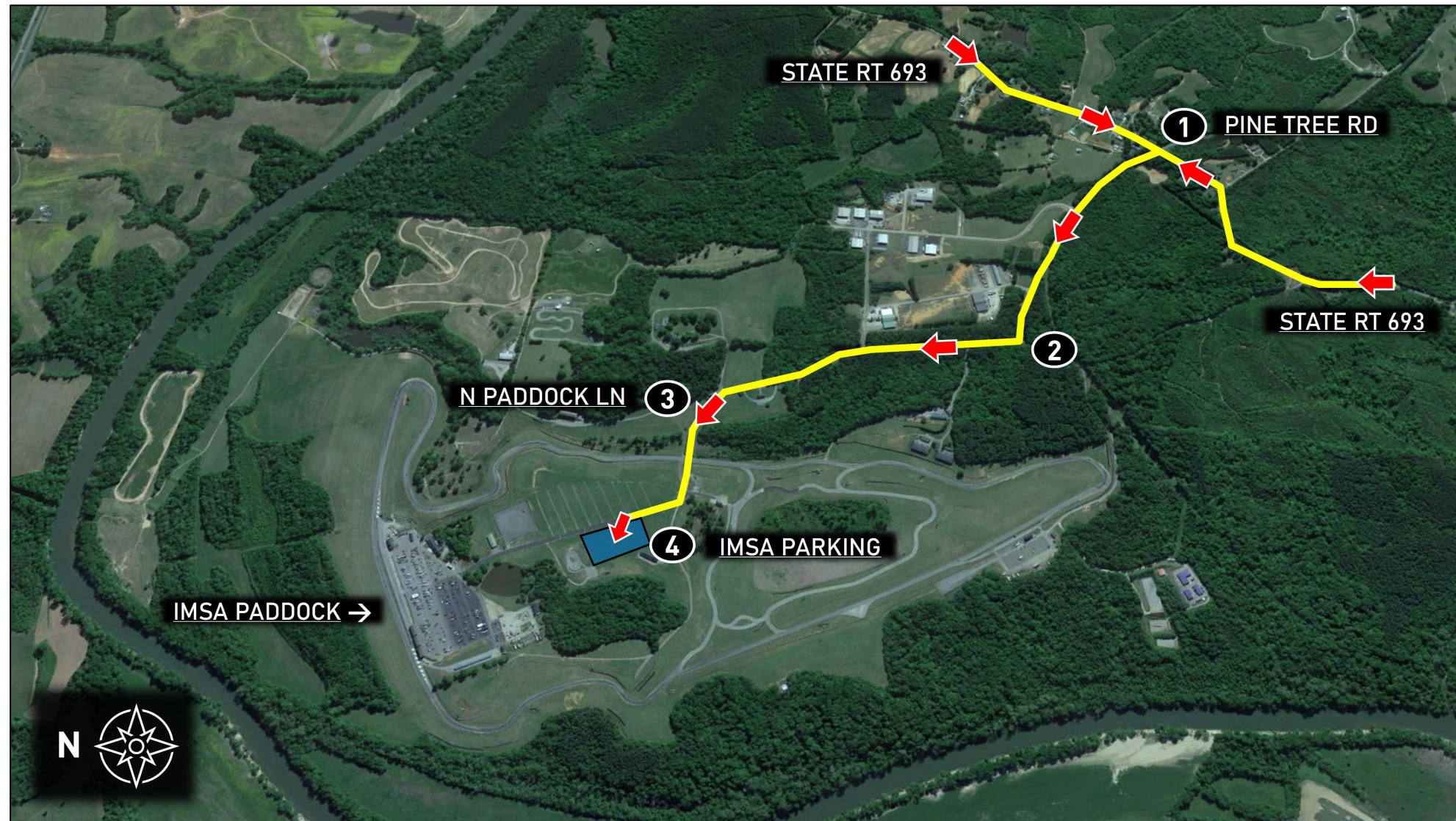


Directions

1. Take State Rt 693 to Pine Tree Rd
2. Pass through security checkpoint and turn right, continuing on Pine Tree Rd
3. Turn left (downhill) on N Paddock Ln
4. Proceed to IMSA Parking lot (blue shaded area)

Notes

- IMSA Annual Hangtag will be accepted for parking access
- Proper credentials required for facility entry

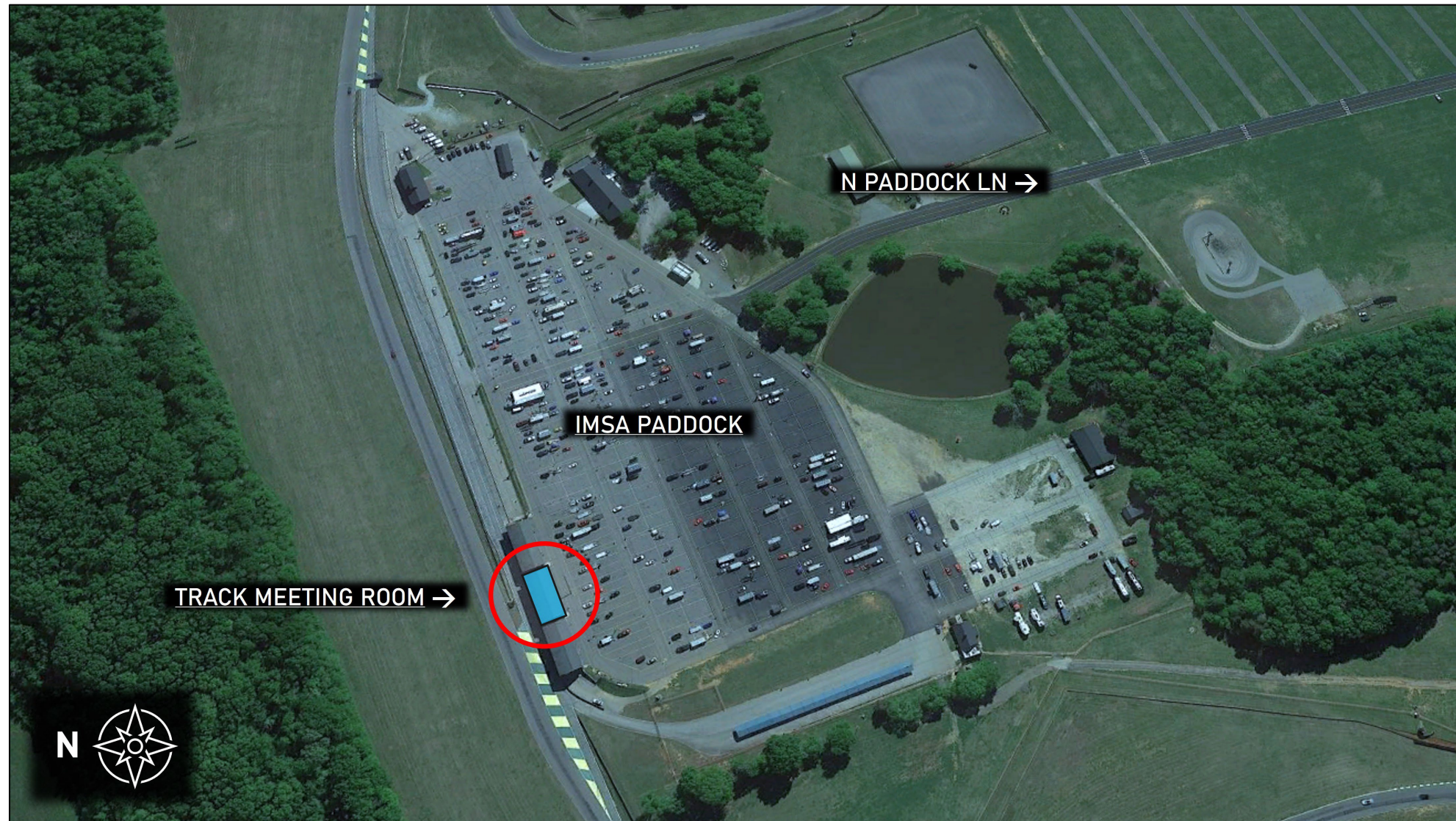


» TRACK MEETING ROOM LOCATION



Notes

- Briefings located in lower level of center trackside garage building (blue shaded area)
- Proper credentials required for paddock entry
- See Official Schedule / SR for Series-Specific Briefing times

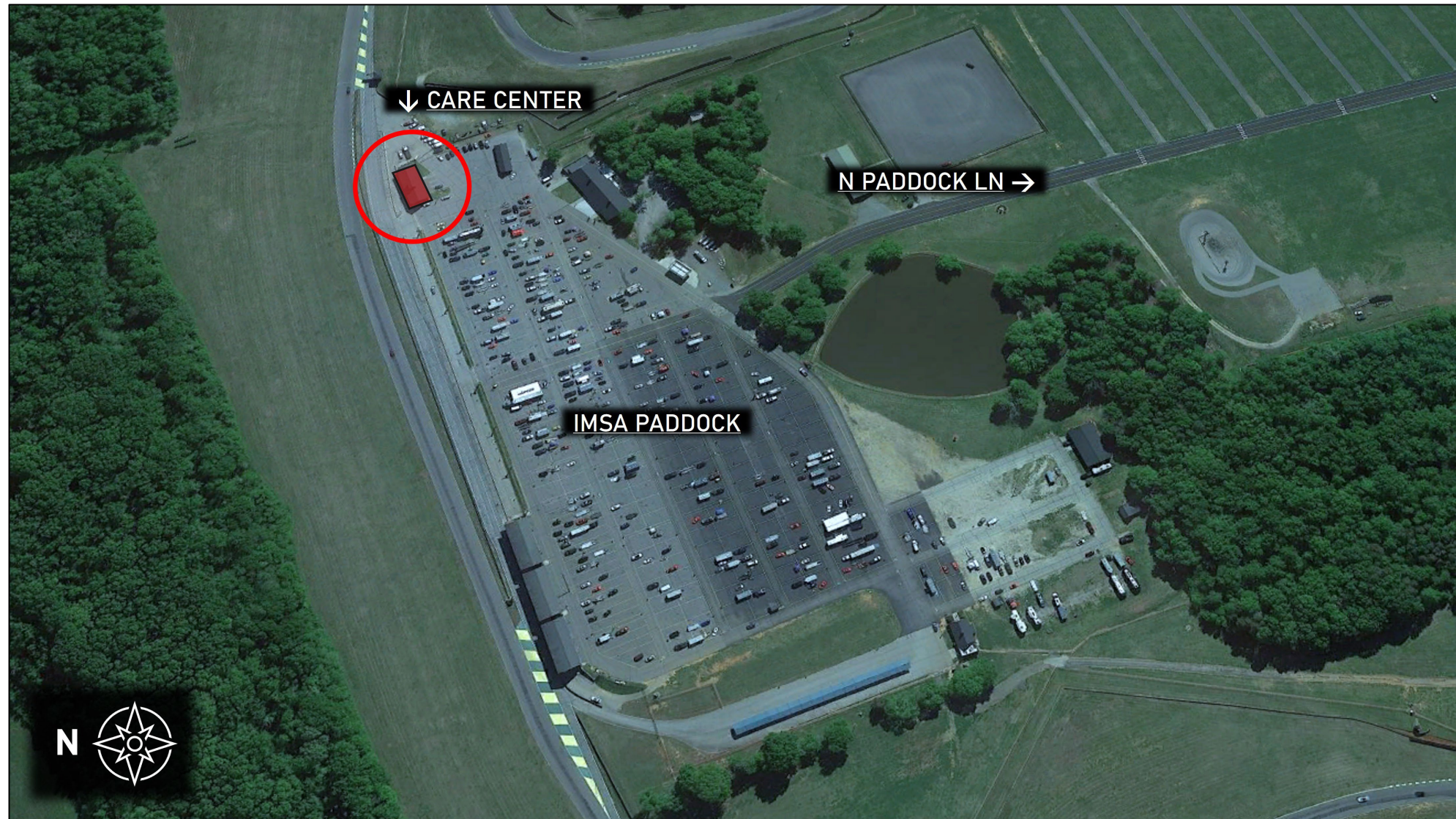


» CARE CENTER LOCATION



Notes

- Care Center located in structure at Pit Out
- See Official Schedule / SR for Care Center Hours of operation

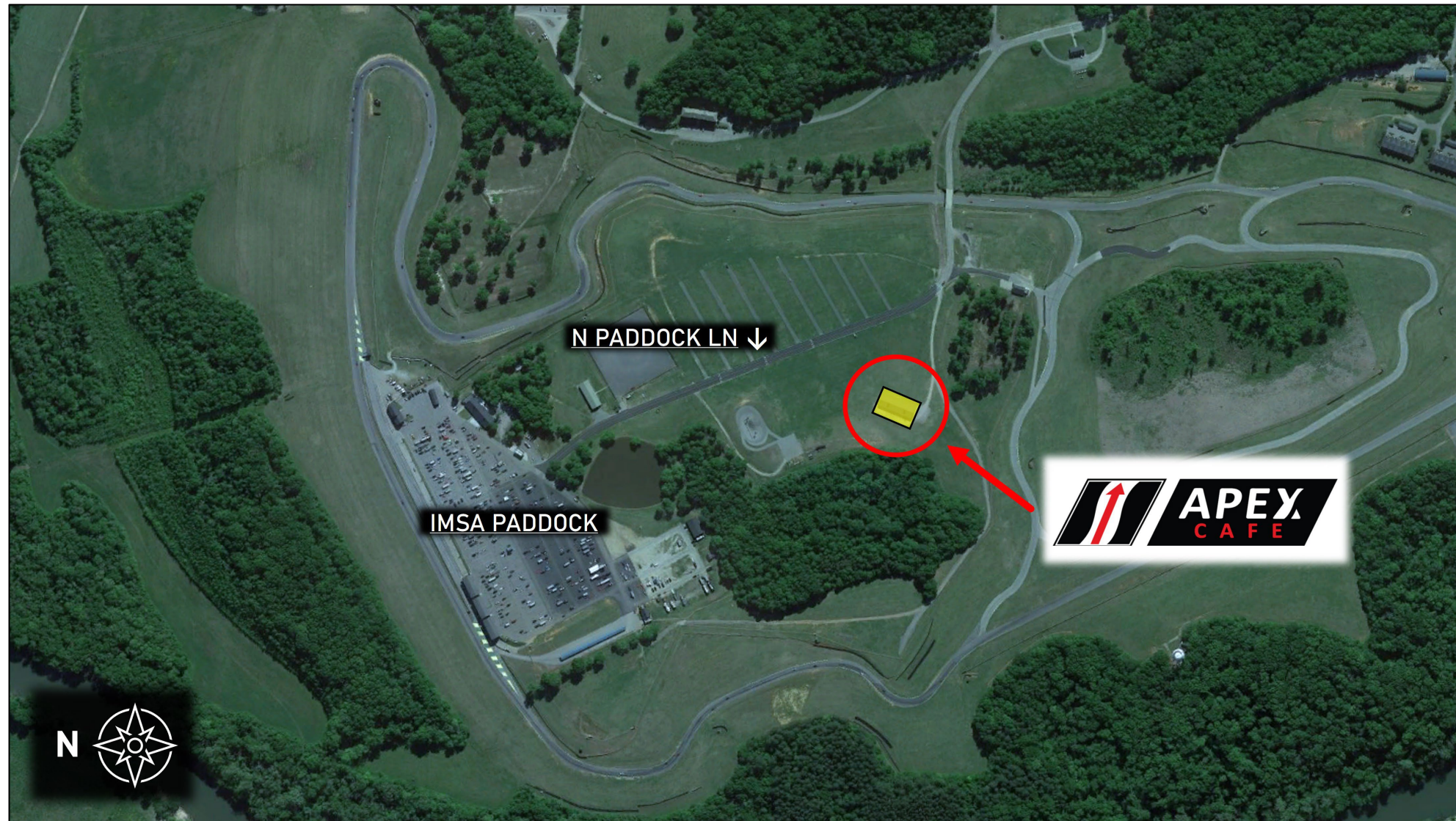


» APEX CAFÉ LOCATION



Notes

- Located in The Gallery hospitality area
- Race team catering provided by Scheper Event Group
- Contact Kaitlin Scheper for more information (contact info located in Official SR "General Event / Track Info" section #5)

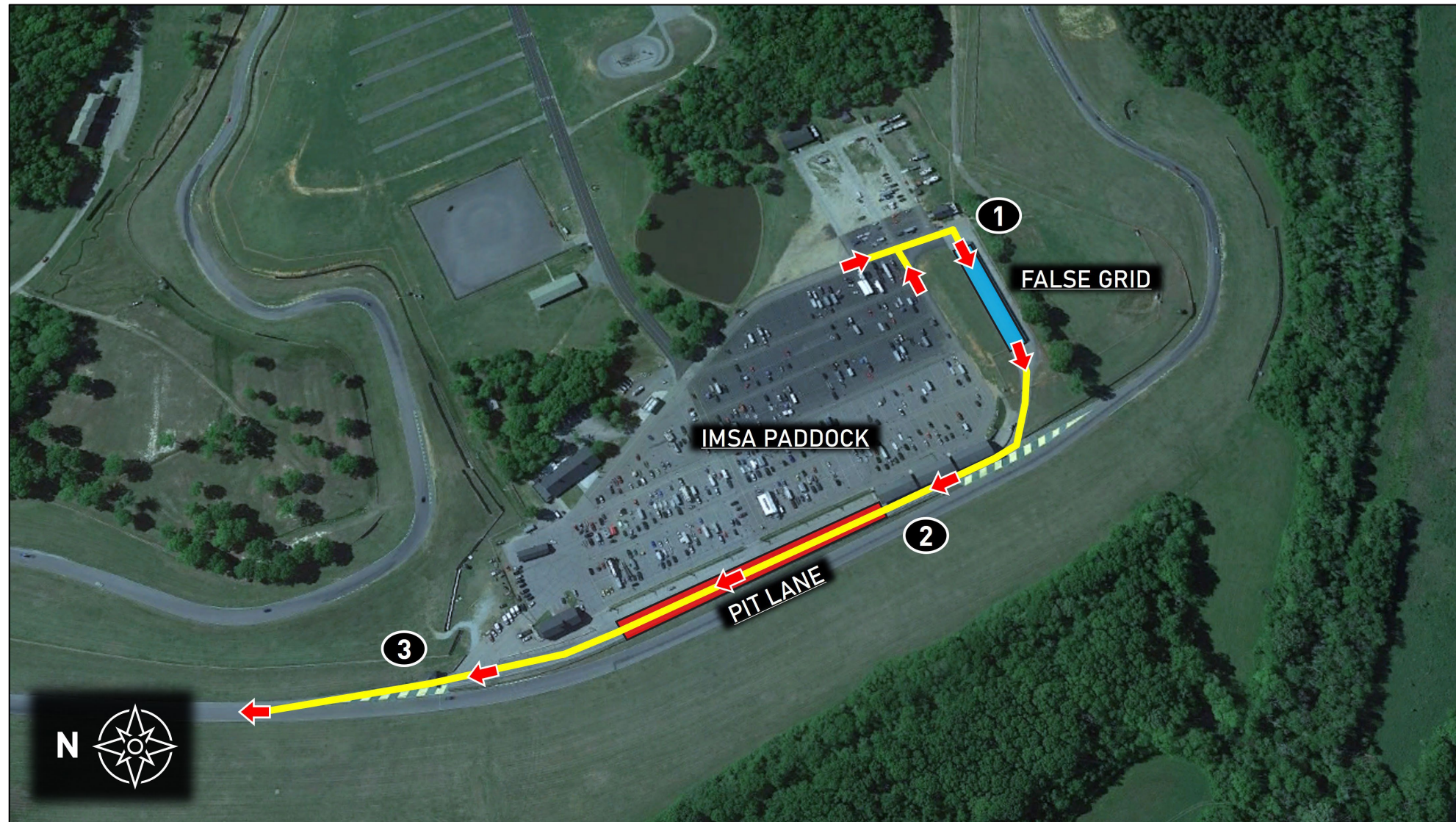


» TRAFFIC FLOW | TO FALSE GRID / PIT LANE



Directions

1. Proceed from Paddock to False Grid (blue shaded area)
2. Continue from False Grid to Pit Lane (red shaded area)
3. Enter Racecourse

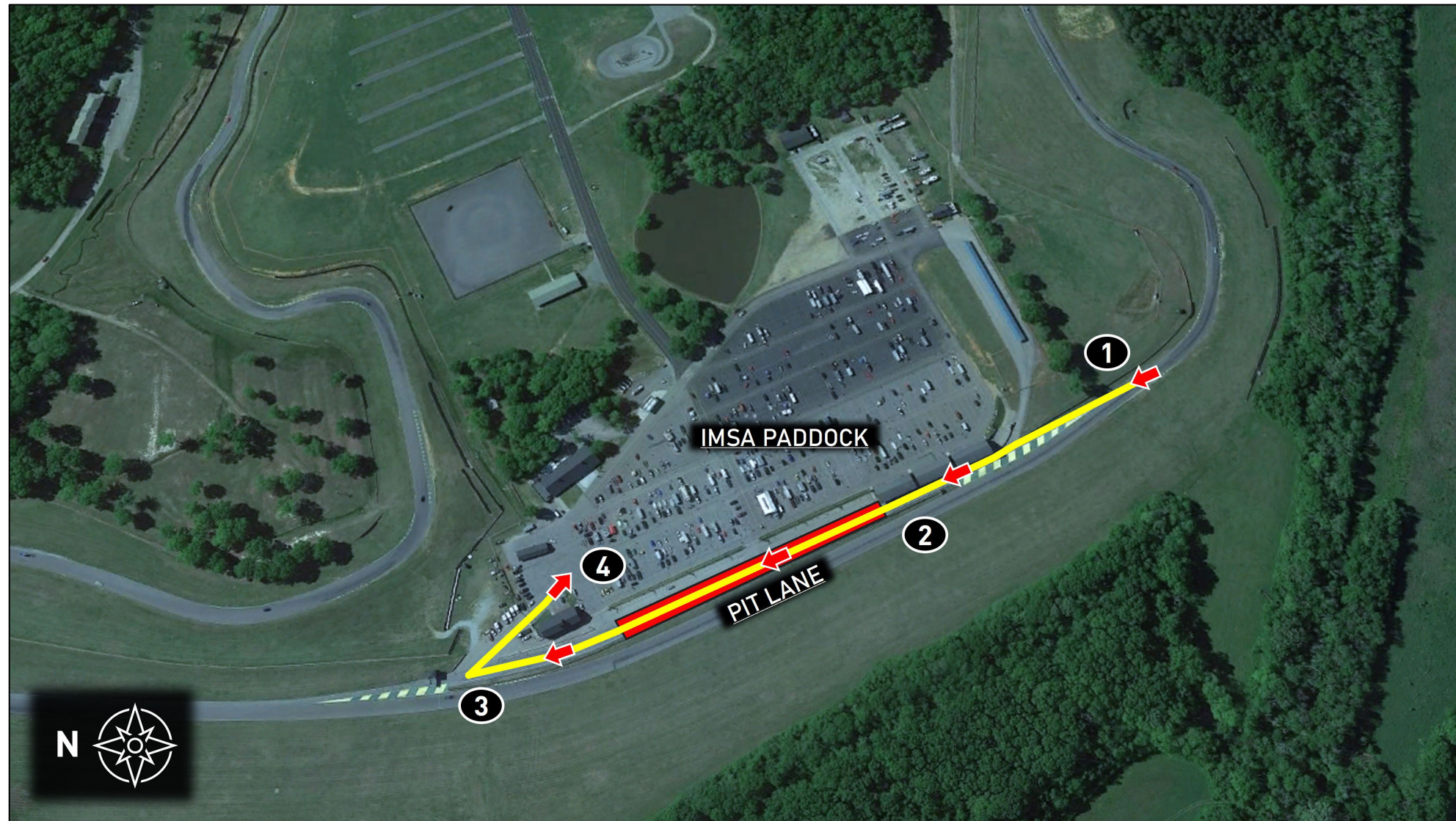


» TRAFFIC FLOW | TO PADDOCK



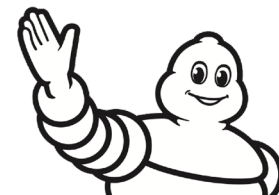
Directions

1. Exit Racecourse to Pit Lane
2. Proceed down Pit Lane
3. Exit Pit Lane drivers' right, before Flag Stand
4. Proceed to designated Paddock area





2025 EVENT MAPS



MICHELIN

GT CHALLENGE @

