

# PORSCHE CARRERA CUP NORTH AMERICA

## WATKINS GLEN

TEAM MANAGER BRIEFING

**PORSCHE**  

---

**CARRERA CUP**  
NORTH AMERICA

# SERIES CONTACTS



Christoph Von Liel	One Make Manager	(424) 482-6197
Ryan Anselmo	Series Manager	(424) 339-9432
Mario Brown	Technical Support	(470) 952-9509
Michael Yanase	Parts Support	(678) 938 1310
Jeremy Sundt	Race Series Specialist	(470) 419-9489
Justin Cornelison	Mar/Comms Specialist	(404) 716-2961



Casey Carden	Race Director	(770) 519-7190
Duane Sampson	Director, Single Make	(386) 285-7021
Austin Farr	Coordinator, Single Make	(386) 293-1702
Cory Posocco	Logistics / Event Ops	(386) 566-8313
Holly Langer	Paddock Layout	(386) 871-0241
Scott Ellison	Technical	(734) 621-9130
Johnny Knotts	Pit Lane Supervisor	(813) 763-4669
Gayle Burnham	Administration	(386) 235-7800
David Pees	Timing & Scoring	(386) 308-8866
Ryan McLean	Medical Liaison (Off site)	(386) 285-6913
Dylan Lanphere	Part Time Medical Liaison	(662) 523-7914
Roy Spielmann	Track Services	(414) 702-0905
Robert Bosworth	Safety & Security	(704) 728-8087

# IMSA RESOURCES

IMSA COMPETITOR LANDING PAGE:

<https://www.imsa.com/competitors/>

- Team Portal
- Event Information
- Rules & Regulations
- Marketing & Branding Page

IMSA NOTICE BOARD:

<http://results.imsa.com/>

- Driver & TM Briefings
- Entry Lists
- Minute by Minute
- Timing Results
- Penalties

## WELCOME TO THE 2025 IMSA COMPETITION LANDING PAGE

FOR ALL IMSA COMPETITOR INFORMATION PLEASE CLICK THE HAMBURGER MENU AT THE TOP LEFT OF THIS PAGE.

The one-stop shop for everything you'll need to get your team on track.

2025 Team Portal

2025 Driver Portal

Media Center

Team and Driver Video & Photo Licensing

IMSA Marketing and Branding Resources

Race Results

Ferrari Challenge Race Results

Special Michelin Fleet Pricing for Commercial/Light Truck Tires and Services - For ALL IMSA Members

Special Michelin Discount Program for Passenger Tires - For ALL IMSA Members

IMSA Proud Sponsors

## LATEST EVENT INFORMATION



**Mobil 1 Twelve Hours of Sebring**

Mar 12, 2025 to Mar 15, 2025

Sebring, FL

Reservations

Provisional Schedule & SR 1/8/25

Track Map

# PCCNA EVENT INFORMATION

COMPETITORS

HOME

EVENT INFORMATION

TEST EVENT INFORMATION

RULES & REGULATIONS

MARKETING & BRANDING

FORM & APPLICATIONS

IMSA

PROUD SUPPLIERS

IMSA WEATHERTECH SPORTSCAR CHAMPIONSHIP

IMSA MICHELIN PILOT CHALLENGE

IMSA VP RACING SPORTSCAR CHALLENGE

FERRARI CHALLENGE

LAMBORGHINI SUPER TROFEO

MUSTANG CHALLENGE

MAZDA MX-5 CUP

PORSCHE CARRERA CUP

Shop Official 2025 IMSA Merchandise

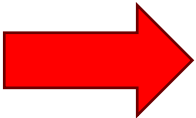
www.teamimsa.com

2025 PORSCHE CARRERA CUP NORTH AMERICA EVENT INFORMATION

2025 EVENTS

Watkins Glen International Raceway

Provisional Schedule & SR 1/8/25



## 2025 EVENTS



### Watkins Glen International

Jun 19 to Jun 21  
Watkins Glen, NY

Download:  
[Provisional Schedule & SR 5/21/25](#)  
[Track Map](#)



# » TO IMSA REGISTRATION

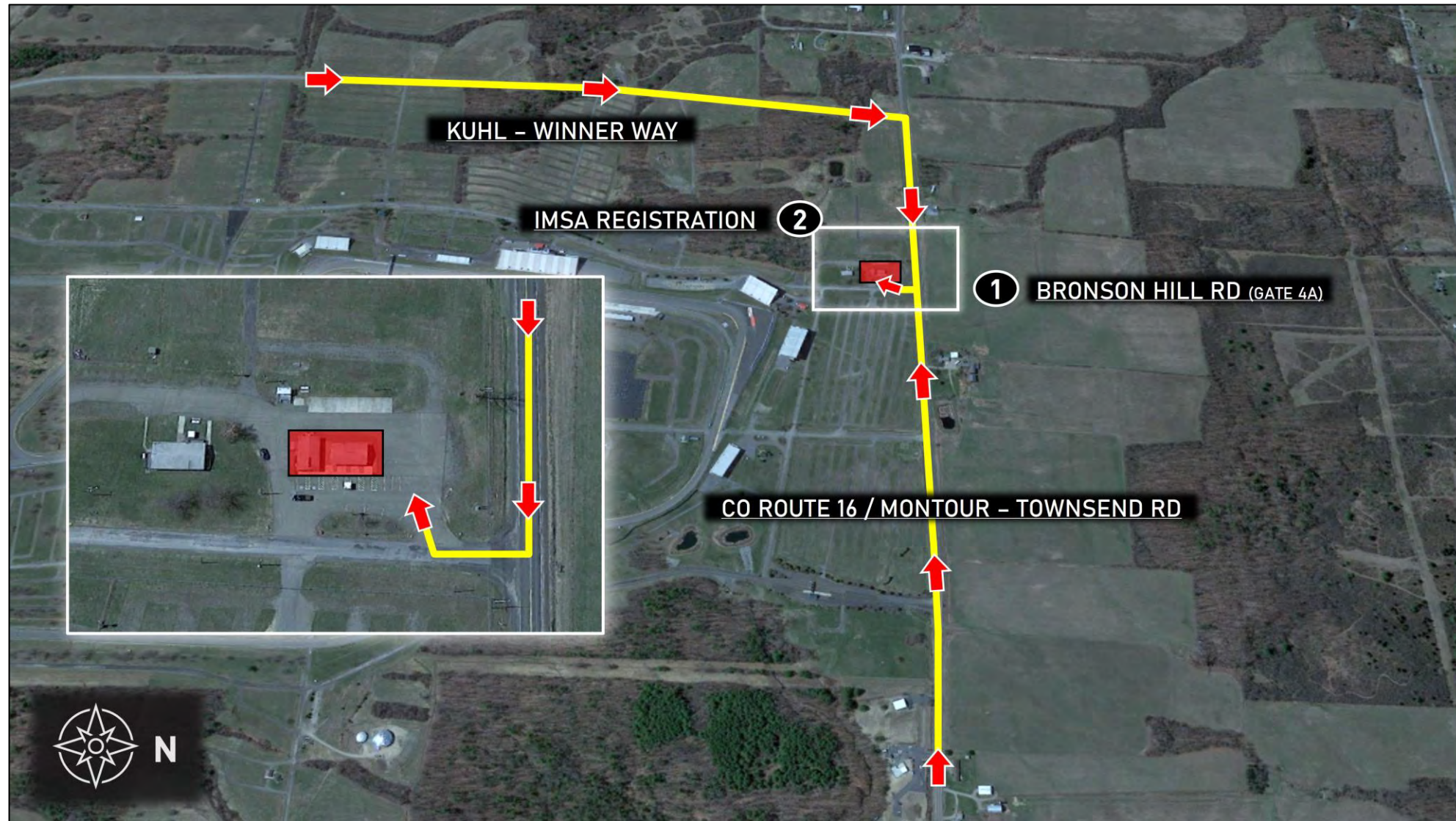


## Directions

1. Take County Route 16 (Montour-Townsend Rd) to Bronson Hill Rd (Gate 4A)
2. Take first right and follow signage to IMSA Registration (see inset photo)

## Notes

- Refer to Official Schedule / SR for Registration hours of operation
- Address: 1999 Bronson Hill Rd, Watkins Glen, NY 14891



# EVENT INFORMATION

---

- Through Saturday, 6/21, IMSA annual parking passes are only permitted at Gate 5 and are not valid for parking inside the facility
- Gate 5 is closed from 12:00 AM to 5:30 AM, after-hours access must call WGI security. See SR for contact info
- On Sunday, 6/22 only, IMSA annual parking passes are permitted for parking inside the facility based on availability

## INFIELD PARKING PASSES FOR TRACK DESIGNATED LOTS

- One (1) each per entered PCCNA Car
- Only credentialed personnel with proper parking passes are permitted to enter Gate 2 and park in the designated competitor parking areas
- Additional infield parking in track-designated lots may be available for purchase from the WGI main ticket office or at Gate 2



# » TO IMSA INFIELD PARKING

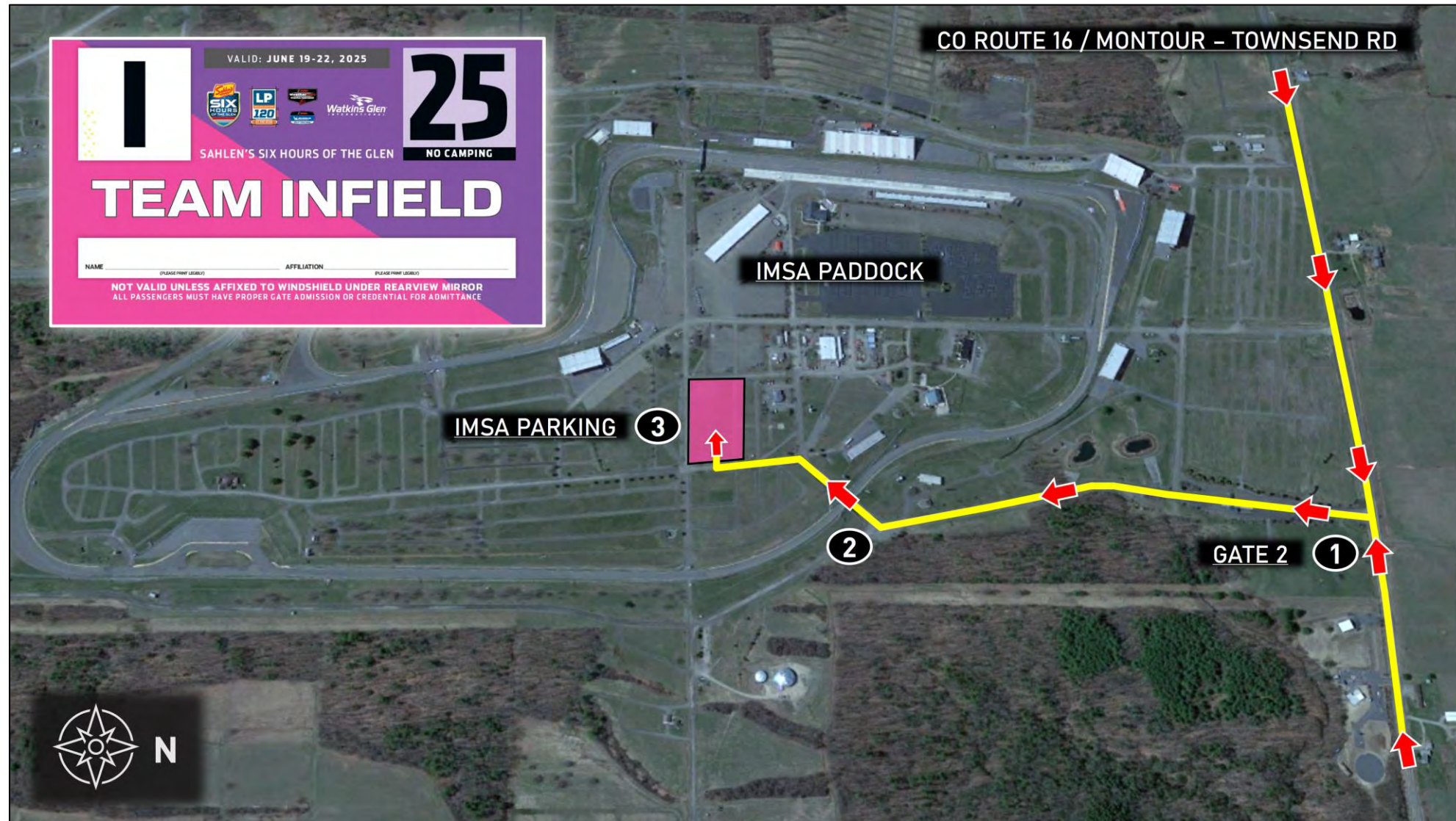


## Directions

1. Take County Route 16 (Montour-Townsend Rd) to Watkins Glen Gate 2
2. Proceed through tunnel and take first left
3. Proceed to designated IMSA Infield Parking area (pink shaded area)

## Notes

- Proper track-issued parking pass required for entry
  - Valid from Thu., 6/19 – Sun., 6/22





# » TO IMSA LOWER INFIELD PARKING

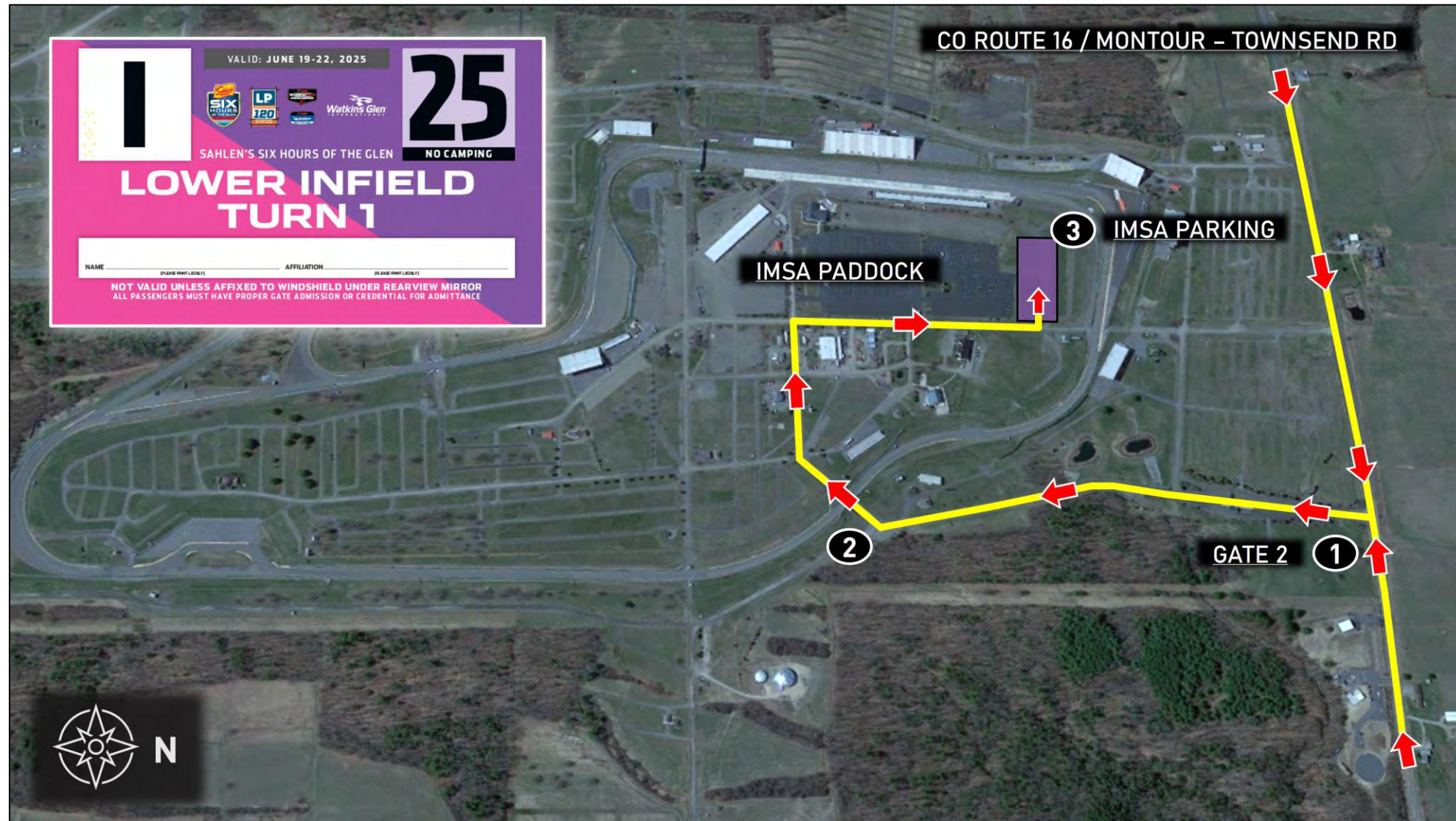


## Directions

1. Take County Route 16 (Montour-Townsend Rd) to Watkins Glen Gate 2
2. Proceed through tunnel and through infield
3. Proceed to designated IMSA Lower Infield Parking area (purple shaded area)

## Notes

- Proper track-issued parking pass required for entry
  - Valid from Thu., 6/19 – Sun., 6/22





# » TO IMSA GATE 5 PARKING

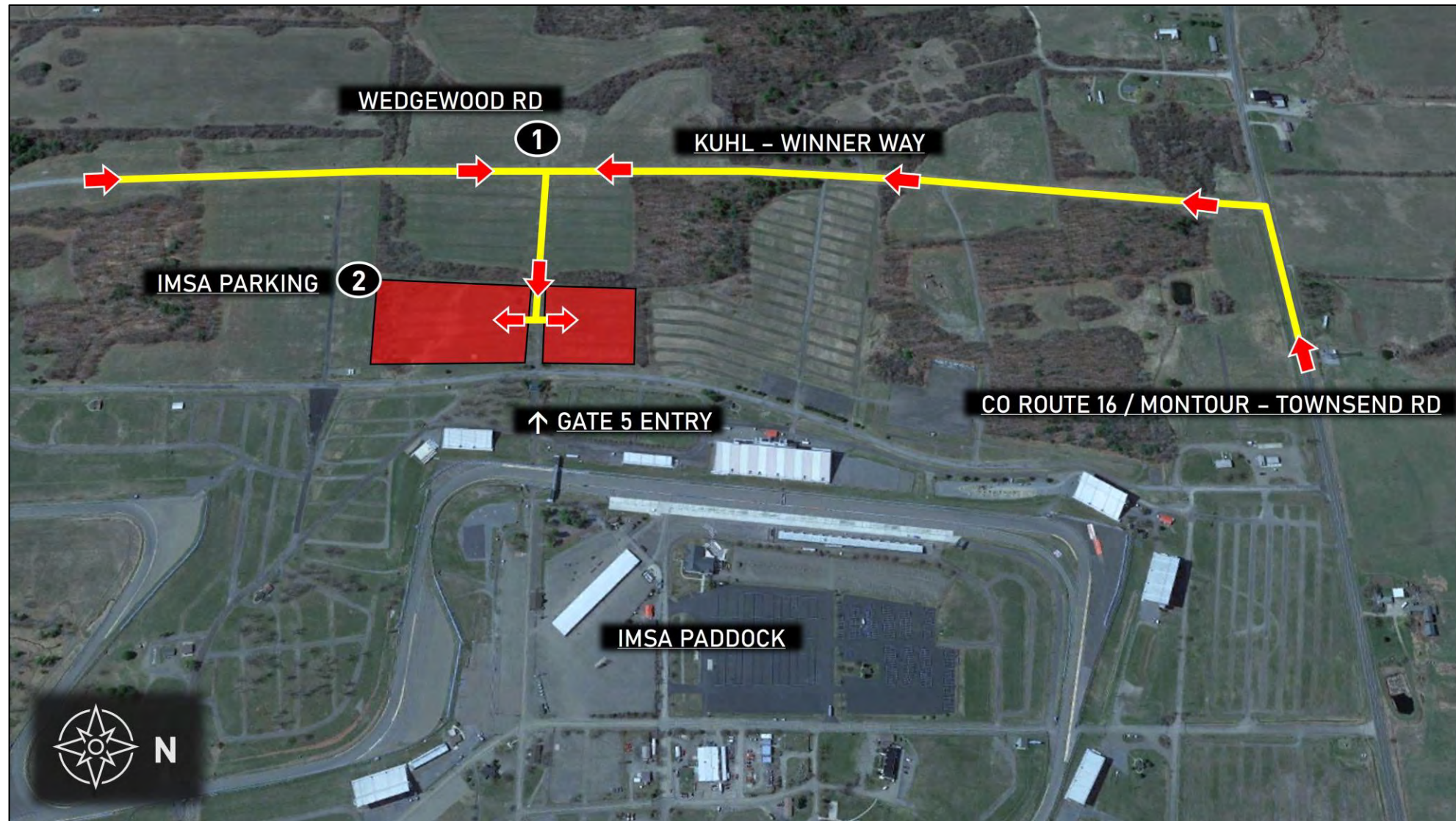


## Directions

1. Take Kuhl-Winner Way to Wedgewood Rd
2. Proceed to designated IMSA Gate 5 Parking area (red shaded areas)

## Notes

- IMSA annual hangtag or proper track-issued parking pass required for entry
  - Valid from Thu., 6/19 – Sun., 6/22
- Use Gate 5 and Walkover Bridge to access IMSA paddock areas
- Gate 5 entry will be closed daily from 12:00 AM – 5:30 AM. Contact WGI Security for after-hours access



# EVENT INFORMATION

---

## GOLF CARTS / PIT VEHICLES

- **PCCNA** Teams are permitted **one (1)** support vehicle (golf carts) in the Paddock area per entered Car.
- **PCCNA** Teams are permitted **one (1)** support vehicle (golf carts) in the Pit Lane area per entered Car.
- Access stickers available from Carol Mueller in the WeatherTech Technical Trailer.

## TRACK GOLF CART / PIT VEHICLE REQUIREMENTS

- Motorized support vehicles operated outside of the garage, pit and Paddock and the Driver/Owner Lot must have either a single-event or annual permit issued by International Speedway Corporation (ISC)
- For annual ISC permits valid at all ISC properties please contact [golfcarts@nascar.com](mailto:golfcarts@nascar.com) or 386-681-3850
- For a single-event permit at Watkins Glen contact Jessica Cramer, Operations Center, [jcramer@theglen.com](mailto:jcramer@theglen.com) or 607-535-3311



# IMSA SEVERE WEATHER PLAN

---

- IMSA uses the DTN Weather Service with Lightning Detection.
- Notifications are sent (as in past years). Message will start with "IMSA MESSAGE":
  - Within 30 miles of the track – Advisory message sent for informational purposes.
  - Within 20 miles of the track – Cautionary message sent to increase awareness and trigger protective actions for personnel and equipment.
  - Within 8 miles of the track – Full-Stop message sent for personnel to stop all activities and seek shelter due to potentially dangerous conditions.
    - IMSA continues to send periodic updates through the messaging service while on-track activities are under a “full-stop”.
  - When severe weather has moved out of the area, an “all-clear” message is transmitted.

**IMSA uses an internal messaging service. Text messages are sent to all credentialed attendees for an Event. There is no need to provide a recipient list.**

# IF YOU NEED ASSISTANCE WHILE ON PROPERTY

---

## **ACCESSING EMS/MEDICAL (EMERGENCY & NON-EMERGENCY)**

- For emergency assistance (24 hours per day), dial 911. The call will be captured by Schuyler County 911 Center and will be directed to WGI 911 Communications for dispatch.
- For non-emergency assistance during hours of operation, go to In-field Care Center. If In-field Care Center is closed, call 911.

## **ACCESSING LAW ENFORCEMENT AND FIRE DEPARTMENT (EMERGENCY OR NON-EMERGENCY)**

- For a fire assistance (24 hours per day), dial 911. The call will be captured by Schuyler County 911 Center and will be directed to WGI 911 Communications for dispatch.



# PIT LANE LOGISTICS

---

- All pit boxes are 21 feet.

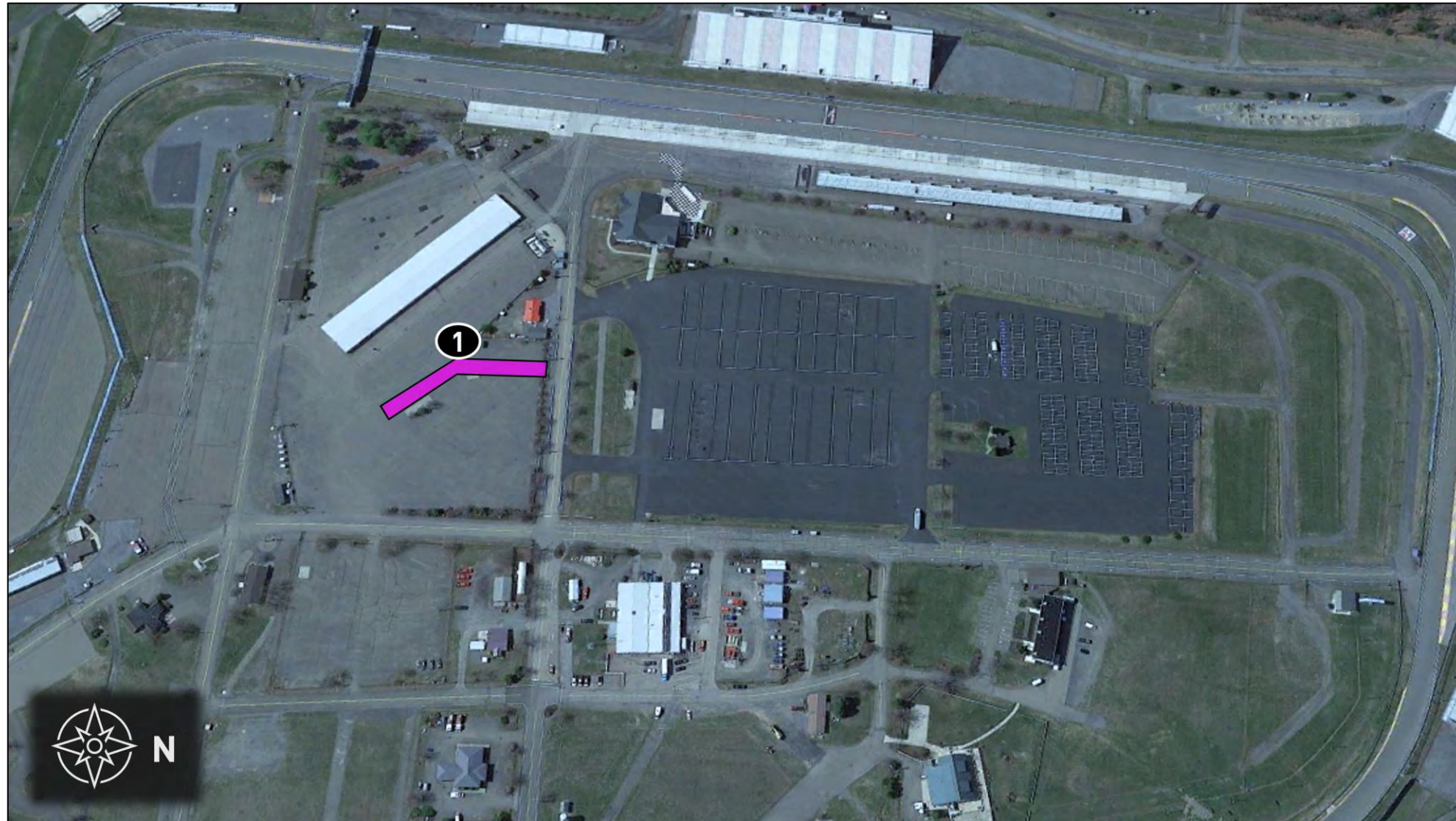
## PIT LANE SUPPORT:

- Located at IMSA Timing Stand on Start/Finish or [IMSATIMING@IMSA.COM](mailto:IMSATIMING@IMSA.COM)

# » FALSE GRID LOCATION

## Locations

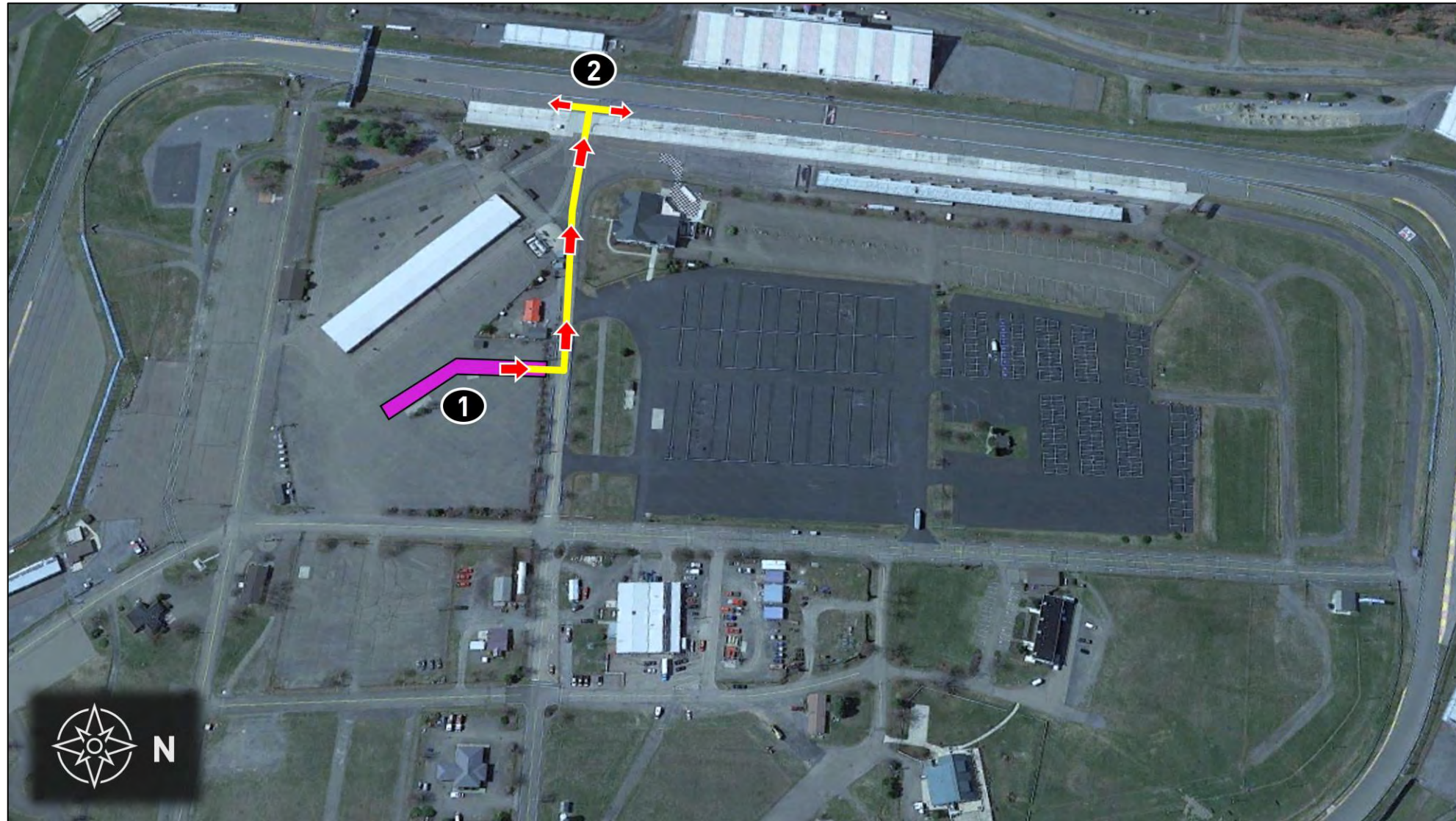
1. False Grid for Porsche Carrera Cup North America





## Directions

1. Exit False Grid and proceed to Pit Lane Access Road
2. Enter Pit Lane and proceed to assigned Pit Box. Traffic may proceed in either direction on Pit Lane



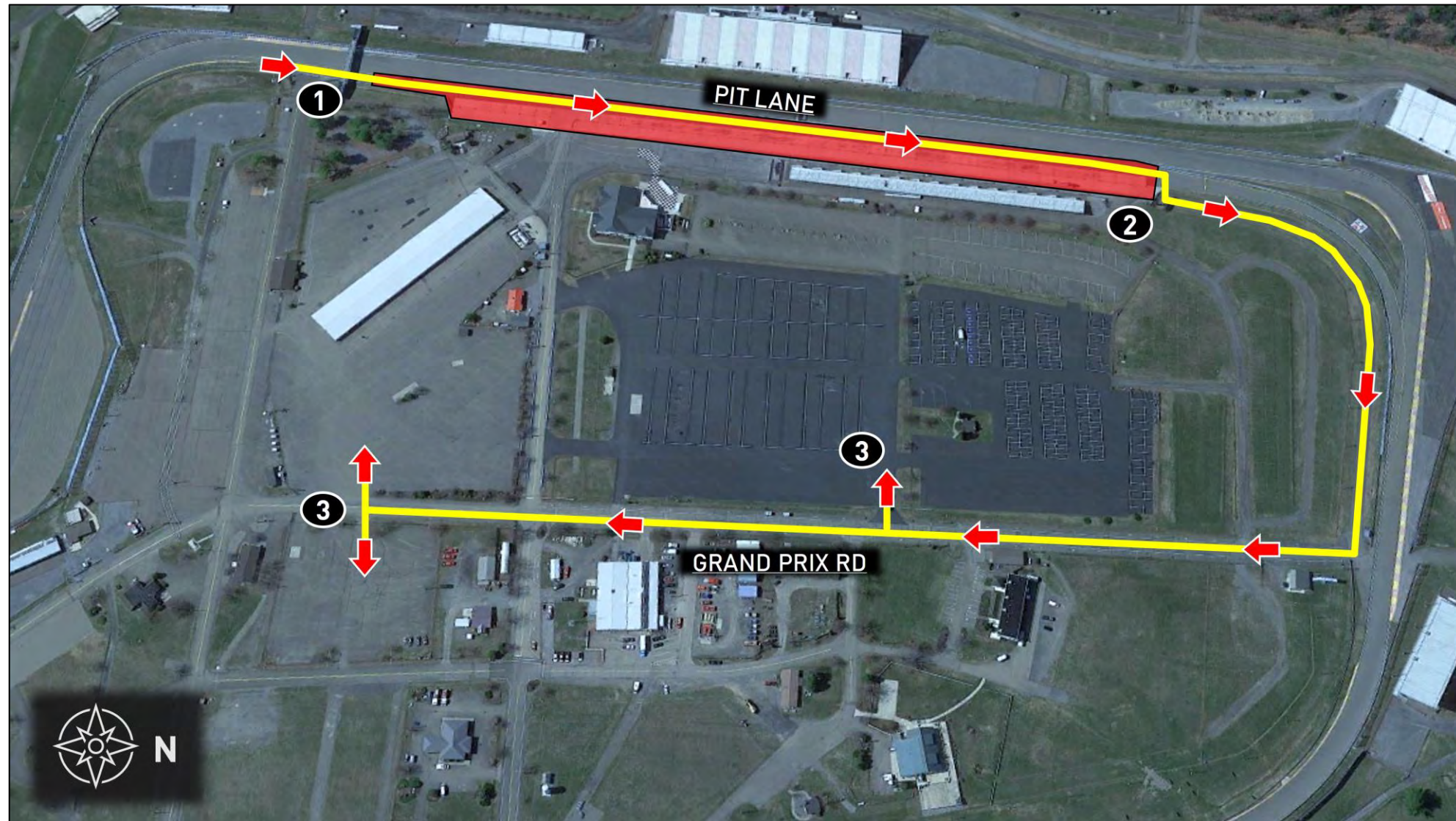


# » PIT LANE TO PADDOCK



## Directions

1. Exit track onto Pit Lane and proceed down Pit Lane
2. Proceed to Paddock Access Road, continuing to Grand Prix Rd
3. Enter Series Paddock





# IMSA TRACK SERVICES

## IMSA CHASE VEHICLES

- Chase 1
- Chase 2
- Chase 3
- Chase 4

## ON-TRACK ASSISTANCE

- Communication with Track Services Medic
- Neutral and power shut off
- Follow direction of on-scene Track Services personnel
- Maintain a safe speed and distance when passing on-track incidents with Track Services team members present



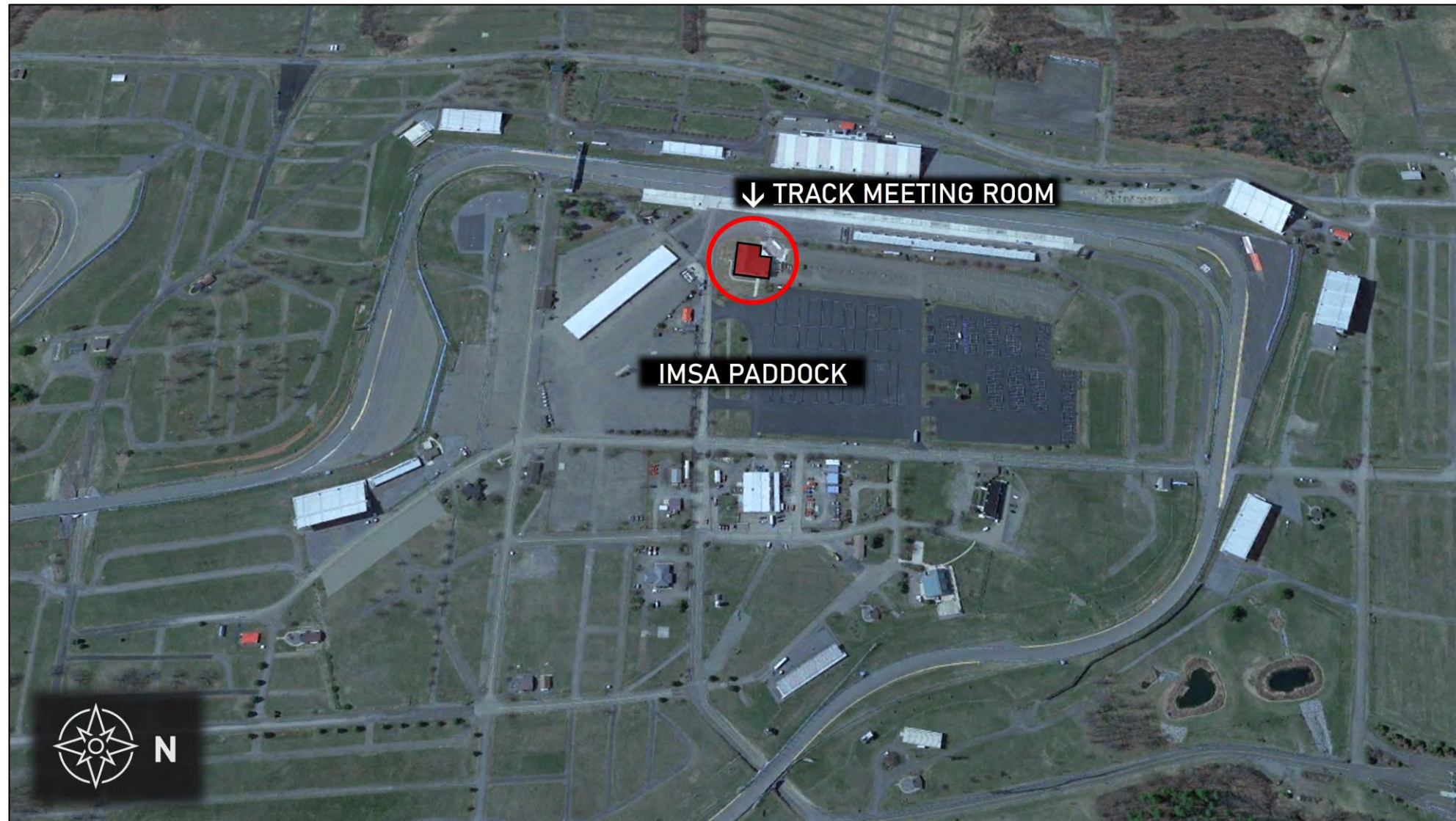
Contact: Roy Spielmann (414) 702-0905

# » TRACK MEETING ROOM



## Notes

- Watkins Glen Track Meeting Room is on the top floor of the Media Center
- Proper credentials required for paddock entry
- Refer to Official Schedule / SR for specific briefing times



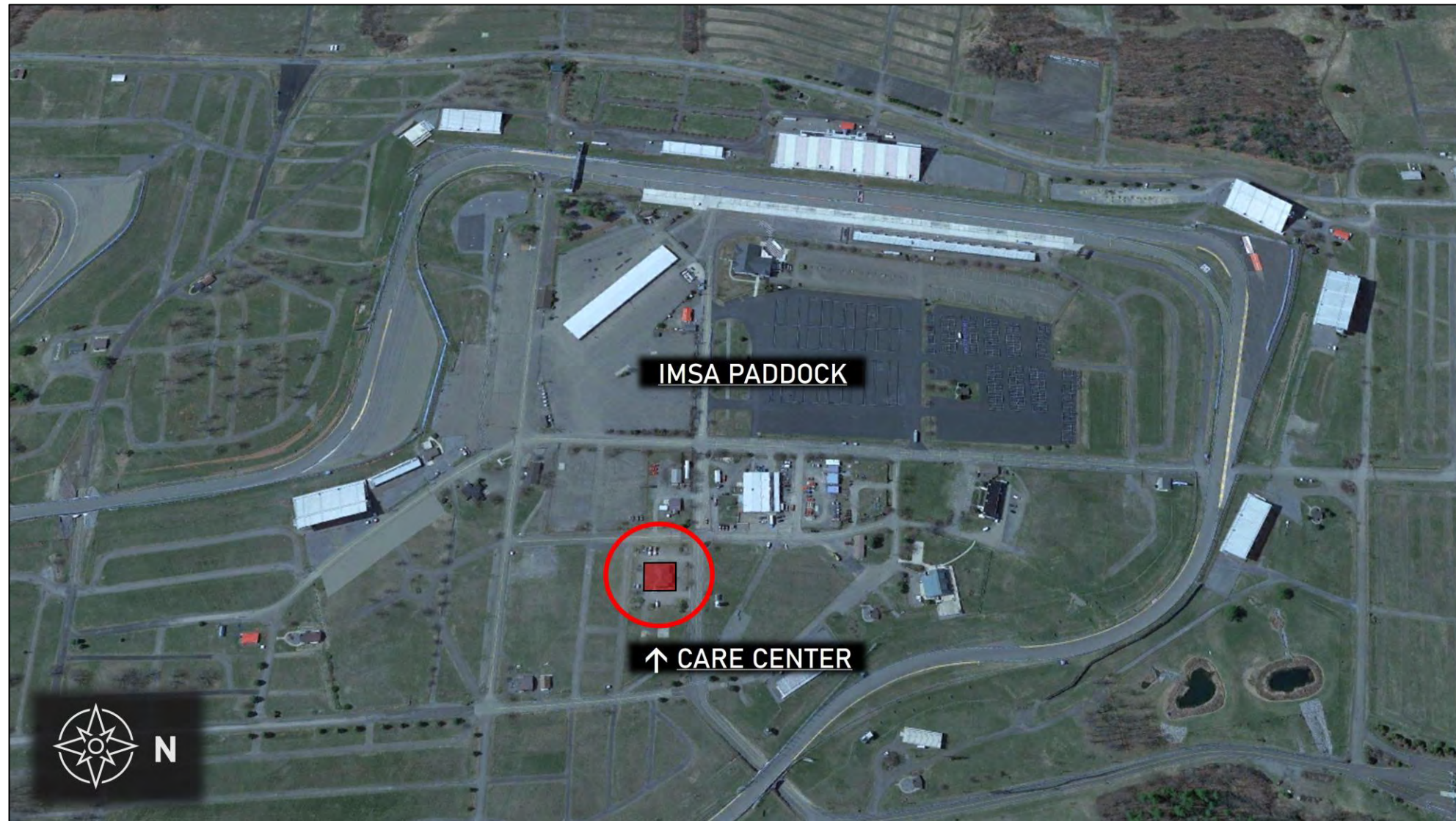


# » CARE CENTER LOCATION



## Notes

- Care Center is located East of paddocks (red shaded area)
- Refer to Official Schedule / SR for Care Center hours of operation





# PLSL BEGINS



# PIT LANE PROTOCOL





# PIT EXIT / PLSL ENDS





# PIT EXIT MERGE

CARS EXITING THE PIT LANE MUST REMAIN  
TWO WHEELS RIGHT OF THE YELLOW LINE

STAY RIGHT TO TURN 2

RESPECT THE SPEED DIFFERENCE OF THOSE  
ALREADY ON TRACK



# ORANGE OVERLAPS





# TRACK LIMITS – T1





# SHORT CUT – T5





# TRACK LIMITS – T8





# TRACK LIMITS – T10





# SHORT COURSE RE-ENTRY





# PIT IN MERGE



# RED FLAG DURING PRACTICE

---

29.10.1. (SSR) Red Flag, Practice. Any Driver determined responsible for an incident resulting in a red flag stoppage in a Practice Session may be penalized by deletion of the Car's fastest timed lap from Qualifying.

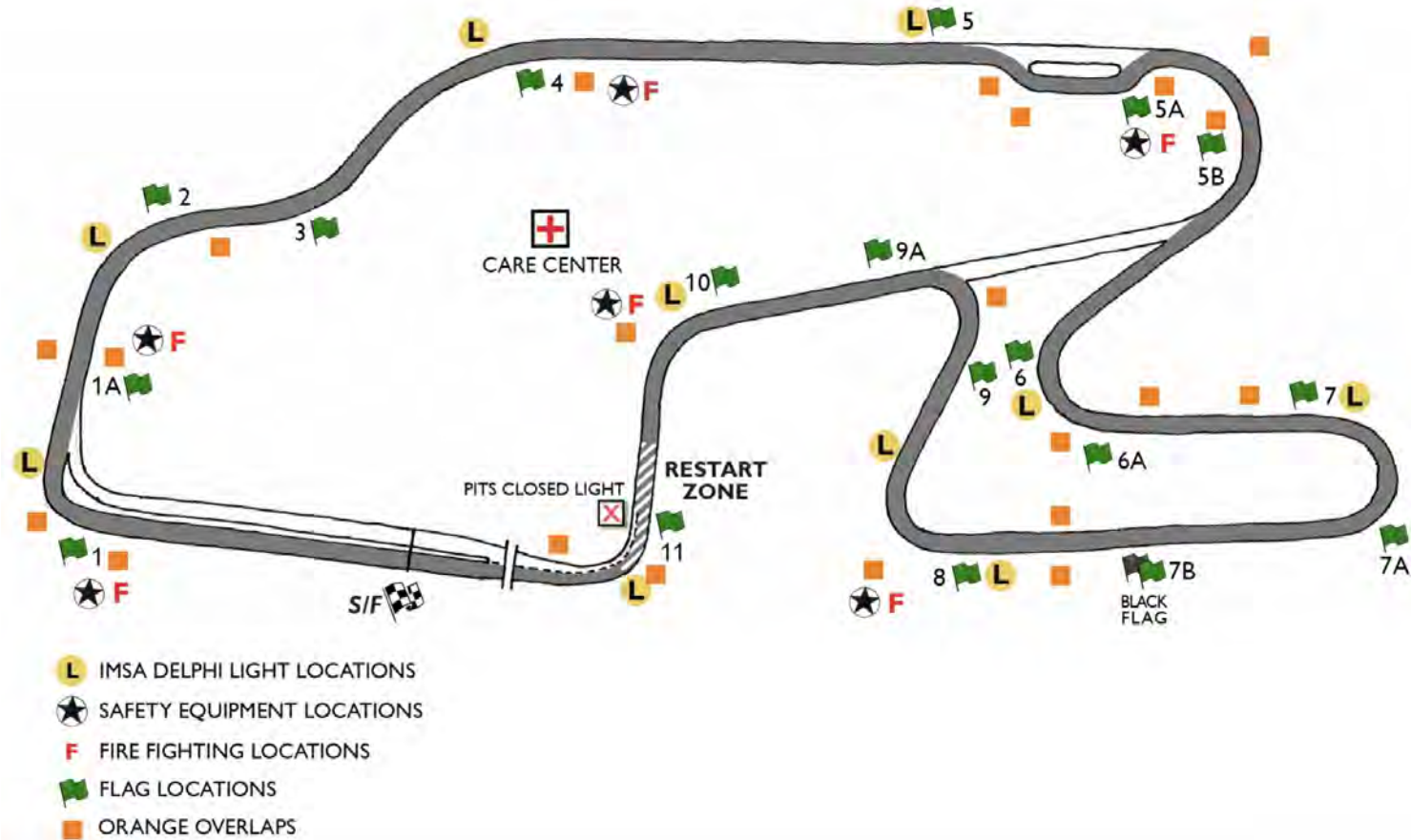
“Responsible for an incident” includes single Car **Driver Error** incidents (stuck in gravel, crash, etc...)



# TRACK MAP



## 2025 SAHLEN'S SIX HOURS OF THE GLEN



# PORSCHE PENFED DRIVERS' LOUNGE - WGI

**PORSCHE**  
CARRERA CUP  
NORTH AMERICA

**PENFED**  
CREDIT UNION

## PORSCHE PENFED DRIVER'S LOUNGE

### Sahlen's Six Hours of The Glen

**DATE:** 19 - 21 June, 2025

**19 JUN THURSDAY:** Breakfast 7:00 - 10:00am | Lunch 11:00am - 2:00pm

**20 JUN FRIDAY:** Breakfast 7:00 - 10:00am | Lunch 11:00am - 2:00pm  
Evening Reception w/ Live Music 5:30 - 7:00pm

**21 JUN SATURDAY:** Breakfast 7:00 - 10:00am | Lunch 11:00am - 2:00pm

**LOCATION:** Porsche PenFed Driver's Lounge

**RSVP:** Please register your guest count, including; drivers, team members, and guests by the latest on Wednesday, 11 June, 2025.

**YOKOHAMA** **PENFED** **SOLAIRUS** **Mobil 1**  
CREDIT UNION AVIATION

**EBOOST** **TAGHeuer** **Exxon Mobil** **RACE BREW**  
Synergy Supreme 0.0%

**sparco** **APEX ONE** **IMSA**



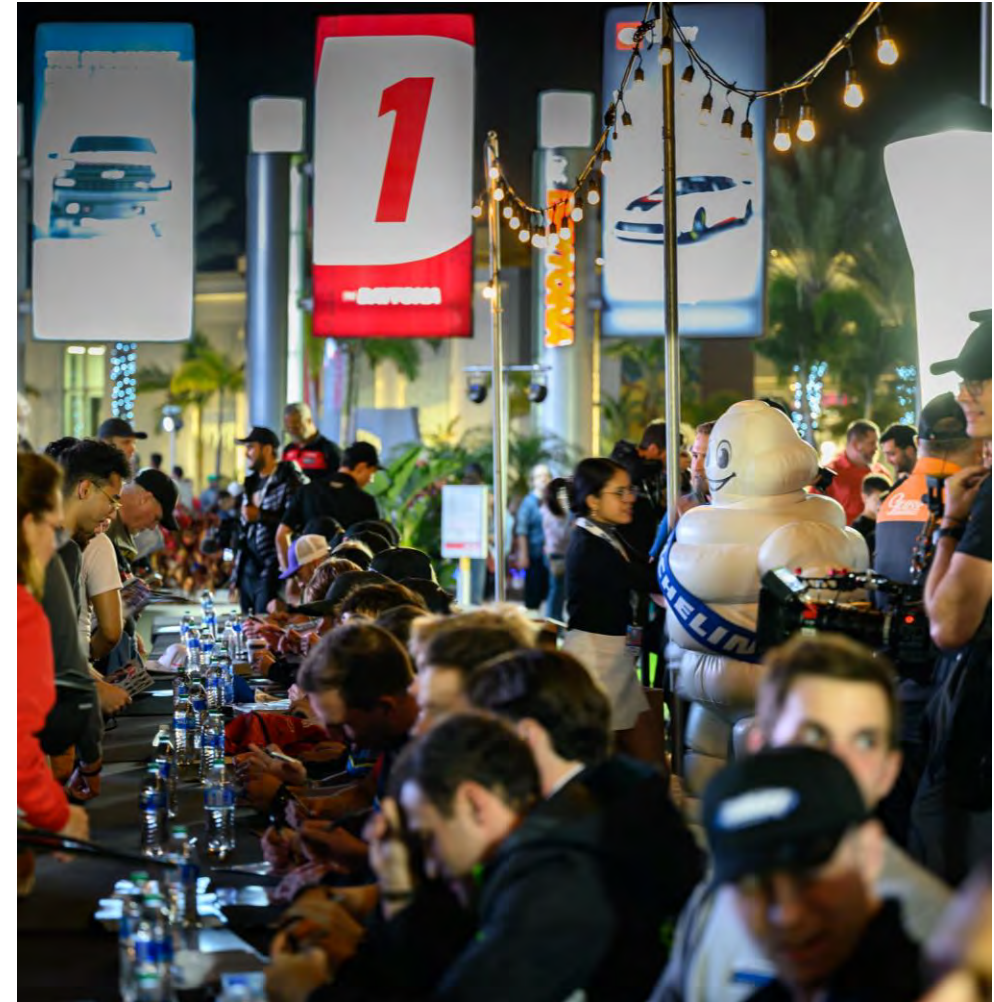
# UPCOMING PROMOTIONAL / FAN OPPORTUNITIES

## INDIANAPOLIS MOTOR SPEEDWAY

THURSDAY, SEPTEMBER 18 | INDIANAPOLIS STREET FESTIVAL

## MOTUL PETIT LE MANS

TUESDAY, OCTOBER 7 | KICKOFF PARTY SUWANEE TOWN CENTER



Interested in participating? Contact [Emily Nash](#) for more details.

# PORSCHE CARRERA CUP NORTH AMERICA

## WATKINS GLEN

DRIVER AND TEAM MANAGER BRIEFING

**PORSCHE**  

---

**CARRERA CUP**  
NORTH AMERICA



# PRE-RACE PROCEDURES

---

REFER TO THE MxM

# RACE

---

One (1) FORMATION lap

Stay with Safety Car until Safety Car enters pits

Pack up after T8

Pair up after T9 (No more tire scrubbing)

Acceleration Point (Polesitter)

Jump/False start Reviews

- Gaps
- Timed/Early Acceleration
- Out of Line
- Column Passing – Passing cars in your column is NOT allowed until across the S/F line

Official Race start is FIRST time by



# FULL COURSE YELLOW

Failure to maintain proper Safety Car speed and correct gaps between Cars, or otherwise initiate manipulative action to gap Cars, is prohibited and subject to penalty.

Race Control radio, double yellow flags displayed

Response vehicles may begin to move as soon as FCY is announced

Leader to Safety Car speed, all Cars pack up – respect the area of incident/Track Services personnel

- RC instructions regarding track condition over radio
- SC dispatched from Baker Gate (T1/2, DR)

## RESTART

- Maintain SC speed, let SC get away, *no more tire scrubbing after Turn 9*

## RESTART ACCELERATION ZONE – Entry to T11

- Passing on display of green flag

# RESTART ACCELERATION ZONE

Restart acceleration zone is the entry to Turn 11.

Passing is permitted when the Green Flag is displayed.





# WET TIRE CHANGE PROCESS

---

If Race is not started as declared 'Wet', the following process is used:

- Race Control announces FCY and deploys Safety Car to collect the field.
- The running order of the Cars is taken at S/F for all Cars.
- After all Cars have crossed S/F but before arriving at the pit entry, Race Control declares Red Flag.
- The Race Director declares the Race 'Wet'.
- The Safety Car leads the field into the pit lane.
- Cars are directed to their pit boxes for the exclusive purpose of changing to wet tires, no other work.
- Teams are given Five (5) minutes to change tires.
- Cars unable to continue must inform their Pit Official.
- The Pit Officials will call the order of the Cars as taken at S/F to release from their pit box one at a time and proceed on track behind the Safety Car.
- Changes to the running order in case of any misfortune after crossing S/F are restored for the restart.
- A 'confirmation lap' is performed to check the order of the Cars and to direct any necessary changes.
- The Race is resumed from FCY as normal.

# DRIVING STANDARDS

---

- Qualifying
- Starts
- Passing
- Coexistence
- Respect on Track
- Respect off Track



# PORSCHE CARRERA CUP NORTH AMERICA

THANK YOU

**PORSCHE**  

---

**CARRERA CUP**  
NORTH AMERICA