

# SUPER TROFEO NORTH AMERICA

TEAM MANAGER MEETING



SQUADRA CORSE

# SERIES CONTACTS



Erik Skirmants	Senior Motorsport Manager	(571) 240-8193
Angelo Dinkov	Series Support	(571) 352-5570
Craig Jamison	Parts Support	(248) 943-7343
Andrew Bosscher	Engineering Support	(586) 709-8812
Rachel Crawford	Hospitality Coordinator	(248) 935-9609
Danny Van Dongen	Hankook Motorsports USA	(305) 809-0356

Todd Snyder	Race Director	(860) 248-9115
Duane Sampson	Director, Single Make	(386) 285-7021
Austin Farr	Coordinator, Single Make	(386) 293-1702
Cory Posocco	Logistics & Event Ops	(386) 566-8313
Holly Langer	Paddock Layout	(386) 871-0241
Scott Ellison	Technical	(734) 621-9130
Johnny Knotts	Pit Lane Supervisor	(813) 763-4669
Carol Mueller	Administration	(386) 262-8932
David Pees	Timing & Scoring	(386) 308-8866
Ryan McLean	Medical Liaison	(386) 285-6913
Roy Spielmann	Track Services	(414) 702-0905
Robert Bosworth	Safety & Security	(704) 728-8087

# IMSA RESOURCES

## IMSA COMPETITOR LANDING PAGE:

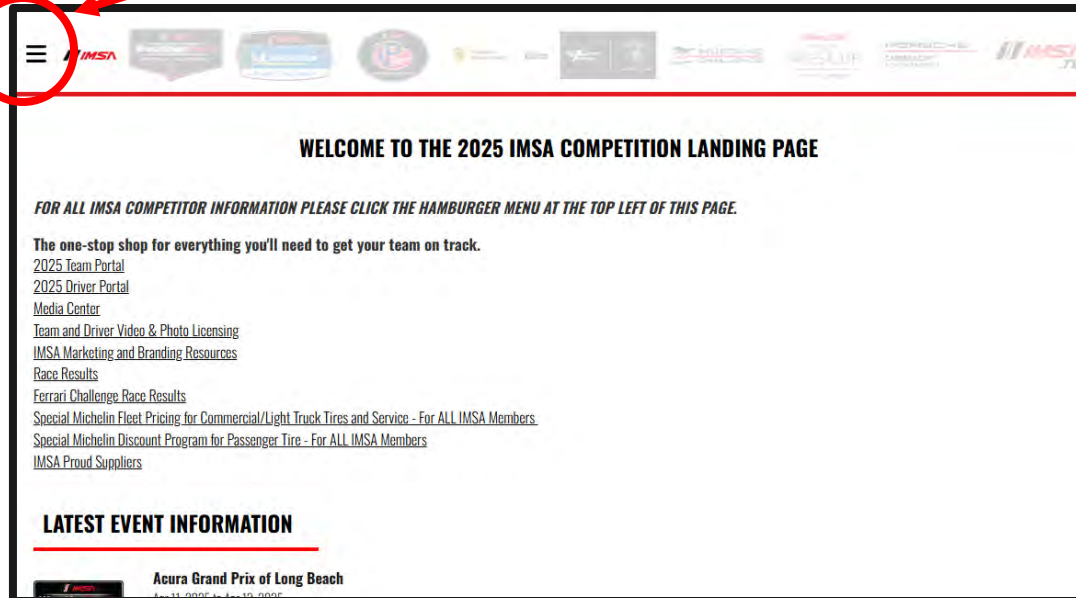
<https://www.imsa.com/competitors/>

- Team Portal
- Event Information
- Rules & Regulations
- Marketing & Branding Page
- All Event Schedules published

## IMSA NOTICE BOARD:

<http://results.imsa.com/>

- Driver & TM Briefings
- Entry Lists
- Minute by Minute
- Timing Results
- Penalties



**WELCOME TO THE 2025 IMSA COMPETITION LANDING PAGE**

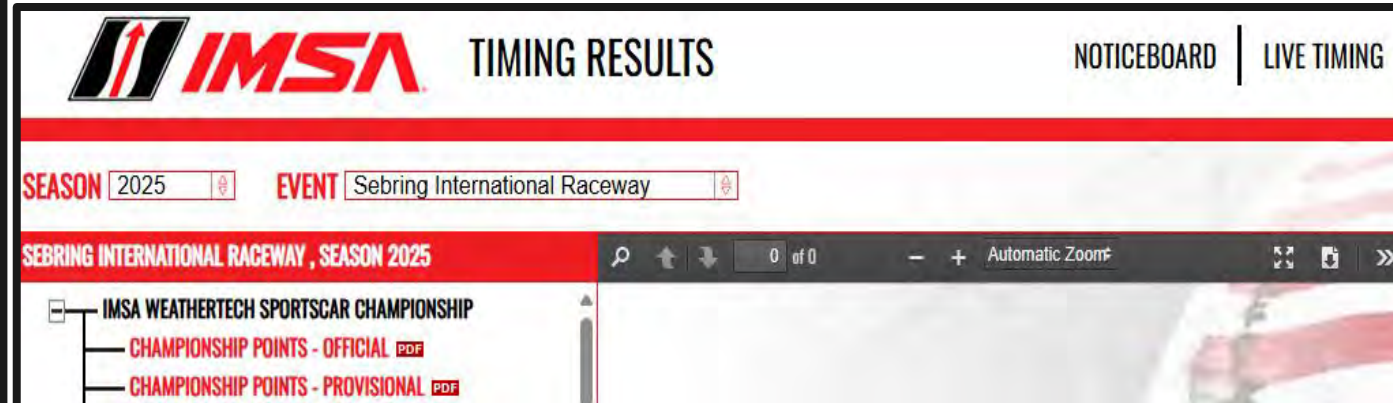
FOR ALL IMSA COMPETITOR INFORMATION PLEASE CLICK THE HAMBURGER MENU AT THE TOP LEFT OF THIS PAGE.

The one-stop shop for everything you'll need to get your team on track.

- 2025 Team Portal
- 2025 Driver Portal
- Media Center
- Team and Driver Video & Photo Licensing
- IMSA Marketing and Branding Resources
- Race Results
- Ferrari Challenge Race Results
- Special Michelin Fleet Pricing for Commercial/Light Truck Tires and Service - For ALL IMSA Members
- Special Michelin Discount Program for Passenger Tire - For ALL IMSA Members
- IMSA Proud Suppliers

**LATEST EVENT INFORMATION**

Acura Grand Prix of Long Beach



**IMSA** TIMING RESULTS

NOTICEBOARD | LIVE TIMING

SEASON 2025 EVENT Sebring International Raceway

SEBRING INTERNATIONAL RACEWAY, SEASON 2025

IMSA WEATHERTECH SPORTSCAR CHAMPIONSHIP

- CHAMPIONSHIP POINTS - OFFICIAL PDF
- CHAMPIONSHIP POINTS - PROVISIONAL PDF

# LST EVENT INFORMATION

COMPETITORS

HOME

EVENT INFORMATION >

TEST EVENT INFORMATION

RULES & REGULATIONS >

MARKETING & BRANDING

FORM & APPLICATIONS >

IMSA

PROUD SUPPLIERS

IMSA

WeatherTech SportsCar Championship

IMSA Michelin Pilot Challenge

IMSA VP Racing Sportscar Challenge

Ferrari Challenge

Lamborghini Super Trofeo

Mustang Challenge

2025 COMPETITOR RESOURCES

Mazda MX-5 Cup

Porsche Carrera Cup

2025 EVENTS

Watkins Glen International Raceway

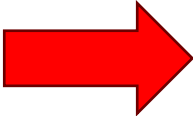
Provisional Schedule & SR 1/8/25

Mobil 1 SEBRING

SEBRING

MARCH 12-15

TICKETS



**2025 COMPETITOR RESOURCES:**  
[2025 LST Electronics Ordering](#)  
[2025 LST Brand Guidelines](#)  
[2025 LST Brochure](#)

## 2025 EVENTS

**Watkins Glen International**  
Jun 19 to Jun 21  
Watkins Glen, NY  
Download:  
[Provisional Schedule & SR 5/21/25](#)  
[Track Map](#)



# » TO IMSA REGISTRATION

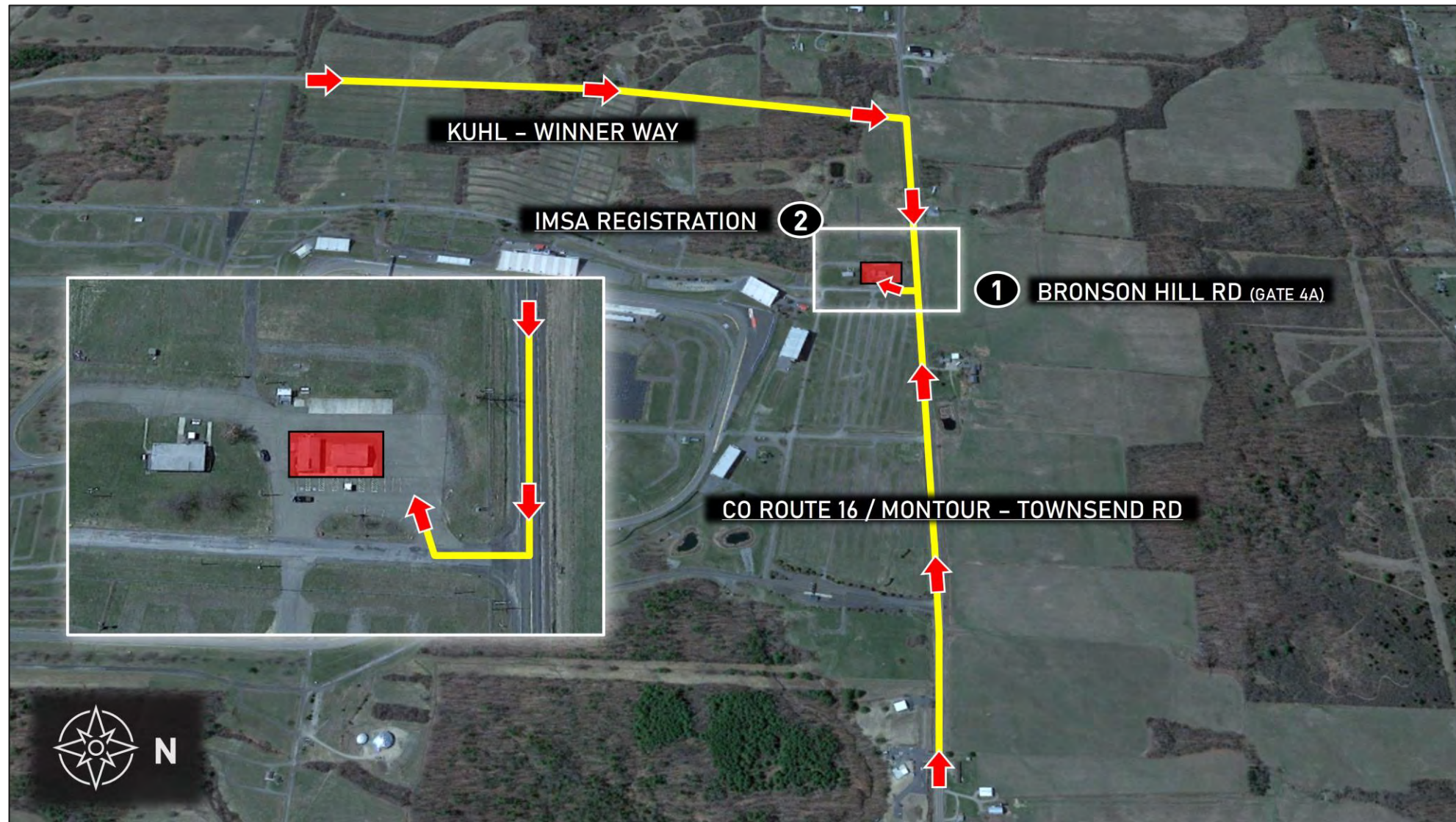


## Directions

1. Take County Route 16 (Montour-Townsend Rd) to Bronson Hill Rd (Gate 4A)
2. Take first right and follow signage to IMSA Registration (see inset photo)

## Notes

- Refer to Official Schedule / SR for Registration hours of operation
- Address: 1999 Bronson Hill Rd, Watkins Glen, NY 14891



# EVENT INFORMATION

---

- Through Saturday, 6/21, IMSA annual parking passes are only permitted at Gate 5 and are not valid for parking inside the facility
- Gate 5 is closed from 12:00 AM to 5:30 AM, after-hours access must call WGI security, see SR for contact info
- On Sunday, 6/22 only, IMSA annual parking passes are permitted for parking inside the facility based on availability

## INFIELD PARKING PASSES FOR TRACK DESIGNATED LOTS

- One (1) each per entered LST Car
- Only credentialed personnel with proper parking passes are permitted to enter Gate 2 and park in the designated competitor parking areas
- Additional infield parking in track-designated lots may be available for purchase from the WGI main ticket office or at Gate 2



# » TO IMSA INFIELD PARKING

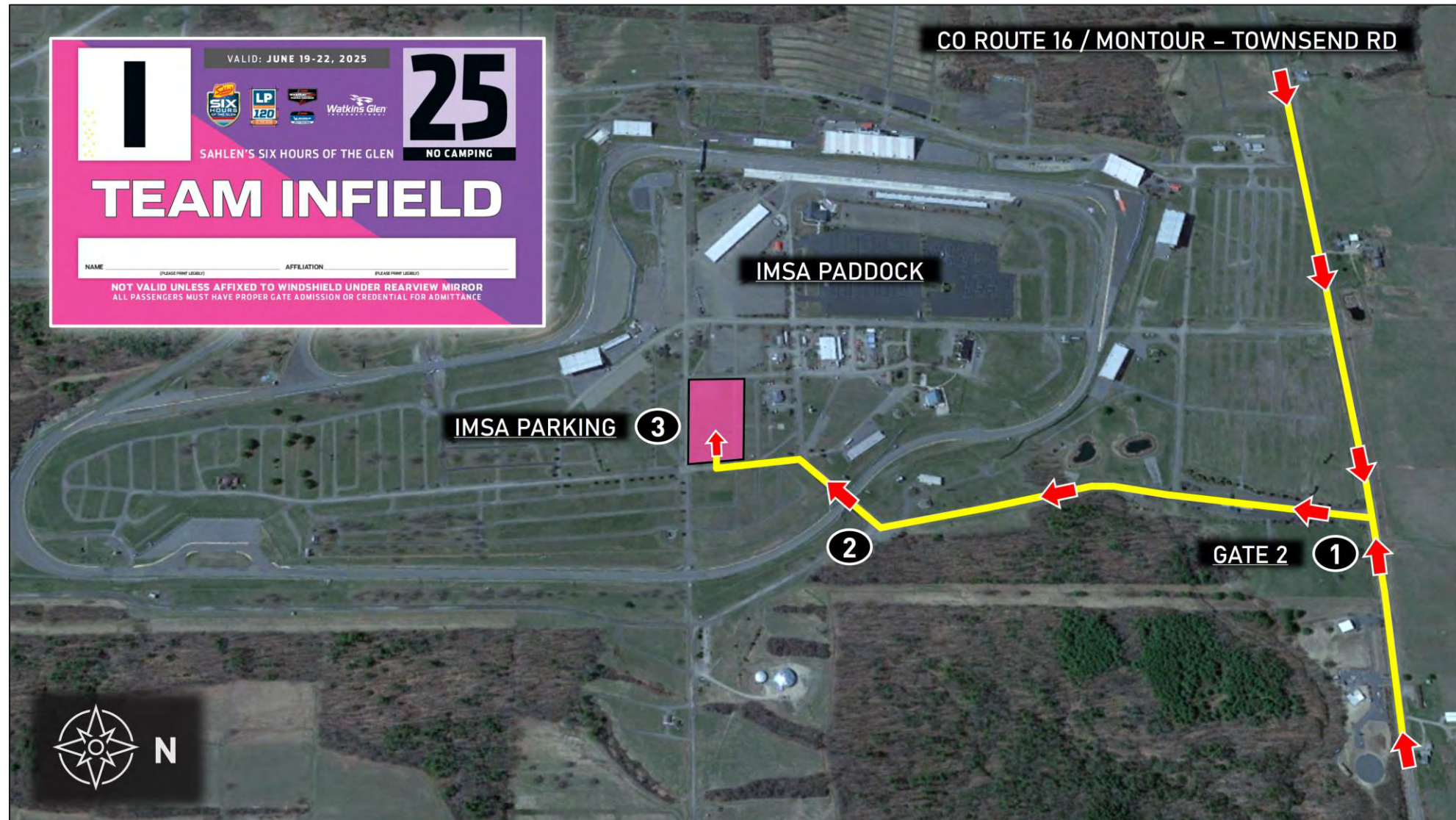


## Directions

1. Take County Route 16 (Montour-Townsend Rd) to Watkins Glen Gate 2
2. Proceed through tunnel and take first left
3. Proceed to designated IMSA Infield Parking area (pink shaded area)

## Notes

- Proper track-issued parking pass required for entry
  - Valid from Thu., 6/19 – Sun., 6/22





# » TO IMSA LOWER INFIELD PARKING

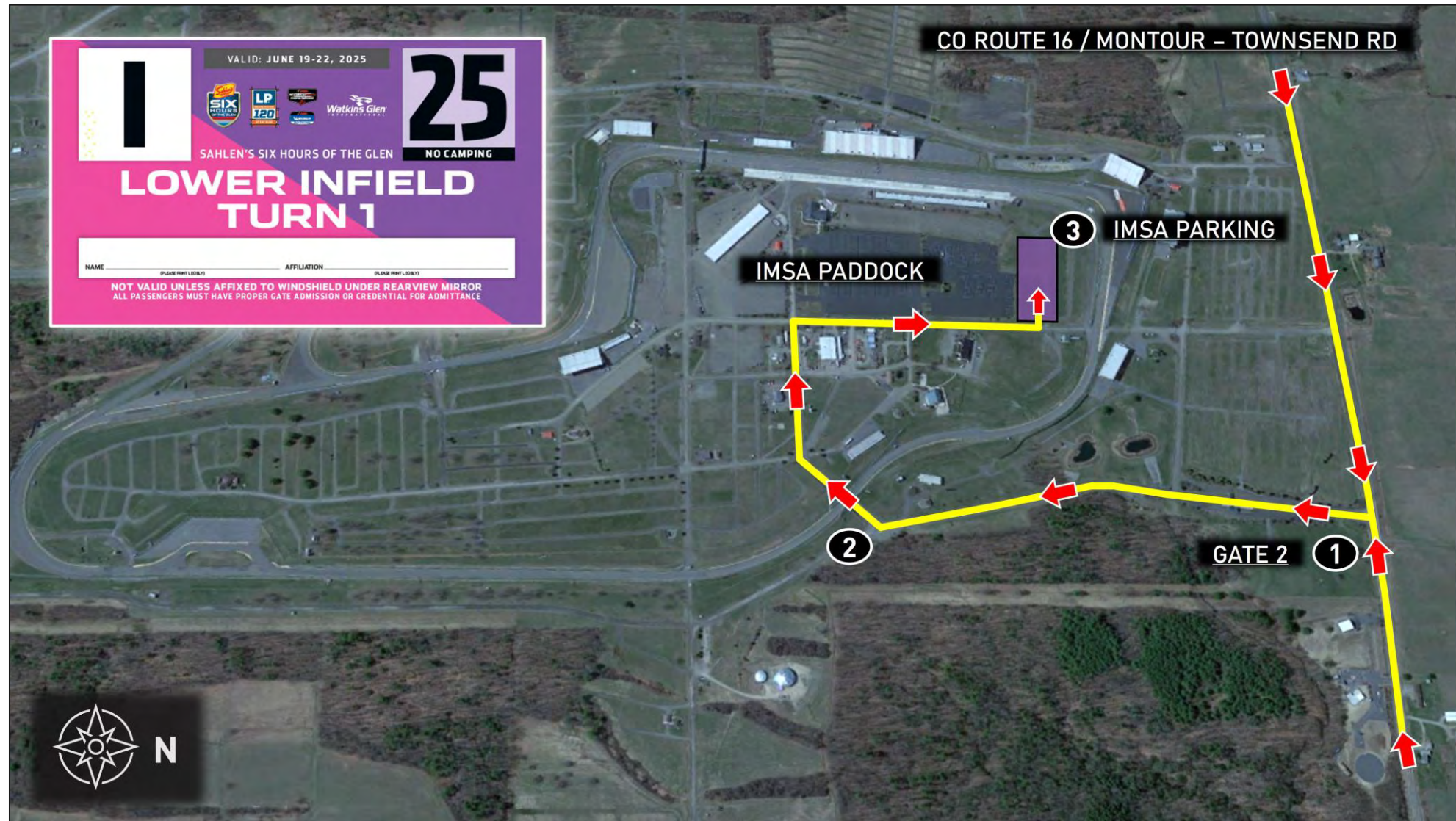


## Directions

1. Take County Route 16 (Montour-Townsend Rd) to Watkins Glen Gate 2
2. Proceed through tunnel and through infield
3. Proceed to designated IMSA Lower Infield Parking area (purple shaded area)

## Notes

- Proper track-issued parking pass required for entry
  - Valid from Thu., 6/19 – Sun., 6/22





# » TO IMSA GATE 5 PARKING

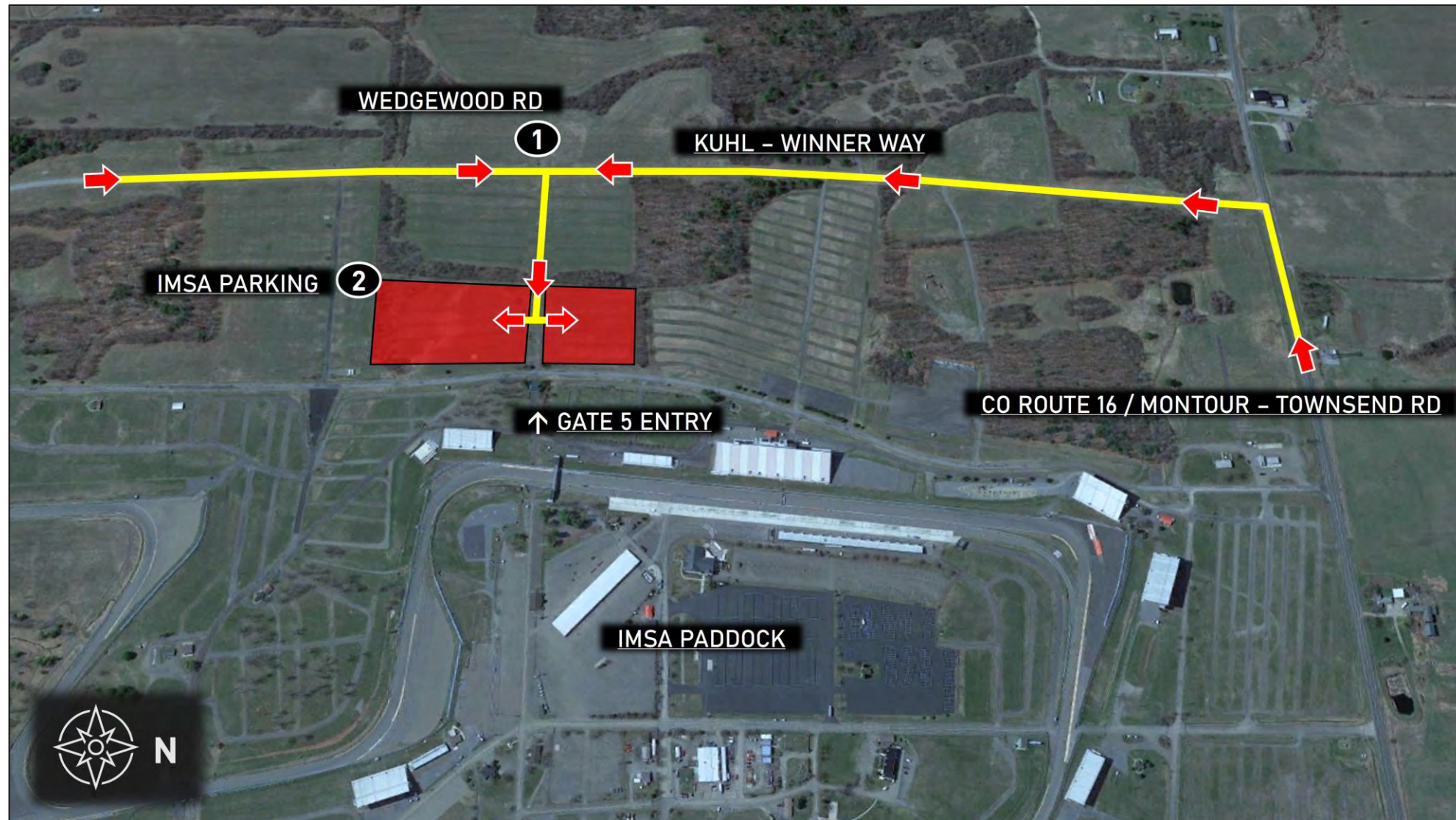


## Directions

1. Take Kuhl-Winner Way to Wedgewood Rd
2. Proceed to designated IMSA Gate 5 Parking area (red shaded areas)

## Notes

- IMSA annual hangtag or proper track-issued parking pass required for entry
  - Valid from Thu., 6/19 – Sun., 6/22
- Use Gate 5 and Walkover Bridge to access IMSA paddock areas
- Gate 5 entry will be closed daily from 12:00 AM – 5:30 AM. Contact WGI Security for after-hours access



# EVENT INFORMATION

---

## GOLF CARTS / PIT VEHICLES

- **LST** Teams are permitted **one (1)** support vehicle (golf carts) in the Paddock area per entered Car.
- **LST** Teams are permitted **one (1)** support vehicle (golf carts) in the Pit Lane area per entered Car.
- Access stickers available from Carol Mueller in the WeatherTech Technical Trailer.

## TRACK GOLF CART / PIT VEHICLE REQUIREMENTS

- Motorized support vehicles operated outside of the garage, pit and Paddock and the Driver/Owner Lot must have either a single-event or annual permit issued by International Speedway Corporation (ISC)
- For annual ISC permits valid at all ISC properties please contact [golfcarts@nascar.com](mailto:golfcarts@nascar.com) or 386-681-3850
- For a single-event permit at Watkins Glen contact Jessica Cramer, Operations Center, [jcramer@theglen.com](mailto:jcramer@theglen.com) or 607-535-3311





# Paddock

**PROHIBITED:  
ANY ONE, TWO OR  
THREE-WHEEL FORM OF  
TRANSPORTATION**

**ONLY PROPERLY  
PERMITTED VEHICLES ACCEPTED  
EXCEPTIONS FOR VESTED MEDIA  
AND ADA TRANSPORT**

Motorcycles, drones, bicycles, skateboards, rollerblades and other non-motorized transportation, as well as motor scooters of one, two or three-wheels and/or designed to transport one or two persons, are prohibited in the garage, pit and/or Paddock areas except authorized power-driven mobility devices (ADA requirements - Americans with Disabilities Act), and accredited and vested media personnel.

Pit vehicles must only be operated by an IMSA credential holder. Motorized carts and similar 3- or 4-wheeled conveyances must not be driven into pit lane except pit equipment approved for a Series or as specified in the SR.

Such use in the Paddock must be for legitimate purposes only.

Excessive speed and/or unsafe operation is prohibited. Participants must abide by state laws and Promoter restrictions regarding licensing, maximum speed, helmet requirement and use.

Such conveyances may be prohibited at certain Events or in certain areas of each facility by local ordinance or Promoter limitation.

# IMSA SEVERE WEATHER PLAN

---

- IMSA uses the DTN Weather Service with Lightning Detection.
- Notifications are sent (as in past years). All messages will start with "IMSA MESSAGE":
  - Within 30 miles of the track – Advisory message sent for informational purposes.
  - Within 20 miles of the track – Cautionary message sent to increase awareness and trigger protective actions for personnel and equipment.
  - Within 8 miles of the track – Full-Stop message sent for personnel to stop all activities and seek shelter due to potentially dangerous conditions.
    - IMSA continues to send periodic updates through the messaging service while on-track activities are under a “full-stop”.
  - When severe weather has moved out of the area, an “all-clear” message is transmitted.

**IMSA uses an internal messaging service. Text messages are sent to all credentialed attendees for an Event. There is no need to provide a recipient list.**



# IF YOU NEED ASSISTANCE WHILE ON PROPERTY

---

## **ACCESSING EMS/MEDICAL (EMERGENCY & NON-EMERGENCY)**

- For emergency assistance (24 hours per day), dial 911. The call will be captured by Schuyler County 911 Center and will be directed to WGI 911 Communications for dispatch.
- For non-emergency assistance during hours of operation, go to In-field Care Center. If In-field Care Center is closed, call 911.

## **ACCESSING LAW ENFORCEMENT AND FIRE DEPARTMENT (EMERGENCY OR NON-EMERGENCY)**

- For a fire assistance (24 hours per day), dial 911. The call will be captured by Schuyler County 911 Center and will be directed to WGI 911 Communications for dispatch.

# PIT LANE LOGISTICS

---

- All pit boxes are 21 feet.
- Pit lane distance is 19,533 inches
- Red Data Boxes are NOT steps

## OBLIGATORY PIT STOP TIME

- 120 seconds – Two (2) Drivers
- 123 seconds – Solo (1) Driver

## PIT LANE SUPPORT:

- Located at IMSA Timing Stand on Start/Finish or [IMSATIMING@IMSA.COM](mailto:IMSATIMING@IMSA.COM)

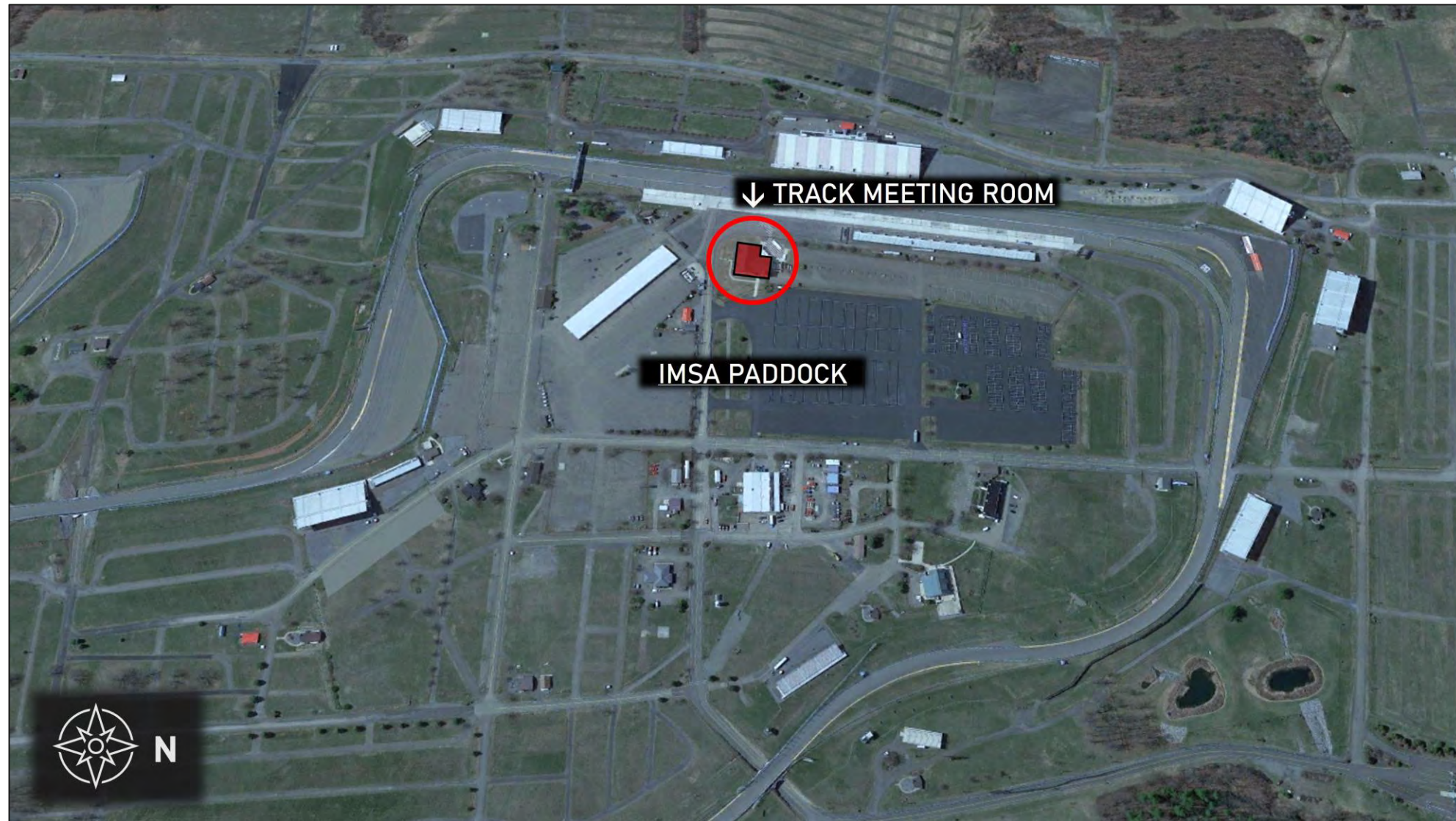


# » TRACK MEETING ROOM



## Notes

- Watkins Glen Track Meeting Room is on the top floor of the Media Center
- Proper credentials required for paddock entry
- Refer to Official Schedule / SR for specific briefing times



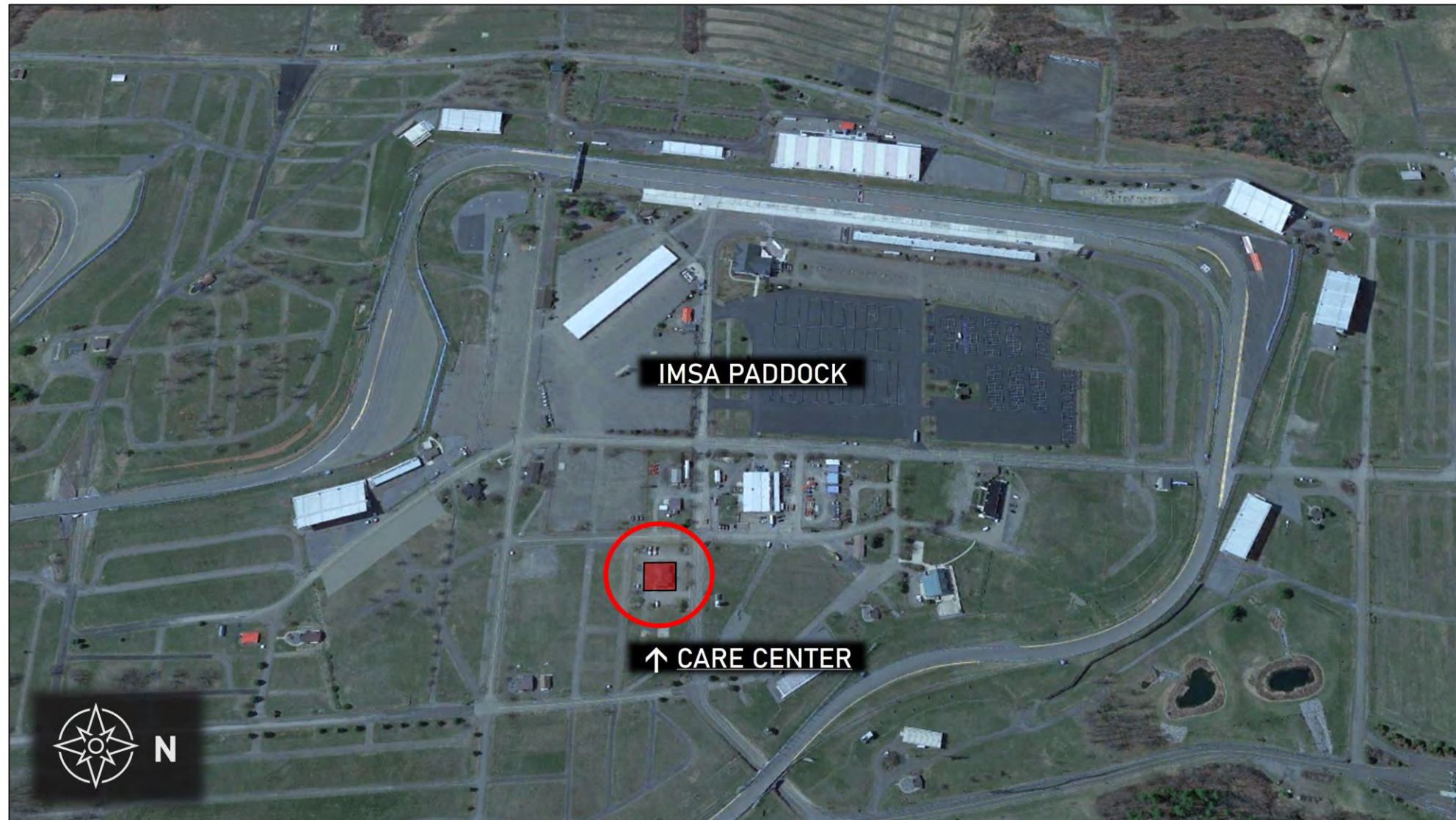


# » CARE CENTER LOCATION



## Notes

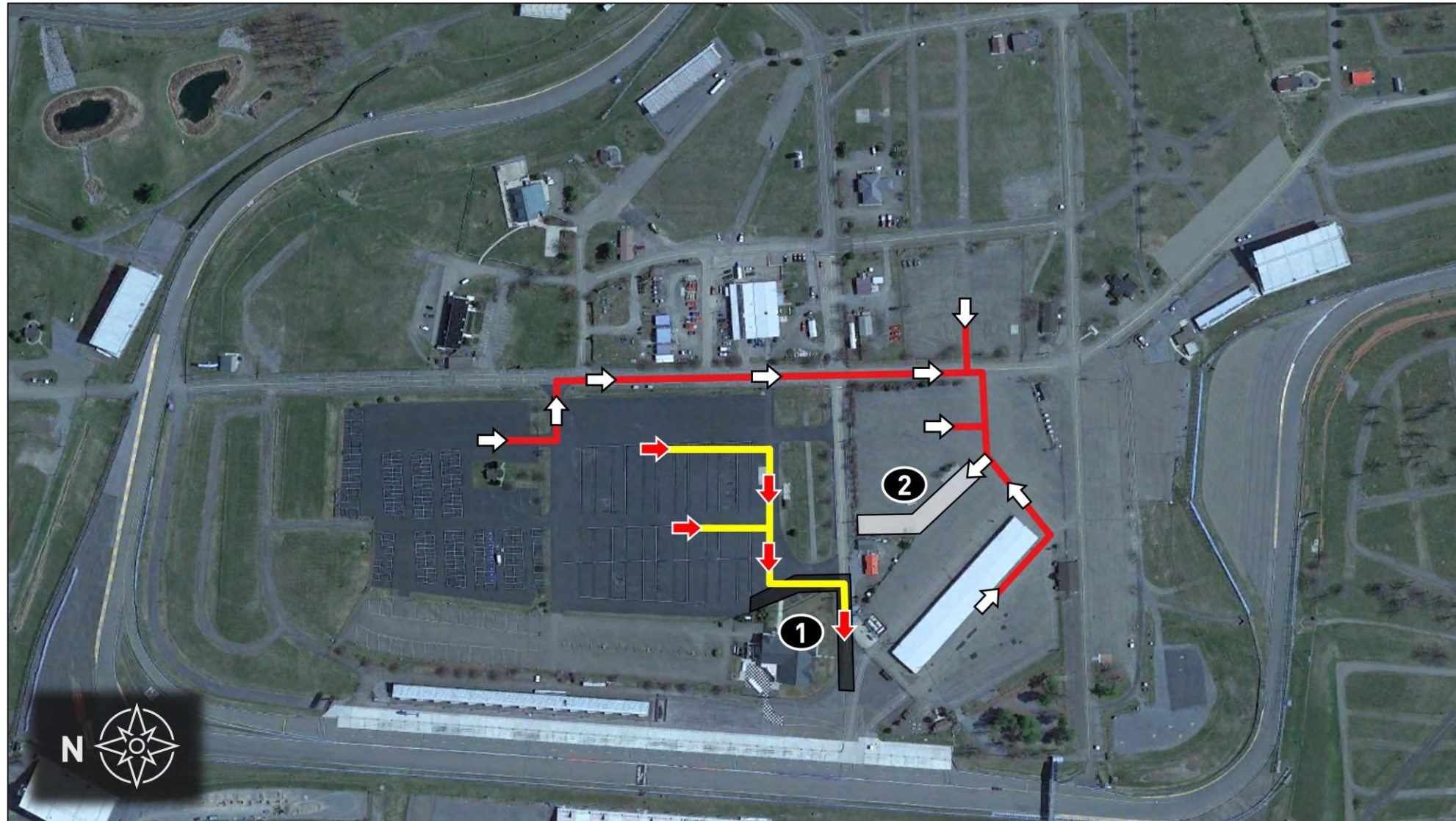
- Care Center is located East of paddocks (red shaded area)
- Refer to Official Schedule / SR for Care Center hours of operation





## Locations

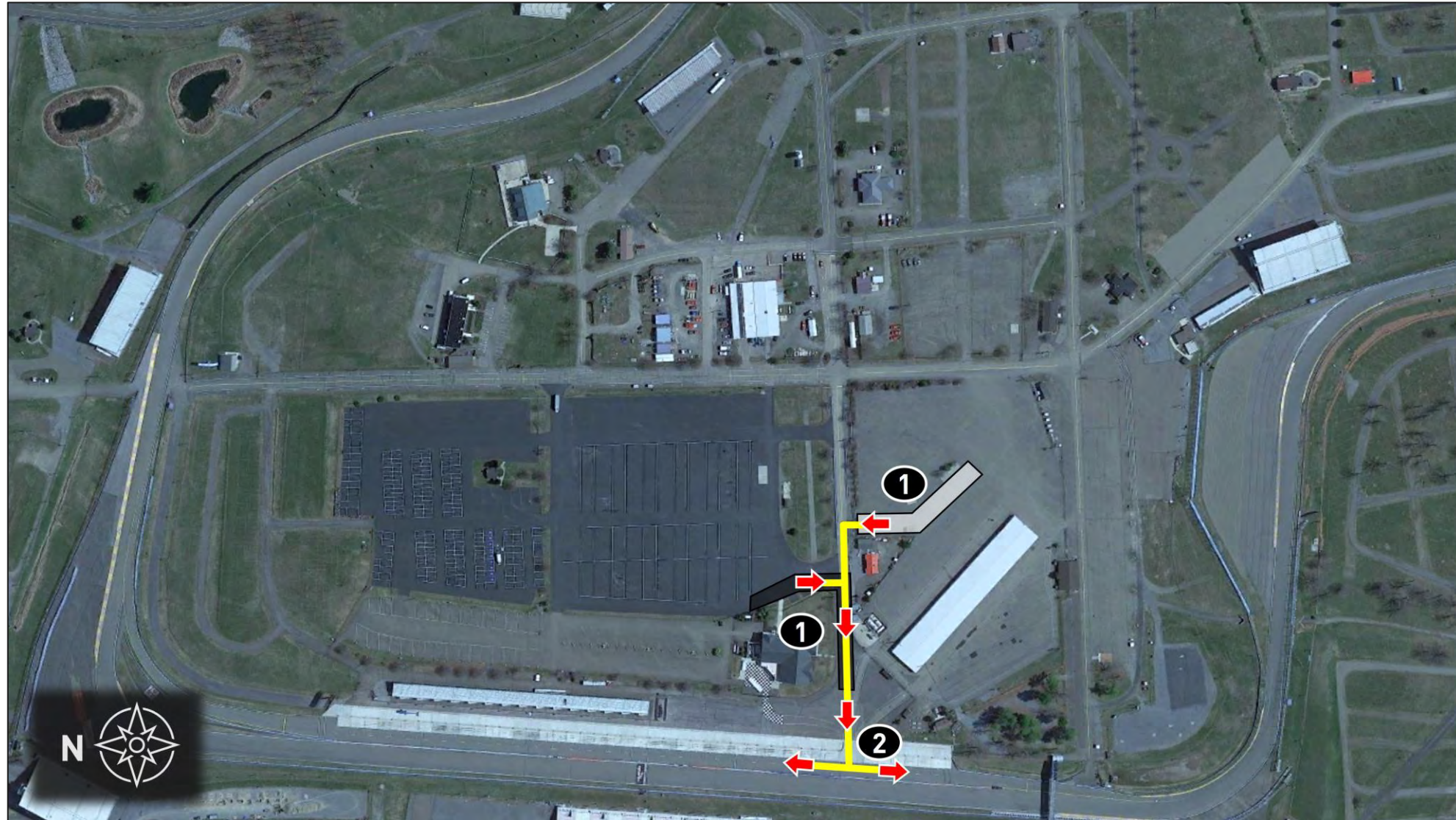
1. False Grid for IMSA WeatherTech SportsCar Championship
2. False Grid for Single-Make (PCCNA, LST, MC) and IMSA Michelin Pilot Challenge





## Directions

1. Exit respective False Grid and proceed to Pit Lane Access Road
2. Enter Pit Lane and proceed to assigned Pit Box. Traffic may proceed in either direction on Pit Lane



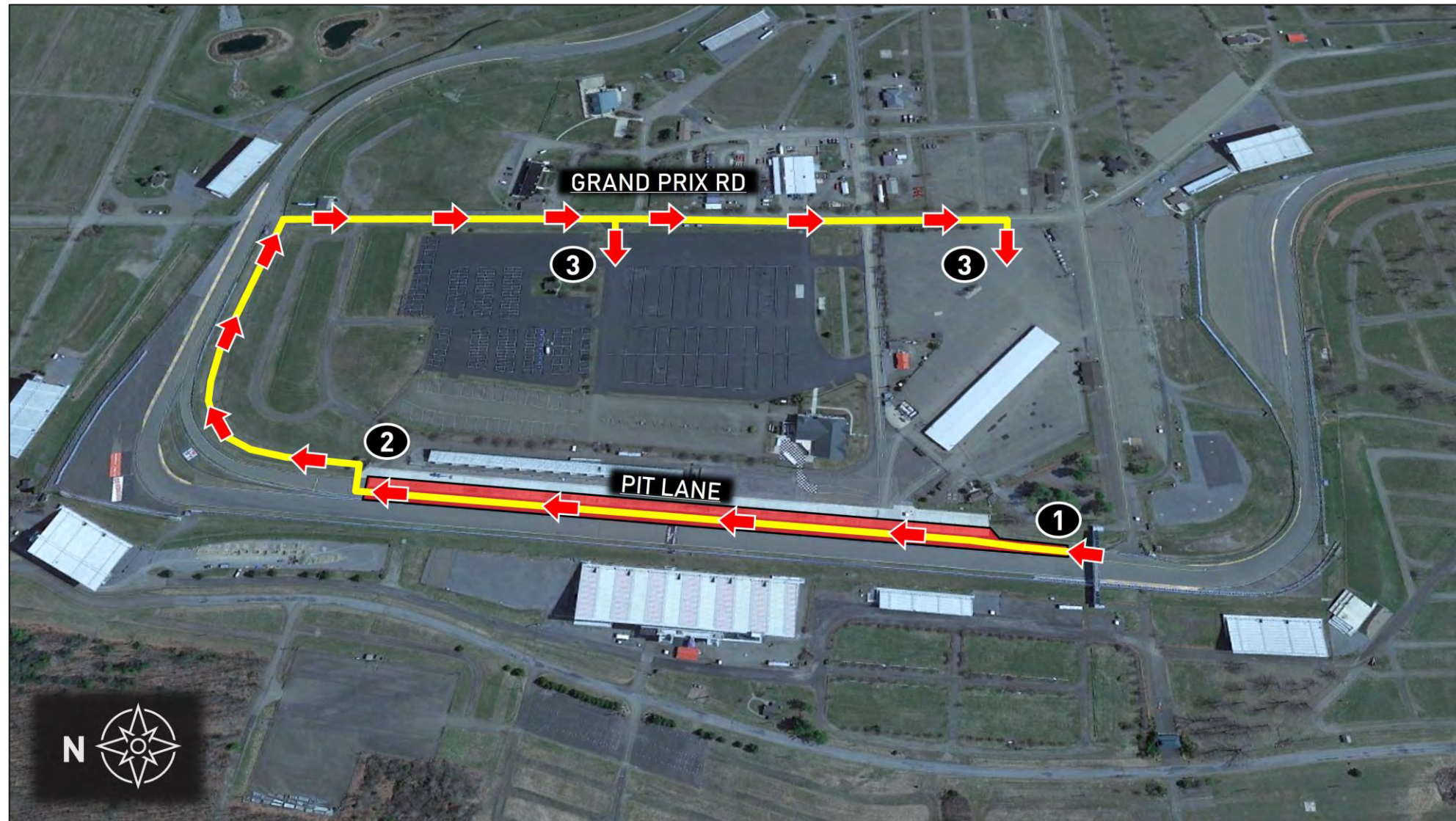


# » PIT LANE TO PADDOCK



## Directions

1. Exit track onto Pit Lane and proceed down Pit Lane
2. Proceed to Paddock Access Road, continuing to Grand Prix Rd
3. Enter designated Paddock





# TRACK SERVICES

## IMSA CHASE VEHICLES

- Chase 1
- Chase 2
- Chase 3
- Chase 4

## ON TRACK ASSISTANCE

- Communication with Track Services Medic
- Neutral and power shut off
- Follow direction on scene Track Services
- Maintain a safe speed and distance when passing on track incidents with Track Services team members on the scene

**Roy Spielmann** (414) 702-0905



# SERIES REQUIRED ELECTRONICS

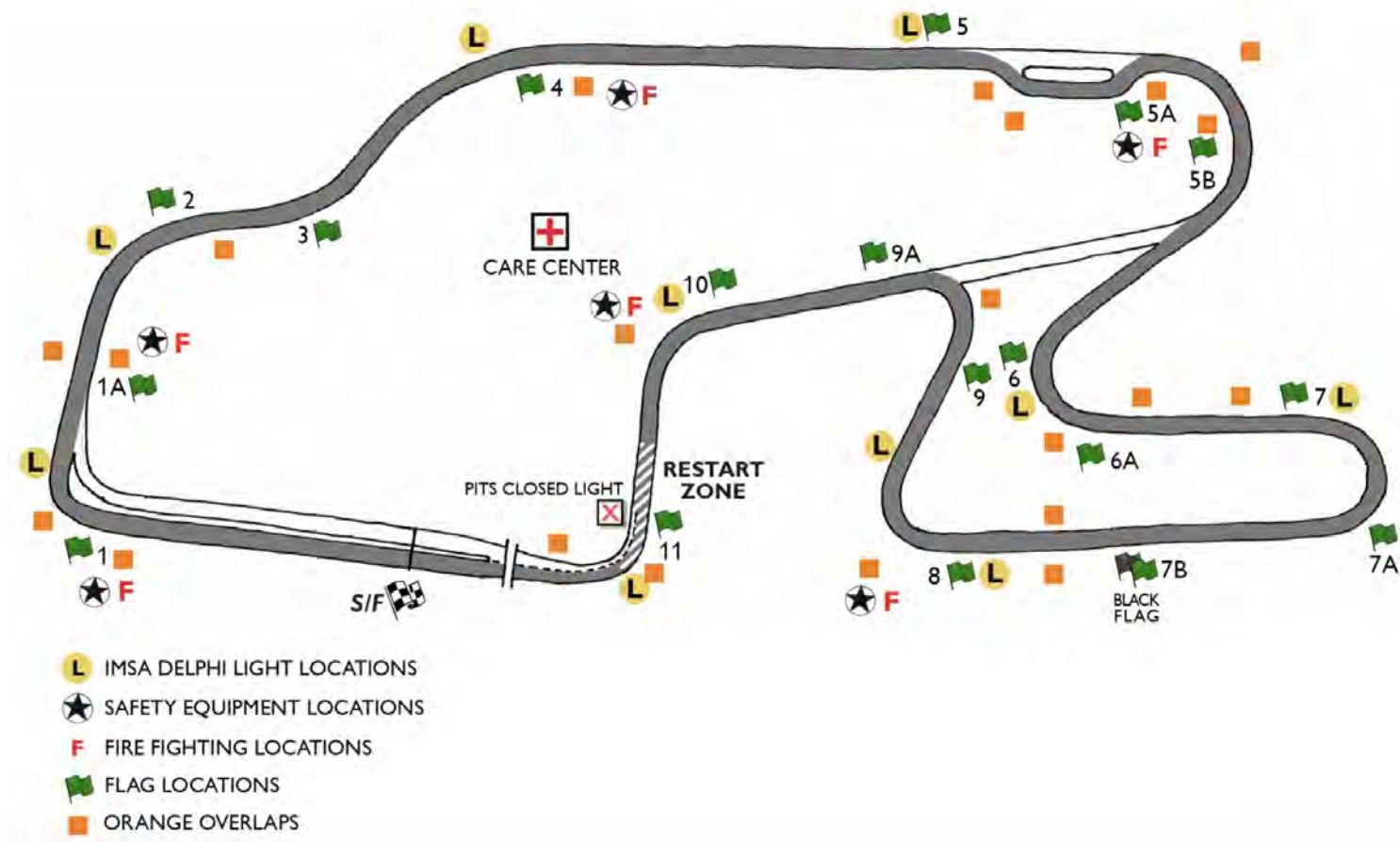
## MANDATORY TRANSPONDER and DRIVER ID EQUIPMENT

- **LST Technical Regulation 12.1:** Transponder TR2 and X2 Driver ID Unit
  - Each car **must be** equipped with the approved timing transponder sold by Official Lamborghini Super Trofeo Spare Parts
  - (4TA919052A + 4TA919052B).
    - A. Kit contains the following components:
      - 1. Transponder TR2
      - 2. X2 Driver ID Unit
      - 3. Power connection cables
      - 4. Transponder Mounting Bracket
- **ANY ENTRANT WITH INCORRECT OR NON-FUNCTIONAL EQUIPMENT WILL BE HELD FROM PARTICIPATION IN ON-TRACK ACTIVITY**

# TRACK MAP

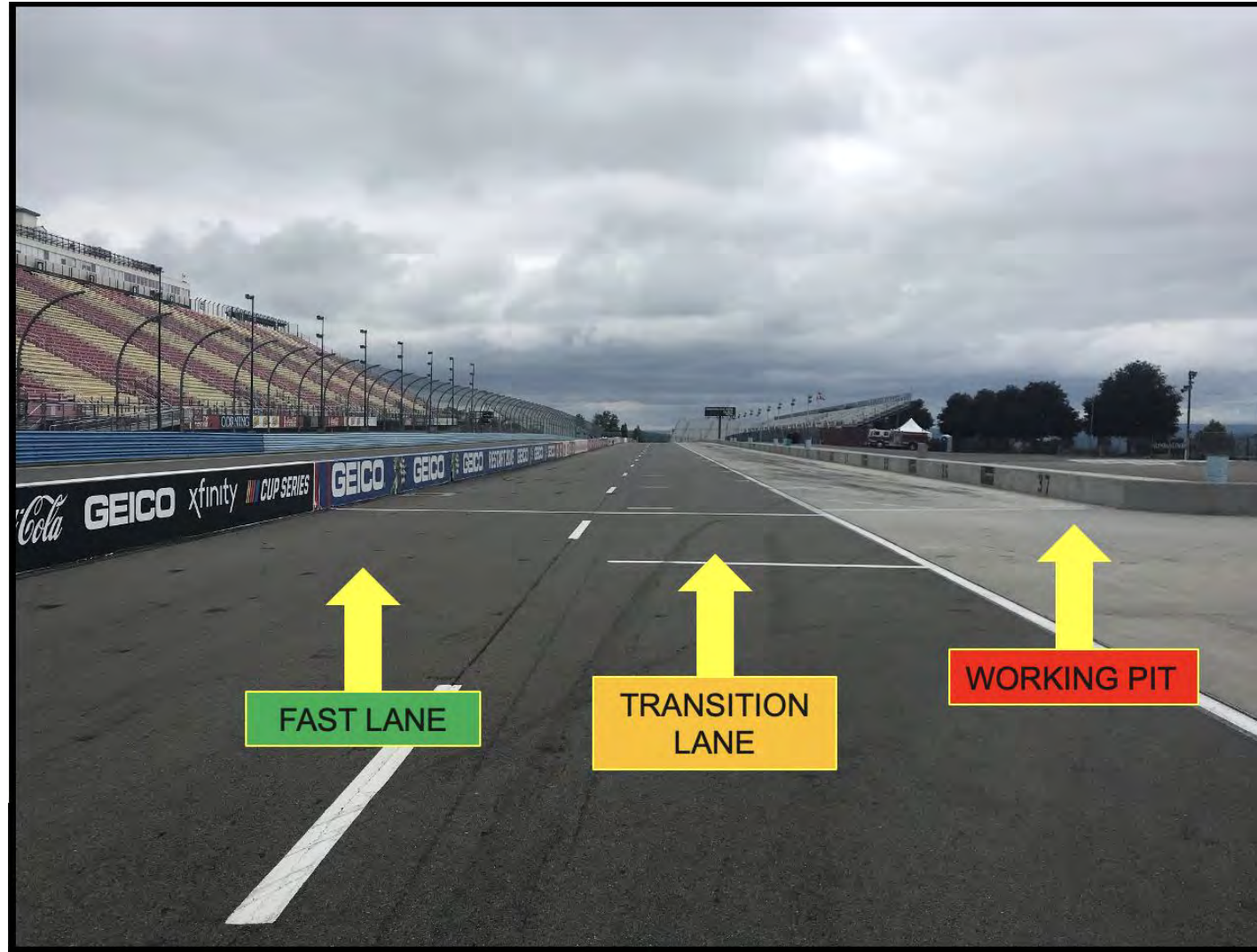


## 2025 SAHLEN'S SIX HOURS OF THE GLEN





# PIT LANE PROTOCOL



# PIT EXIT / PLSL ENDS





# PIT EXIT MERGE

CARS EXITING THE PIT LANE MUST REMAIN  
TWO WHEELS RIGHT OF THE YELLOW LINE

STAY RIGHT TO TURN 2

RESPECT THE SPEED DIFFERENCE OF THOSE  
ALREADY ON TRACK





# ORANGE OVERLAPS



# TRACK LIMITS – T1





# SHORT CUT – T5





# TRACK LIMITS – T8





# TRACK LIMITS – T10





# SHORT COURSE RE-ENTRY



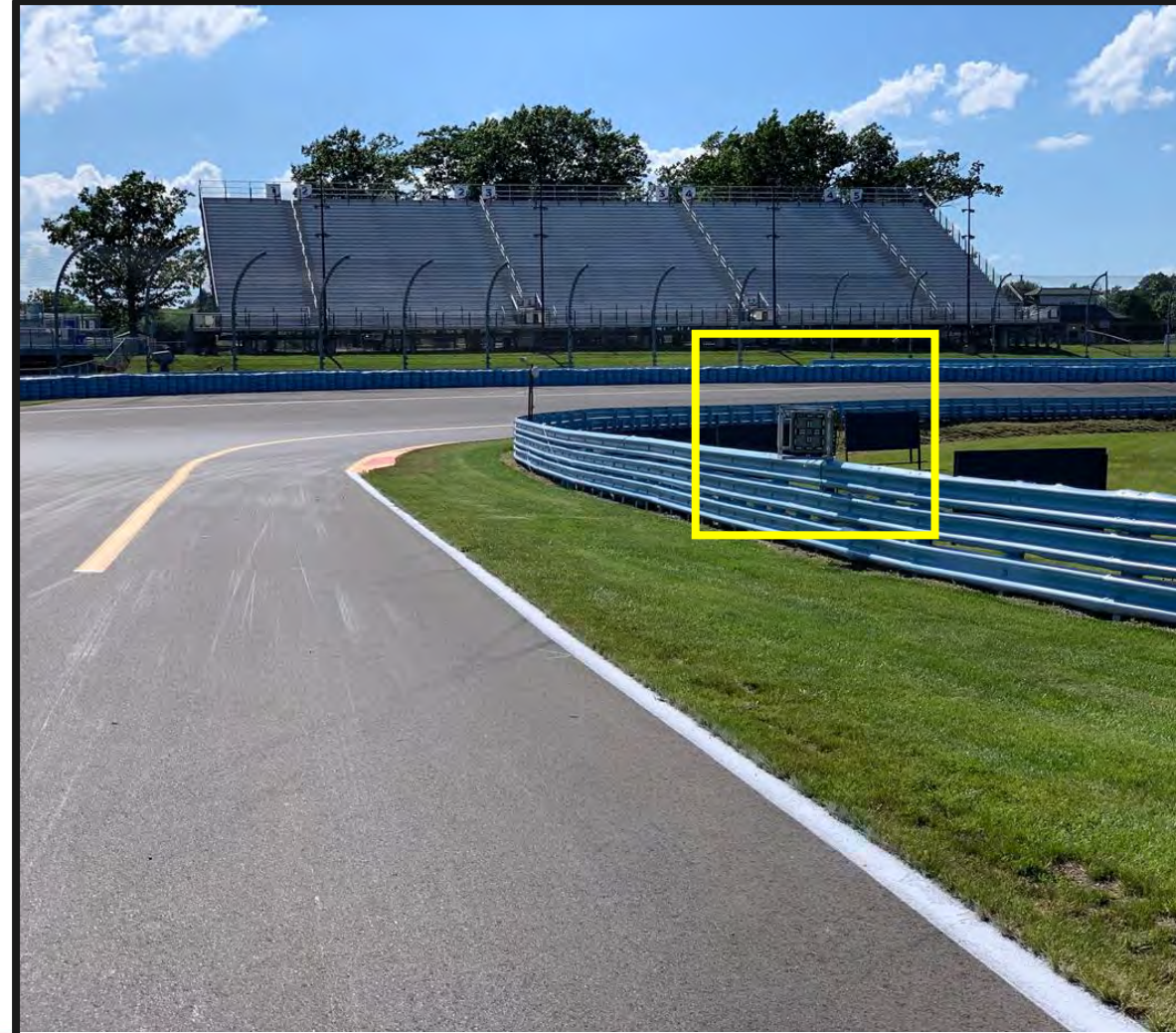
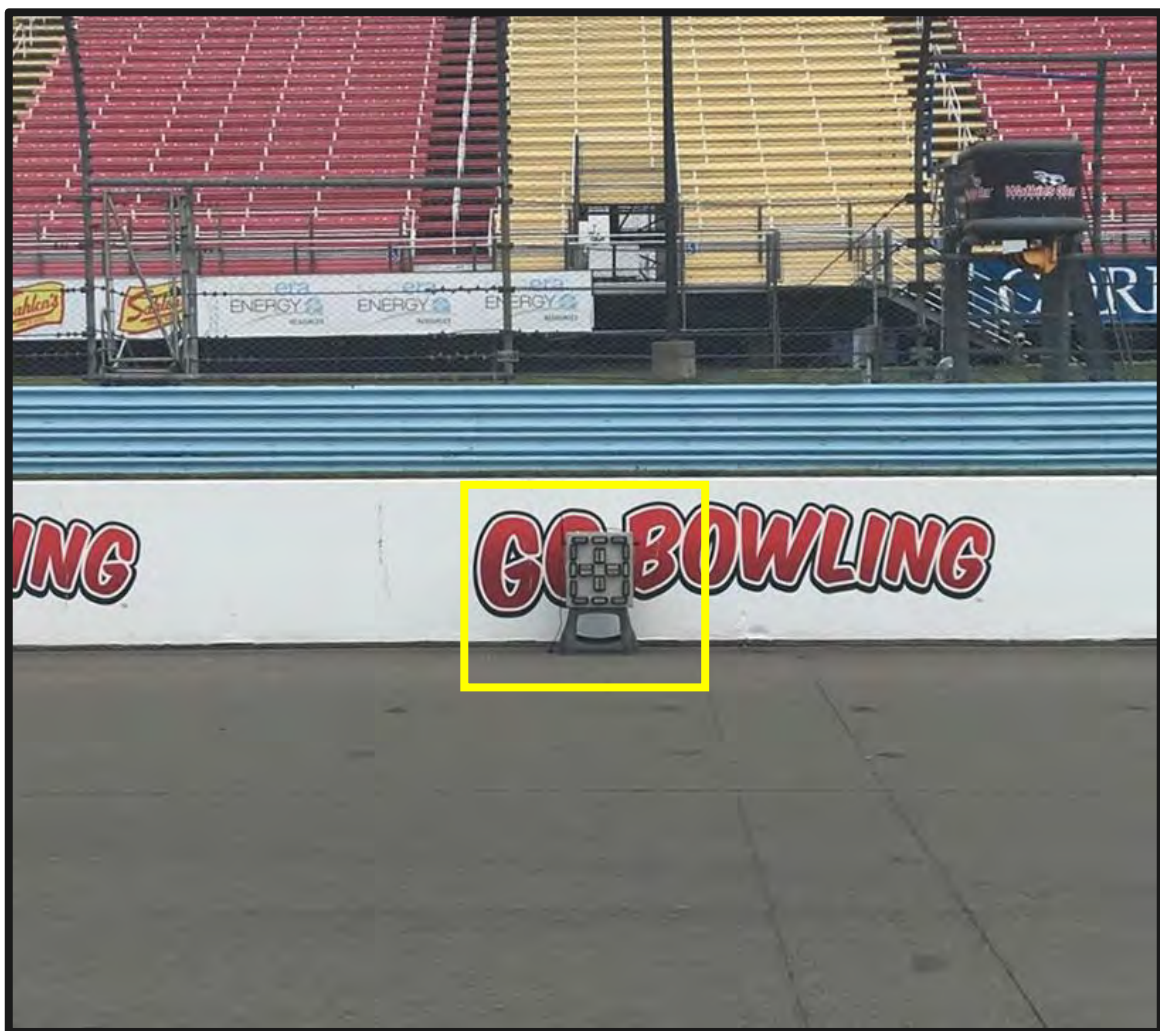


# PIT IN MERGE





# PIT COMMIT / PIT CLOSED LIGHT





# PLSL BEGINS



# RED FLAG / LINING UP...

---

## PRACTICE

- Upon release from false grid, Cars are permitted to line up at pit exit
- During red flags, Cars are permitted to line up at pit exit

## QUALIFYING

- Upon release from false grid, Cars are NOT permitted to line up at pit exit and must go to their Pit Box and wait for the command from RC to release.
- During red flags, Cars are NOT permitted to line up at pit exit and must go to their Pit Box and wait for the command from RC to release.



# RED FLAG DURING PRACTICE

---

29.10.1. (SSR) Red Flag, Practice. Any Driver determined responsible for an incident resulting in a red flag stoppage in a Practice Session **may** be penalized by deletion of the Car's fastest timed lap from Qualifying.

“Responsible for an incident” includes single Car **Driver Error** incidents (stuck in gravel, crash, etc...)

# QUALIFYING

---

- CARS THAT LINE UP AT THE PIT EXIT DURING QUALIFYING ARE HELD UNTIL ALL OTHER CARS PROPERLY IN THEIR PIT BOX HAVE HAD AN OPPORTUNITY TO JOIN THE SESSION AND ARE THEN RELEASED.
- CARS THAT LINE UP AT THE PIT EXIT DURING QUALIFYING AND THAT ENTER THE TRACK prior to release ARE PENALIZED AS BELOW.
- CARS PENALIZED ON TRACK FOR LINING UP OR LEAVING THEIR PIT BOX EARLY MUST SERVE THE PENALTY PRIOR TO REGISTERING ANY LAP TIMES FOR THE PURPOSES OF QUALIFYING POSITION.
- SHORT SESSIONS, WATCH MIRRORS FREQUENTLY ON YOUR IN AND OUT LAPS TO NOT IMPEDE ANOTHER COMPETITOR.



# PIT STOP

---

MINIMUM TIME PIT IN LOOP TO PIT OUT LOOP

- TWO DRIVERS = 120 SECONDS
- SOLO DRIVER = 123 SECONDS

PIT DISTANCE IS 19,533 INCHES

EXTRA TIME IS TO CHECK / BLEED TIRES

DRIVER MUST CHANGE DRIVER ID PLUG BEFORE LEAVING PIT EXIT OR IT WILL NOT REGISTER. INCORRECT DRIVER ID MAY RESULT IN A DRIVE THROUGH TO RECTIFY

DRIVING SLOWER THAN 60kph IN THE FAST LANE MAY BE PENALIZED

TRANSITION LANE SHOULD BE USED IF LESS THAN 60kph TO NOT INTERFERE WITH CARS IN THE FAST LANE

# SUPER TROFEO NORTH AMERICA

DRIVER RACE BRIEFING FRIDAY AT 1:00pm





# SUPER TROFEO NORTH AMERICA

RACE MEETING



SQUADRA CORSE

# PRE-RACE PROCEDURES

---

REFER TO THE MxM



# RACE START

---

- TWO (2) FORMATION LAPS
- RACE CLOCK STARTS FIRST TIME BY
- PACK UP from T7 to T8, PAIR UP T8 to T10
- STAY WITH SAFETY CAR
- SAFETY CAR ENTERS PITS
- No ACCELERATION POINT - steady speed until Green flag displayed
- MUST MAINTAIN COLUMN POSITIONS AND LANES UNTIL CROSSING THE START LINE
- Two Pole sitters remain after meeting
  
- JUMP/FALSE START REVIEWS
  - GAPS
  - TIMED/EARLY ACCELERATION
  - OUT OF LINE
  - COLUMN PASSING

# PROPER START





# PIT STOP

MINIMUM TIME PIT IN LOOP TO PIT OUT LOOP

- TWO DRIVERS = 120 SECONDS
- SOLO DRIVER = 123 SECONDS

PIT DISTANCE IS 19,533 INCHES

## **TIRE CHANGE DURING 60 SECONDS OF PIT STOP – MUST HAVE SIGNS OF FAILURE**

- DRIVER MUST CHANGE DRIVER ID PLUG BEFORE LEAVING PIT EXIT OR IT WILL NOT REGISTER. INCORRECT DRIVER ID MAY RESULT IN A DRIVE THROUGH TO RECTIFY
- DRIVING SLOWER THAN 60kph IN THE FAST LANE MAY BE PENALIZED
- TRANSITION LANE SHOULD BE USED IF LESS THAN 60kph TO NOT INTERFERE WITH CARS IN THE FAST LANE

# MANDATORY PIT STOP

1. No respect of the time between the two pit lane timing loops under the published time (Art. 41). If the driver stays in the pitlane for a time that is less than (or equal to) 1 “seconds respect to the minimum time imposed, the driver will receive a time penalty equal to three times time period not respected. If the driver stays in the pitlane for a time that is more than 1 “seconds less than the minimum time imposed, the driver will receive a penalty equal to Drive Through.
2. All stopping or driving at an abnormally slow speed, lower than 55 kph after the pit stop carried out at the designated Pit/Area: Drive-Through;
3. All speeding over the limit of 60 kph in the pit lane: Drive-Through;
4. Start of the obligatory pit stop outside the obligatory times (Art. 41): Drive- Through penalty.

However, should any of the penalties under 1) to 4) above be imposed and notified during the last 5 minutes or the 3 last laps, or after the end of the race, a 30-second time penalty shall be added to the elapsed time of the car concerned in cases 2) and 3) and a time penalty of 30 seconds plus the original Stop & Go Penalty in cases 1) and 4).

- Pit Entry is closed under FCY during the Pit Stop Window
- No Mandatory Pit Stop = Stop and Go plus the original minimum pit time
- Crew on the hot side of Pit Lane, Engine off during Pit Stop!



# FULL COURSE YELLOW

**Race control radio, in-car lights, trackside lights, double yellow flags displayed**

**Safety VEHICLES may begin to move as soon as FCY is ANNOUNCED**

**Leader to safety car speed, all cars pack up**

- **respect the area of incident/Track Services personnel**
- Safety Car dispatches from pit exit
- RC instructions regarding track condition over radio

**Lights out by turn 9**

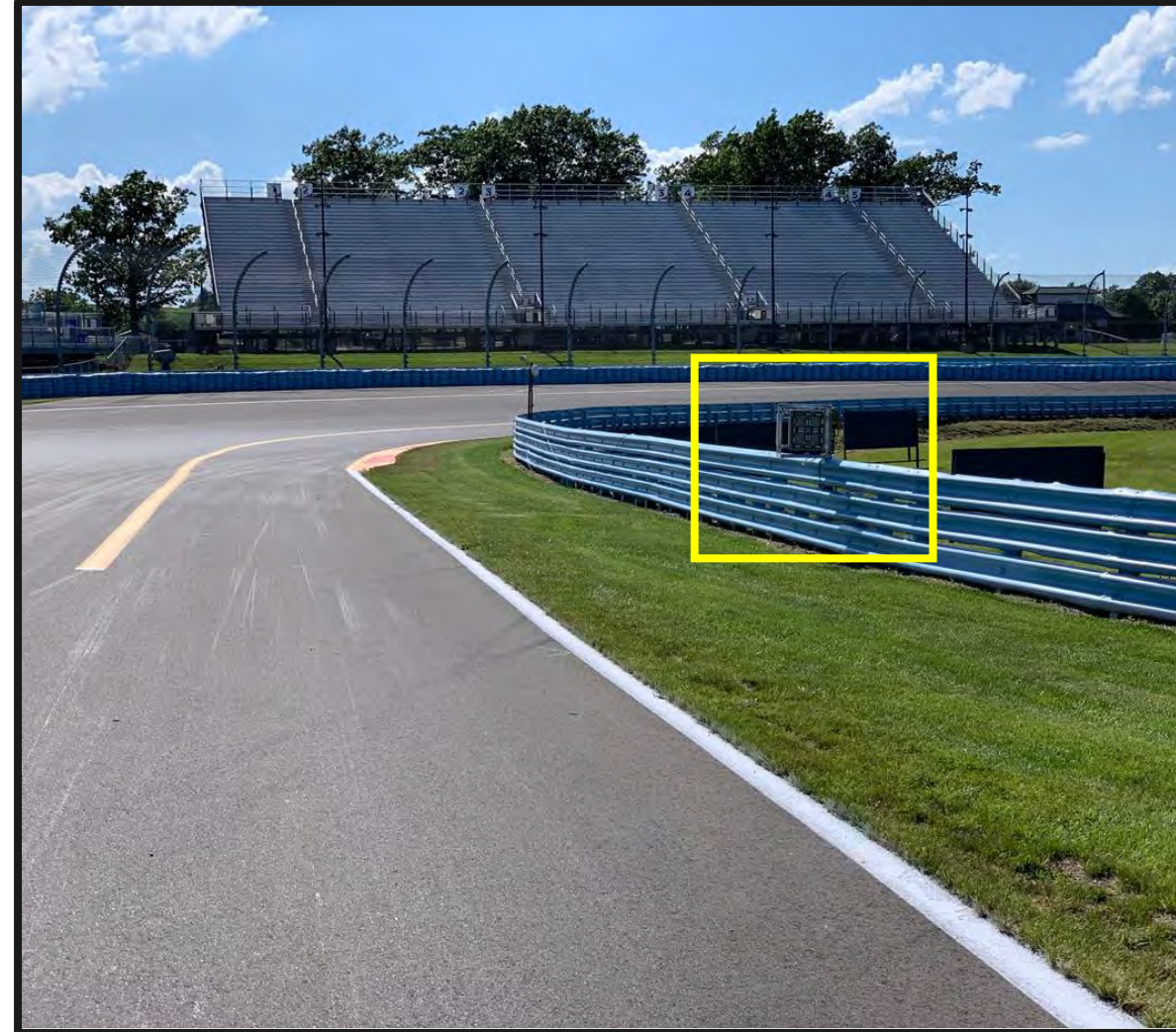
- Maintain SC speed, let SC get away
- *No tire scrubbing after lights out on Safety Car*

**Restart Acceleration zone – Turn 11**

- Passing can occur at the display of green flag
- Expect restarts to be faster than original start

# PIT COMMIT / PIT CLOSED LIGHT

- MUST HAVE PART OF CAR TOUCHING, OR BE TO THE RIGHT OF THE YELLOW LINE THAT DIVIDES THE RACETRACK FROM PIT ENTRY PRIOR TO THE PIT CLOSED LIGHT ILLUMINATING IN ORDER TO BE CONSIDERED COMMITTED TO THE PITS
- PIT LANE SPEED LIMIT BEGINS AT RED PYLONS





# ON TRACK

---

- **LOCAL YELLOWS**
  - No passing
  - Slow to a safe speed
- **BLOCKING / DEFENDING INCREASE RESPONSIBILITY**
  - Proactive vs. Reactive
  - Race how you would like to be raced
- **COEXISTENCE – MULTI CLASS RACING**
  - Awareness
  - Coexist
  - Blue Flags / Car being passed be consistent!

# ORANGE OVERLAPS





# TRACK LIMITS

---

- POSITION ADVANTAGE
- TIME ADVANTAGE
- REPEAT OFFENDERS
  - Warning
  - Final Warning
  - 10 Sec. time penalty

# ADDITIONAL PENALTIES

---

- **Race Control may impose larger than D.T. penalties for Incident Responsibility**
  - Stop and Go
  - Stop and Hold
- **10 Second Penalty**
  - The Race Director may apply a 10 second time penalty
  - Potential applications:
    - Jump start
    - PUY after the incident but before green flag
    - Incident responsibility that resulted in no change of position
  - 10 second penalties are applied as the penalized Car crosses Start/Finish at the Checker
  - The 10 second penalty is intended to increase the range of penalty options in sprint races



# RACE ENDS UNDER FCY

---

ART. 37.1.8. Should the Race end under Full Course Yellow (FCY) conditions, Cars must maintain the Safety Car speed until crossing the Finish Line at the checkered flag. Cars must remain in single file and maintain a consistent gap of approximately two (2) Car lengths to the Car in front of them. Any gamesmanship or manipulation of the pace or procedure is prohibited and may be penalized.

# WET WEATHER PROTOCOLS

---

- RACE STARTS DRY AND GOES WET
  - WE WILL GO FCY AND BRING THE ENTIRE FIELD IN TO CHANGE TO WETS
- IF SESSION / RACE IS DECLARED WET ALL CARS START ON WET TIRES
  - TEAM CHOICE IF OR WHEN TO GO TO DRY TIRES
  - CAN NOT CHANGE TIRES DURING THE MANDATORY PIT STOP WINDOW



# WET TIRE CHANGE PROCESS

---

If Race is not started as declared 'Wet', the following process is used:

- Race Control announces FCY and deploys Safety Car to collect the field.
- The running order of the Cars is taken at S/F for all Cars.
- After all Cars have crossed S/F but before arriving at the pit entry, Race Control declares Red Flag.
- The Race Director declares the Race 'Wet'.
- The Safety Car leads the field into the pit lane.
- Cars are directed to their pit boxes for the exclusive purpose of changing to wet tires, no other work.
- Teams are given Five (5) minutes to change tires.
- Cars unable to continue must inform their Pit Official.
- The Pit Officials will call the order of the Cars as taken at S/F to release from their pit box one at a time and proceed on track behind the Safety Car.
- Changes to the running order in case of any misfortune after crossing S/F are restored for the restart.
- A 'confirmation lap' is performed to check the order of the Cars and to direct any necessary changes.
- The Race is resumed from FCY as normal.

# POST RACE

---

Refer to MxM



# SUPER TROFEO NORTH AMERICA

BEST OF LUCK TO ALL!

