



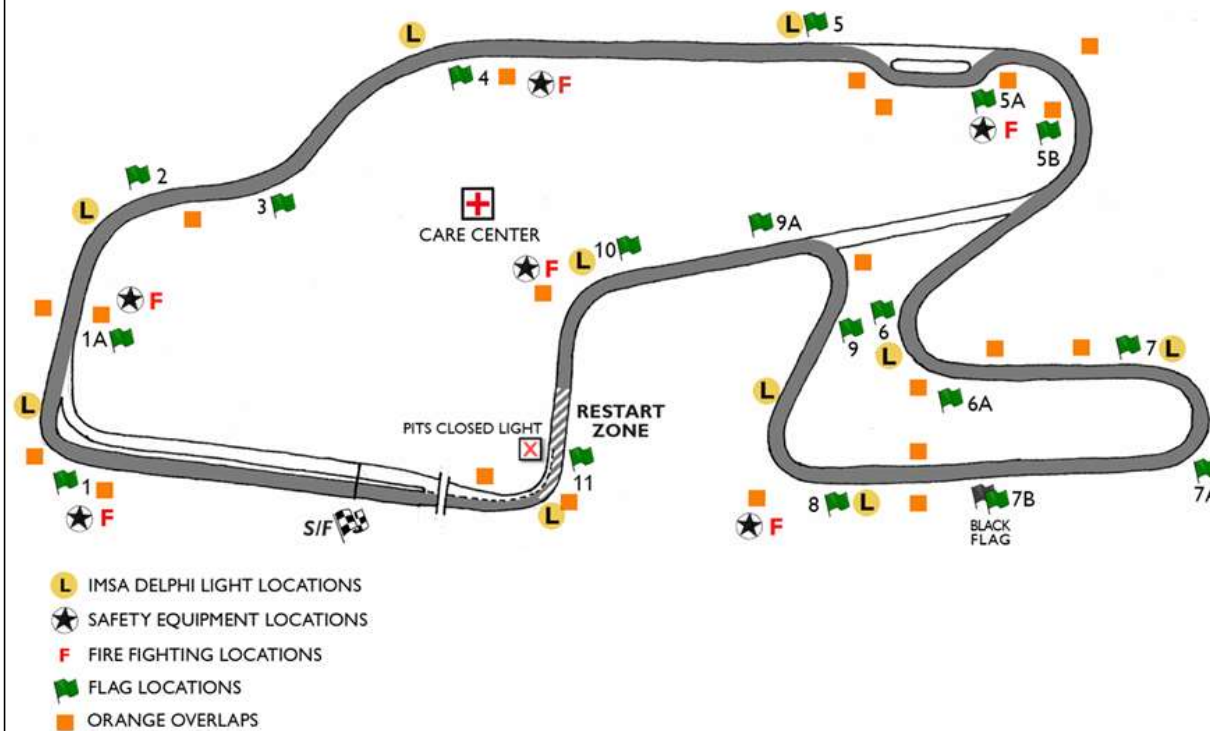
2025 EVENT MAPS



» TRACK MAP



2025 SAHLEN'S SIX HOURS OF THE GLEN



» TO IMSA TRANSPORTER STAGING

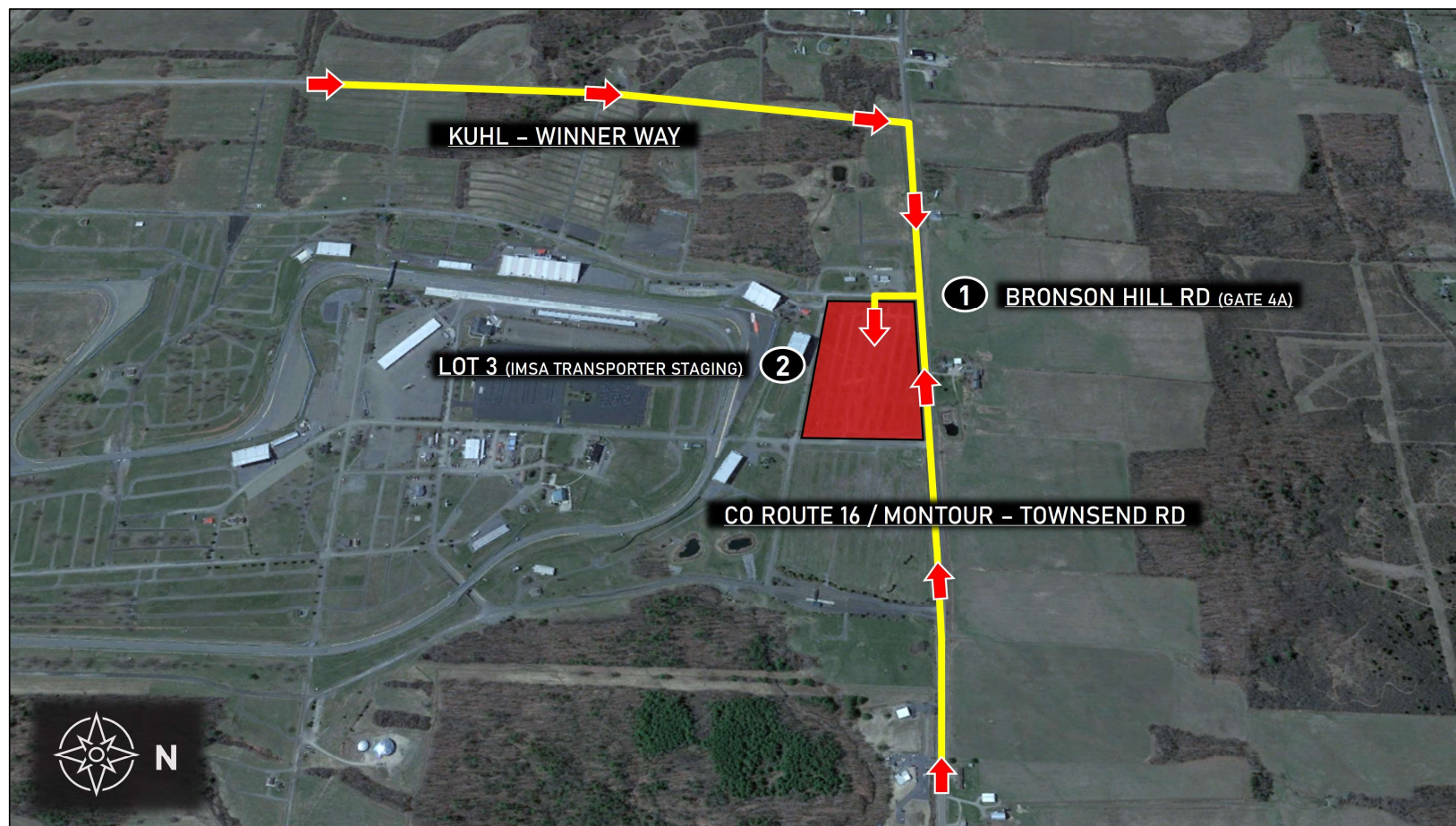


Directions

1. Take County Route 16 (Montour-Townsend Rd) to Bronson Hill Rd (Gate 4A)
2. Take first left to enter Lot 3 & IMSA Transporter Staging (red shaded area)

Notes

- Pre-Staging and Staging will be available in Lot 3
- See Official Schedule / SR for detailed Staging and Load-In times
- Address: 1999 Bronson Hill Rd, Watkins Glen, NY 14891



» TO IMSA REGISTRATION

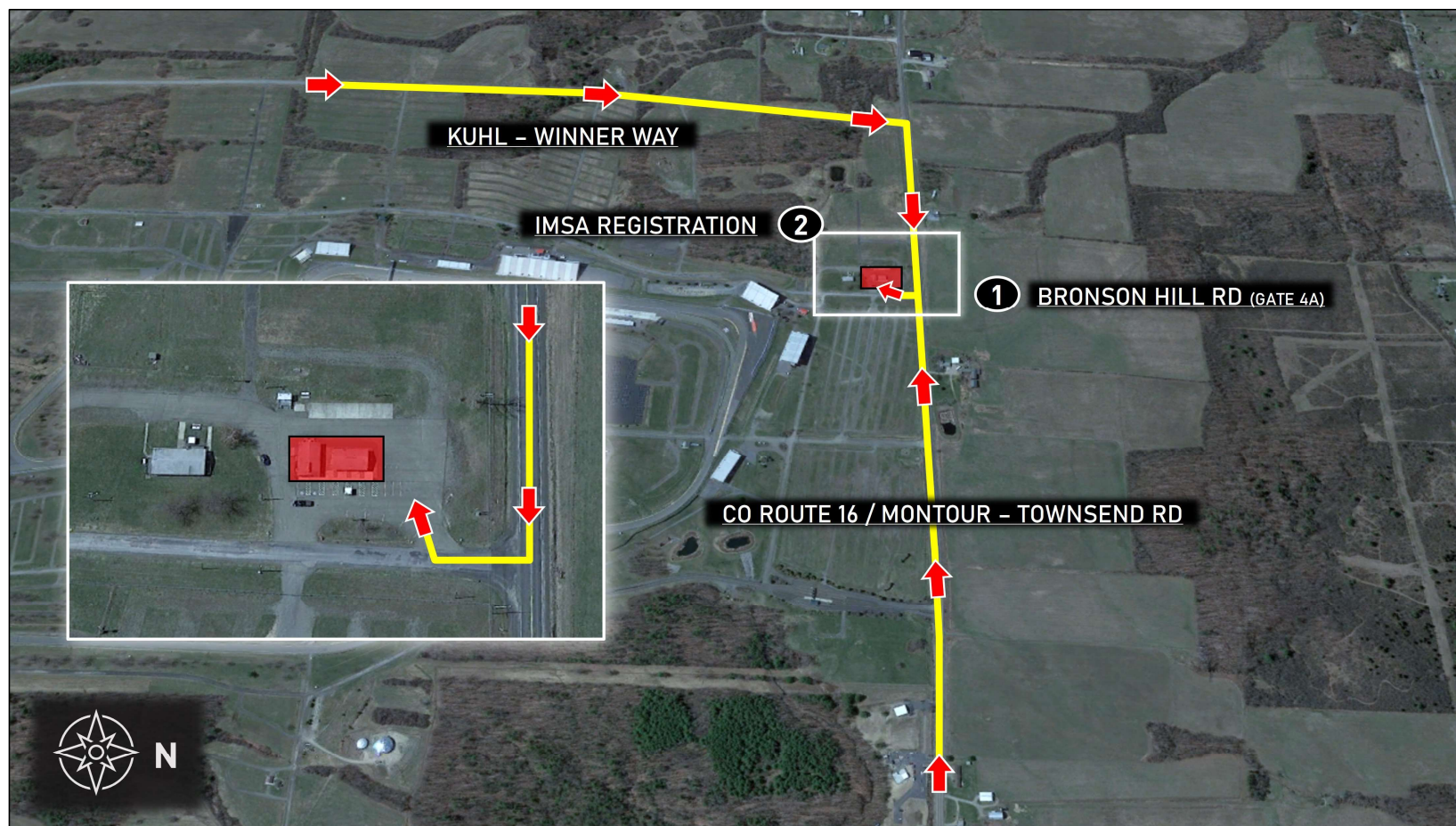


Directions

1. Take County Route 16 (Montour-Townsend Rd) to Bronson Hill Rd (Gate 4A)
2. Take first right and follow signage to IMSA Registration (see inset photo)

Notes

- Refer to Official Schedule / SR for Registration hours of operation
- Address: 1999 Bronson Hill Rd, Watkins Glen, NY 14891



» TO IMSA INFIELD PARKING

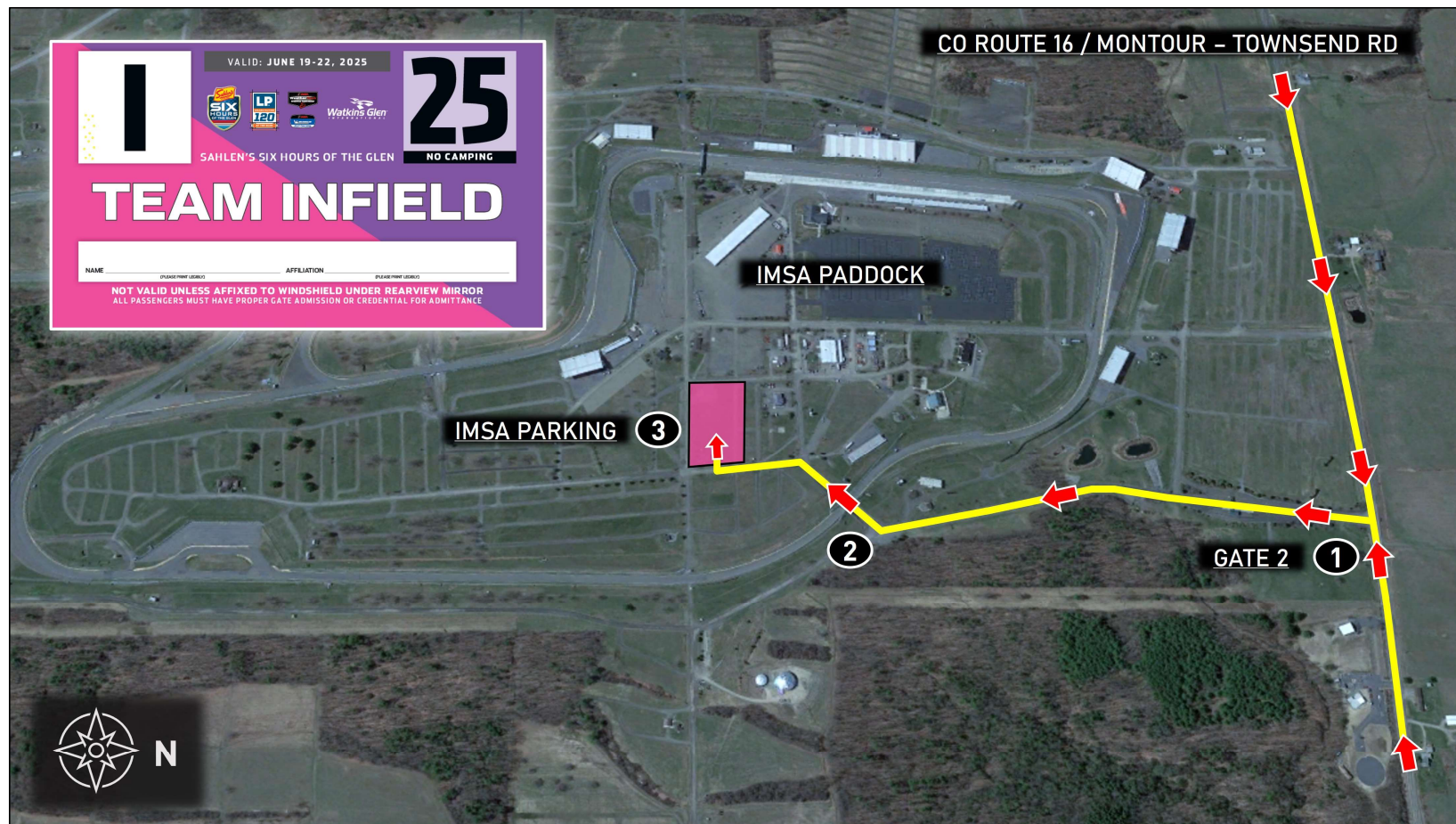


Directions

1. Take County Route 16 (Montour-Townsend Rd) to Watkins Glen Gate 2
2. Proceed through tunnel and take first left
3. Proceed to designated IMSA Infield Parking area (pink shaded area)

Notes

- Proper track-issued parking pass required for entry
 - Valid from Thu., 6/19 - Sun., 6/22



» TO IMSA LOWER INFIELD PARKING

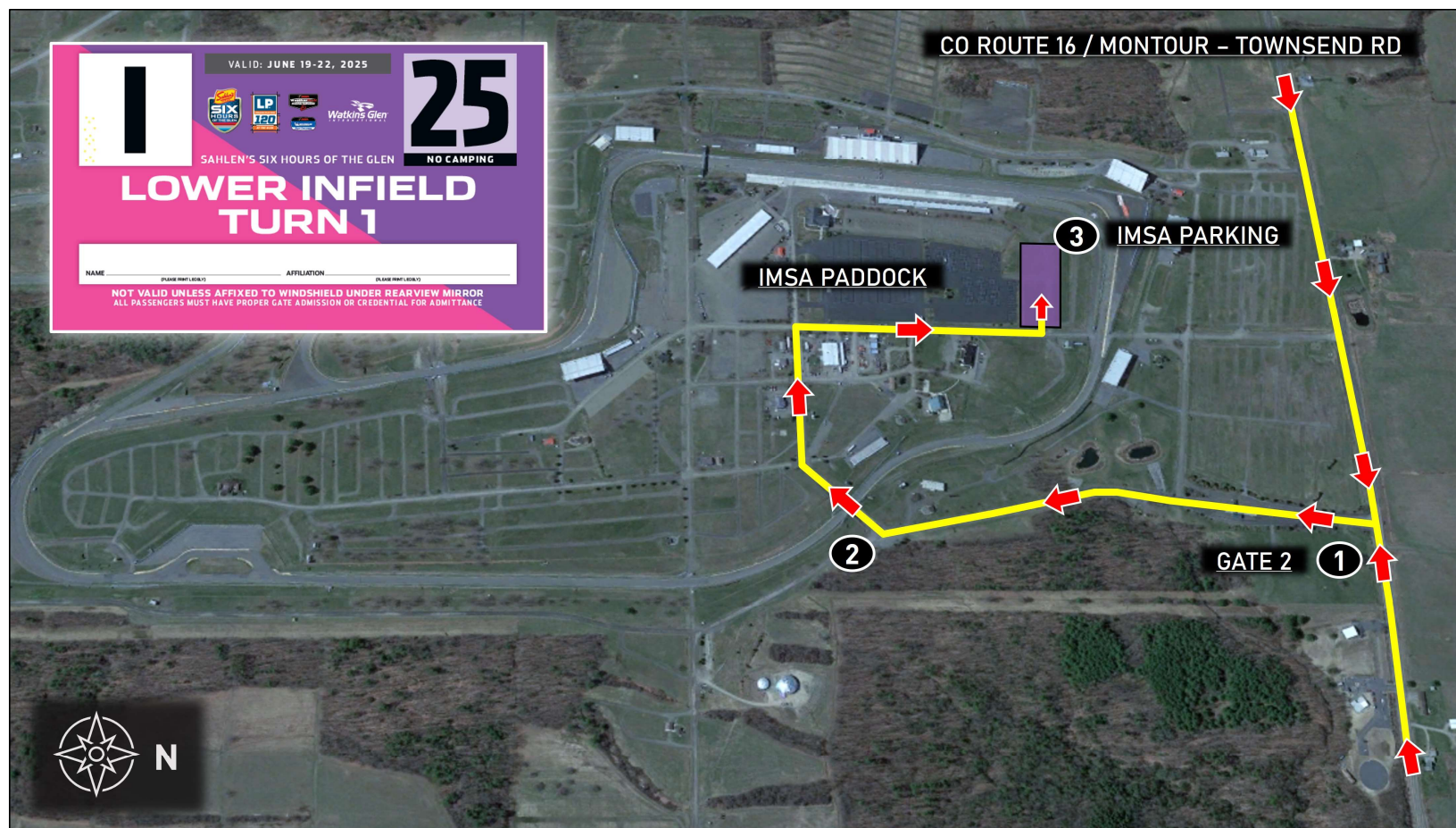


Directions

1. Take County Route 16 (Montour-Townsend Rd) to Watkins Glen Gate 2
2. Proceed through tunnel and through infield
3. Proceed to designated IMSA Lower Infield Parking area (purple shaded area)

Notes

- Proper track-issued parking pass required for entry
 - Valid from Thu., 6/19 - Sun., 6/22



» TO IMSA GATE 5 PARKING

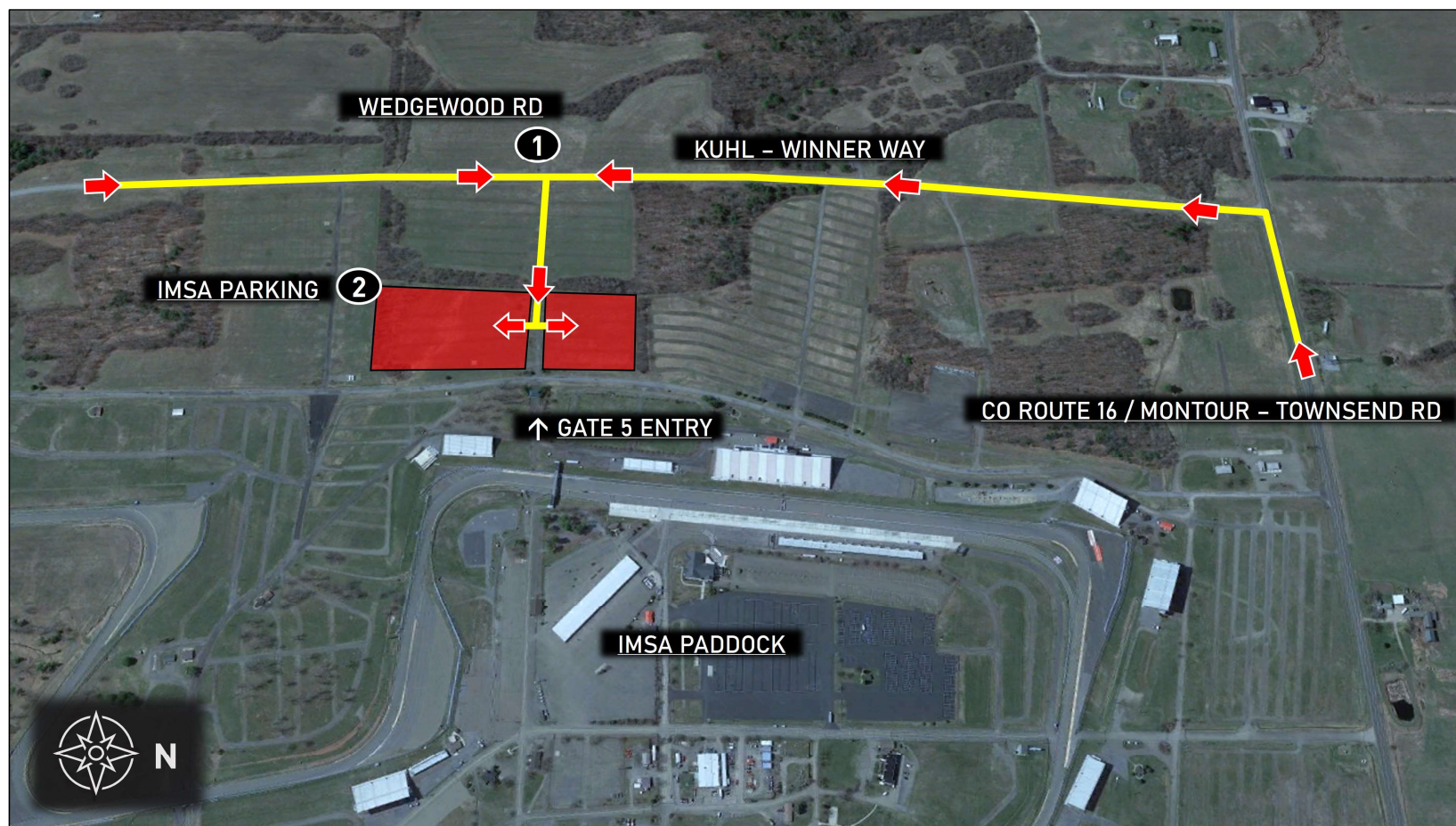


Directions

1. Take Kuhl-Winner Way to Wedgewood Rd
2. Proceed to designated IMSA Gate 5 Parking area (red shaded areas)

Notes

- IMSA annual hangtag or proper track-issued parking pass required for entry
 - Valid from Thu., 6/19 - Sun., 6/22
- Use Gate 5 and Walkover Bridge to access IMSA paddock areas
- Gate 5 entry will be closed daily from 12:00 AM - 5:30 AM. Contact WGI Security for after-hours access



» TO RESERVED TEAM PARKING

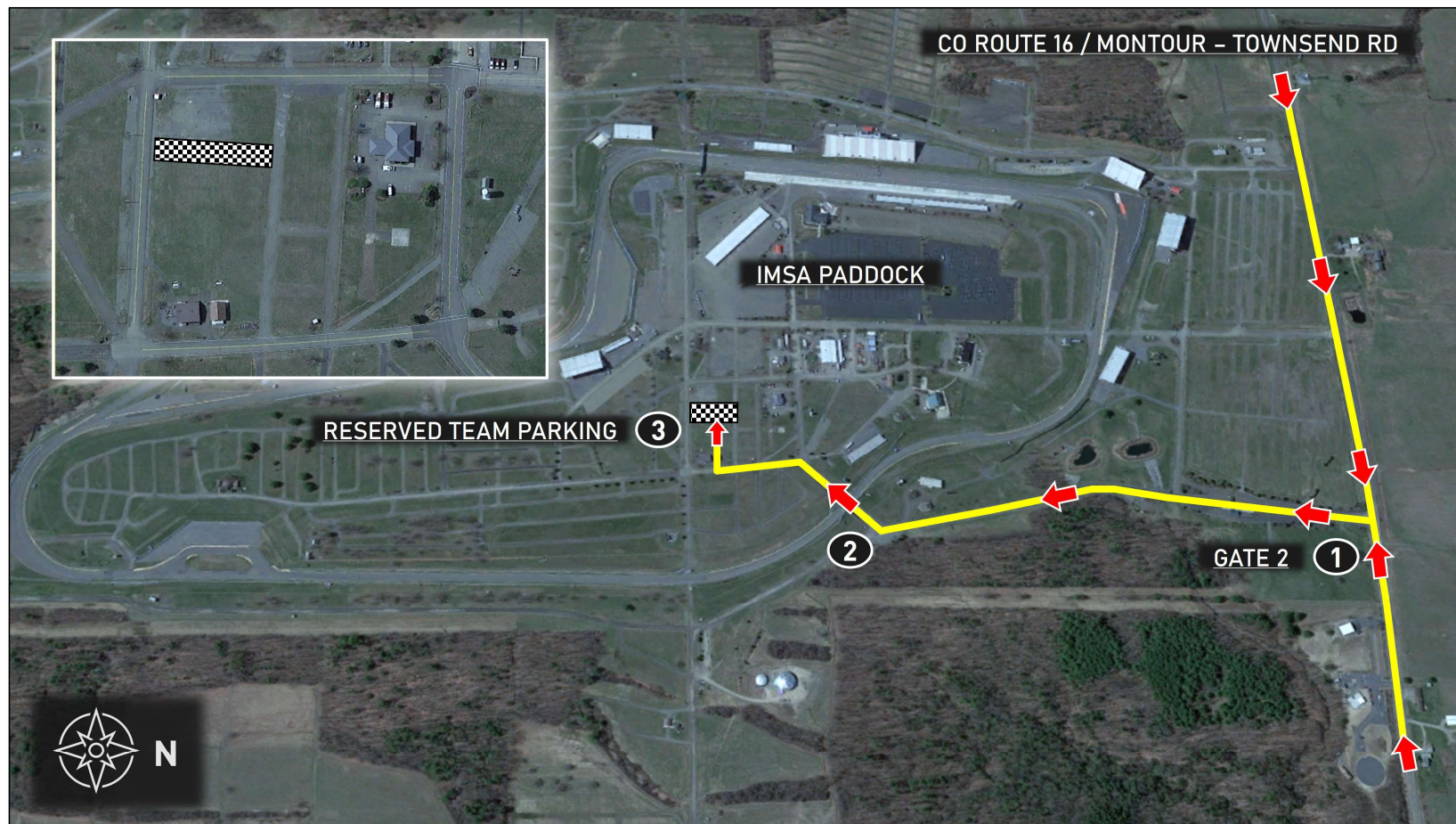


Directions

1. Take County Route 16 (Montour-Townsend Rd) to Watkins Glen Gate 2
2. Proceed through tunnel
3. Proceed to designated Reserved Team Parking area (checkered shaded area)

Notes

- Race Winners / Akin Award parking decal, affixed to window, required for entry / parking
- Reserved Team Parking applies to:
 - GTP & GTD PRO winners from Detroit
 - LMP2 winners from Sebring
 - GTD winners & highest placing GTD Bronze driver from Laguna Seca

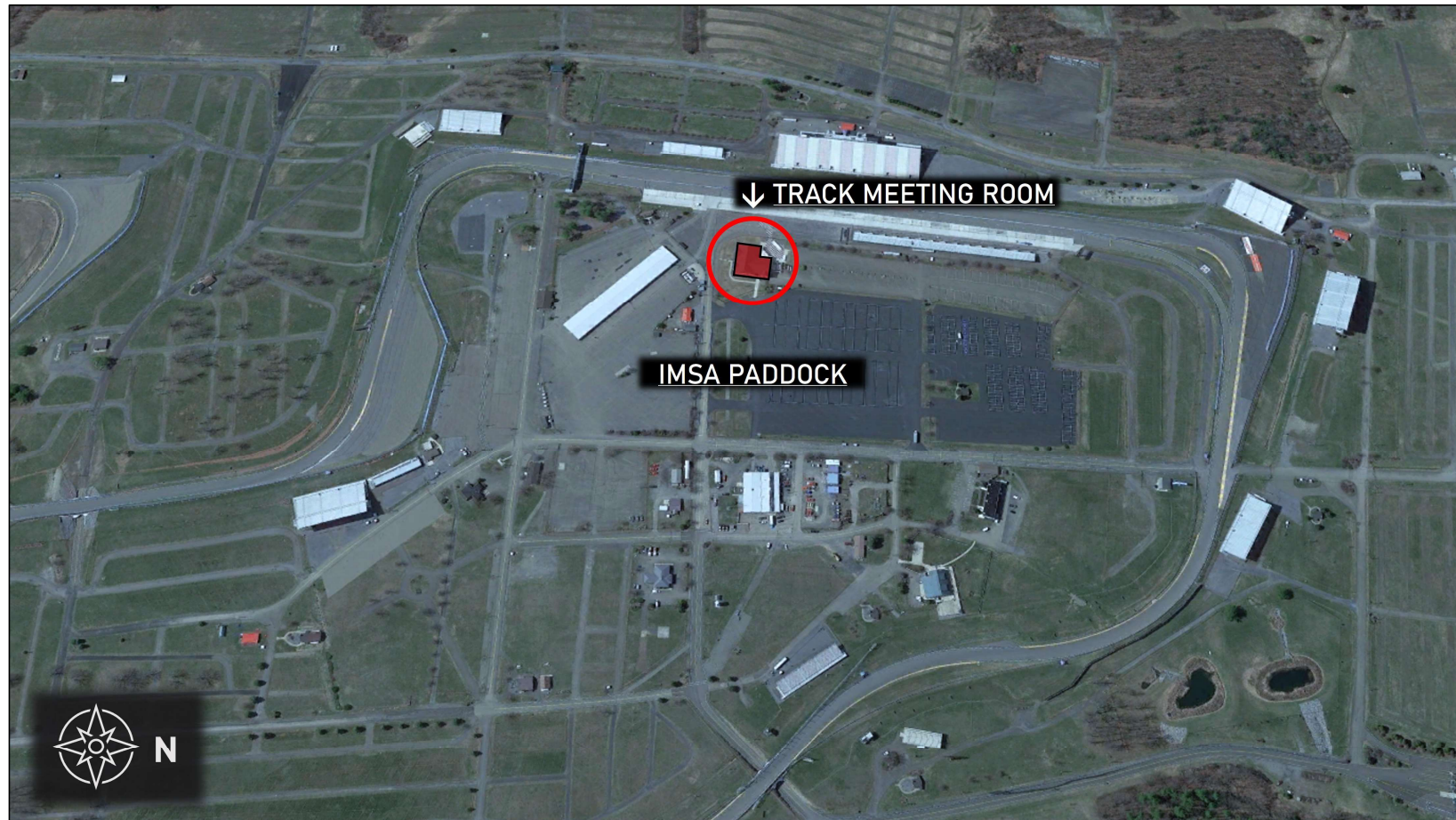


» TRACK MEETING ROOM



Notes

- Watkins Glen Track Meeting Room is on the top floor of the Media Center
- Proper credentials required for paddock entry
- Refer to Official Schedule / SR for specific briefing times

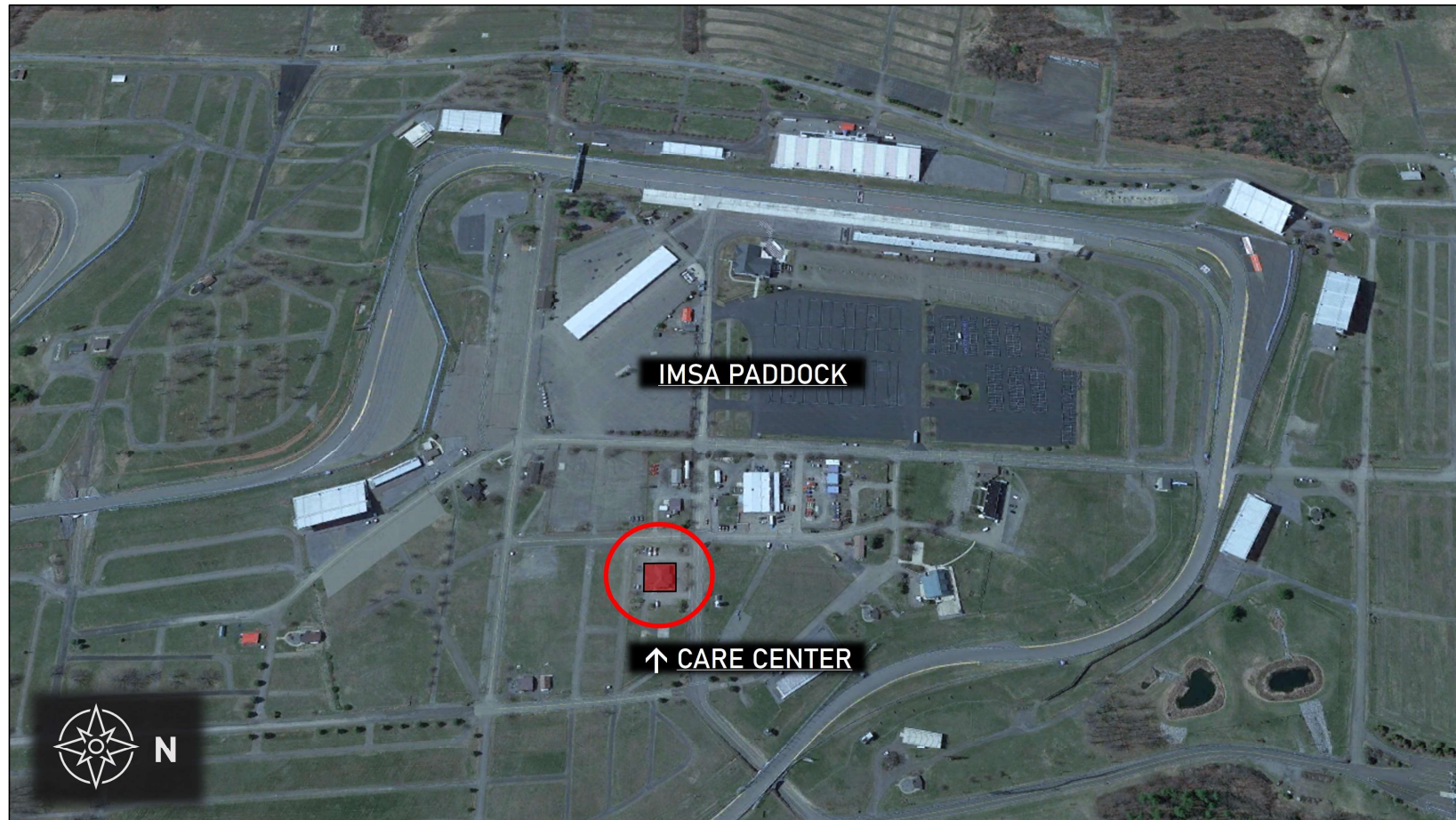


» CARE CENTER LOCATION



Notes

- Care Center is located East of paddocks (red shaded area)
- Refer to Official Schedule / SR for Care Center hours of operation

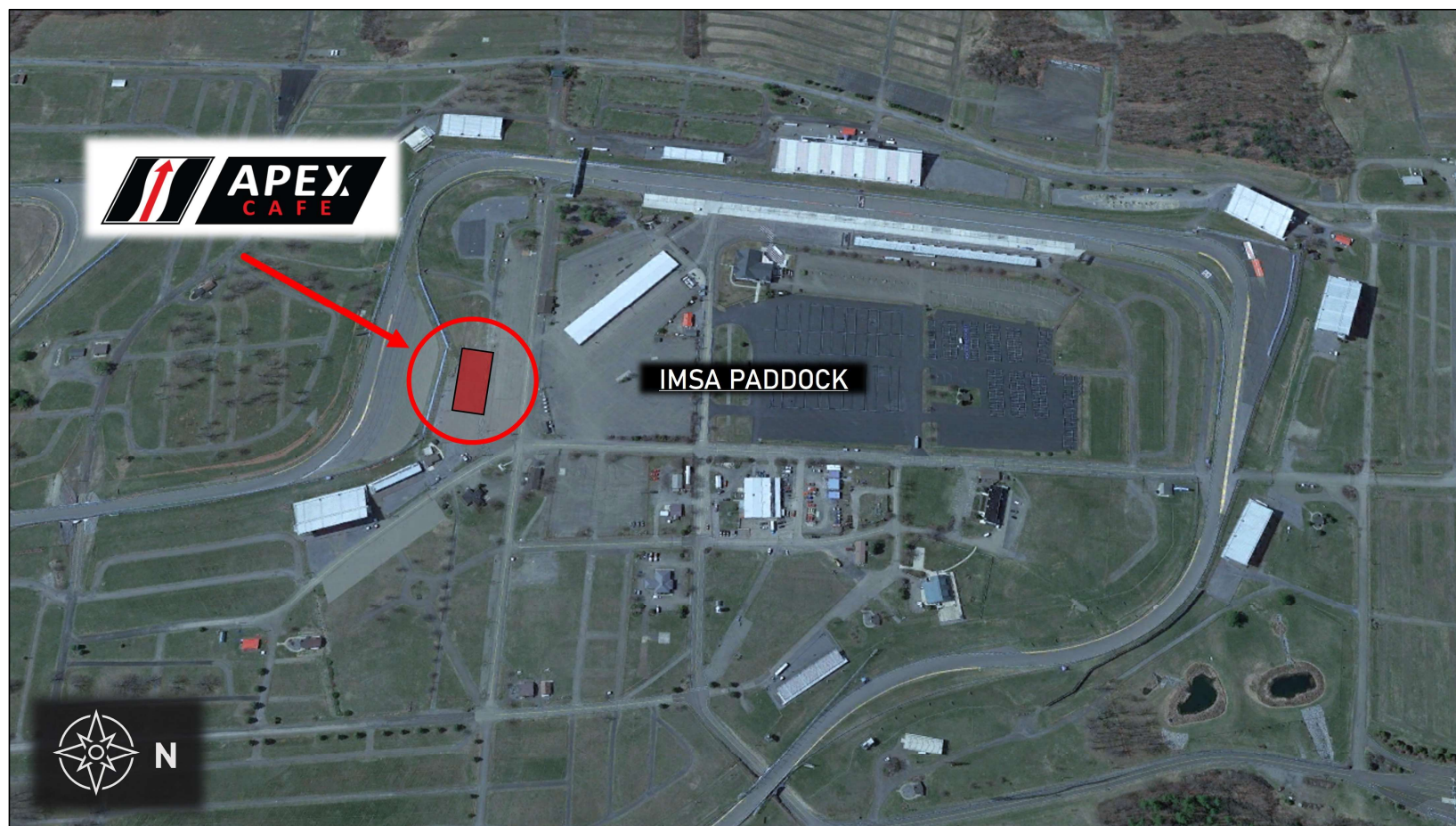


» APEX CAFÉ



Notes

- Tent located near Turn 10 and South Paddock
- Race team catering provided by Scheper Event Group
- Contact Kaitlin Scheper for more information (contact info located in Official SR "General Event / Track Info" section #5)

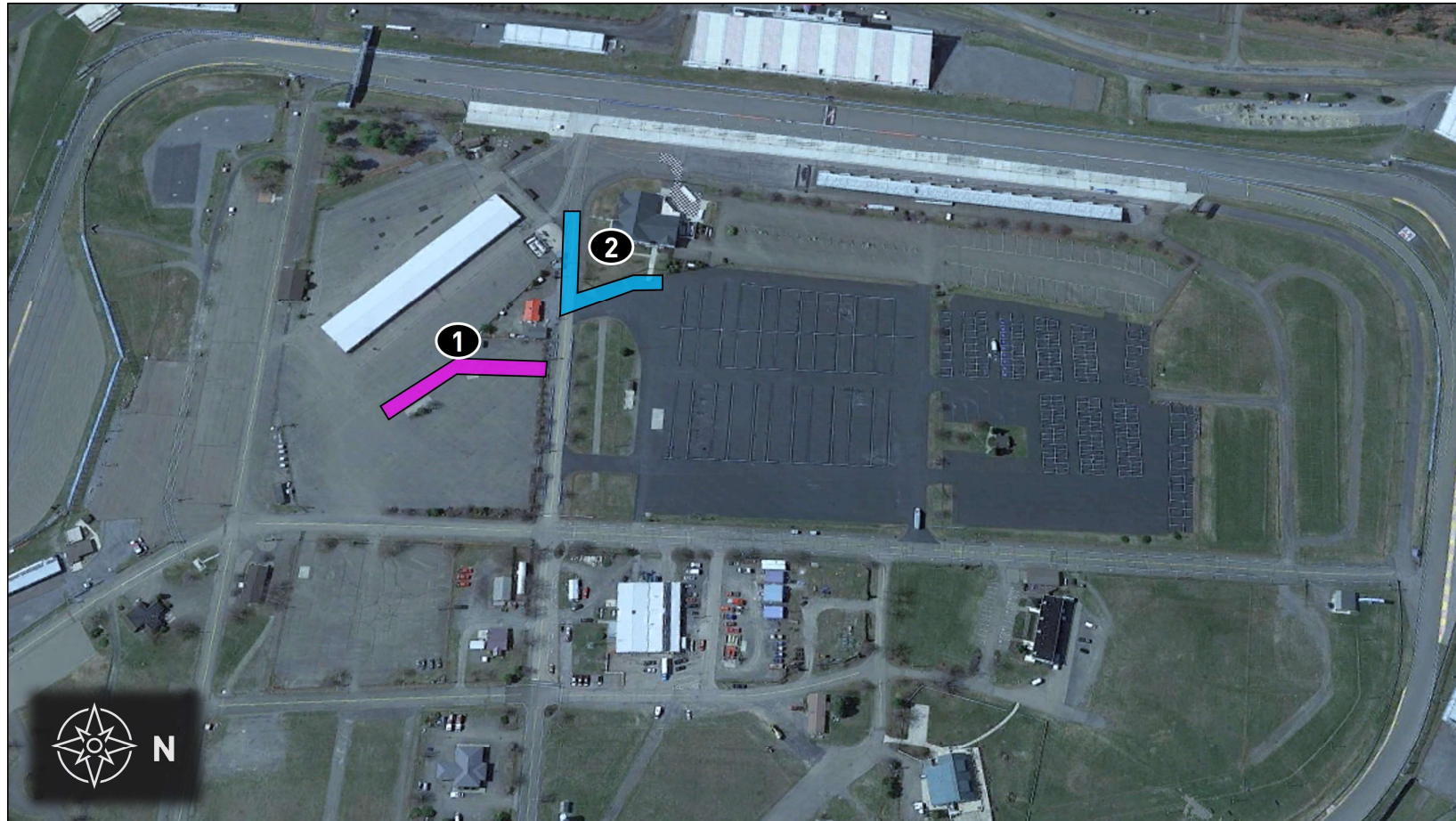


» FALSE GRID LOCATIONS



Locations

1. False Grid for Single-Make (PCCNA, LST) and IMSA Michelin Pilot Challenge
2. False Grid for IMSA WeatherTech SportsCar Championship

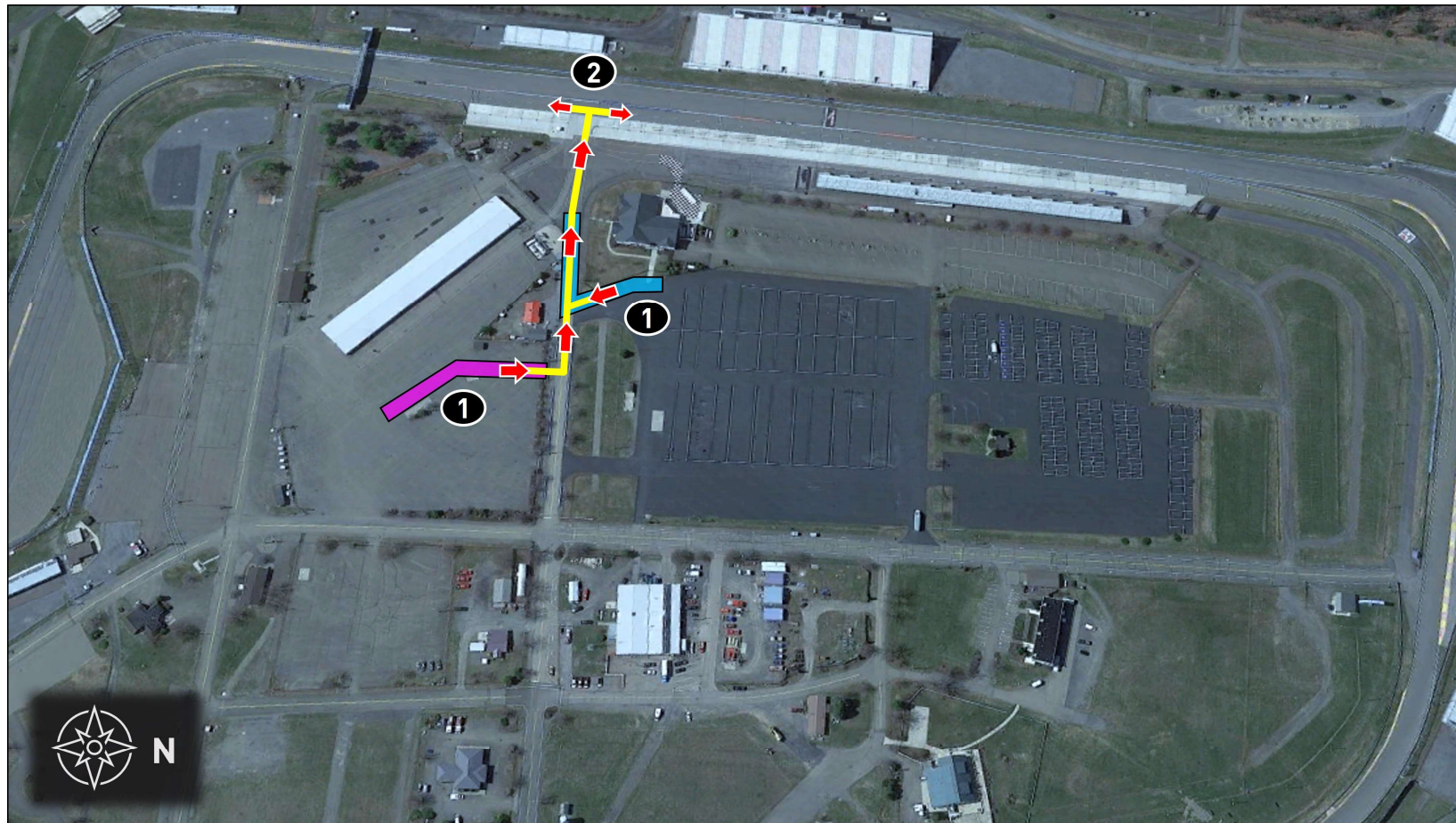


» TO PIT LANE



Directions

1. Exit respective False Grid and proceed to Pit Lane Access Road
2. Enter Pit Lane and proceed to assigned Pit Box. Traffic may proceed in either direction on Pit Lane

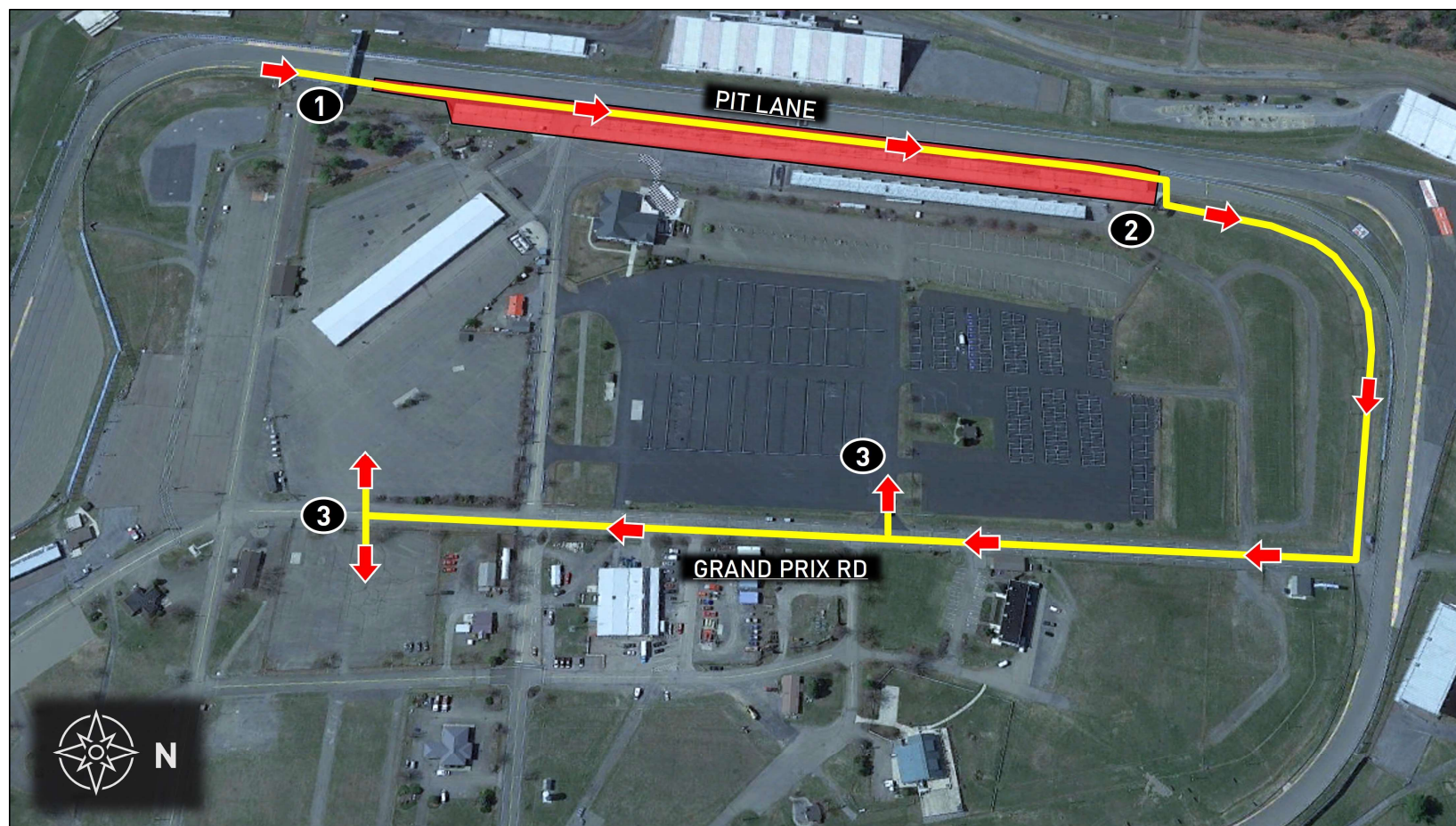


» PIT LANE TO PADDOCK



Directions

1. Exit track onto Pit Lane and proceed down Pit Lane
2. Proceed to Paddock Access Road, continuing to Grand Prix Rd
3. Enter Series Paddock





2025 EVENT MAPS

