

# LAMBORGHINI SUPER TROFEO

## WEATHERTECH RACEWAY LAGUNA SECA

TEAM MANAGER BRIEFING



SQUADRA CORSE

# SERIES CONTACTS



|                  |                           |                |
|------------------|---------------------------|----------------|
| Erik Skirmants   | Senior Motorsport Manager | (571) 240-8193 |
| Angelo Dinkov    | Series Support            | (571) 352-5570 |
| Craig Jamison    | Parts Support             | (248) 943-7343 |
| Andrew Bosscher  | Engineering Support       | (586) 709-8812 |
| Rachel Crawford  | Hospitality Coordinator   | (248) 935-9609 |
| Danny Van Dongen | Hankook Motorsports USA   | (305) 809-0356 |

|                 |                          |                |
|-----------------|--------------------------|----------------|
| Todd Snyder     | Race Director            | (860) 248-9115 |
| Duane Sampson   | Director, Single Make    | (386) 285-7021 |
| Austin Farr     | Coordinator, Single Make | (386) 293-1702 |
| Cory Posocco    | Logistics & Event Ops    | (386) 566-8313 |
| Holly Langer    | Paddock Layout           | (386) 871-0241 |
| Scott Ellison   | Technical                | (734) 621-9130 |
| Johnny Knotts   | Pit Lane Supervisor      | (813) 763-4669 |
| Carol Mueller   | Administration           | (386) 262-8932 |
| David Pees      | Timing & Scoring         | (386) 308-8866 |
| Ryan McLean     | Medical Liaison          | (386) 285-6913 |
| Roy Spielmann   | Track Services           | (414) 702-0905 |
| Robert Bosworth | Safety & Security        | (704) 728-8087 |

# IMSA RESOURCES

IMSA COMPETITOR LANDING PAGE:

<https://www.imsa.com/competitors/>

- Team Portal
- Event Information
- Rules & Regulations
- Marketing & Branding Page

IMSA NOTICE BOARD:

<http://results.imsa.com/>

- Driver & TM Briefings
- Entry Lists
- Minute by Minute
- Timing Results
- Penalties

## WELCOME TO THE 2025 IMSA COMPETITION LANDING PAGE

FOR ALL IMSA COMPETITOR INFORMATION PLEASE CLICK THE HAMBURGER MENU AT THE TOP LEFT OF THIS PAGE.

The one-stop shop for everything you'll need to get your team on track.

[2025 Team Portal](#)

[2025 Driver Portal](#)

[Media Center](#)

[Team and Driver Video & Photo Licensing](#)

[IMSA Marketing and Branding Resources](#)

[Race Results](#)

[Ferrari Challenge Race Results](#)

[Special Michelin Fleet Pricing for Commercial/Light Truck Tires and Service - For All IMSA Members](#)

[Special Michelin Discount Program for Passenger Tire - For All IMSA Members](#)

[IMSA Proud Suppliers](#)

## LATEST EVENT INFORMATION



### Mobil 1 Twelve Hours of Sebring

Mar 12, 2025 to Mar 15, 2025

Sebring, FL

Resources:

[Provisional Schedule & SR 12/8/25](#)

[Track Map](#)



# » TO IMSA REGISTRATION

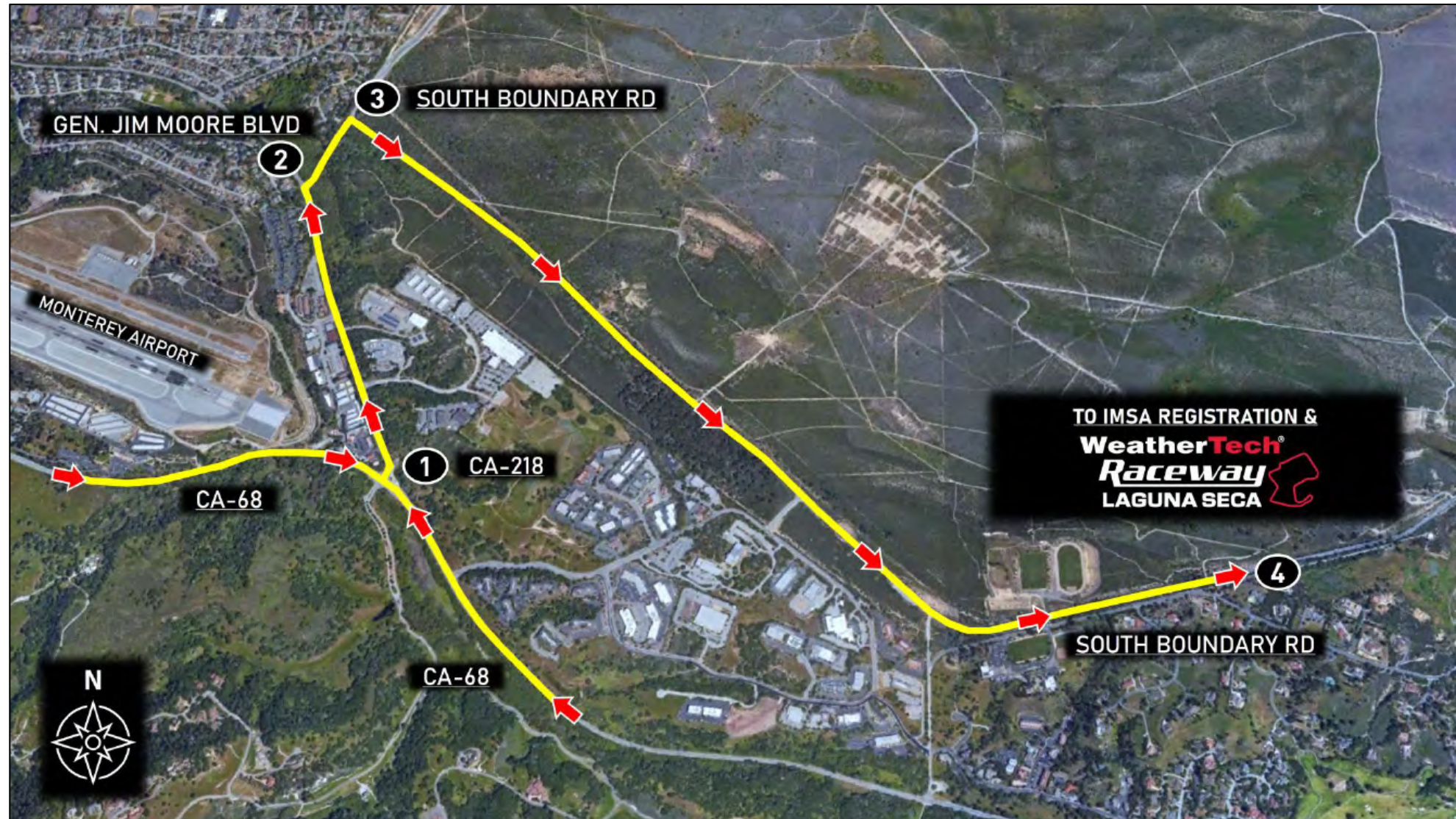


## Directions

1. Take CA-68 (Monterey Salinas Hwy) to CA-218 (Canyon Del Rey Blvd)
2. At light, turn right onto General Jim Moore Blvd
3. Take first right onto South Boundary Road (passing through swing gates)
4. Proceed on South Boundary Road to IMSA Registration & WeatherTech Raceway Laguna Seca

## Notes

- Refer to Official Schedule / SR for Registration hours of operation



# EVENT INFORMATION

---

## PARKING

- IMSA Annual Hangtags use the hillside (Blue Lot 2), Driver's right prior to entering the Paddock
- Free GA parking available in the Purple Parking Lot with shuttles into track

## PADDOCK PARKING (SUNDAY)

- On Sunday, May 11, there is limited first-come, first-serve parking in the former IMPC Paddock area with IMSA Annual Hangtag
- For Gate and Traffic info, refer to the WRLS Team Information Packet [Here](#)

*ADA Parking in the Paddock requires an additional track issued parking pass – limited availability.*



# » TO IMSA HANGTAG PARKING (S BOUNDARY RD ENTRANCE)



## Directions

1. Take South Boundary Rd past Admissions Checkpoint
2. Turn right on S Perimeter Rd and proceed towards parking area
3. Park in designated IMSA Team Parking location, Blue Lot 2 (blue shaded area)

## Notes

- S Boundary Rd Entrance available at 6:00 AM daily
- IMSA annual parking passes valid at this event (hangtags)





# » TO IMSA HANGTAG PARKING (CA-68 ENTRANCE)



## Directions

1. Take CA-68 (Monterey Salinas Hwy) to Track Entrance
2. Proceed uphill on A Rd to S Perimeter Rd intersection
3. Turn right on S Perimeter Rd, towards parking area
4. Park in designated IMSA Team Parking location, Blue Lot 2 (blue shaded area)

## Notes

- CA-68 Entrance open at 6:00 AM from Thur, May 8 - Sun, May 11
- IMSA annual parking passes valid at this event (hangtags)



# EVENT INFORMATION

---

## GOLF CARTS

- **LST** Teams are permitted **one (1)** support vehicles (golf carts) in the Paddock area per entered Car
- Teams must return a previously issued 2025 Annual pass to obtain a replacement
- Access stickers available from the Administrator in the WeatherTech Tech Trailer

## PIT VEHICLES

- **LST** Teams are permitted **one (1)** support vehicle (tugger) in the pit lane per entered Car
- Access stickers available from the Administrator in the WeatherTech Tech Trailer



# EVENT INFORMATION

---

## WEATHERTECH RACEWAY LAGUNA SECA SUPPORT VEHICLE REQUIREMENTS

- Pit vehicles must be operated by a licensed driver at least 18 years or more of age
- BOTH rental and privately owned carts must submit a liability insurance certificate for \$1,000,000 in coverage to operate at the facility
- Privately owned carts must be registered and an Event sticker is required (\$50.00)
- The golf cart insurance certificate and extra information can be found on the Team Packet [Here](#)

## POINT OF CONTACT

- Madison Hutchison
- [hutchisonm@laguna-seca.com](mailto:hutchisonm@laguna-seca.com)
- 831-242-8212



# Paddock

**PROHIBITED:  
ANY ONE, TWO OR  
THREE-WHEEL FORM OF  
TRANSPORTATION**

**ONLY PROPERLY  
PERMITTED VEHICLES ACCEPTED**

**EXCEPTIONS FOR VESTED MEDIA  
AND ADA TRANSPORT**

Motorcycles, drones, bicycles, skateboards, rollerblades and other non-motorized transportation, as well as motor scooters of one, two or three-wheels and/or designed to transport one or two persons, are prohibited in the garage, pit and/or Paddock areas except authorized power-driven mobility devices (ADA requirements - Americans with Disabilities Act), and accredited and vested media personnel.

Pit vehicles must only be operated by an IMSA credential holder. Motorized carts and similar 3- or 4-wheeled conveyances must not be driven into pit lane except pit equipment approved for a Series or as specified in the SR.

Such use in the Paddock must be for legitimate purposes only.

Excessive speed and/or unsafe operation is prohibited. Participants must abide by state laws and Promoter restrictions regarding licensing, maximum speed, helmet requirement and use.

Such conveyances may be prohibited at certain Events or in certain areas of each facility by local ordinance or Promoter limitation.



# IMSA SEVERE WEATHER PLAN

---

- IMSA uses the DTN Weather Service with Lightning Detection.
- Notifications are sent (as in past years). All messages will start with "IMSA MESSAGE":
  - Within 30 miles of the track – Advisory message sent for informational purposes.
  - Within 20 miles of the track – Cautionary message sent to increase awareness and trigger protective actions for personnel and equipment.
  - Within 8 miles of the track – Full-Stop message sent for personnel to stop all activities and seek shelter due to potentially dangerous conditions.
    - IMSA continues to send periodic updates through the messaging service while on-track activities are under a “full-stop”.
  - When severe weather has moved out of the area, an “all-clear” message is transmitted.

**IMSA uses an internal messaging service. Text messages are sent to all credentialed attendees for an Event. There is no need to provide a recipient list.**

# » TO PIT LANE



## Directions

1. Enter False Grid
2. Enter Pit Lane
3. Proceed onto racecourse





# » TO PADDOCK | HOT TRACK

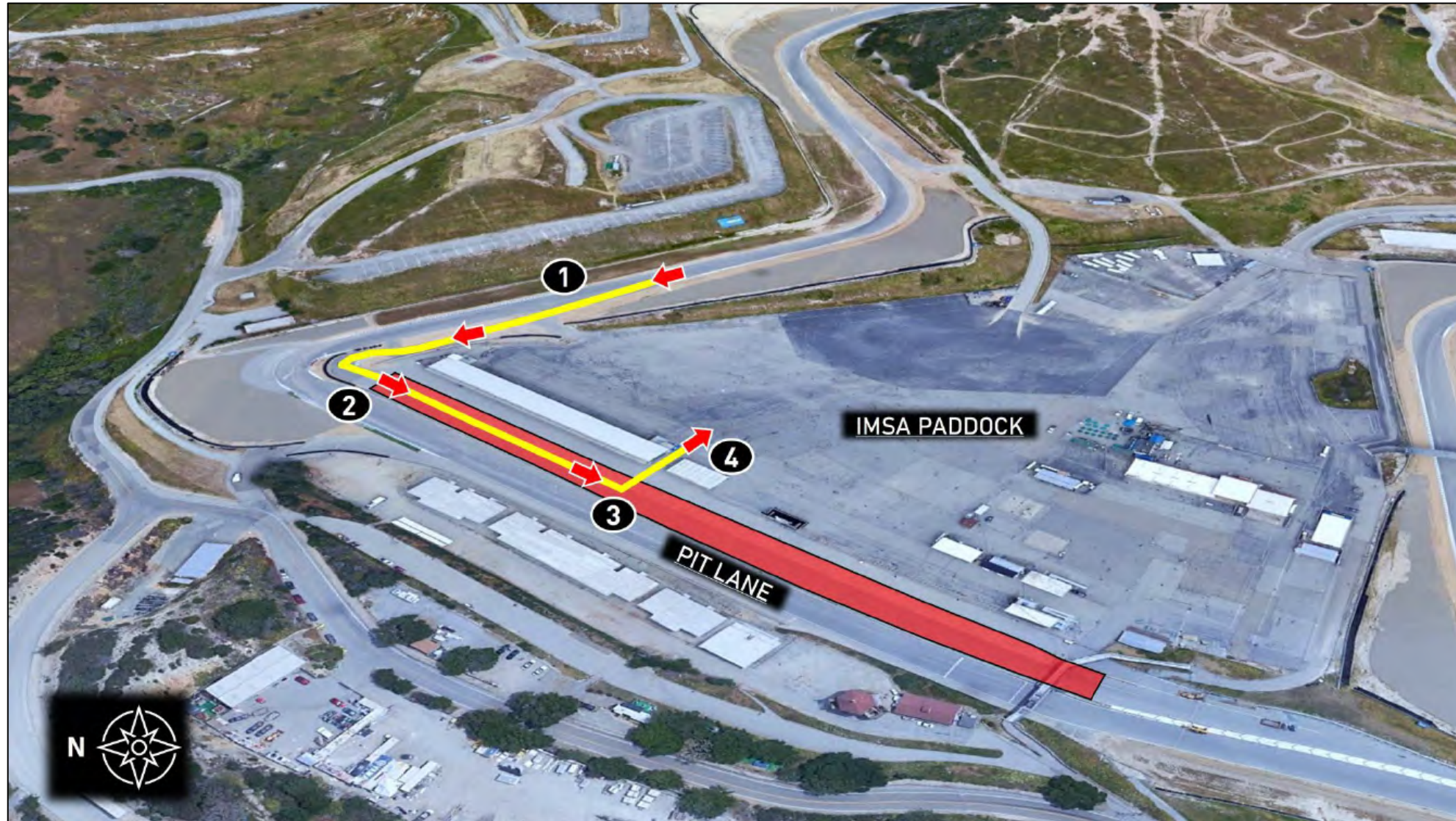


## Directions

1. Exit racecourse onto Pit Lane
2. Continue down Pit Lane
3. Exit Pit Lane on drivers' left, past pit row suites
4. Proceed to assigned team paddock space / set-up

## Notes

- All cars must be pushed through the garage gate before entering the paddock



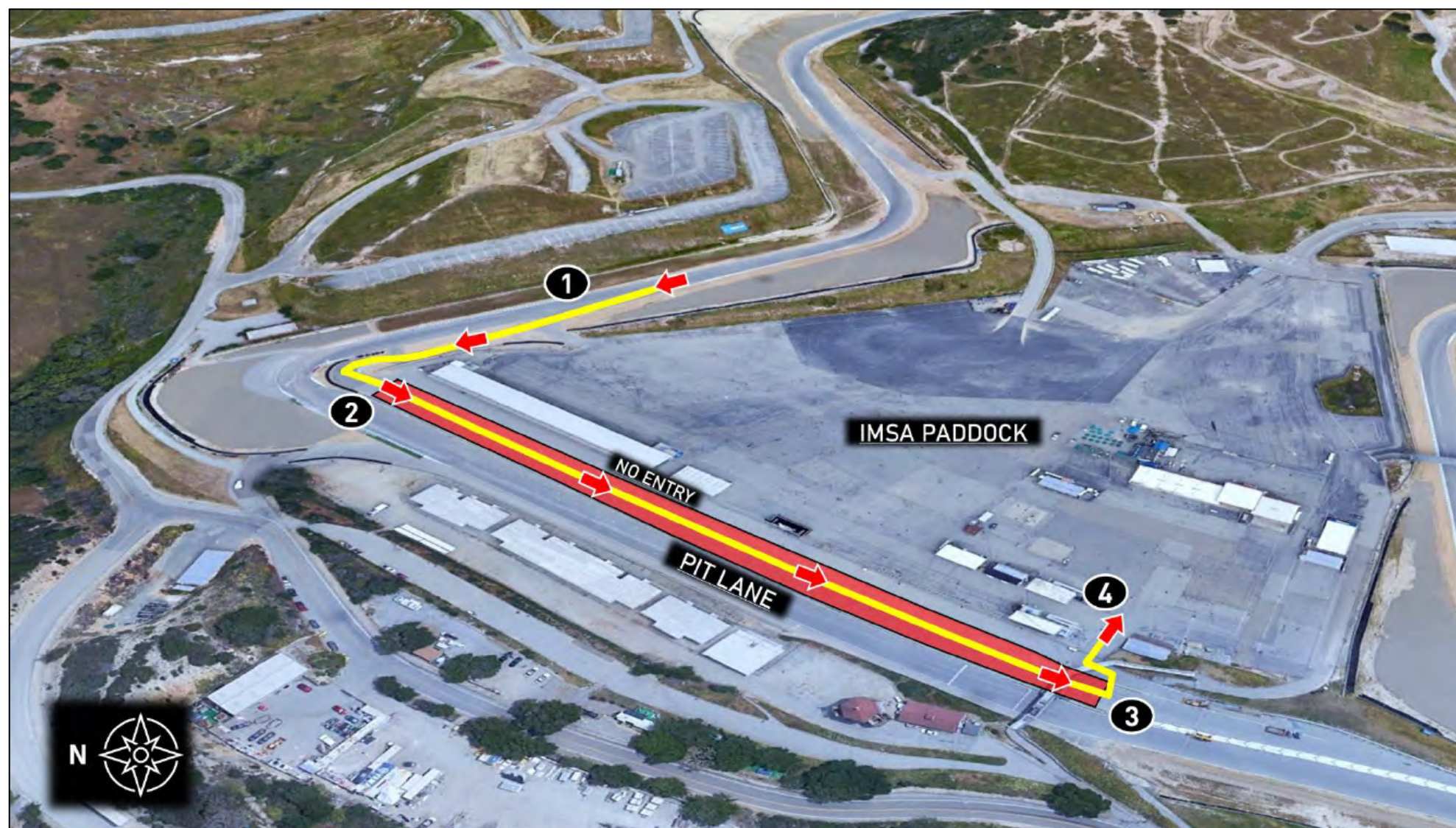


## Directions

1. Exit racecourse onto Pit Lane
2. Continue down Pit Lane
3. Exit Pit Lane on drivers' left, past foot bridge. Sharp left turn to enter paddock area
4. Proceed to assigned team paddock space / set-up

## Notes

- There will be no paddock access at entrance nearest Pit Lane structure





# » TRACK MEETING ROOM



## Notes

- Track Meeting Room is in the Newman Building, located within the IMSA Paddock
- Two building bays closest to track will be utilized for meetings (see inset photo)
- Proper credentials required for paddock entry





# » CARE CENTER LOCATION



## Notes

- Care Center is located outside Turn 11 (blue shaded area)
- Refer to Official Schedule / SR for Care Center hours of operation





# » DISABLED CAR ROUTE



## Directions

1. Coast to Turn 10 back-door paddock entrance and exit track
2. Enter paddock via manned gate and proceed to designated paddock area

## Notes

- Route is intended for disabled cars or cars released by Track Services at Turn 8



# IMSA TRACK SERVICES

## IMSA CHASE VEHICLES

- Chase 1
- Chase 2
- Chase 3
- Chase 4

## ON-TRACK ASSISTANCE

- Communication with Track Services Medic
- Neutral and power shut off
- Follow direction of on-scene Track Services personnel
- Maintain a safe speed and distance when passing on-track incidents with Track Services team members on the scene

Contact: Roy Spielmann 414.702.0905





# SERIES REQUIRED ELECTRONICS

## MANDATORY TRANSPONDER and DRIVER ID EQUIPMENT

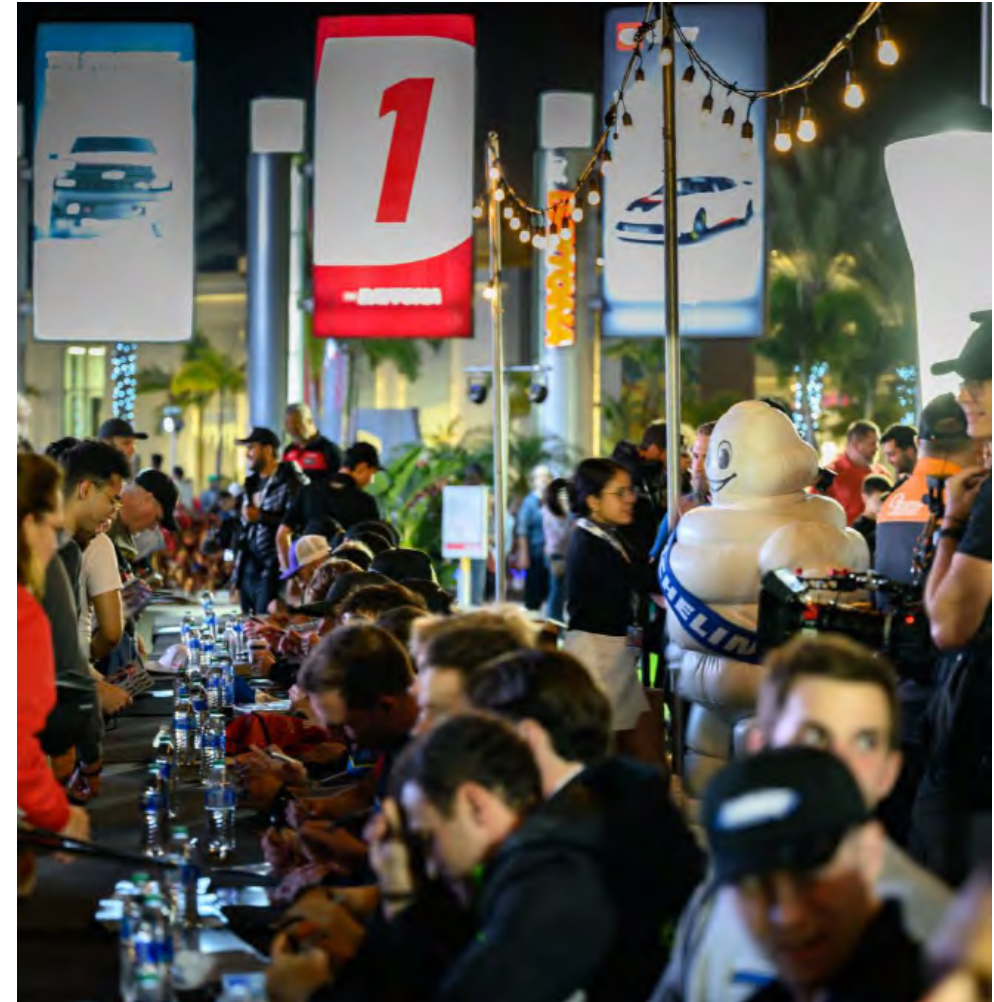
- **LST Technical Regulation 12.1:** Transponder TR2 and X2 Driver ID Unit
  - Each car **must be** equipped with the approved timing transponder sold by Official Lamborghini Super Trofeo Spare Parts
  - (4TA919052A + 4TA919052B).
    - A. Kit contains the following components:
      - 1. Transponder TR2
      - 2. X2 Driver ID Unit
      - 3. Power connection cables
      - 4. Transponder Mounting Bracket
- **ANY ENTRANT WITH INCORRECT OR NON-FUNCTIONAL EQUIPMENT WILL BE HELD FROM PARTICIPATION IN ON-TRACK ACTIVITY**

# UPCOMING PROMOTIONAL / FAN OPPORTUNITIES

**WATKINS GLEN INTERNATIONAL**  
WEDNESDAY, JUNE 18  
IMSA PREVIEW PARTY AT THE YARD

**INDIANAPOLIS MOTOR SPEEDWAY**  
THURSDAY, SEPTEMBER 18  
INDIANAPOLIS STREET FESTIVAL

Interested in participating? Contact [Emily Nash](#) for more details.



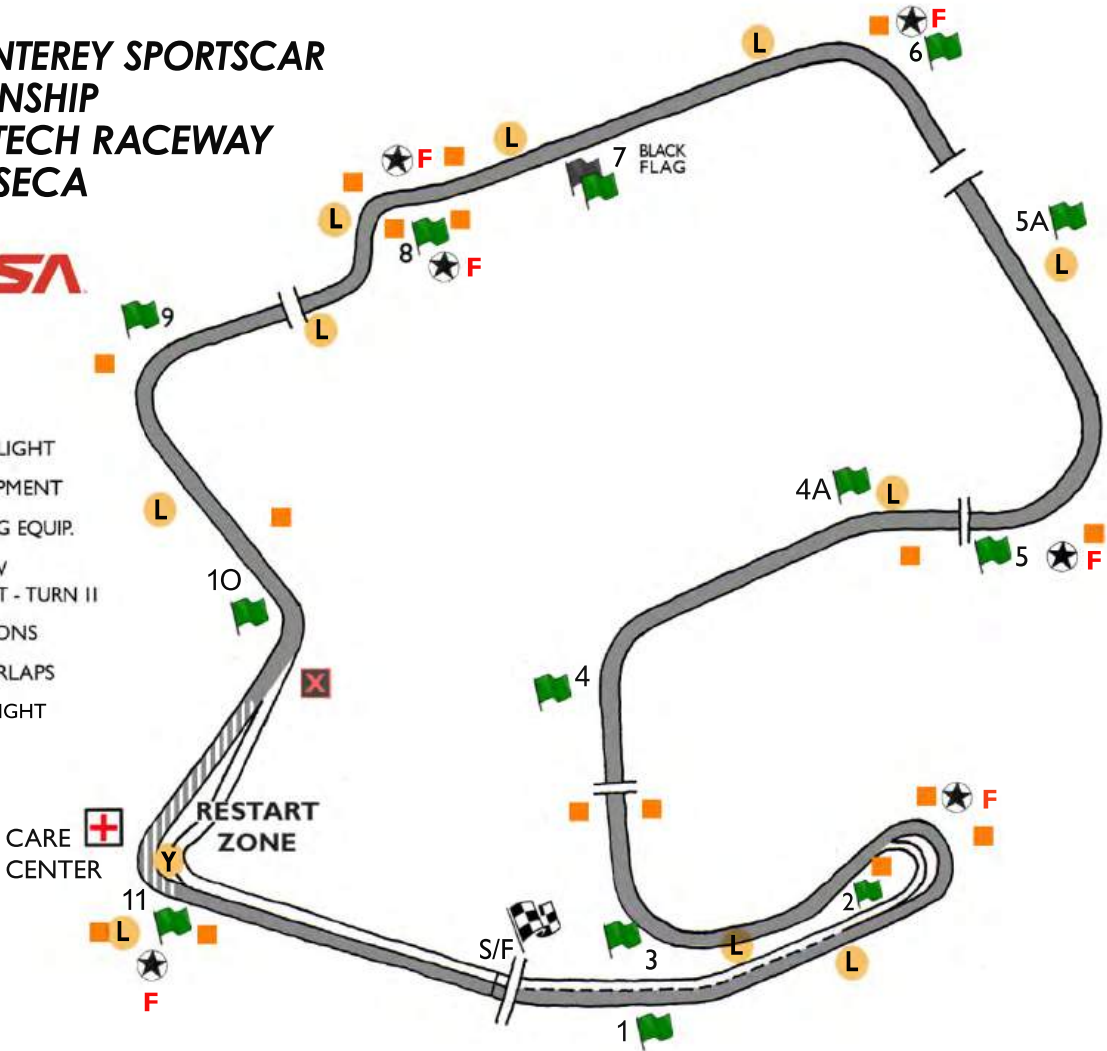


# OFFICIAL TRACK MAP

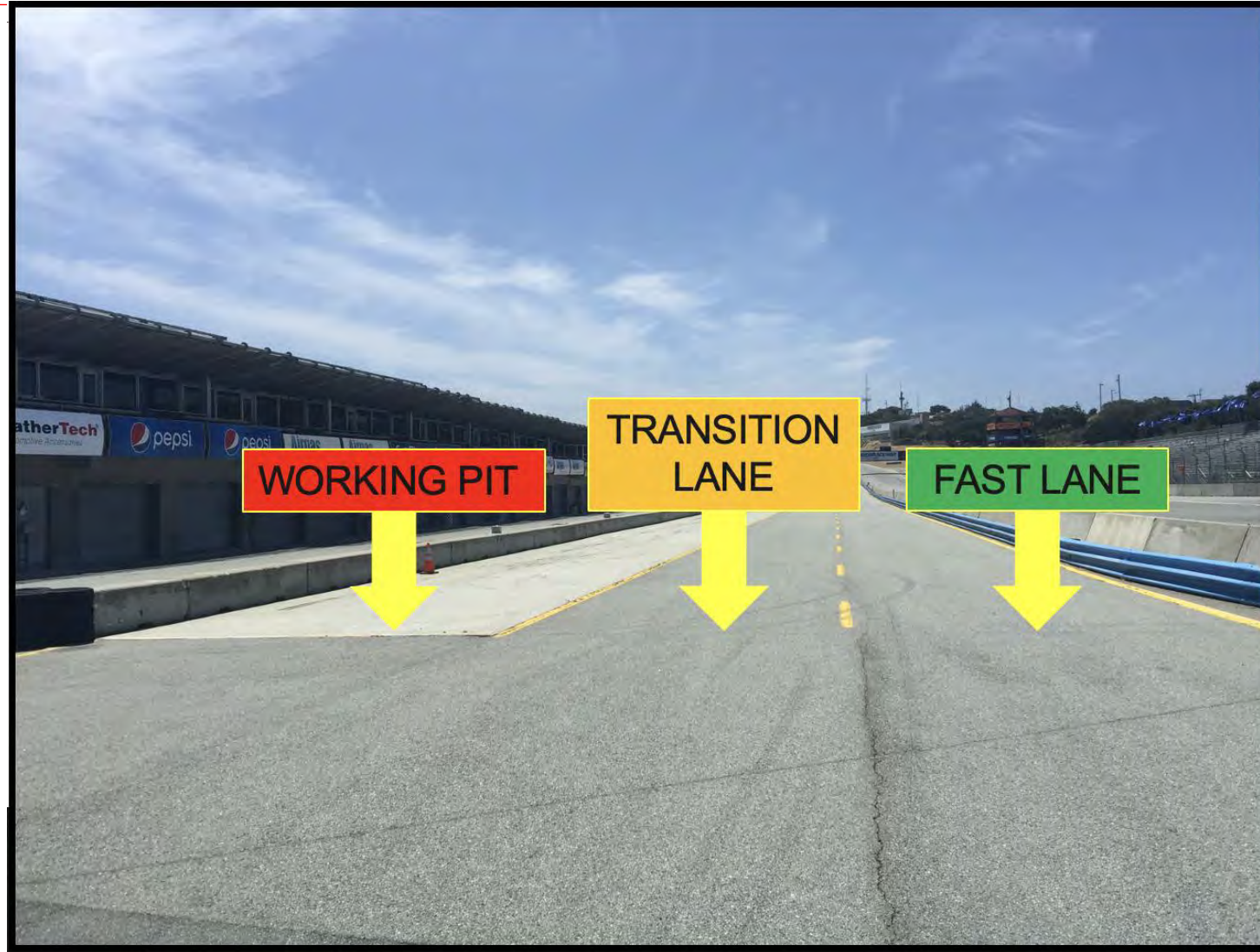
2025 MONTEREY SPORTSCAR  
CHAMPIONSHIP  
WEATHERTECH RACEWAY  
LAGUNA SECA



- L IMSA DELPHI LIGHT
- ★ SAFETY EQUIPMENT
- F FIRE FIGHTING EQUIP.
- Y- LOCAL YELLOW CAUTION LIGHT - TURN 11
- FLAG LOCATIONS
- ORANGE OVERLAPS
- PITS CLOSED LIGHT



# PIT LANE PROTOCOL





# PIT EXIT / PENALTY BOX / PIT CLOSED LIGHT



# PIT EXIT MERGE

- CARS EXITING THE PIT LANE MUST REMAIN FOUR WHEELS TO THE LEFT OF THE MERGE LINE UNTIL IT ENDS IN TURN 2
- CARS ON TRACK MUST RESPECT THE SPEED DIFFERENCE OF THOSE IN THE PIT EXIT MERGE LANE
- TRACK LIMITS WILL BE ENFORCED





# PIT EXIT MERGE

- CARS EXITING THE PIT LANE MUST REMAIN LEFT UNTIL TURN 3
- MERGE SAFELY WITH FASTER CARS ON TRACK
- RESPECT THE SPEED DIFFERENCE OF THOSE ALREADY ON TRACK



# ORANGE OVERLAPS





# PIT COMMIT / PIT LANE SPEED START

- MUST HAVE PART OF CAR TOUCHING, OR BE TO THE LEFT OF THE DASHED WHITE LINE THAT DIVIDES THE RACETRACK FROM PIT ENTRY PRIOR TO THE PIT CLOSED LIGHT ILLUMINATING IN ORDER TO BE CONSIDERED COMMITTED TO THE PITS
- PIT LANE SPEED LIMIT BEGINS AT RED PYLONS



# TRACK LIMITS – TURN 5





# TRACK LIMITS – TURN 9



# SHORT CUT – TURN 10





# RED FLAG / LINING UP...

---

## PRACTICE

- Upon release from false grid, Cars are permitted to line up at pit exit
- During red flags, Cars are permitted to line up at pit exit

## QUALIFYING

- Upon release from false grid, Cars are NOT permitted to line up at pit exit and must go to their Pit Box and wait for the command from RC to release.
- During red flags, Cars are NOT permitted to line up at pit exit and must go to their Pit Box and wait for the command from RC to release.

# QUALIFYING

---

- CARS THAT LINE UP AT THE PIT EXIT DURING QUALIFYING ARE HELD UNTIL ALL OTHER CARS ARE PROPERLY IN THEIR PIT BOX HAVE HAD AN OPPORTUNITY TO JOIN THE SESSION AND ARE THEN RELEASED.
- CARS THAT LINE UP AT THE PIT EXIT DURING QUALIFYING AND THAT ENTER THE TRACK prior to release ARE PENALIZED AS BELOW.
- CARS PENALIZED ON TRACK FOR LINING UP OR LEAVING THEIR PIT BOX EARLY MUST SERVE THE PENALTY PRIOR TO REGISTERING ANY LAP TIMES FOR THE PURPOSES OF QUALIFYING POSITION.
- Short sessions, watch mirrors frequently on your in and out laps to not impede the qualifying of another competitor.



# PIT STOP

---

MINIMUM TIME PIT IN LOOP TO PIT OUT LOOP

- TWO DRIVERS = 84 SECONDS
- SOLO DRIVER = 87 SECONDS

PIT DISTANCE IS 15,474 INCHES

DRIVER MUST CHANGE DRIVER ID PLUG BEFORE LEAVING PIT EXIT OR IT WILL NOT REGISTER. INCORRECT DRIVER ID MAY RESULT IN A DRIVE THROUGH TO RECTIFY

DRIVING SLOWER THAN 60kph IN THE FAST LANE MAY BE PENALIZED

TRANSITION LANE SHOULD BE USED IF LESS THAN 60kph TO NOT INTERFERE WITH CARS IN THE FAST LANE

**Thank you!**

**Race Briefing Saturday at  
9:45am**



SQUADRA CORSE



# LAMBORGHINI SUPER TROFEO

## WEATHERTECH RACEWAY LAGUNA SECA

RACE BRIEFING



SQUADRA CORSE

# PRE-RACE PROCEDURES

---

REFER TO THE MxM



# START

---

- Two (2) formation laps – Clock will start at the end of the first formation lap
- Pack up from T6 to T8, pair up T8 to T10 2<sup>nd</sup> time by
- Stay with Safety Car until it enters the pits
- Steady speed until green flag displayed
- Must maintain column positions and lanes until crossing the start line
- Pole-Sitter please remain after meeting
- No changing of column until past S/F line
- Jump/false start reviews
  - Gaps
  - Timed/early acceleration
  - Out of line
  - Column passing
- Official race start is first time by

# R1 START WRLS 2024





# R2 START WRLS 2024



# PASS UNDER FCY





# BLOCKING



# ORANGE OVERLAPS





# PIT COMMIT / PIT LANE SPEED START

- MUST HAVE PART OF CAR TOUCHING, OR BE TO THE LEFT OF THE DASHED WHITE LINE THAT DIVIDES THE RACETRACK FROM PIT ENTRY PRIOR TO THE PIT CLOSED LIGHT ILLUMINATING IN ORDER TO BE CONSIDERED COMMITTED TO THE PITS
- PIT LANE SPEED LIMIT BEGINS AT RED PYLONS



# FULL COURSE YELLOW

Race Control radio, in-car lights, trackside lights, double yellow flags displayed

- Pits are closed under FCY except for emergency services

Safety VEHICLES may begin to move as soon as FCY is ANNOUNCED

Leader to Safety Car speed, all Cars pack up – respect the area of incident/track services personnel

- Safety Car dispatches from pit exit
- RC instructions regarding track condition over radio

Lights out by turn 9

- Maintain SC speed, let SC get away, *no more tire scrubbing*

Restart Acceleration zone – Turn 11

- Passing can occur at the display of green flag
- Expect restarts to be faster than original start

Article 26.8 - It is prohibited to carry out zigzag maneuvers to warm up tires during the practices and qualifying. Any infringement by a driver or entrant during the practice sessions will be penalized by the Stewards according to their own criteria. THIS APPLIES TO RESTARTS AS WELL



# PIT STOP

---

## MINIMUM TIME PIT IN LOOP TO PIT OUT LOOP

- TWO DRIVERS = 84 SECONDS
- SOLO DRIVER = 87 SECONDS

## PIT DISTANCE IS 15,474 INCHES

- ENGINE MUST BE TURNED OFF, CHOCKS AND EXTERNAL BATTERY ALLOWED
- DRIVER MUST CHANGE DRIVER ID PLUG BEFORE LEAVING PIT EXIT OR IT WILL NOT REGISTER. INCORRECT DRIVER ID MAY RESULT IN A DRIVE THROUGH TO RECTIFY
- DRIVING SLOWER THAN 55kph IN THE FAST LANE MAY BE PENALIZED
- TRANSITION LANE SHOULD BE USED IF LESS THAN 60kph TO NOT INTERFERE WITH CARS IN THE FAST LANE

# MANDATORY PIT STOP

1. No respect of the time between the two pit lane timing loops under the published time (Art. 41). If the driver stays in the pitlane for a time that is less than (or equal to) 1 "seconds respect to the minimum time imposed, the driver will receive a time penalty equal to three times time period not respected. If the driver stays in the pitlane for a time that is more than 1 "seconds less than the minimum time imposed, the driver will receive a penalty equal to Drive Through.
2. All stopping or driving at an abnormally slow speed, lower than 55 kph after the pit stop carried out at the designated Pit/Area: Drive-Through;
3. All speeding over the limit of 60 kph in the pit lane: Drive-Through;
4. Start of the obligatory pit stop outside the obligatory times (Art. 41): Drive- Through penalty.

However, should any of the penalties under 1) to 4) above be imposed and notified during the last 5 minutes or the 3 last laps, or after the end of the race, a 30-second time penalty shall be added to the elapsed time of the car concerned in cases 2) and 3) and a time penalty of 30 seconds plus the original Stop & Go Penalty in cases 1) and 4).

- Pit Entry is closed under FCY during the Pit Stop Window
- No Mandatory Pit Stop = Stop and Go plus the original minimum pit time
- Crew on the hot side of Pit Lane, Engine off during Pit Stop!



# ON TRACK

---

- **LOCAL YELLOWS**
  - No passing
  - Slow to a safe speed
- **BLOCKING / DEFENDING INCREASES RESPONSIBILITY**
  - Proactive vs. Reactive
  - Race how you would like to be raced
- **COEXISTENCE – MULTI CLASS RACING**
  - Awareness
  - Coexist
  - Blue Flags / Car being passed be consistent!

# ADDITIONAL PENALTIES

---

- **Race Control may impose larger than D.T. penalties for Incident Responsibility**
  - Stop and Go
  - Stop and Hold
- **10 Second Penalty**
  - The Race Director may apply a 10 second time penalty
  - Potential applications:
    - Jump start
    - PUY after the incident but before green flag
    - Incident responsibility that resulted in no change of position
  - 10 second penalties are applied as the penalized Car crosses Start/Finish at the Checker
  - The 10 second penalty is intended to increase the range of penalty options in sprint races



# RACE ENDS UNDER FCY

---

ART. 37.1.8. Should the Race end under Full Course Yellow (FCY) conditions, Cars must maintain the Safety Car speed until crossing the Finish Line at the checkered flag. Cars must remain in single file and maintain a consistent gap of approximately two (2) Car lengths to the Car in front of them. Any gamesmanship or manipulation of the pace or procedure is prohibited and may be penalized.

# POST RACE

---

- REFER TO MxM
- ALL CARS TO PIT LANE AFTER CHECKER
  - IMSA PERSONNEL TO ASSIST IN SPLITTING PODIUM CARS IN PIT LANE
  - IMSA PERSONNEL TO ASSIST IN SPLITTING TECH CARS IN PIT LANE
  - CREW FOR PODIUM CARS MUST BE READY TO MOVE CARS OFF PIT LANE



# WET WEATHER PROTOCOLS

---

- RACE STARTS DRY AND GOES WET
  - WE WILL GO FCY AND BRING THE ENTIRE FIELD IN TO CHANGE TO WETS
- IF SESSION / RACE IS DECLARED WET ALL CARS START ON WET TIRES
  - TEAM CHOICE IF OR WHEN TO GO TO DRY TIRES
  - CAN NOT CHANGE TIRES DURING THE MANDATORY PIT STOP WINDOW

# WET TIRE CHANGE PROCESS

If Race is not started as declared 'Wet', the following process is used:

- Race Control announces FCY and deploys Safety Car to collect the field.
- The running order of the Cars is taken at S/F for all Cars.
- After all Cars have crossed S/F but before arriving at the pit entry, Race Control declares Red Flag.
- The Race Director declares the Race 'Wet'.
- The Safety Car leads the field into the pit lane.
- Cars are directed to their pit boxes for the exclusive purpose of changing to wet tires, no other work.
- Teams are given Five (5) minutes to change tires.
- Cars unable to continue must inform their Pit Official.
- The Pit Officials will call the order of the Cars as taken at S/F to release from their pit box one at a time and proceed on track behind the Safety Car.
- Changes to the running order in case of any misfortune after crossing S/F are restored for the restart.
- A 'confirmation lap' is performed to check the order of the Cars and to direct any necessary changes.
- The Race is resumed from FCY as normal.

**Thank you**

**Best of Luck to All!**



SQUADRA CORSE