



TEAM MANAGER BRIEFING



# WEATHERTECH RACEWAY LAGUNA SECA 120

SATURDAY, MAY 10 AT 3:40PM ET

peacock  YouTube

# SERIES CONTACTS

---

Beaux Barfield	Race Director	(832) 260-1032
Brian Wilson	Series Manager	(386) 281-9494
Gayle Burnham	Member Services	(386) 235-7800
Cory Posocco	Logistics & Event Ops	(386) 566-8313
David Pees	Timing & Scoring	(386) 308-8866
Eric Haverson	Technical	(386) 562-7214
Holly Langer	Paddock Layout	(386) 871-0241
Johnny Knotts	Pit Lane Supervisor	(813) 763-4669
Marisa Ross	Series Coordinator	(386) 293-1474
Paul Walter	Sporting Regulations	(614) 598-6783
Robert Bosworth	Security & HV Safety	(704) 728-8087
Roy Spielmann	Track Services	(414) 702-0905
Ryan McLean	Medical Liaison	(386) 285-6913

[2025 IMSA Operational Contact List](#)



# IMSA RESOURCES

## IMSA COMPETITOR LANDING PAGE:

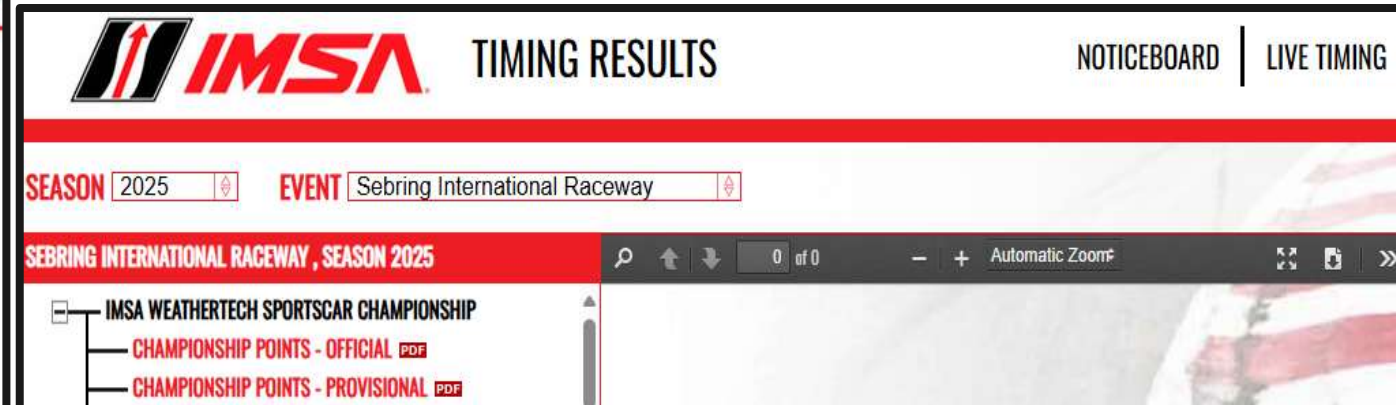
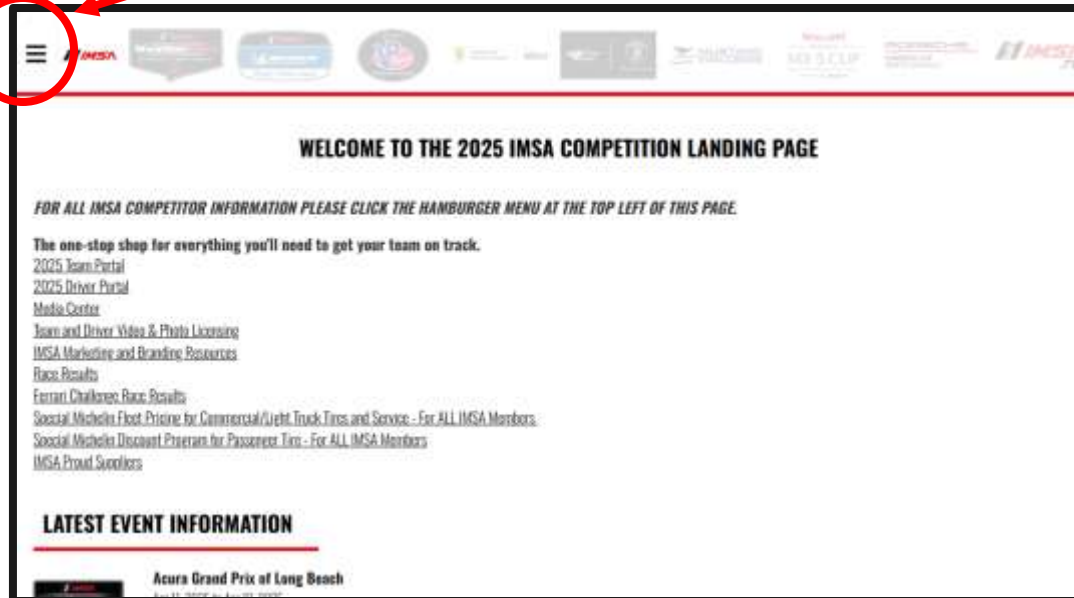
<https://www.imsa.com/competitors/>

- Team Portal
- Event Information
- Rules & Regulations
- Marketing & Branding Page
- All Event Schedules published

## IMSA NOTICE BOARD:

<http://results.imsa.com/>

- Driver & TM Briefings
- Entry Lists
- Minute by Minute
- Timing Results
- Penalties

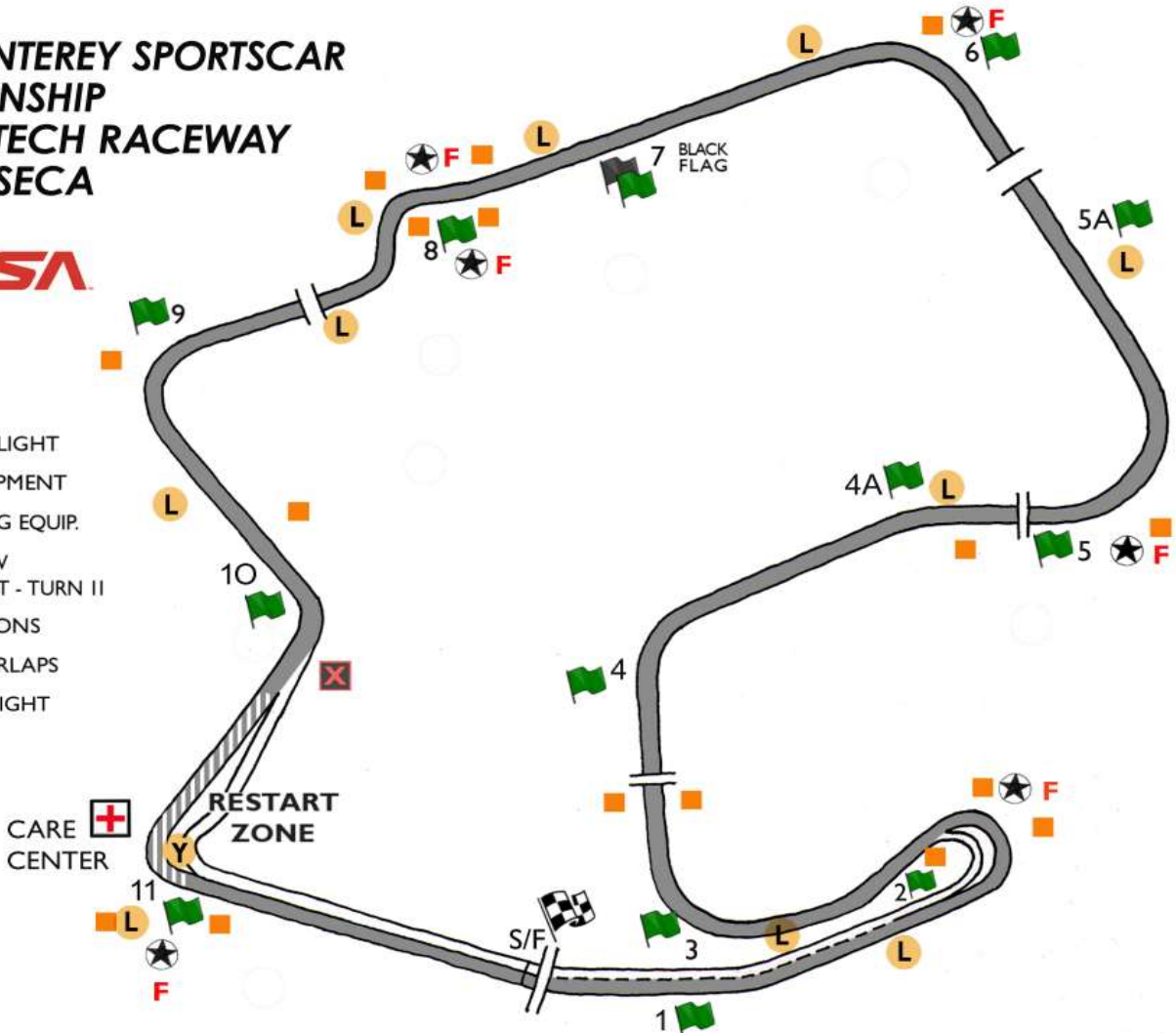


# OFFICIAL TRACK MAP

2025 MONTEREY SPORTSCAR  
CHAMPIONSHIP  
WEATHERTECH RACEWAY  
LAGUNA SECA



- IMSA DELPHI LIGHT
- SAFETY EQUIPMENT
- FIRE FIGHTING EQUIP.
- LOCAL YELLOW CAUTION LIGHT - TURN II
- FLAG LOCATIONS
- ORANGE OVERLAPS
- PITS CLOSED LIGHT



# IMSA TRACK SERVICES

## IMSA CHASE VEHICLES

- Chase 1
- Chase 2
- Chase 3
- Chase 4

## ON-TRACK ASSISTANCE

- Communication with Track Services Medic
- Neutral and power shut off
- Follow direction of on-scene Track Services personnel
- Maintain a safe speed and distance when passing on-track incidents with Track Services team members present



Contact: Roy Spielmann 414.702.0905



# » DISABLED CAR ROUTE



## Directions

1. Coast to Turn 10 back-door paddock entrance and exit track
2. Enter paddock via manned gate and proceed to designated paddock area

## Notes

- Route is intended for disabled cars or cars released by Track Services at Turn 8
- Cars will not be towed down corkscrew





## Directions

1. Enter False Grid
2. Enter Pit Lane
3. Proceed onto racecourse



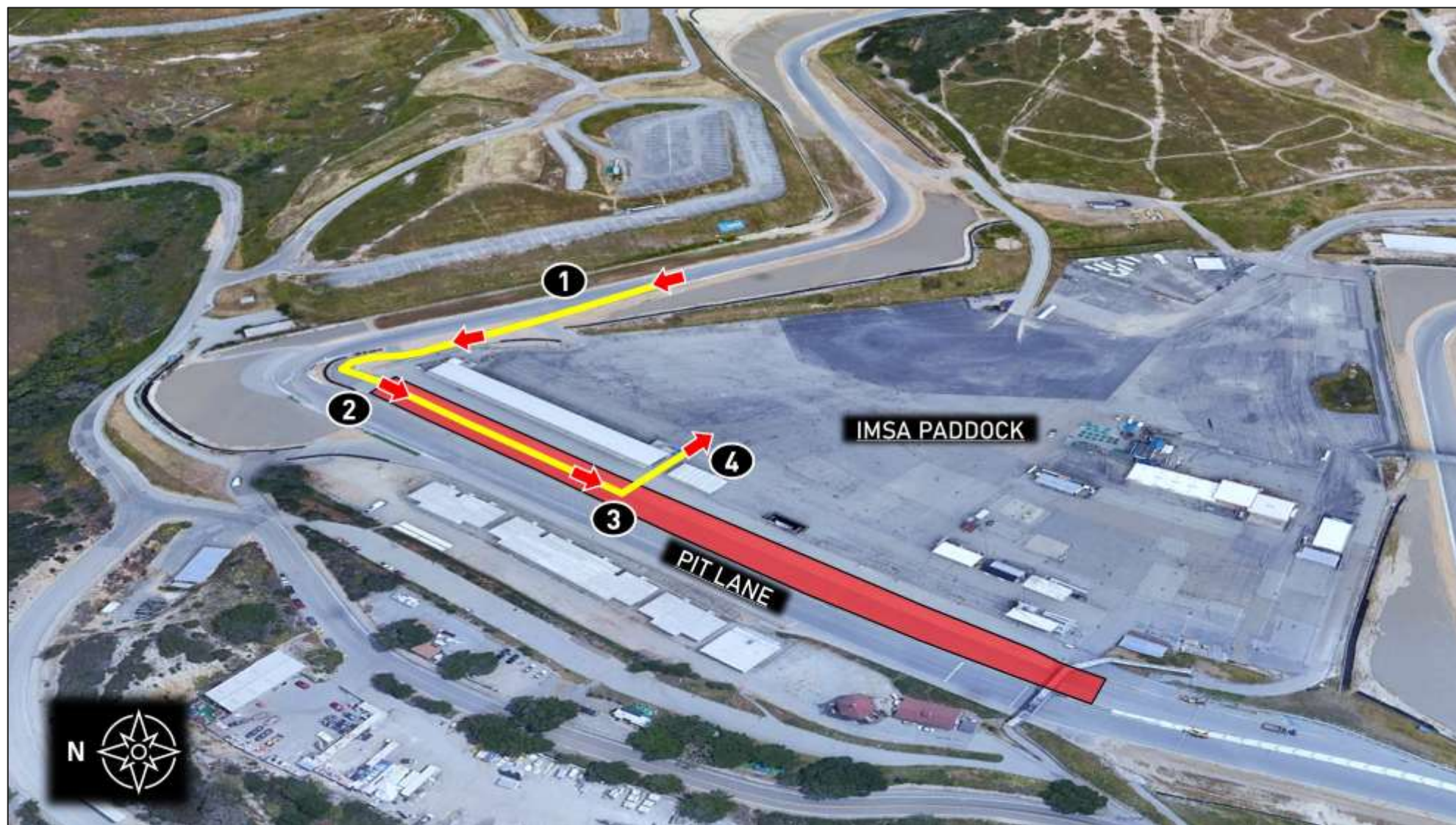


## Directions

1. Exit racecourse onto Pit Lane
2. Continue down Pit Lane
3. Exit Pit Lane on drivers' left, past pit row suites
4. Proceed to assigned team paddock space / set-up

## Notes

- All cars must be pushed through the garage gate before entering the paddock



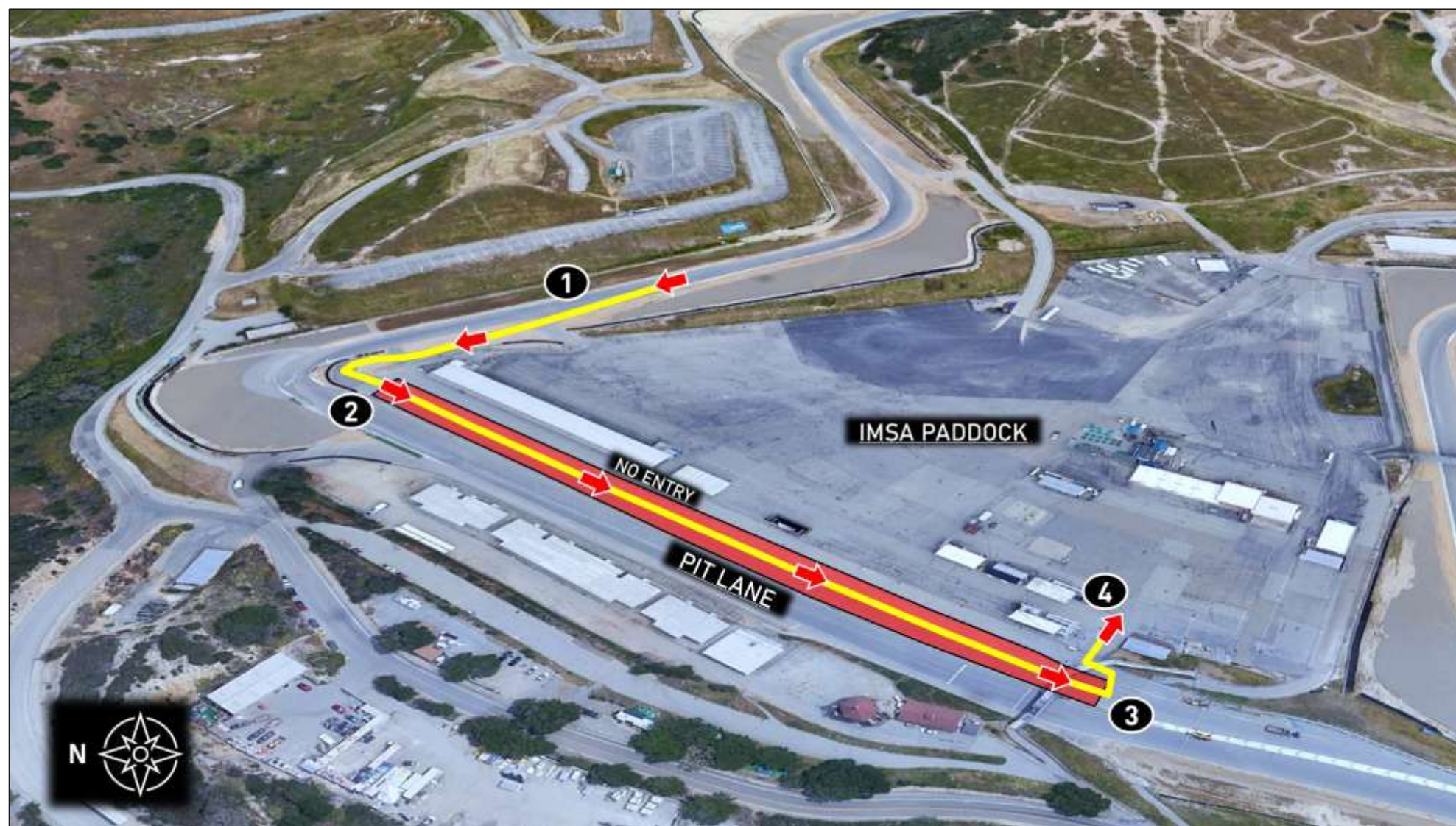


## Directions

1. Exit racecourse onto Pit Lane
2. Continue down Pit Lane
3. Exit Pit Lane on drivers' left, past foot bridge. Sharp left turn to enter paddock area
4. Proceed to assigned team paddock space / set-up

## Notes

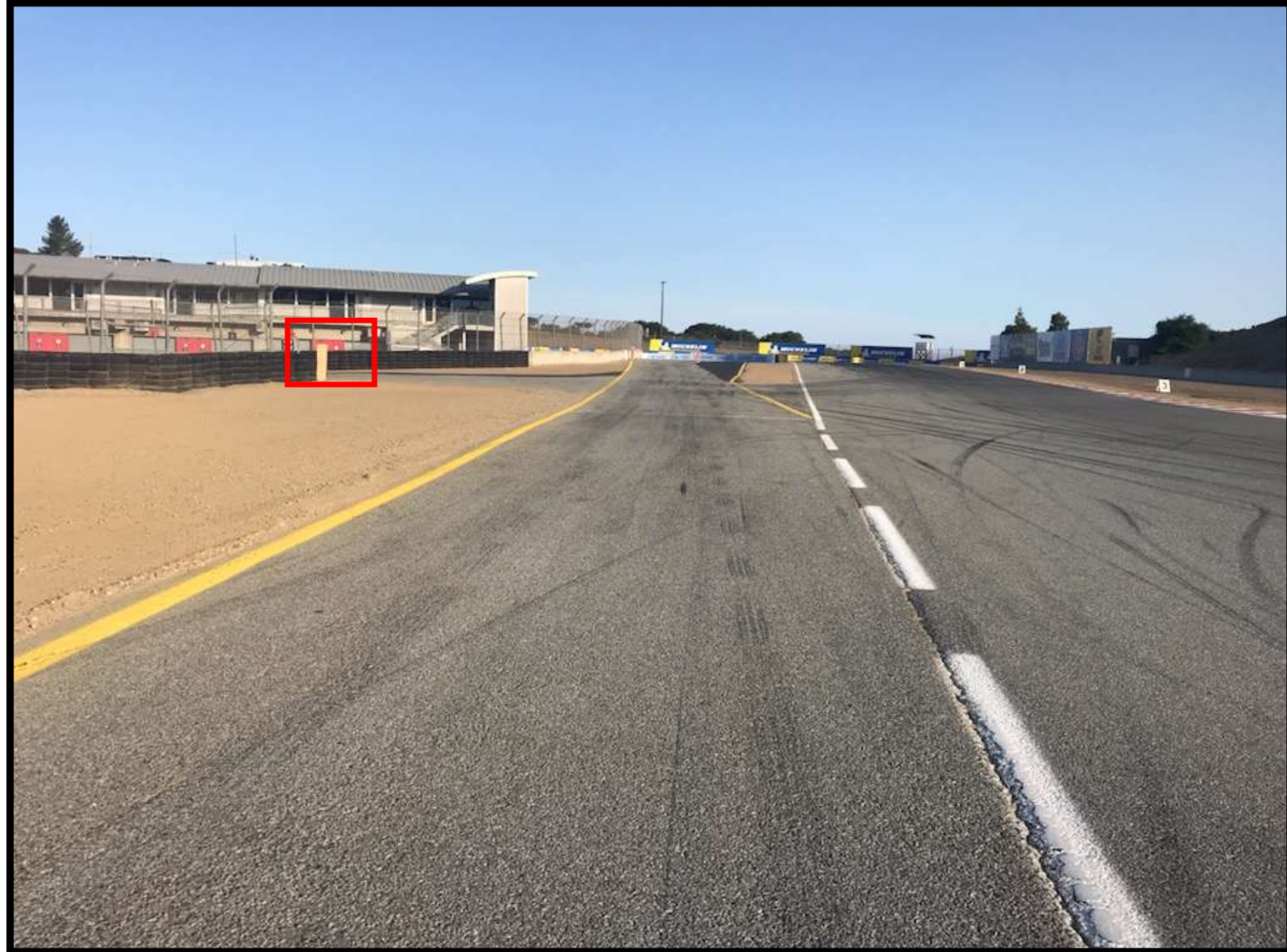
- There will be no paddock access at entrance nearest Pit Lane structure





# PIT COMMIT / PIT LANE SPEED START

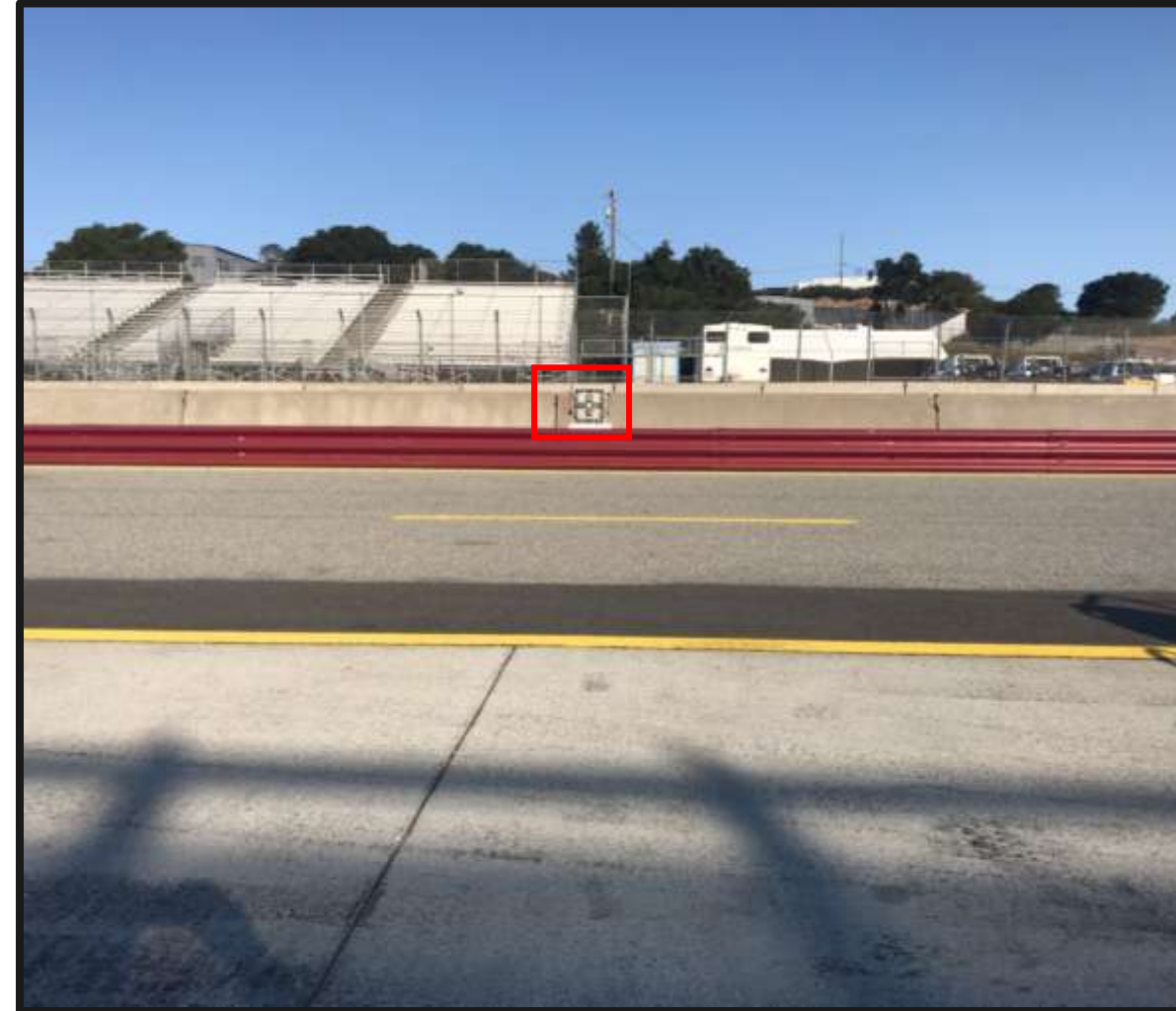
- Must have part of car touching or be to the left of the dashed white line that divides the racetrack from pit entry prior to the pit closed light illuminating in order to be considered committed to the pits.
- Pit lane speed limit begins at red pylons





# PIT CLOSED REPEATER LIGHT

- Two, positioned on pit wall for Team Managers



# PIT LANE PROTOCOL





# PIT EXIT / PENALTY BOX

- Pit exit / Penalty Box



# PIT EXIT CLOSED

- Pit exit closed light





# PIT EXIT MERGE

- Cars exiting the pit lane must remain four wheels to the left of the merge line until it ends in Turn 2
- Cars on track must respect the speed difference of those in the pit exit merge lane
- Track limits will be enforced



# PIT EXIT MERGE

- Cars exiting the pit lane must remain left until Turn 3
- Merge safely with faster cars on track
- Respect the speed difference of those already on track





# ORANGE OVERLAPS



# ORANGE OVERLAPS





# RESTART ACCELERATION ZONE

- Restart Acceleration Zone is Turn 11



# RACE START

- **Two (2) Formation Laps**
- **Safety Car(s) enter track using full Pit Lane exit**
- **Split Start – GS and TCR (Two Safety Cars)**
- **Pack up first time by / Pair up at Turn 6**
- **Stay with Safety Cars**
- **Safety Cars enter Pits**
- **Acceleration point**
  - **Polesitters to maintain pace of the Safety Car to acceleration point**
- **Column Passing and Lane Changes are prohibited prior to the start line**
- **Jump/False start Reviews**
  - Gaps
  - Timed/Early Acceleration
  - Out of Line
  - Column Passing



# FULL COURSE YELLOW (STANDARD)

- **Pits Closed**
- **Full Course Yellow**
- **Overall Leader – Safety Car speed**
- **Safety Car dispatched from Pit Exit to Overall Leader**
- **Pack Up**
- **Pass-Around**
- **Pits open (GS)**
- **Pits open (TCR)**
- **Final Wave-By**
- **Class Split**
- **Restart**
- **Emergency service Cars must D-T**
- **Standard FCY not in effect during the last 30 minutes of a Race**
- Emergency service fuel Cars must fuel at first opportunity
- Failure to perform emergency service drive-through: Stop plus 10 seconds
- More than emergency service taken: Stop plus 60 seconds

# FULL COURSE YELLOW (SHORT)

- **Pits Closed**
- **Full Course Yellow**
- **Overall Leader – Safety Car speed**
- **Safety Car dispatched from Pit Exit to Overall Leader**
- **Pack Up\*\*\*\*\***
- **Pass-Around**
- **Pits remain closed**
- **Class Split**
- **Pits open (all classes) after all Cars pass Pit-In, coming to the restart**
- **Restart**
  - **Speed\*\*\*\*\***
  - **Gaps\*\*\*\*\***
- **Emergency service Cars must D-T**
- **Emergency service fuel Cars must fuel at first opportunity**
- **Failure to perform emergency service drive-through: Stop plus 10 seconds**
- **More than emergency service taken: Stop plus 60 seconds**



# ON TRACK

---

- **RESTARTS**
- **LOCAL YELLOWS**
- **BLOCKING / DEFENDING INCREASE RESPONSIBILITY**
  - Proactive vs. Reactive
- **CONTACT**
  - Responsibility
  - Class Racing
  - Multi-class incidents
    - Brake Zones
- **COEXISTENCE**
  - Awareness
  - Coexist

# RACE CONTROL

---

- **COMMUNICATION**

- Radio Communications
- Race Control Notification System (RCNS)/Instant Messenger
  - Race Control
  - Timing & Scoring
  - Technical Department

- **REVIEW PROCESS**

- Data
- Video
- All incidents are reviewed for the purpose of apportioning individual responsibility that may result in penalties. Race how you expect to be raced and acknowledge that there may be new competitors. Best of luck and make it a great race!



# MISCELLANEOUS REMINDERS

---

- **TRACK WALK**
  - Scheduled at all IMSA Events
  - Walk only
  - Take time to view items on official track map
- **Pairing Up for Race Starts**
- **Emergency Service**
  - Dry Type Tires to Wet Type Tires Permitted
- **Pit Lane Equipment without Crew Member**
- **Pit Lane Team Rep as Manufacturer's Rep**
  - Inform Pit Staff
  - Identification

# MISCELLANEOUS REMINDERS

- **Pass-Arounds, Final Wave-By and Class Splits are two-phase procedures.**
  - PREPARE
  - COMMENCE
  - Competitors who fail to prepare and/or commence when the commands are communicated from Race Control and subsequently lose positions will not be given positions back.
- **Multi-Class Racing**
  - Performance Differences
    - Downforce
    - Straight-Line Speed
    - Surprises
    - Interactions
    - Remain Predictable
- **Driver “Bandwidth”**



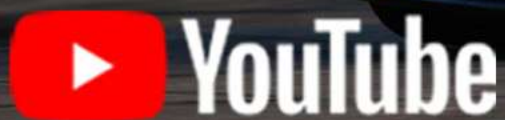
# SPORTING REGULATIONS REMINDER

## 16.1 PRIVATE IN-CAR-CAMERAS (ICC)

- May be permitted **only after** the expressed approval of IMSA, and any footage gathered from such private ICC shall **only** be for internal use by Team and Driver
- ICC installation (locations/primary & secondary retention systems, etc.) must be approved by Paul Walter, [pwalter@imsa.com](mailto:pwalter@imsa.com)
- Private ICC installation on Driver helmet prohibited (except if meeting FIA Homologation criteria for helmets listed in Art. 21.)  
[This is a specific helmet camera from a specific approved vendor only]
- Live streaming/posting of any recorded material is prohibited
- Any use of the private ICC footage by sponsors or any other third party is prohibited

## FIRST VIOLATION

- \$5,000 Entrant Fine, loss of ten (10) Team championship points and ten (10) Driver championship points per Driver in Car
  - Immediate removal of any prohibited media from visibility
- **Second and subsequent violation(s)** - \$5,000 Entrant Fine, loss of thirty (30) Team championship points and thirty (30) Driver championship points per Driver in Car
  - Immediate removal of any prohibited media from visibility



**LIVE GLOBALLY & COMMERCIAL  
FREE ALL SEASON LONG**

COURTESY OF







TEAM MANAGER BRIEFING



# WEATHERTECH RACEWAY LAGUNA SECA 120

SATURDAY, MAY 10 AT 3:40PM ET

peacock  YouTube





Let Racing Force help you plan for your upcoming racing season with OMP, Bell and Racing Spirit Products!

Racing Force is one of IMSA's longest standing Partners, with more than 15 years as one of IMSA's Proud Partners.

For 2025 Racing Force is offering a **30% discount** on all Racing Force Products to IMSA competitors and teams. This discount can be applied by confirming your participation in an IMSA sanctioned series with the Racing Force Team.

To order Racing Force Products or for more information, please contact:

**Kenji Yrey**

Custom Products & Logistics Coordinator

[Kenji.yrey@racingforce.com](mailto:Kenji.yrey@racingforce.com)

786-479-4722





**RACING OPTICS®**

Looking for windshield tear-offs?

Racing Optics, a Proud Partner of IMSA, is the industry leader in multilayer, laminated tear-offs, and is proud to offer their product and installation services to IMSA teams and competitors.

For those looking to purchase product away from the track, Racing Optics is excited to offer IMSA teams and competitors a special **20% off promo code** for Racing Optics windshield tear-offs on Pro-Tint's [online shop](#).

Use code **"IMSA20"** at checkout to receive your discount.

To schedule an install or for more information, please contact:

**Chris Colton**

Applications Engineer / Sponsorships & Corporate Relations

[C.Colton@racingoptics.com](mailto:C.Colton@racingoptics.com)

980-439-6485





**Preventative Maintenance | Repairs | Evaluations | Upgrades**

**To schedule at-track support, please email:**

**[tracksupport@evolvetransporters.com](mailto:tracksupport@evolvetransporters.com)**





# STAY\*FROSTY<sup>®</sup>

## PERFORMANCE COOLANTS

Stay Frosty<sup>®</sup> Race Ready is a proprietary VP Racing Fuels coolant formulated for high-compression, high-heat racing engines. It contains a specialized blend of heat transfer agents that drastically improve coolant's ability to transfer heat away from high temperature cylinder heads. Temperatures of engines are reduced by up to 30°F compared to conventional glycol-based coolant.

***100% Water-Based Glycol-Free Formula***

***Reduces Engine Temps Up to 30°F***

***Blended with Chemically Stable Reverse Osmosis Water***

***Ready-To-Use – Just Pour In (Also Available in Clear)***



OFFICIAL PERFORMANCE COOLANT

***Lower Temps.  
More Power.***