

PORSCHE CARRERA CUP NORTH AMERICA

SEBRING

TEAM MANAGER BRIEFING

PORSCHE

CARRERA CUP
NORTH AMERICA

SERIES CONTACTS

PORSCHE
CARRERA CUP
NORTH AMERICA

Christoph Von Liel	One Make Manager	(424) 482-6197
Ryan Anselmo	Series Manager	(424) 339-9432
Mario Brown	Technical Support	(470) 952-9509
Michael Yanase	Parts Support	(678) 938 1310
Jeremy Sundt	Race Series Specialist	(470) 419-9489
Justin Cornelison	Mar/Comms Specialist	(404) 716-2961



Casey Carden	Race Director	(770) 519-7190
Duane Sampson	Director, Single Make	(386) 285-7021
Austin Farr	Coordinator, Single Make	(386) 293-1702
Cory Posocco	Paddock Logistics	(386) 566 8313
Scott Ellison	Technical	(734) 621-9130
Johnny Knotts	Pit Lane Supervisor	(813) 763-4669
Gayle Burnham	Administration	(386) 235-7800
David Pees	Timing & Scoring	(386) 308-8866
Ryan McLean	Medical Liaison	(386) 285-6913
Roy Spielmann	Track Services	(414) 702-0905
Robert Bosworth	Safety & Security	(704) 728-8087

IMSA RESOURCES

IMSA COMPETITOR LANDING PAGE:

<https://www.imsa.com/competitors/>

- Team Portal
- Event Information
- Rules & Regulations
- Marketing & Branding Page

IMSA NOTICE BOARD:

<http://results.imsa.com/>

- Driver & TM Briefings
- Entry Lists
- Minute by Minute
- Timing Results
- Penalties

WELCOME TO THE 2025 IMSA COMPETITION LANDING PAGE

FOR ALL IMSA COMPETITOR INFORMATION PLEASE CLICK THE HAMBURGER MENU AT THE TOP LEFT OF THIS PAGE.

The one-stop shop for everything you'll need to get your team on track.

[2025 Team Portal](#)

[2025 Driver Portal](#)

[Media Center](#)

[Team and Driver Video & Photo Licensing](#)

[IMSA Marketing and Branding Resources](#)

[Race Results](#)

[Ferrari Challenge Race Results](#)

[Special Michelin Fleet Pricing for Commercial/Light Truck Tires and Service - For ALL IMSA Members](#)

[Special Michelin Discount Program for Passenger Tire - For ALL IMSA Members](#)

[IMSA Proud Sponsors](#)

LATEST EVENT INFORMATION



Mobil 1 Twelve Hours of Sebring

Mar 12, 2025 to Mar 15, 2025

Sebring, FL

Resources:

[Professional Schedule & SR 1/8/25](#)

[Track Map](#)

IMSA NOTICEBOARD

SEASON: 2025 | EVENT: Rolex 24 - Daytona International Speedway

ROLEX 24 - DAYTONA INTERNATIONAL SPEEDWAY, SEASON 2025

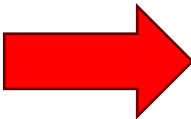
- OFFICIAL SCHEDULE - [V2](#)
- P1 BECE ASSIGNMENT - [V2](#)
- TRAINING SECTOR MAP - [V2](#)
- TRACK MAP - [V2](#)
- DRIVER PHOTOS
 - IMPC DRIVER BRIEFING - [V2](#)
 - TWO DRIVER BRIEFING - [V2](#)
 - MX-5 DRIVER BRIEFING - [V2](#)
- CHANNEL LIST
 - ROLEX ON CHANNEL LIST - [V2](#)
- ENTRY LIST
 - IMPC P18-RACE ENTRY LIST - [V2](#)
 - TWO P18-ENTRY ENTRY LIST - [V2](#)
 - MX-5 P18-RACE ENTRY LIST - [V2](#)

PCCNA EVENT INFORMATION

The screenshot shows the IMSA website's navigation menu on the left, including links for HOME, EVENT INFORMATION (highlighted), TEST EVENT INFORMATION, RULES & REGULATIONS, MARKETING & BRANDING, FORM & APPLICATIONS, IMSA, and PROUD SUPPLIERS. The main content area features a row of logos for various IMSA series: WeatherTech Sportscar Championship, Michelin Pilot Challenge, VP Racing Sportscar Challenge, Ferrari Challenge, and Mustang Challenge. Below these is a banner for 'Shop Official 2025 IMSA Merchandise' with a link to www.teamimsa.com and images of merchandise. The central focus is the '2025 PORSCHE CARRERA CUP NORTH AMERICA EVENT INFORMATION' section, which includes links for '2025 COMPETITOR RESOURCES', 'MAZDA MX-5 CUP', '2025 YOKOHAMA TIRE RESOURCES', and 'PORSCHE CARRERA CUP'. The '2025 EVENTS' section is partially visible at the bottom, listing 'Sebring International Raceway'.

2025 COMPETITOR RESOURCES

2025 EVENTS



Sebring International Raceway

Mar 12 to Mar 15

Sebring, FL

Download:

[Provisional Schedule & SR 1/8/25](#)

[Track Map](#)

Directions

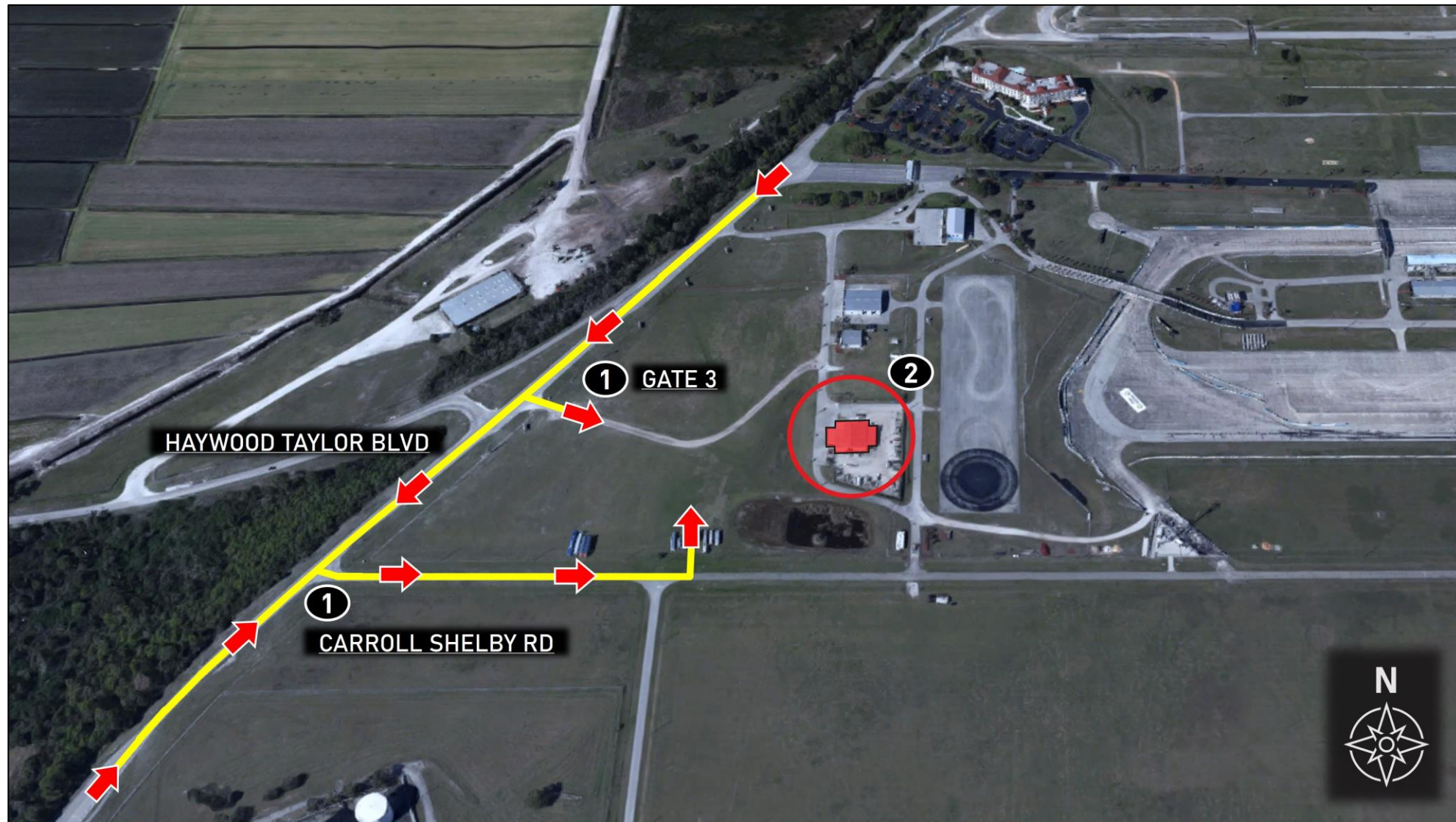
1. Take Haywood Taylor Blvd to Carroll Shelby Rd or Gate 3

If accessing via Carroll Shelby Rd - take first left on access road leading to IMSA Registration parking

2. Follow signage to IMSA Registration (red shaded area)

Notes

- Address: 150 Earwood Blvd, Sebring, FL 33876
- Refer to Official Schedule / SR for Registration hours of operation



EVENT INFORMATION

PARKING PROCEDURES:

- **PCCNA** Entries each receive **one (1)** infield parking pass valid from Wednesday through Friday and are available for pickup from Tuesday at IMSA Registration
- From Tuesday, March 11, parking restrictions are in force and all parking must use the Ulmann / IMSA Competitor lot outside the back straight (accessed from Gate 5)
- This lot has a cold-track pedestrian crossover directly to the Paddock, available whenever Cars are not on track, and shuttles/trams go from the lot to the Competitor Paddock per the schedule listed on the event SR
- At all other times Trams go to a transfer hub located on the Skid Pad where individuals transfer to a tram to the Competitor Paddock
- Individuals with a 2025 Annual Credential, a single event credential (SEC), or a 2025 Annual parking pass are permitted to park in the Ulmann / IMSA Competitor Lot without an additional parking pass
- **PCCNA** passes valid **Wednesday – Friday**

» TEAM PARKING LOCATIONS



Locations

1. Red Star Team Parking

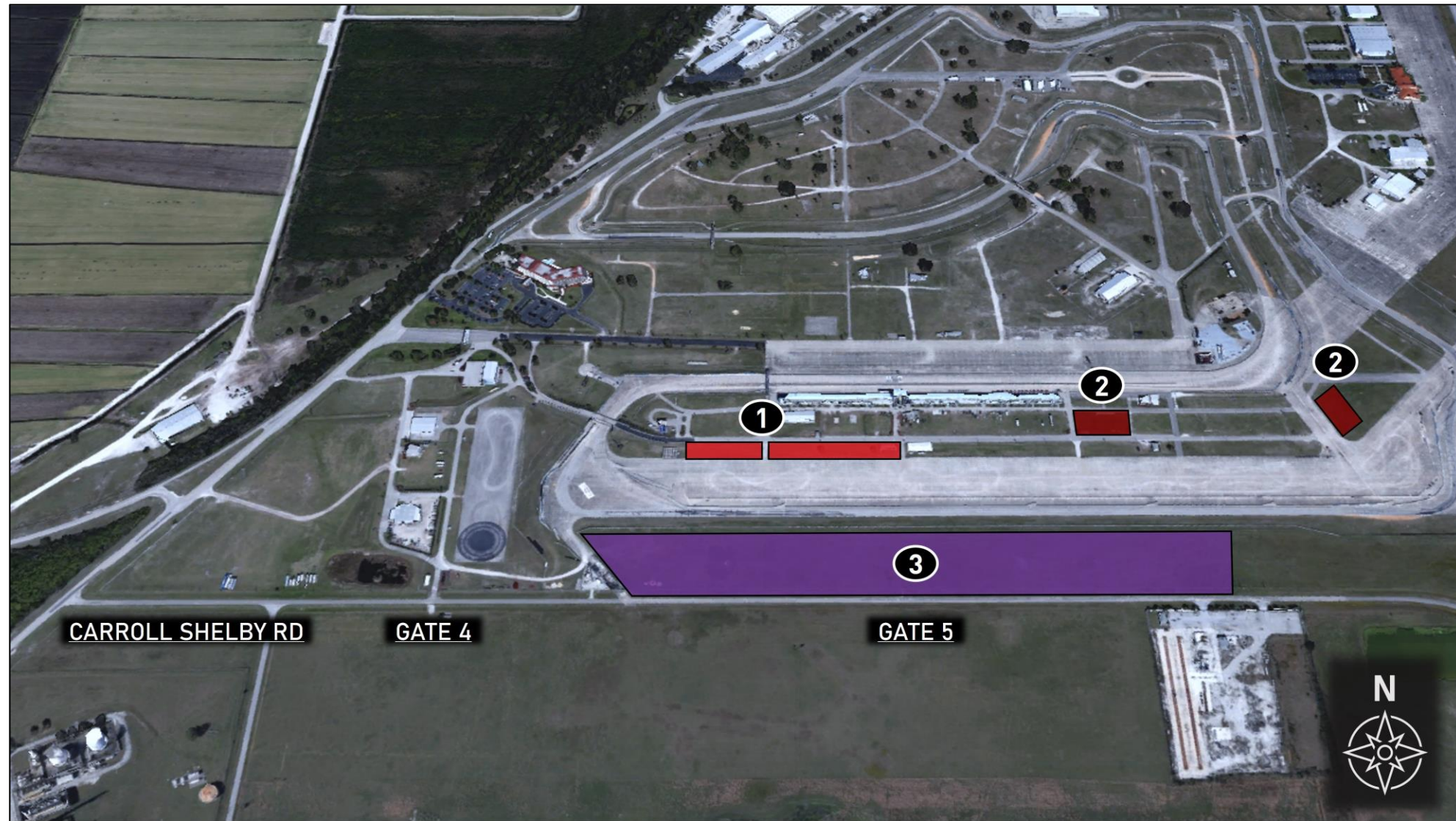
- Red Star parking pass required for entry
- Valid from Wed, Mar 12 - Sat, Mar 15

2. Red Circle Team Parking

- Red Circle parking pass required for entry
- Valid from Wed, Mar 12 - Sat, Mar 15

3. Ulmann Team Parking

- Access via Gate 5
- IMSA hangtags or credentials required for entry
- Valid from Mon, Mar 10 - Sat, Mar 15
- Tram service available to Paddock. Cold Track Crossover open starting Mon, Mar 10 (dependent on track schedule)



» TO ULMANN TEAM PARKING

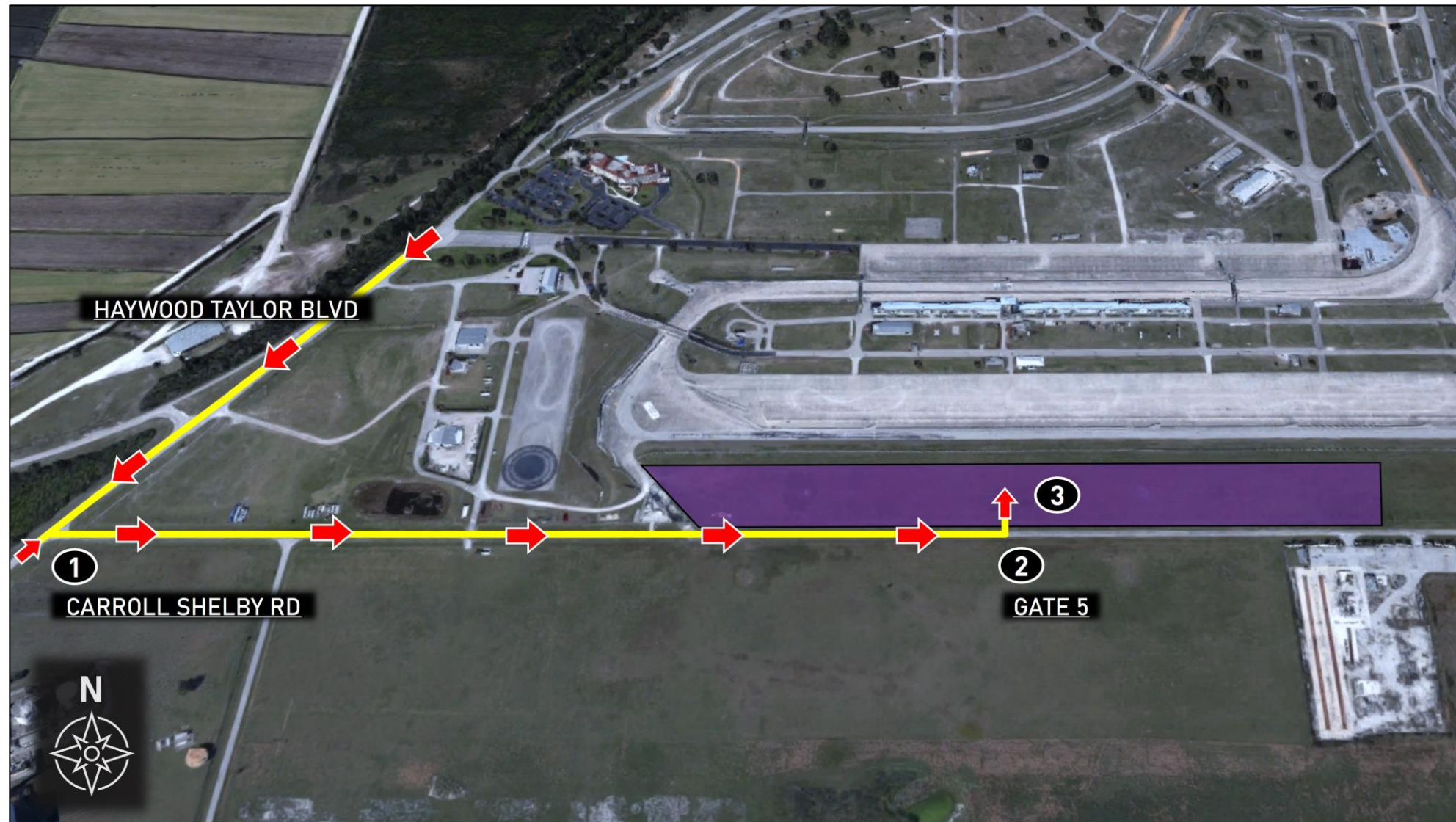


Directions

1. Take Haywood Taylor Blvd to Carroll Shelby Rd
2. Turn left off Carroll Shelby Rd entering track via Gate 5
3. Park in designated Ulmann parking area

Notes

- Valid from Mon, Mar 10 - Sat, Mar 15
- Tram service available to Paddock. Cold Track Crossover open starting Mon, Mar 10 (dependent on track schedule)
- IMSA annual hangtags or credentials required for entry



EVENT INFORMATION

GOLF CARTS

- **PCCNA** Teams are permitted **one (1)** support vehicle (golf carts/tuggers) in the Paddock area per entered Car.
- Access stickers available from Carol Mueller in the IWSC series transporter starting Tuesday, March 12

PIT VEHICLES

- **PCCNA** Teams are permitted **one (1)** support vehicle (golf carts/tuggers) in the pit lane area per entered Car.
- Access stickers available from Carol Mueller in the IWSC series transporter



PADDOCK

**PROHIBITED:
ANY ONE, TWO OR
THREE-WHEEL FORM OF
TRANSPORTATION**

**ONLY PROPERLY
PERMITTED VEHICLES ACCEPTED
EXCEPTIONS FOR VESTED MEDIA
AND ADA TRANSPORT**

Motorcycles, drones, bicycles, skateboards, rollerblades and other non-motorized transportation, as well as motor scooters of one, two or three-wheels and/or designed to transport one or two persons, are prohibited in the garage, pit and/or Paddock areas except authorized power-driven mobility devices (ADA requirements - Americans with Disabilities Act), and accredited and vested media personnel.

Pit vehicles must only be operated by an IMSA credential holder. Motorized carts and similar 3- or 4-wheeled conveyances must not be driven into pit lane except pit equipment approved for a Series or as specified in the SR.

Such use in the Paddock must be for legitimate purposes only.

Excessive speed and/or unsafe operation is prohibited. Participants must abide by state laws and Promoter restrictions regarding licensing, maximum speed, helmet requirement and use.

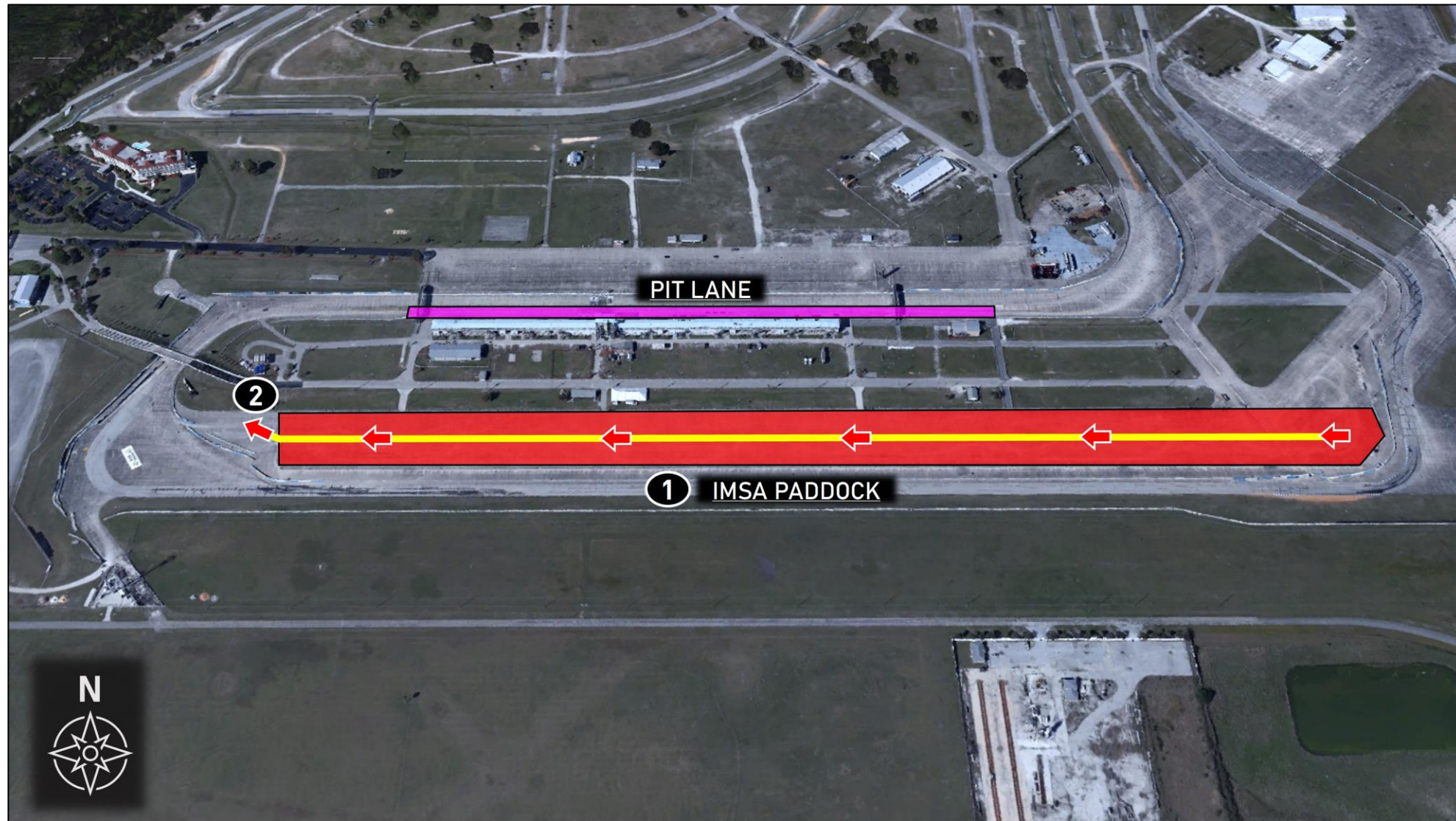
Such conveyances may be prohibited at certain Events or in certain areas of each facility by local ordinance or Promoter limitation.

Directions

1. Exit team set-up and proceed west, towards Turn 17
2. Enter false grid

Notes

- Use caution and follow traffic patterns

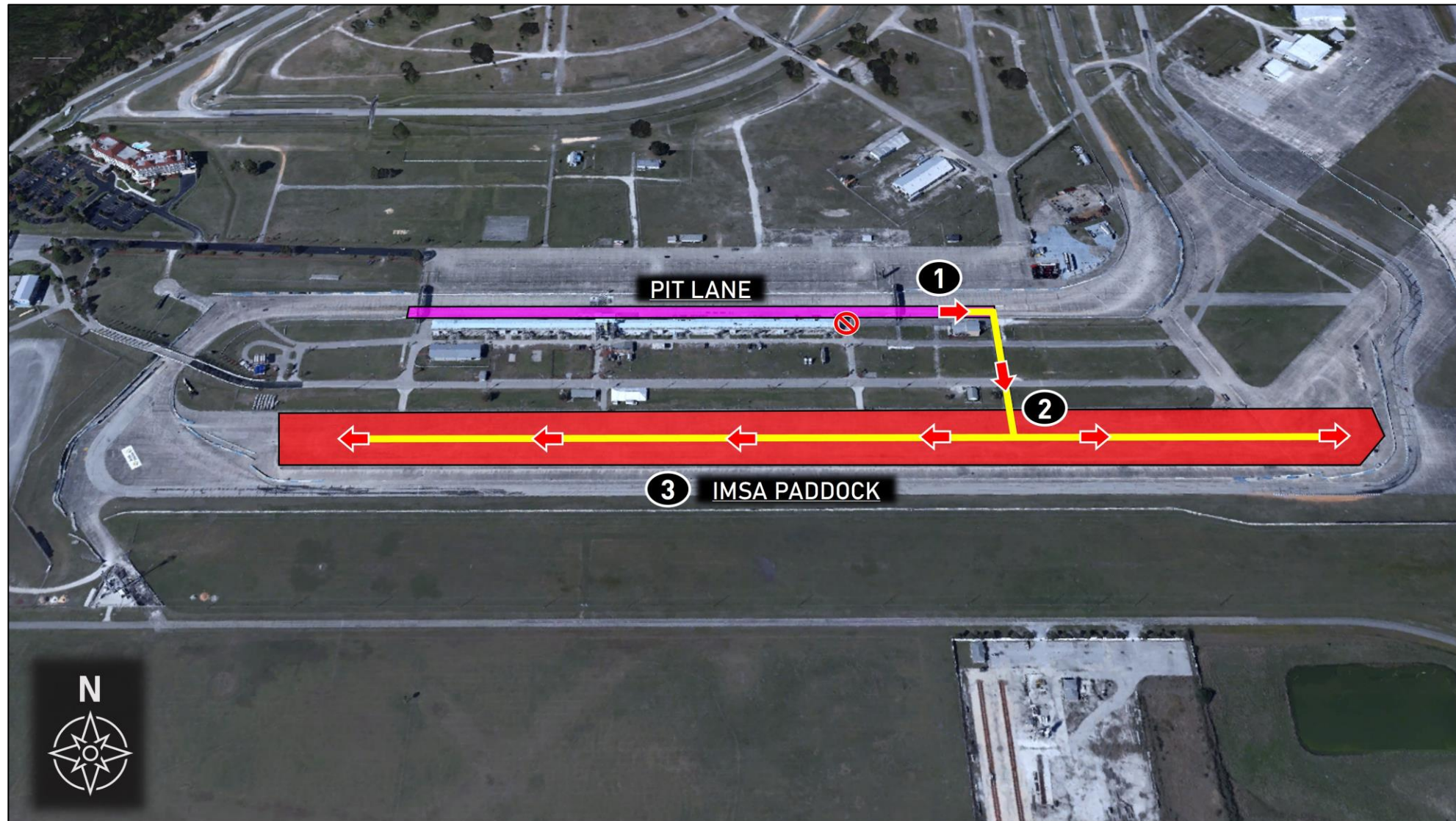


Directions

1. Exit Pit Lane at Care Center and proceed straight into IMSA paddock
2. Keep right in paddock
3. Proceed to team set-up

Notes

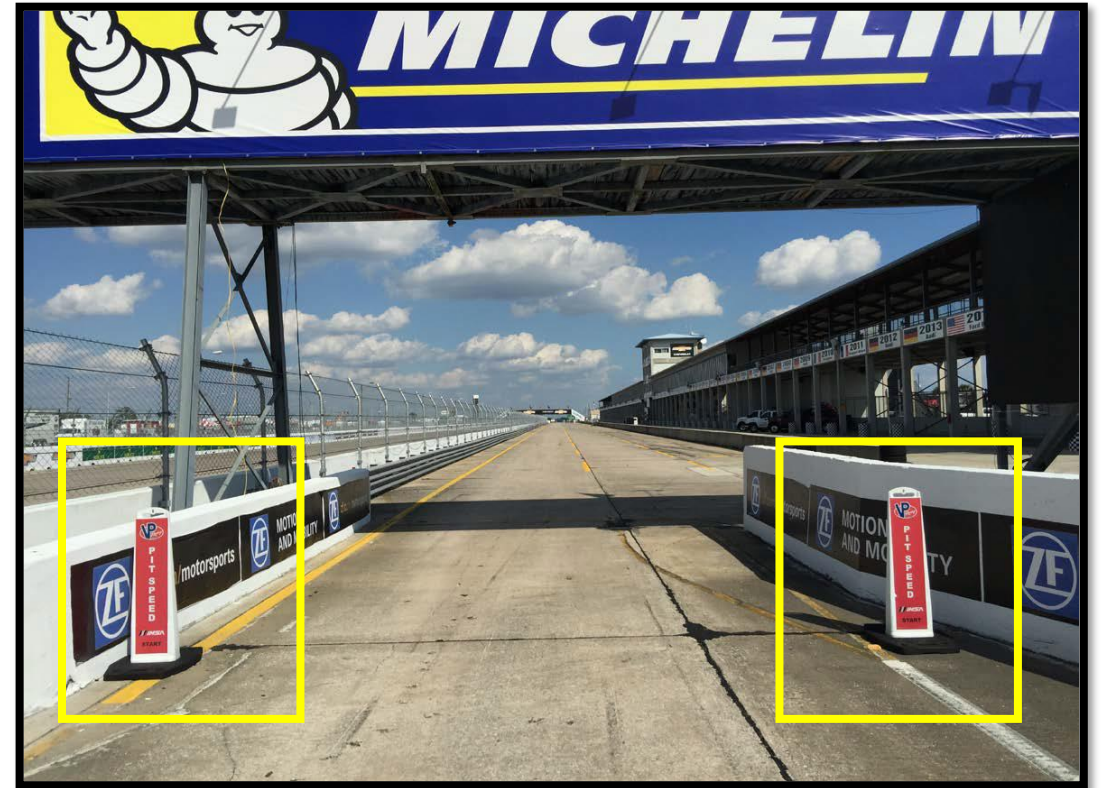
- Use caution and follow traffic patterns
- Pit Lane exit at end of Pit Structure will not be used



PIT LANE ENTRY/ SPEED LIMIT

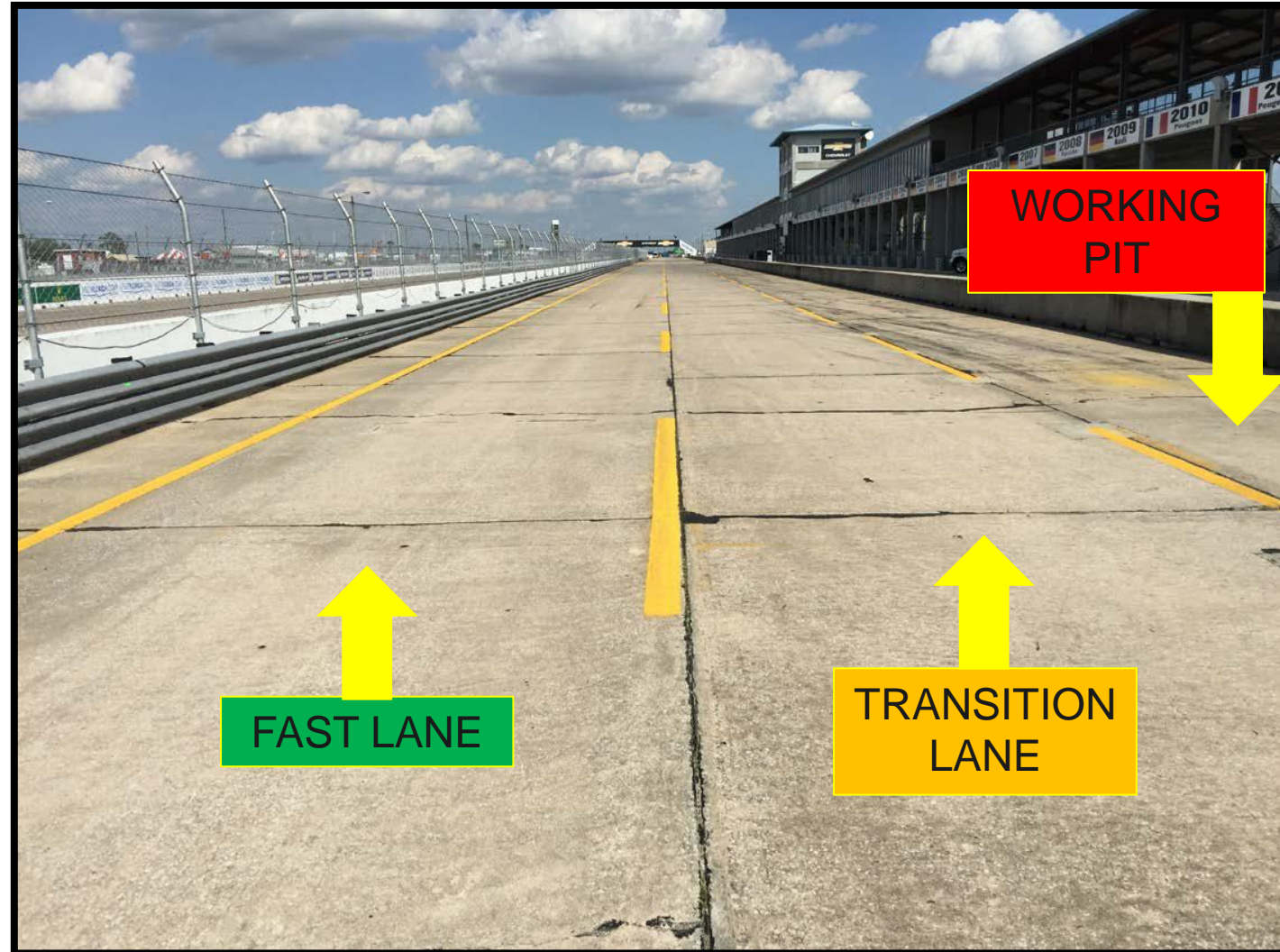


Pit Lane Entry



Pit Lane speed limit begins at red pylons(60 kph)

PIT LANE PROTOCOL



PIT LANE EXIT

Pit lane speed ends
at green pylons.



PIT EXIT/ PENALTY BOX



PIT EXIT MERGE

- Cars exiting the Pit Lane must remain two wheels to the right of the yellow merge line until it ends.
- Merge safely into Turn 1.
- Respect the speed difference of those already on track.



ORANGE OVERLAPS

- Overlaps are locations to remove disabled Cars from the track.
- Overlaps are marked throughout the circuit and indicated on the official Track Map.
- Competitors with disabled Cars on track are requested to use the overlaps whenever unable to continue to the pits.
- Turn 7 Exit via driver's left.



ORANGE OVERLAPS



RESTART ACCELERATION ZONE

- Restart Acceleration Zone is Turn 17



LOCAL YELLOW LIGHT AT TURN 17

- Used to signify a local yellow
- Solid Yellow Light
- Not part of the IMSA Yellow Light System



IMSA TRACK SERVICES

IMSA CHASE VEHICLES

- Chase 1
- Chase 2
- Chase 3
- Chase 4

ON-TRACK ASSISTANCE

- Communication with Track Services Medic
- Neutral and power shut off
- Follow direction of on-scene Track Services personnel
- Maintain a safe speed and distance when passing on-track incidents with Track Services team members present



Contact: Roy Spielmann (414) 702-0905

» CARE CENTER LOCATION

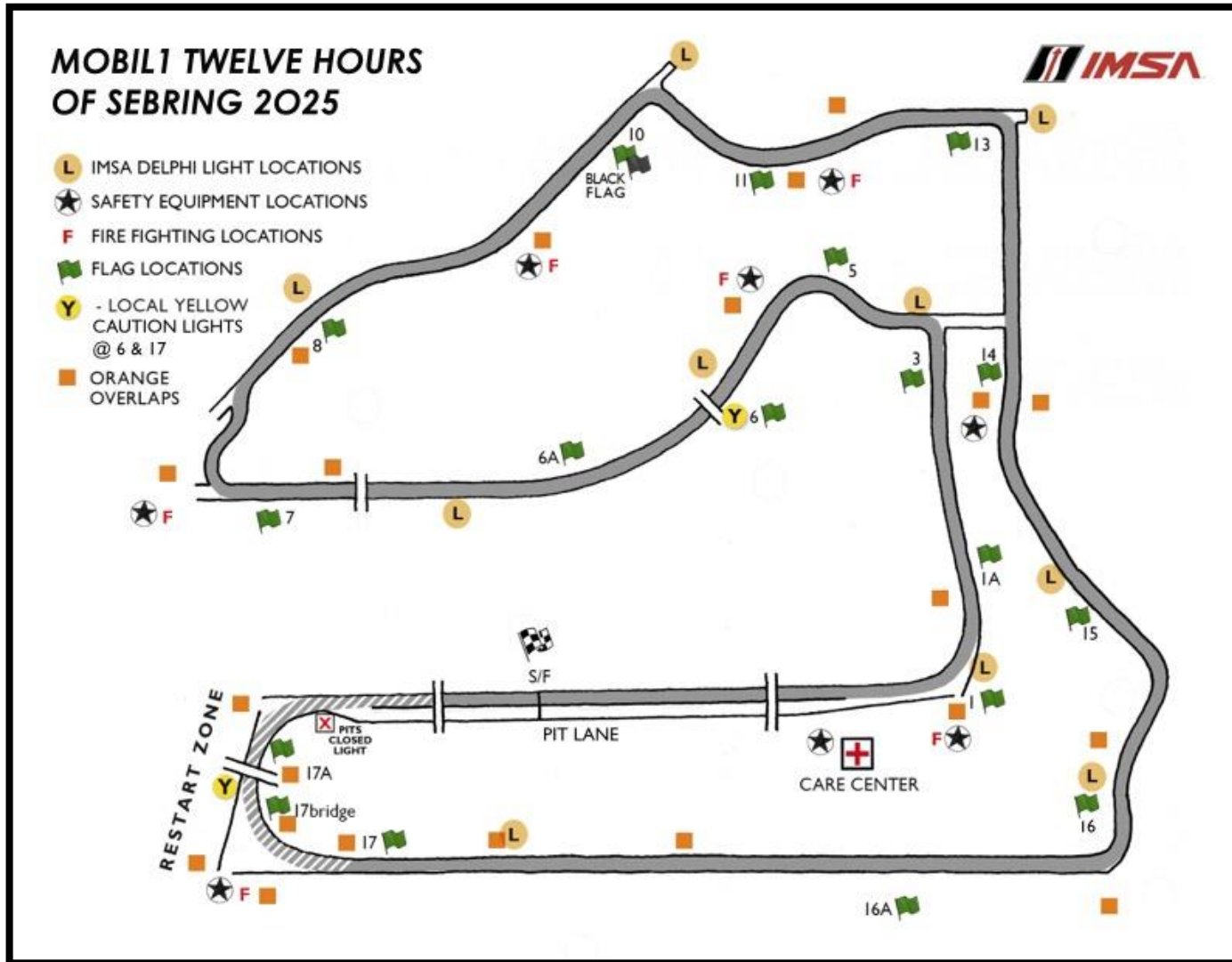


Notes

- Care Center located adjacent to Pit Lane on Eastern end, closest to Pit Out
- Refer to Schedule / SR for Care Center hours of operation



OFFICIAL TRACK MAP



SPORTING REGULATIONS REMINDER

16.1 PRIVATE IN-CAR-CAMERAS (ICC)

- May be permitted **only after** the express approval of IMSA, and any footage gathered from such private ICC shall **only** be for internal use by Team and Driver
- ICC installation (locations/primary & secondary retention systems, etc.) must be approved by Paul Walter, pwalter@imsa.com
- Private ICC installation on Driver helmet prohibited (except if meeting FIA Homologation criteria for helmets listed in Art. 21.)
[This is a specific helmet camera from a specific approved vendor only]
- Live streaming/posting of any recorded material is prohibited
- Any use of the private ICC footage by sponsors or any other third party is prohibited

FIRST VIOLATION

- \$5,000 Entrant Fine, loss of ten (10) Team championship points and ten (10) Driver championship points per Driver in Car
 - Immediate removal of any prohibited media from visibility
- **Second and subsequent violation(s)** - \$5,000 Entrant Fine, loss of thirty (30) Team championship points and thirty (30) Driver championship points per Driver in Car
 - Immediate removal of any prohibited media from visibility

DRIVER HELMET AND FHR INSPECTIONS

- Per 2025 IMSA Sporting Regulations Article 21.2, all Driver helmets must be inspected by IMSA prior to first use in the season.
- Helmets and HANS devices must be presented at IMSA WeatherTech Trailer for annual inspection.
- Helmets must display the required IMSA inspection sticker.
- The 2025 Helmet sticker indicates the helmet is compliant with the FIA 8860 standard and is equipped with the Eject System or Stand 21 “Lid Lifter” system.
- The helmet inspection does not address the safety condition of the helmet.
- IMSA Officials will also inspect the Drivers’ Frontal Head Restraint (FHR). Please ensure the HANS tether is within the five (5) years mandated by FIA.
- Will be monitored on the false grid and Drivers must have helmets inspected prior to qualifying.

IMSA SEVERE WEATHER PLAN

- IMSA uses the DTN Weather Service with Lightning Detection.
- Notifications are sent (as in past years). Message will start with "IMSA MESSAGE":
 - Within 30 miles of the track – Advisory message sent for informational purposes.
 - Within 20 miles of the track – Cautionary message sent to increase awareness and trigger protective actions for personnel and equipment.
 - Within 8 miles of the track – Full-Stop message sent for personnel to stop all activities and seek shelter due to potentially dangerous conditions.
 - IMSA continues to send periodic updates through the messaging service while on-track activities are under a “full-stop”.
 - When severe weather has moved out of the area, an “all-clear” message is transmitted.

IMSA uses an internal messaging service. Text messages are sent to all credentialed attendees for an Event. There is no need to provide a recipient list.

ACCESSING EMERGENCY SERVICES

- For emergency responders' assistance (24 hours per day), dial 911. Any 911 call originating on track property will be redirected to Highlands County 911 Remote Center at the track for faster service.
- Non-emergency number for In-field Care Center is (863) 655-7735.
- Sebring Point of Contact with Aloha EMS is Billy Kingston (863) 214-7800.

PCCNA AUTOGRAPH SESSION

PCCNA DRIVER AUTOGRAPH SESSION

- Thursday, March 14
- 11:45am – 12:15pm
- Located at Craton merchandise tent (see map)
- Fan midway across from race control tower



PORSCHE PENFED DRIVER'S LOUNGE

PORSCHE
CARRERA CUP
NORTH AMERICA

PENFED
CREDIT UNION

PORSCHE PENFED DRIVER'S LOUNGE

12 Hours of Sebring, Sebring International Raceway

DATE: March 12-14, 2025

WEDNESDAY: Breakfast 7:00 am – 10:00 am | Lunch 11:30 am – 2:30 pm

THURSDAY: Breakfast 7:00 am – 10:00 am | Lunch 12:00 pm – 3:30 pm | Dinner 5:00 pm – 8:00 pm

FRIDAY: Assorted Pastries/Fruit 8:00 am – 10:00 am | Lunch 12:00 pm – 3:00 pm | Afternoon Snacks 3:30 pm - 4:30 pm | Dinner 5:30 pm – 8:30 pm

LOCATION: Porsche Penfed Driver's Lounge

RSVP: Please register your guest count incl. drivers, team members and guests by the latest on Wednesday, March 5, 2025.

YOKOHAMA **Mobil 1** **PENFED CREDIT UNION**

EBOOST **TAG Heuer** **Exxon Mobil Synergy Supreme**

sparco **APEX ONE** **IMSA**

PORSCHE CARRERA CUP NORTH AMERICA

SEBRING

THANK YOU

PORSCHE

**CARRERA CUP
NORTH AMERICA**

PORSCHE CARRERA CUP NORTH AMERICA

SEBRING

NEW DRIVER/NEW TO SEBRING

PORSCHE

CARRERA CUP
NORTH AMERICA

SERIES CONTACTS

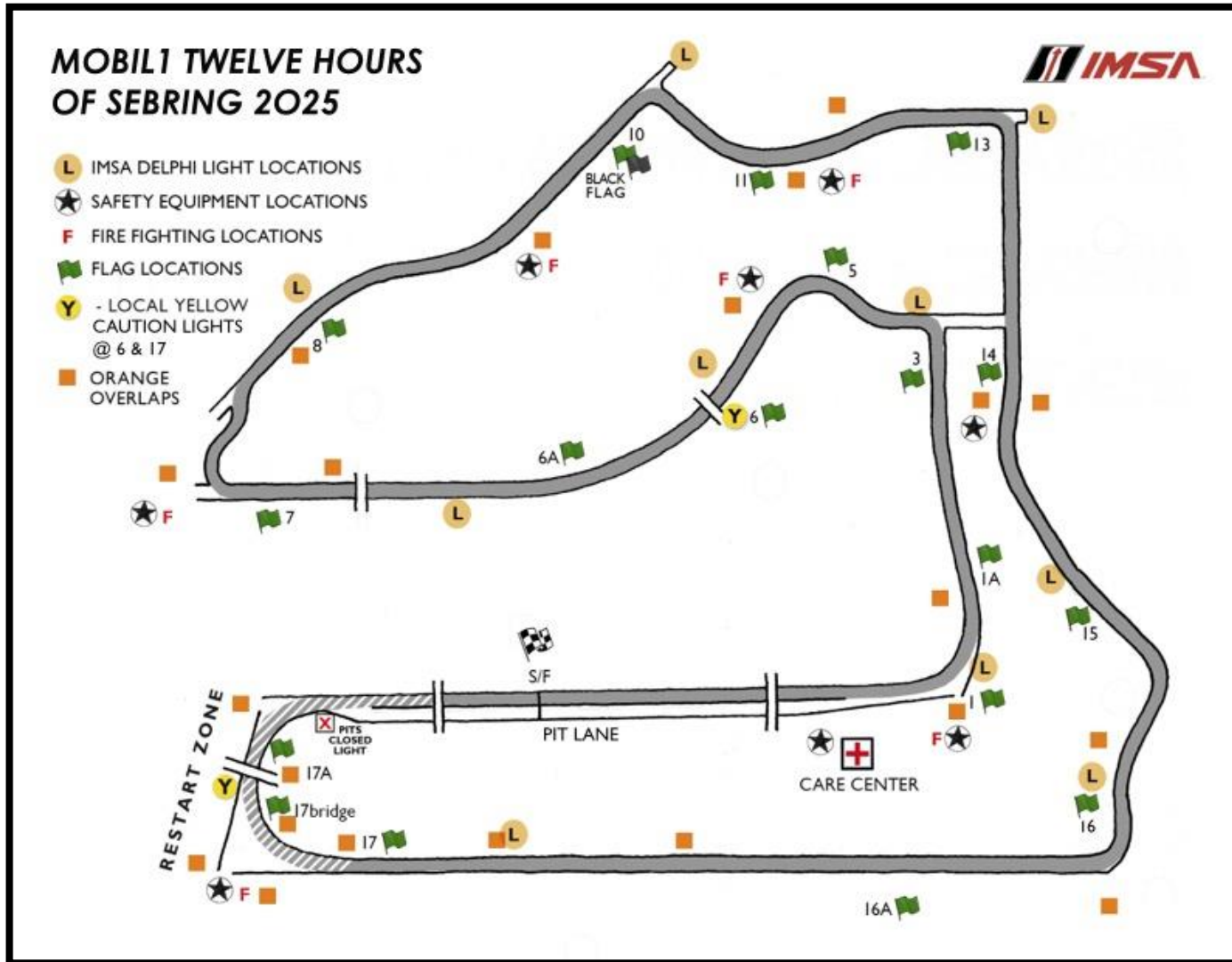
PORSCHE
CARRERA CUP
NORTH AMERICA



Christoph Von Liel	One Make Manager	(424) 482-6197
Ryan Anselmo	Series Manager	(424) 339-9432
Mario Brown	Technical Support	(470) 952-9509
Michael Yanase	Parts Support	(678) 938 1310
Jeremy Sundt	Race Series Specialist	(470) 419-9489
Justin Cornelison	Mar/Comms Specialist	(404) 716-2961

Casey Carden	Race Director	(770) 519-7190
Duane Sampson	Director, Single Make	(386) 285-7021
Austin Farr	Coordinator, Single Make	(386) 293-1702
Cory Posocco	Paddock Logistics	(386) 566 8313
Scott Ellison	Technical	(734) 621-9130
Johnny Knotts	Pit Lane Supervisor	(813) 763-4669
Gayle Burnham	Administration	(386) 235-7800
David Pees	Timing & Scoring	(386) 308-8866
Ryan McLean	Medical Liaison	(386) 285-6913
Roy Spielmann	Track Services	(414) 702-0905
Robert Bosworth	Safety & Security	(704) 728-8087

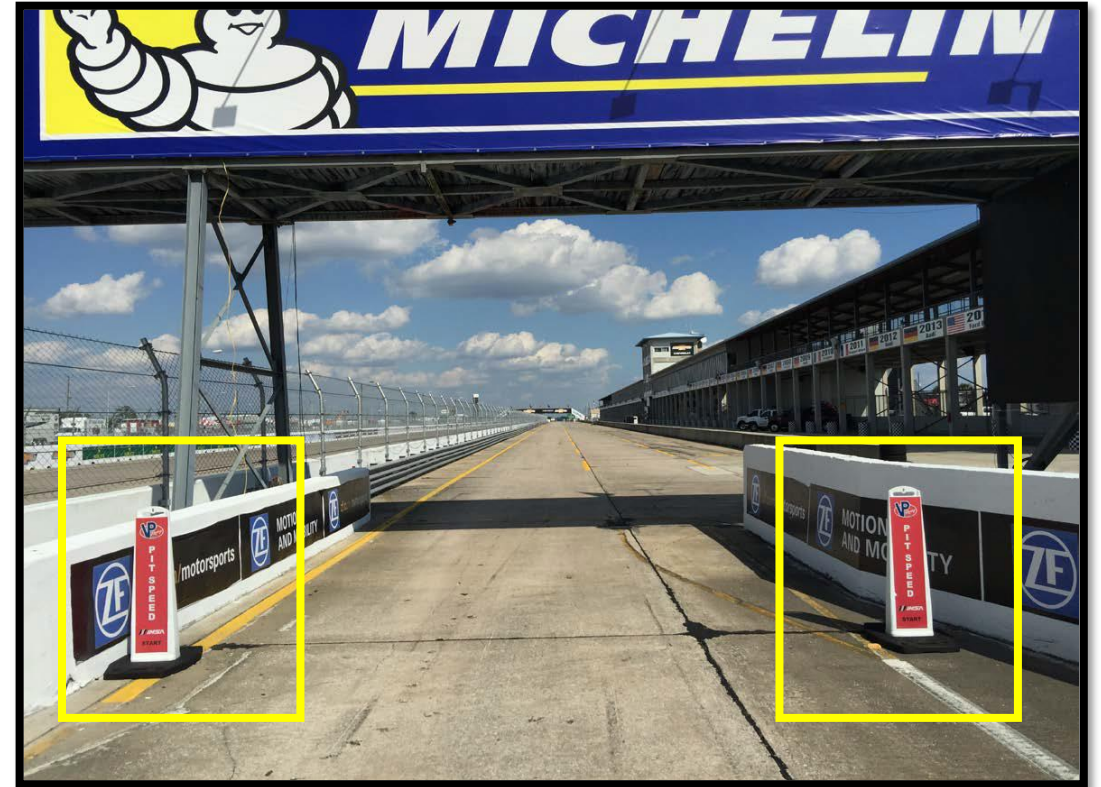
OFFICIAL TRACK MAP



PIT LANE ENTRY/ SPEED LIMIT

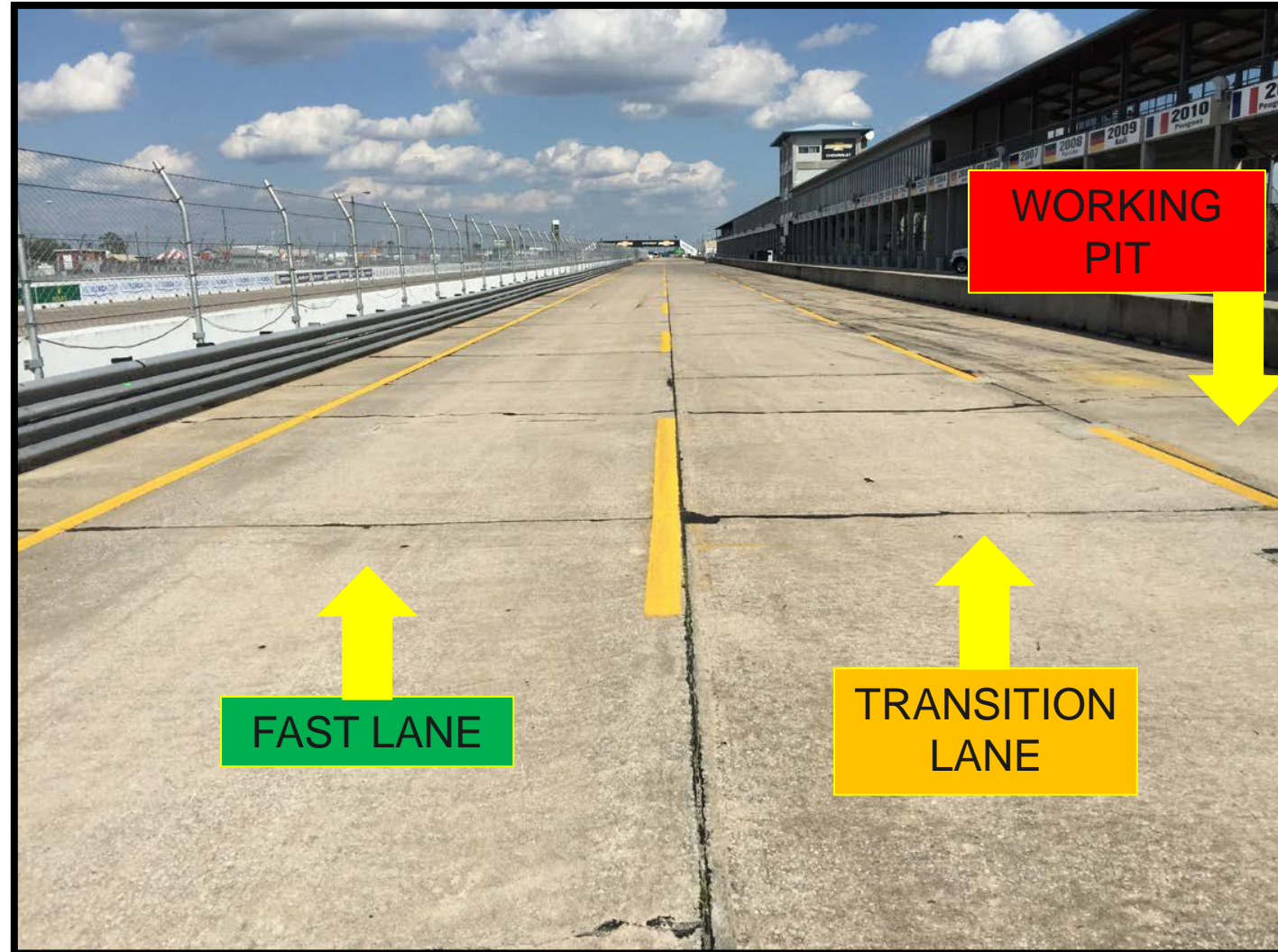


Pit Lane Entry



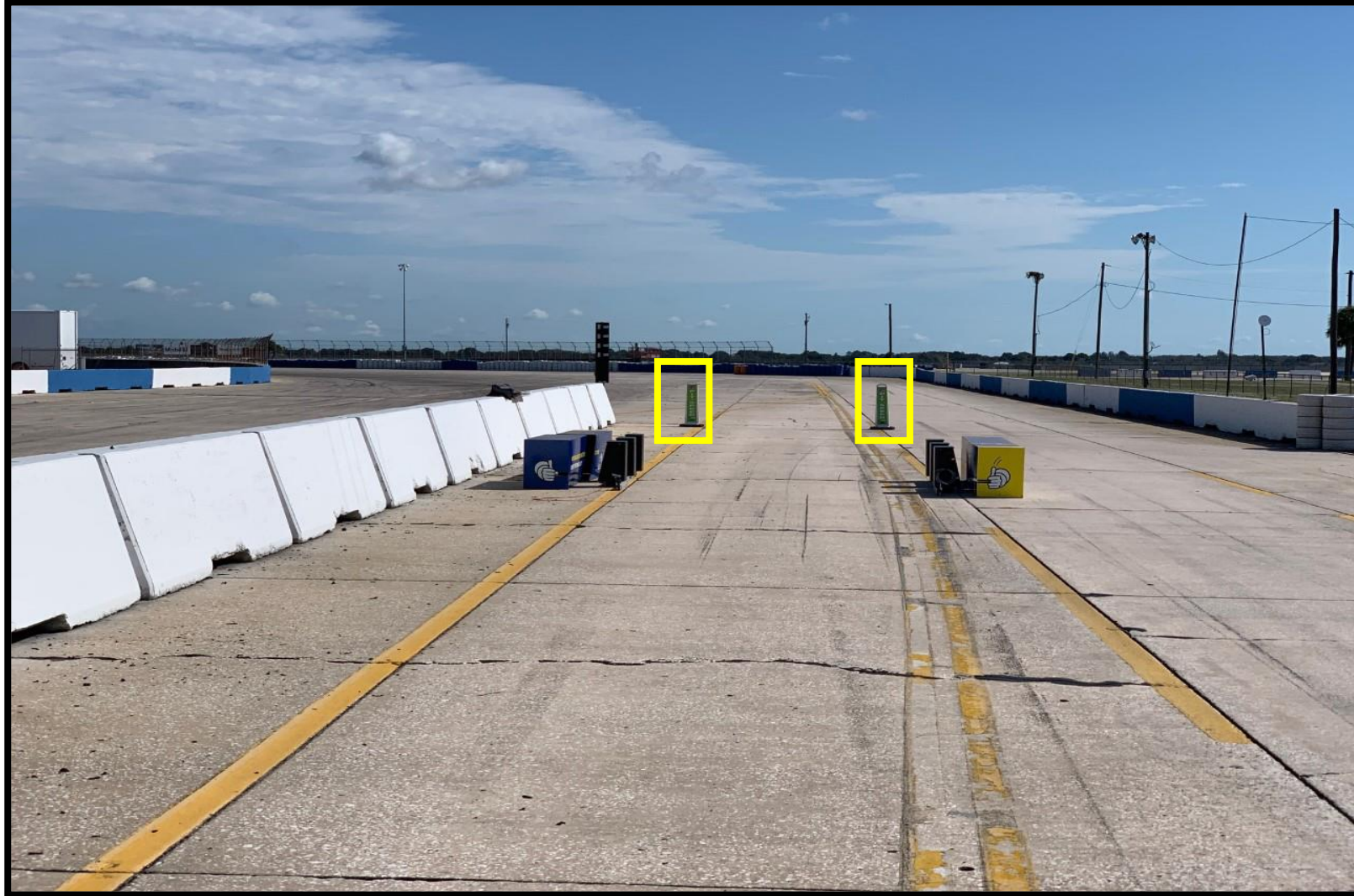
Pit Lane speed limit begins at red pylons(60 kph)

PIT LANE PROTOCOL



PIT LANE EXIT

Pit lane speed ends at green pylons.



PIT EXIT/ PENALTY BOX



PIT EXIT MERGE

- Cars exiting the Pit Lane must remain two wheels to the right of the yellow merge line until it ends.
- Merge safely into Turn 1.
- Respect the speed difference of those already on track.



ORANGE OVERLAPS

- Overlaps are locations to remove disabled Cars from the track.
- Overlaps are marked throughout the circuit and indicated on the official Track Map.
- Competitors with disabled Cars on track are requested to use the overlaps whenever unable to continue to the pits.
- Turn 7 Exit via driver's left.



ORANGE OVERLAPS



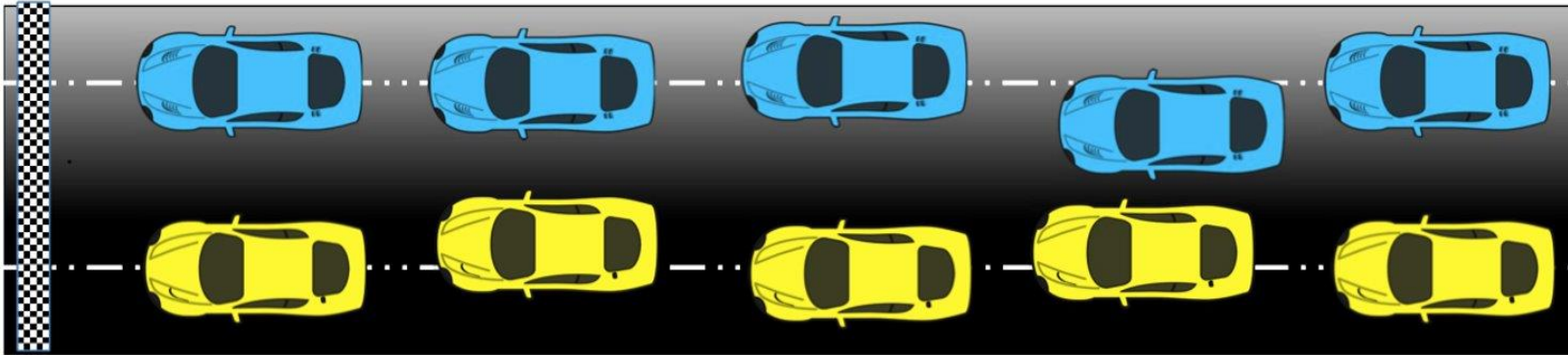
LOCAL YELLOW LIGHT AT TURN 17

- Used to signify a local yellow
- Solid Yellow Light
- Not part of the IMSA Yellow Light System

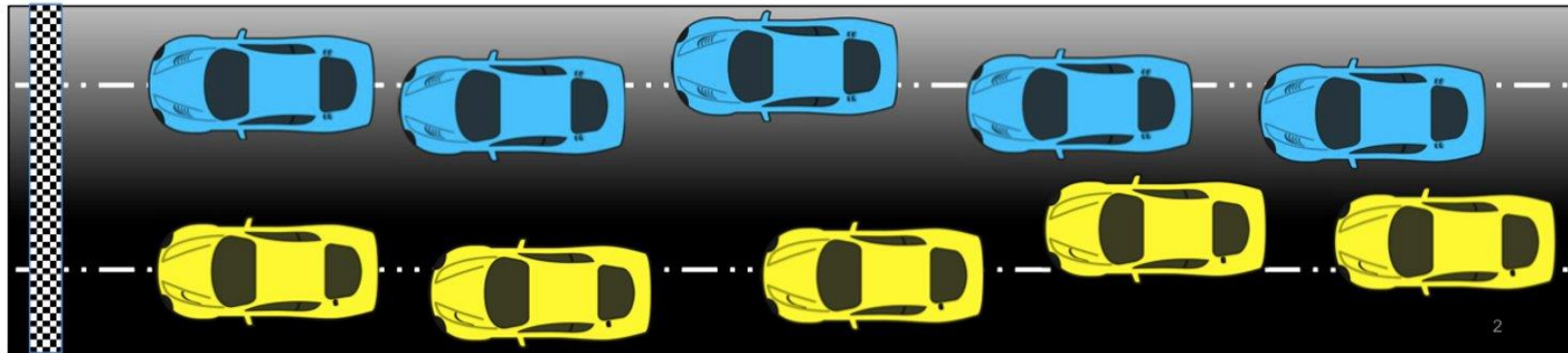


PROPER START

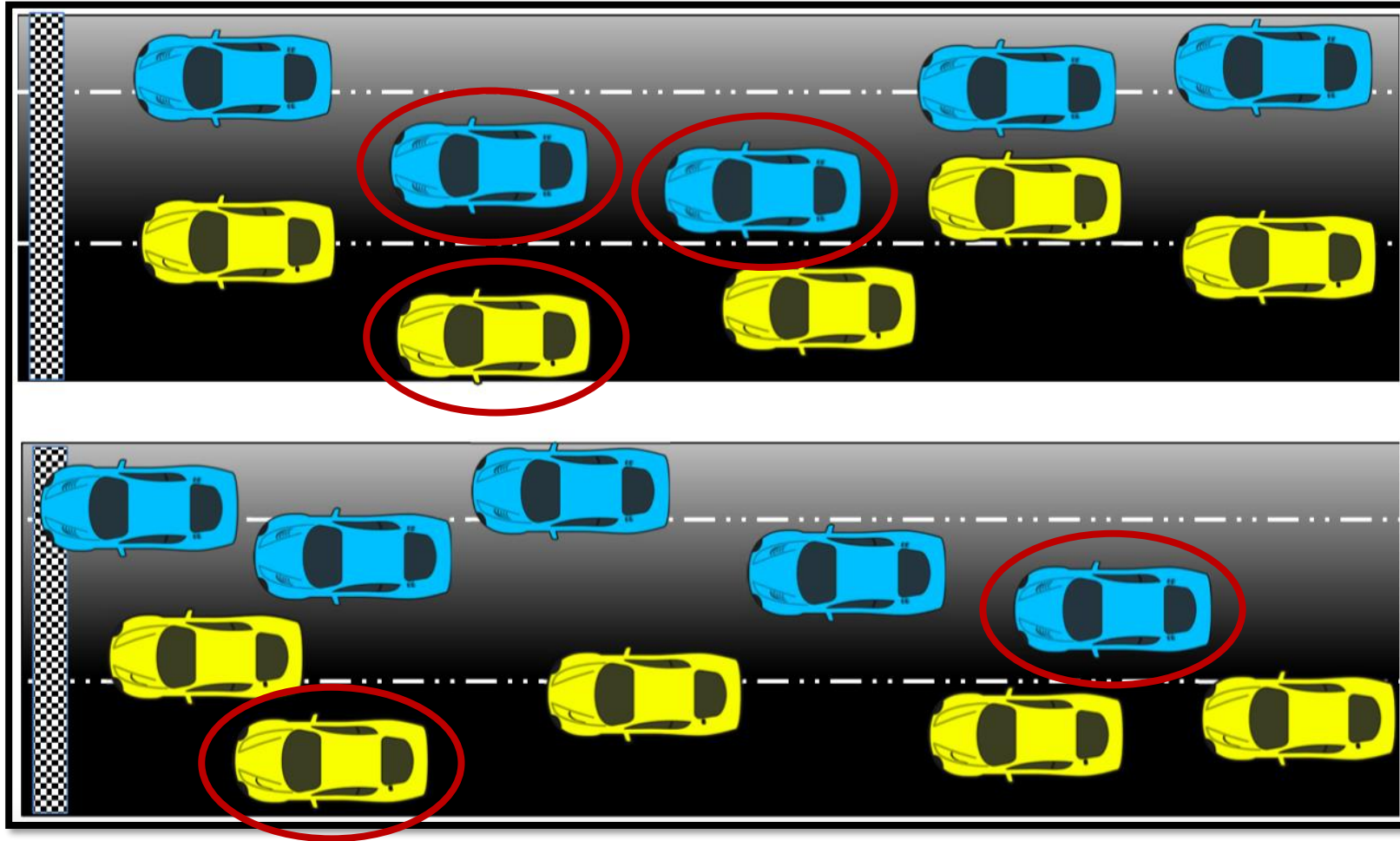
Good Overlaps:



Sloppy:



IMPROPER START- TO BE REVIEWED



PORSCHE CARRERA CUP NORTH AMERICA

SEBRING

THANK YOU

PORSCHE

**CARRERA CUP
NORTH AMERICA**

PORSCHE CARRERA CUP NORTH AMERICA

DRIVER AND TEAM MANAGER BRIEFING

PORSCHE

CARRERA CUP
NORTH AMERICA

SERIES CONTACTS

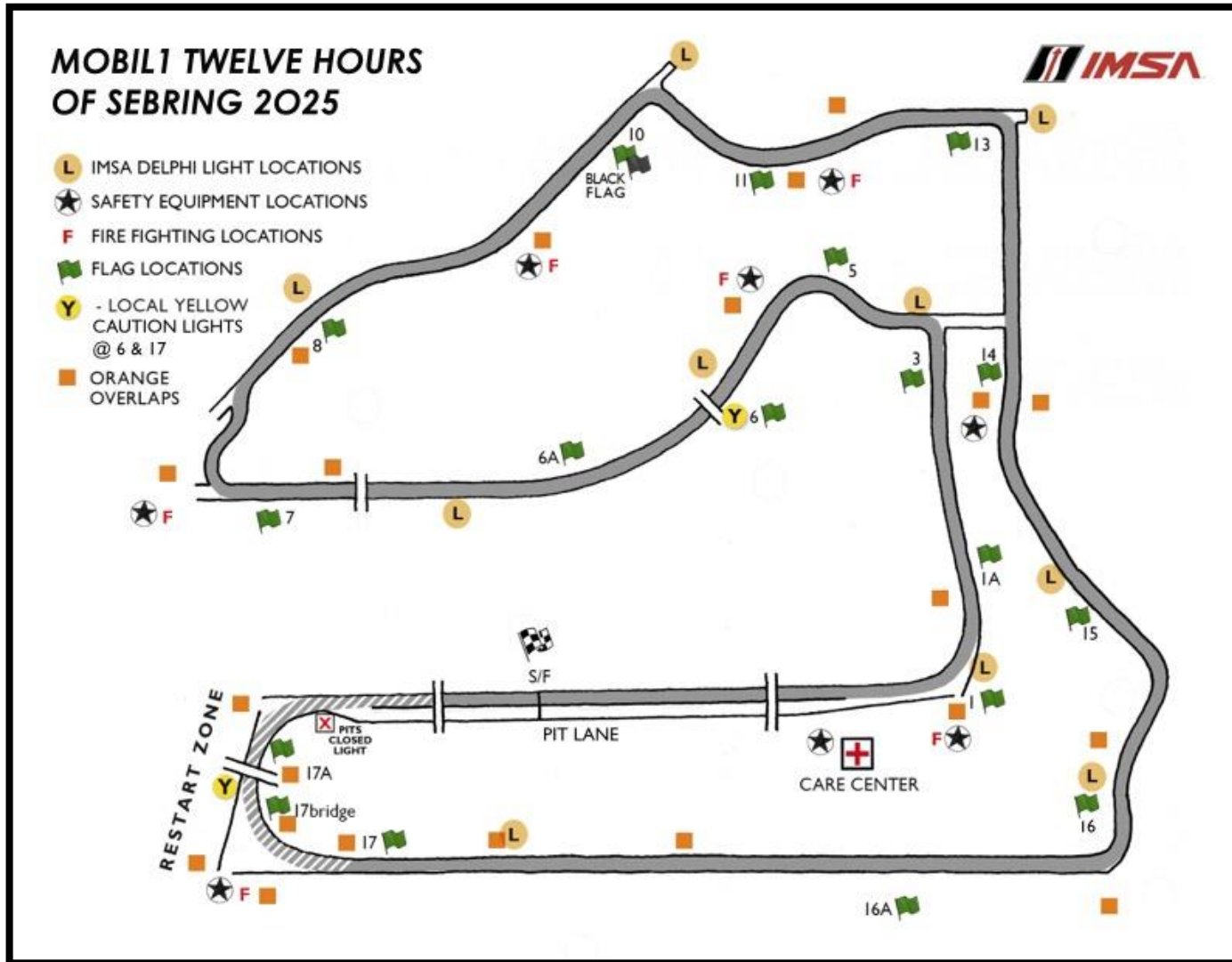
PORSCHE
CARRERA CUP
NORTH AMERICA

Christoph Von Liel	One Make Manager	(424) 482-6197
Ryan Anselmo	Series Manager	(424) 339-9432
Mario Brown	Technical Support	(470) 952-9509
Michael Yanase	Parts Support	(678) 938 1310
Jeremy Sundt	Race Series Specialist	(470) 419-9489
Justin Cornelison	Mar/Comms Specialist	(404) 716-2961



Casey Carden	Race Director	(770) 519-7190
Duane Sampson	Director, Single Make	(386) 285-7021
Austin Farr	Coordinator, Single Make	(386) 293-1702
Cory Posocco	Paddock Logistics	(386) 566 8313
Scott Ellison	Technical	(734) 621-9130
Johnny Knotts	Pit Lane Supervisor	(813) 763-4669
Gayle Burnham	Administration	(386) 235-7800
David Pees	Timing & Scoring	(386) 308-8866
Ryan McLean	Medical Liaison	(386) 285-6913
Roy Spielmann	Track Services	(414) 702-0905
Robert Bosworth	Safety & Security	(704) 728-8087

OFFICIAL TRACK MAP



PRE-RACE / POST-RACE

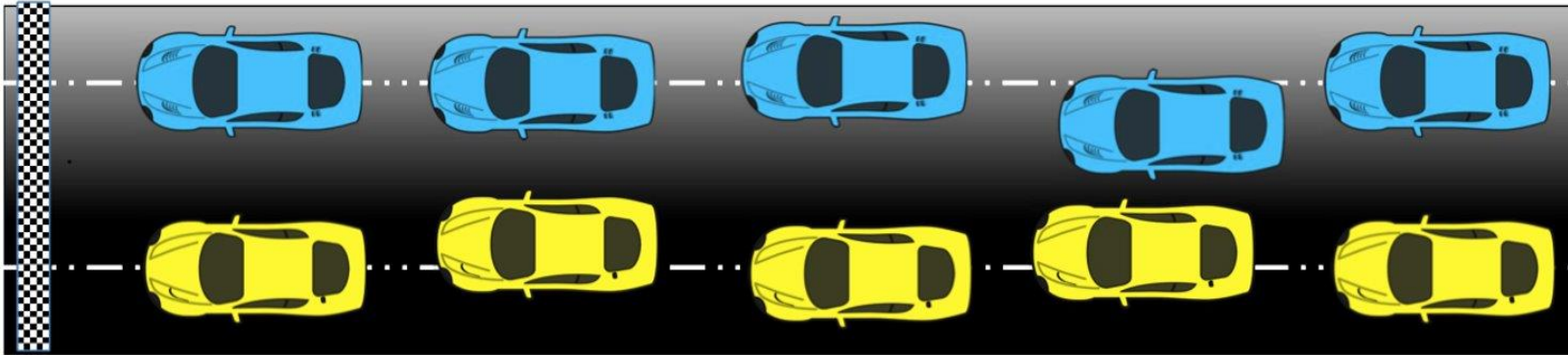
Refer to official schedule and MXM for final times and Instructions for races

RACE START

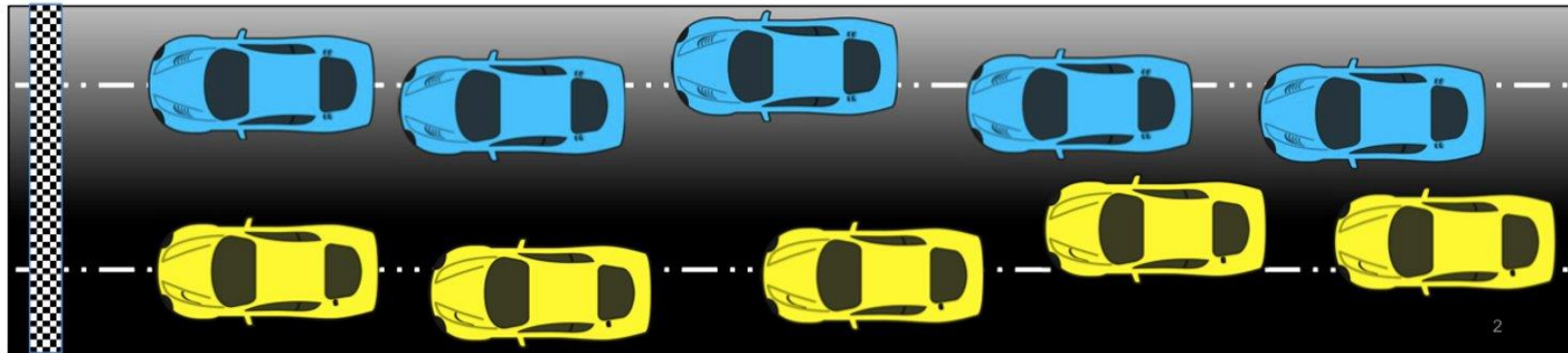
- **One (1) Formation Lap**
- **Safety Car enters track using full Pit Lane exit**
- **Pack up on the way to Turn 16 / Pair up exiting Turn 16 (no more tire scrubbing)**
- **Stay with Safety Car**
- **Safety Cars enter Pits**
- **Acceleration point**
 - **Polesitter to maintain pace of the Safety Car to acceleration point**
- **Column Passing and Lane Changes are prohibited prior to the start line**
- **Jump/False start Reviews**
 - Gaps
 - Timed/Early Acceleration
 - Out of Line
 - Column Passing
- **Official Race start is FIRST time by**

PROPER START

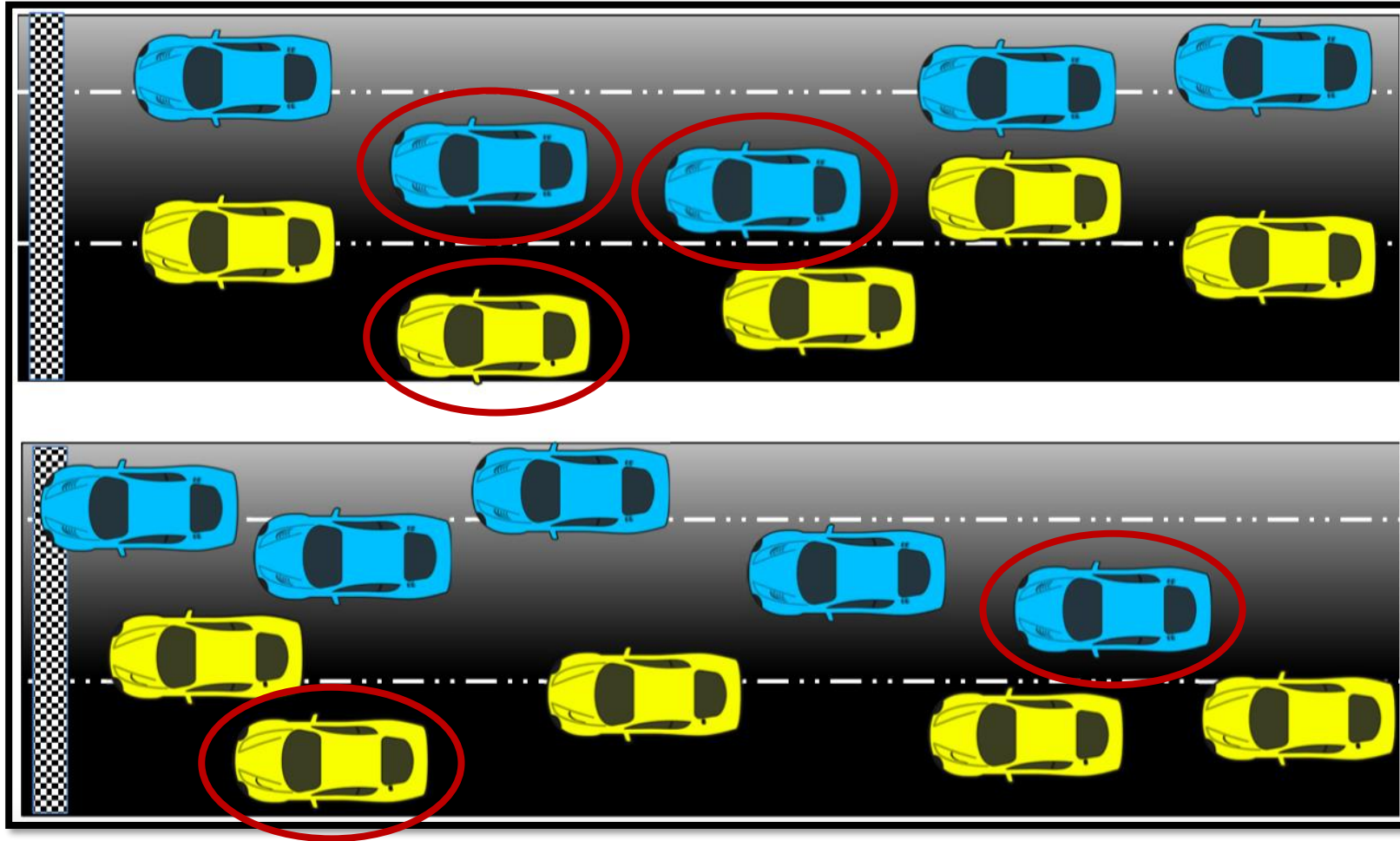
Good Overlaps:



Sloppy:



IMPROPER START- TO BE REVIEWED



ON-TRACK CONDUCT

LOCAL YELLOW FLAGS (SEE ARTICLE 27)

- No passing from point perpendicular to yellow flag to the point perpendicular to the following green flag

BLOCKING (SEE ARTICLE 30)

- Movement in reaction to the trailing Car
- Defending increases responsibility

CONTACT/INCIDENT RESPONSIBILITY (SEE ARTICLE 30)

- Review in Race Control
- Incidents under review announced by Race Control

COEXISTENCE

- Maintaining awareness lessens margin for error, regardless of responsibility

COMMUNICATE REVIEW REQUESTS TO PIT OFFICIALS

- Must provide time of day, location, and description of action to be reviewed

POST RACE VIDEO REVIEW WILL CONTINUE IN 2025

- Probation will continue to be used when appropriate

FULL COURSE YELLOW

Failure to maintain proper Safety Car speed and correct gaps between Cars, or otherwise initiate manipulative action to gap Cars, is prohibited and subject to penalty.

Race Control radio, in-car lights, double yellow flags displayed

Response vehicles may begin to move as soon as FCY is announced

Leader to Safety Car speed, all Cars pack up – respect the area of incident/Track Services personnel

- RC instructions regarding track condition over radio
- SC dispatched from Pit Exit

RESTART

- Maintain SC speed, let SC get away, *no more tire scrubbing after T16*

RESTART ACCELERATION ZONE – Entry to T17

- Passing on display of green flag

LOCAL YELLOW LIGHT AT TURN 17

- Used to signify a local yellow
- Solid Yellow Light
- Not part of the IMSA Yellow Light System



IMSA TRACK SERVICES

IMSA CHASE VEHICLES

- Chase 1
- Chase 2
- Chase 3
- Chase 4

ON-TRACK ASSISTANCE

- Communication with Track Services Medic
- Neutral and power shut off
- Follow direction of on-scene Track Services personnel
- Maintain a safe speed and distance when passing on-track incidents with Track Services team members present



Contact: Roy Spielmann (414) 702-0905

RESTART ACCELERATION ZONE

Restart acceleration zone is the entry to Turn 17.



WET TIRE CHANGE PROCESS

If Race is not started as declared 'Wet', the following process is used:

- Race Control announces FCY and deploys Safety Car to collect the field.
- The running order of the Cars is taken at S/F for all Cars.
- After all Cars have crossed S/F but before arriving at the pit entry, Race Control declares Red Flag.
- The Race Director declares the Race 'Wet'.
- The Safety Car leads the field into the pit lane.
- Cars are directed to their pit boxes for the exclusive purpose of changing to wet tires, no other work.
- Teams are given Five (5) minutes to change tires.
- Cars unable to continue must inform their Pit Official.
- The Pit Officials will call the order of the Cars as taken at S/F to release from their pit box one at a time and proceed on track behind the Safety Car.
- Changes to the running order in case of any misfortune after crossing S/F are restored for the restart.
- A 'confirmation lap' is performed to check the order of the Cars and to direct any necessary changes.
- The Race is resumed from FCY as normal.

ON-TRACK REVIEW

First Event of the Year

- Stay in line for the starts
- Race other competitors as you would like to be raced
- Friday race late in the day – Lights? NO RAIN LIGHTS

Sebring Specifics

- Turn 1 - start
- Turn 7 - passing
- Turn 13 – exit
- Turn 16 – passing?

POST-RACE VIDEO REVIEW

Race Control will announce any incident that will be reviewed post-race DURING the Race

- There will be no official review of any incident that was not officially announced
- Normal unofficial post-race review of incident video for learning purposes will continue
- It's imperative that all potential incidents get communicated to Race Control. If your driver has mentioned an incident and Race Control does not announce shortly that "it's under review," or a team has communicated to Pit Lane staff a complaint from their driver about possible contact and it has not been announced as "under review," then you need to ask again what the status of the inquiry is

Race Control will call any car whose video will be officially reviewed to impound after the race so that the video can be collected immediately after the race for review

Any post-race review that results in a penalty being applied will have that result applied in the Provisional results

PCCNA AUTOGRAPH SESSION

PCCNA DRIVER AUTOGRAPH SESSION

- Thursday, March 14
- 11:45am – 12:15pm
- Located at Craton merchandise tent (see map)
- Fan midway across from race control tower



UPCOMING PROMOTIONAL / FAN OPPORTUNITIES

WATKINS GLEN INTERNATIONAL

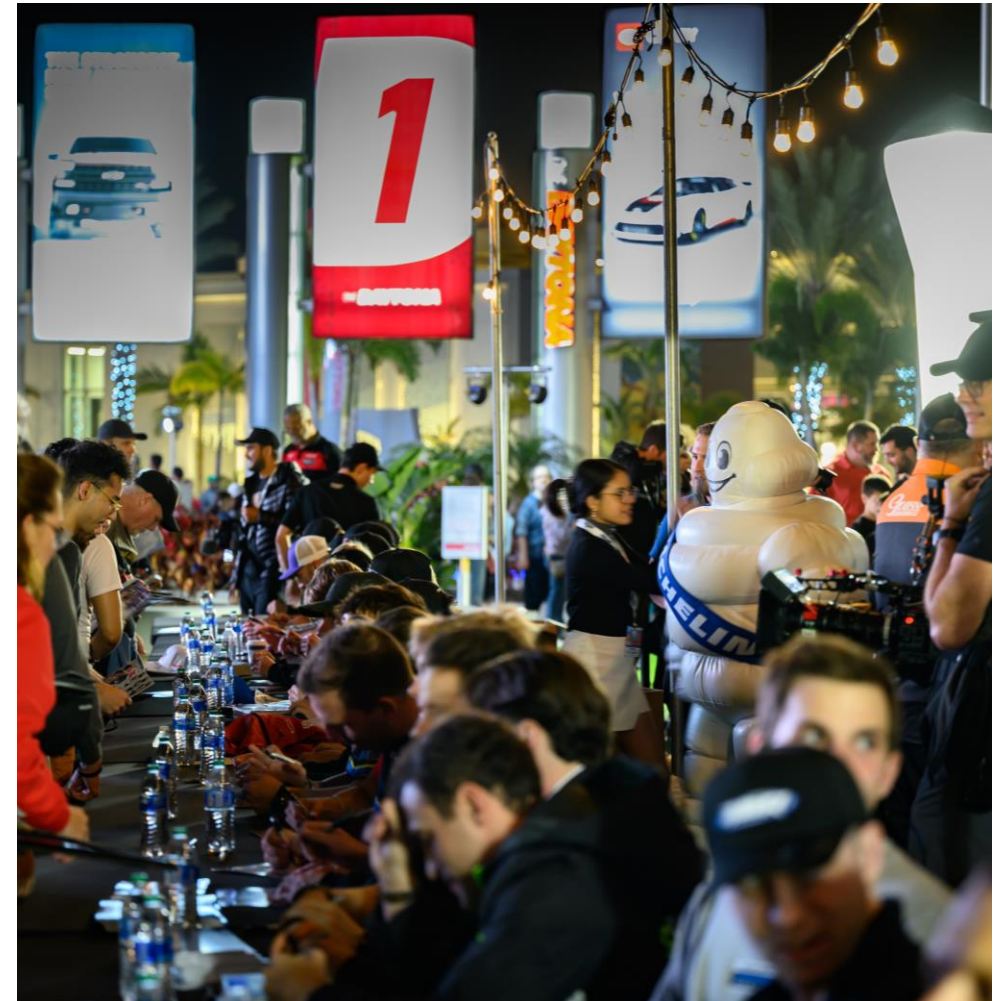
WEDNESDAY, JUNE 18 | IMSA PREVIEW PARTY AT THE YARD

INDIANAPOLIS MOTOR SPEEDWAY

THURSDAY, SEPTEMBER 18 | INDIANAPOLIS STREET FESTIVAL

MOTUL PETIT LE MANS

TUESDAY, OCTOBER 7 | KICKOFF PARTY SUWANEE TOWN CENTER



Interested in participating? Contact [Emily Nash](#) or [Lucas DeBella](#) for more details.

PORSCHE CARRERA CUP NORTH AMERICA

SEBRING

THANK YOU

PORSCHE

**CARRERA CUP
NORTH AMERICA**