

LAMBORGHINI SUPER TROFEO SEBRING

TEAM MANAGER MEETING



SQUADRA CORSE

SERIES CONTACTS



Eriks Skirmants	Series Manager	(571) 240-8193
Angelo Dinkov	Series Support	(571) 352-5570
Craig Jamison	Parts Support	(248) 943-7343
Andrew Bosscher	Engineering Support	(586) 709-8812
Rachel Crawford	Hospitality Coordinator	(248) 935-9609
Danny Van Dongen	Hankook Motorsports USA	(305) 809-0356

Todd Snyder	Race Director	(860) 248-9115
Duane Sampson	Director, Single Make	(386) 285-7021
Cory Posocco	Paddock Logistics	(386) 566 8313
Scott Ellison	Technical	(734) 621-9130
Johnny Knotts	Pit Lane Supervisor	(813) 763-4669
Carol Mueller	Administration	(386) 262-8932
David Pees	Timing & Scoring	(386) 308-8866
Ryan McLean	Medical Liaison	(386) 285-6913
Roy Spielmann	Track Services	(414) 702-0905
Robert Bosworth	Safety & Security	(704) 728-8087

IMSA RESOURCES

IMSA COMPETITOR LANDING PAGE:

<https://www.imsa.com/competitors/>

- Team Portal
- Event Information
- Rules & Regulations
- Marketing & Branding Page

IMSA NOTICE BOARD:

<http://results.imsa.com/>

- Driver & TM Briefings
- Entry Lists
- Minute by Minute
- Timing Results
- Penalties

WELCOME TO THE 2023 IMSA COMPETITION LANDING PAGE

FOR ALL IMSA COMPETITOR INFORMATION PLEASE CLICK THE HAMBURGER MENU AT THE TOP LEFT OF THIS PAGE.

The one-stop shop for everything you'll need to get your team on track.

[2023 Driver Portal](#)

[2023 Team Portal](#)

[2023 Season Test Event Information](#)

[Media Center](#)

[IMSA Marketing and Branding Resources](#)

[Race Results](#)

[Federal Checkmate Pass Benefits](#)

[Special Michelin Fleet Pricing for Commercial/Light Truck Tires and Services - For All IMSA Members - 8 Tires Minimum Purchase](#)

[Special Michelin Discount Program for Passenger Tires - For All IMSA Members](#)

[IMSA Proud Suppliers](#)

LATEST EVENT INFORMATION



Mobil 1 Twelve Hours Of Sebring

Mar 15 to Mar 18

Sebring, FL

Resources:

[Provisional Schedule & SR 1/18/23](#)

IMSA NOTICEBOARD

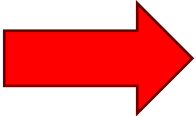
SEASON: 2023 | EVENT: Rolex 24 - Daytona International Speedway

ROLEX 24 - DAYTONA INTERNATIONAL SPEEDWAY, SEASON 2023

- OFFICIAL SCHEDULE - [V2](#)
- PIT BEEF ASSIGNMENT - [V2](#)
- TRACKING SECTOR MAP - [V2](#)
- TRACK MAP - [V2](#)
- DRIVER PHOTOS
 - IMPC DRIVER BRIEFING - [V2](#)
 - TWO DRIVER BRIEFING - [V2](#)
 - MX-5 DRIVER BRIEFING - [V2](#)
- CHANNEL LIST
 - ROLEX ON BOARD LIST - [V2](#)
- ENTRY LIST
 - IMPC PIR-RACE ENTRY LIST - [V2](#)
 - TWO PIR-ENTRY ENTRY LIST - [V2](#)
 - MX-5 PIR-RACE ENTRY LIST - [V2](#)

LST EVENT INFORMATION

The screenshot shows the IMSA website's navigation menu on the left, listing categories like COMPETITORS, HOME, EVENT INFORMATION, TEST EVENT INFORMATION, RULES & REGULATIONS, MARKETING & BRANDING, FORM & APPLICATIONS, IMSA, and PROUD SUPPLIERS. The main content area features a banner for the 2025 Sebring event (March 12-15) and a list of competitor resources including IMSA WeatherTech Sportscar Championship, IMSA Michelin Pilot Challenge, IMSA VP Racing Sportscar Challenge, Ferrari Challenge, Lamborghini Super Trofeo, Mustang Challenge, Mazda MX-5 Cup, and Porsche Carrera Cup. Below this is a section for 2025 Events, highlighting the Sebring International Raceway event from Mar 12 to Mar 14 in Sebring, FL, with links for download and provisional schedule.



2025 COMPETITOR RESOURCES

2025 EVENTS



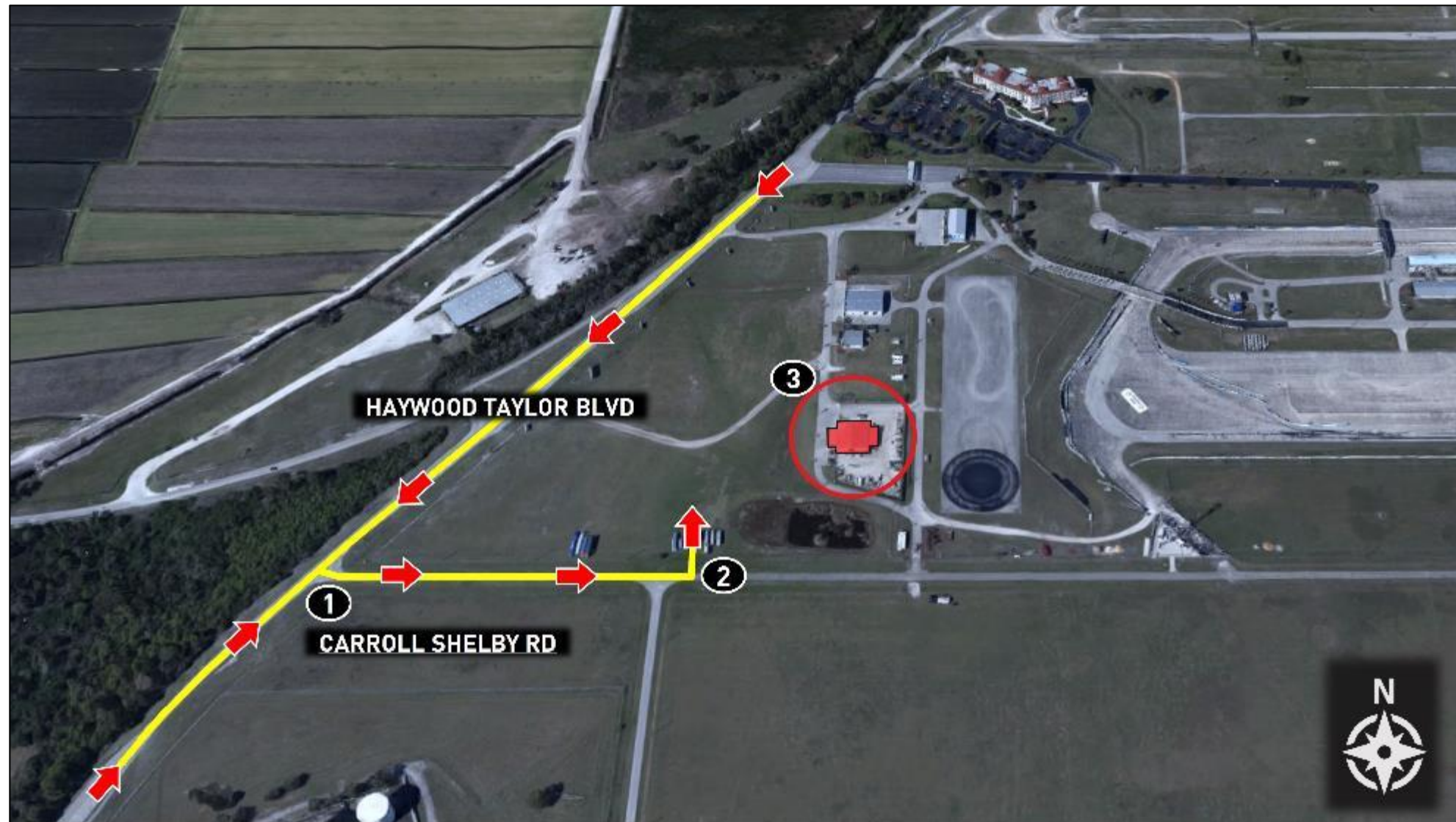
Sebring International Raceway
Mar 12 to Mar 15
Sebring, FL
Download:
[Provisional Schedule & SR 1/8/25](#)
[Track Map](#)

Directions

1. Take Haywood Taylor Blvd to Carroll Shelby Rd
2. Take first left to access road leading to IMSA Registration parking area
3. Follow signage to IMSA Registration (red shaded area)

Notes

- Address: 150 Earwood Blvd, Sebring, FL 33876
- Registration hours are included in the Official IMSA SR/Schedule



EVENT INFORMATION

PARKING PROCEDURES:

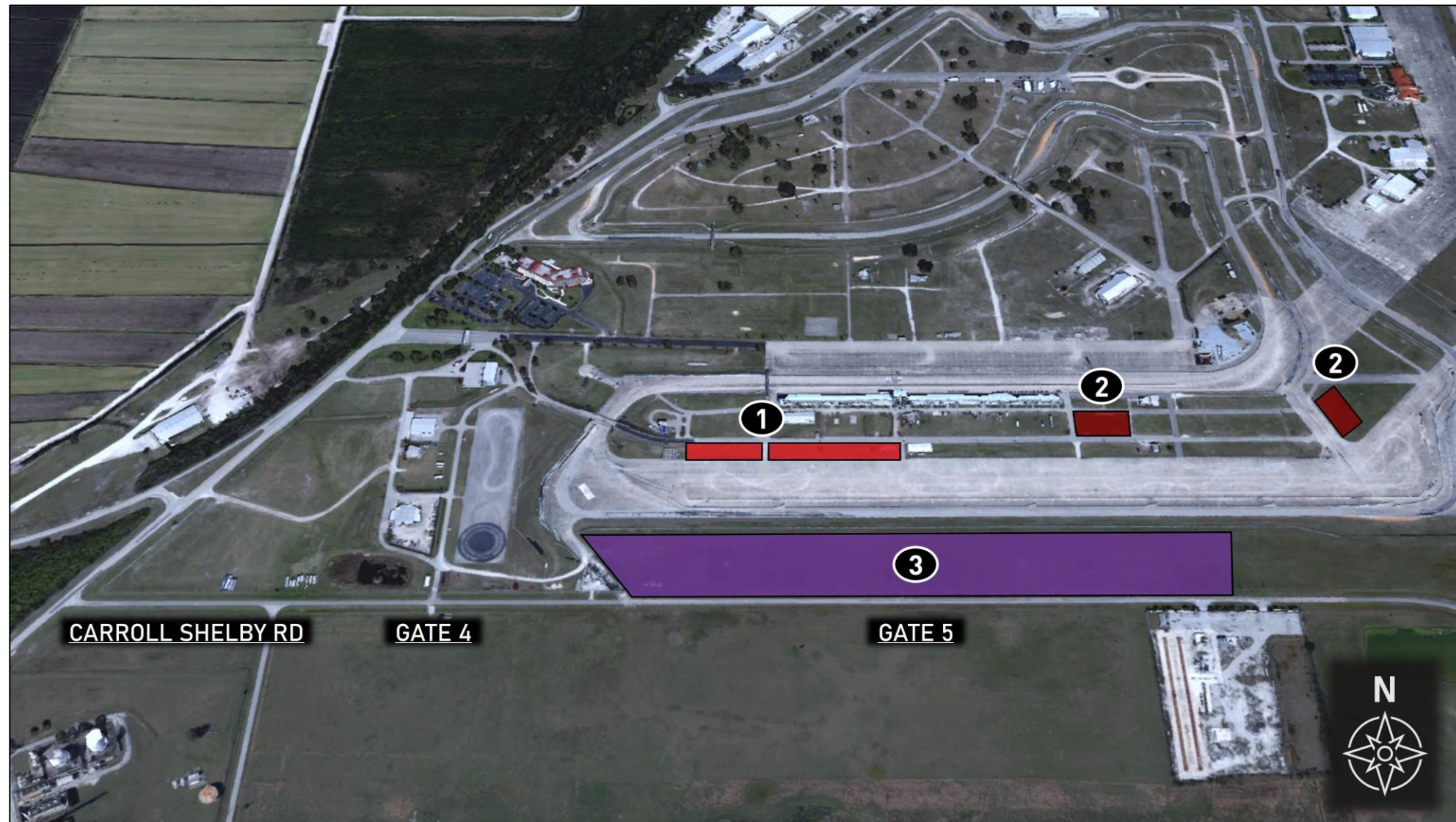
- **LST** Entries each receive **one (1)** infield parking pass valid from Tuesday through Friday and are available for pickup Tuesday from the administrator at IMSA Registration
- From Tuesday, March 11, parking restrictions are in force and infield parking passes go into effect
- This lot has a cold-track pedestrian crossover directly to the Paddock, available whenever Cars are not on track, and shuttles/trams go from the lot to the Competitor Paddock per the schedule listed on the event SR
- At all other times Trams go to a transfer hub located on the Skid Pad where individuals transfer to a tram to the Competitor Paddock
- Individuals with a 2025 Annual Credential, a single event credential (SEC), or a 2025 Annual parking pass are permitted to park in the Ulmann / IMSA Competitor Lot without an additional parking pass
- Any passes not picked up Tue. will be available at IMSA Registration (Gate 3) Wednesday morning
- **LST** passes valid **Tuesday – Friday**

» TEAM PARKING LOCATIONS



Locations

1. Red Star Team Parking (IWSC)
 - Red Star parking pass required for entry
 - Valid from Wed, Mar 12 – Sat, Mar 15
 - Valid Tues, Mar 11 – Sat, Mar 15
2. Red Circle Team Parking (IMPC + Single Makes)
 - Red Circle parking pass required for entry
 - Valid from Wed, Mar 12 – Sat, Mar 15
 - Valid Tues, Mar 11 – Fri, Mar 14
3. Ulmann Team Parking
 - Access via Gate 5
 - IMSA hangtags or credentials required for entry
 - Valid from Mon, Mar 10 – Sat, Mar 15
 - Tram service available to Paddock. Cold Track Crossover open starting Mon, Mar 10 (dependent on track schedule)



» TO ULMANN TEAM PARKING



Directions

1. Take Haywood Taylor Blvd to Carroll Shelby Rd
2. Turn left off Carroll Shelby Rd entering track via Gate 5
3. Park in designated Ulmann parking area

Notes

- Valid from Wed, Mar 13 - Sat, Mar 16
- Tram service available from Ulmann to Paddock
- IMSA annual hangtags, credentials, or purple stickers required for entry



EVENT INFORMATION

GOLF CARTS

- **LST Teams are permitted one (1) support vehicles (golf carts) in the paddock area per entered car.**
- Access stickers available from Challenge / Single Make Series Transporter.

PIT VEHICLES

- **LST Teams are permitted one (1) support vehicles (golf carts) in the pit lane area per entry.**
- **Access stickers available from the Challenge / Single Make Series Transporter.**

In addition to IMSA issued passes, SIR waivers and passes required for all golf carts/tuggers operating in the facility can be picked up from the Challenge / Single Make Series Transporter.



PADDOCK

**PROHIBITED:
ANY ONE, TWO OR
THREE-WHEEL FORM OF
TRANSPORTATION**

**ONLY PROPERLY
PERMITTED VEHICLES ACCEPTED
EXCEPTIONS FOR VESTED MEDIA
AND ADA TRANSPORT**

Motorcycles, drones, bicycles, skateboards, rollerblades and other non-motorized transportation, as well as motor scooters of one, two or three-wheels and/or designed to transport one or two persons, are prohibited in the garage, pit and/or Paddock areas except authorized power-driven mobility devices (ADA requirements - Americans with Disabilities Act), and accredited and vested media personnel.

Pit vehicles must only be operated by an IMSA credential holder. Motorized carts and similar 3- or 4-wheeled conveyances must not be driven into pit lane except pit equipment approved for a Series or as specified in the SR.

Such use in the Paddock must be for legitimate purposes only.

Excessive speed and/or unsafe operation is prohibited. Participants must abide by state laws and Promoter restrictions regarding licensing, maximum speed, helmet requirement and use.

Such conveyances may be prohibited at certain Events or in certain areas of each facility by local ordinance or Promoter limitation.

IMSA SEVERE WEATHER PLAN

- IMSA continues to use DTN Weather Service with Lightning Detection.
- Notifications will be sent the same as past years:
 - Within 30 miles of the track – an advisory message will be sent for informational purposes.
 - Within 20 miles of the track – a cautionary message will be sent to increase awareness and trigger protective actions for personnel and equipment, as needed.
 - Within 8 miles of the track – a full-stop message will be sent to notify personnel to stop all activities and seek shelter due to potentially dangerous conditions.
 - IMSA will continue to send periodic updates through the messaging service anytime on-track activities are under a “full-stop” warning.
 - When severe weather has moved out of the area, an “all-clear” message will be transmitted.

This year, IMSA will be using an internal messaging service. The advantages for this service are: (1) text messages sent to all credentialed attendees for event and (2) there is no longer a need to provide a recipient list.

ACCESSING EMERGENCY SERVICES

- For emergency responders' assistance (24 hours per day), dial 911. Any 911 call that originates on Track Property will be "captured" by Highlands County 911 for quicker response.
- Non-emergency number for In-field Care Center is (863) 655-7735.
- Sebring Point of Contact with Aloha EMS is Billy Kingston (863) 214-7800.

PIT LANE LOGISTICS

- All pit boxes are 21 feet.

PIT LANE SUPPORT:

- Located at IMSA Timing Stand on Start/Finish or IMSATIMING@IMSA.COM

PIT LANE SHARING:

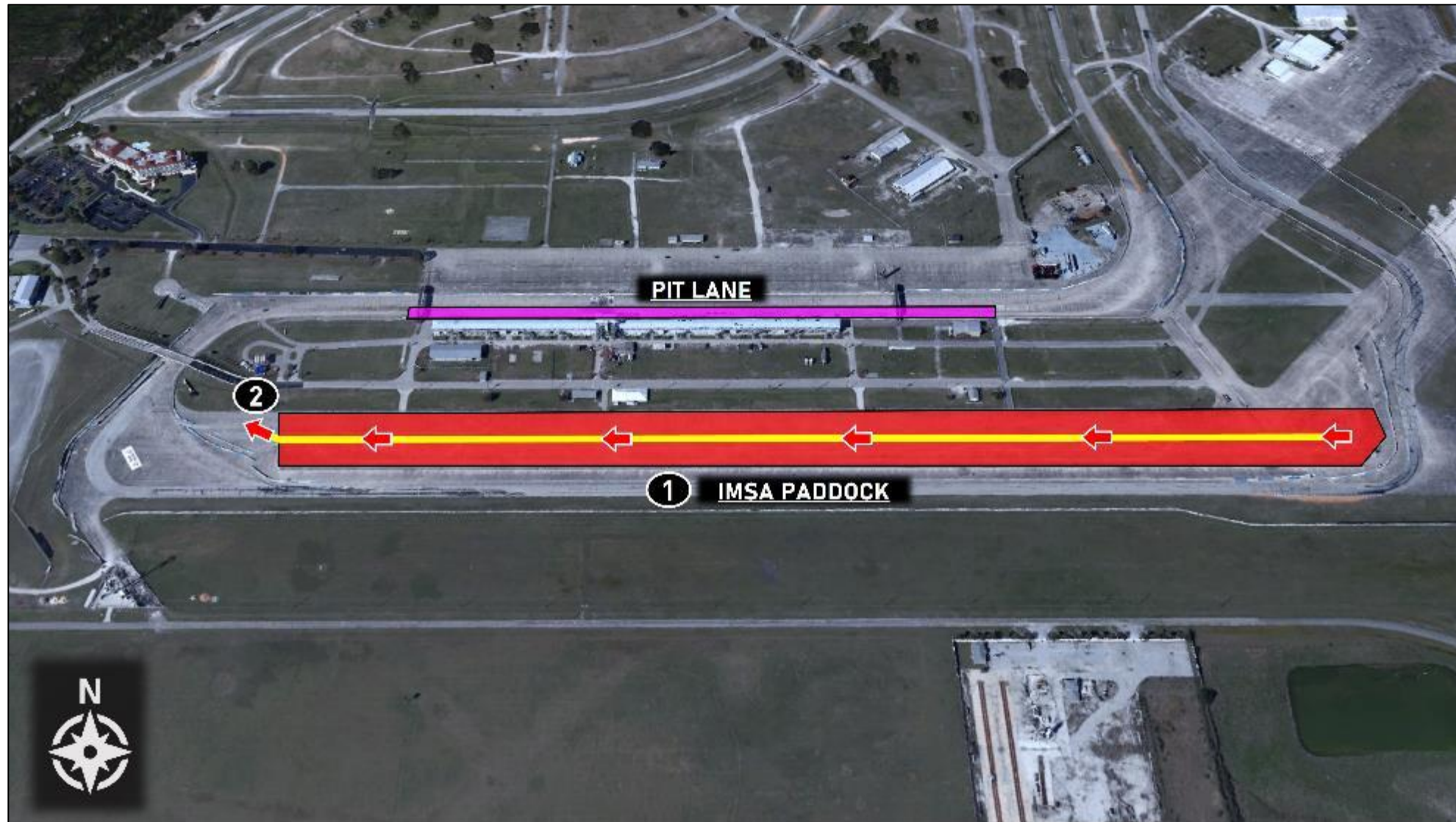
- If a LST team would like to partner with a IWSC team, please send request to dsampson@imsa.com

Directions

1. Exit team space (awning) and proceed west, towards Turn 17
2. Enter false grid

Notes

- Use caution and follow traffic patterns

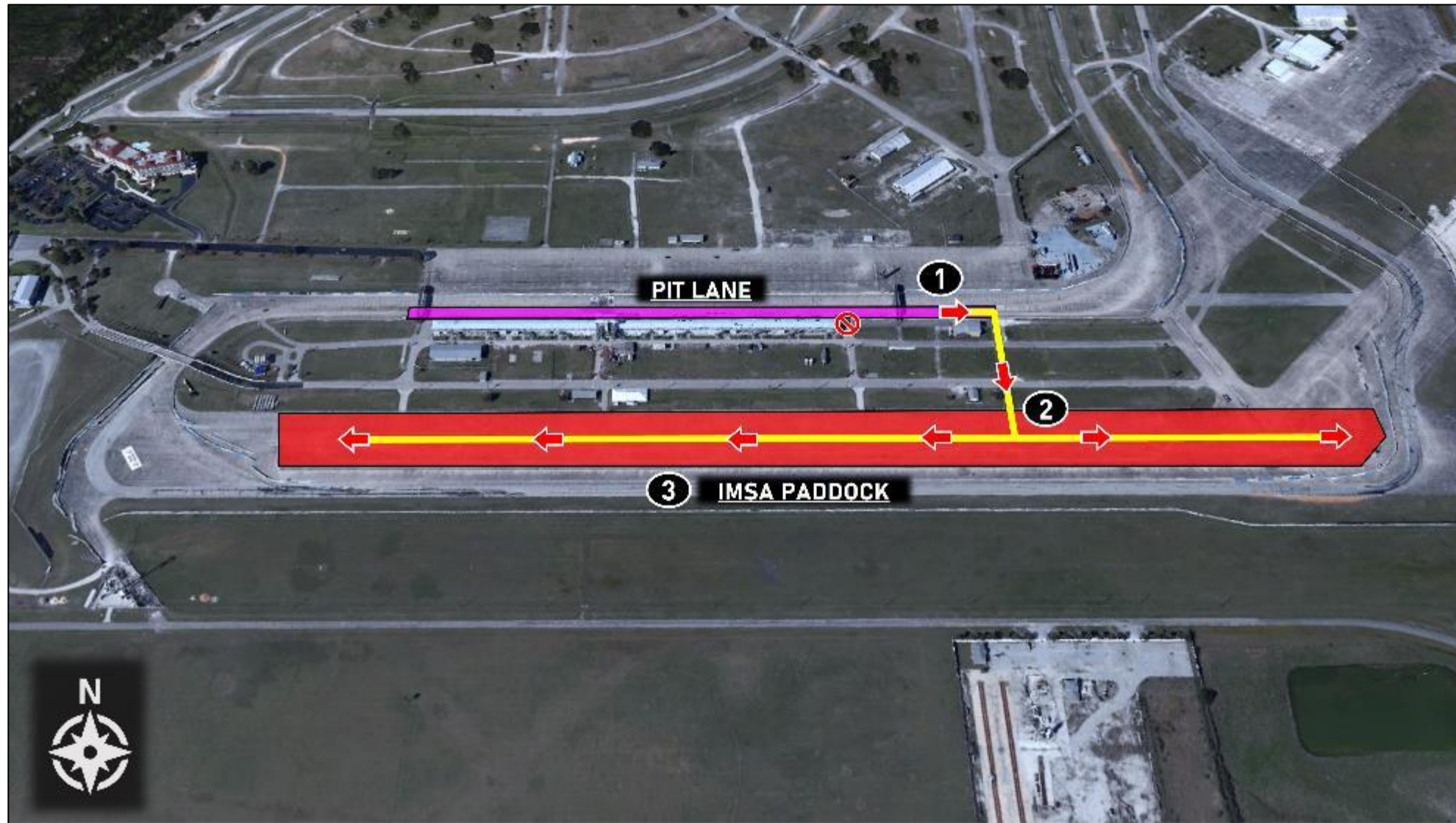


Directions

1. Exit Pit Lane at Care Center and proceed straight into IMSA paddock
2. Keep right in paddock
3. Proceed to team space

Notes

- Use caution and follow traffic patterns
- Pit Lane exit at end of Pit Structure will not be used

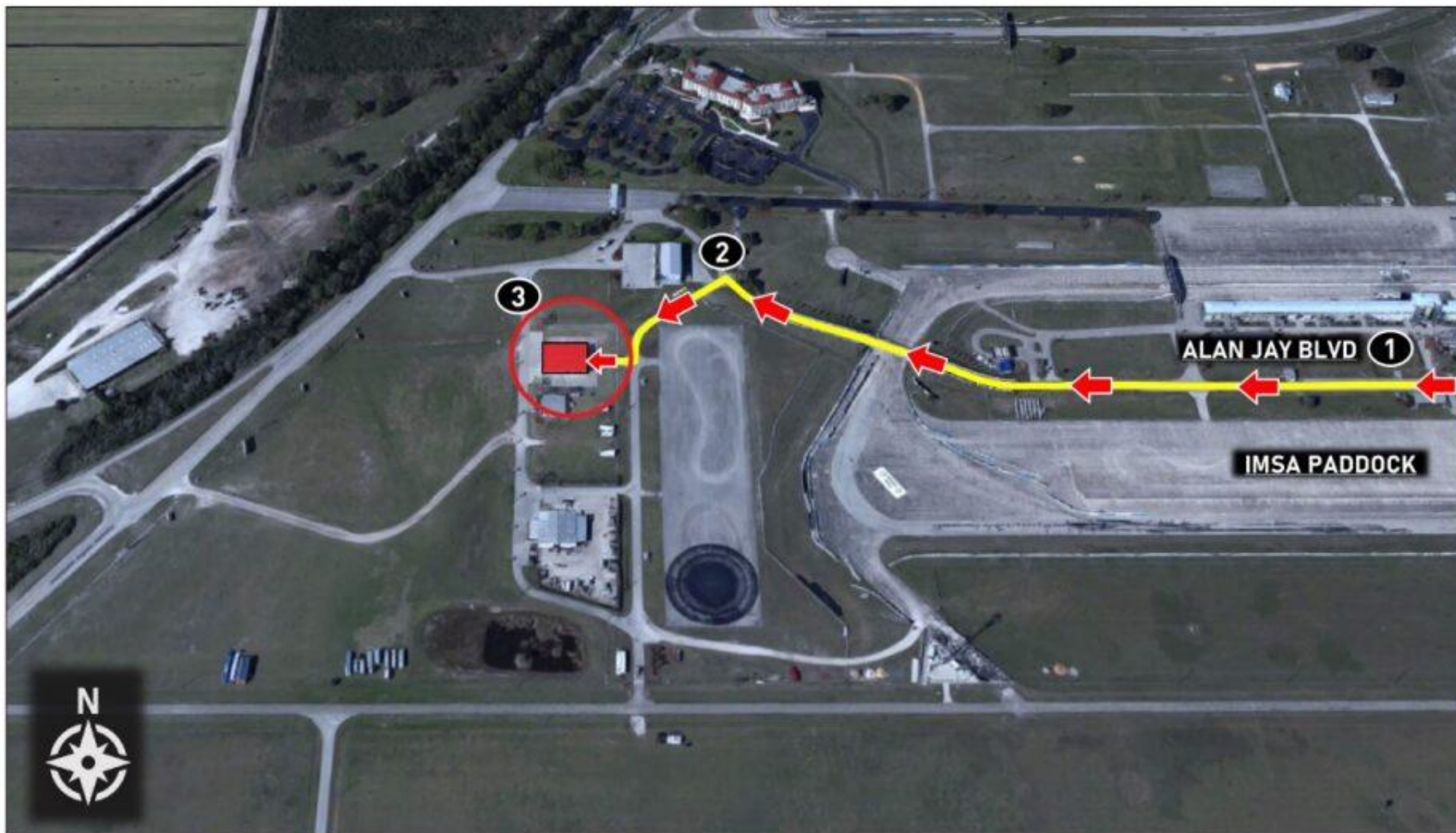


Directions

1. Exit paddocks to Alan Jay Blvd and cross bridge
2. Turn left at Sebring office building and proceed adjacent to skid pad
3. Team/Driver Briefings will be inside the Ariens Demonstration Center

Notes

- Briefing times are included in the Official IMSA SR/Schedule
- Proper credentials required for paddock/infield re-entry



IMSA TRACK SERVICES

IMSA CHASE VEHICLES

- Chase 1
- Chase 2
- Chase 3
- Chase 4

ON-TRACK ASSISTANCE

- Communication with Track Services Medic
- Neutral and power shut off
- Follow direction of on-scene Track Services personnel
- Maintain a safe speed and distance when passing on-track incidents with Track Services team members present



Contact: Roy Spielmann (414) 702-0905

» CARE CENTER LOCATION



Notes

- Care Center located adjacent to Pit Lane on Eastern end, closest to Pit Out
- Care Center Hours
 - + Wed 3/13, 8:00 A - 6:00 P
 - + Thr 3/14, 7:30 A - 10:00 P
 - + Fri 3/15, 8:00 A - 9:00 P
 - + Sat 3/16, 7:00 A - 11:00 P



SPORTING REGULATIONS REMINDER

16.1 PRIVATE IN-CAR-CAMERAS (ICC)

- May be permitted **only after** the express approval of IMSA, and any footage gathered from such private ICC shall **only** be for internal use by Team and Driver
- ICC installation (locations/primary & secondary retention systems, etc.) must be approved by Paul Walter, pwalter@imsa.com
- Private ICC installation on Driver helmet prohibited (except if meeting FIA Homologation criteria for helmets listed in Art. 21.)
[This is a specific helmet camera from a specific approved vendor only]
- Live streaming/posting of any recorded material is prohibited
- Any use of the private ICC footage by sponsors or any other third party is prohibited

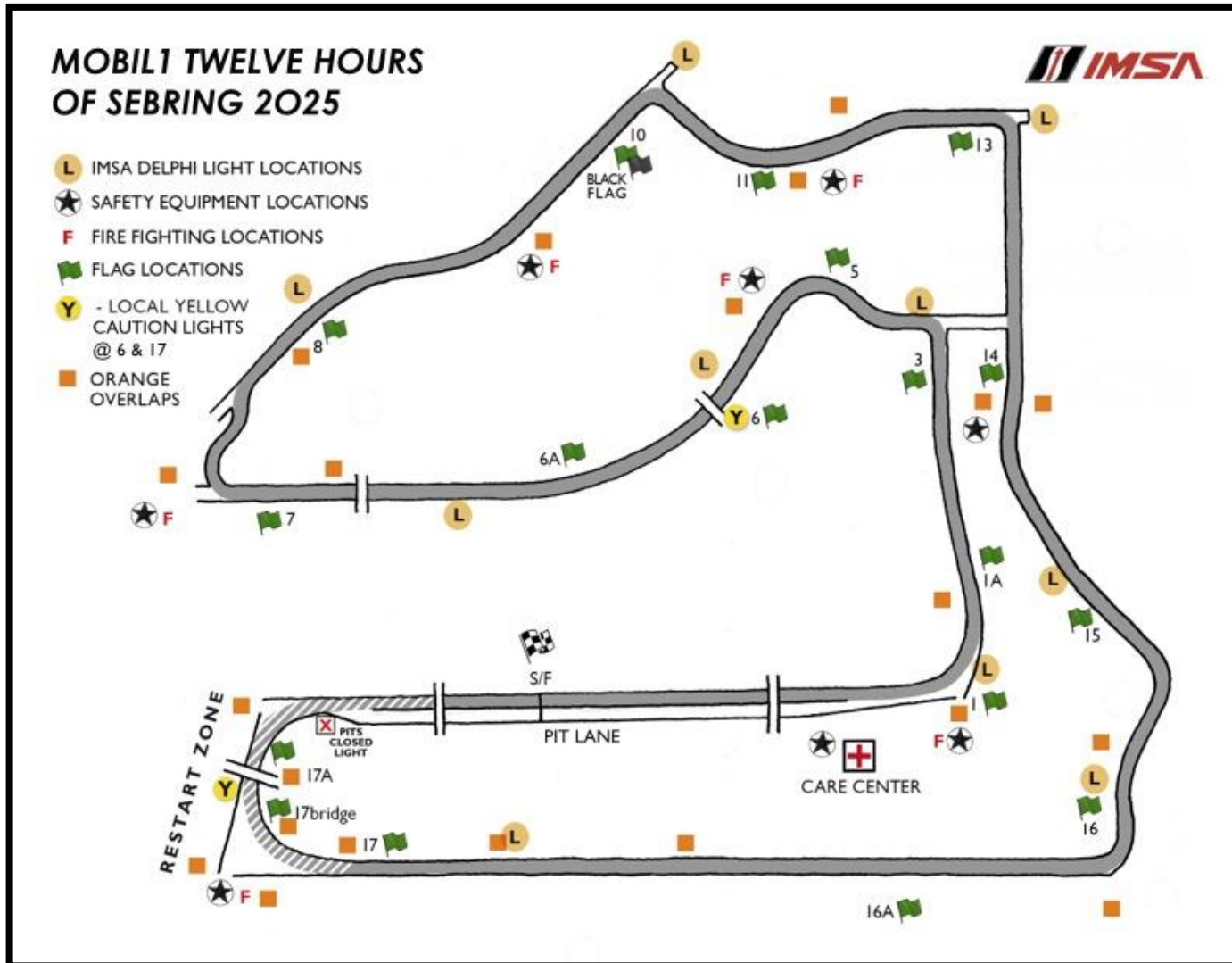
FIRST VIOLATION

- \$5,000 Entrant Fine, loss of ten (10) Team championship points and ten (10) Driver championship points per Driver in Car
 - Immediate removal of any prohibited media from visibility
- **Second and subsequent violation(s)** - \$5,000 Entrant Fine, loss of thirty (30) Team championship points and thirty (30) Driver championship points per Driver in Car
 - Immediate removal of any prohibited media from visibility

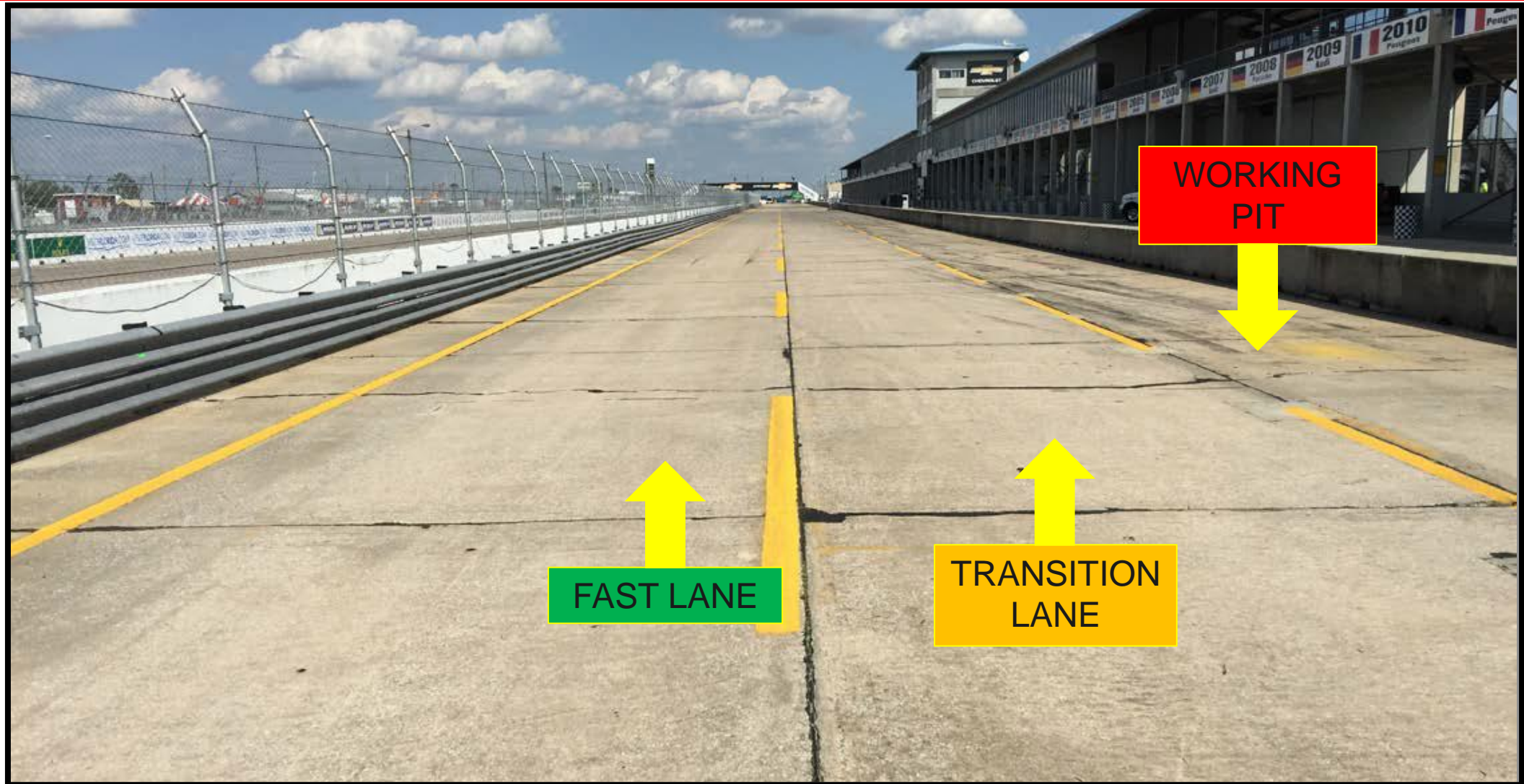
DRIVER HELMET AND FHR INSPECTIONS

- Per 2025 IMSA Sporting Regulations Article 21.2, all Driver helmets must be inspected by IMSA prior to first use in the season.
- Helmets and HANS devices must be presented at IMSA WeatherTech Trailer for annual inspection.
- Helmets must display the required IMSA inspection sticker.
- The 2025 Helmet sticker indicates the helmet is compliant with the FIA 8860 standard and is equipped with the Eject System or Stand 21 “Lid Lifter” system.
- The helmet inspection does not address the safety condition of the helmet.
- IMSA Officials will also inspect the Drivers’ Frontal Head Restraint (FHR). Please ensure the HANS tether is within the five (5) years mandated by FIA.
- Will be monitored on the false grid and Drivers must have helmets inspected prior to qualifying.

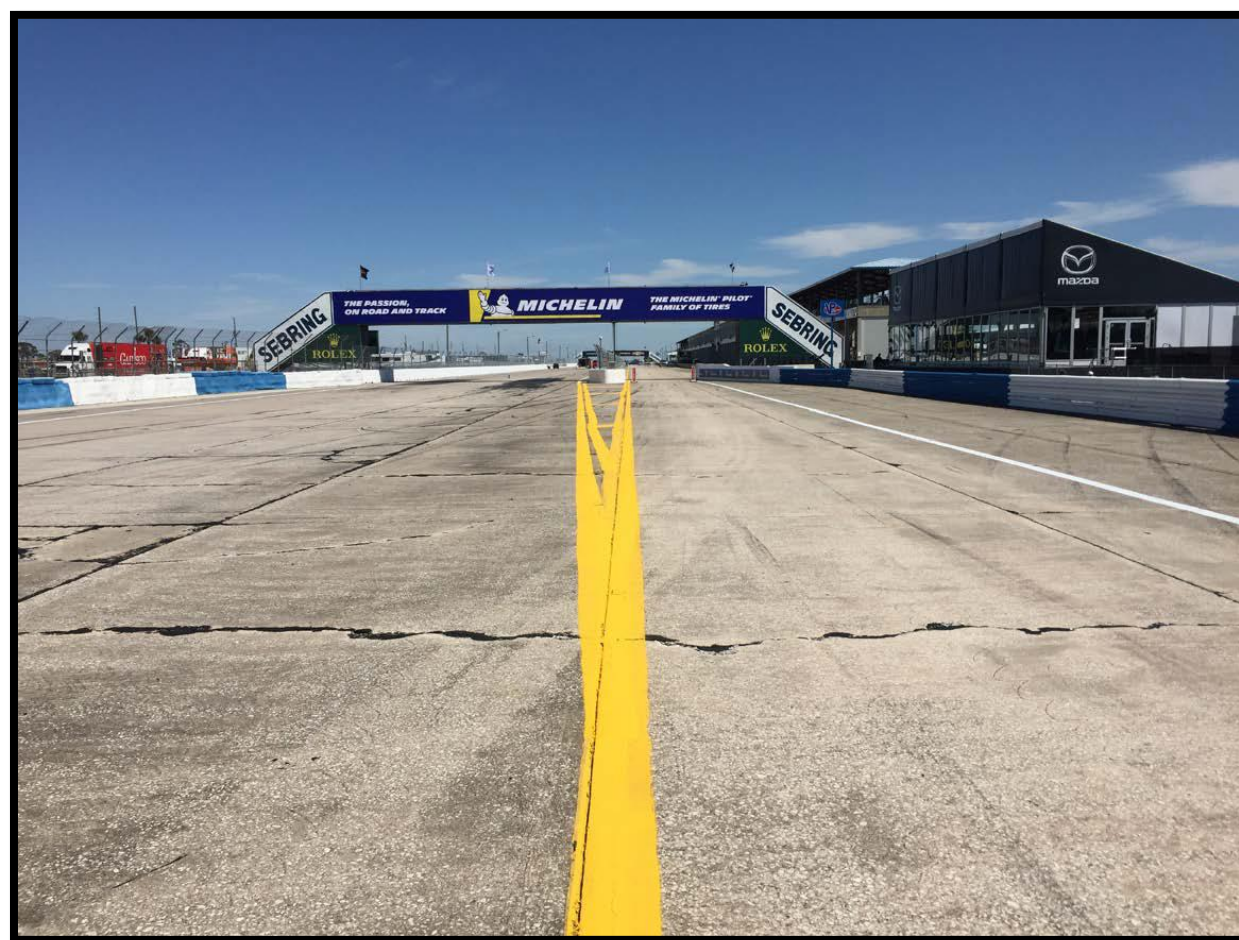
OFFICIAL TRACK MAP



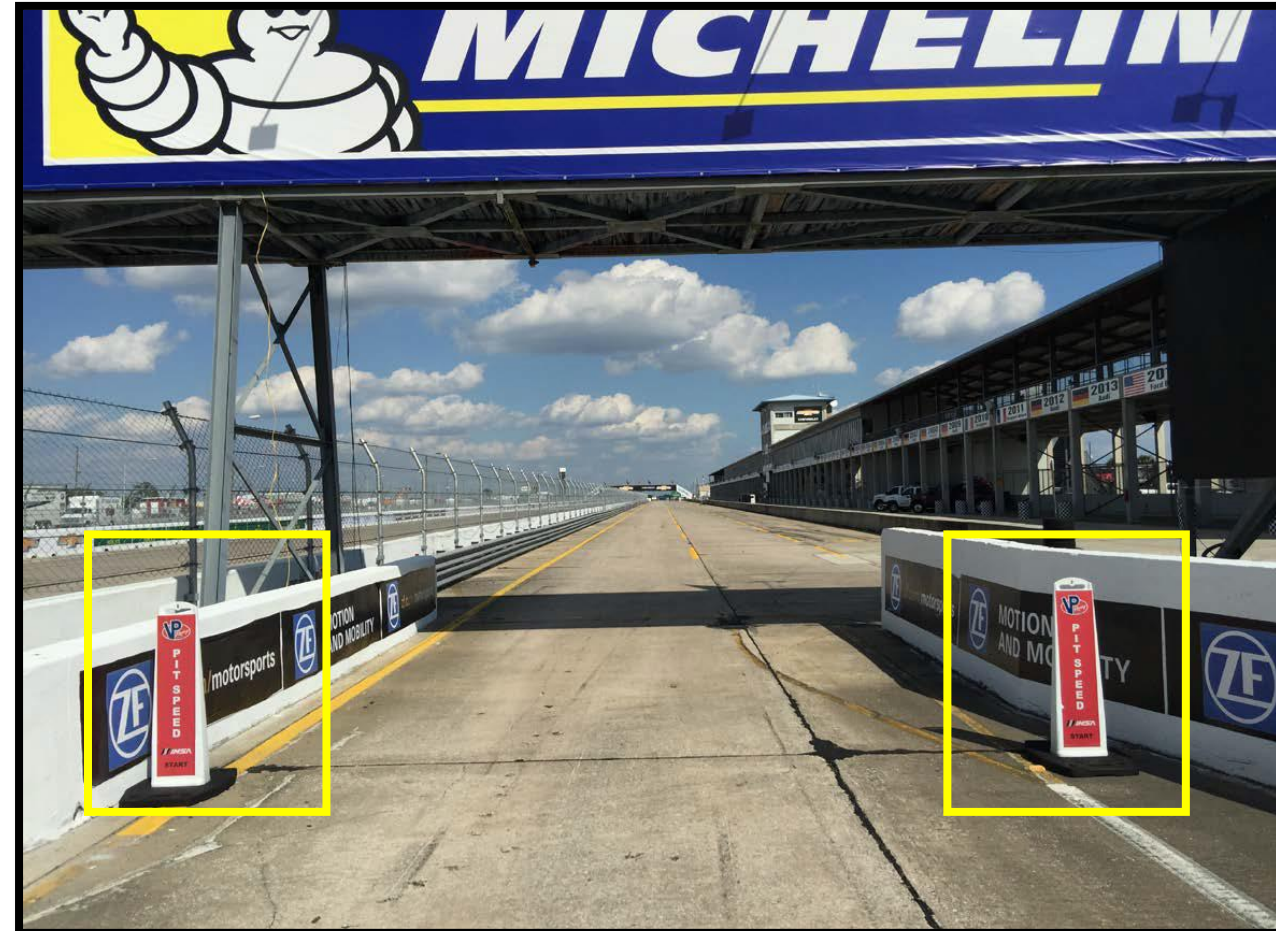
PIT LANE PROTOCOL



PIT LANE ENTRY/ SPEED LIMIT



Pit Lane Entry



Pit Lane speed limit begins at red pylons(60 kph)

PIT CLOSED REPEATER LIGHT

- POSITIONED ON PIT WALL FOR TEAM MANAGERS



PIT EXIT/ PENALTY BOX / PIT CLOSED LIGHT



PIT EXIT MERGE

- CARS EXITING THE PIT LANE MUST REMAIN TWO WHEELS TO THE RIGHT OF THE YELLOW MERGE LINE UNTIL IT ENDS
- MERGE SAFELY INTO TURN 1
- RESPECT THE SPEED DIFFERENCE OF THOSE ALREADY ON TRACK



ORANGE OVERLAPS

- OVERLAPS ARE LOCATIONS TO REMOVE DISABLED CARS FROM THE TRACK.
- OVERLAPS ARE MARKED THROUGHOUT THE CIRCUIT AND INDICATED ON THE OFFICIAL TRACK MAP.
- COMPETITORS WITH DISABLED CARS ON TRACK ARE REQUESTED TO USE THE OVERLAPS WHENEVER UNABLE TO CONTINUE TO THE PITS.



ORANGE OVERLAPS



ORANGE OVERLAP AND RUNOFF



LOCAL YELLOW LIGHT AT TURN 17

- USED TO SIGNIFY A LOCAL YELLOW
- SOLID YELLOW LIGHT
- NOT PART OF THE IMSA YELLOW LIGHT SYSTEM



PIT STOP INFO

Minimum time pit in loop to pit out loop

- Two drivers = 93 Seconds
- Solo driver = 96 Seconds

Pit distance: 21,312 Inches

Driver must change Driver ID plug before leaving pit exit or it will not register. Driver/car **may** receive a drive through to rectify late Driver ID plug changes.

Driving slower than 60kph in the fast lane may be penalized. Transition lane should be used if less than 60kph to not interfere with Cars in the fast lane.

UPCOMING PROMOTIONAL / FAN OPPORTUNITIES

WEATHERTECH RACEWAY LAGUNA SECA

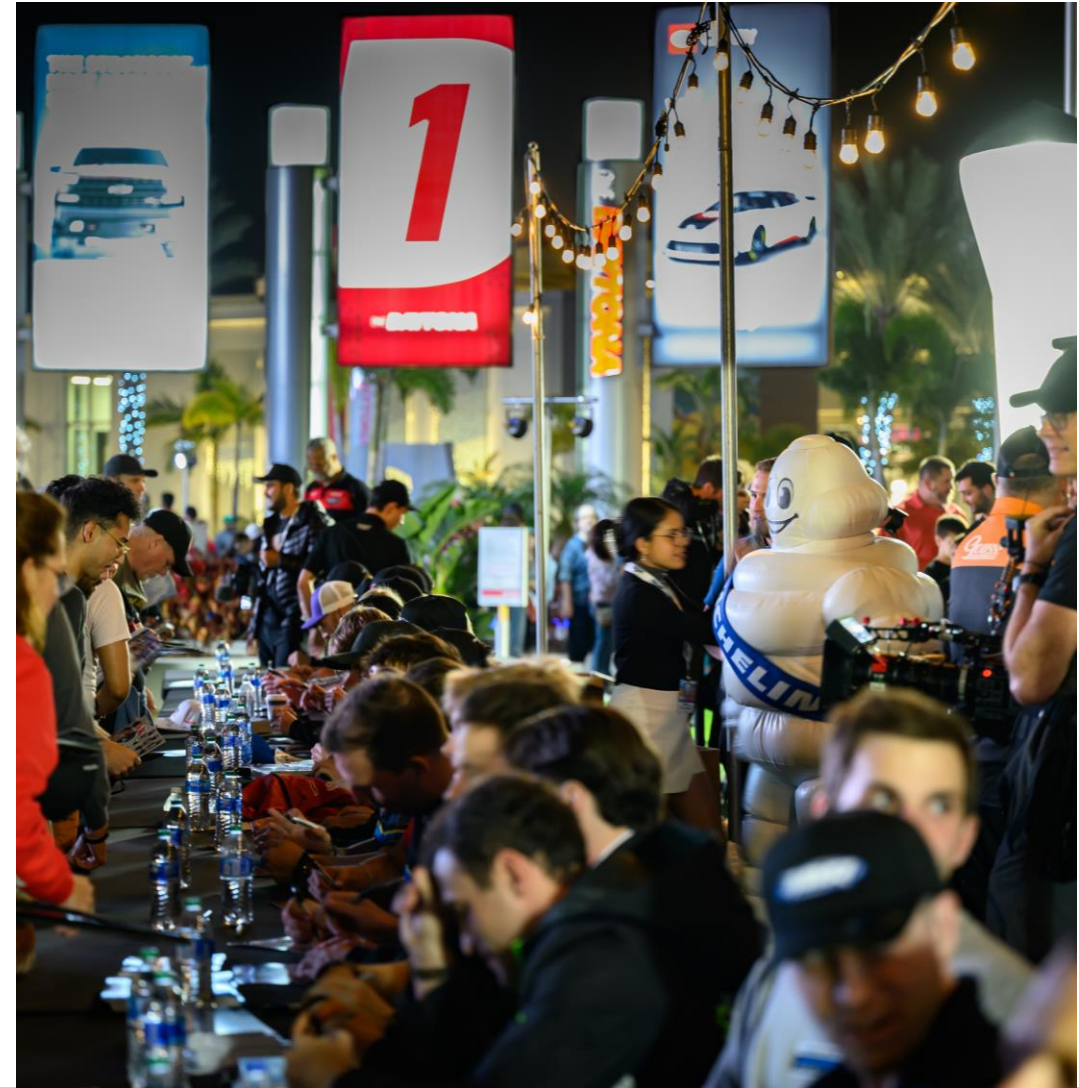
WEDNESDAY, MAY 7 | IMSA STREET PARTY DOWNTOWN SALINAS

WATKINS GLEN INTERNATIONAL

WEDNESDAY, JUNE 18 | IMSA PREVIEW PARTY AT THE YARD

INDIANAPOLIS MOTOR SPEEDWAY

THURSDAY, SEPTEMBER 18 | INDIANAPOLIS STREET FESTIVAL



Interested in participating? Contact [Emily Nash](#) or [Lucas DeBella](#) for more details.

Thank You!

New Driver (Sebring/IMSA) is Tuesday
at 3:15pm

Race Briefing is Thursday at 2:00pm



SQUADRA CORSE

RACE BRIEFING



SQUADRA CORSE

PRE-RACE

REFER TO MxM

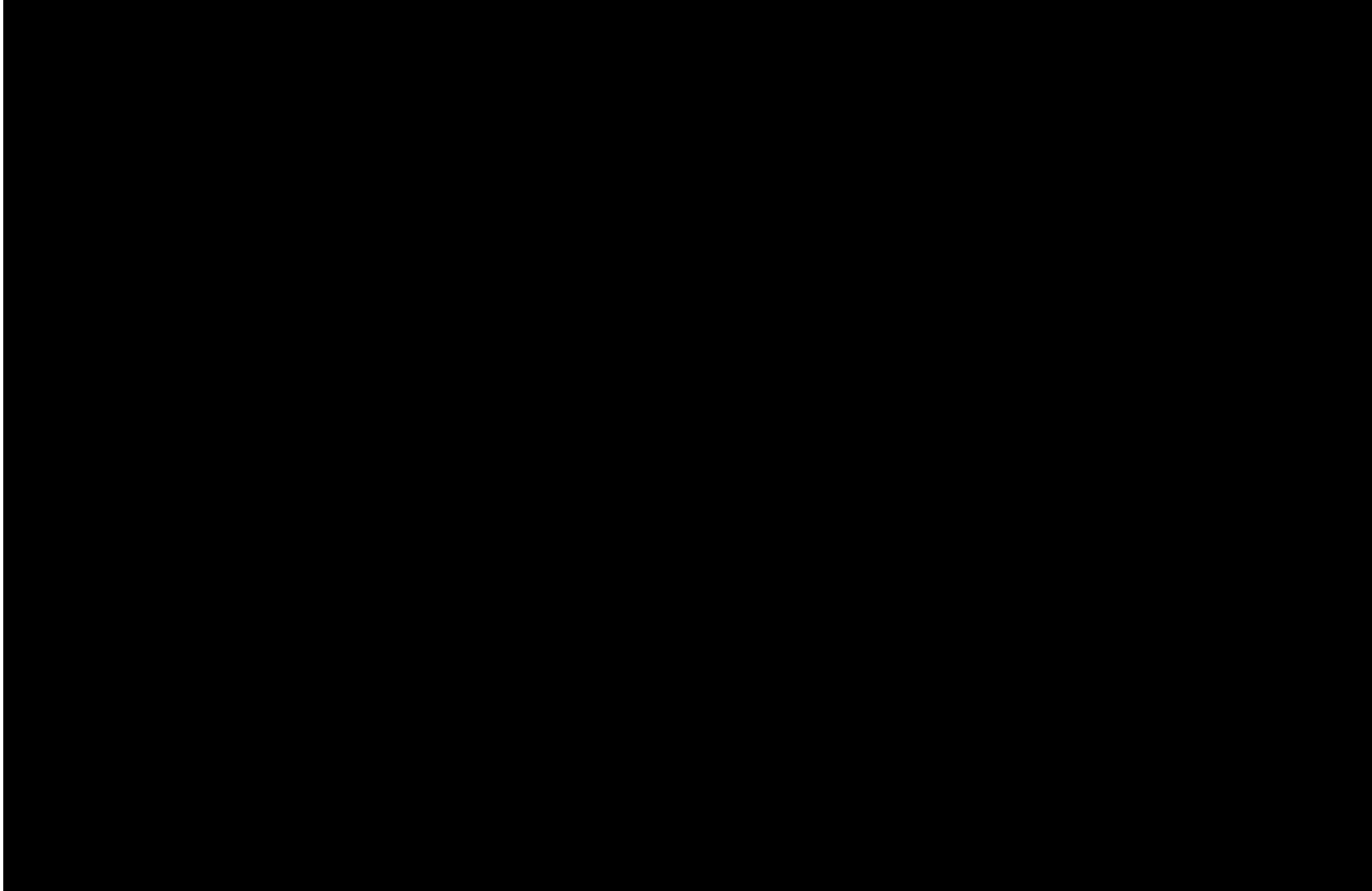
RACE START

- **One (1) Formation Lap**
- **Safety Car enters track using full Pit Lane exit**
- **Pack up Turn 13 to Turn 16 / Pair up Turn 16 to Turn 17 (no more tire scrubbing)**
- **Stay with Safety Car**
- **Safety Cars enter Pits**
- **Acceleration point**
 - **Polesitter to maintain pace of the Safety Car to acceleration point**
- **Column Passing and Lane Changes are prohibited prior to the start line**
- **Jump/False start Reviews**
 - Gaps
 - Timed/Early Acceleration
 - Out of Line
 - Column Passing
- **Official Race start is FIRST time by**

PROPER START



IMPROPER START



FULL COURSE YELLOW

**Race control radio, in-car lights, trackside lights, double yellow flags displayed
FCY during mandatory Pit Stop Window the PITS are CLOSED**

Safety VEHICLES may begin to move as soon as FCY is ANNOUNCED

Leader to safety car speed, all cars pack up – respect the area of incident/Track Services personnel

- Safety Car dispatches from pit exit
- RC instructions regarding track condition over radio

Lights out by turn 16

- Maintain SC speed, let SC get away, *no more tire scrubbing*

Restart Acceleration zone – Turn 17

- Passing can occur at the display of green flag
- Expect restarts to be faster than original start

RESTART ACCELERATION ZONE

- Restart Acceleration Zone is Turn 17



PIT COMMIT / PIT CLOSED LIGHT

- MUST HAVE PART OF CAR TOUCHING, AND BE TWO WHEELS TO THE RIGHT OF THE SOLID YELLOW LINE THAT DIVIDES THE RACETRACK FROM PIT ENTRY PRIOR TO THE PIT CLOSED LIGHT (ON TIRES AT DIVIDING POINT) ILLUMINATING IN ORDER TO BE CONSIDERED COMMITTED TO THE PITS.



MANDATORY PIT STOP

1. No respect of the time between the two pit lane timing loops under the published time (Art. 41). If the driver stays in the pitlane for a time that is less than (or equal to) 1 “seconds respect to the minimum time imposed, the driver will receive a time penalty equal to three times time period not respected. If the driver stays in the pitlane for a time that is more than 1 “seconds less than the minimum time imposed, the driver will receive a penalty equal to Drive Through.
2. All stopping or driving at an abnormally slow speed, lower than 55 kph after the pit stop carried out at the designated Pit/Area: Drive-Through;
3. All speeding over the limit of 60 kph in the pit lane: Drive-Through;
4. Start of the obligatory pit stop outside the obligatory times (Art. 41): Drive- Through penalty.

However, should any of the penalties under 1) to 4) above be imposed and notified during the last 5 minutes or the 3 last laps, or after the end of the race, a 30-second time penalty shall be added to the elapsed time of the car concerned in cases 2) and 3) and a time penalty of 30 seconds plus the original Stop & Go Penalty in cases 1) and 4).

PIT STOP INFO

Minimum time pit in loop to pit out loop

- Two drivers = 93 Seconds
- Solo driver = 96 Seconds

Pit distance: 21,312 Inches

Driver must change Driver ID plug before leaving pit exit or it will not register. Driver/car **may** receive a drive through to rectify late Driver ID plug changes.

Driving slower than 60kph in the fast lane may be penalized. Transition lane should be used if less than 60kph to not interfere with Cars in the fast lane.

ON TRACK

- **LOCAL YELLOWS**
 - No passing
 - Slow to a safe speed
- **BLOCKING / DEFENDING INCREASES RESPONSIBILITY**
 - Proactive vs. Reactive
 - Race how you would like to be raced
- **COEXISTENCE – MULTI CLASS RACING**
 - Awareness
 - Coexist
 - Blue Flags / Car being passed be consistent!

ADDITIONAL PENALTIES

- **Race Control may impose larger than D.T. penalties for Incident Responsibility**
 - **Stop and Go**
 - **Stop and Hold**
- **10 Second Penalty**
 - The Race Director may apply a 10 second time penalty
 - Potential applications:
 - Jump start
 - PUY after the incident but before green flag
 - Incident responsibility that resulted in no change of position
 - 10 second penalties are applied as the penalized Car crosses Start/Finish at the Checker
 - The 10 second penalty is intended to increase the range of penalty options in sprint races

RACE ENDS UNDER FCY

ART. 37.1.8. Should the Race end under Full Course Yellow (FCY) conditions, Cars must maintain the Safety Car speed until crossing the Finish Line at the checkered flag. Cars must remain in single file and maintain a consistent gap of approximately two (2) Car lengths to the Car in front of them. Any gamesmanship or manipulation of the pace or procedure is prohibited and may be penalized.

POST RACE

- REFER TO MxM
- ALL CARS TO PIT LANE AFTER CHECKER
 - IMSA PERSONNEL WILL ASSIST IN SPLITTING PODIUM CARS IN PIT LANE
 - IMSA PERSONNEL WILL ASSIST IN SPLITTING TECH CARS IN PIT LANE
 - CREW FOR PODIUM CARS NEED TO BE READY TO MOVE CARS OFF PIT LANE

WET TIRE CHANGE PROCESS

If Race is not started as declared 'Wet', the following process is used:

- Race Control announces FCY and deploys Safety Car to collect the field.
- The running order of the Cars is taken at S/F for all Cars.
- After all Cars have crossed S/F but before arriving at the pit entry, Race Control declares Red Flag.
- The Race Director declares the Race 'Wet'.
- The Safety Car leads the field into the pit lane.
- Cars are directed to their pit boxes for the exclusive purpose of changing to wet tires, no other work.
- Teams are given Five (5) minutes to change tires.
- Cars unable to continue must inform their Pit Official.
- The Pit Officials will call the order of the Cars as taken at S/F to release from their pit box one at a time and proceed on track behind the Safety Car.
- Changes to the running order in case of any misfortune after crossing S/F are restored for the restart.
- A 'confirmation lap' is performed to check the order of the Cars and to direct any necessary changes.
- The Race is resumed from FCY as normal.

WET WEATHER PROTOCOLS

- IF SESSION / RACE IS DECLARED WET ALL CARS START ON WET TIRES
 - TEAM CHOICE IF OR WHEN TO GO TO DRY TIRES
 - CANNOT CHANGE TIRES DURING THE MANDATORY PIT STOP WINDOW

SUPER TROFEO NORTH AMERICA

BEST OF LUCK TO ALL!



SQUADRA CORSE