



# ALAN JAY AUTOMOTIVE NETWORK 120

FRIDAY, MAR 14 AT 2:10PM ET   YouTube



# SERIES CONTACTS

---

Beaux Barfield	Race Director	(832) 260-1032
Brian Wilson	Series Manager	(386) 281-9494
Gayle Burnham	Member Services	(386) 235-7800
Cory Posocco	Logistics & Event Ops	(386) 566-8313
David Pees	Timing & Scoring	(386) 308-8866
Eric Haverson	Technical	(386) 562-7214
Holly Langer	Paddock Layout	(386) 871-0241
Johnny Knotts	Pit Lane Supervisor	(813) 763-4669
Marisa Ross	Series Coordinator	(386) 293-1474
Paul Walter	Sporting Regulations	(614) 598-6783
Robert Bosworth	Security & HV Safety	(704) 728-8087
Roy Spielmann	Track Services	(414) 702-0905
Ryan McLean	Medical Liaison	(386) 285-6913

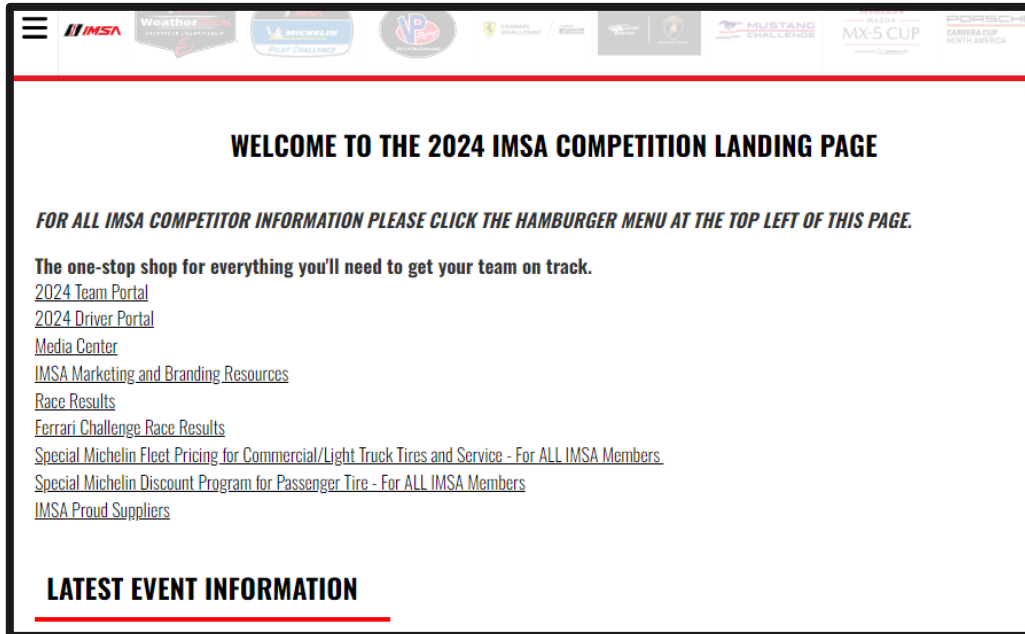
[2025 IMSA Operational Contact List](#)

# IMSA RESOURCES

IMSA COMPETITOR LANDING PAGE:

<https://www.imsa.com/competitors/>

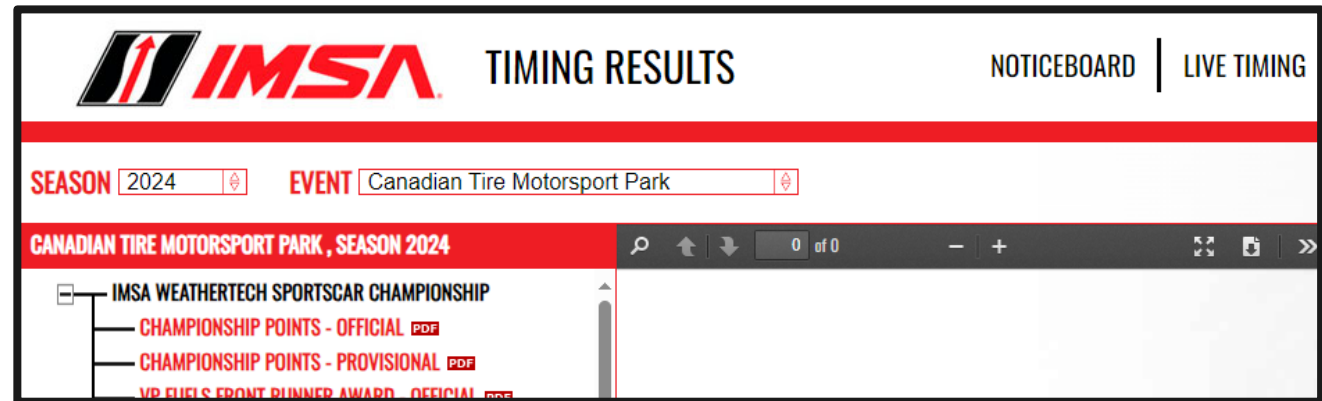
- Team Portal
- Event Information
- Rules & Regulations
- Marketing & Branding Page



IMSA NOTICE BOARD:

<http://results.imsa.com/>

- Driver & TM Briefings
- Entry Lists
- Minute by Minute
- Timing Results
- Penalties





# IMSA RESOURCES

- All IMSA Event Schedules

The screenshot shows the IMSA website's 2024 Competition Landing Page. At the top, there is a navigation bar with logos for IMSA, WeatherTech SportsCar Championship, Michelin Pilot Challenge, VP Racing SportsCar Challenge, Ferrari, and Rolex. Below this is a main content area with the heading "WELCOME TO THE 2024 IMSA COMPETITION LANDING PAGE" and a red arrow pointing to the "EVENT INFORMATION" link in the left sidebar. The sidebar menu includes: COMPETITORS, HOME, EVENT INFORMATION (circled in red), TEST EVENT INFORMATION, RULES & REGULATIONS, MARKETING & BRANDING, FORM & APPLICATIONS, IMSA, and PROUD SUPPLIERS. The main content area contains the following text: "FOR ALL IMSA COMPETITOR INFORMATION PLEASE CLICK THE HAMBURGER MENU AT THE TOP LEFT OF THIS PAGE." and "The one-stop shop for everything you'll need to get your team on track." followed by links for 2024 and 2025 Team and Driver Portals, Media Center, Team and Driver Video & Photo Licensing, IMSA Marketing and Branding Resources, Race Results, and Ferrari Challenge Race Results. A special Michelin Fleet Pricing program is also mentioned. On the right side, there is a "2025 EVENTS" section with three event listings: "Roar Before The Rolex 24" (Jan 17 to Jan 19, Daytona Beach, FL), "Rolex 24 At Daytona" (Jan 23 to Jan 26, Daytona Beach, FL), and "Mobil 1 Twelve Hours of Sebring" (Mar 12 to Mar 15, Sebring, FL). Each event listing includes a download link for the "Provisional Schedule & SR 11/20/24".

# IMSA TRACK SERVICES

## IMSA CHASE VEHICLES

- Chase 1
- Chase 2
- Chase 3
- Chase 4

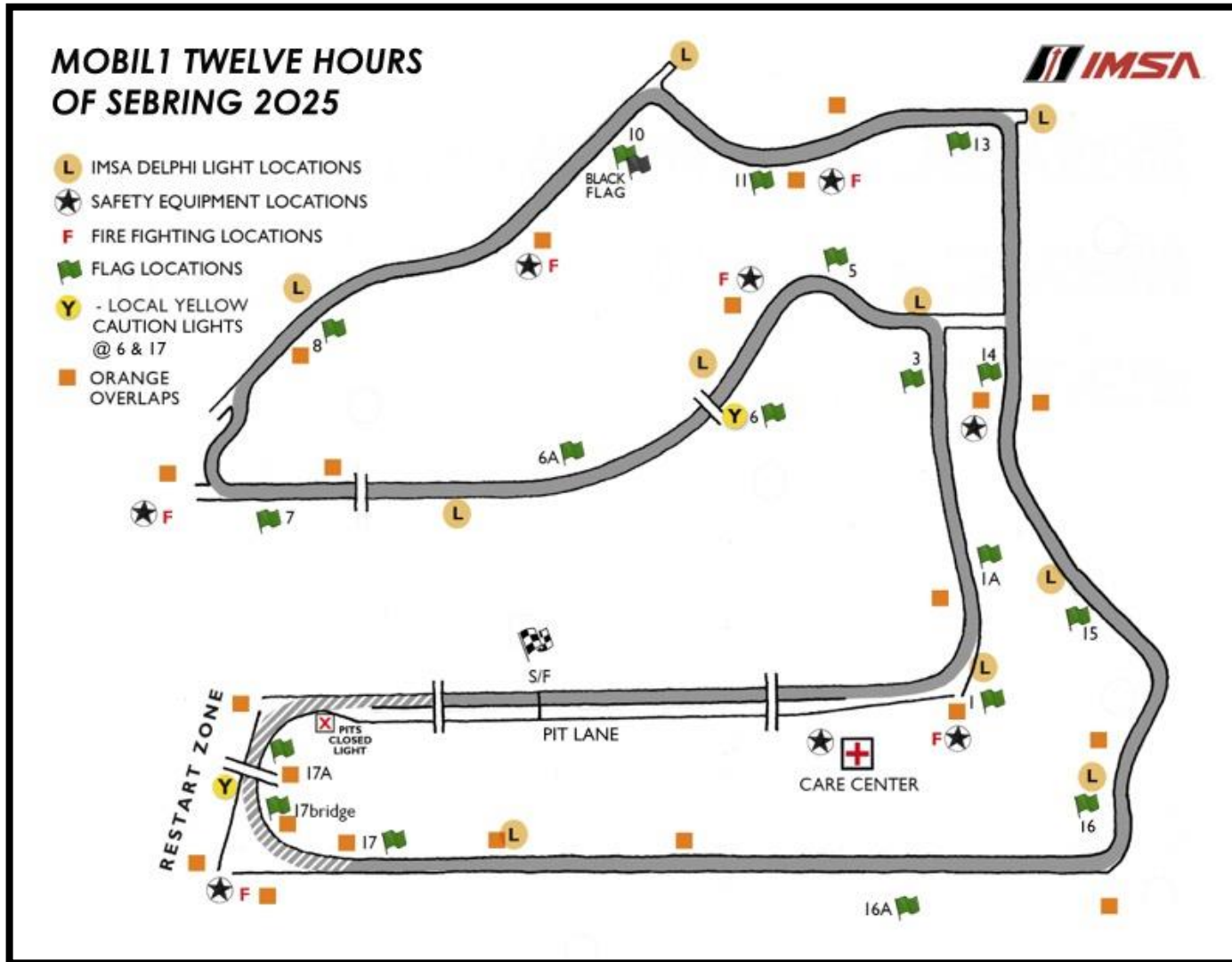
## ON-TRACK ASSISTANCE

- Communication with Track Services Medic
- Neutral and power shut off
- Follow direction of on-scene Track Services personnel
- Maintain a safe speed and distance when passing on-track incidents with Track Services team members present



Contact: Roy Spielmann 414.702.0905

# OFFICIAL TRACK MAP



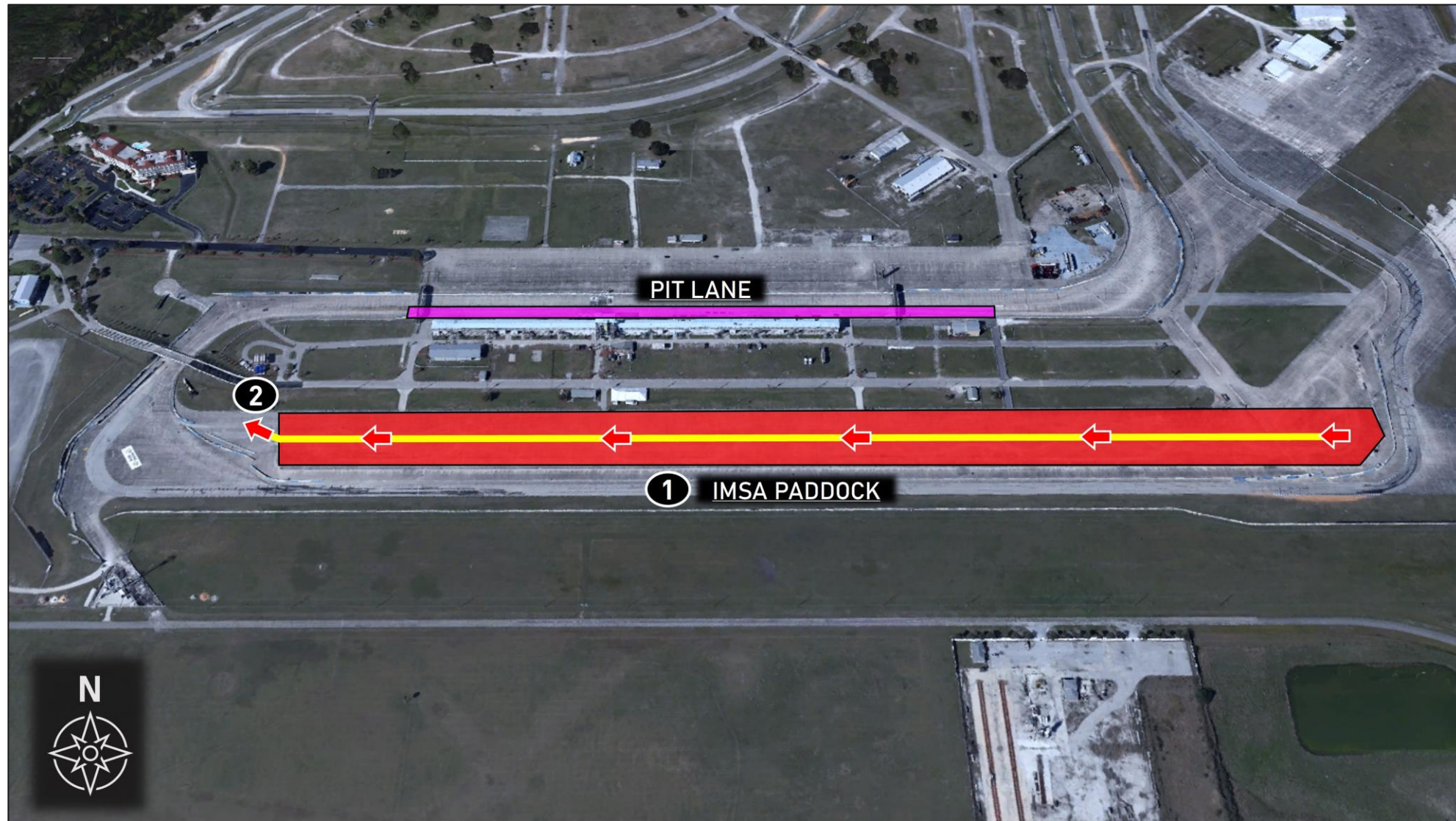


## Directions

1. Exit team set-up and proceed west, towards Turn 17
2. Enter false grid

## Notes

- Use caution and follow traffic patterns
- Must not be used during on-track sessions. Instead, cars go straight to pit lane.



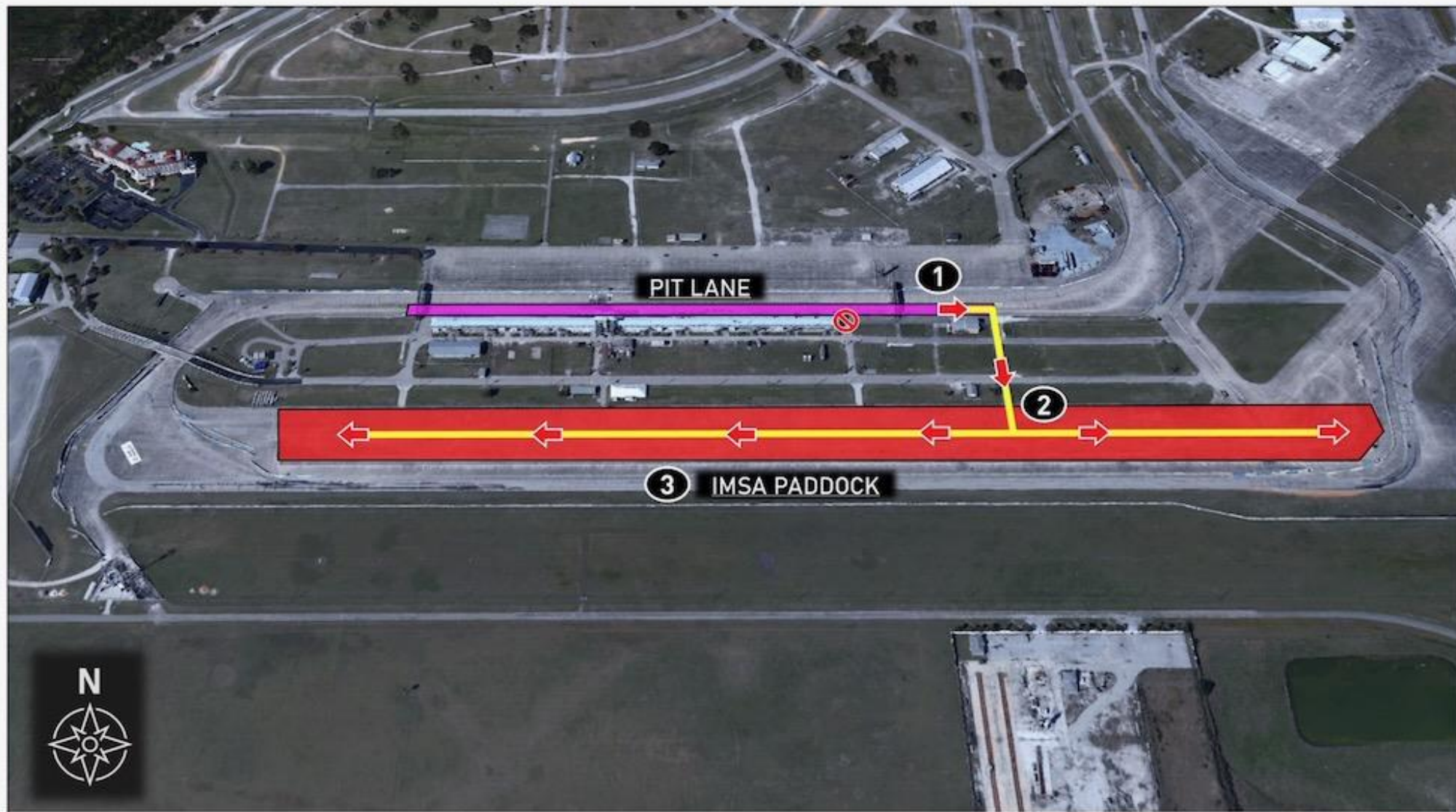


## Directions

1. Exit Pit Lane at Care Center and proceed straight into IMSA paddock
2. Keep right in paddock
3. Proceed to team space

## Notes

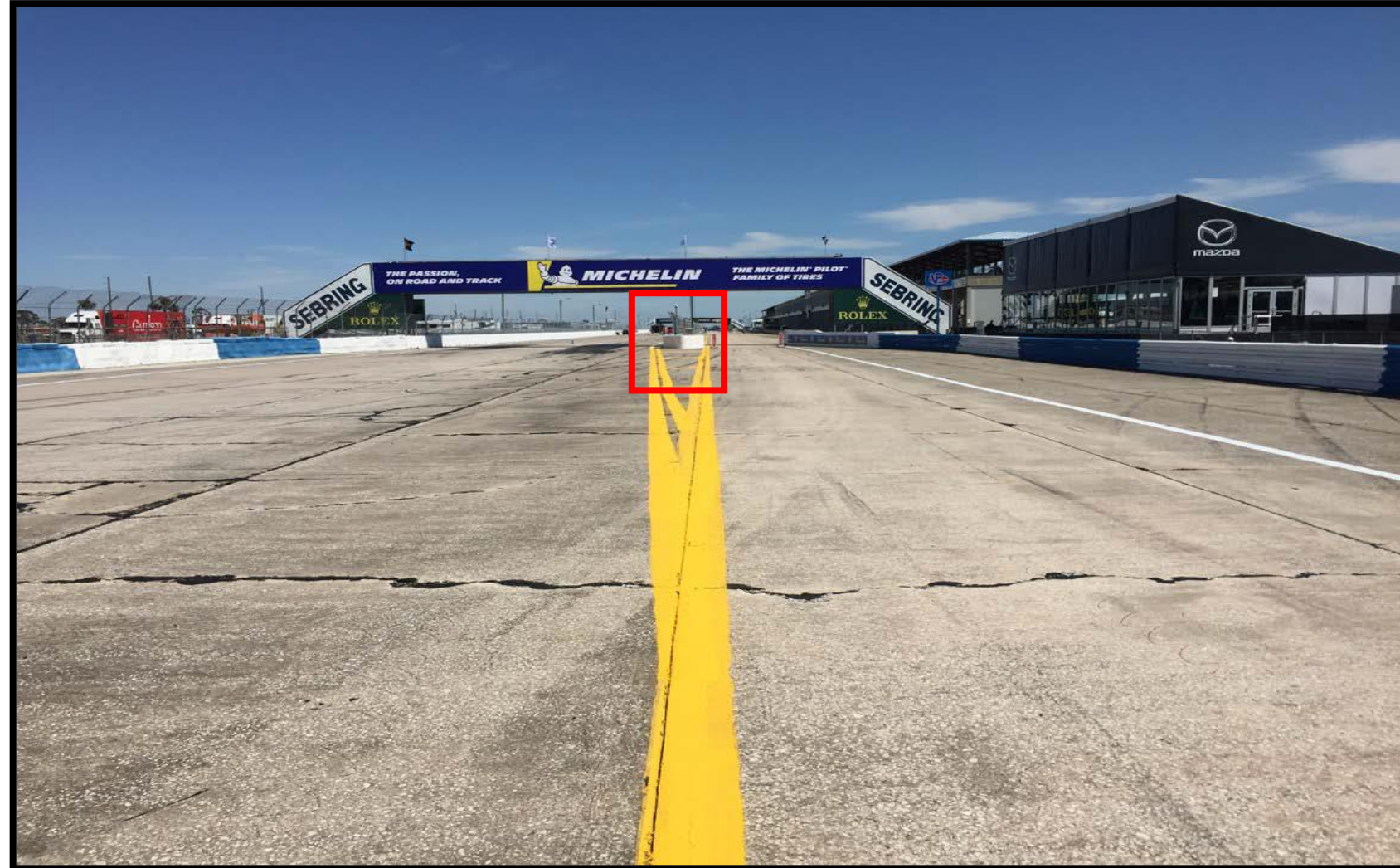
- Use caution and follow traffic patterns
- Pit Lane exit at end of Pit Structure will not be used





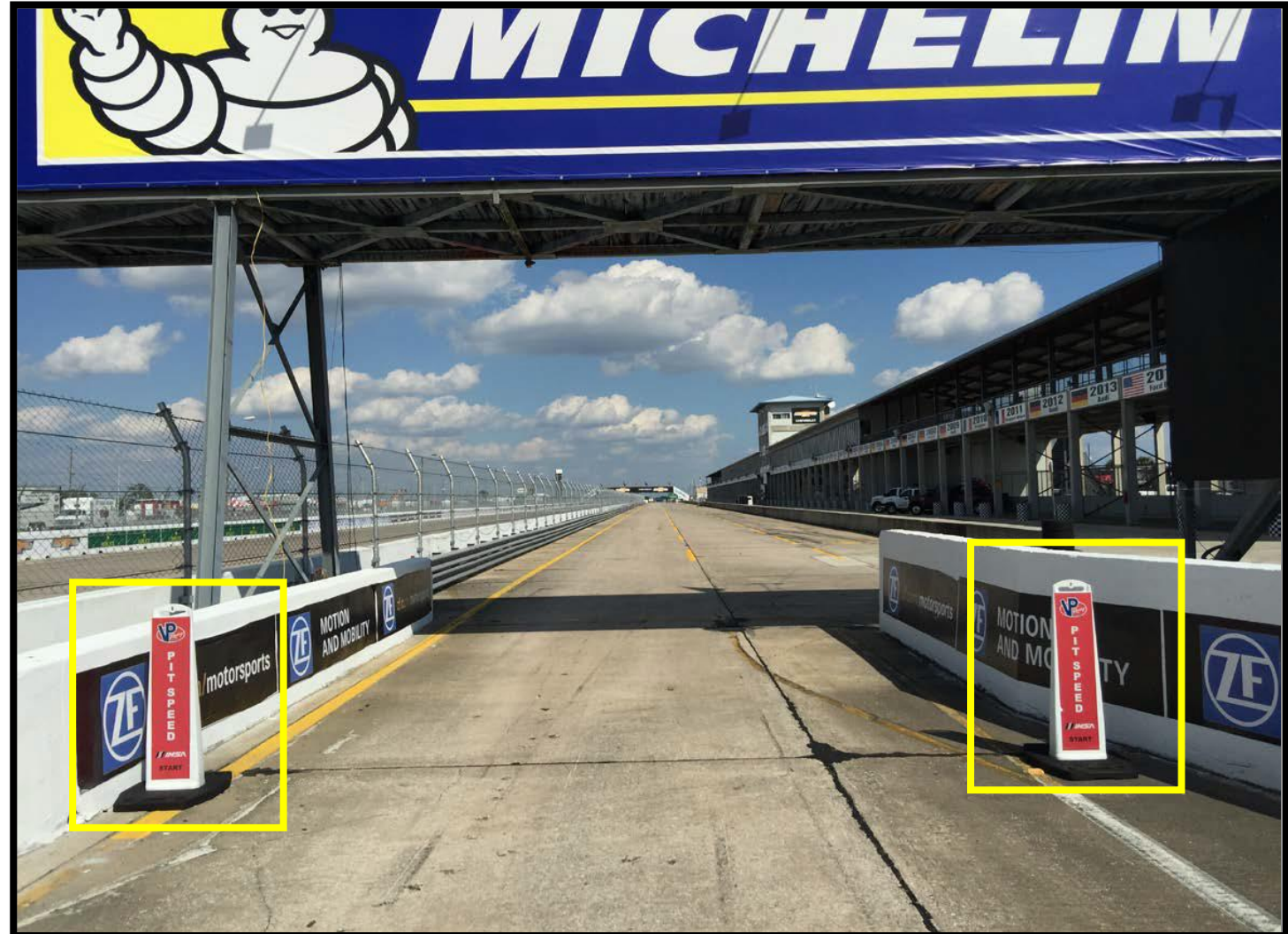
# PIT COMMIT

- Must have part of the car touching and be two wheels to the right of the solid yellow line that divides the racetrack from pit entry prior to the pit closed light (on tires at dividing point) illuminating to be considered committed to the pits.



# PIT LANE SPEED LIMIT

- Pit Lane speed limit begins at red pylons





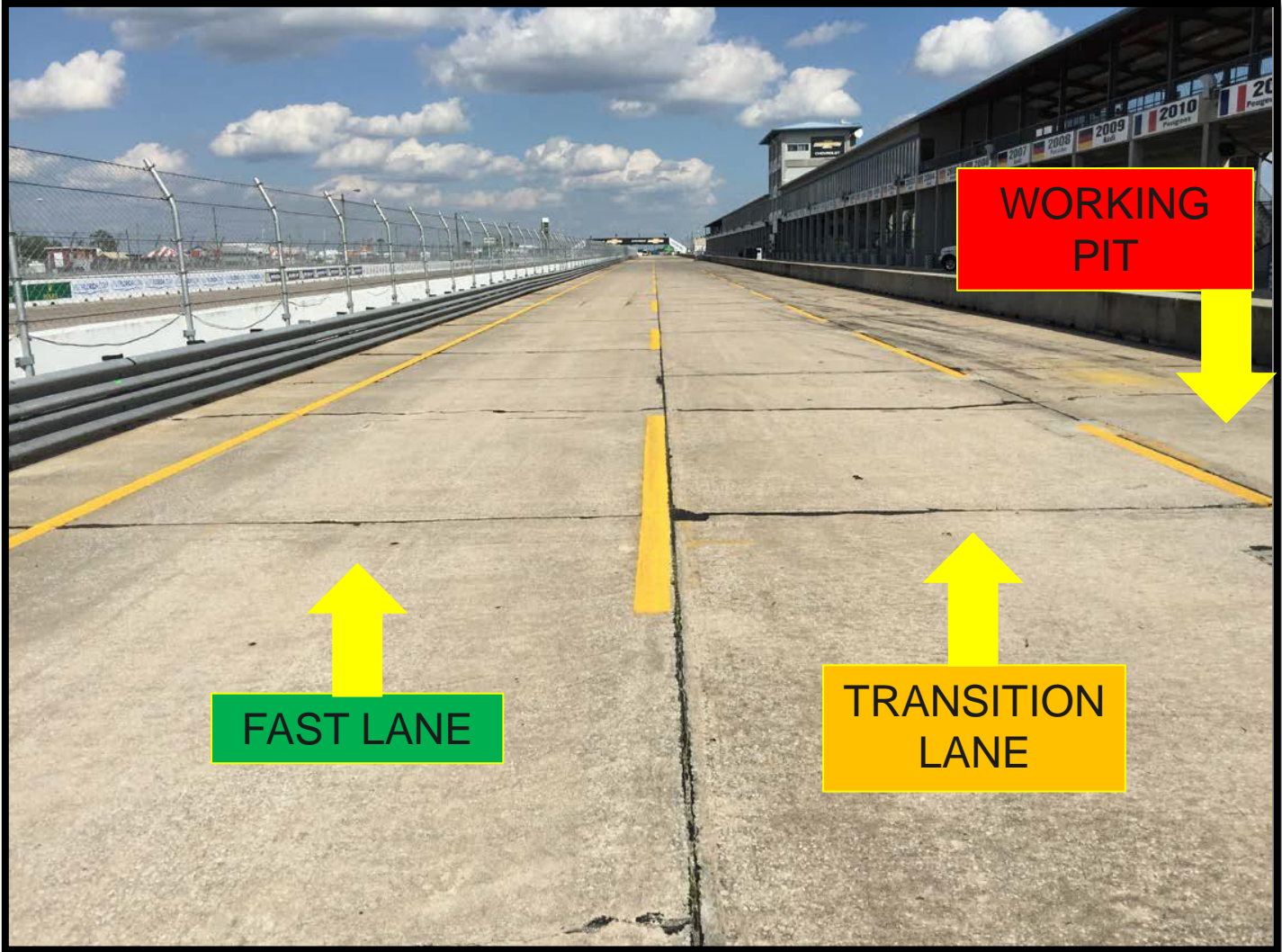
# PIT CLOSED REPEATER LIGHT

- Positioned on pit wall for Team Managers





# PIT LANE PROTOCOL



# PIT EXIT CLOSED

- Pit Exit closed light





# PIT EXIT / PENALTY BOX

- Pit Exit / Penalty Box





# PIT EXIT MERGE

- Cars exiting the Pit Lane must remain two wheels to the right of the yellow merge line until it ends.
- Merge safely into Turn 1.
- Respect the speed difference of those already on track.



# ORANGE OVERLAPS

- Overlaps are locations to remove disabled Cars from the track.
- Overlaps are marked throughout the circuit and indicated on the official Track Map.
- Competitors with disabled Cars on track are requested to use the overlaps whenever unable to continue to the pits.



# ORANGE OVERLAPS





# ORANGE OVERLAPS



# RESTART ACCELERATION ZONE

- Restart Acceleration Zone is Turn 17



# LOCAL YELLOW LIGHT AT TURN 17

- Used to signify a local yellow
- Solid Yellow Light
- Not part of the IMSA Yellow Light System





# RACE START

---

- **Two (2) Formation Laps**
- **Safety Car(s) enter track using the full pit lane exit**
- **Split Start – GS and TCR (Two Safety Cars)**
- **Pack up first time by / Pair up exiting Turn 14 second time**
- **Stay with Safety Cars**
- **Safety Cars enter pits**
- **Acceleration point**
  - **Polesitters must maintain the pace of the Safety Car to acceleration point**
- **Column Passing and Lane Changes are prohibited prior to the start line**
- **Jump/False start Reviews**
  - Gaps
  - Timed/Early Acceleration
  - Out of Line
  - Column Passing

# FULL COURSE YELLOW (STANDARD)

---

- **Pits Closed**
- **Full Course Yellow (FCY lights and double yellow flags)**
- **Overall Leader – Safety Car speed**
- **Safety Car dispatched from Turn 1 to Overall Leader**
- **Pass-Around**
- **Pits open - GS only**
- **Pits open - TCR only**
- **Final Wave-By**
- **Class Split**
- **Restart**
- **Emergency service Cars must D-T**
- Emergency service fuel Cars must fuel at first opportunity
- Failure to perform emergency service drive-through: Stop plus 10 seconds
- More than emergency service taken: Stop plus 60 seconds

# FULL COURSE YELLOW (SHORT)

- **Pits Closed**
- **Full Course Yellow (FCY lights and double yellow flags)**
- **Overall Leader – Safety Car speed**
- **Safety Car dispatched from Turn 1 to Overall leader**
- **Pass-Around**
- **Pits remain closed**
- **Class Split**
- **Pits open (all classes) after all Cars pass Pit-In, coming to the restart**
- **Restart**
- **Emergency service Cars must D-T**
- Emergency service fuel Cars must fuel at first opportunity
- Failure to perform emergency service drive-through: Stop plus 10 seconds
- More than emergency service taken: Stop plus 60 seconds



# ON TRACK

---

- **RESTARTS**
- **LOCAL YELLOWS**
- **BLOCKING / DEFENDING INCREASE RESPONSIBILITY**
  - Proactive vs. Reactive
- **CONTACT**
  - Responsibility
  - Class Racing
  - Multi-class incidents
- **COEXISTENCE**
  - Awareness
  - Coexist

# RACE CONTROL

---

- **COMMUNICATION**

- Radio Communications
- Race Control Notification System (RCNS)/Instant Messenger
  - Race Control
  - Timing & Scoring
  - Technical Department

- **REVIEW PROCESS**

- Data
- Video
- All incidents are reviewed for the purpose of apportioning individual responsibility that may result in penalties. Race how you expect to be raced and remember there are numerous new competitors. Best of luck and make it a great race!

# MISCELLANEOUS REMINDERS

---

- **TRACK WALK**
  - Scheduled at all IMSA Events
  - Walk only
  - Take time to view items on official track map
- **Pairing Up for Race Starts**
- **Emergency Service**
  - Dry Type Tires to Wet Type Tires Permitted
- **Pit Lane Equipment without Crew Member**
- **Red Flag Penalties**



# MISCELLANEOUS REMINDERS

---

- **Pass-Arounds, Final Wave-By and Class Splits are two-phase procedures.**
  - PREPARE
  - COMMENCE
  - Competitors who fail to prepare and/or commence when the commands are communicated from Race Control and subsequently lose positions will not be given positions back.
- **Multi-Class Racing**
  - Performance Differences
    - Downforce
    - Straight-Line Speed
    - Surprises
    - Interactions
    - Remain Predictable
- **Driver “Bandwidth”**

# 2025 CHANGES

---

- Red Flag Drive Time
  - If reduced to zero, all Drivers MUST still drive
- Helmet Cams
  - Only one specific Homologated Camera Permitted
  - See Regs
- Non-Functioning Transponder or Driver ID
  - Must Repair
  - Additional Drive Through for failure to comply
- Red Flag during practice
  - Loss of Fast Lap from qualifying
- Pairing Up for Race Start





# ALAN JAY AUTOMOTIVE NETWORK 120

FRIDAY, MAR 14 AT 2:10PM ET   YouTube







Let Racing Force help you plan for your upcoming racing season with OMP, Bell and Racing Spirit Products!

Racing Force is one of IMSA's longest standing Partners, with more than 15 years as one of IMSA's Proud Partners.

For 2025 Racing Force is offering a **30% discount** on all Racing Force Products to IMSA competitors and teams. This discount can be applied by confirming your participation in an IMSA sanctioned series with the Racing Force Team.

To order Racing Force Products or for more information, please contact:

**Kenji Yrey**

Custom Products & Logistics Coordinator

[Kenji.yrey@racingforce.com](mailto:Kenji.yrey@racingforce.com)

786-479-4722







**RACING OPTICS®**

Looking for windshield tear-offs?

Racing Optics, a Proud Partner of IMSA, is the industry leader in multilayer, laminated tear-offs, and is proud to offer their product and installation services to IMSA teams and competitors.

For those looking to purchase product away from the track, Racing Optics is excited to offer IMSA teams and competitors a special **20% off promo code** for Racing Optics windshield tear-offs on Pro-Tint's [online shop](#).

Use code **"IMSA20"** at checkout to receive your discount.

To schedule an install or for more information, please contact:

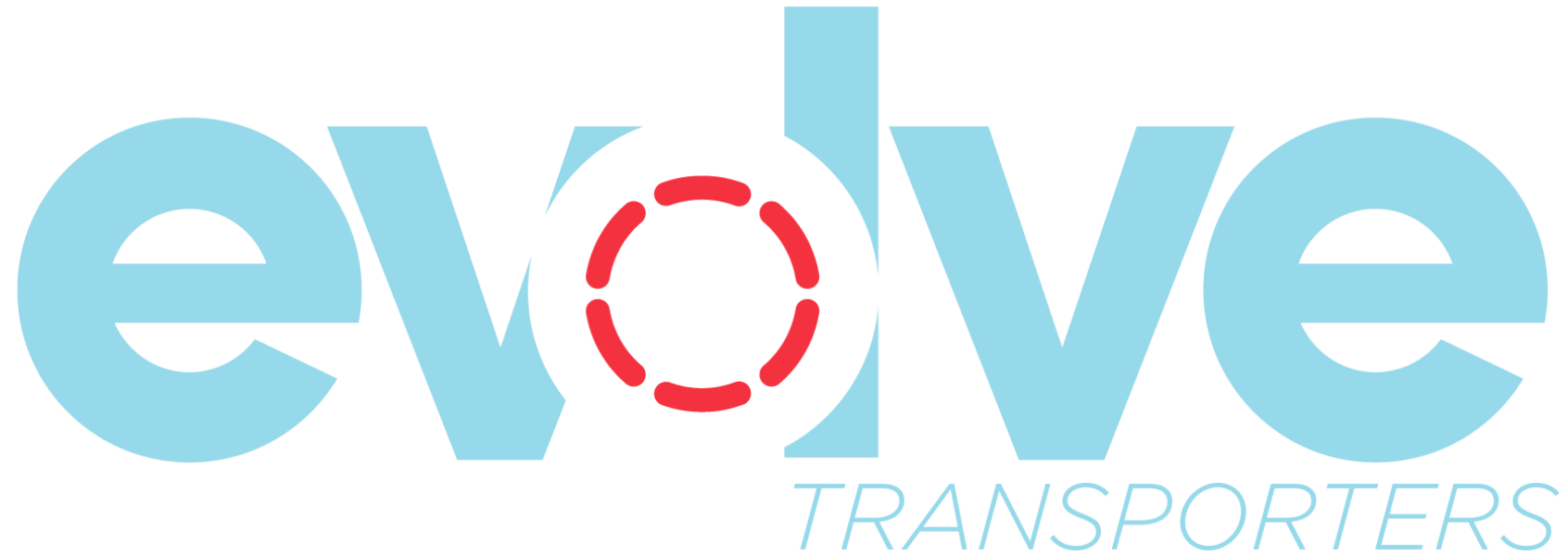
**Chris Colton**

Applications Engineer / Sponsorships & Corporate Relations

[C.Colton@racingoptics.com](mailto:C.Colton@racingoptics.com)

980-439-6485





**Preventative Maintenance | Repairs | Evaluations | Upgrades**

**To schedule at-track support, please email:**

**[tracksupport@evolvetransporters.com](mailto:tracksupport@evolvetransporters.com)**



# STAY FROSTY® PERFORMANCE COOLANTS

Stay Frosty® Race Ready is a proprietary VP Racing Fuels coolant formulated for high-compression, high-heat racing engines. It contains a specialized blend of heat transfer agents that drastically improve coolant's ability to transfer heat away from high temperature cylinder heads. Temperatures of engines are reduced by up to 30°F compared to conventional glycol-based coolant.

***100% Water-Based Glycol-Free Formula***

***Reduces Engine Temps Up to 30°F***

***Blended with Chemically Stable Reverse Osmosis Water***

***Ready-To-Use – Just Pour In (Also Available in Clear)***



OFFICIAL PERFORMANCE COOLANT

***Lower Temps.  
More Power.***