



MOBIL 1 TWELVE HOURS OF SEBRING

SATURDAY, MAR 15 AT 10:00AM ET [peacock](#) [YouTube](#)



SERIES CONTACTS

Beaux Barfield	Race Director	(832) 260-1032
Brian Wilson	Series Manager	(386) 281-9494
Carol Mueller	Member Services, Series Administrator	(386) 262-8932
Cory Posocco	Logistics & Event Ops	(386) 566-8313
David Pees	Timing & Scoring	(386) 308-8866
Eric Haverson	Technical	(386) 562-7214
Holly Langer	Paddock Layout	(386) 871-0241
Johnny Knotts	Pit Lane Supervisor	(813) 763-4669
Paul Walter	Sporting Regulations	(614) 598-6783
Robert Bosworth	Security & HV Safety	(704) 728-8087
Roy Spielmann	Track Services	(414) 702-0905
Ryan McLean	Medical Liaison	(386) 285-6913

[2025 IMSA Operational Contact List](#)

IMSA RESOURCES

IMSA COMPETITOR LANDING PAGE:

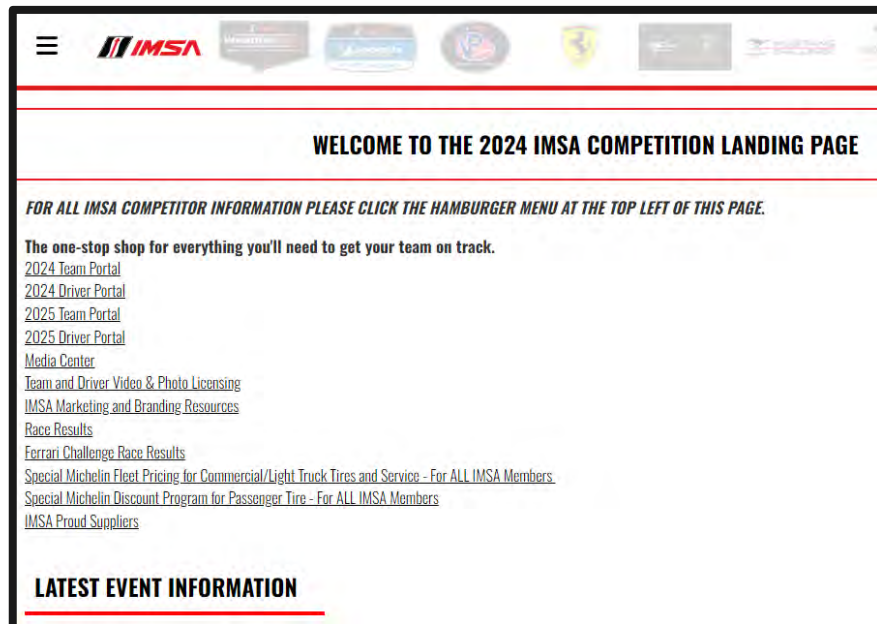
<https://www.imsa.com/competitors/>

- Team Portal
- Event Information
- Rules & Regulations
- Marketing & Branding Page

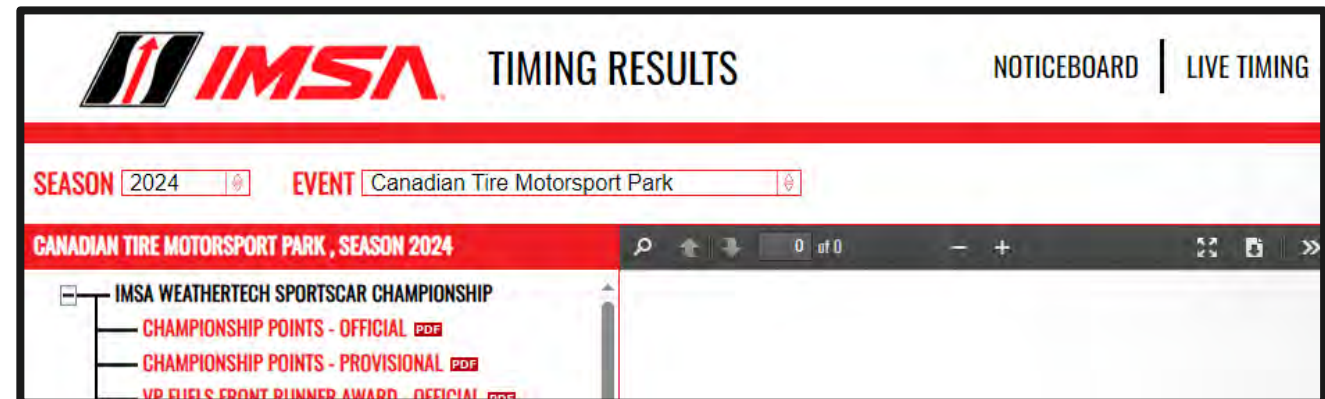
IMSA NOTICE BOARD:

<http://results.imsa.com/>

- Driver & TM Briefings
- Entry Lists
- Minute by Minute
- Timing Results
- Penalties



The screenshot shows the top navigation bar with the IMSA logo and several partner logos. Below the navigation bar is a red header with the text "WELCOME TO THE 2024 IMSA COMPETITION LANDING PAGE". Underneath, there is a message: "FOR ALL IMSA COMPETITOR INFORMATION PLEASE CLICK THE HAMBURGER MENU AT THE TOP LEFT OF THIS PAGE." A list of links follows, including "2024 Team Portal", "2024 Driver Portal", "2025 Team Portal", "2025 Driver Portal", "Media Center", "Team and Driver Video & Photo Licensing", "IMSA Marketing and Branding Resources", "Race Results", "Ferrari Challenge Race Results", "Special Michelin Fleet Pricing for Commercial/Light Truck Tires and Service - For ALL IMSA Members", "Special Michelin Discount Program for Passenger Tire - For ALL IMSA Members", and "IMSA Proud Suppliers". At the bottom, there is a section titled "LATEST EVENT INFORMATION".



The screenshot shows the IMSA Timing Results page. The top navigation bar includes the IMSA logo, "TIMING RESULTS", "NOTICEBOARD", and "LIVE TIMING". Below the navigation bar, there are two dropdown menus: "SEASON" set to "2024" and "EVENT" set to "Canadian Tire Motorsport Park". The main content area is titled "CANADIAN TIRE MOTORSPORT PARK, SEASON 2024" and features a list of links for "IMSA WEATHERTECH SPORTSCAR CHAMPIONSHIP", including "CHAMPIONSHIP POINTS - OFFICIAL PDF", "CHAMPIONSHIP POINTS - PROVISIONAL PDF", and "VIP CLUBS FRONT RUNNER AWARD - OFFICIAL PDF".

IMSA RESOURCES

- IMSA Event Schedules

COMPETITORS

HOME

EVENT INFORMATION >

TEST EVENT INFORMATION

RULES & REGULATIONS >

MARKETING & BRANDING

FORM & APPLICATIONS >

IMSA

PROUD SUPPLIERS

WELCOME TO THE 2024 IMSA COMPETITION LANDING PAGE

FOR ALL IMSA COMPETITOR INFORMATION PLEASE CLICK THE HAMBURGER MENU AT THE TOP LEFT OF THIS PAGE.

The one-stop shop for everything you'll need to get your team on track.

[2024 Team Portal](#)

[2024 Driver Portal](#)

[2025 Team Portal](#)

[2025 Driver Portal](#)

[Media Center](#)

[Team and Driver Video & Photo Licensing](#)


[IMSA Marketing and Branding Resources](#)


[Race Results](#)


[Ferrari Challenge Race Results](#)


[Special Michelin Fleet Pricing for Commercial/Light Truck Tires and Service - For ALL IMSA Members](#)

2025 EVENTS

 **Roar Before The Rolex 24**
Jan 17 to Jan 19
Daytona Beach, FL
Download:
[Provisional Schedule & SR 11/20/24](#)

 **Rolex 24 At Daytona**
Jan 23 to Jan 26
Daytona Beach, FL
Download:
[Provisional Schedule & SR 11/20/24](#)

 **Mobil 1 Twelve Hours of Sebring**
Mar 12 to Mar 15
Sebring, FL

 **Acura Grand Prix of Long Beach**
Apr 11 to Apr 12
Long Beach, CA

IMSA TRACK SERVICES

IMSA CHASE VEHICLES

- Chase 1
- Chase 2
- Chase 3
- Chase 4

ON-TRACK ASSISTANCE

- Communication with Track Services Medic
- Neutral and power shut off
- Follow direction of on-scene Track Services personnel
- Maintain a safe speed and distance when passing on-track incidents with Track Services team members present



Contact: Roy Spielmann 414.702.0905

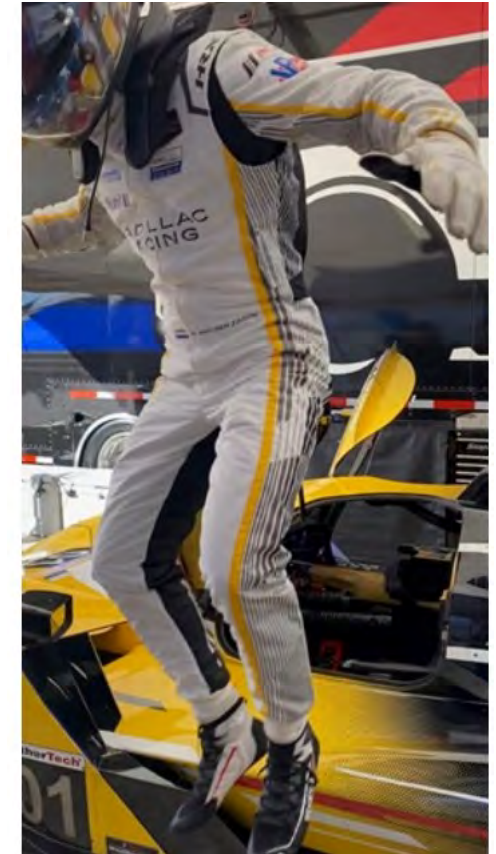
BASIC AWARENESS LEVEL TRAINING + PROXIMITY

Driver Emergency Egress Procedure

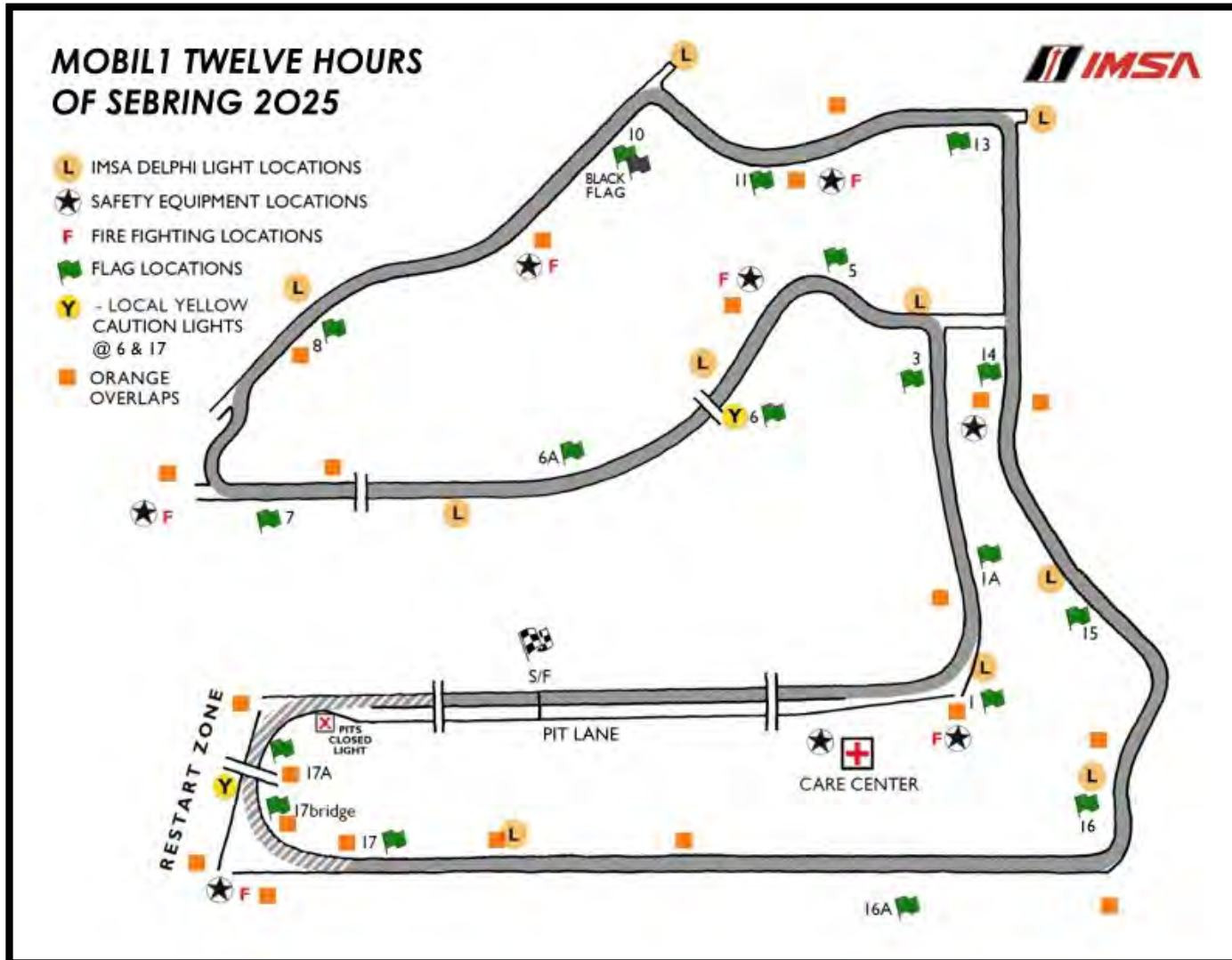
In case of need to exit a car in an unsafe condition:

- Do not touch ground and Car at the same time
- No assistance to be given
- Exit via door onto sidepod
- Stand on sidepod
- Jump away from Car and onto ground in one clear motion
- Do not touch Car

Should this not be possible, IMSA Track Services will lead extrication.



OFFICIAL TRACK MAP

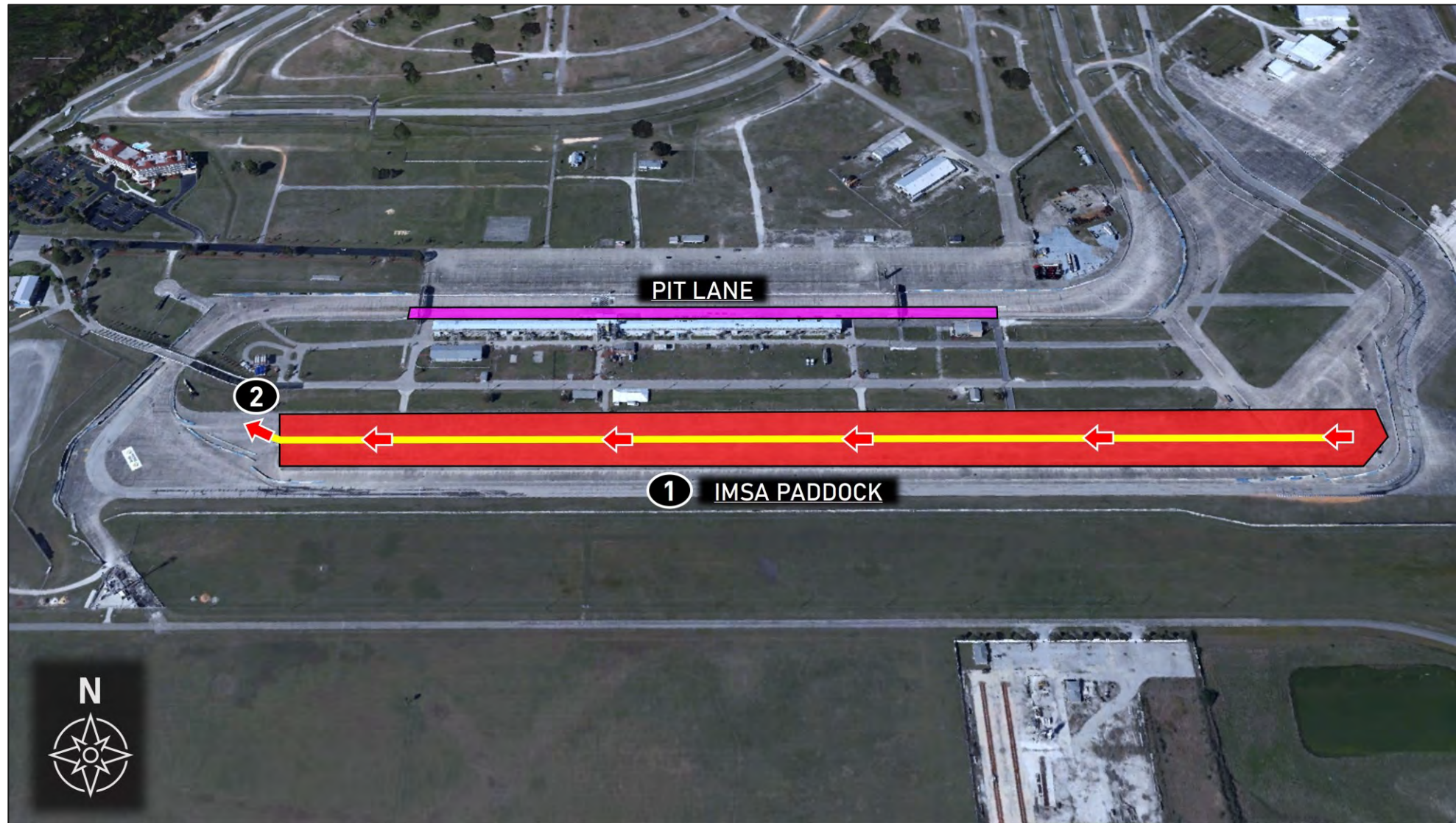


Directions

1. Exit team set-up and proceed west, towards Turn 17
2. Enter false grid

Notes

- Use caution and follow traffic patterns
- Must not be used during on-track sessions. Instead, cars go straight to pit lane.



Directions

1. Exit Pit Lane at Care Center and proceed straight into IMSA paddock
2. Keep right in paddock
3. Proceed to team space

Notes

- Use caution and follow traffic patterns
- Pit Lane exit at end of Pit Structure will not be used



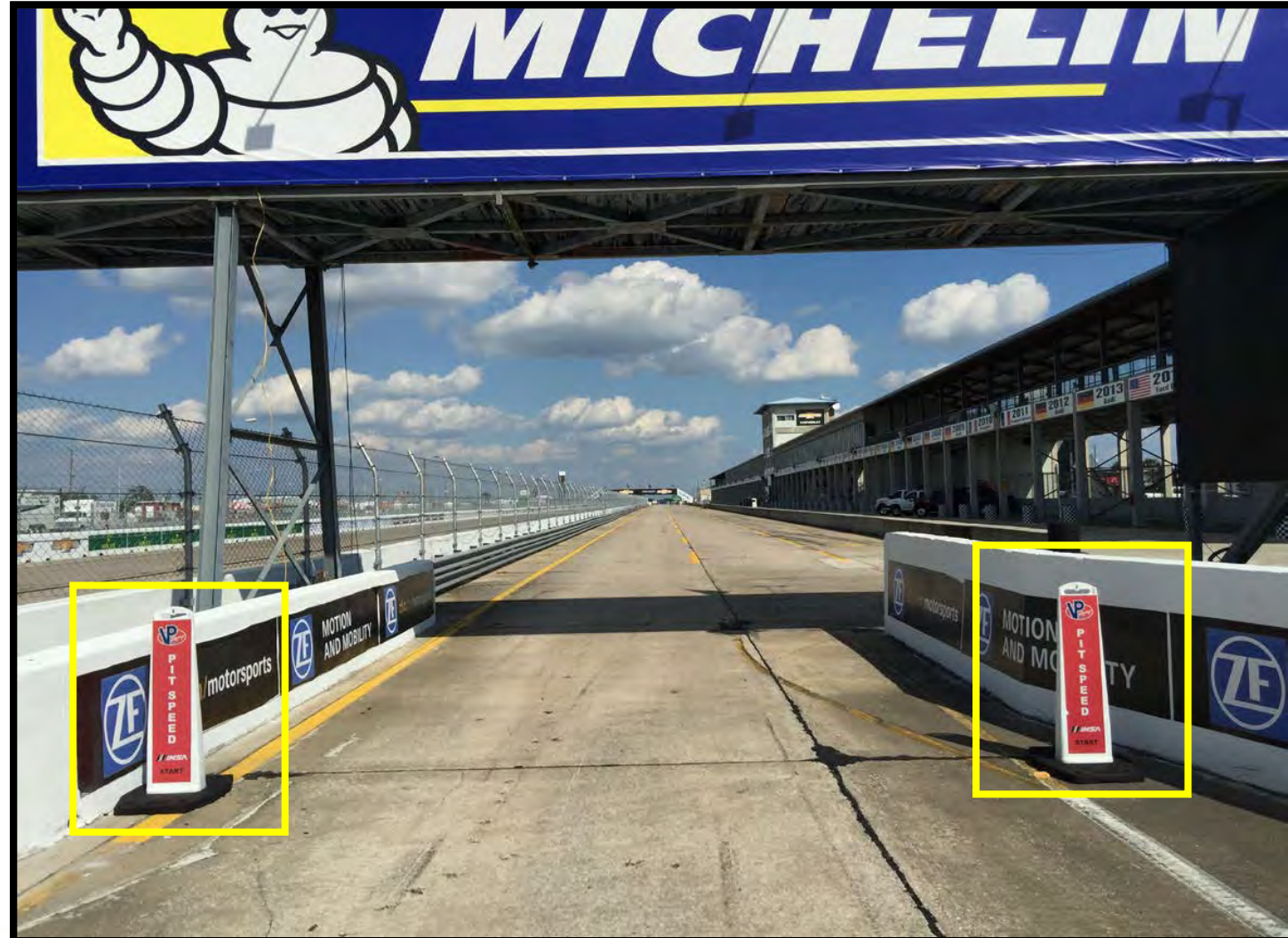
PIT COMMIT

- Must have part of the car touching and be two wheels to the right of the solid yellow line that divides the racetrack from pit entry prior to the pit closed light (on tires at dividing point) illuminating to be considered committed to the pits.



PIT LANE SPEED LIMIT

- Pit Lane speed limit begins at red pylons

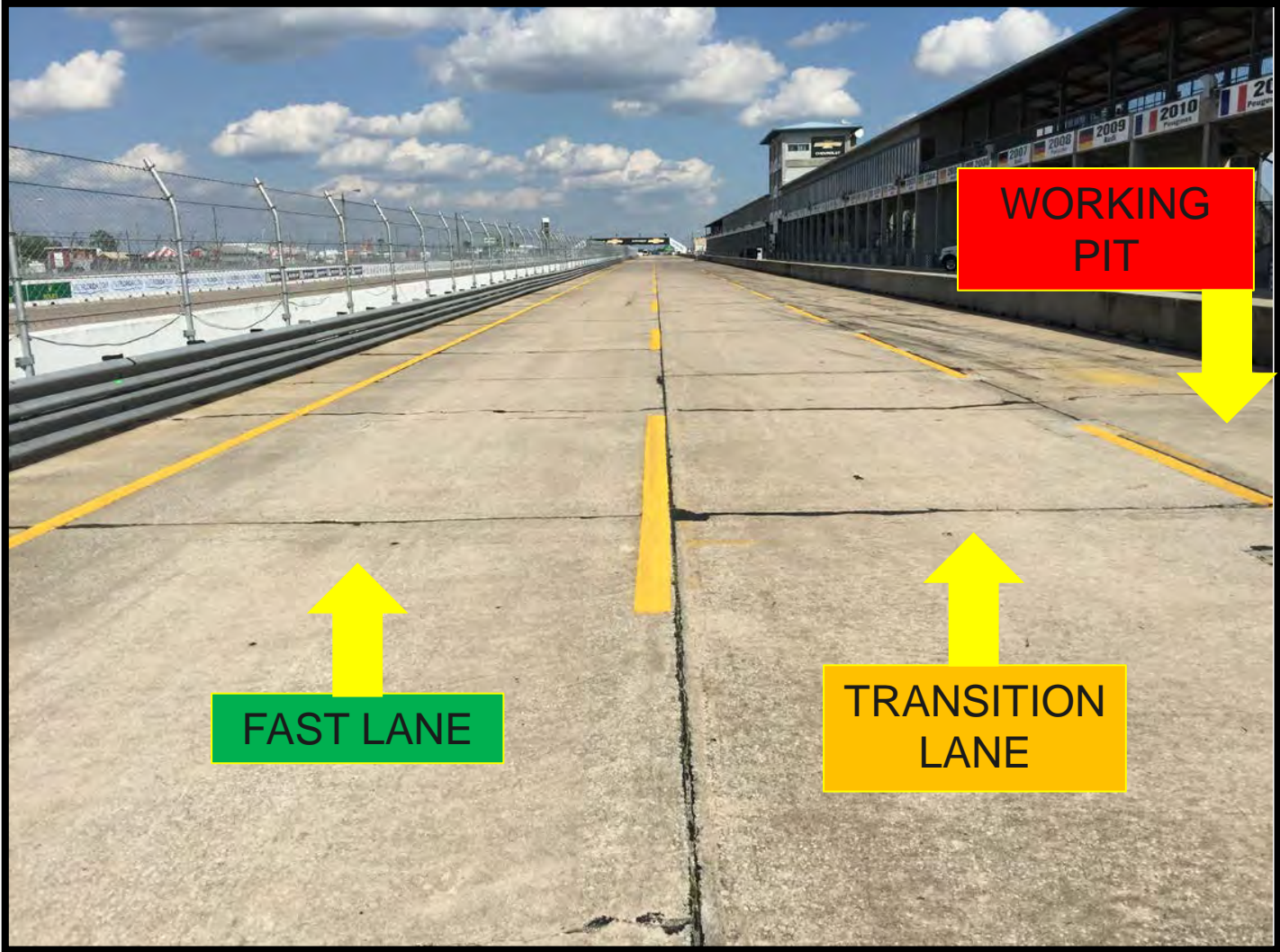


PIT CLOSED REPEATER LIGHT

- Positioned on pit wall for Team Managers



PIT LANE PROTOCOL



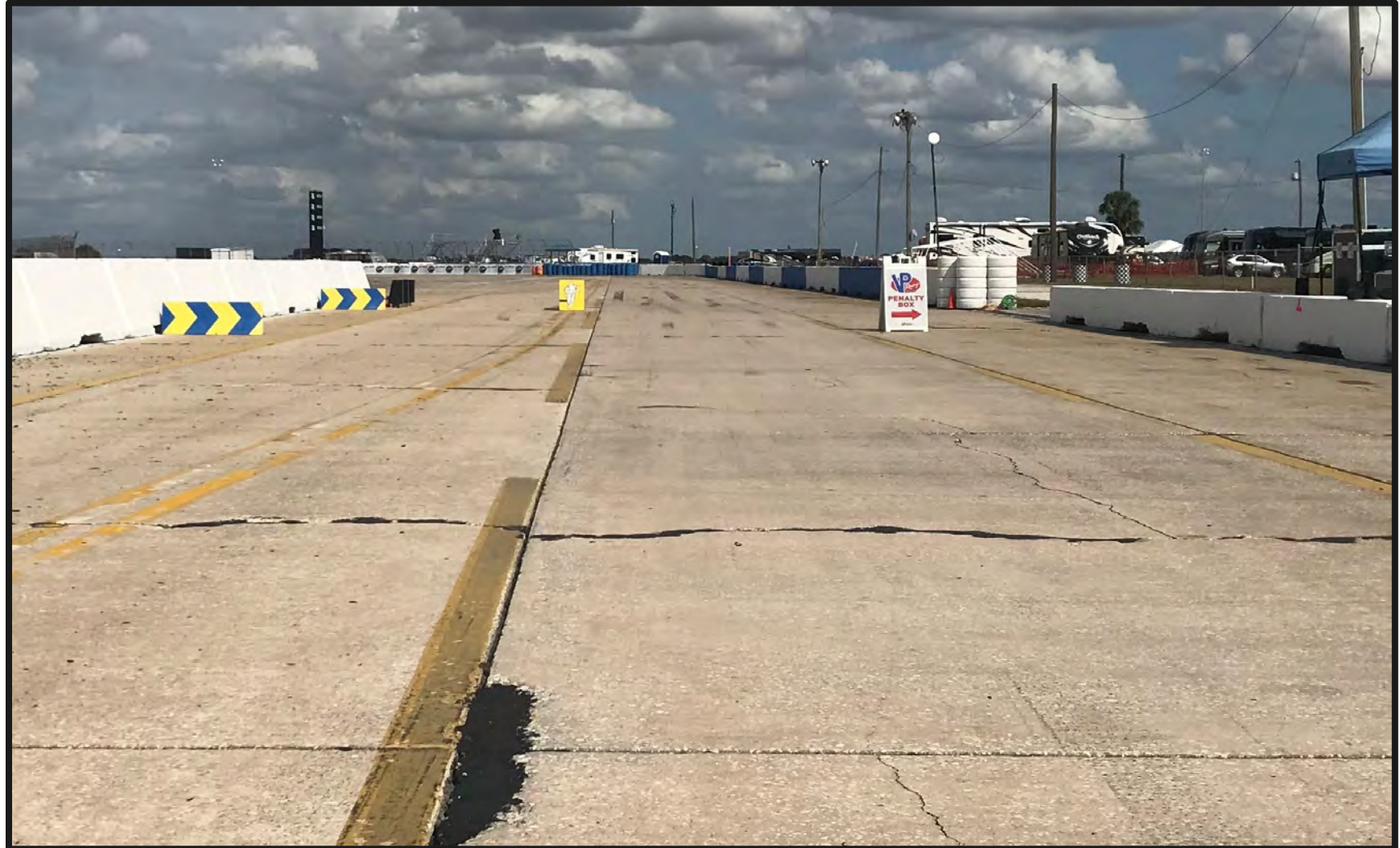
PIT EXIT CLOSED

- Pit Exit closed light



PIT EXIT / PENALTY BOX

- Pit Exit / Penalty Box



PIT EXIT MERGE

- Cars exiting the Pit Lane must remain two wheels to the right of the yellow merge line until it ends.
- Merge safely into Turn 1.
- Respect the speed difference of those already on track.



ORANGE OVERLAPS

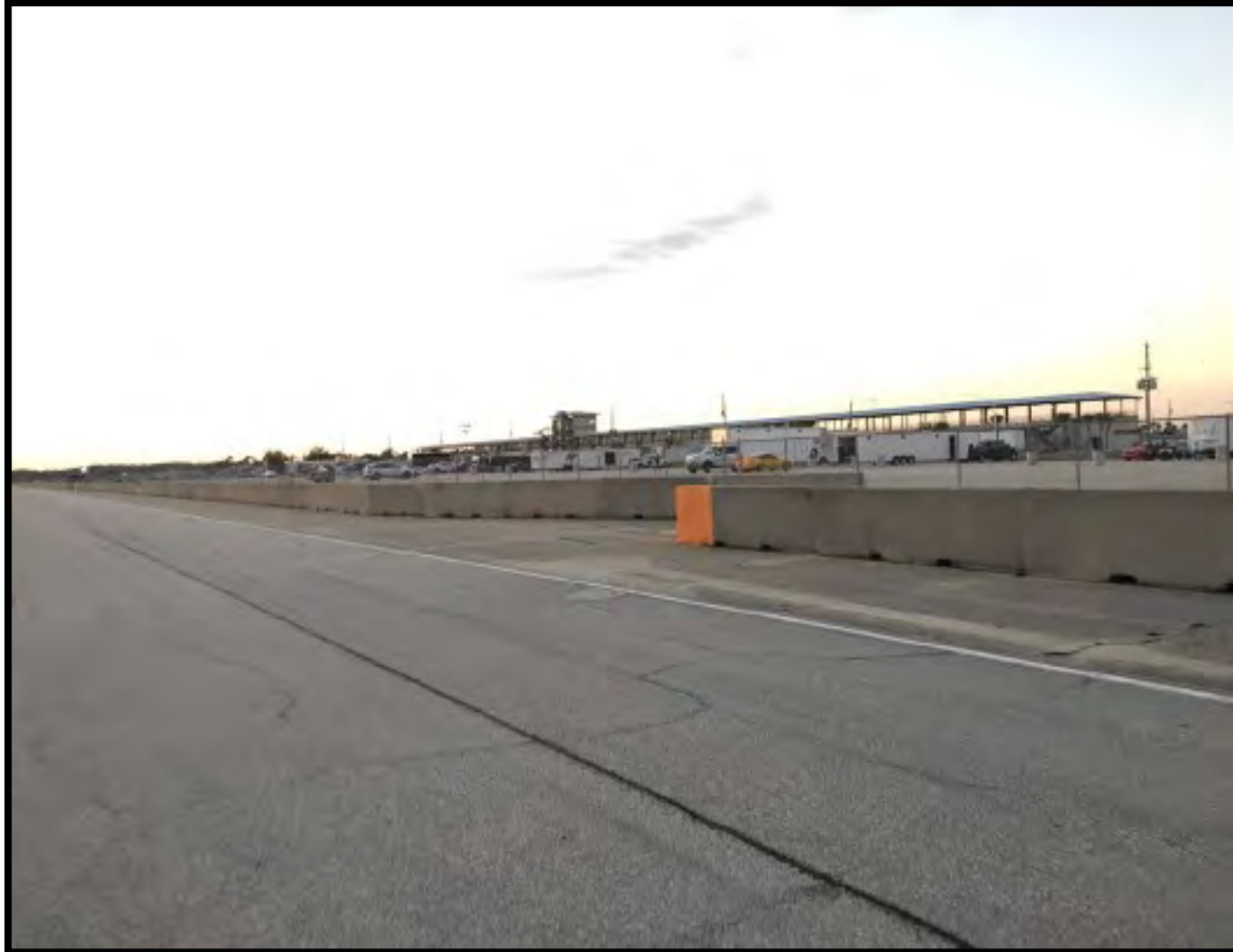
- Overlaps are locations to remove disabled Cars from the track.
- Overlaps are marked throughout the circuit and indicated on the official Track Map.
- Competitors with disabled Cars on track are requested to use the overlaps whenever unable to continue to the pits.

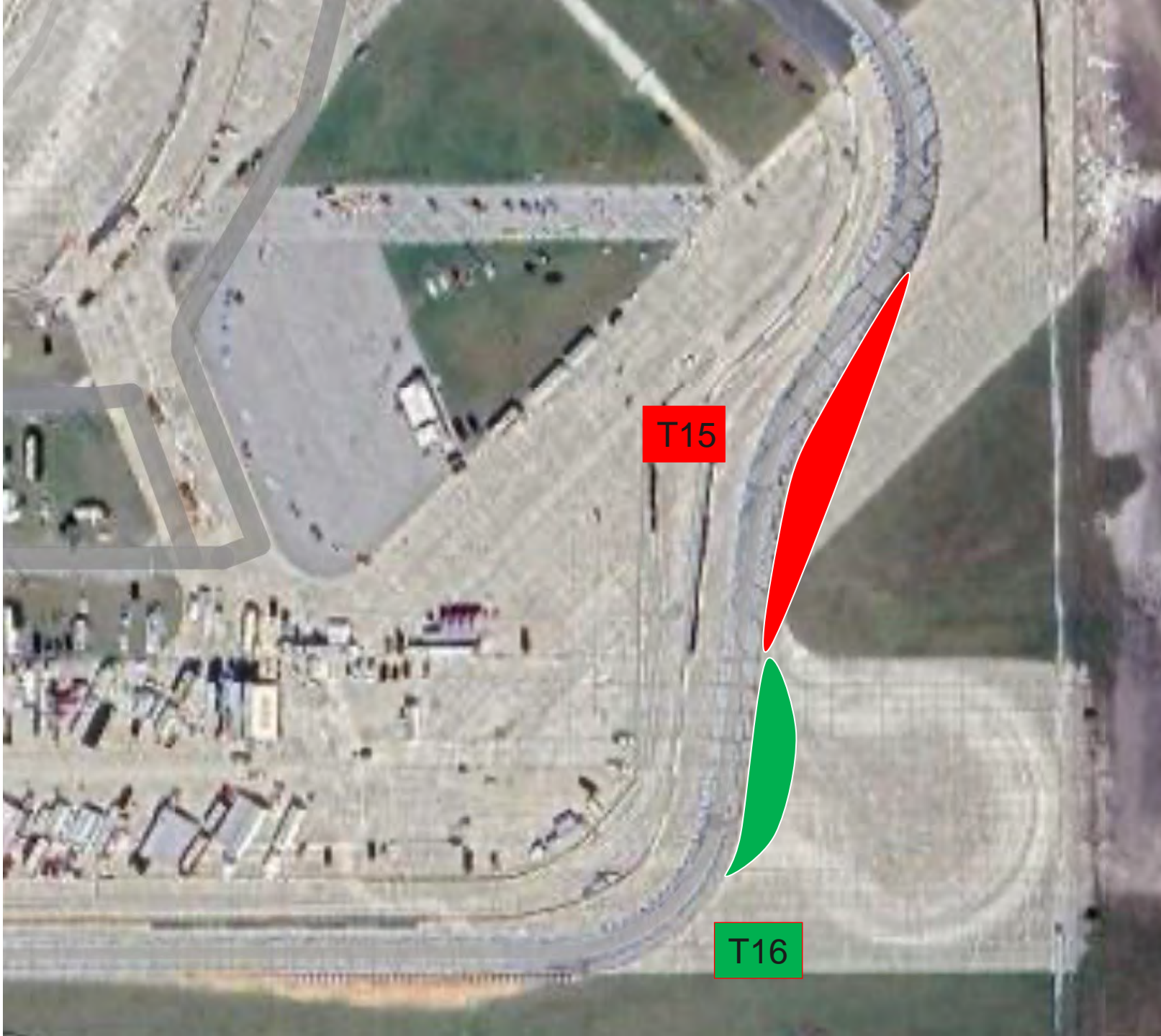


ORANGE OVERLAPS



ORANGE OVERLAPS





T15

T16

RESTART ACCELERATION ZONE

- Restart Acceleration Zone is Turn 17



RESTART ACCELERATION ZONE

- Restart Acceleration Zone is Turn 17



LOCAL YELLOW LIGHT AT TURN 17

- Used to signify a local yellow
- Solid Yellow Light
- Not part of the IMSA Yellow Light System



LOCAL YELLOW LIGHT AT TURN 17

- Used to signify a local yellow
- Solid Yellow Light
- Not part of the IMSA Yellow Light System



RACE START

- **Two (2) Formation Laps**
- **Safety Car(s) enter track using full Pit Lane exit**
- **Split Start – Prototype and GT (Two Safety Cars)**
- **Pack up first time by / Pair up exiting Turn 14 second time**
- **Stay with Safety Cars**
- **Safety Cars enter Pits**
- **Acceleration point**
 - **Polesitters to maintain pace of the Safety Car to acceleration point**
- **Column Passing and Lane Changes are prohibited prior to the start line**
- **Jump/False start Reviews**
 - Gaps
 - Timed/Early Acceleration
 - Out of Line
 - Column Passing

FULL COURSE YELLOW (STANDARD)

- **Pits Closed**
- **Full Course Yellow (FCY lights and double yellow flags)**
- **Overall Leader – Safety Car speed**
- **Safety Car dispatched from Turn 1 to Overall Leader**
- **Pass-Around**
- **Pits open - Prototype only**
- **Pits open - GT only**
- **Final Wave-By**
- **Class Splits (category, then class)**
- **Class Split complete when Safety Car lights are extinguished and competitor exits Turn 16**
- **Restart**
- **Emergency service Cars must D-T**
- **Standard FCY not in effect during the last 30 minutes of a Race**
- Emergency service fuel Cars must fuel at first opportunity
- Failure to perform emergency service drive-through: Stop plus 10 seconds
- More than emergency service taken: Stop plus 60 seconds

FULL COURSE YELLOW (SHORT)

- **Pits Closed**
- **Full Course Yellow (FCY lights and double yellow flags)**
- **Overall Leader – Safety Car speed**
- **Safety Car dispatched from Turn 1 to Overall Leader**
- **Pass-Around**
- **Pits remain closed**
- **Class Splits (category, then class)**
- **Class Split complete when Safety Car lights are extinguished and competitor exits Turn 16**
- **Pits open (all classes) after all Cars pass Pit-In, coming to the restart**
- **Restart**
- **Emergency service Cars must D-T**
- Emergency service fuel Cars must fuel at first opportunity
- Failure to perform emergency service drive-through: Stop plus 10 seconds
- More than emergency service taken: Stop plus 60 seconds

ON TRACK

- **RESTARTS**
- **LOCAL YELLOWS**
- **BLOCKING / DEFENDING INCREASE RESPONSIBILITY**
 - Proactive vs. Reactive
- **CONTACT**
 - Responsibility
 - Class Racing
 - Multi-class incidents
- **COEXISTENCE**
 - Awareness
 - Coexist

RACE CONTROL

- **COMMUNICATION**

- Radio Communications
- Race Control Notification System (RCNS)/Instant Messenger
 - Race Control
 - Timing & Scoring
 - Technical Department

- **REVIEW PROCESS**

- Data
- Video
- All incidents are reviewed for the purpose of apportioning individual responsibility that may result in penalties. Race how you expect to be raced and acknowledge that this is the second-longest race of the season and there are numerous new competitors. Best of luck and make it a great race!

MISCELLANEOUS REMINDERS

- **TRACK WALK**
 - Scheduled at all IMSA Events
 - Walk only
 - Take time to view items on official track map
- **Pairing Up for Race Starts**
- **Emergency Service**
 - Dry Type Tires to Wet Type Tires Permitted
- **Pit Lane Equipment without Crew Member**
- **Pit Lane Team Rep as Manufacturer's Rep**
 - Inform Pit Staff
 - Identification

MISCELLANEOUS REMINDERS

- **Pass-Arounds, Final Wave-By and Class Splits are two-phase procedures.**
 - PREPARE
 - COMMENCE
 - Competitors who fail to prepare and/or commence when the commands are communicated from Race Control and subsequently lose positions will not be given positions back.
- **Multi-Class Racing**
 - Performance Differences
 - Downforce
 - Straight-Line Speed
 - Surprises
 - Interactions
 - Remain Predictable
- **Driver “Bandwidth”**

2025 CHANGES

- Red Flag Drive Time
 - If reduced to zero, all Drivers MUST still drive
- Helmet Cams
 - Only one specific Homologated Camera Permitted
 - See Regs
- Non-Functioning Transponder or Driver ID
 - Must Repair
 - Additional Drive Through for failure to comply
- Red Flag during practice
 - Loss of Fast Lap from qualifying
 - Responsibility
- Pairing Up for Race Start

SPORTING REGULATIONS REMINDER

16.1 PRIVATE IN-CAR-CAMERAS (ICC)

- May be permitted **only after** the expressed approval of IMSA, and any footage gathered from such private ICC shall **only** be for internal use by Team and Driver
- ICC installation (locations/primary & secondary retention systems, etc.) must be approved by Paul Walter, pwalter@imsa.com
- Private ICC installation on Driver helmet prohibited (except if meeting FIA Homologation criteria for helmets listed in Art. 21.)
[This is a specific helmet camera from a specific approved vendor only]
- Live streaming/posting of any recorded material is prohibited
- Any use of the private ICC footage by sponsors or any other third party is prohibited

FIRST VIOLATION

- \$5,000 Entrant Fine, loss of ten (10) Team championship points and ten (10) Driver championship points per Driver in Car
 - Immediate removal of any prohibited media from visibility
- **Second and subsequent violation(s)** - \$5,000 Entrant Fine, loss of thirty (30) Team championship points and thirty (30) Driver championship points per Driver in Car
 - Immediate removal of any prohibited media from visibility



MOBIL 1 TWELVE HOURS OF SEBRING

SATURDAY, MAR 15 AT 10:00AM ET [peacock](#) [YouTube](#)





Let Racing Force help you plan for your upcoming racing season with OMP, Bell and Racing Spirit Products!

Racing Force is one of IMSA's longest standing Partners, with more than 15 years as one of IMSA's Proud Partners.

For 2025 Racing Force is offering a **30% discount** on all Racing Force Products to IMSA competitors and teams. This discount can be applied by confirming your participation in an IMSA sanctioned series with the Racing Force Team.

To order Racing Force Products or for more information, please contact:

Kenji Yrey

Custom Products & Logistics Coordinator

Kenji.yrey@racingforce.com

786-479-4722





RACING OPTICS®

Looking for windshield tear-offs?

Racing Optics, a Proud Partner of IMSA, is the industry leader in multilayer, laminated tear-offs, and is proud to offer their product and installation services to IMSA teams and competitors.

For those looking to purchase product away from the track, Racing Optics is excited to offer IMSA teams and competitors a special **20% off promo code** for Racing Optics windshield tear-offs on Pro-Tint's [online shop](#).

Use code **"IMSA20"** at checkout to receive your discount.

To schedule an install or for more information, please contact:

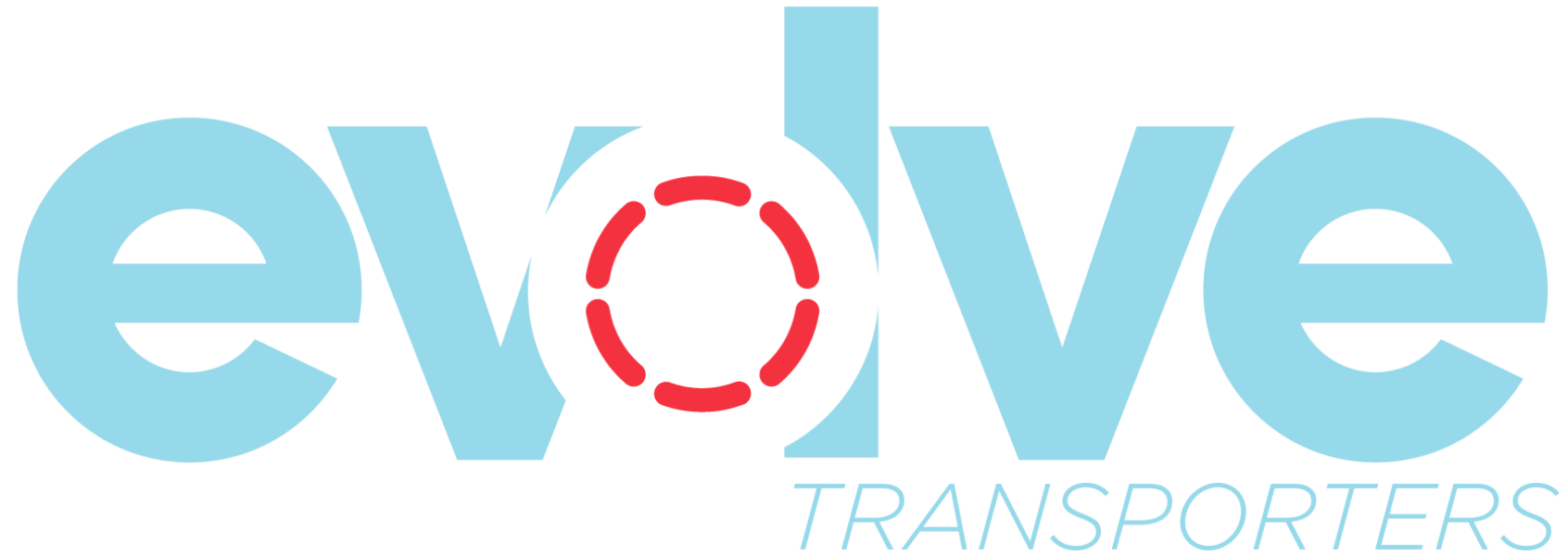
Chris Colton

Applications Engineer / Sponsorships & Corporate Relations

C.Colton@racingoptics.com

980-439-6485





Preventative Maintenance | Repairs | Evaluations | Upgrades

To schedule at-track support, please email:

tracksupport@evolvetransporters.com



STAY FROSTY® PERFORMANCE COOLANTS



Stay Frosty® Race Ready is a proprietary VP Racing Fuels coolant formulated for high-compression, high-heat racing engines. It contains a specialized blend of heat transfer agents that drastically improve coolant's ability to transfer heat away from high temperature cylinder heads. Temperatures of engines are reduced by up to 30°F compared to conventional glycol-based coolant.

100% Water-Based Glycol-Free Formula

Reduces Engine Temps Up to 30°F

Blended with Chemically Stable Reverse Osmosis Water

Ready-To-Use – Just Pour In (Also Available in Clear)



OFFICIAL PERFORMANCE COOLANT

***Lower Temps.
More Power.***

