

# PORSCHE CARRERA CUP NORTH AMERICA

## CIRCUIT OF THE AMERICAS

DRIVER & TEAM MANAGER MEETING

**PORSCHE**

---

**CARRERA CUP  
NORTH AMERICA**

# SERIES CONTACTS



Christoph Von Liel	One Make Manager	(424) 482-6197
Ryan Anselmo	Series Manager	(424) 339-9432
Mario Brown	Technical Support	(470) 952-9509
Michael Yanase	Parts Support	(678) 938 1310
Jeremy Sundt	Series Support	(470) 419-9489

Randy Buck	Race Director	(415) 298-7018
Duane Sampson	Director, Single Make	(386) 285-7021
Austin Farr	Coordinator, Single Make	(386) 293-1702
Cory Posocco	Logistics & Event Ops	(386) 566-8313
Holly Langer	Paddock Setup	(386) 871-0241
Paul Walter	Sporting	(614) 598-6783
Scott Ellison	Technical	(734) 621-9130
Johnny Knotts	Pit Lane Supervisor	(813) 763-4669
Gayle Burnham	Administration	(386) 235-7800
David Pees	Timing & Scoring	(386) 308-8866
Ryan McLean	Medical Liaison	(386) 285-6913
Roy Spielmann	Track Services	(414) 702-0905
Robert Bosworth	Safety & Security	(704) 728-8087

# IMSA RESOURCES

IMSA COMPETITOR LANDING PAGE:

<https://www.imsa.com/competitors/>

- Team Portal
- Event Information
- Rules & Regulations
- Marketing & Branding Page

IMSA NOTICE BOARD:

<http://results.imsa.com/>

- Driver & TM Briefings
- Entry Lists
- Minute by Minute
- Timing Results
- Penalties

## WELCOME TO THE 2023 IMSA COMPETITION LANDING PAGE

FOR ALL IMSA COMPETITOR INFORMATION PLEASE CLICK THE HAMBURGER MENU AT THE TOP LEFT OF THIS PAGE.

The one-stop shop for everything you'll need to get your team on track.

[2023 Team Portal](#)

[2023 Team Portal](#)

[2023 Season Test Event Information](#)

[Media Center](#)

[IMSA Marketing and Branding Resources](#)

[Race Results](#)

[Federal Checkbook Pass Benefits](#)

[Special Michelin Fleet Pricing for Commercial/Light Truck Tires and Services - For All IMSA Members - 8 Tires Minimum Purchase](#)

[Special Michelin Discount Program for Passenger Tires - For All IMSA Members](#)

[IMSA Proud Sponsors](#)

### LATEST EVENT INFORMATION



#### Mobil 1 Twelve Hours Of Sebring

Mar 15 to Mar 18

Sebring, FL

Resources:

[Provisional Schedule & SR 1/18/23](#)

IMSA NOTICEBOARD

SEASON: 2023 | EVENT: Honda USA - Daytona International Speedway

ROLEX 24 - DAYTONA INTERNATIONAL SPEEDWAY, SEASON 2023

- OFFICIAL SCHEDULE - [VIEW](#)
- PACE ASSIGNMENTS - [VIEW](#)
- TRACKING SECTOR MAP - [VIEW](#)
- TRACK MAP - [VIEW](#)
- DRIVER BRIEFINGS
  - IMSA DRIVER BRIEFING - [VIEW](#)
  - IMSA DRIVER BRIEFING - [VIEW](#)
  - IMSA DRIVER BRIEFING - [VIEW](#)
- CHANNEL LIST
  - ROLEX 24 CHANNEL LIST - [VIEW](#)
- ENTRY LIST
  - IMSA PIR RACE ENTRY LIST - [VIEW](#)
  - IMSA PIR RACE ENTRY LIST - [VIEW](#)
  - IMSA PIR RACE ENTRY LIST - [VIEW](#)

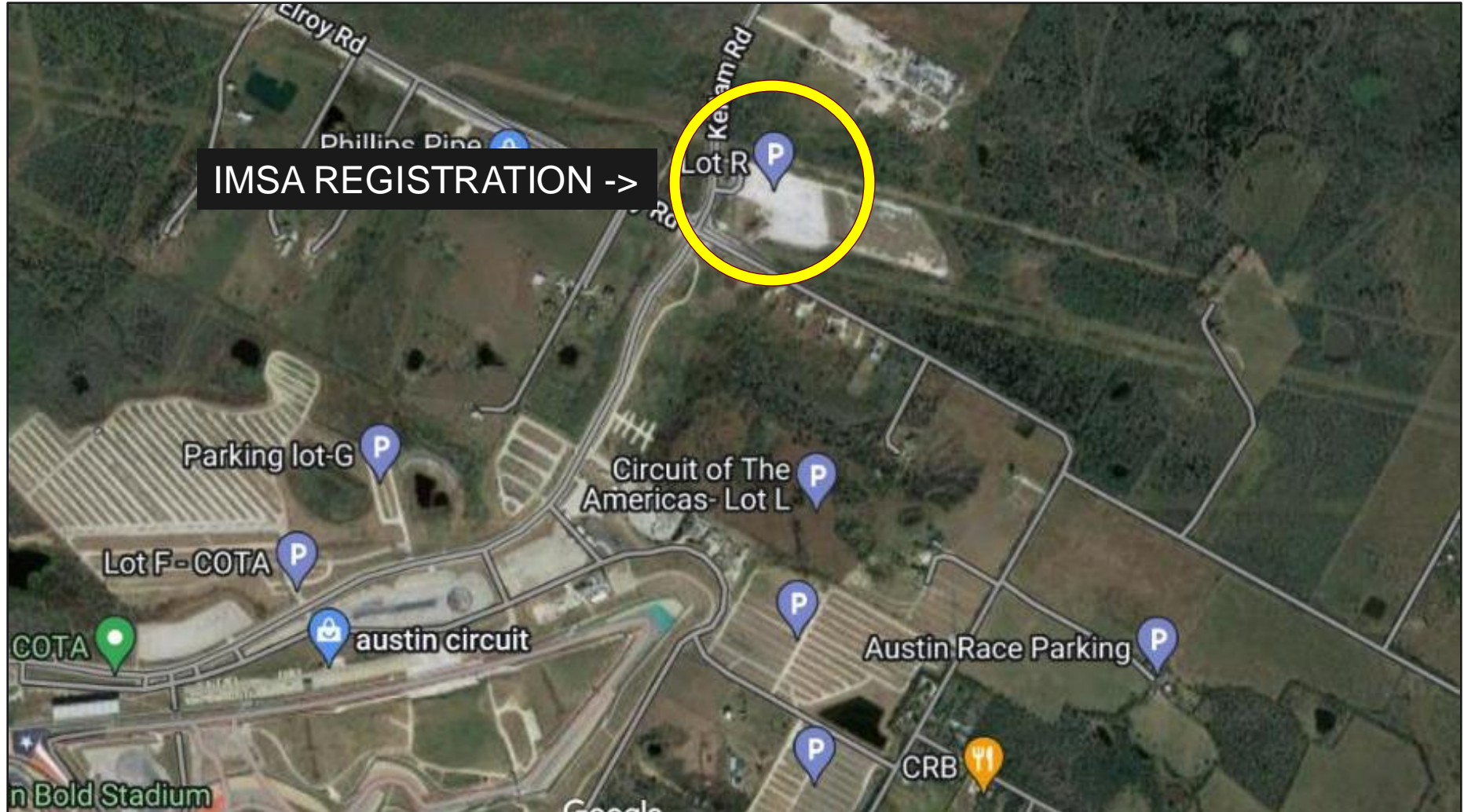
# REGISTRATION

## IMSA REGISTRATION OCTOBER 17<sup>th</sup> through OCTOBER 19<sup>th</sup>

Thursday, 10/17 7:00 AM - 3:00 PM  
Friday, 10/18 8:00 AM - 3:30 PM  
Saturday, 10/19 8:00 AM - 3:00 PM

### Notes

- IMSA Registration will be located in Lot R in the Accreditation Trailer
- F1 credentials can be collected by the teams at the IMSA Registration Office starting on Thursday, October 17th at 7:00 am.





# » TO IMSA TEAM PARKING

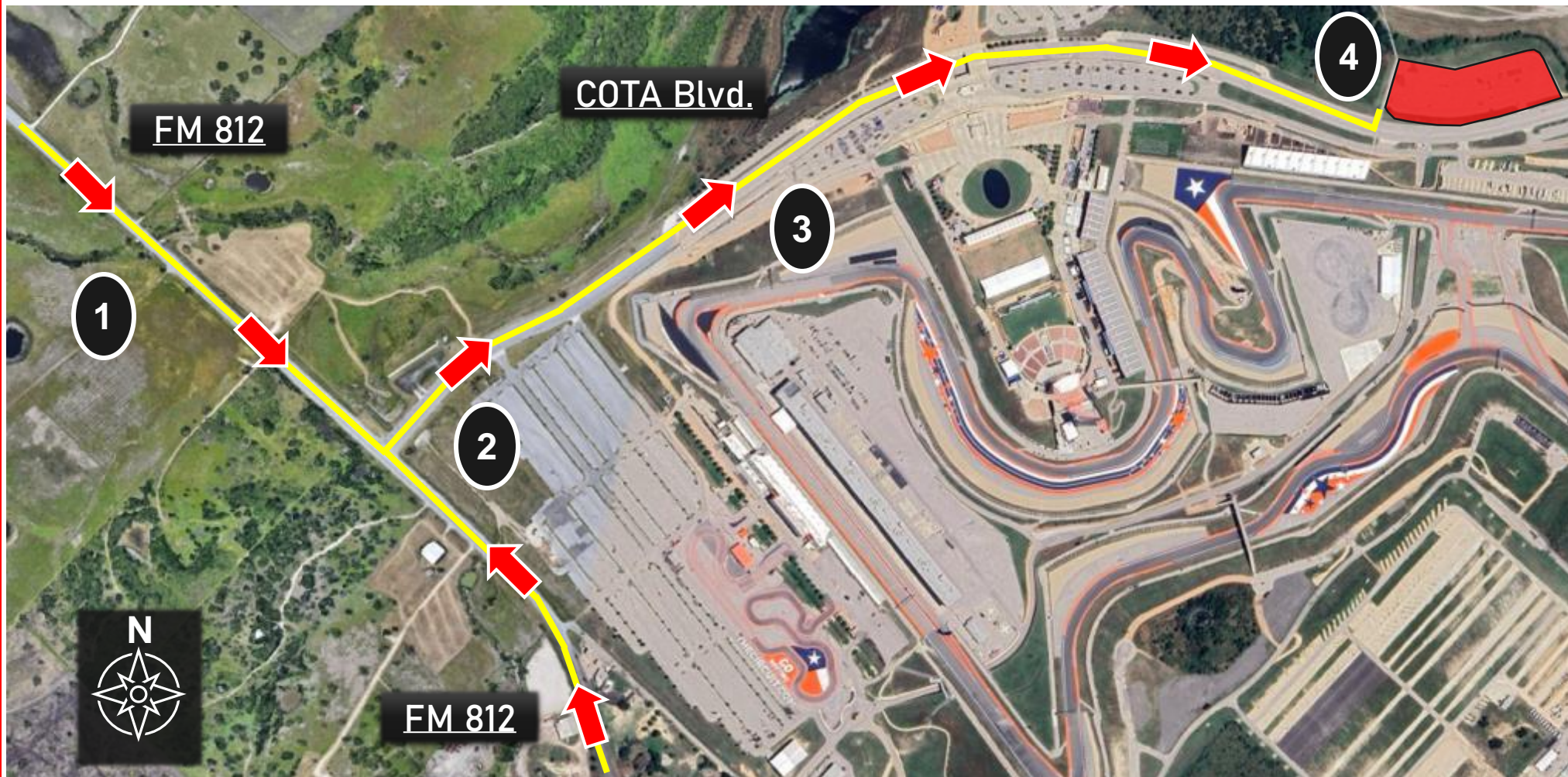


## Directions

1. Take FM 812 to COTA Blvd.
2. Turn onto Circuit of the Americas Blvd.
3. Follow COTA Blvd. to Lot E
4. Proceed to IMSA Team Parking (red shaded area)

## Notes

- 9201 Circuit of the Americas Blvd. Austin, TX 78617
- IMSA hang tags NOT valid, must pick up a parking pass from PMNA





# » CARE CENTER LOCATION



## Notes

- Care Center located next to Helipad at Pit Exit

## Care Center Hours

- Thu. 10/17 7:00 AM – 3:00 PM
- Fri. 10/18 8:00 AM – 3:30 PM
- Sat. 10/19 8:00 AM – 3:00 PM



# BRIEFINGS

---

## **DRIVER AND TEAM MANAGER BRIEFING**

- Thursday, October 17 3:30 pm
- Located in PENFED Driver's Lounge

## **DRIVER AND TEAM MANAGER RACE BRIEFING**

- Saturday, October 19 11:30 am
- Located at IMSA Technical Trailer

# MERG

---

## **DURING EVENT USES**

- Discontinue participation in Event before Race
- Register Joker tires

## **AFTER QUALIFYING**

- Engine Change
- Request to change one (1) tire
- Request to change more than one (1) tire

## **DURING RACE**

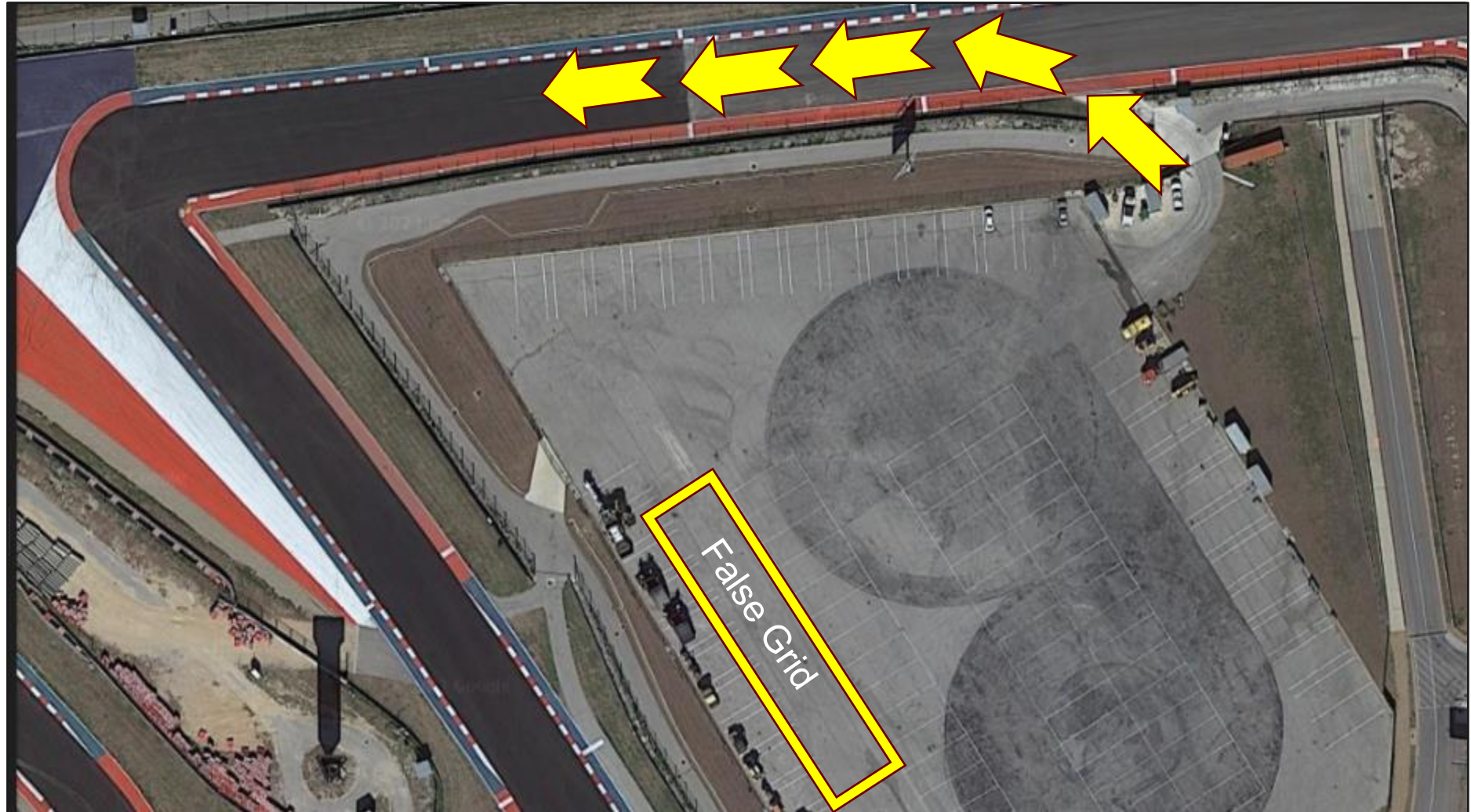
- Retire from Race



# TO PIT LANE – RACE CARS

## TRAFFIC FLOW – PCCNA PADDOCK TO TRACK (RACE CARS)

- Stage vehicles in False Grid Area
- Enter Track via Turn 12 opening and follow directions from IMSA Official





# TO PIT LANE – PIT EQUIPMENT

## TRAFFIC FLOW – PCCNA PADDOCK TO PIT LANE (PIT EQUIPMENT)

- Enter the access road on the southeast corner of paddock
- Proceed along access road to pit entry area

**Path is for pit equipment and tuggers only, no race cars permitted**



# PIT LANE

- All pit boxes are indicated by corresponding F1 garage assignments similar to Miami
- Pit boxes are 20 ft

2024 COTA PCCNA Pit Lane (All Pit Boxes are roughly 20 Feet)

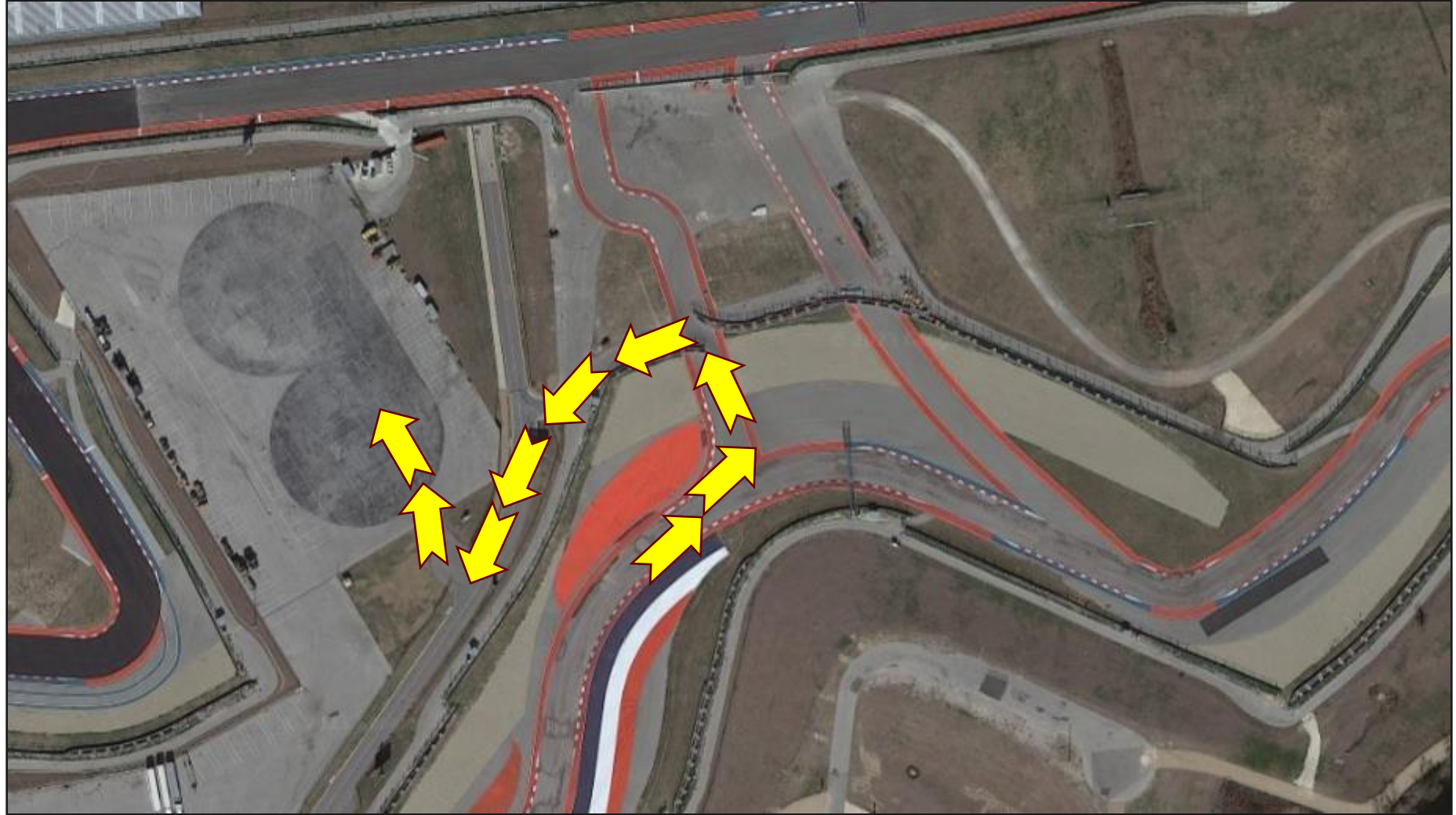
Car #	PCCNA Team Name	F1 Garage
<b>PIT OUT</b>		
<b>PENALTY BOX</b>		
24	Kellymoss	Blue Aramco/Fire Equipment
8	Kellymoss	Hulkenberg
85	Kellymoss	Magnussen
99	Kellymoss	MoneyGram Haas
65	Kellymoss	Fire Exit Sign
23	Kellymoss	No Smoking Sign
68	Kellymoss	Bottas
57	Kellymoss	Zhou
13	Kellymoss	Stake F1 Team
80	Kellymoss	Lawson
98	JDX Racing	Tsunoda
9	JDX Racing	Fire Exit/Grate
4	JDX Racing	Gap
82	JDX Racing	Albon
70	JDX Racing	Colapinto
78	Topp Racing Performance	Williams F1
77	Topp Racing Performance	Ocon
56	Topp Racing Performance	Gasly
12	Topp Racing Performance	Alpine F1
88	Baby Bull Racing	No Smoking Sign
44	Baby Bull Racing	AMR F1
15	ACI Motorsports	Alonso
2	ACI Motorsports	Stroll
84	ACI Motorsports	Plastri
55	ACI Motorsports	Norris
19	ACI Motorsports	McLaren F1
5	MOMENTOP FMS Motorsport x RGB Racing	Fire Exit Sign
91	MOMENTOP FMS Motorsport x RGB Racing	Ferrari HP
27	MOMENTOP FMS Motorsport x RGB Racing	Ferrari HP
64	Era Motorsport	Leclerc
37	Era Motorsport	Sainz
74	Era Motorsport	Hamilton
45	Ruckus Racing	Mercedes AMG F1
14	GMG Racing	Fire Exit Sign
32	GMG Racing	No Smoking Sign
10	MGM	Oracle Red Bull F1
<b>PIT IN</b>		



# TO PADDOCK – RACE CARS

## TRAFFIC FLOW – TRACK TO PCCNA PADDOCK (RACE CARS)

- Slow and exit track at Turn 5a opening
- Proceed down access road
- Enter PCCNA Paddock



# EXITING TRACK POST SESSION

After taking the Checkered Flag, all cars must exit the track at Turn 5a driver's left

**Slow down and respect any marshals or equipment that may be on track to direct cars to the exit at turn 5a**

**Yellow flags at T3-5**

Checkered Flag position (1<sup>st</sup> flag post) vs initial start Green Flag position (2<sup>nd</sup> flag post)

All other Green Flag use will be at 1<sup>st</sup> flag post (Restarts)





# EXITING TRACK POST SESSION

After taking the Checkered Flag, all cars must exit the track at Turn 5a driver's left

**Slow down and respect any marshals or equipment that may be on track to direct cars to the exit at turn 5a**

**Yellow flags at T3-5**

Checkered Flag position (1<sup>st</sup> flag post) vs initial start Green Flag position (2<sup>nd</sup> flag post)

All other Green Flag use will be at 1<sup>st</sup> flag post (Restarts)





# EXITING TRACK POST SESSION

After taking the Checkered Flag, all cars must exit the track at Turn 5a driver's left

**Use caution when negotiating return road**

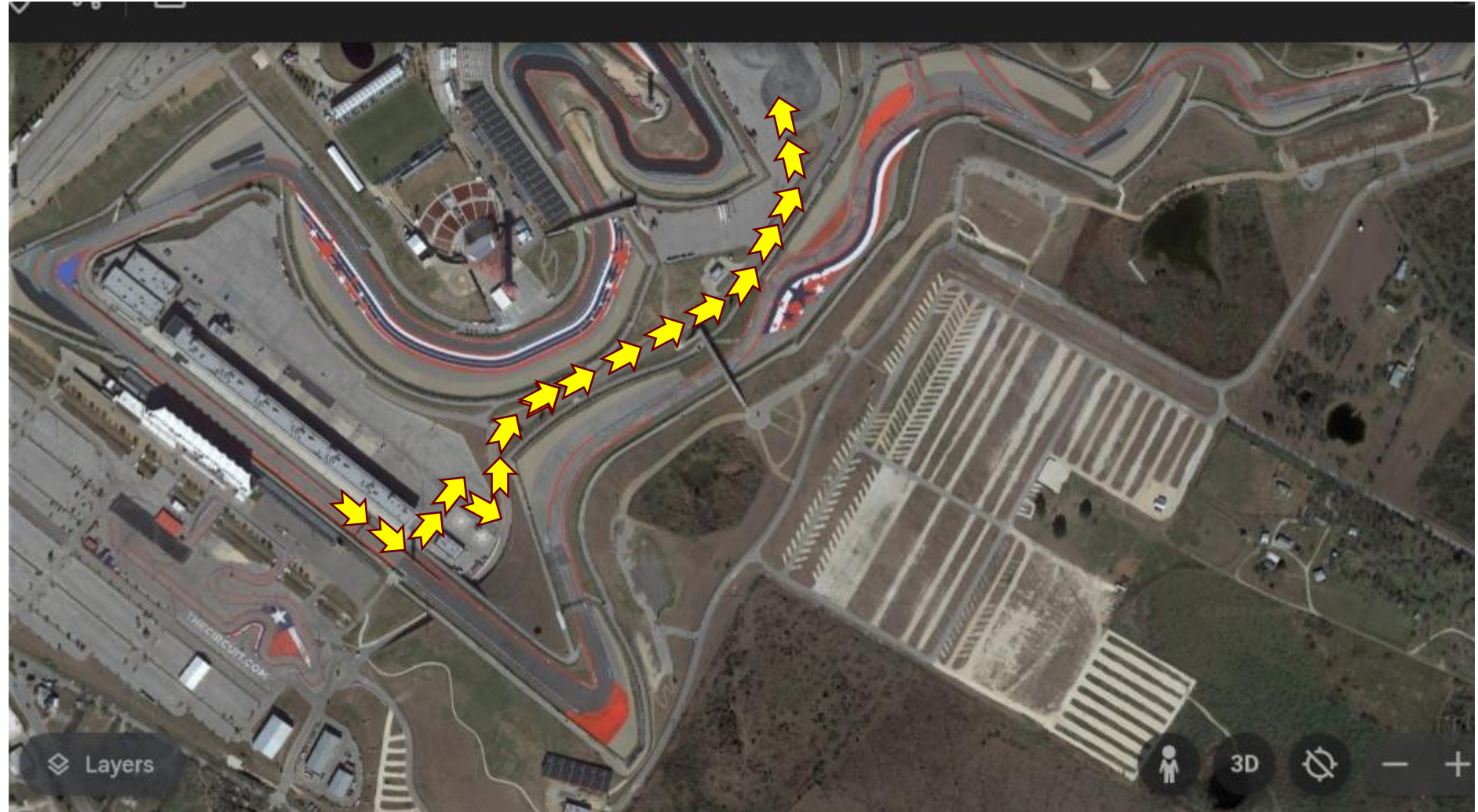


# TO PADDOCK – PIT EQUIPMENT

## TRAFFIC FLOW – TRACK TO PCCNA PADDOCK (PIT EQUIPMENT & TUGGERS)

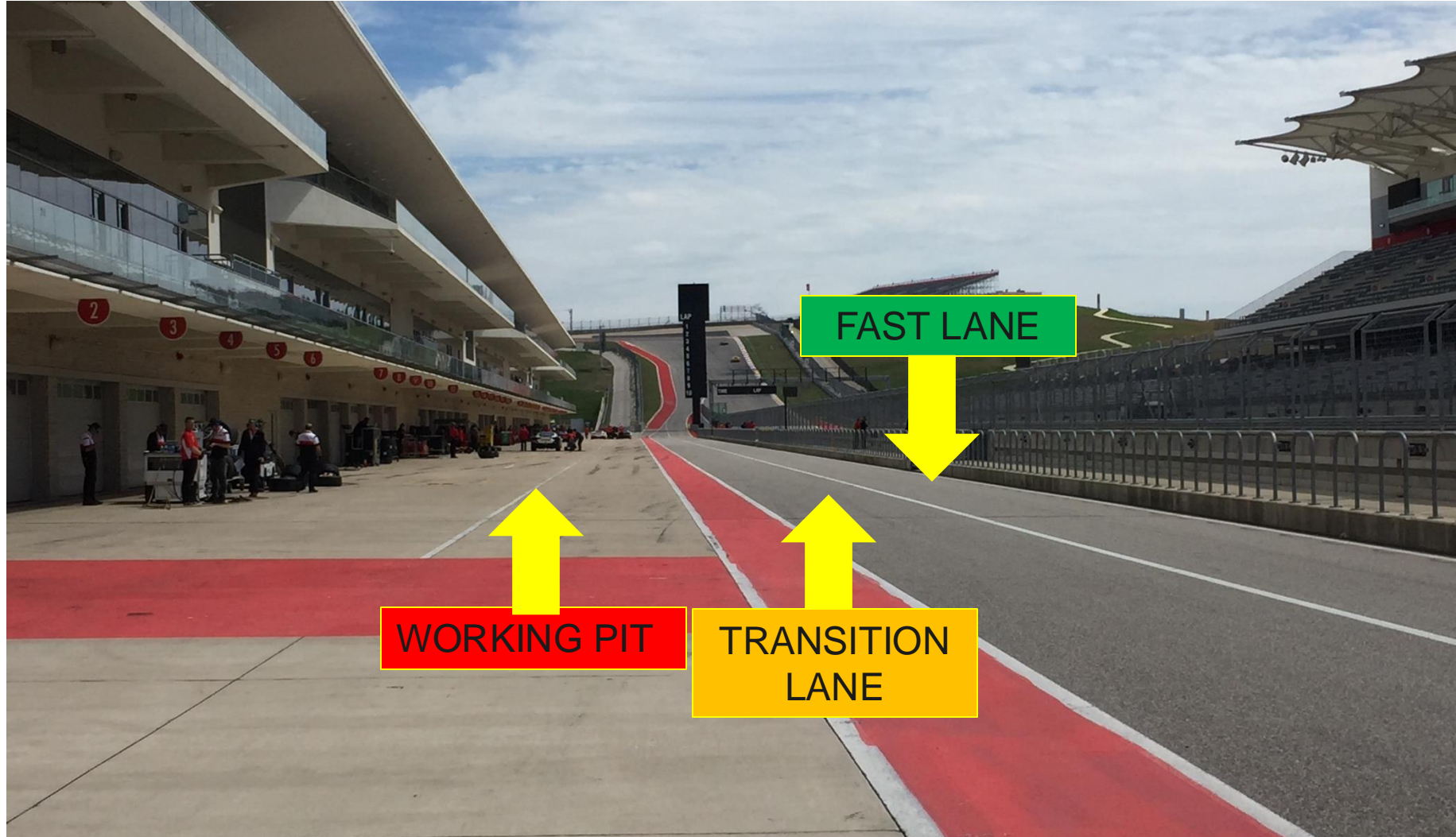
- Enter access road at end of pit lane
- Proceed along access road to PCCNA paddock

**Route is for pit equipment and tuggers only, no race cars permitted (unless being towed)**





# PIT LANE PROTOCOL

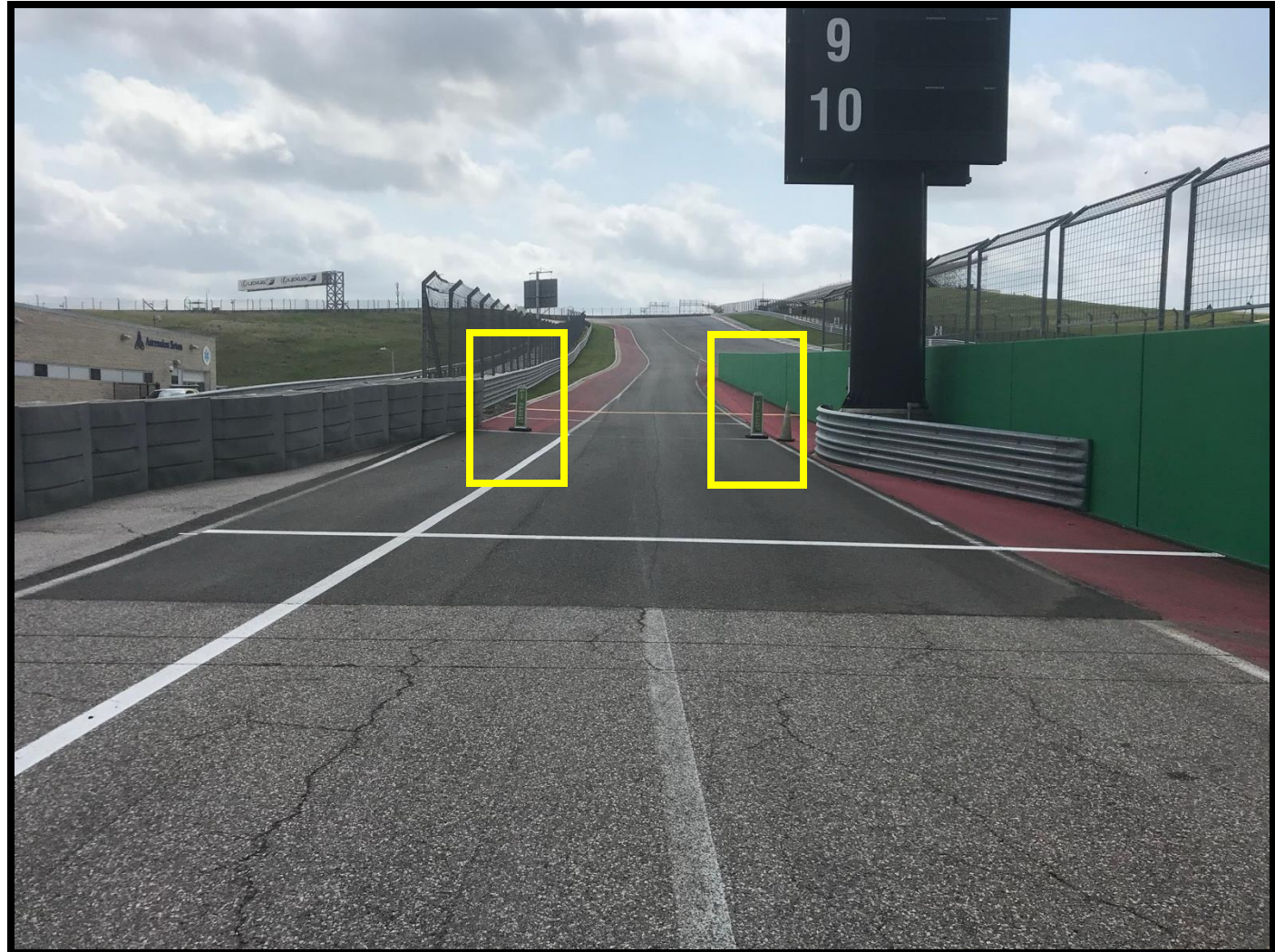




# PIT EXIT / PIT LANE SPEED ENDS

Pit Lane speed limit ends at  
Green pylons

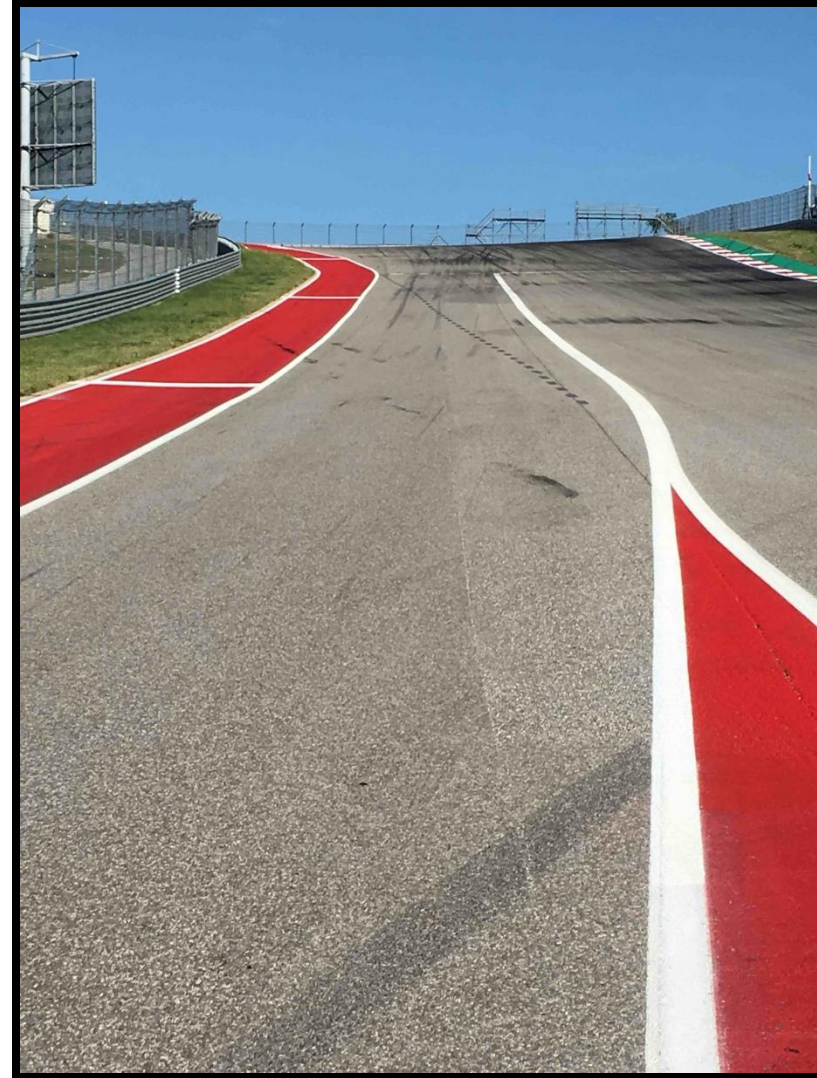
Penalty Box located driver's  
left at Pit Exit



# PIT EXIT

Cars exiting the Pit Lane must remain FOUR wheels to the left of the blend line until it ends in Turn 1

Cars on track must respect the speed difference of those in the Pit Exit merge lane





# TRACK LIMITS (CORNER EXITS)

All four (4) tires outside the GREEN and white painted surface AT THE EXIT OF CORNERS is outside track limits



# SHORTCUT (CORNER APEXES)

All four (4) tires inside the **RED and WHITE CURB** AT THE APEX OF CORNERS (NOT green and white paint) is outside track limits

Orange apex bumps are NEW (higher than test)





# PIT LANE SPEED LIMIT

Pit Lane speed limit begins at Red pylons (around the corner this year)



# ORANGE OVERLAPS

Overlaps are marked throughout the circuit and are indicated on the Official Track Map

Competitors with disabled cars are requested to exit at these locations when unable to continue to the pits





# ORANGE OVERLAPS

Overlaps are marked throughout the circuit and are indicated on the Official Track Map

Competitors with disabled cars are requested to exit at these locations when unable to continue to the pits



# TRACK SERVICES

## COTA GP CHASE VEHICLES

### ON TRACK ASSISTANCE

- Communication with Track Services Medic
- Neutral and power shut off
- Follow direction on scene Track Services
- Maintain a safe speed and distance when passing on track incidents with Track Services team members on the scene





# ON-TRACK REVIEW

---

## Road Atlanta Review

- One Full Course Caution, otherwise very good!

## COTA Specifics

- Turn 1 starts
- Turn 3 speed
- Turn 11 brake zone
- Turn 12 brake zone - speed/braking point
- Turn 11,15, 19, 20 Track Limits

# PORSCHE PENFED DRIVER'S LOUNGE

**PORSCHE**  
CARRERA CUP  
NORTH AMERICA

**PENFED**  
CREDIT UNION

## PORSCHE PENFED DRIVER'S LOUNGE

### Circuit of the Americas

**DATE:** October 18 - 20, 2024

**FRIDAY:** Breakfast 7:00 am – 10:00 am | Lunch 12:00 pm – 3:00 pm

**SATURDAY:** Breakfast 7:00 am – 10:00 am | Lunch 11:30 am – 2:30 pm | Dinner 4:30 pm – 7:30 pm

**SUNDAY:** Breakfast 7:00 am – 10:00 am | Lunch 12:00 pm – 3:00 pm

**LOCATION:** Porsche Penfed Driver's Lounge

**RSVP:** Please register your guest count incl. drivers, team members and guests by the latest on Thursday, October 3, 2024.

**YOKOHAMA** **Mobil 1** **PENFED CREDIT UNION** **TAGHeuer** **rafa** **ONLY Golfers**

**Exxon Mobil Synergy Supreme** **EBOOST** **PAGID RACING** **APEX** **sparco** **IMSA**



# PORSCHE CARRERA CUP NORTH AMERICA

## CIRCUIT OF THE AMERICAS

THANK YOU

**PORSCHE**

---

**CARRERA CUP  
NORTH AMERICA**

# PORSCHE CARRERA CUP NORTH AMERICA

## CIRCUIT OF THE AMERICAS

DRIVER & TEAM MANAGER RACE MEETING

**PORSCHE**

---

**CARRERA CUP  
NORTH AMERICA**



# PRE/POST RACE / FORMATION LAP

---

Refer to official schedule and MXM for final times and Instructions for races

Only one (1) Formation lap

- Balance tire scrubbing/brake warming with the size of the gap to the car in front of you
- Pay attention and stay close!

# RACE

---

One (1) FORMATION lap

Stay with Safety Car until Safety Car enters pits

Pack up on the way to T12

Pair up in T16-18 (No more tire scrubbing after T16)

Acceleration Point (Polesitter)

Jump/False start Reviews

- Gaps
- Timed/Early Acceleration
- Out of Line
- Column Passing – Passing cars in your column is NOT allowed until across the S/F line

Official Race start is FIRST time by



# FULL COURSE YELLOW

---

Failure to maintain proper Safety Car speed and correct gaps between Cars, or otherwise initiate manipulative action to gap Cars, is prohibited and subject to penalty.

Race Control radio, double yellow flags displayed

Response vehicles may begin to move as soon as FCY is announced

Leader to Safety Car speed, all Cars pack up – respect the area of incident/Track Services personnel

- RC instructions regarding track condition over radio
- SC dispatched from Pit Exit

RESTART

- Maintain SC speed, let SC get away, *no more tire scrubbing after Turn 16*

RESTART ACCELERATION ZONE – After exit of T19

- Passing on display of green flag

# RESTART ACCELERATION ZONE

Restart acceleration zone is after the exit of Turn 19.

Passing is permitted when the Green Flag is displayed (at 1<sup>st</sup> Flag Post).





# ON-TRACK CONDUCT

---

## **LOCAL YELLOW FLAGS (SEE ARTICLE 27)**

- No passing from point perpendicular to yellow flag to the point perpendicular to the following green flag

## **BLOCKING (SEE ARTICLE 30)**

- Movement in reaction to the trailing Car
- Defending increases responsibility

## **CONTACT/INCIDENT RESPONSIBILITY (SEE ARTICLE 30)**

- Review with Driver Advisor in RC
- Incidents under review announced by Race Control

## **COEXISTENCE**

- Maintaining awareness lessens margin for error, regardless of responsibility

## **COMMUNICATE REVIEW REQUESTS TO PIT OFFICIALS**

- Must provide time of day, location, and description of action to be reviewed

## **POST RACE VIDEO REVIEW WILL CONTINUE IN 2024**

- Probation will continue to be used when appropriate

# ON-TRACK REVIEW

---

## Road Atlanta Review

- One Full Course Caution, otherwise very good!

## COTA Specifics

- Turn 1 starts
- Turn 3 speed
- Turn 11 brake zone
- Turn 12 brake zone - speed/braking point
- Turn 11,15, 19, 20 Track Limits



# PORSCHE CARRERA CUP NORTH AMERICA

## CIRCUIT OF THE AMERICAS

THANK YOU

**PORSCHE**

---

**CARRERA CUP  
NORTH AMERICA**