

# MUSTANG CHALLENGE

## ROAD AMERICA

DRIVER AND TEAM MANAGER BRIEFING



# SERIES CONTACTS



Glenn Long	Series Director	(919) 614-4797
Chris Capaldi	Assistant to Series Director	(704) 572 1839
Brian Delaney	Podium Facilitator	(317) 407-0089
James Burke	Assistant to Race Director	(801) 815-4508
Margie Abernathy	Hospitality	(704) 929-9104
Mark Canup	Transportation and Facilities	(850) 519-8690



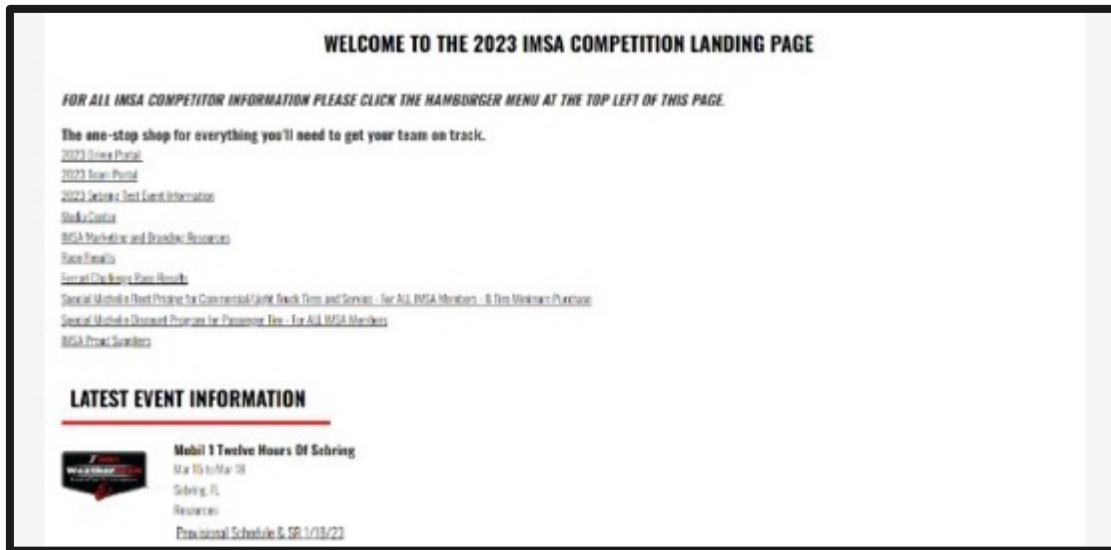
Chelsey Vickery	Race Director	(812) 431-7716
Duane Sampson	Director, Single Make	(386) 285-7021
Austin Farr	Coordinator, Single Make	(386) 293-1702
Cory Posocco	Paddock Logistics	(386) 566 8313
Paul Walter	Sporting	(614) 598-6783
Steven Sewell	Technical	(860) 671-1401
Johnny Knotts	Pit Lane Supervisor	(813) 763-4669
Carol Mueller	Manager, Member Services	(386) 262-8932
David Pees	Timing & Scoring	(386) 308-8866
Ryan McLean	Medical Liaison	(386) 285-6913
Roy Spielmann	Track Services	(414) 702-0905
Robert Bosworth	Safety & Security	(704) 728-8087

# IMSA RESOURCES

IMSA COMPETITOR LANDING PAGE:

<https://www.imsa.com/competitors/>

- Team Portal
- Event Information
- Rules & Regulations
- Marketing & Branding Page



IMSA NOTICE BOARD:

<http://results.imsa.com/>

- Driver & TM Briefings
- Entry Lists
- Minute by Minute
- Timing Results
- Penalties



# MERG

---

## **DURING EVENT USES**

- Discontinue participation in Event before Race
- Chassis Change

## **AFTER QUALIFYING**

- Engine Change submit through MERG

## **DURING RACE**

- Retire from Race



# » TO IMSA REGISTRATION

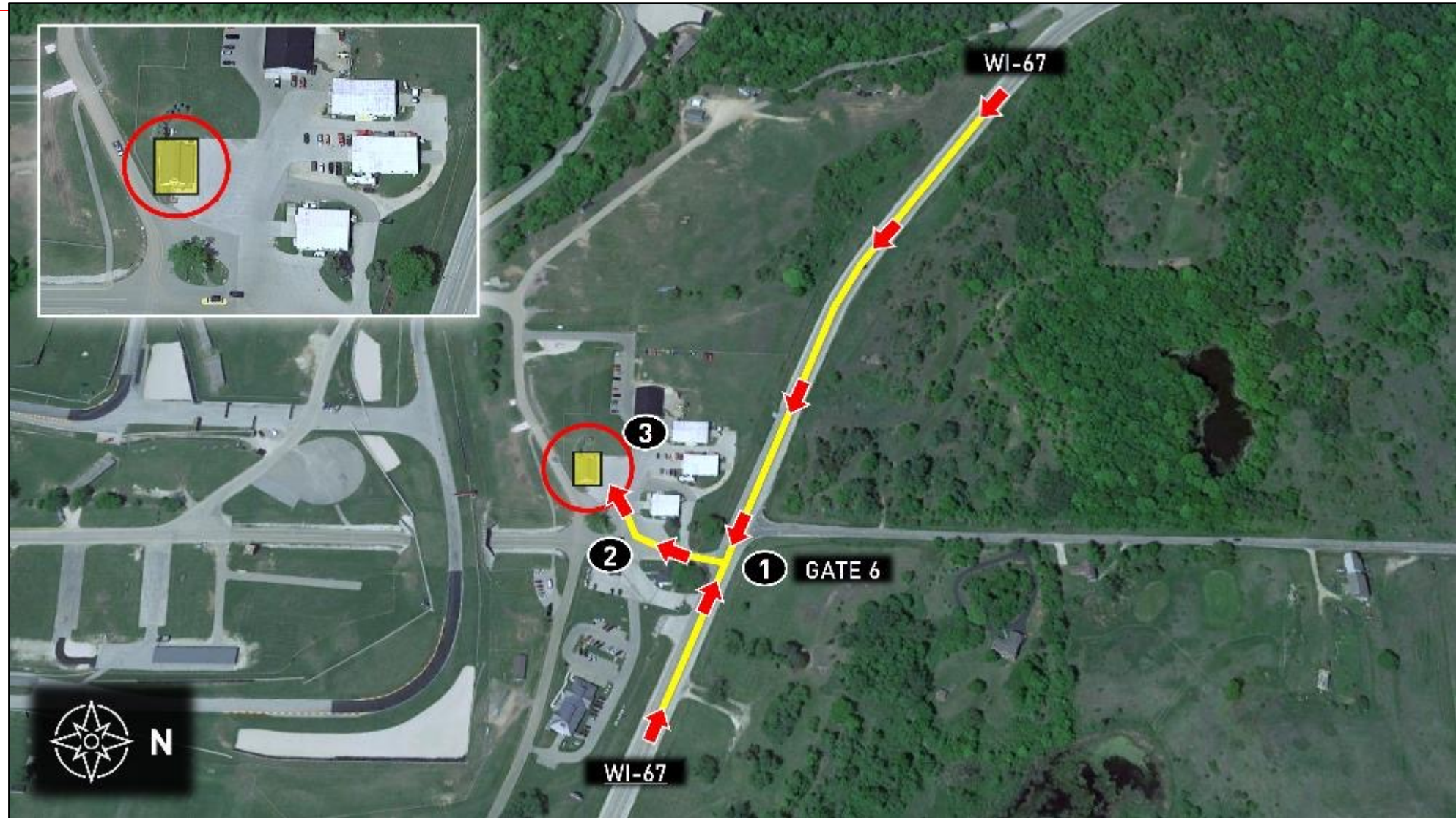


## Directions

1. Take WI-67 to Gate 6
2. Take first right (before security checkpoint)
3. Follow signage to IMSA Registration (yellow shaded area; see inset photo)

## Notes

- Address: N7390 WI-67, Plymouth, WI 53073
- Refer to Official Schedule / SR for Registration hours





# » TO IMSA TEAM PARKING

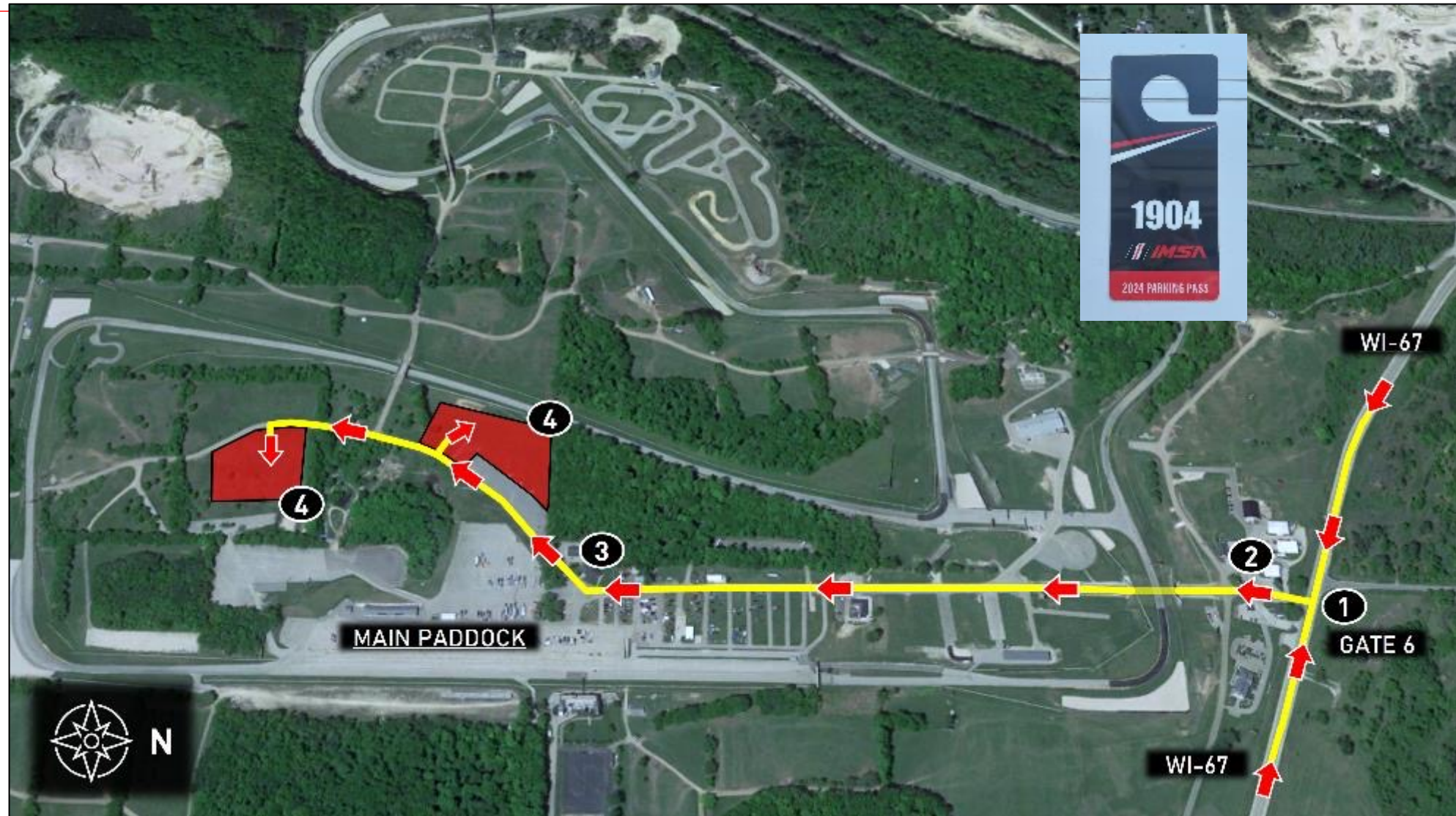


## Directions

1. Take WI-67 to Gate 6
2. Proceed straight through Security Checkpoint and Main Tunnel. Continue uphill
3. Take first exit at Roundabout
4. Proceed to IMSA Team Parking (red shaded areas)

## Notes

- Address: N7390 WI-67, Plymouth, WI 53073
- IMSA Annual Hangtag and proper credentials required for facility entry



# COMPETITION & RACING OPERATIONS



# IMSA TRACK SERVICES

## IMSA CHASE VEHICLES

- Chase 1
- Chase 2
- Chase 3
- Chase 4

## ON-TRACK ASSISTANCE

- Communication with Track Services Medic
- Neutral and power shut off
- Follow direction of on-scene Track Services personnel
- Maintain a safe speed and distance when passing on-track incidents with Track Services team members on the scene

Contact: Roy Spielmann (414) 702-0905





# » CARE CENTER LOCATION



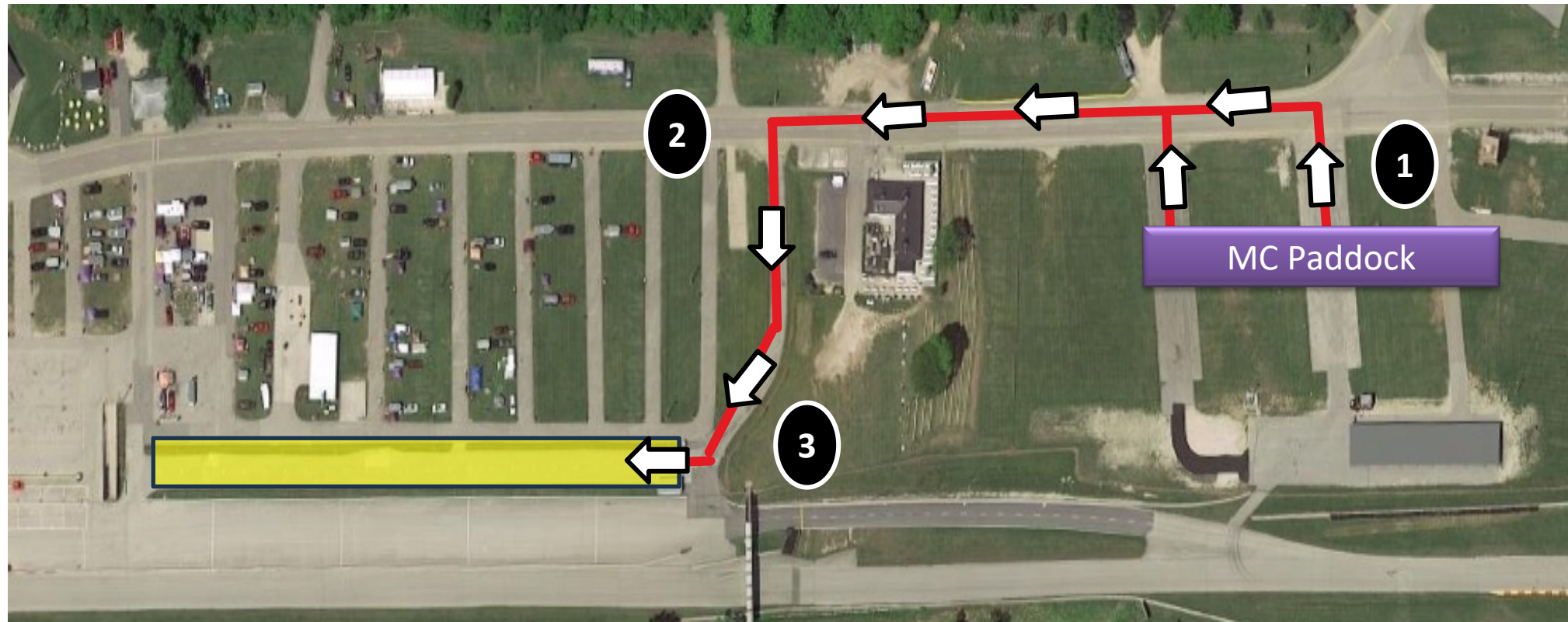
## Notes

- Care Center located on West side of Paddock Roundabout
- See Official Schedule / SR for Care Center Hours



## Locations

1. Exit MC Paddock and turn left onto Main Paddock Road
2. Turn left onto False Grid access road
3. Located parallel to Pit Lane and Paddock

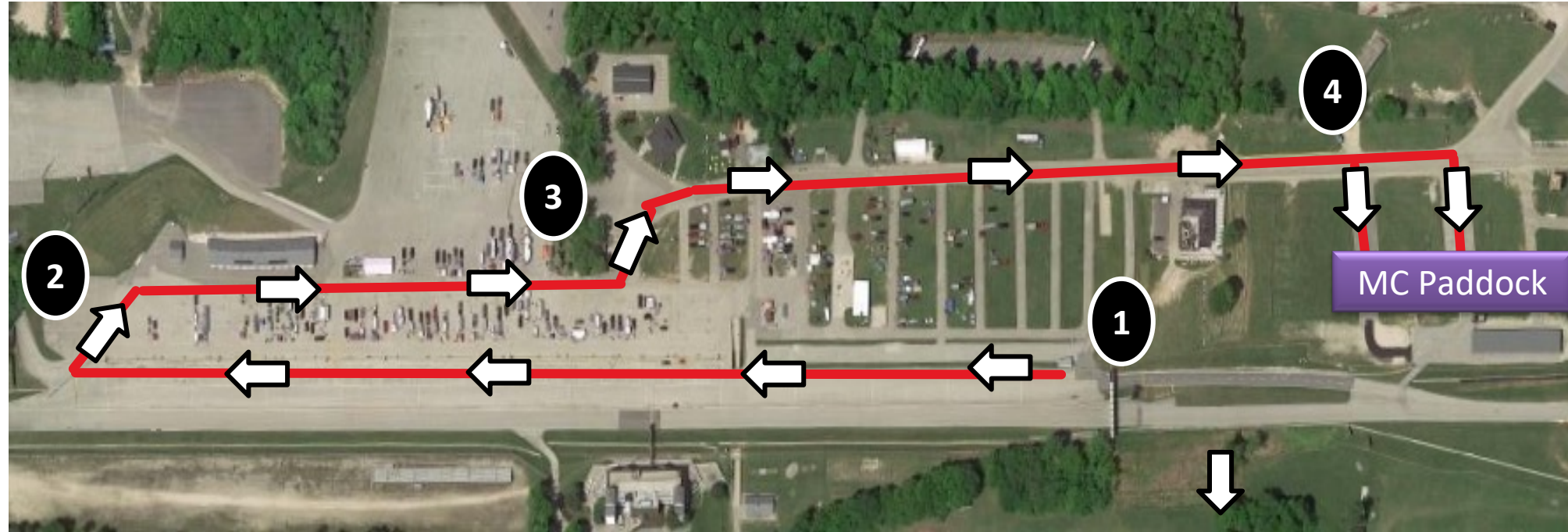




# » PIT LANE TO PADDOCK

## Directions

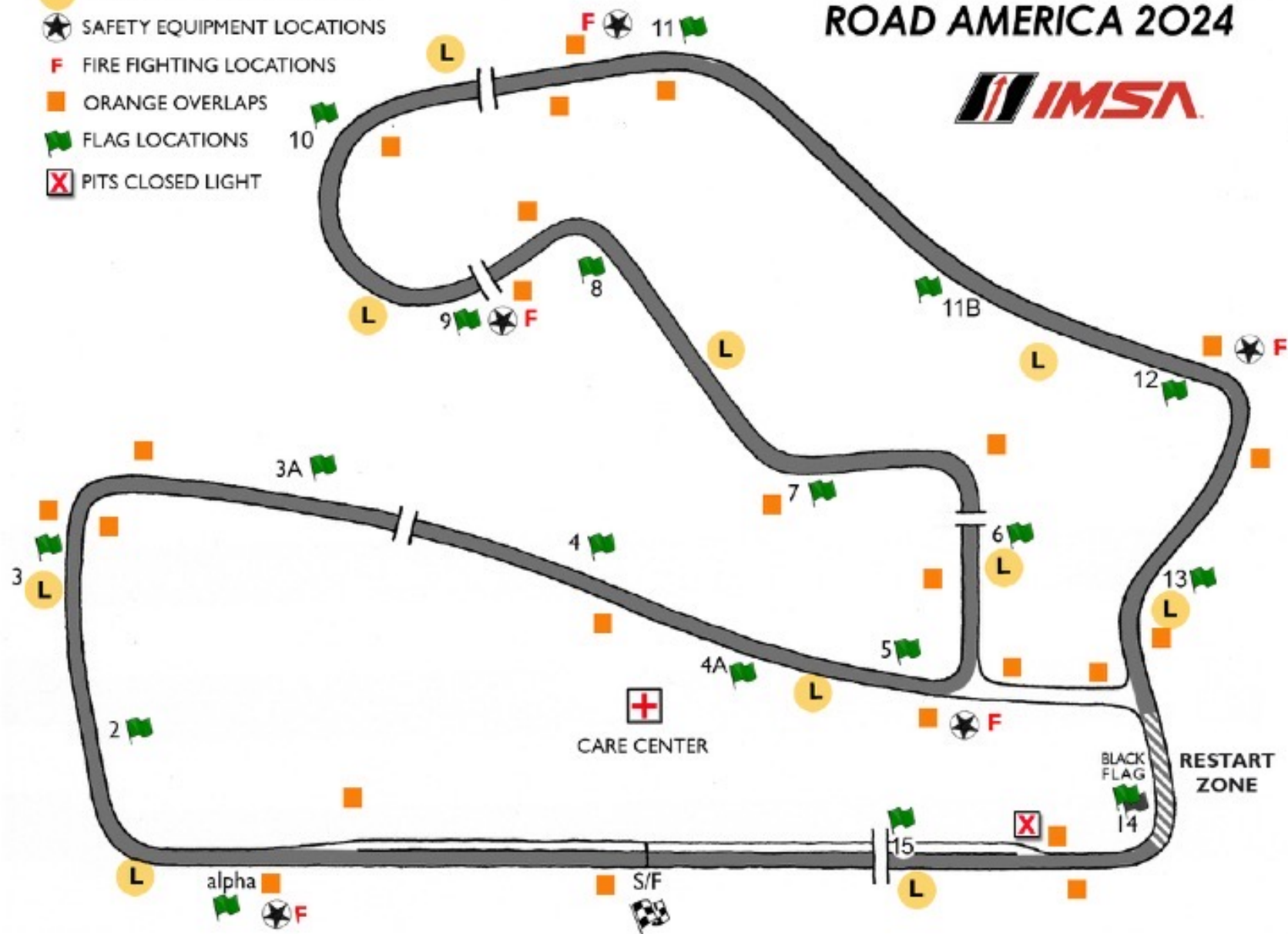
1. Exit track onto Pit Lane and proceed down Pit Lane
2. Turn right at the end of Pit Lane and follow the road through the IWSC Paddock
3. Turn left past the IWSC paddock
4. Follow the main paddock road and turn right into designated paddock area



# IMSA SPORTSCAR WEEKEND ROAD AMERICA 2024



- L** IMSA DELPHI LIGHT LOCATIONS
- ★** SAFETY EQUIPMENT LOCATIONS
- F** FIRE FIGHTING LOCATIONS
- ORANGE OVERLAPS
- 🚩** FLAG LOCATIONS
- X** PITS CLOSED LIGHT





# PRACTICE/QUALIFYING

---

## PRACTICE-

### LENGTH OF SESSIONS - 30 Minutes each

- Do not have to start from pit box, Cars can line up at pit exit.
- If starting from pit box, must wait until RC releases Cars.

## QUALIFYING-

### LENGTH OF SESSION - Only 15 Minutes

- Must start in pit box at start of session and on restarts - Drive-Through Penalty
- Guaranteed Minimum Green Flag Time = 7 Minutes
  - Red Flag Time Stops
  - Red Flag Protocol
- Lap time invalidated for track limit violation.
- Do not touch Car, during or post-qualifying. Ask Pit Official first if you have a problem.

# PIT ENTRY

- Decelerate off line out of T14 when entering the pit lane.



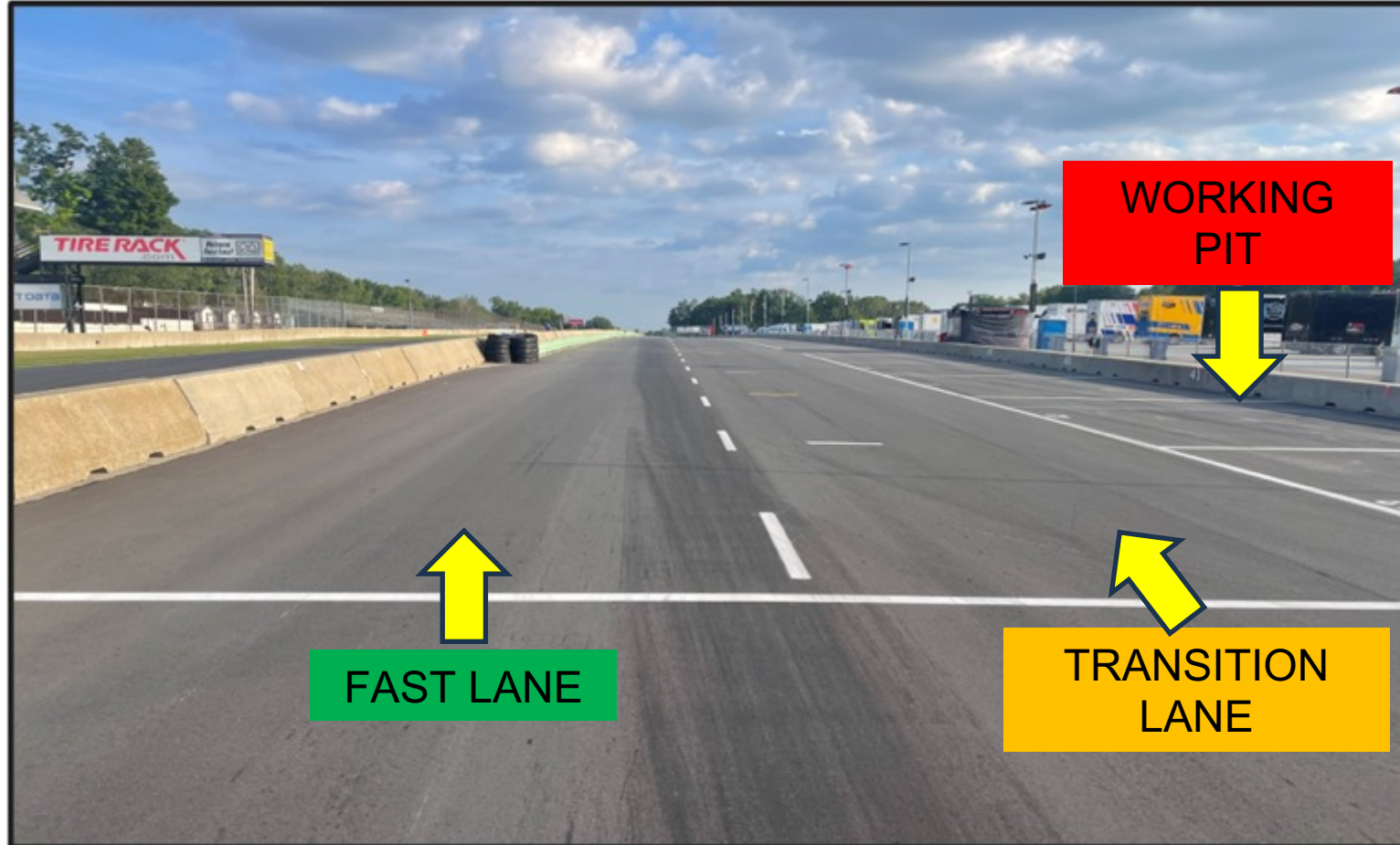
# PIT LANE SPEED LIMIT

Pit Lane Speed (60KPH) starts at Red Pylons





# PIT LANE PROTOCOL





# PIT EXIT / PENALTY BOX



# PIT EXIT/ PIT LANE SPEED





# PIT EXIT MERGE

Two wheels remain to the RT of solid yellow line.

Cars permitted to cross the dashed yellow line.

Merge safely into T1.

Respect the speed difference of those already on track.



# PIT EXIT MERGE

Two wheels remain to the RT of solid yellow line.

Cars permitted to cross the dashed yellow line.

Merge safely into T1.

Respect the speed difference of those already on track.





# TRACK LIMITS T1

Minimum of two wheels required on track.

Two wheels on curbing is considered 'on track' and acceptable. The curb is defined as the asphalt with the white lines.

Merge safely back onto racing surface if on curbing.



# ORANGE OVERLAPS



# ORANGE OVERLAPS- T5 BACK DOOR TO PADDOCK

Maintain safe paddock speed, 15 mph or less!





# TURN 8





# TURN 12



# ADDITIONAL ITEMS



# NEW CAR NUMBER DECAL GUIDELINES

- New number decal formats for Road America
- Front windshield numbers in white with 10pt centered stroke, Arial Bold font [7" H]
- Rear bottom left bumper numbers in contrasting color (white or black only) with 10pt centered stroke, Arial Bold font [5.75" H]
- [Click here to access updated guidelines](#)





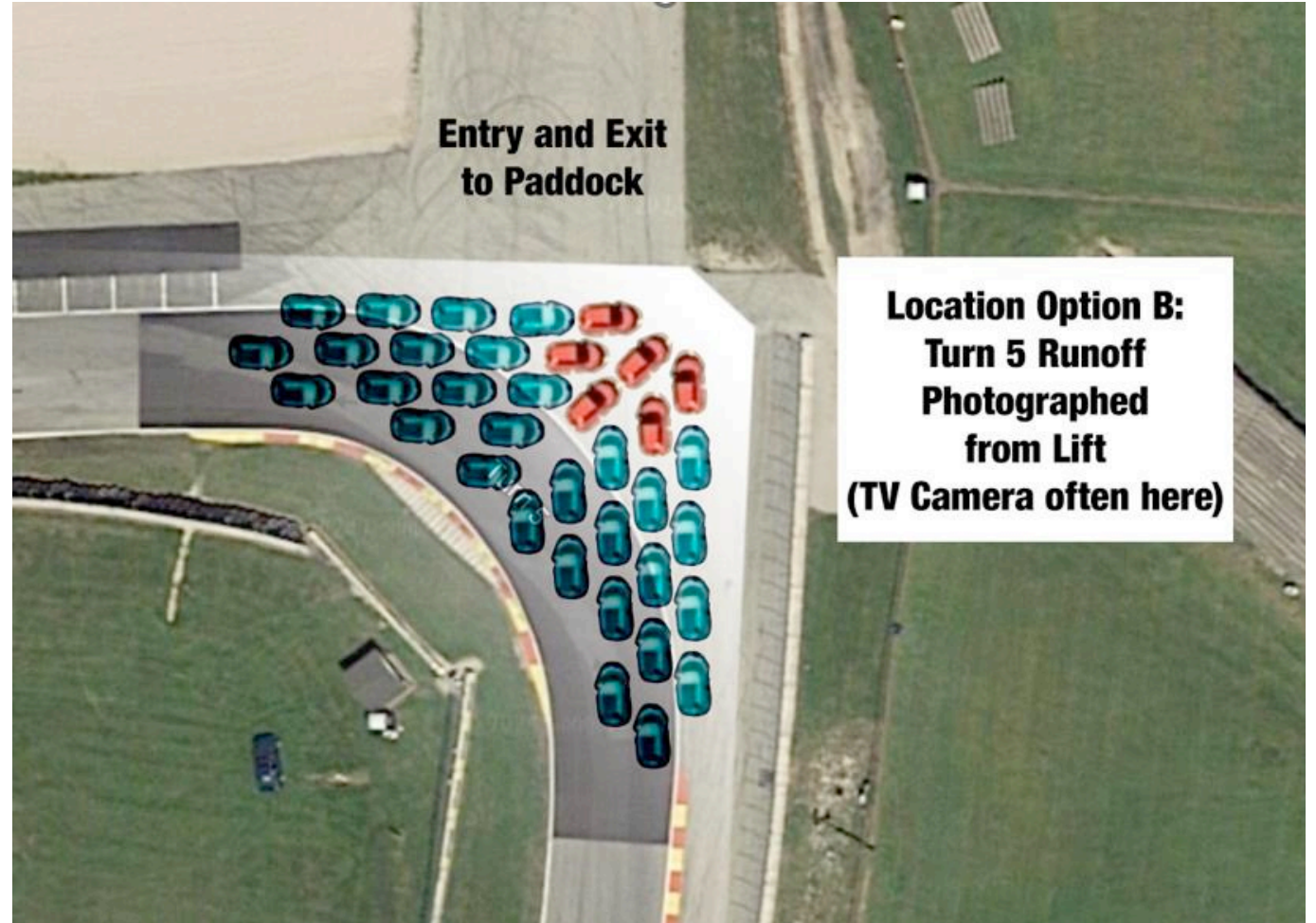
# MUSTANG FAMILY PHOTO

## Ford Performance 2024 “All Mustang” Photoshoot

**Location:** Road America, Turn 5

**Date:** Thursday, August 1

**Time:** 4:00 p.m. – 5:00 p.m. CT



**Entry and Exit  
to Paddock**

**Location Option B:  
Turn 5 Runoff  
Photographed  
from Lift  
(TV Camera often here)**

# MUSTANG FAMILY PHOTO

---

**Mustang Challenge to confirm via Drivers' briefing on Wednesday, July 31.**

**3:30 p.m. – Mustang Challenge will stage in their Paddock, awaiting release by Series.**

- Mustang Challenge Cars not permitted to stage at Turn 5 entry/exit due to safety workers, vehicles at end of Carrera Cup practice.
- Leads: \*Glenn Long, Brendan Capria, Dawn Zinsmaster

**4:00 p.m. – Mustang GT4 teams (3) may be staged at entry/exit to Turn 5 runoff, and will be the first to position**

- Leads: \*Brendan Capria, Wes Duenkel

**~4:05 p.m. – Mustang Challenge en-route to location, will file onto the track one-by-one to each side of Turn 5, allowing room to turn-around and idle into position.**

- Released by Dawn Zinsmaster; Glenn Long will relay from Paddock to Brendan Capria, who will direct each on-track.

**4:45 p.m. – Mustang GT3 will join the photo**

- First Cars to leave to make technical inspection, followed by GT4 and Mustang Challenge.

**5:00 p.m. END | [EST: 10-15 min. shooting]**

# MUSTANG CHALLENGE

THANK YOU





# MUSTANG CHALLENGE

## ROAD AMERICA

DRIVER AND TEAM MANAGER BRIEFING



# PRE-RACE / POST RACE MXM

---

Found on IMSA Notice Board

# RACE

---

One (1) FORMATION lap

Stay with Safety Car until Safety Car enters pits

Pack up after T11

Pair up after T12 (No more tire scrubbing)

Acceleration Point (Polesitter)

Jump/False start Reviews

- Gaps
- Timed/Early Acceleration
- Out of Line
- Column Passing – Passing cars in your column is NOT allowed until across the S/F line

Official Race start is FIRST time by



# START EXPECTATION



# IMPROPER START



# FULL COURSE YELLOW

Race Control radio, in-car lights, double yellow flags displayed

Leader to Safety Car speed, all Cars pack up - respect the area of incident/Track Services personnel

- RC instructions regarding track condition over radio
- SC dispatched from Pit Exit

Response vehicles may begin to move as soon as FCY is announced

## RESTART

- Maintain SC speed, let SC get away, *no more tire scrubbing after T12*

## RESTART ACCELERATION ZONE - Entry of T14

- Passing on display of green flag

Failure to maintain proper Safety Car speed and correct gaps between Cars, or otherwise initiate manipulative action to gap Cars, is prohibited and subject to penalty.



# RESTART ACCELERATION ZONE

Restart acceleration zone is T14

Passing is allowed on restarts when green flag is displayed.



# ON-TRACK CONDUCT

---

## LOCAL YELLOW FLAGS (SEE ARTICLE 27)

- No passing from point perpendicular to yellow flag to the point perpendicular to the following green flag

## BLOCKING (SEE ARTICLE 30)

- Movement in reaction to the trailing Car
- Defending increases responsibility

## CONTACT/INCIDENT RESPONSIBILITY (SEE ARTICLE 30)

- Review with Driver Advisor in RC
- Incidents under review announced by Race Control

## COEXISTENCE

- Maintaining awareness lessens margin for error, regardless of responsibility

## COMMUNICATE REVIEW REQUESTS TO PIT OFFICIALS

- Must provide time of day, location, and description of action to be reviewed

# MUSTANG CHALLENGE

THANK YOU

