

WHELEN MAZDA MX-5 CUP

TEAM MANAGER MEETING



SERIES CONTACTS



Keith Dalton	Series Manager	(863) 381-1942
Marcus Haselgrove	Technical Director	(954) 224-3408
Doug Morrissey	Pit Lane Supervisor	(262) 443-0305

Randy Buck	Race Director	(415) 298-7018
Duane Sampson	Director, Single Make	(386) 285-7021
Cory Posocco	Paddock Logistics	(386) 566-8313
Eric Haverson	Technical	(386) 562-7214
Gayle Burnham	Administration	(386) 235-7800
David Pees	Timing & Scoring	(386) 308-8866
Ryan McLean	Medical Liaison	(386) 285-6913
Roy Spielmann	Track Services	(414) 702-0905
Robert Bosworth	Safety & Security	(704) 728-8087

IMSA RESOURCES

IMSA COMPETITOR LANDING PAGE:

<https://www.imsa.com/competitors/>

- Team Portal
- Event Information
- Rules & Regulations
- Marketing & Branding Page

IMSA NOTICE BOARD:

<http://results.imsa.com/>

- Driver & TM Briefings
- Entry Lists
- Minute by Minute
- Timing Results
- Penalties

WELCOME TO THE 2023 IMSA COMPETITION LANDING PAGE

FOR ALL IMSA COMPETITOR INFORMATION PLEASE CLICK THE HAMBURGER MENU AT THE TOP LEFT OF THIS PAGE.

The one-stop shop for everything you'll need to get your team on track.

[2023 Team Portal](#)

[2023 Team Portal](#)

[2023 Season Test Event Information](#)

[Media Center](#)

[IMSA Marketing and Branding Resources](#)

[Race Results](#)

[Event Checkups and Results](#)

[Special Member Event Pricing for Commercial Light Truck Class and Series - For ALL IMSA Members - B-Tier Minimum Purchase](#)

[Special Member Event Pricing for Passenger Cars - For ALL IMSA Members](#)

[IMSA Prized Sponsors](#)

LATEST EVENT INFORMATION



Mobil 1 Twelve Hours Of Sebring

Mar 15-16/18

Sebring, FL

Resources:

[Printed Schedule & SR 1/10/23](#)



» TO IMSA REGISTRATION

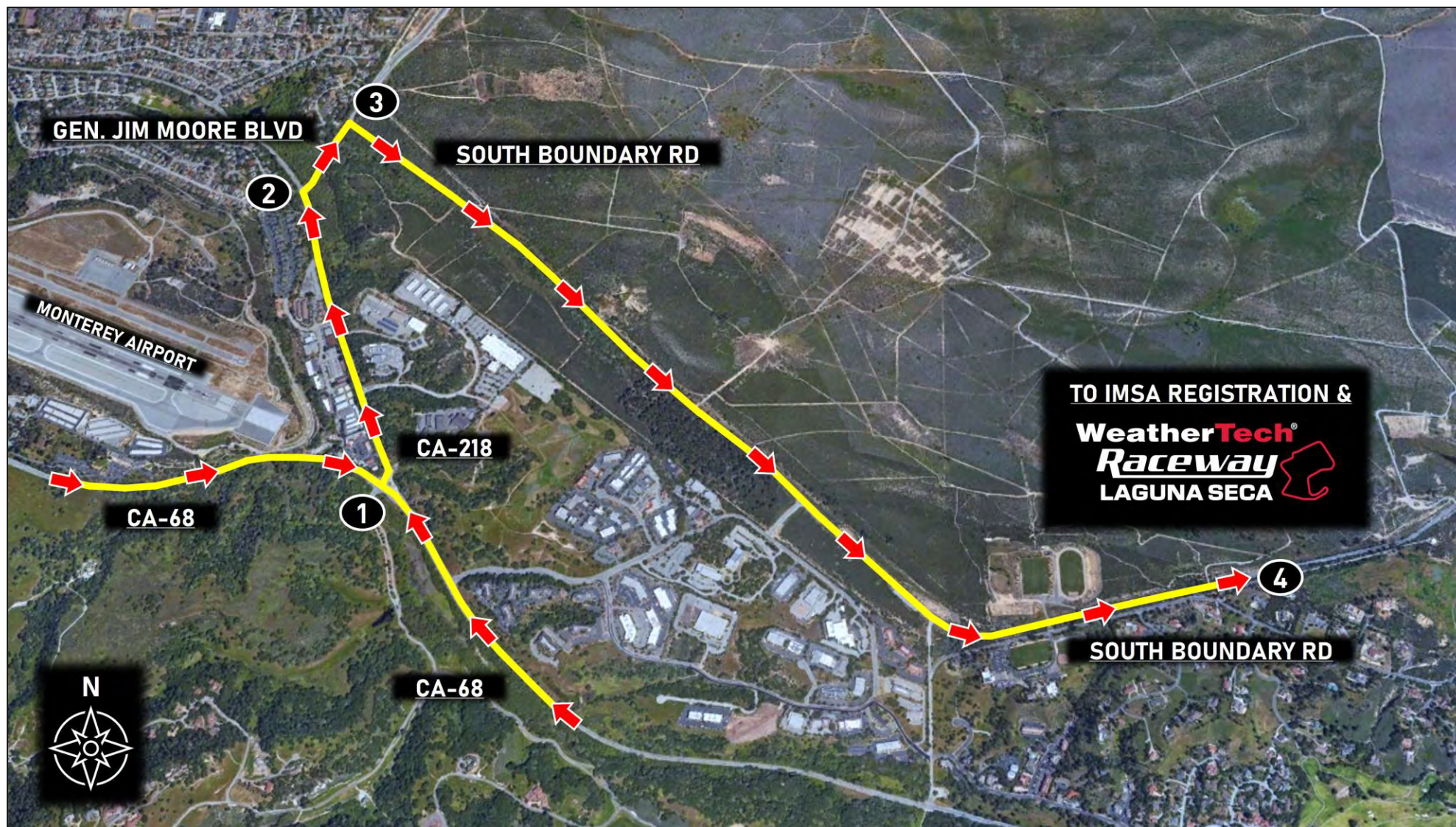


Directions

1. Take CA-68 (Monterey Salinas Hwy) to CA-218 (Canyon Del Rey Blvd)
2. Turn right onto General Jim Moore Blvd
3. Turn right onto South Boundary Road (passing through swing gates)
4. Proceed on South Boundary Road to IMSA Registration & WeatherTech Raceway Laguna Seca

Notes

- IMSA Registration hours can be found in the Official Schedule/SR



Directions

1. Take CA-68 (Monterey Salinas Hwy) to Track Entrance
2. Proceed uphill on A Rd to S Perimeter Rd intersection
3. Turn right on S Perimeter Rd, towards parking area
4. Park in designated IMSA Team Parking location, Blue Lot 2 (blue shaded area)

Notes

- CA-68 Entrance open at 6:00 AM from Thur, May 9 - Sun, May 12
- IMSA annual parking passes valid at this event (black hangtags)



MERG

DURING EVENT USES

- Discontinue participation in Event before Race
- Chassis Change

AFTER QUALIFYING

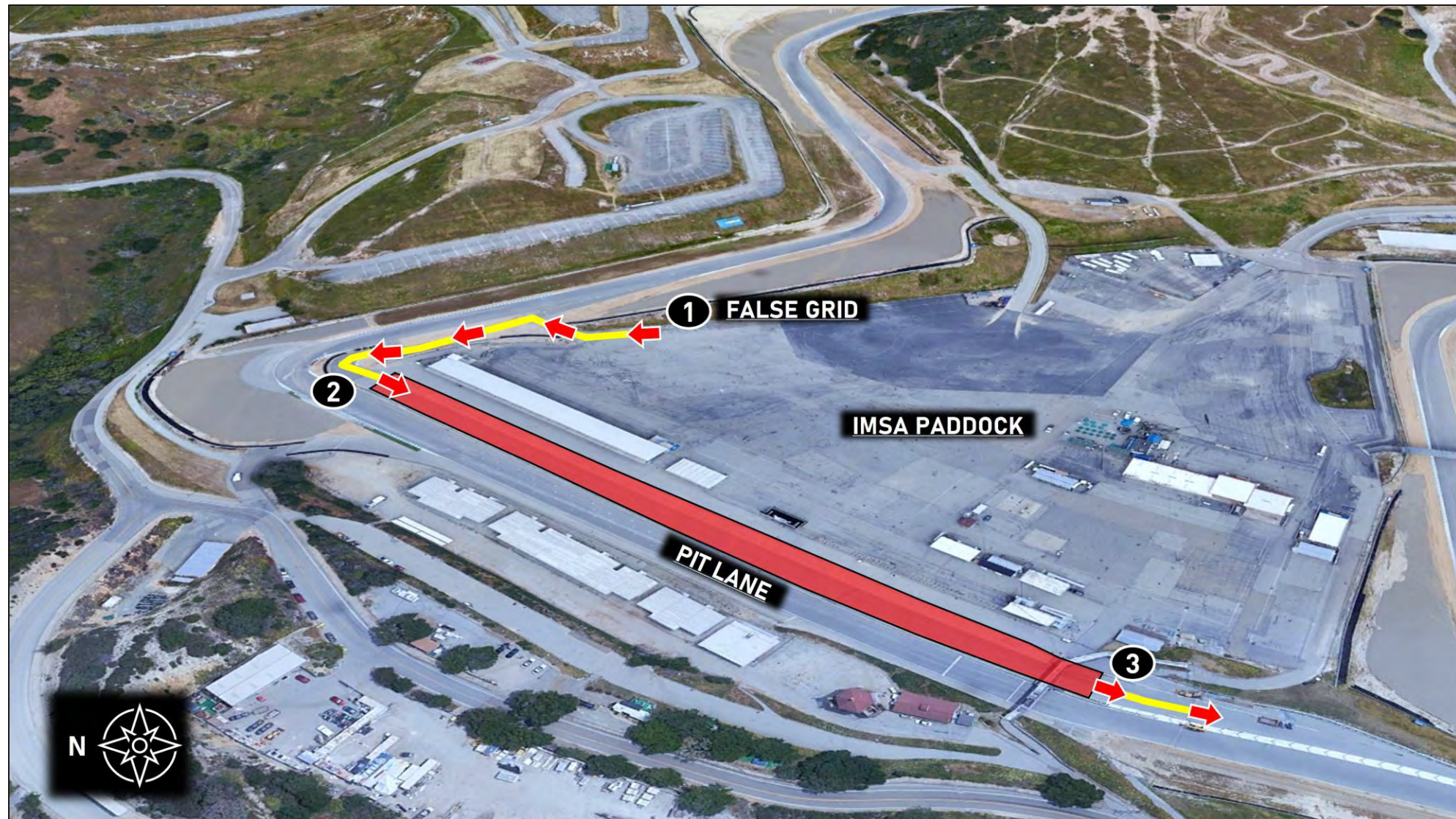
- Engine Change
- Request to change one (1) tire
- Request to change more than one (1) tire

DURING RACE

- Retire from Race

Directions

1. Proceed to False Grid
2. Enter Pit Lane
3. Proceed onto racecourse



Directions

1. Exit racecourse onto Pit Lane
2. Continue down Pit Lane
3. Exit Pit Lane on drivers' left, past pit row suites
4. Proceed to assigned team space / set-up

Notes

- All cars must be pushed through the garage gate before entering the paddock

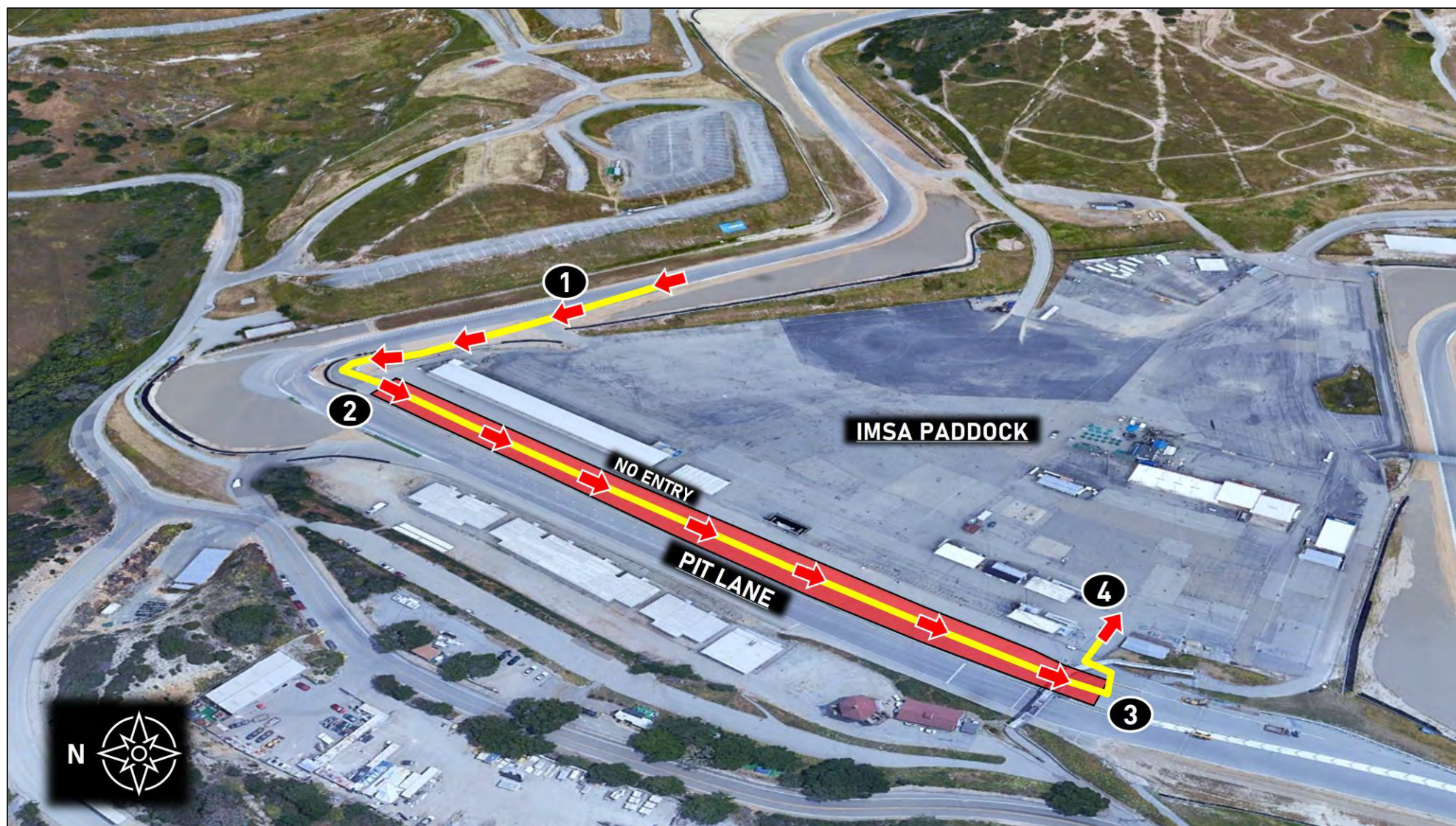


Directions

1. Exit racecourse onto Pit Lane
2. Continue down Pit Lane
3. Exit Pit Lane on drivers' left, past foot bridge. Sharp left turn to enter paddock area
4. Proceed to assigned team space / set-up

Notes

- There will be no paddock access at entrance nearest Pit Lane structure



IMSA TRACK SERVICES

IMSA CHASE VEHICLES

- Chase 1
- Chase 2
- Chase 3
- Chase 4

ON-TRACK ASSISTANCE

- Communication with Track Services Medic
- Neutral and power shut off
- Follow direction of on-scene Track Services personnel
- Maintain a safe speed and distance when passing on-track incidents with Track Services team members on the scene

Contact: Roy Spielmann 414.702.0905



IMSA TRACK SERVICES

ON-TRACK ASSISTANCE

- Cars are not flat towed down the corkscrew
- Cars are released at the top of the corkscrew and coast to T10 back door gate to the paddock

» DISABLED CAR ROUTE



Directions

1. Coast to Turn 10 back-door paddock entrance and exit track
2. Enter paddock via manned gate and proceed to designated paddock area

Notes

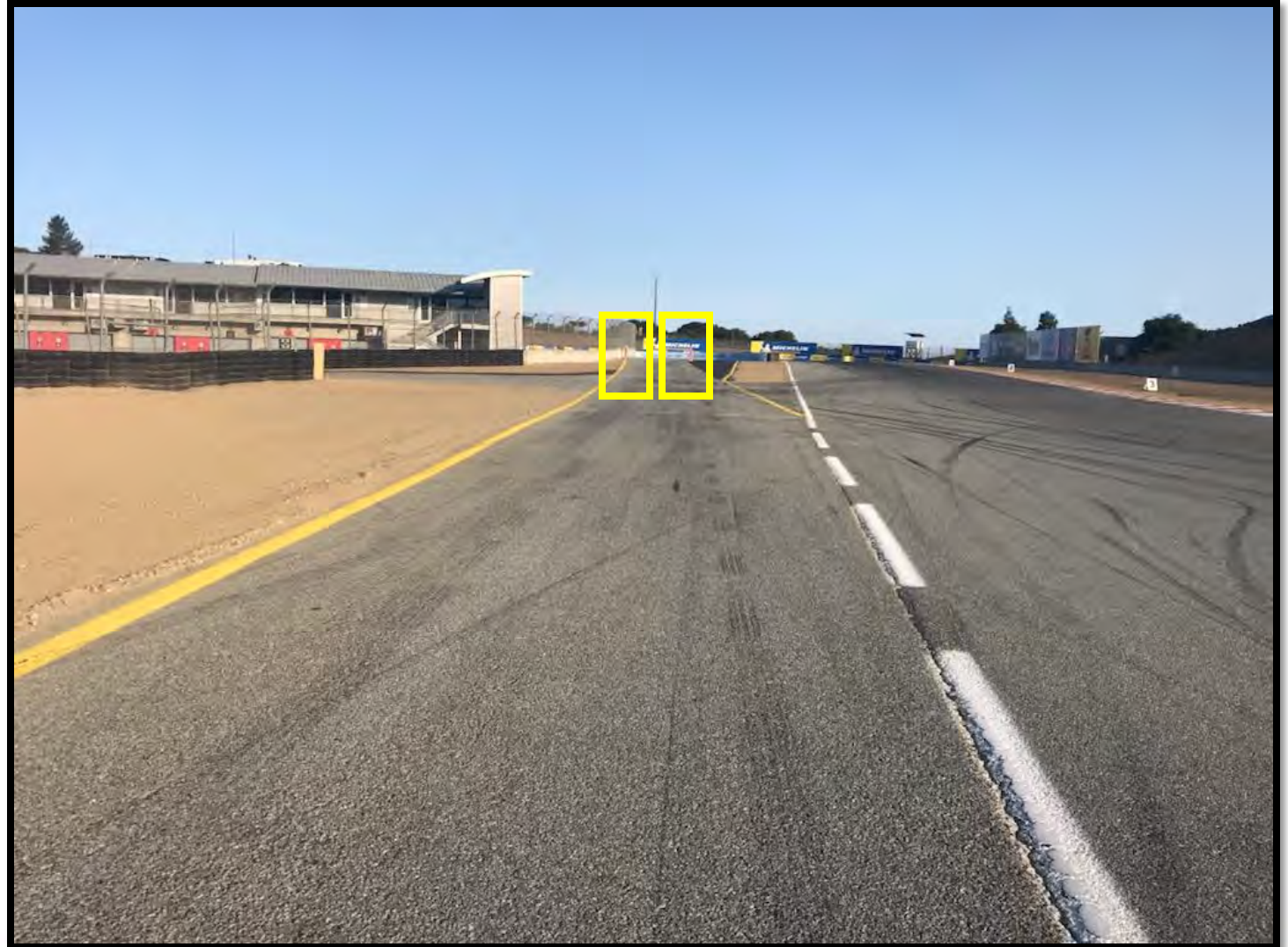
- Route is intended for disabled cars or cars released by Track Services at Turn 8



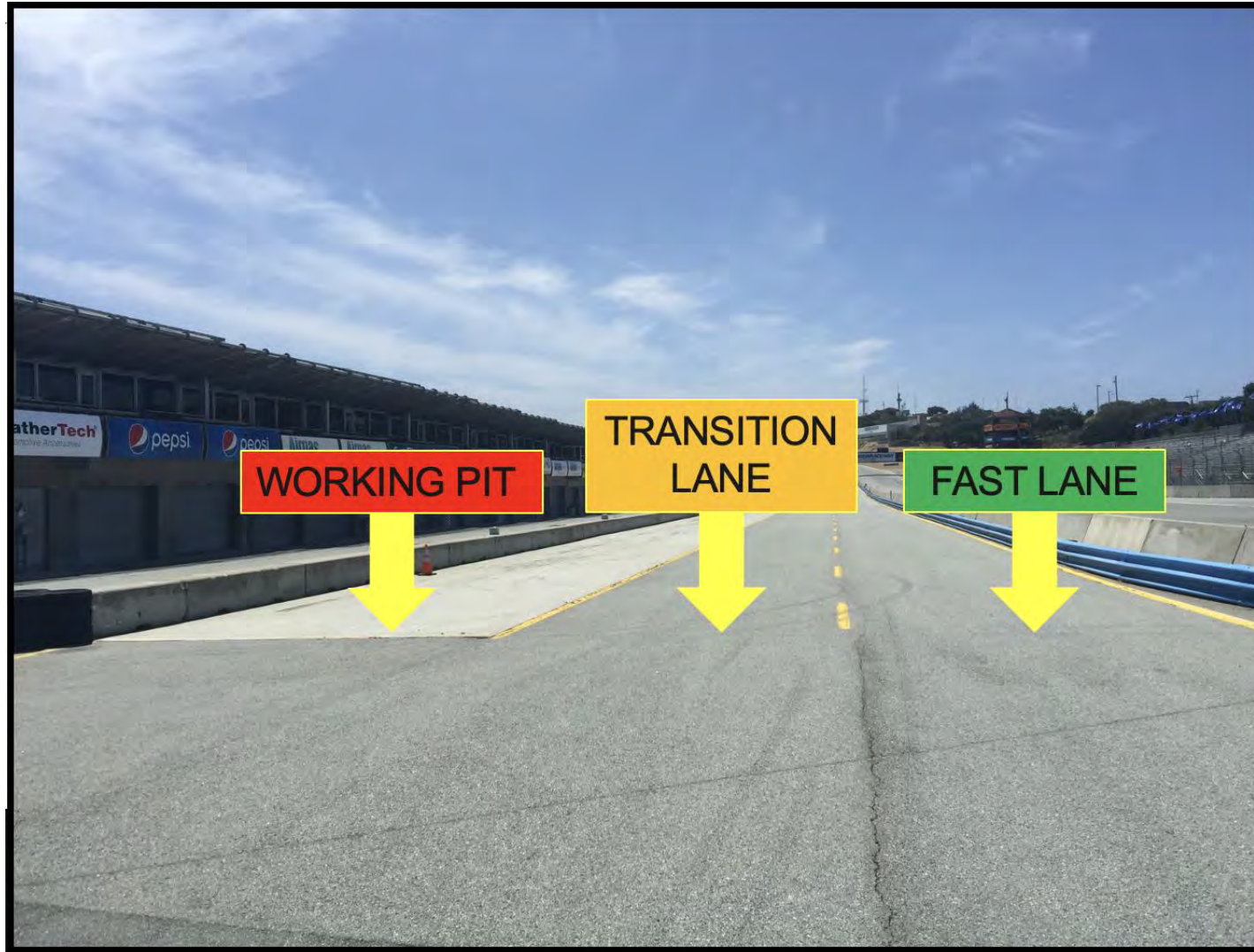
PIT SPEED BEGINS

Pit Lane speed limit begins at Red Pylons.

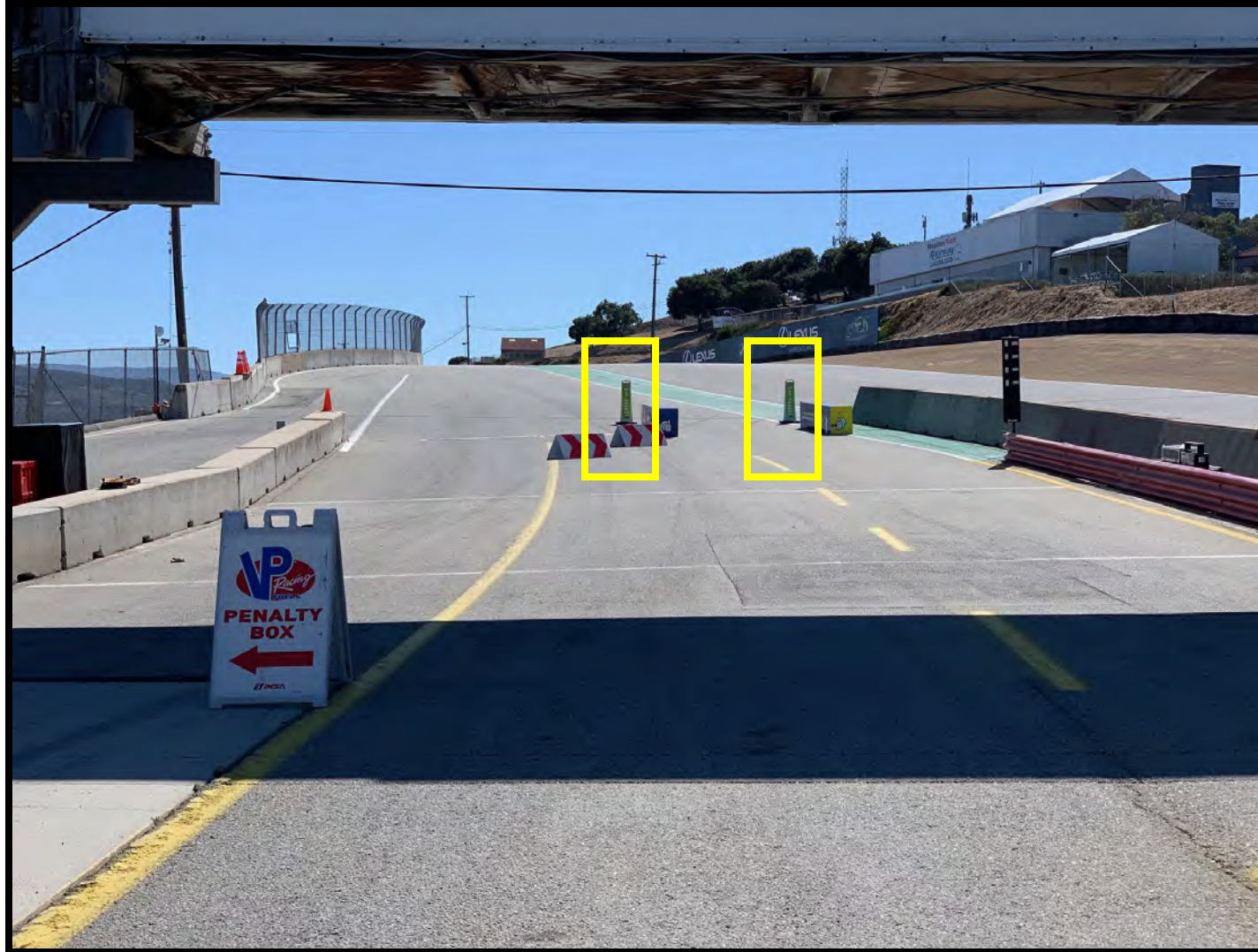
Pit Lane speed is 60 kph.



PIT LANE PROTOCOL



PIT EXIT / PENALTY BOX / PIT SPEED ENDS



PIT EXIT MERGE

Cars exiting the Pit Lane must remain FOUR wheels to the left of the merge line until it ends in Turn 2.

Cars on track must respect the speed difference of those in the Pit Exit merge lane.

Track limits will be enforced.



PIT EXIT MERGE

Cars exiting the Pit Lane must remain left until Turn 3.

Merge safely with faster cars on track.

Respect the speed difference of those already on track.



ORANGE OVERLAPS

Overlaps are marked throughout the circuit and are indicated on the Official Track Map.

Competitors with disabled cars are requested to exit at these locations when unable to continue to the pits.



ORANGE OVERLAPS

Overlaps are marked throughout the circuit and are indicated on the Official Track Map.

Competitors with disabled cars are requested to exit at these locations when unable to continue to the pits.



TRACK LIMITS – TURN 5



TRACK LIMITS – TURN 9



SHORT CUT – TURN 10



QUALIFYING

LENGTH OF SESSION – 15 mins Green Flag time (20 minutes allocated on schedule)

- Have a plan!
- Don't all leave Pit Lane as one group?
- Be respectful of others if not at race speed!

Maximum Lap Times for Qualifying

IMSA will set and apply Maximum Lap Times to manage Qualifying and inappropriate conduct of Cars during qualifying. If necessary, penalties for violations may be escalated

- A maximum lap time is defined for each Event
- The defined maximum lap times must not be exceeded during qualifying
- Where weather changes the track conditions significantly, the maximum lap time is not enforced
- The decision of the Race Director to apply or not apply a penalty for maximum lap time is Conclusive

Maximum Lap Time for continuous laps during Qualifying

- The maximum continuous lap time is based on 107% of the prior year's fastest qualifying lap for an Event with previous lap time data
- For a track without previous data, or in situations where track conditions have changed enough to make the previous year's lap times irrelevant, the time is based on 107% of the fast lap from the practice sessions at that event
- **This year's WRLS maximum lap time will be calculated after both Practice sessions**

QUALIFYING

Maximum Lap Times for Qualifying

Maximum Lap Time for out-laps and in-laps during Qualifying

- The maximum lap time for out- and in-laps is based on 130% of the prior year's fastest qualifying lap for an event with previous lap time data
- For a track without previous data, or in situations where track conditions have changed enough to make the previous year's lap times irrelevant, the time is based on 130% of the fast lap from the practice sessions at that event
- The maximum lap time for out- and in-laps is measured from the pit-out loop to S/F and/or from S/F to the pit-in loop
- **This year's WRLS maximum lap time will be calculated after both Practice sessions**

Penalty for exceeding Maximum Lap times

- Any driver exceeding these maximum times may be penalized by deletion of their two (2) fastest timed laps for each infraction

WHELEN MAZDA MX-5 CUP

THANK YOU

WHELEN[®]
— MAZDA —
MX-5 CUP

PRESENTED BY:  **MICHELIN**

WHELEN MAZDA MX-5 CUP

DRIVER & TEAM MANAGER RACE MEETING

WHELEN[®]
— MAZDA —
MX-5 CUP

PRESENTED BY:  **MICHELIN**

PRE-RACE / POST-RACE

Refer to official schedule and MXM for final times and Instructions for races

RACE

One (1) FORMATION lap

Stay with Safety Car until Safety Car enters pits

Pack up on the way to T8 / Pair up after exiting T8a

Acceleration Point (Polesitter)

Jump/False start Reviews

- Gaps
- Timed/Early Acceleration
- Out of Line
- Column Passing – Passing cars in your column is NOT allowed until across the S/F line

Official Race start is FIRST time by

FULL COURSE YELLOW

Failure to maintain proper Safety Car speed and correct gaps between Cars, or otherwise initiate manipulative action to gap Cars, is prohibited and subject to penalty.

Race Control radio, in-car lights, double yellow flags displayed

Response vehicles may begin to move as soon as FCY is announced

Leader to Safety Car speed, all Cars pack up – respect the area of incident/Track Services personnel

- RC instructions regarding track condition over radio
- SC dispatched from Pit Exit

RESTART

- Maintain SC speed, let SC get away, *no more tire scrubbing after T8a*

RESTART ACCELERATION ZONE – Entry to T11

- Passing on display of green flag

RESTART ACCELERATION ZONE

Restart acceleration zone is turn 11.

Passing is permitted when the Green Flag is displayed.



ON-TRACK CONDUCT

LOCAL YELLOW FLAGS (SEE ARTICLE 27)

- No passing from point perpendicular to yellow flag to the point perpendicular to the following green flag

BLOCKING (SEE ARTICLE 30)

- Movement in reaction to the trailing Car
- Defending increases responsibility

CONTACT/INCIDENT RESPONSIBILITY (SEE ARTICLE 30)

- Review with Driver Advisor in RC
- Incidents under review announced by Race Control

COEXISTENCE

- Maintaining awareness lessens margin for error, regardless of responsibility

COMMUNICATE REVIEW REQUESTS TO PIT OFFICIALS

- Must provide time of day, location, and description of action to be reviewed

POST RACE VIDEO REVIEW WILL CONTINUE IN 2024

- Probation will continue to be used when appropriate

ON-TRACK REVIEW / EXPECTATIONS

Sebring Review

- Turn 3-5

WeatherTech Raceway Laguna Seca Specifics

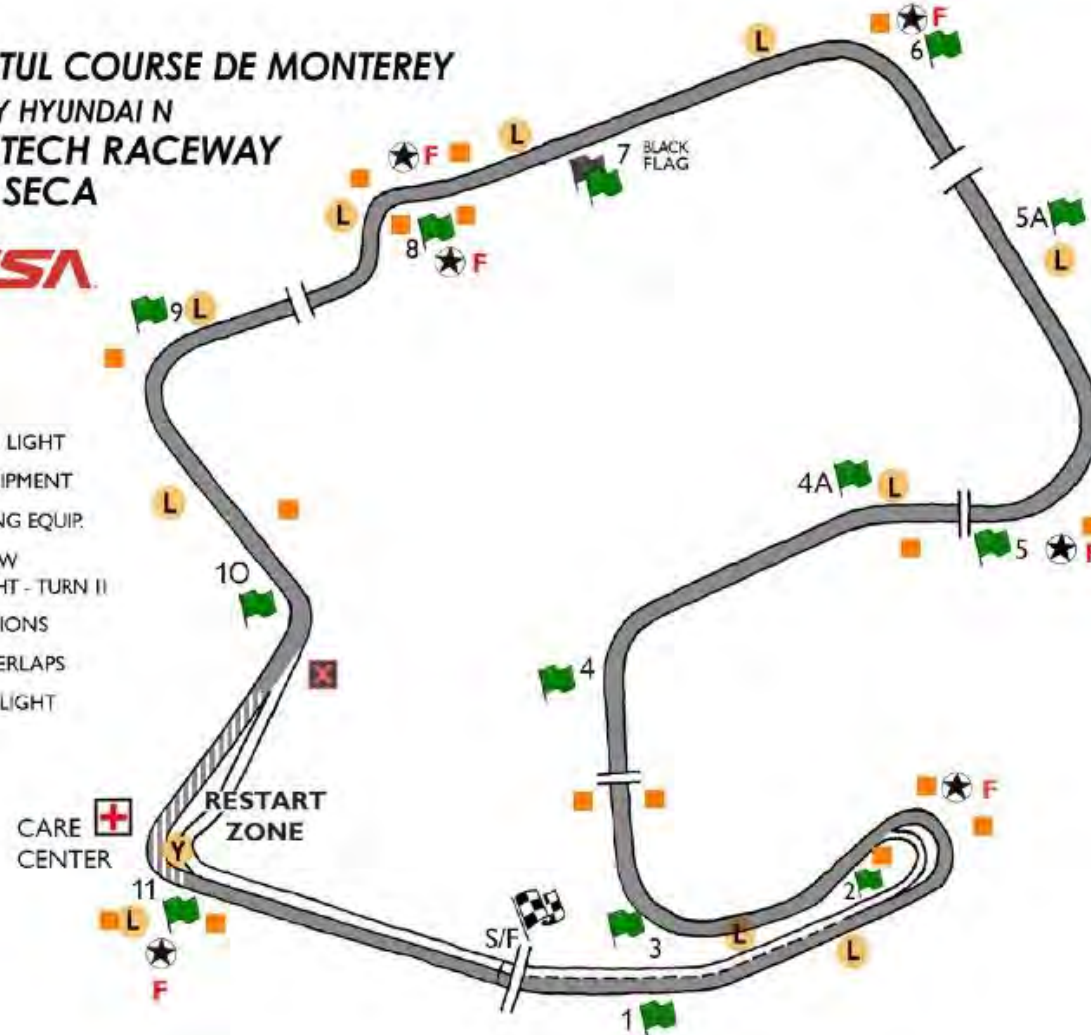
- Start – Bends left, Pit Exit merge lane
- Turn 8 brake zone
- Turn 11 brake zone

TRACK MAP

2024 MOTUL COURSE DE MONTEREY POWERED BY HYUNDAI N WEATHERTECH RACEWAY LAGUNA SECA



- L IMSA DELPHI LIGHT
- ★ SAFETY EQUIPMENT
- F FIRE FIGHTING EQUIP.
- Y- LOCAL YELLOW CAUTION LIGHT - TURN II
- FLAG LOCATIONS
- ORANGE OVERLAPS
- PITS CLOSED LIGHT



WHELEN MAZDA MX-5 CUP

THANK YOU

