

LAMBORGHINI SUPER TROFEO

WEATHERTECH RACEWAY LAGUNA SECA

TEAM MANAGER MEETING



SQUADRA CORSE

SERIES CONTACTS



Rene Suelzner	Series Manager	(781)267-1982
Angelo Dinkov	Series Support	(571)352-5570
Craig Jamison	Parts Support	(248)943-7343
Andrew Bosscher	Engineering Support	(586)709-8812
Rachel Crawford	Hospitality Coordinator	(248)935-9609
Danny Van Dongen	Hankook Motorsports USA	(305)809-0356

Todd Snyder	Race Director	(860)248-9115
Duane Sampson	Director, Single Make	(386)285-7021
Cory Posocco	Paddock Logistics	(386)566 8313
Scott Ellison	Technical	(734)621-9130
Johnny Knotts	Pit Lane Supervisor	(813)763-4669
Carol Mueller	Administration	(386)262-8932
David Pees	Timing & Scoring	(386)308-8866
Ryan McLean	Medical Liaison	(386)285-6913
Roy Spielmann	Track Services	(414)702-0905
Robert Bosworth	Safety & Security	(704)728-8087

IMSA RESOURCES

IMSA COMPETITOR LANDING PAGE:

<https://www.imsa.com/competitors/>

- Team Portal
- Event Information
- Rules & Regulations
- Marketing & Branding Page

IMSA NOTICE BOARD:

<http://results.imsa.com/>

- Driver & TM Briefings
- Entry Lists
- Minute by Minute
- Timing Results
- Penalties

WELCOME TO THE 2023 IMSA COMPETITION LANDING PAGE

FOR ALL IMSA COMPETITOR INFORMATION PLEASE CLICK THE HAMBURGER MENU AT THE TOP LEFT OF THIS PAGE.

The one-stop shop for everything you'll need to get your team on track.

[2023 Driver Portal](#)

[2023 Team Portal](#)

[2023 Season Test Event Information](#)

[Media Center](#)

[IMSA Marketing and Branding Resources](#)

[Race Results](#)

[Contact Us / Support / Feedback](#)

[Special Member Event Pricing for Commercial Light Truck Tires and Services - For ALL IMSA Members - B.Tire Minimum Purchase](#)

[Special Member Event Pricing for Passenger Tires - For ALL IMSA Members](#)

[IMSA Press Releases](#)

LATEST EVENT INFORMATION



Mobil 1 Twelve Hours Of Sebring

Mar 15/16/18

Sebring, FL

Reservations

[Provisional Schedule & SR 1/10/23](#)

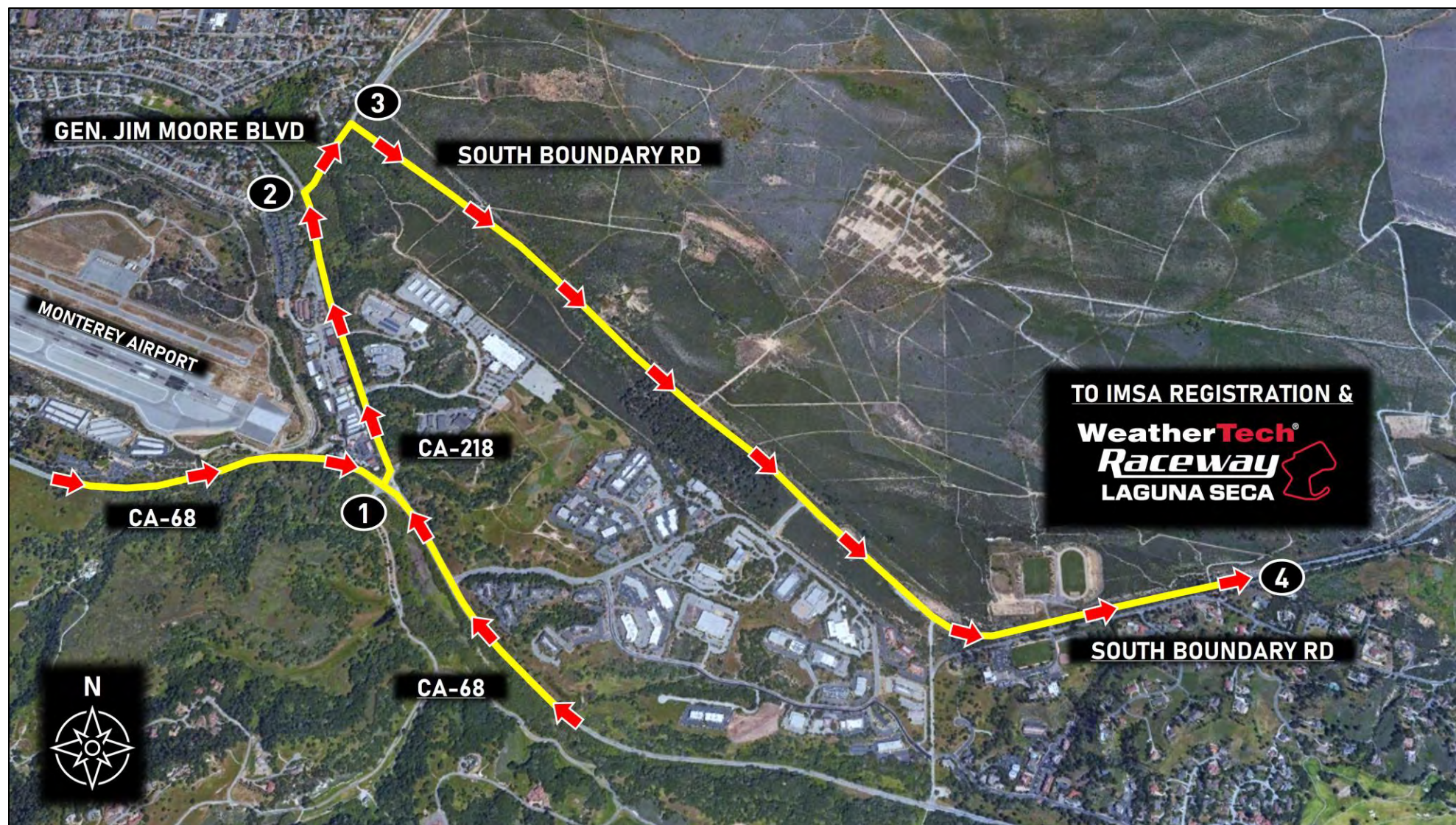


Directions

1. Take CA-68 (Monterey Salinas Hwy) to CA-218 (Canyon Del Rey Blvd)
2. Turn right onto General Jim Moore Blvd
3. Turn right onto South Boundary Road (passing through swing gates)
4. Proceed on South Boundary Road to IMSA Registration & WeatherTech Raceway Laguna Seca

Notes

- IMSA Registration hours can be found in the Official Schedule/SR



EVENT INFORMATION

PARKING

- IMSA Annual Hangtags utilized on the hillside (Blue Lot 2), drivers right prior to entering the paddock.
- Free GA parking available in the Purple Parking Lot with shuttles into track.

Paddock Parking (SUNDAY)

- On Sunday, May 12 there is limited first-come, first-serve parking in the former IMPC paddock area with IMSA Annual Hangtag.

ADA Parking in the paddock will need an additional track issued parking pass – limited availability.

» TO IMSA TEAM PARKING (S BOUNDARY RD ENTRANCE)



Directions

1. Take South Boundary Rd past Admissions Checkpoint
2. Turn right on S Perimeter Rd and proceed towards parking area
3. Park in designated IMSA Team Parking location, Blue Lot 2 (blue shaded area)

Notes

- S Boundary Rd Entrance available at 6:00 AM daily
- IMSA annual parking passes valid at this event (black hangtags)



» TO IMSA TEAM PARKING (CA-68 ENTRANCE)



Directions

1. Take CA-68 (Monterey Salinas Hwy) to Track Entrance
2. Proceed uphill on A Rd to S Perimeter Rd intersection
3. Turn right on S Perimeter Rd, towards parking area
4. Park in designated IMSA Team Parking location, Blue Lot 2 (blue shaded area)

Notes

- CA-68 Entrance open at 6:00 AM from Thur, May 9 - Sun, May 12
- IMSA annual parking passes valid at this event (black hangtags)



EVENT INFORMATION

GOLF CARTS

- **LST** Teams are permitted **one (1)** support vehicles (golf carts) in the paddock area per entry.
- Access stickers available from Carol Mueller in the IWSC series transporter.

PIT VEHICLES

- **LST** Teams are permitted **one (1)** support vehicle (tugger) in the pit lane.
- Access stickers available from Carol Mueller in the IWSC series transporter.

IN ADDITION TO IMSA ISSUED PASSES

- Both rental and privately owned carts must submit a liability insurance certificate for \$1,000,000.00 in coverage in order to operate at the facility.
- Privately owned golf carts must be registered, and an Event sticker required - \$50.00. (NOT needed for Pit Vehicles)
- Available in the [WRLS Team and Crew Packet](#)

IMSA SEVERE WEATHER PLAN

- IMSA continues to use DTN Weather Service with Lightning Detection.
- Notifications will be sent to credentialed attendees for event using IMSA's IRIS-based notification system.
 - Within 30 miles of the track – an advisory message will be sent for informational purposes.
 - Within 20 miles of the track – a cautionary message will be sent to increase awareness and trigger protective actions for personnel and equipment, as needed.
 - Within 8 miles of the track – a full-stop message will be sent to notify personnel to stop all activities and seek shelter due to potentially dangerous conditions.
 - IMSA will continue to send periodic updates through the messaging service anytime on-track activities are under a “full-stop” warning.
 - When severe weather has moved out of the area, an “all-clear” message will be transmitted.

REQUESTING ASSISTANCE ON PROPERTY

MEDICAL

- In case of Emergency: Call WRLS Communications Center at **(831) 242-8236** during following hours:
 - Friday (7:45 am – 6:00 pm)
 - Saturday (7:45 am – 6:00 pm)
 - Sunday (7:45 am – 4:00 pm)
 - Outside the above hours, call **911** first, then call WRLS Security at **(831) 578-3379 or (831) 597-3604**.
- For Non-Emergency: Call WRLS Communications Center at **(831) 242-8236**. For participants, In-field Care Center is located outside the track at Turn 11.

FIRE AND LAW ENFORCEMENT

- For emergency or non-emergency, call WRLS Communications Center **(831) 242-8236** between the hours of 6:00 am – 6:00 pm.
- Call 911 first, then call WRLS Security at **(831) 578-3379 or (831) 597-3604** from 6:00 pm – 6:00 am.
 - Contact #'s for WRLS Security at staffed 24 hours per day.

PIT LANE LOGISTICS

- All pit boxes are 21 feet.
- Red Data Boxes are NOT steps.

PIT LANE SUPPORT:

- Located at IMSA Timing Stand on Start/Finish or IMSATIMING@IMSA.COM

» TEAM / DRIVER BRIEFINGS



Notes

- All briefings are held in the Newman Building, located in the IMSA Paddock
- Two building bays closest to track will be utilized for meetings (see inset photo)
- Proper credentials required for paddock entry



» IMSA PADDOCK TO CARE CENTER



Directions

1. Exit IMSA paddock onto South Perimeter Road. Exit infield and proceed south
2. Take second right onto Barloy Canyon Road and proceed to Care Center (blue shaded area)

Notes

- Care Center Hours:
 - Fri, 5/10, 8:00 a - 6:30 p
 - Sat, 5/11, 7:30 a - 7:30 p
 - Sun, 5/12, 7:30 a - 3:50 p



» TO PIT LANE



Directions

1. Proceed to False Grid
2. Enter Pit Lane
3. Proceed onto racecourse

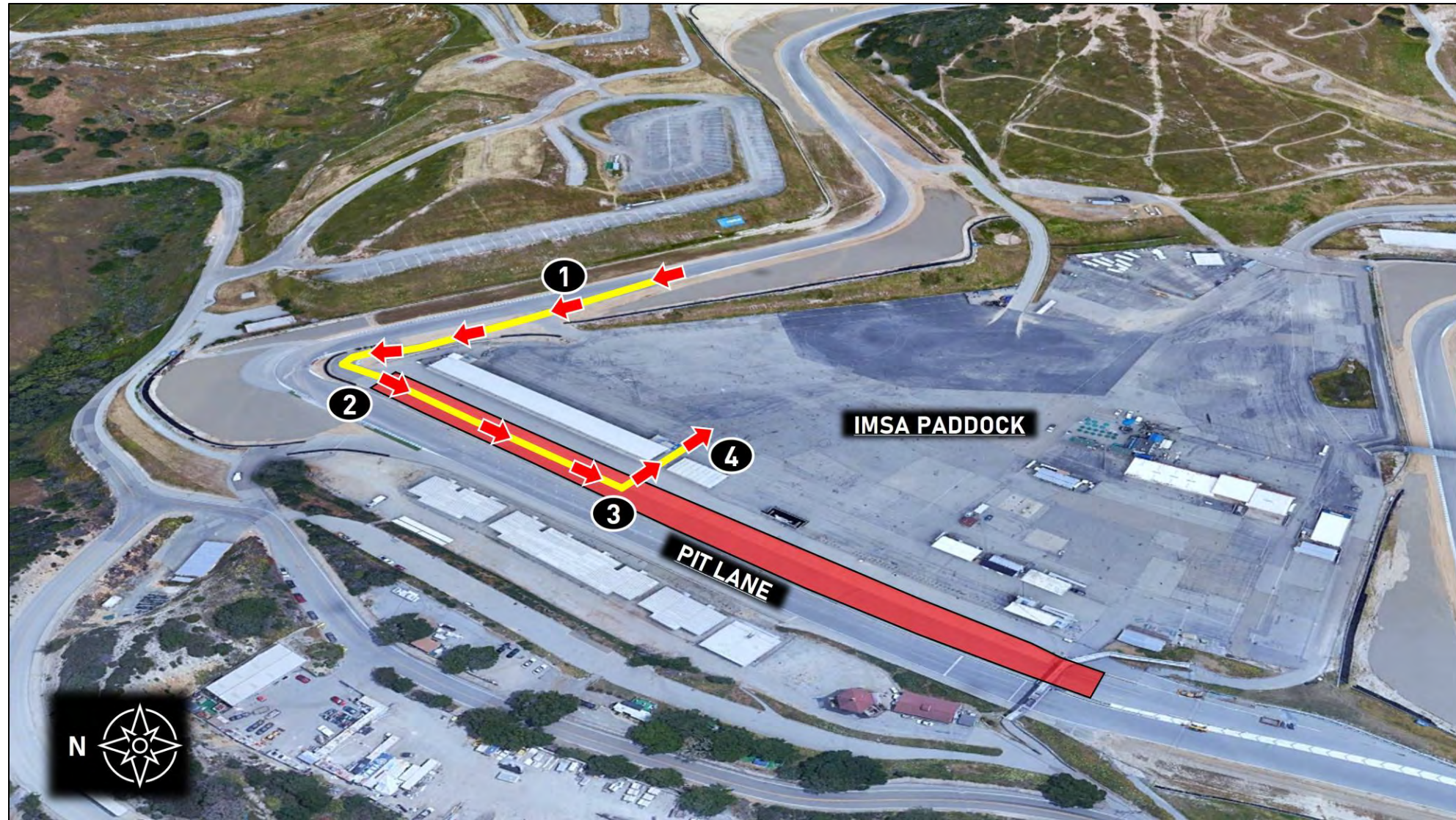


Directions

1. Exit racecourse onto Pit Lane
2. Continue down Pit Lane
3. Exit Pit Lane on drivers' left, past pit row suites
4. Proceed to assigned team space / set-up

Notes

- All cars must be pushed through the garage gate before entering the paddock

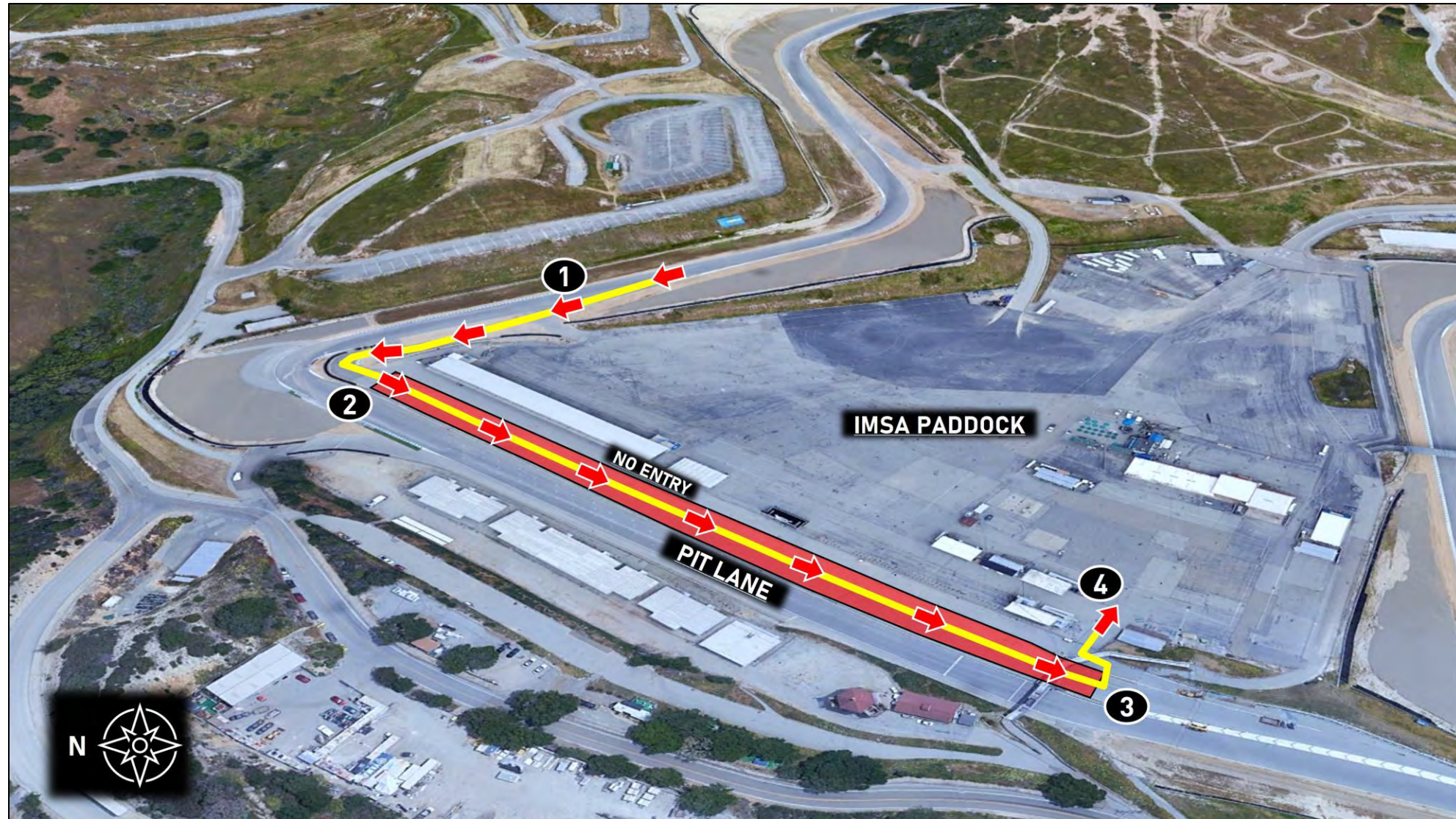


Directions

1. Exit racecourse onto Pit Lane
2. Continue down Pit Lane
3. Exit Pit Lane on drivers' left, past foot bridge. Sharp left turn to enter paddock area
4. Proceed to assigned team space / set-up

Notes

- There will be no paddock access at entrance nearest Pit Lane structure



» DISABLED CAR ROUTE



Directions

1. Coast to Turn 10 back-door paddock entrance and exit track
2. Enter paddock via manned gate and proceed to designated paddock area

Notes

- Route is intended for disabled cars or cars released by Track Services at Turn 8



UPCOMING PROMOTIONAL / FAN OPPORTUNITIES

WATKINS GLEN INTERNATIONAL
WEDNESDAY, JUNE 19
IMSA FAN EVENT AT LOCAL KART TRACK

INDIANAPOLIS 6 HOUR
THURSDAY, SEPTEMBER 19
INDIANAPOLIS STREET FESTIVAL

Interested in participating in one of these events?

Contact [Emily Nash](#) or [Lucas DeBella](#) for more details

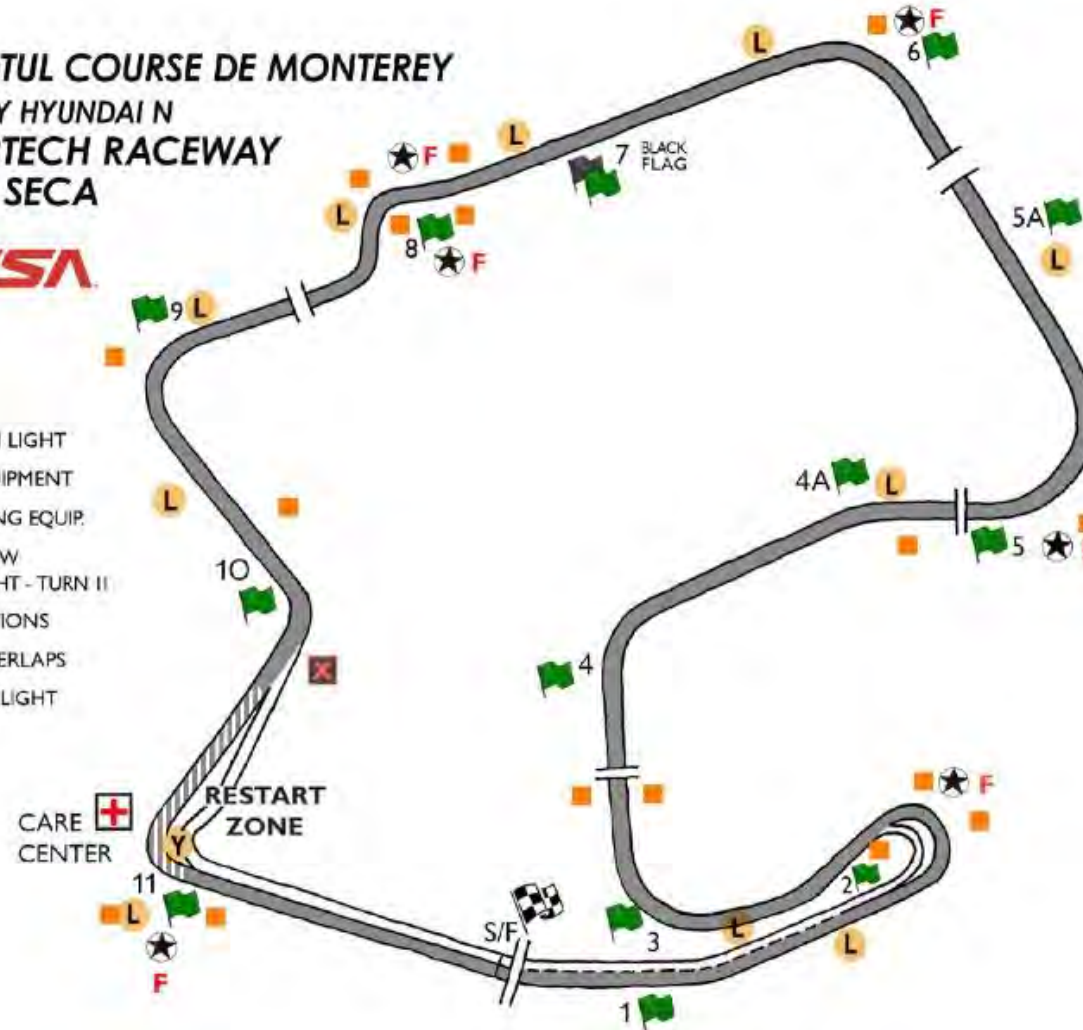


OFFICIAL TRACK MAP

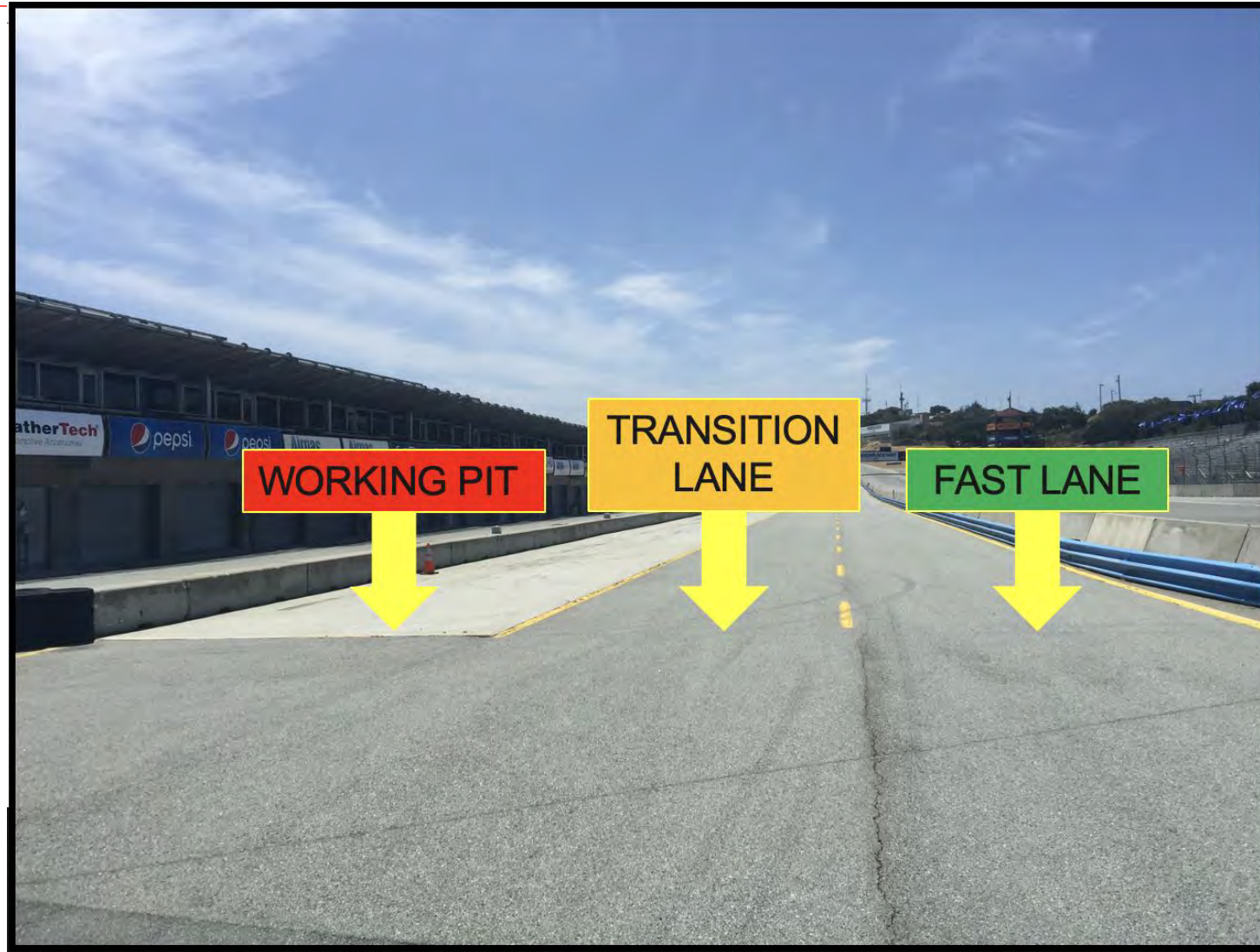
2024 MOTUL COURSE DE MONTEREY
POWERED BY HYUNDAI N
WEATHERTECH RACEWAY
LAGUNA SECA



- IMSA DELPHI LIGHT
- SAFETY EQUIPMENT
- FIRE FIGHTING EQUIP.
- LOCAL YELLOW CAUTION LIGHT - TURN 11
- FLAG LOCATIONS
- ORANGE OVERLAPS
- PITS CLOSED LIGHT



PIT LANE PROTOCOL



PIT EXIT / PENALTY BOX / PIT CLOSED LIGHT



PIT EXIT MERGE

- CARS EXITING THE PIT LANE MUST REMAIN FOUR WHEELS TO THE LEFT OF THE MERGE LINE UNTIL IT ENDS IN TURN 2
- CARS ON TRACK MUST RESPECT THE SPEED DIFFERENCE OF THOSE IN THE PIT EXIT MERGE LANE
- TRACK LIMITS WILL BE ENFORCED



PIT EXIT MERGE

- CARS EXITING THE PIT LANE MUST REMAIN LEFT UNTIL TURN 3
- MERGE SAFELY WITH FASTER CARS ON TRACK
- RESPECT THE SPEED DIFFERENCE OF THOSE ALREADY ON TRACK



ORANGE OVERLAPS



PIT COMMIT / PIT LANE SPEED START

- MUST HAVE PART OF CAR TOUCHING, OR BE TO THE LEFT OF THE DASHED WHITE LINE THAT DIVIDES THE RACETRACK FROM PIT ENTRY PRIOR TO THE PIT CLOSED LIGHT ILLUMINATING IN ORDER TO BE CONSIDERED COMMITTED TO THE PITS
- PIT LANE SPEED LIMIT BEGINS AT RED PYLONS



TRACK LIMITS – TURN 5



TRACK LIMITS – TURN 9



SHORT CUT – TURN 10



RED FLAG / LINING UP...

PRACTICE

- Upon release from false grid, cars are permitted to line up at pit exit
- During red flags, cars are permitted to line up at pit exit

QUALIFYING

- Upon release from false grid, cars are NOT permitted to line up at pit exit and must go to their Pit Box and wait for the command from RC to release.
- During red flags, cars are NOT permitted to line up at pit exit and must go to their Pit Box and wait for the command from RC to release.

QUALIFYING

- CARS THAT LINE UP AT THE PIT EXIT DURING QUALIFYING ARE HELD UNTIL ALL OTHER CARS PROPERLY IN THEIR PIT BOX HAVE HAD AN OPPORTUNITY TO JOIN THE SESSION AND ARE THEN RELEASED.
- CARS THAT LINE UP AT THE PIT EXIT DURING QUALIFYING AND THAT ENTER THE TRACK prior to release ARE PENALIZED AS BELOW.
- CARS PENALIZED ON TRACK FOR LINING UP OR LEAVING THEIR PIT BOX EARLY MUST SERVE THE PENALTY PRIOR TO REGISTERING ANY LAP TIMES FOR THE PURPOSES OF QUALIFYING POSITION.
- Short sessions, watch mirrors frequently on your in and out laps to not impede the qualifying of another competitor.

TRACK SERVICES

IMSA CHASE VEHICLES

- Chase 1
- Chase 2
- Chase 3
- Chase 4

ON TRACK ASSISTANCE

- Communication with Track Services Medic
- Neutral and power shut off
- Follow direction on scene Track Services
- Maintain a safe speed and distance when passing on track incidents with Track Services team members on the scene



Roy Spielmann (414) 702-0905

PIT STOP

MINIMUM TIME PIT IN LOOP TO PIT OUT LOOP

- TWO DRIVERS = 84 SECONDS
- SOLO DRIVER = 87 SECONDS

PIT DISTANCE IS 15,474 INCHES

DRIVER MUST CHANGE DRIVER ID PLUG BEFORE LEAVING PIT EXIT OR IT WILL NOT REGISTER. INCORRECT DRIVER ID MAY RESULT IN A DRIVE THROUGH TO RECTIFY

DRIVING SLOWER THAN 60kph IN THE FAST LANE MAY BE PENALIZED

TRANSITION LANE SHOULD BE USED IF LESS THAN 60kph TO NOT INTERFERE WITH CARS IN THE FAST LANE

Thank you!

**Race Briefing Saturday at
12:45pm**



LAMBORGHINI SUPER TROFEO

WEATHERTECH RACEWAY LAGUNA SECA

RACE BRIEFING



SQUADRA CORSE

PRE-RACE PROCEDURES

REFER TO THE MxM

RACE START

- ONE (1) FORMATION LAP
- PACK UP from T6 to T8, PAIR UP T8 to T10
- STAY WITH SAFETY CAR
- SAFETY CAR ENTERS PITS
- No ACCELERATION POINT - steady speed until Green flag displayed
- MUST MAINTAIN COLUMN POSITIONS AND LANES UNTIL CROSSING THE START LINE

- JUMP/FALSE START REVIEWS
 - GAPS
 - TIMED/EARLY ACCELERATION
 - OUT OF LINE
 - COLUMN PASSING
- OFFICIAL RACE START IS FIRST TIME BY

R1 START SEBRING

R2 START SEBRING

ON TRACK

- **RESTARTS** – Passing is allowed after display of Green Flag
- **LOCAL YELLOWS**
 - No passing
 - Slow to a safe speed
- **BLOCKING / DEFENDING INCREASE RESPONSIBILITY**
 - Proactive vs. Reactive
 - Race how you would like to be raced
- **COEXISTENCE – MULTI CLASS RACING**
 - Awareness
 - Coexist
 - Blue Flags / Car being passed be consistent!

ORANGE OVERLAPS



PIT COMMIT / PIT LANE SPEED START

- MUST HAVE PART OF CAR TOUCHING, OR BE TO THE LEFT OF THE DASHED WHITE LINE THAT DIVIDES THE RACETRACK FROM PIT ENTRY PRIOR TO THE PIT CLOSED LIGHT ILLUMINATING IN ORDER TO BE CONSIDERED COMMITTED TO THE PITS
- PIT LANE SPEED LIMIT BEGINS AT RED PYLONS



TYPO IN REGULATIONS

119 NEUTRALIZATION OF THE RACE: “FULL COURSE YELLOW”

119.1 (SSR) The pits remain **open** at all times during a Full Course Yellow (FCY) unless directed otherwise by Race Control. The racetrack is deemed to be under FCY conditions at the time of the announcement by Race Control, regardless of the function of the IMSA FCY Light System, any ontrack light system, or display of flag(s).

FULL COURSE YELLOW

Race control radio, in-car lights, trackside lights, double yellow flags displayed

Safety VEHICLES may begin to move as soon as FCY is ANNOUNCED

Leader to safety car speed, all cars pack up – respect the area of incident/track services personnel

- Safety Car dispatches from pit exit
- RC instructions regarding track condition over radio

Lights out by turn 9

- Maintain SC speed, let SC get away, *no more tire scrubbing*

Restart Acceleration zone – Turn 11

- Passing can occur at the display of green flag
- Expect restarts to be faster than original start

PIT STOP

MINIMUM TIME PIT IN LOOP TO PIT OUT LOOP

- TWO DRIVERS = 84 SECONDS
- SOLO DRIVER = 87 SECONDS

PIT DISTANCE IS 15,474 INCHES

- DRIVER MUST CHANGE DRIVER ID PLUG BEFORE LEAVING PIT EXIT OR IT WILL NOT REGISTER. INCORRECT DRIVER ID MAY RESULT IN A DRIVE THROUGH TO RECTIFY
- DRIVING SLOWER THAN 60kph IN THE FAST LANE MAY BE PENALIZED
- TRANSITION LANE SHOULD BE USED IF LESS THAN 60kph TO NOT INTERFERE WITH CARS IN THE FAST LANE

MANDATORY PIT STOP

1. No respect of the time between the two pit lane timing loops under the published time (Art. 41). If the driver stays in the pitlane for a time that is less than (or equal to) 1 "seconds respect to the minimum time imposed, the driver will receive a time penalty equal to three times time period not respected. If the driver stays in the pitlane for a time that is more than 1 "seconds less than the minimum time imposed, the driver will receive a penalty equal to Drive Through.
2. All stopping or driving at an abnormally slow speed, lower than 55 kph after the pit stop carried out at the designated Pit/Area: Drive-Through;
3. All speeding over the limit of 60 kph in the pit lane: Drive-Through;
4. Start of the obligatory pit stop outside the obligatory times (Art. 41): Drive- Through penalty.

However, should any of the penalties under 1) to 4) above be imposed and notified during the last 5 minutes or the 3 last laps, or after the end of the race, a 30-second time penalty shall be added to the elapsed time of the car concerned in cases 2) and 3) and a time penalty of 30 seconds plus the original Stop & Go Penalty in cases 1) and 4).

- Pit Entry is closed under FCY during the Pit Stop Window
- No Mandatory Pit Stop = Stop and Go plus the original minimum pit time
- Crew on the hot side of Pit Lane, Motor off during Pit Stop!

ON TRACK

- **LOCAL YELLOWS**
 - No passing
 - Slow to a safe speed
- **BLOCKING / DEFENDING INCREASES RESPONSIBILITY**
 - Proactive vs. Reactive
 - Race how you would like to be raced
- **COEXISTENCE – MULTI CLASS RACING**
 - Awareness
 - Coexist
 - Blue Flags / Car being passed be consistent!

ADDITIONAL PENALTIES

- **Race Control may impose larger than D.T. penalties for Incident Responsibility**
 - Stop and Go
 - Stop and Hold
- **10 Second Penalty**
 - The Race Director may apply a 10 second time penalty
 - Potential applications:
 - Jump start
 - PUY after the incident but before green flag
 - Incident responsibility that resulted in no change of position
 - 10 second penalties are applied as the penalized car crosses Start/Finish at the Checker
 - The 10 second penalty is intended to increase the range of penalty options in sprint races
 - D.T. prior to checker will negate the 10 second penalty if served within 4 laps of announcement

POST RACE

Refer to MxM

POST-RACE - AFTER ALL RACING CARS HAVE TAKEN CHECKERED FLAG	
	Cool down lap
	All cars enter pit lane, drivers right.
	Overall winning car directed by IMSA Officials to turn left at garage gate and park in front of podium.
	IMSA Officials direct remaining podium cars to continue down pit lane and exit at pit out gate and head directly to Tech as directed by IMSA Officials.
	All other cars continue down pit lane and exit at pit out gate as directed by IMSA Officials.
	Drivers proceed directly to Victory Podium for award presentations. Crew must be on hand to move cars to Paddock or Impound as directed by IMSA Officials.

WET WEATHER PROTOCOLS

- RACE STARTS DRY AND GOES WET
 - WE WILL GO FCY AND BRING THE ENTIRE FIELD IN TO CHANGE TO WETS
- IF SESSION / RACE IS DECLARED WET ALL CARS START ON WET TIRES
 - TEAM CHOICE IF OR WHEN TO GO TO DRY TIRES
 - CAN NOT CHANGE TIRES DURING THE MANDATORY PIT STOP WINDOW

LAMBORGHINI SUPER TROFEO

BEST OF LUCK TO ALL!



SQUADRA CORSE