



WEATHERTECH
RACEWAY
LAGUNA SECA
SUN | MAY 12
3:00PM ET

START TO FINISH ON

peacock



SERIES CONTACTS

Beaux Barfield	Race Director	(832) 260-1032
Paul Walter	Sporting Regulations	(614) 598-6783
Brian Wilson	Series Manager	(386) 281-9494
Cory Posocco	Logistics & Event Ops	(386) 566-8313
Eric Haverson	Technical	(386) 562-7214
Johnny Knotts	Pit Lane Supervisor	(813) 763-4669
Carol Mueller	Administration	(386) 262-8932
David Pees	Timing & Scoring	(386) 308-8866
Ryan McLean	Medical Liaison	(386) 285-6913
Roy Spielmann	Track Services	(414) 702-0905
Robert Bosworth	Safety & Security	(704) 728-8087

[Full IMSA Operational Contact List](#)

IMSA RESOURCES

IMSA COMPETITOR LANDING PAGE:

<https://www.imsa.com/competitors/>

- Team Portal
- Event Information
- Rules & Regulations
- Marketing & Branding Page

IMSA NOTICE BOARD:

<http://results.imsa.com/>

- Driver & TM Briefings
- Entry Lists
- Minute by Minute
- Timing Results
- Penalties

WELCOME TO THE 2023 IMSA COMPETITION LANDING PAGE

FOR ALL IMSA COMPETITOR INFORMATION PLEASE CLICK THE HAMBURGER MENU AT THE TOP LEFT OF THIS PAGE.

The one-stop shop for everything you'll need to get your team on track.

[2023 Driver Portal](#)

[2023 Team Portal](#)

[2023 Sebring Test Event Information](#)

[Media Center](#)

[IMSA Marketing and Branding Resources](#)

[Race Results](#)

[Ferrari Challenge Race Results](#)

[Special Michelin Fleet Pricing for Commercial/Light Truck Tires and Service - For ALL IMSA Members - 8 Tire Minimum Purchase](#)

[Special Michelin Discount Program for Passenger Tire - For ALL IMSA Members](#)

[IMSA Proud Suppliers](#)

LATEST EVENT INFORMATION



Mobil 1 Twelve Hours Of Sebring

Mar 15 to Mar 18

Sebring, FL

Resources:

[Provisional Schedule & SR 1/18/23](#)

IMSA NOTICEBOARD

SEASON [2023] EVENT [Rolex 24 - Daytona International Speedway]

ROLEX 24 - DAYTONA INTERNATIONAL SPEEDWAY, SEASON 2023

- OFFICIAL SCHEDULE - V2
- PIT BOX ASSIGNMENTS
- TIMING 3 SECTOR MAP
- TRACK MAP - V2
- BRIEFING PHOTOS
 - IMPC DRIVER BRIEFING
 - INSC DRIVER BRIEFING - V2
 - MX-5 DRIVER BRIEFING
- CHANNEL LIST
 - ROLEX 24 CHANNEL LIST
- ENTRY LIST
 - IMPC PRE-RACE ENTRY LIST - V2
 - INSC PRE-EVENT ENTRY LIST
 - MX-5 PRE-RACE ENTRY LIST

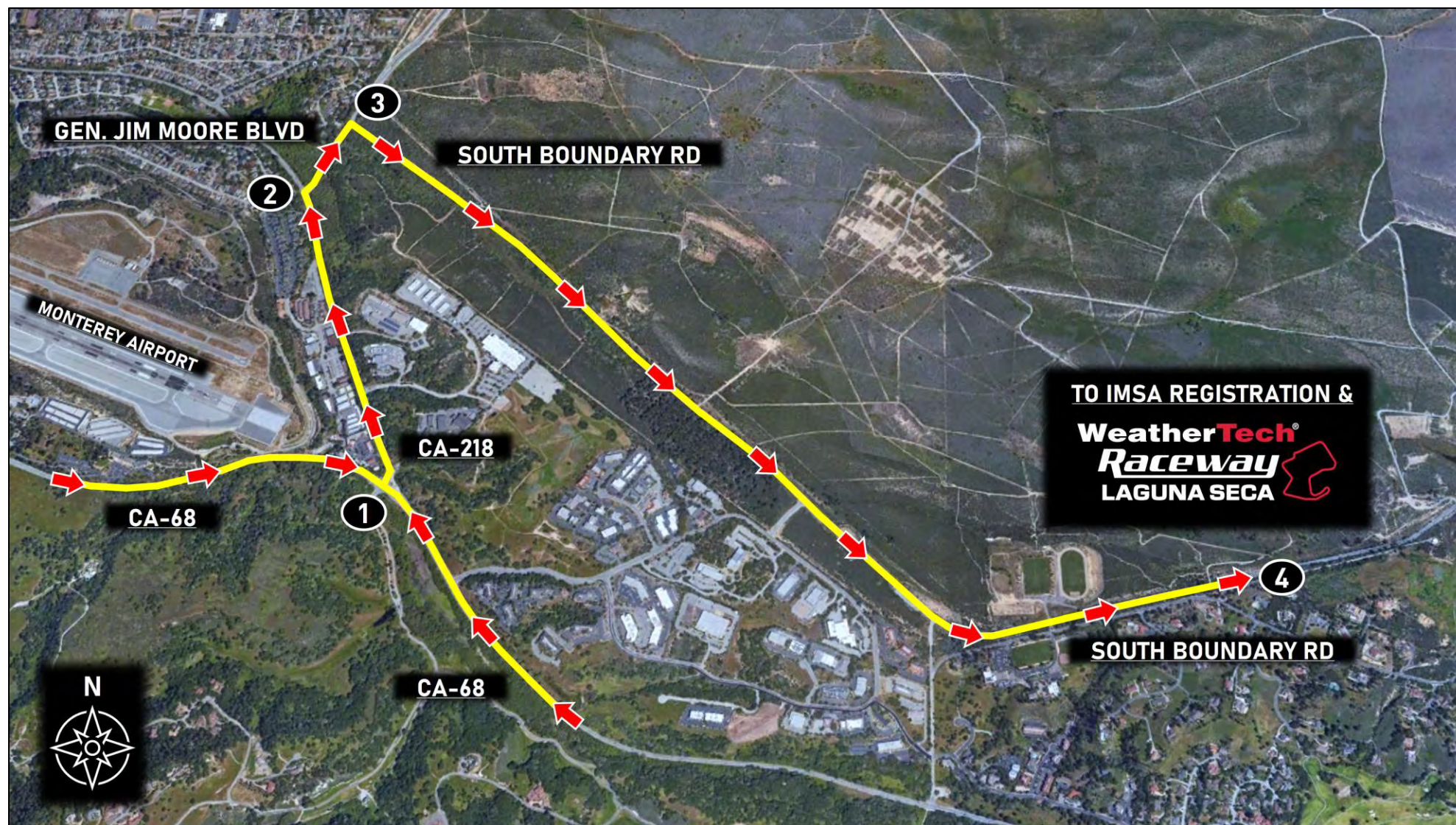
TIMING RESULTS | LIVE TIMING

Directions

1. Take CA-68 (Monterey Salinas Hwy) to CA-218 (Canyon Del Rey Blvd)
2. Turn right onto General Jim Moore Blvd
3. Turn right onto South Boundary Road (passing through swing gates)
4. Proceed on South Boundary Road to IMSA Registration & WeatherTech Raceway Laguna Seca

Notes

- IMSA Registration hours can be found in the Official Schedule/SR



Directions

1. Take CA-68 (Monterey Salinas Hwy) to Track Entrance
2. Proceed uphill on A Rd to S Perimeter Rd intersection
3. Turn right on S Perimeter Rd, towards parking area
4. Park in designated IMSA Team Parking location, Blue Lot 2 (blue shaded area)

Notes

- CA-68 Entrance open at 6:00 AM from Thur, May 9 - Sun, May 12
- IMSA annual parking passes valid at this event (black hangtags)



Directions

1. Proceed to False Grid
2. Enter Pit Lane
3. Proceed onto racecourse

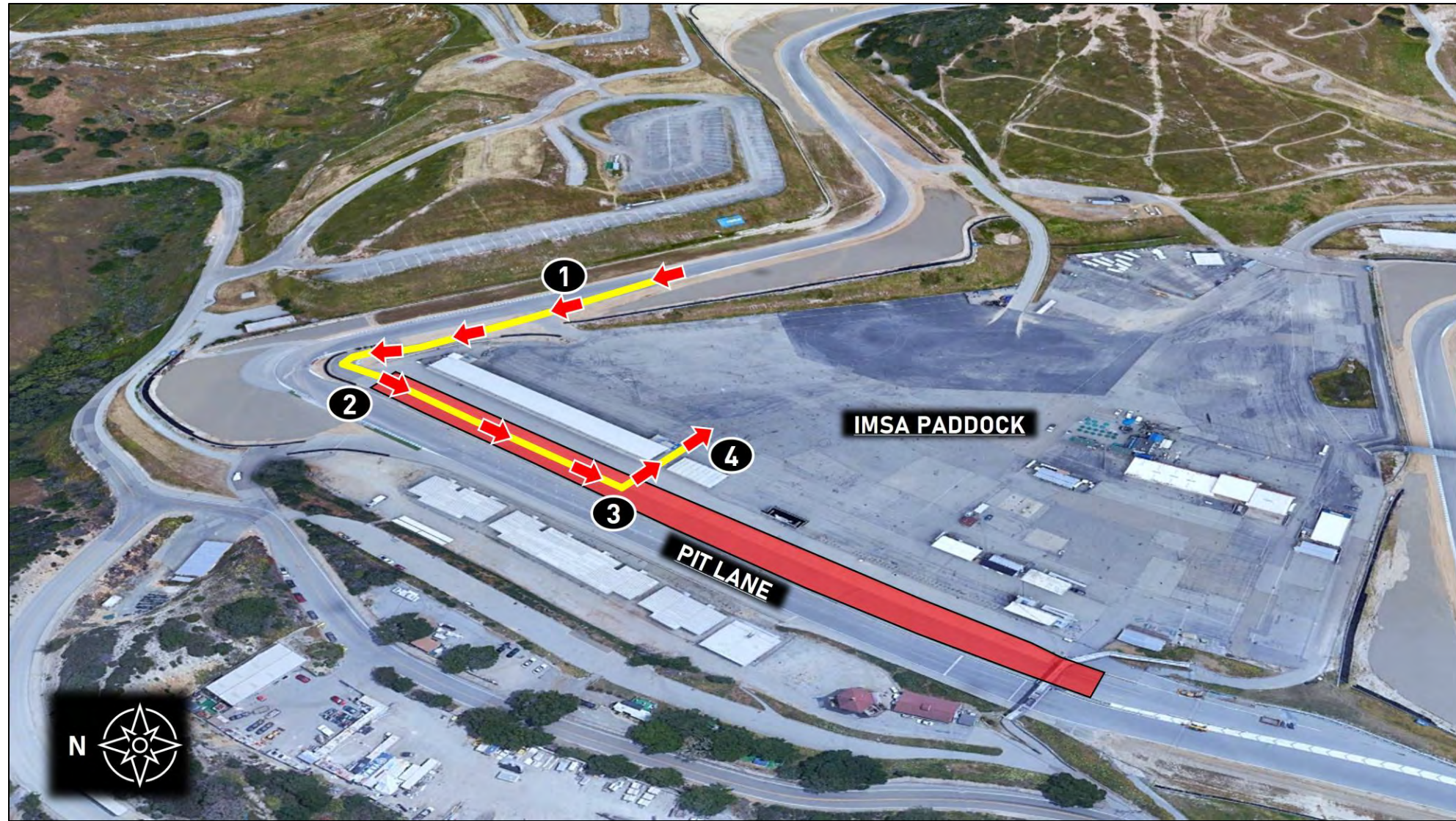


Directions

1. Exit racecourse onto Pit Lane
2. Continue down Pit Lane
3. Exit Pit Lane on drivers' left, past pit row suites
4. Proceed to assigned team space / set-up

Notes

- All cars must be pushed through the garage gate before entering the paddock

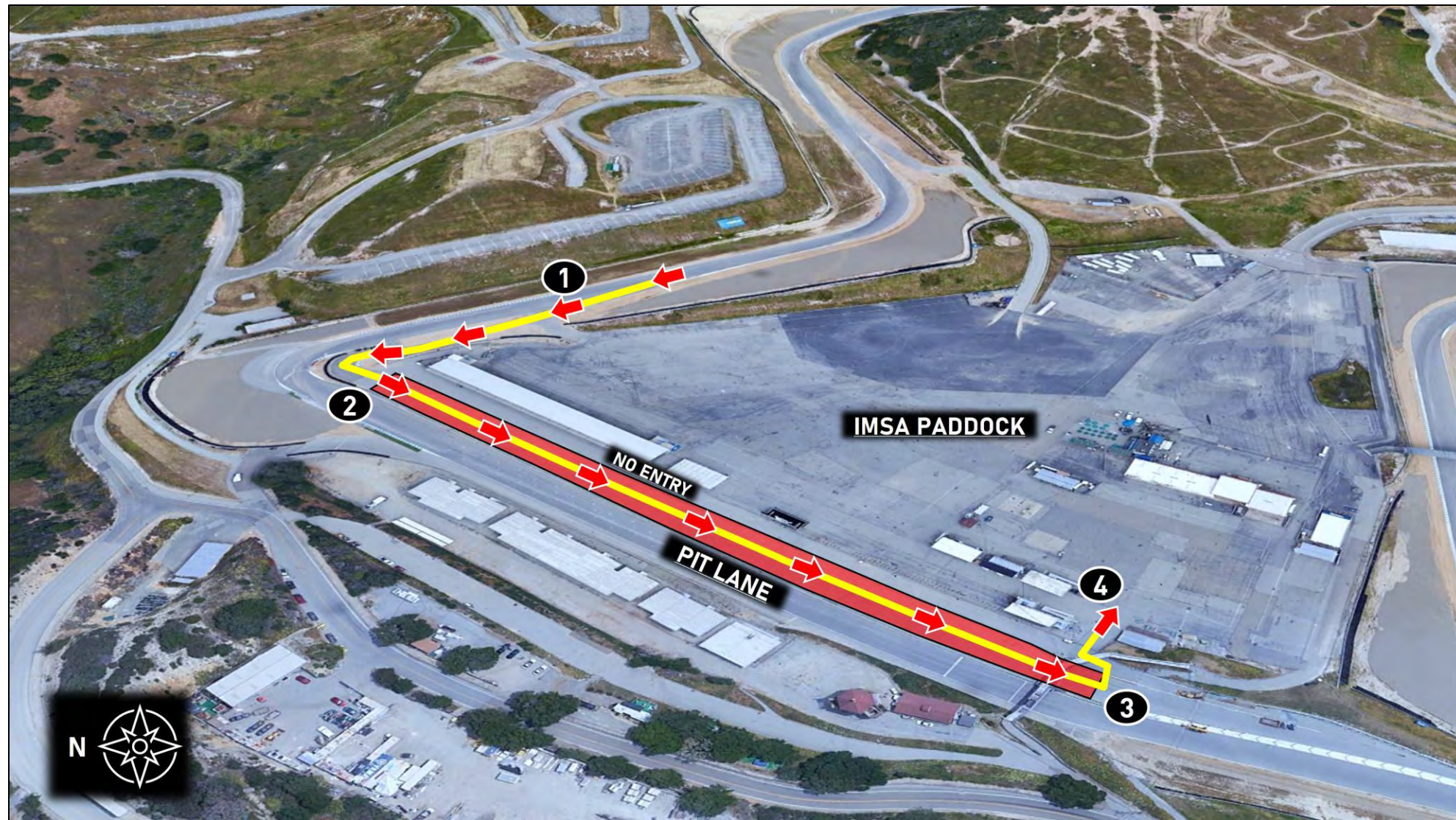


Directions

1. Exit racecourse onto Pit Lane
2. Continue down Pit Lane
3. Exit Pit Lane on drivers' left, past foot bridge. Sharp left turn to enter paddock area
4. Proceed to assigned team space / set-up

Notes

- There will be no paddock access at entrance nearest Pit Lane structure



IMSA TRACK SERVICES

IMSA CHASE VEHICLES

- Chase 1
- Chase 2
- Chase 3
- Chase 4

ON-TRACK ASSISTANCE

- Communication with Track Services Medic
- Neutral and power shut off
- Follow direction of on-scene Track Services personnel
- Maintain a safe speed and distance when passing on-track incidents with Track Services team members on the scene

Contact: Roy Spielmann 414.702.0905



IMSA TRACK SERVICES

- Cars are not flat towed down the corkscrew
- Cars are released at the top of corkscrew and coast to T10 DL back door gate to Paddock

» DISABLED CAR ROUTE



Directions

1. Coast to Turn 10 back-door paddock entrance and exit track
2. Enter paddock via manned gate and proceed to designated paddock area

Notes

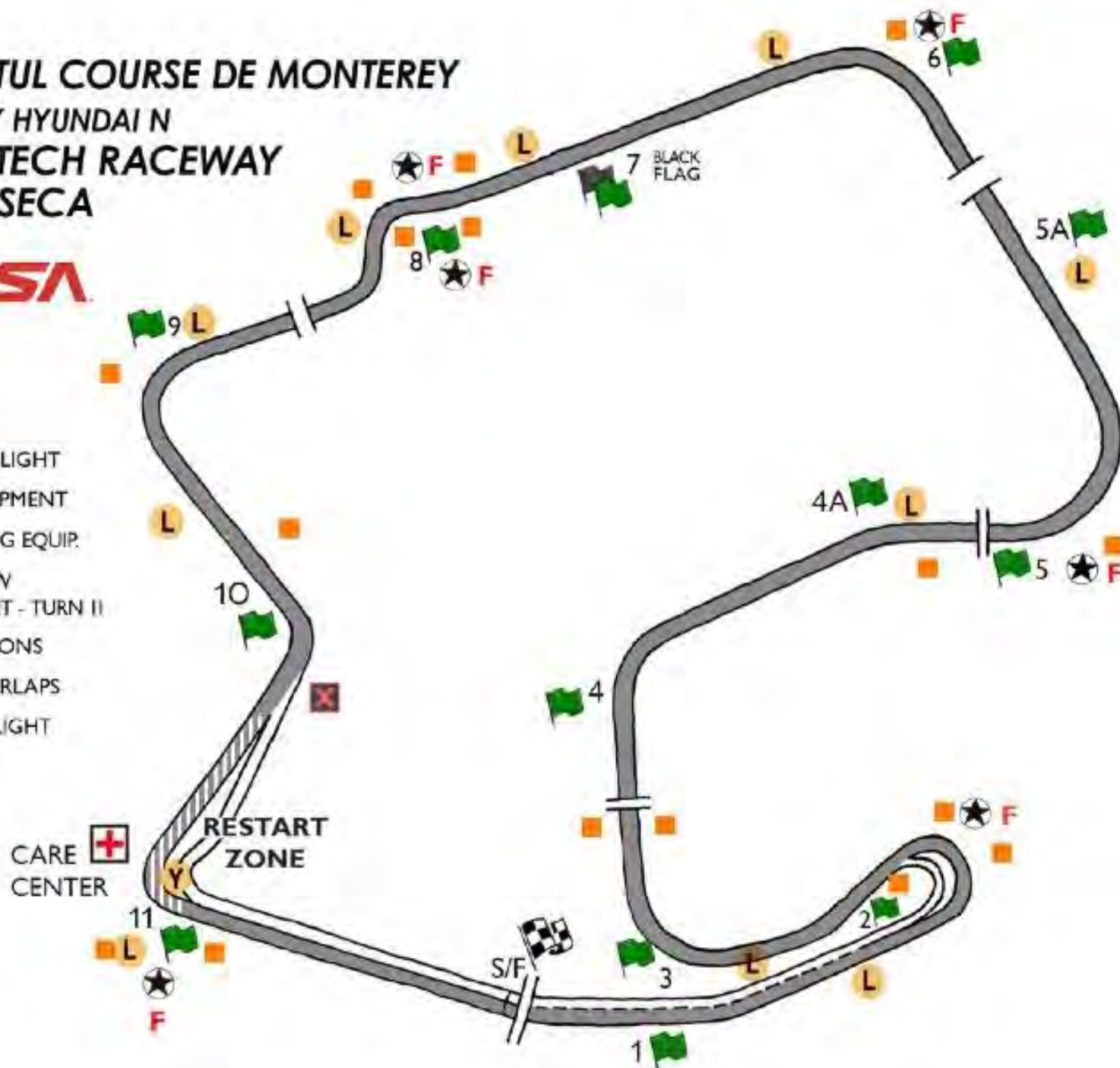
- Route is intended for disabled cars or cars released by Track Services at Turn 8



2024 MOTUL COURSE DE MONTEREY
POWERED BY HYUNDAI N
WEATHERTECH RACEWAY
LAGUNA SECA

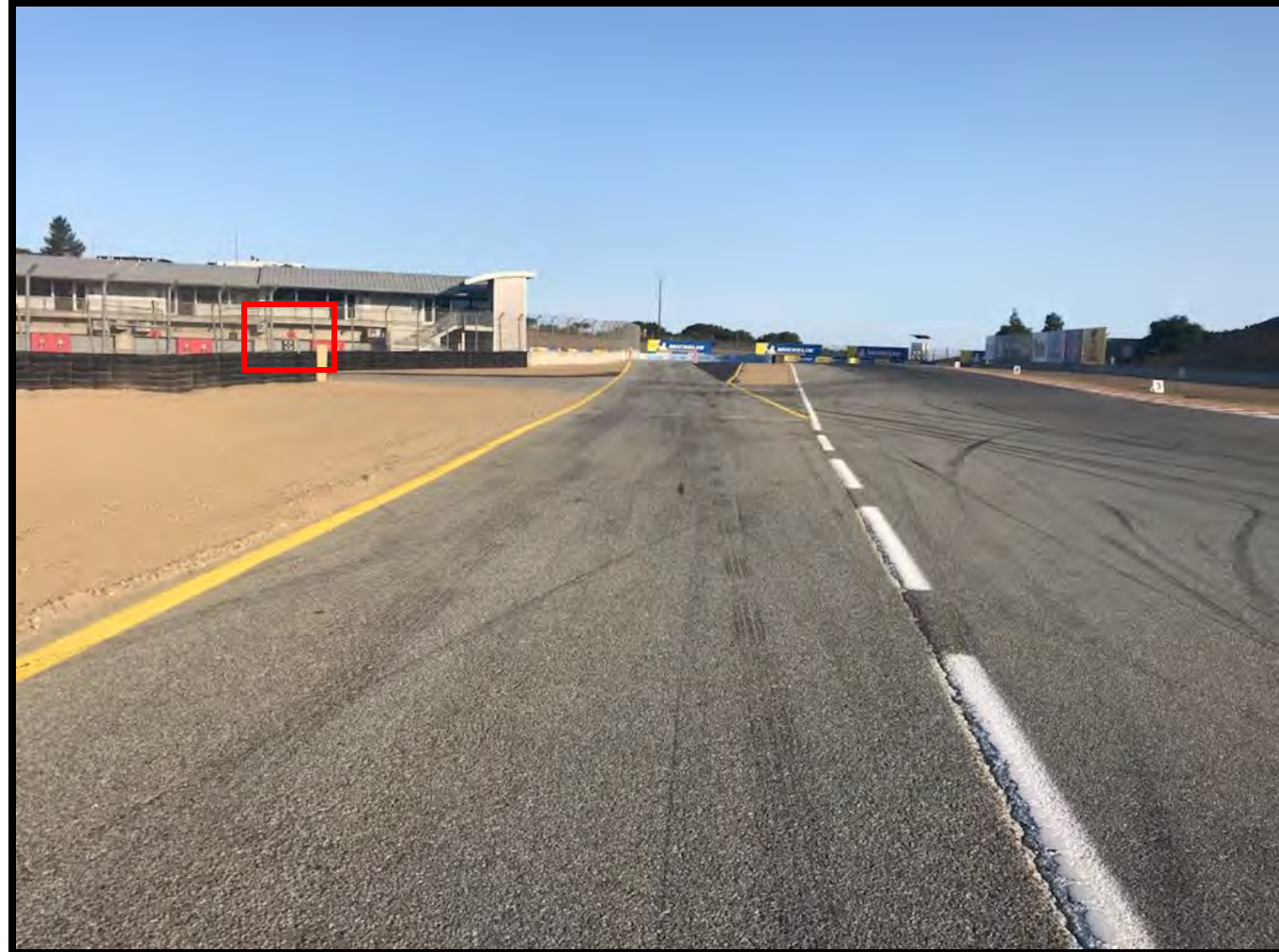


- L** IMSA DELPHI LIGHT
- ★** SAFETY EQUIPMENT
- F** FIRE FIGHTING EQUIP.
- Y** LOCAL YELLOW CAUTION LIGHT - TURN II
- 🚩** FLAG LOCATIONS
- ORANGE OVERLAPS
- ⊠** PITS CLOSED LIGHT



PIT COMMIT / PIT LANE SPEED START

- MUST HAVE PART OF CAR TOUCHING, OR BE TO THE LEFT OF THE DASHED WHITE LINE THAT DIVIDES THE RACETRACK FROM PIT ENTRY PRIOR TO THE PIT CLOSED LIGHT ILLUMINATING IN ORDER TO BE CONSIDERED COMMITTED TO THE PITS.
- PIT LANE SPEED LIMIT BEGINS AT RED PYLONS

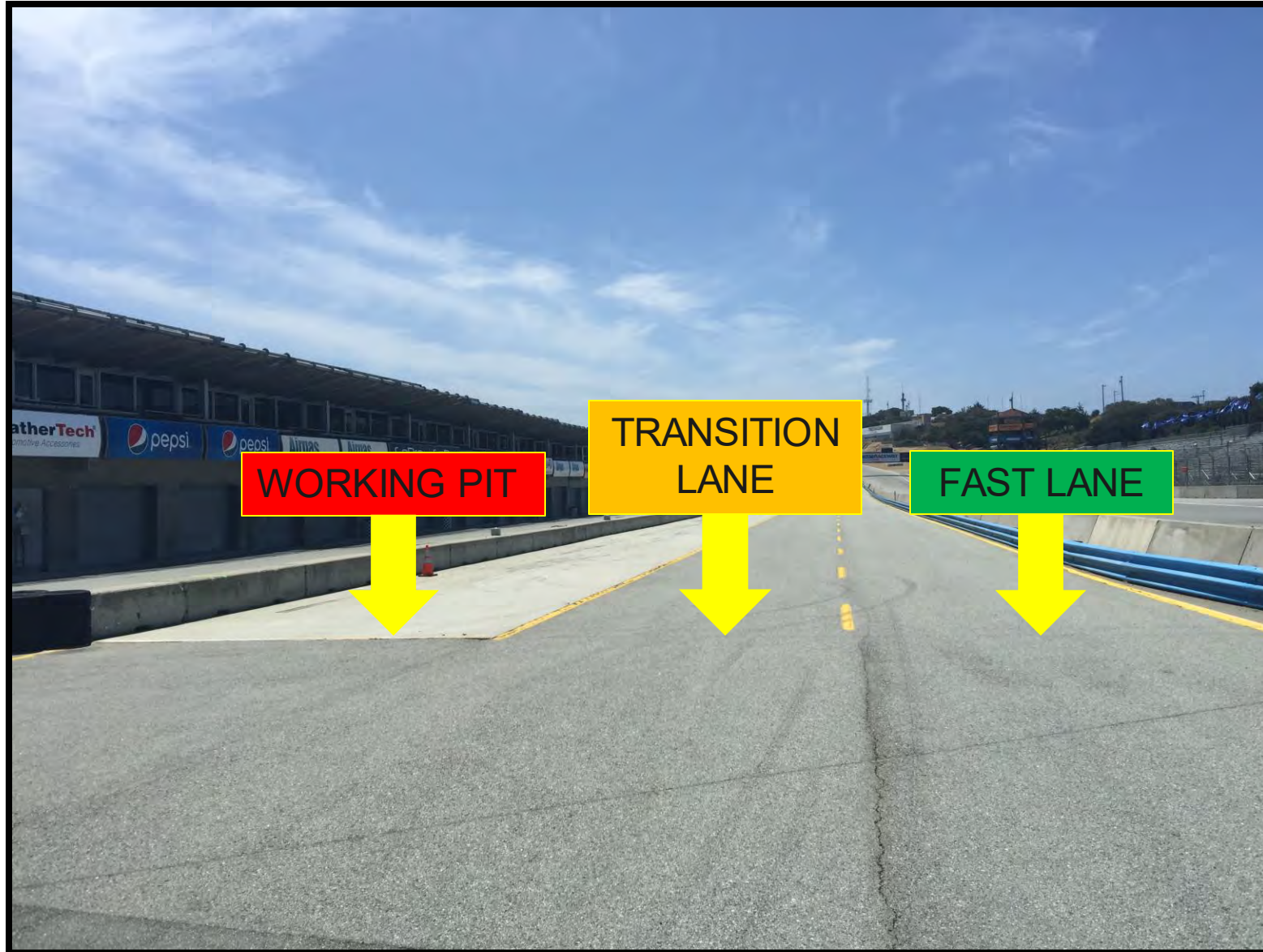


PIT CLOSED REPEATER LIGHT

- TWO, POSITIONED ON PIT WALL FOR TEAM MANAGERS



PIT LANE PROTOCOL



PIT EXIT CLOSED

- PIT EXIT CLOSED LIGHT



PIT EXIT / PENALTY BOX

- PIT EXIT / PENALTY BOX



PIT EXIT MERGE

- CARS EXITING THE PIT LANE MUST REMAIN FOUR WHEELS TO THE LEFT OF THE MERGE LINE UNTIL IT ENDS IN TURN 2
- CARS ON TRACK MUST RESPECT THE SPEED DIFFERENCE OF THOSE IN THE PIT EXIT MERGE LANE
- TRACK LIMITS WILL BE ENFORCED



PIT EXIT MERGE

- CARS EXITING THE PIT LANE MUST REMAIN LEFT UNTIL TURN 3
- MERGE SAFELY WITH FASTER CARS ON TRACK
- RESPECT THE SPEED DIFFERENCE OF THOSE ALREADY ON TRACK



ORANGE OVERLAPS



ORANGE OVERLAPS



TRACK LIMITS (TURN 5)



TRACK LIMITS (TURN 9)



SHORTCUT (TURN 10)



RESTART ACCELERATION ZONE

RESTART ACCELERATION ZONE IS
TURN 11



RACE

- **TWO (2) FORMATION LAPS**
- **PACK UP FIRST TIME BY/PAIR UP OUT OF T6**
- **STAY WITH SAFETY CARS**
- **SAFETY CARS ENTER PITS**
- **THIS IS A SPLIT START**
 - THE GTP AND GTD POLESITTERS WILL BE GIVEN INSTRUCTIONS PRIOR TO THE RACE
- **ACCELERATION POINT (POLESITTERS)**
- **JUMP/FALSE START REVIEWS**
 - Gaps
 - Timed/Early Acceleration
 - Out of Line
 - Column Passing
 - Changing Lanes
- **OFFICIAL RACE START IS SECOND TIME BY**

STANDARD FULL COURSE YELLOW

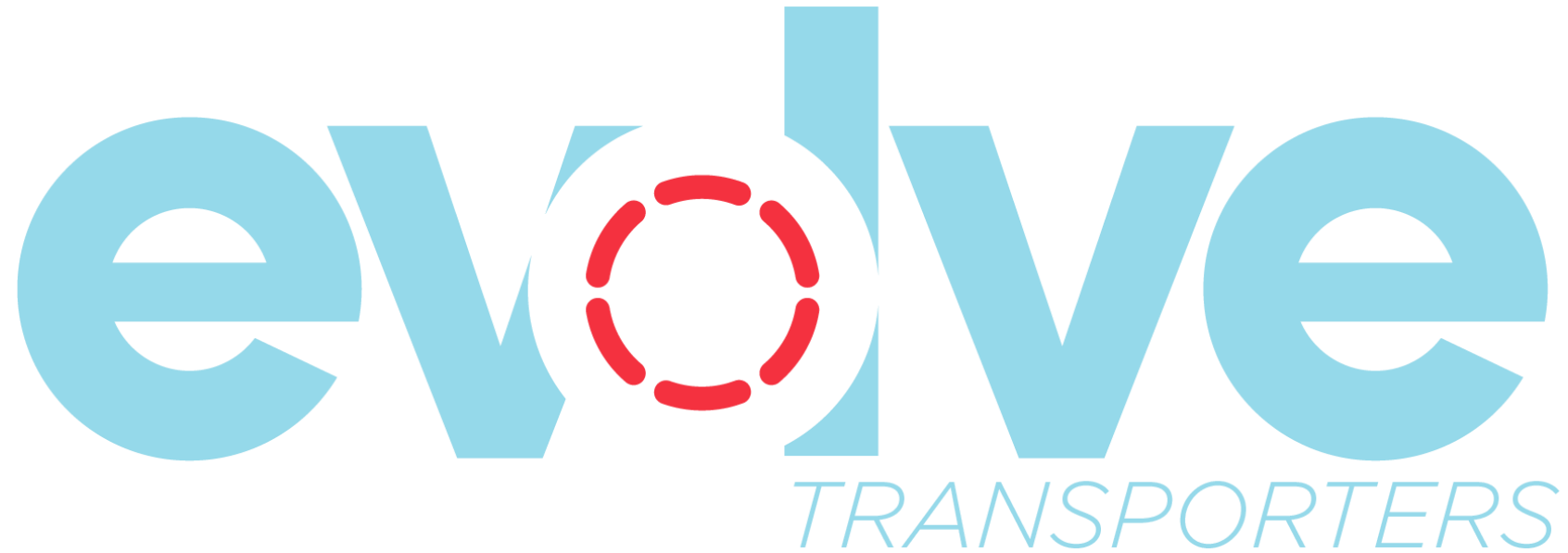
- **PITS CLOSED**
- **FULL COURSE YELLOW**
- **LEADER – SAFETY CAR SPEED**
- **SAFETY CAR DISPATCHED FROM PIT EXIT TO OVERALL LEADER**
- **PASS-AROUND (NO TIRE SCRUBBING)**
- **PITS OPEN (PROTOTYPE)**
- **PITS OPEN (GT)**
- **EMERGENCY SERVICE CARS MUST DT (NO GUARANTEE OF YELLOW)**
 - Emergency Service Fuel Cars must fuel at first opportunity
 - Failure to perform Emergency Service Drive-Through: Stop plus 10 seconds
 - More than Emergency Service taken: Stop plus 60 seconds
- **FINAL WAVE-BY (NO TIRE SCRUBBING)**
- **DPI CLASS SPLIT (NO TIRE SCRUBBING)**
- **PROTOTYPE CLASS SPLIT (NO TIRE SCRUBBING)**
- **RESTART**
- **STANDARD FCY NOT IN EFFECT DURING FINAL 30 MINUTES OF A RACE**

SHORT FULL COURSE YELLOW

- First FCY within 15 minutes of start OR restart from a Standard FCY OR DURING final 30 minutes of a Race
 - **PITS CLOSED**
 - **FULL COURSE YELLOW**
 - **LEADER – SAFETY CAR SPEED**
 - **SAFETY CAR DISPATCHED FROM TURN 3 TO OVERALL LEADER**
 - **PASS-AROUND (NO TIRE SCRUBBING)**
 - **PITS REMAIN CLOSED**
 - **NO FINAL WAVE-BY**
 - **DPI CLASS SPLIT (NO TIRE SCRUBBING)**
 - **PROTOTYPE CLASS SPLIT (NO TIRE SCRUBBING)**
 - **PITS OPEN AFTER ALL CARS PASS PIT-IN COMING TO THE RESTART**
 - **RESTART**
 - **EMERGENCY SERVICE CARS MUST DT**
- EMERGENCY SERVICE FUEL CARS MUST FUEL AT FIRST OPPORTUNITY
- FAILURE TO PERFORM EMERGENCY SERVICE DRIVE THROUGH: STOP PLUS 10 SECONDS
- MORE THAN EMERGENCY SERVICE TAKEN: STOP PLUS 60 SECONDS

ON TRACK

- **RESTARTS**
- **LOCAL YELLOWS**
- **BLOCKING / DEFENDING INCREASE RESPONSIBILITY**
 - Proactive vs. Reactive
- **CONTACT**
 - Responsibility
 - Class racing
 - Multi-class incidents
- **MULTI-CLASS COEXISTENCE**
 - Awareness
 - Coexist



Preventative Maintenance | Repairs | Evaluations | Upgrades

To schedule at-track support, please email:

tracksupport@evolvetransporters.com



STAY FROSTY® PERFORMANCE COOLANTS

Stay Frosty® Race Ready is a proprietary VP Racing Fuels coolant formulated for high-compression, high-heat racing engines. It contains a specialized blend of heat transfer agents that drastically improve coolant's ability to transfer heat away from high temperature cylinder heads. Temperatures of engines are reduced by up to 30°F compared to conventional glycol-based coolant.

100% Water-Based Glycol-Free Formula

Reduces Engine Temps Up to 30°F

Blended with Chemically Stable Reverse Osmosis Water

Ready-To-Use – Just Pour In (Also Available in Clear)



OFFICIAL PERFORMANCE COOLANT

***Lower Temps.
More Power.***



RACING OPTICS®

Looking for windshield tear-offs?

Racing Optics, a Proud Partner of IMSA, is the industry leader in multilayer, laminated tear-offs, and is proud to offer their product and installation services to IMSA teams and competitors.

For those looking to purchase product away from the track, Racing Optics is excited to offer IMSA teams and competitors a special **20% off promo code** for Racing Optics windshield tear-offs on Pro-Tint's [online shop](#).

Use code “**IMSA20**” at checkout to receive your discount.

To schedule an install or for more information, please contact:

Chris Colton

Applications Engineer / Sponsorships & Corporate Relations

C.Colton@racingoptics.com

980-439-6485





WEATHERTECH
RACEWAY
LAGUNA SECA
SUN | MAY 12
3:00PM ET

START TO FINISH ON

peacock

